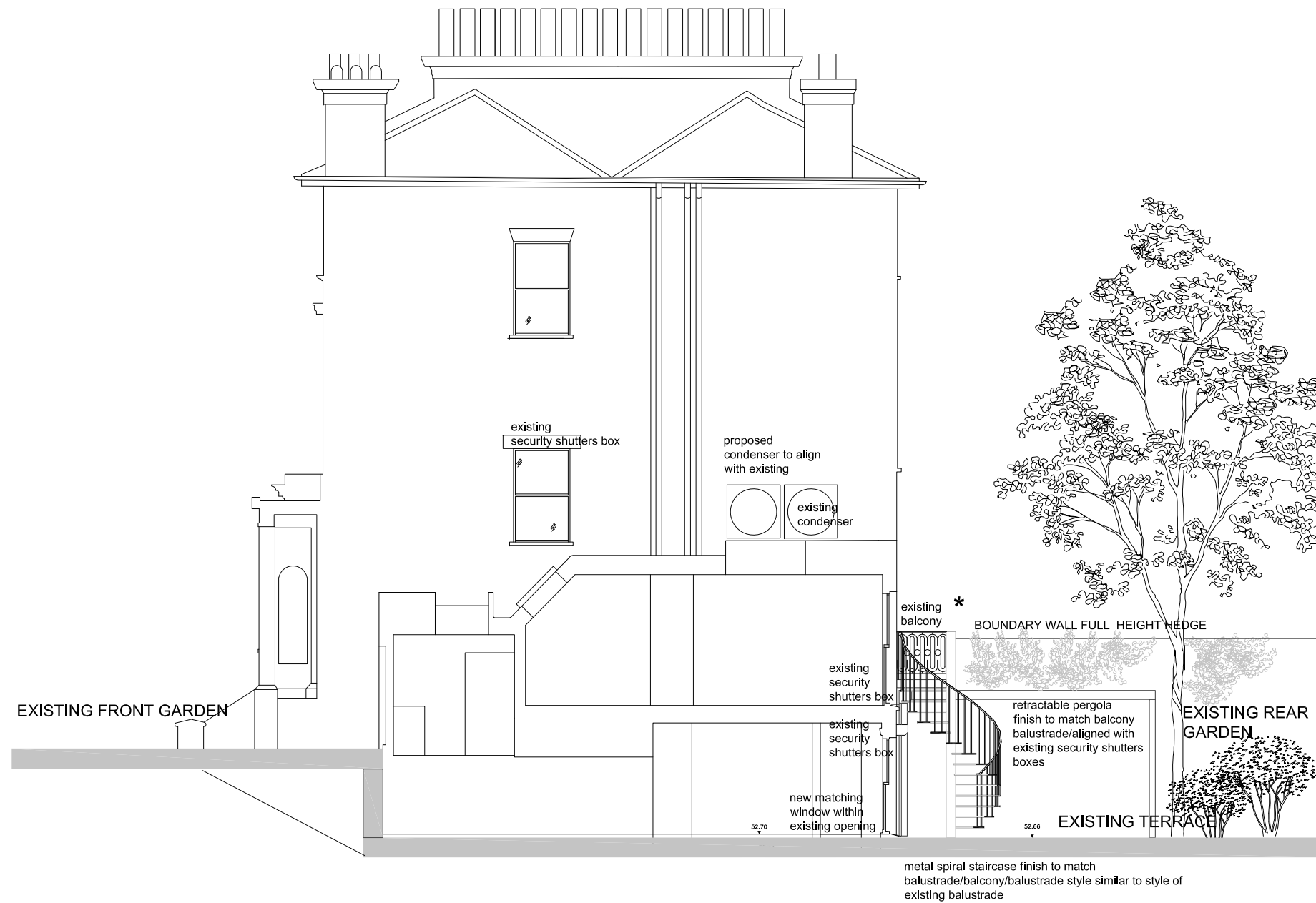


General Notes
 This drawing is copyright of KSR architects. This drawing must be read in conjunction with the Designer's Risk Assessment, specification and all other relevant documentation and drawings.
 KSR architects accept no liability for any expense, loss or damage of whatsoever nature and however arising from any variation made to this drawing or in the execution of the work to which it relates which has not been referred to them and their approval obtained.
 Areas are based on un-checked survey and are approximate only. Do not scale from this drawing or the digital data. Only figured dimensions are to be used. Refer to floor scale for guidance.
 Check all dimensions on site prior to carrying out any works and advise any discrepancy.



*** SECTION A-A AS PROPOSED includes approved elements from Planning Application 2022/1806/P**

36-38 PARKHILL ROAD -SECTION A-A AS PROPOSED SCALE 1: 100 @ A3

PLANNING APPLICATION

Rev	Description	Date	By
*	Issued for Planning	30.08.2022	RM

KSR ARCHITECTS & INTERIOR DESIGNERS
 KSR Architects LLP info@ksrarchitects.com
 14 Greenford Street E: +44 (0)20 7882 6500
 London W4 0ND www.ksrarchitects.com

Project
36-38 Parkhill Road

Drawing Title
Section A-A- As Proposed

Date of first issue: 22.04.2022
 Scale: 1:100@A3

Drawn By: RM
 Checked By: © KSR Architects

Drawing No: **21043-P-200A**
 Rev: *

