

6.0 The Masterplan

6.15 Tree Planting Strategy

6.14.3 Outline Plots

A range of tree types and planting strategies are proposed around the site. Character areas are further defined by the choice of tree species most suited to the context of environmental factors like light and shade, but also for visual amenity and wind and water attenuation capacities in carefully chosen locations.

Blackburn Road is envisaged as a tree lined street including enhanced pockets of trees and planting at the recessed thresholds to building entrances

Anchor Trees

A number of trees throughout the site have been highlighted as 'Anchor Trees'. These trees will be planted as mature trees to enable the embedding of green infrastructure in the site and an immediate home for wildlife to occupy. These anchor trees provide a basis upon which semi-mature trees can then develop and offer further biodiverse rich spaces for an elongated lifespan.

Anchor trees have been chosen to engage with specific views around the site, providing visual links to spaces beyond the edges of buildings and emphasise the depth of streets. Their positions provide environmental benefits of shade and noise attenuation from the railways adjacent.



Small trees of clear stem height < 1.70m



Ameranchier



Pinus Sylvestris



Tall trees of clear stem height < 2.25m



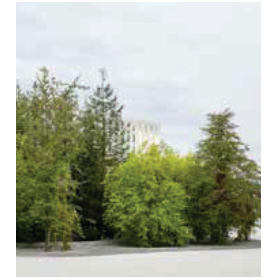
Juglans Nigra Black Walnut



Metasequoia



Cluster of trees and shrubs of deciduous and evergreen mix of 5+ species per clusters



Tree clusters



Acer Triflorum



Betula Nigra



Quercus Palustris



Tree bosque



Tree Planting Strategy to Outline Plots

See key on adjacent page

6.0 The Masterplan

6.15 Tree Planting Strategy

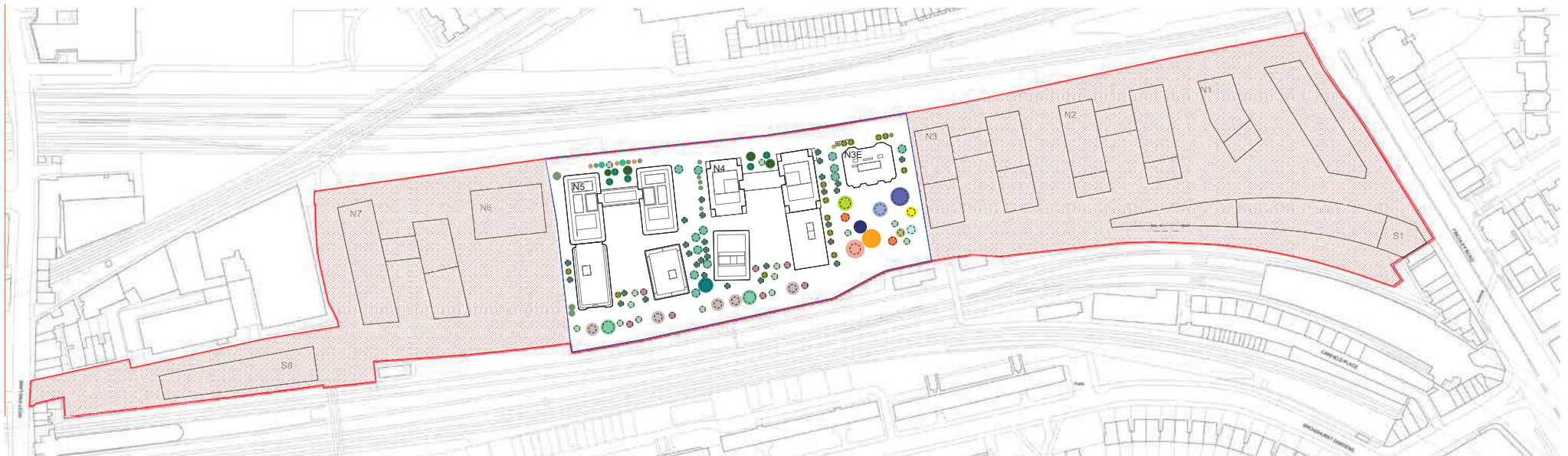
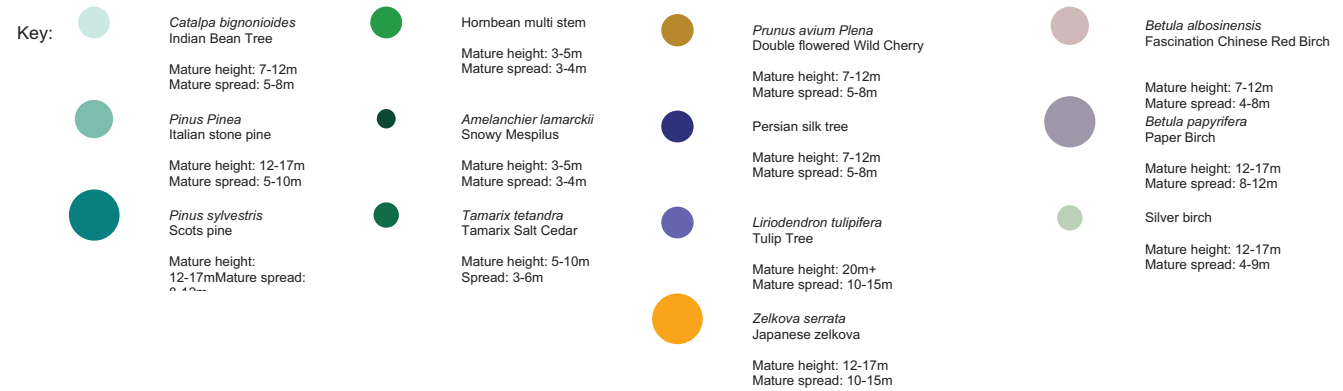
6.15.1 Detailed Plots

Extensive tree planting is a core aspect of the landscape and public realm proposals, and is proposed to perform a number of spatial functions.

Trees are mostly planted in connected tree pits or natural soil where it is possible to ensure that the tree has the necessary soil volume for its ideal development. Where natural or existing soil is not available the use of soil cells must be considered to create suitable volumes.

For each tree line or cluster, where possible, new mature trees will be positioned in groups of 2-3 marking key routes into and through the site, signifying north to south connections.

Some specimens are to be chosen in order to be planted at semi-maturity from day one.



Tree Planting Strategy to Detail Plots