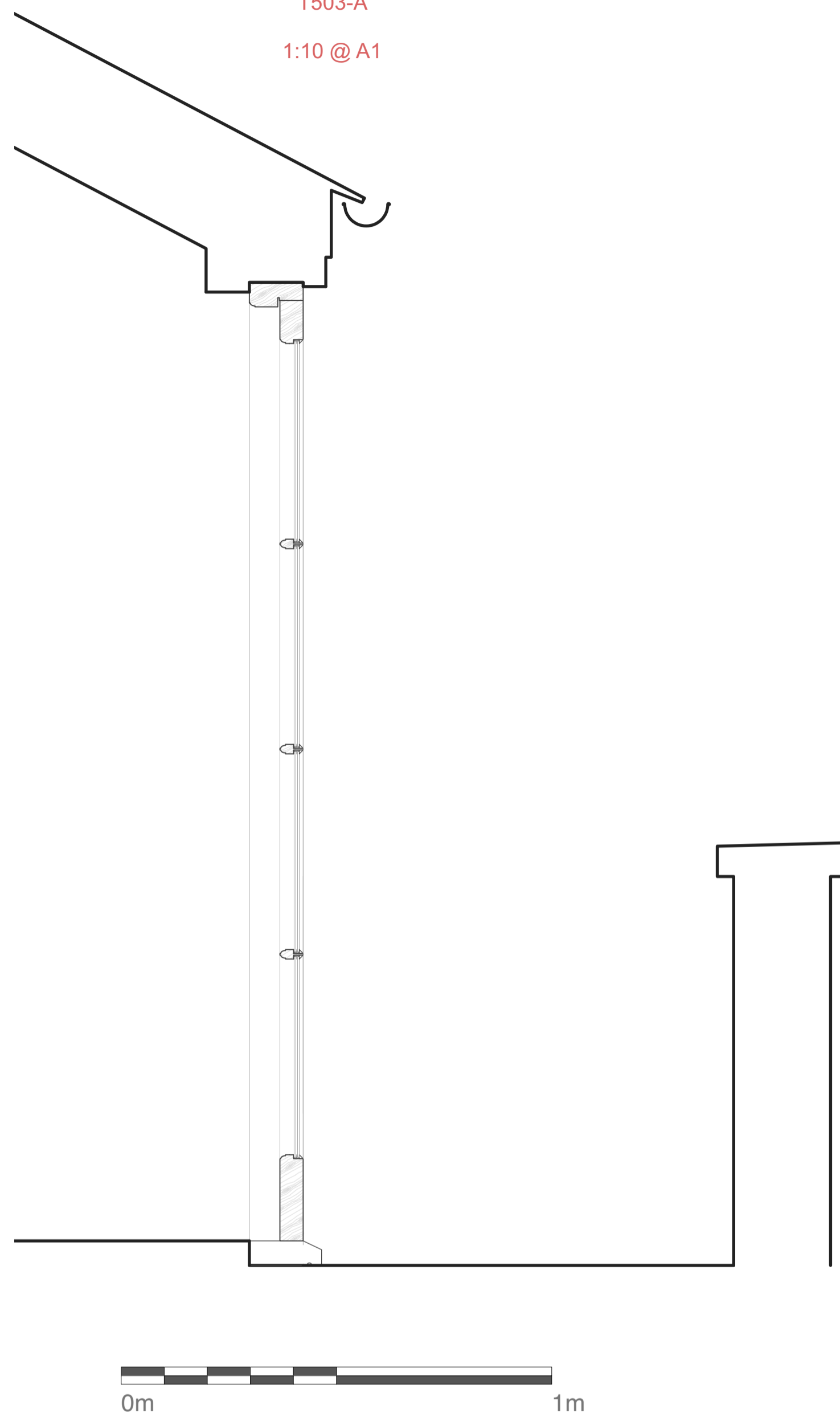


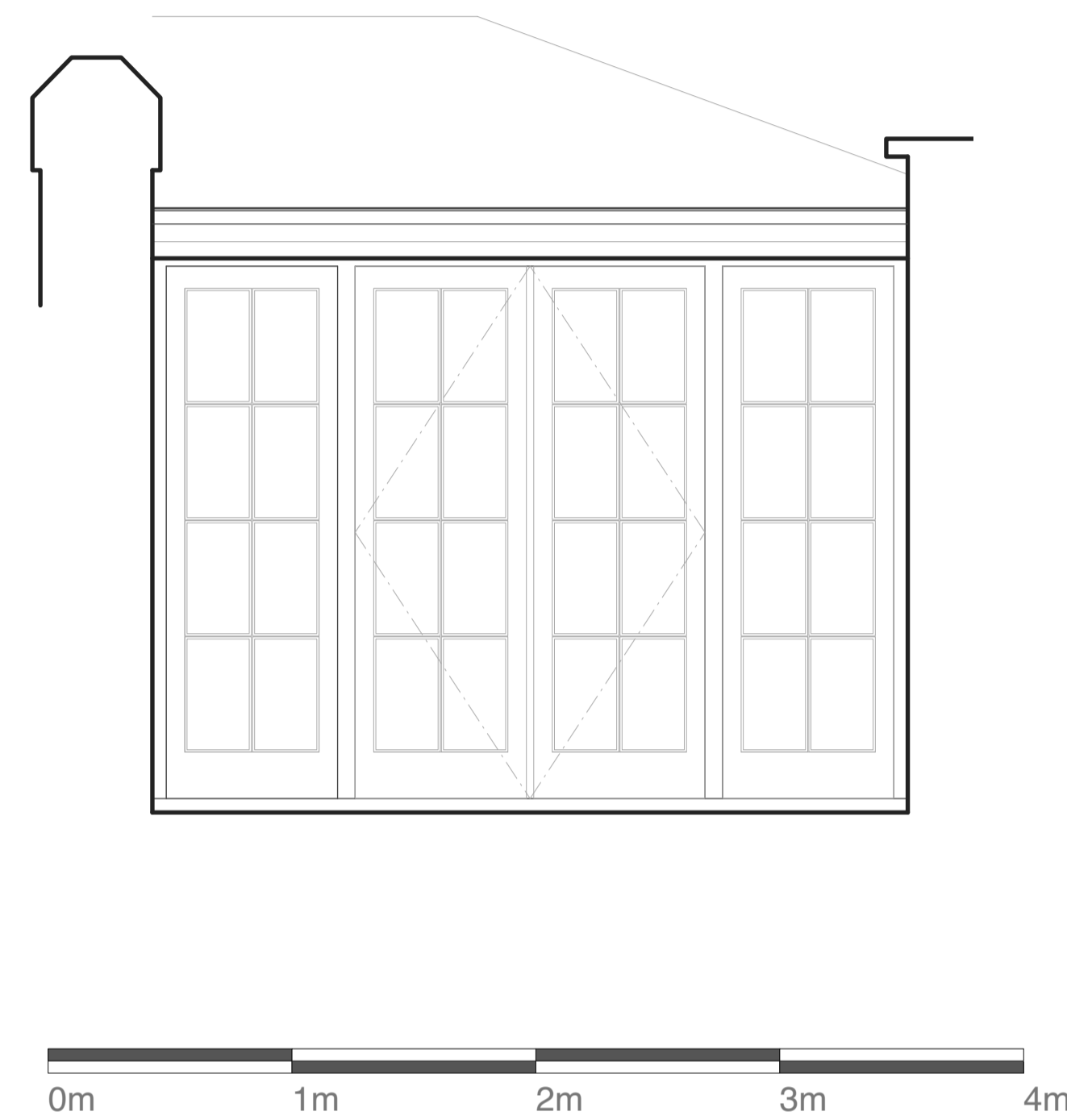
EXTERIOR JOINERY NOTES

- All exterior joinery to be hardwood timber, species to be determined in consultation with supplier.
- To be painted in white to match existing.
- Glazing to be slim typical double glazed units, minimal sightline to allow slim 22mm glazing bar.
- All moving parts (windows, doors, etc) to be fitted with draught-strips.
- Final dimensions to be determined on site after openings constructed.

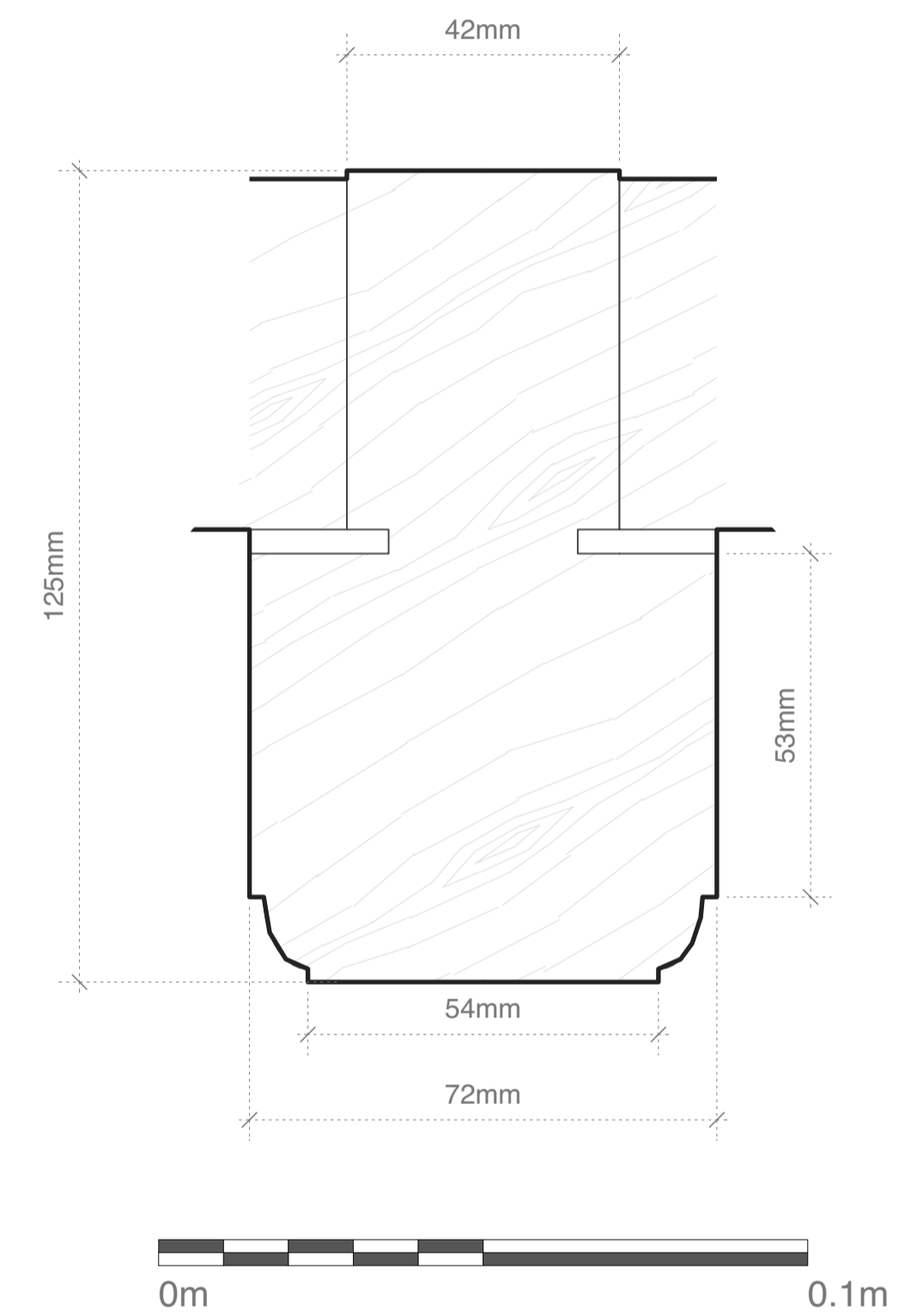
SECTION
T503-A
1:10 @ A1



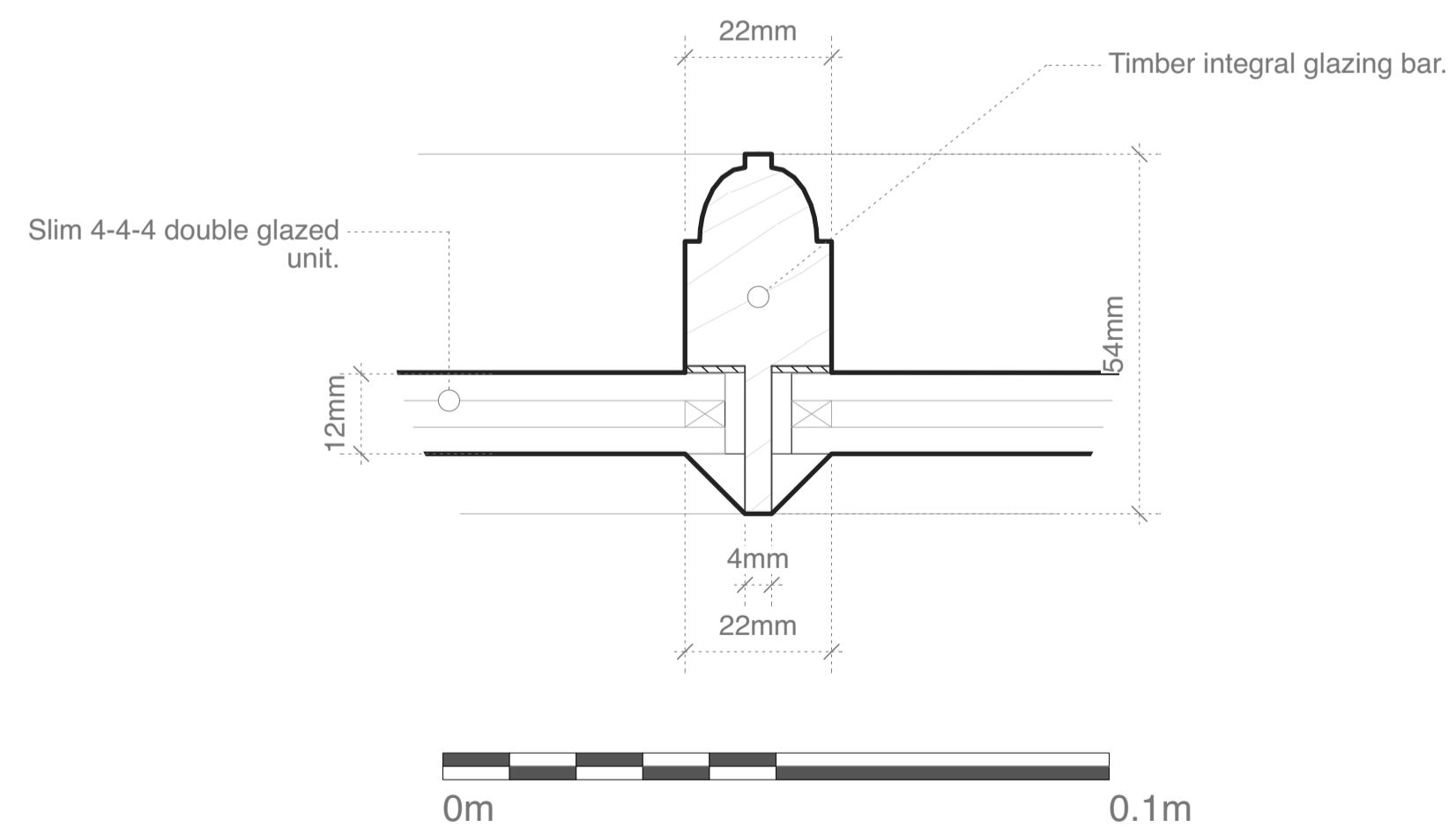
ELEVATION
T503-C
1:125 @ A1



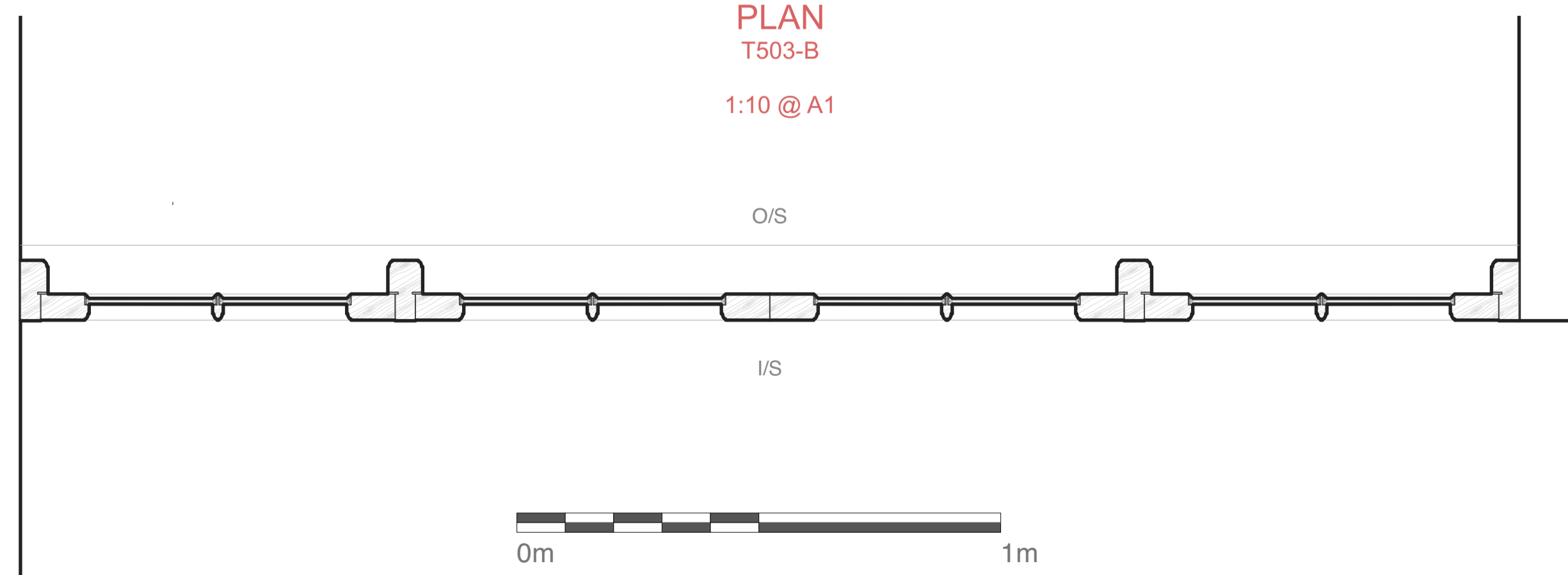
MUJLLION DETAIL
T503-E
1:1 @ A1



GLAZING BAR DETAIL
T503-D
1:1 @ A1



PLAN
T503-B
1:10 @ A1



- General Notes
- All dimensions to be verified on site
 - To be read in conjunction with all relevant documents
 - In the event of discrepancy notify the Architect immediately
 - All steel structural elements to be finished with intumescent coating, 30 minutes fire resistance. For all structural elements and connection see SE drawings.
 - This document is copyright of Hugh Cullum Architects Ltd

- Issue Status
- SK Sketch
 - T Tender
 - P Permissions
 - D Design
 - E Existing Condition
 - C Contract

Latest Revisions

REV	NOTE	DATE	DRAWN

LEGEND

Elevations 200 Series	
Sections 300 Series	
Build-Ups 400 Series	
General Detail 500 Series	
Item Detail 600 Series	
Interior Elevations 700 Series	