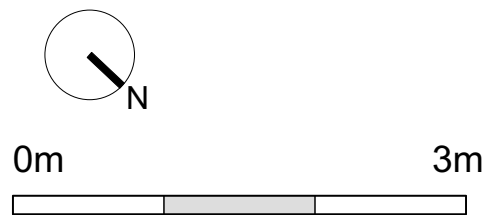
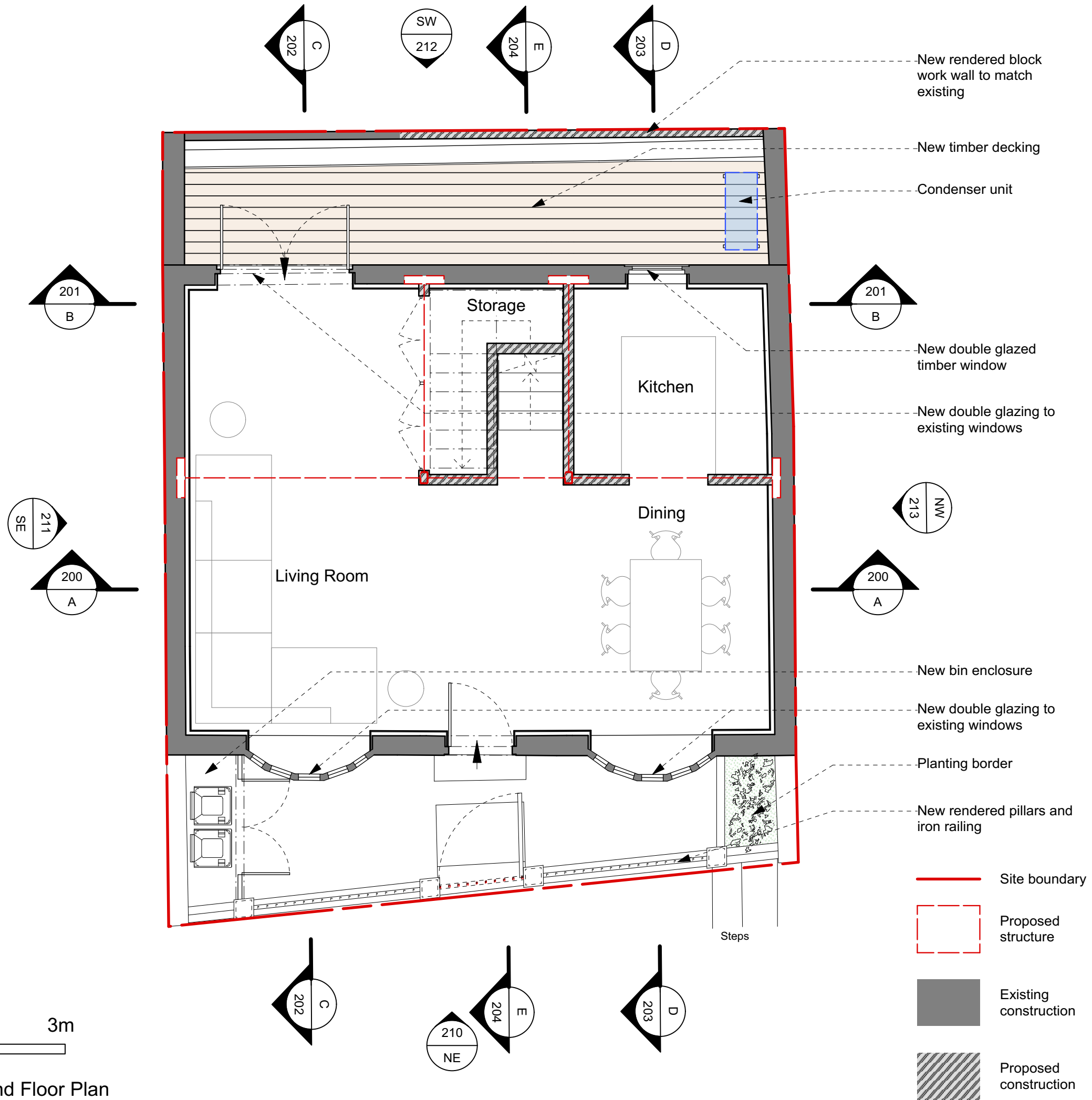


Approximate GEA:
50 SqM

Approximate GIA:
41 SqM



PROPOSED_Ground Floor Plan



General Notes
Do not scale from this drawing
All dimensions to be verified on site
To be read in conjunction with all relevant documents
In the event of discrepancy notify the Architect immediately
This document is copyright of Hugh Cullum Architects Ltd

Issue Status

SK	Sketch	E	Existing Condition
D	Design	P	Permissions
T	Tender	C	Contract

(): Issued for Planning (15.07.22 /TS/HC)

HUGH CULLUM ARCHITECTS LTD
Bloomsbury Design
61b Judd Street
London WC1H 9QT
t 020 7383 7647
f 020 7387 7645
mail@hughcullum.com

4 Lutton Terrace
Proposed
Ground Floor Plan
1:50@A3 Jul 2022
Drawn: TS Checked: HC
LT004-P101 ()