

General Notes
 Do not scale from this drawing
 All dimensions to be verified on site
 To be read in conjunction with all relevant documents
 In the event of discrepancy notify the Architect immediately
 This document is copyright of Hugh Cullum Architects Ltd

Issue Status
 SK Sketch E Existing Condition
 D Design P Permissions
 T Tender C Contract

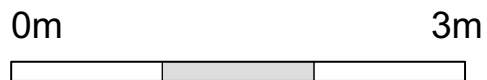
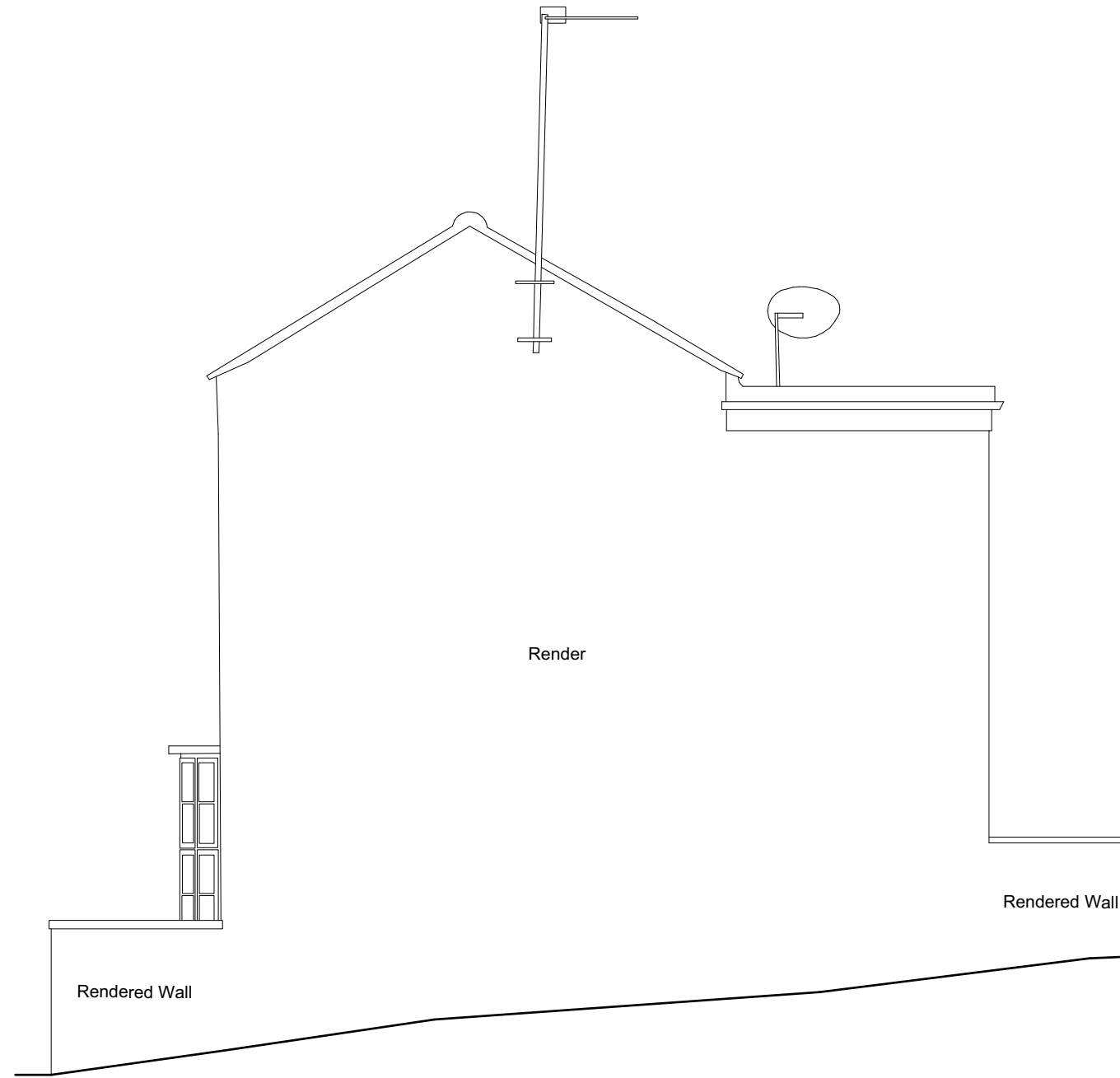
Ridge Line
 AOD+ 10.59m
 ---Z

Loft Level
 AOD+ 09.24m
 ---Z

First Floor Level
 AOD+ 06.64m
 ---Z

Ground Floor Level
 AOD+ 03.87m
 ---Z

AOD Line
 AOD+ 00.00m
 ---Z



EXISTING_North West Elevation

North West Elevation



Structure
 demolished

(): Issued for Planning

(15.07.22 /TS/HC)

HUGH CULLUM
 ARCHITECTS LTD
 Bloomsbury Design
 61b Judd Street
 London WC1H 9QT
 t 020 7383 7647
 f 020 7387 7645
 mail@hughcullum.com

4 Lutton Terrace
 As Existing
 North West Elevation
 1:50@A3 Jul/2022
 Drawn: TS Checked: HC
LT004-E213