

General Notes
 Do not scale from this drawing
 All dimensions to be verified on site
 To be read in conjunction with all relevant documents
 In the event of discrepancy notify the Architect immediately
 This document is copyright of Hugh Cullum Architects Ltd

Issue Status
 SK Sketch E Existing Condition
 D Design P Permissions
 T Tender C Contract

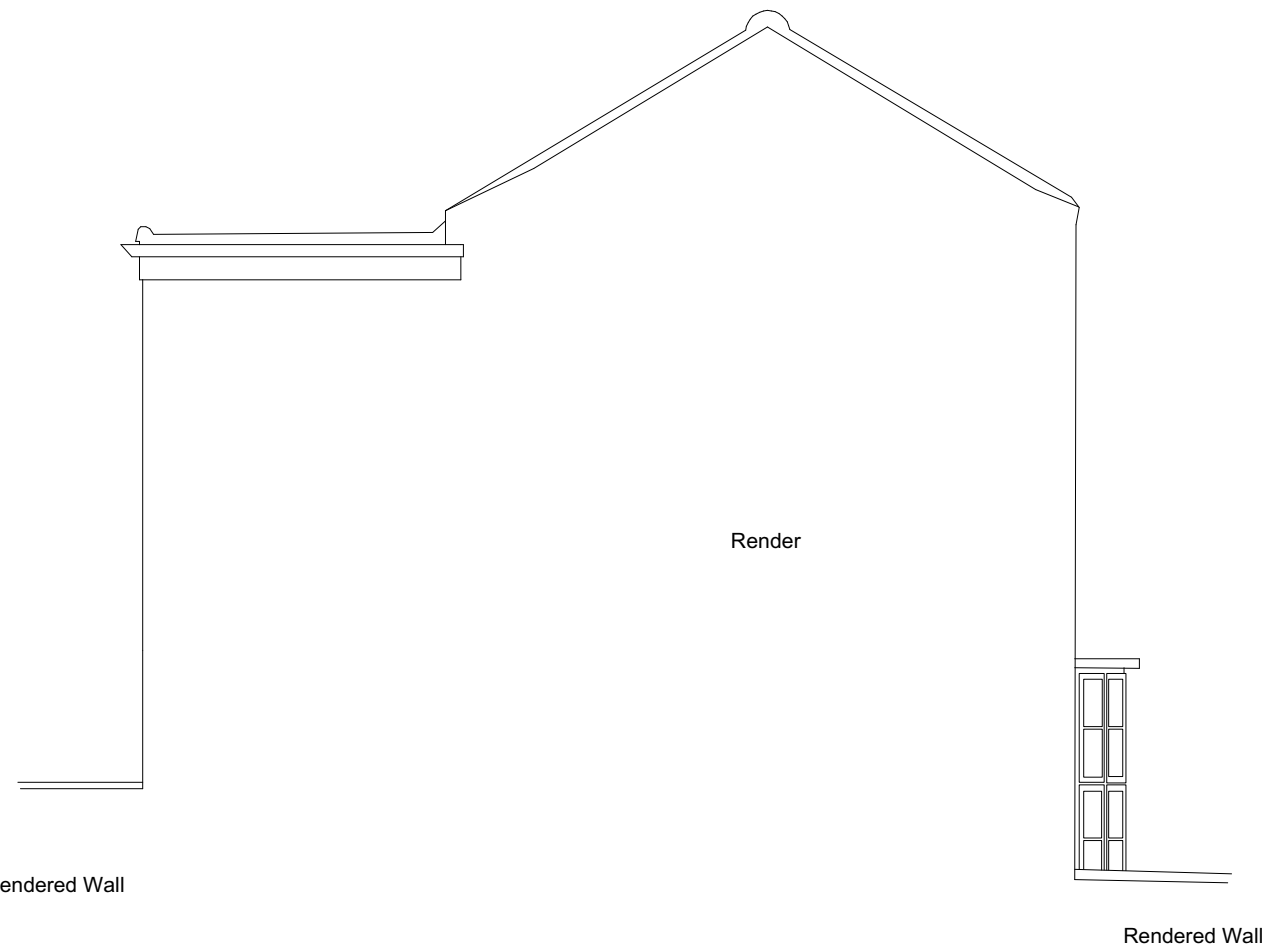
Ridge Line
 AOD+ 10.59m
 ---Z

Loft Level
 AOD+ 09.24m
 ---Z

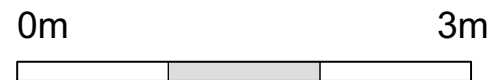
First Floor Level
 AOD+ 06.64m
 ---Z

Ground Floor Level
 AOD+ 03.87m
 ---Z

AOD Line
 AOD+ 00.00m
 ---Z



South East Elevation



EXISTING_South East Elevation



(): Issued for Planning (15.07.22 /TS/HC)

HUGH CULLUM ARCHITECTS LTD
 Bloomsbury Design
 61b Judd Street
 London WC1H 9QT
 t 020 7383 7647
 f 020 7387 7645
 mail@hughcullum.com

4 Lutton Terrace
 As Existing
 South East Elevation
 1:50@A3 Jul/2022
 Drawn: TS Checked: HC
LT004-E211