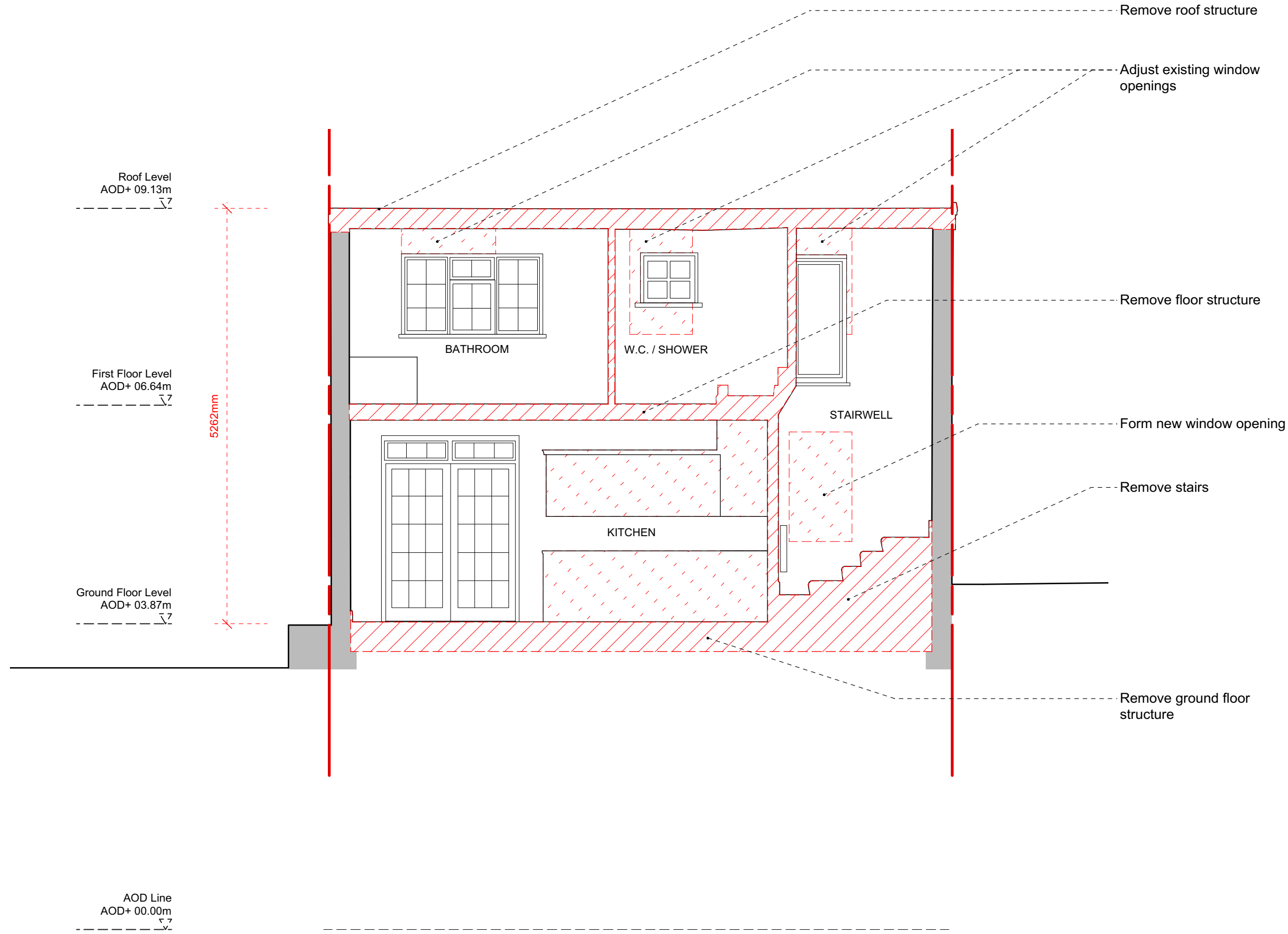


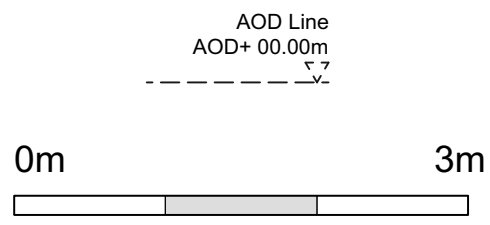
General Notes
 Do not scale from this drawing
 All dimensions to be verified on site
 To be read in conjunction with all relevant documents
 In the event of discrepancy notify the Architect immediately
 This document is copyright of Hugh Cullum Architects Ltd

Issue Status

SK	Sketch	E	Existing Condition
D	Design	P	Permissions
T	Tender	C	Contract



(): Issued for Planning (15.07.22 /TS/HC)



EXISTING_Section BB

Section BB

- Site boundary
- Structure demolished

HUGH CULLUM ARCHITECTS LTD
 Bloomsbury Design
 61b Judd Street
 London WC1H 9QT
 t 020 7383 7647
 f 020 7387 7645
 mail@hughcullum.com

4 Lutton Terrace
 As Existing
 Section BB
 1:50@A3 Jul/2022
 Drawn: TS Checked: HC
 LT004-E201()