

0m 3m



EXISTING_Section AA

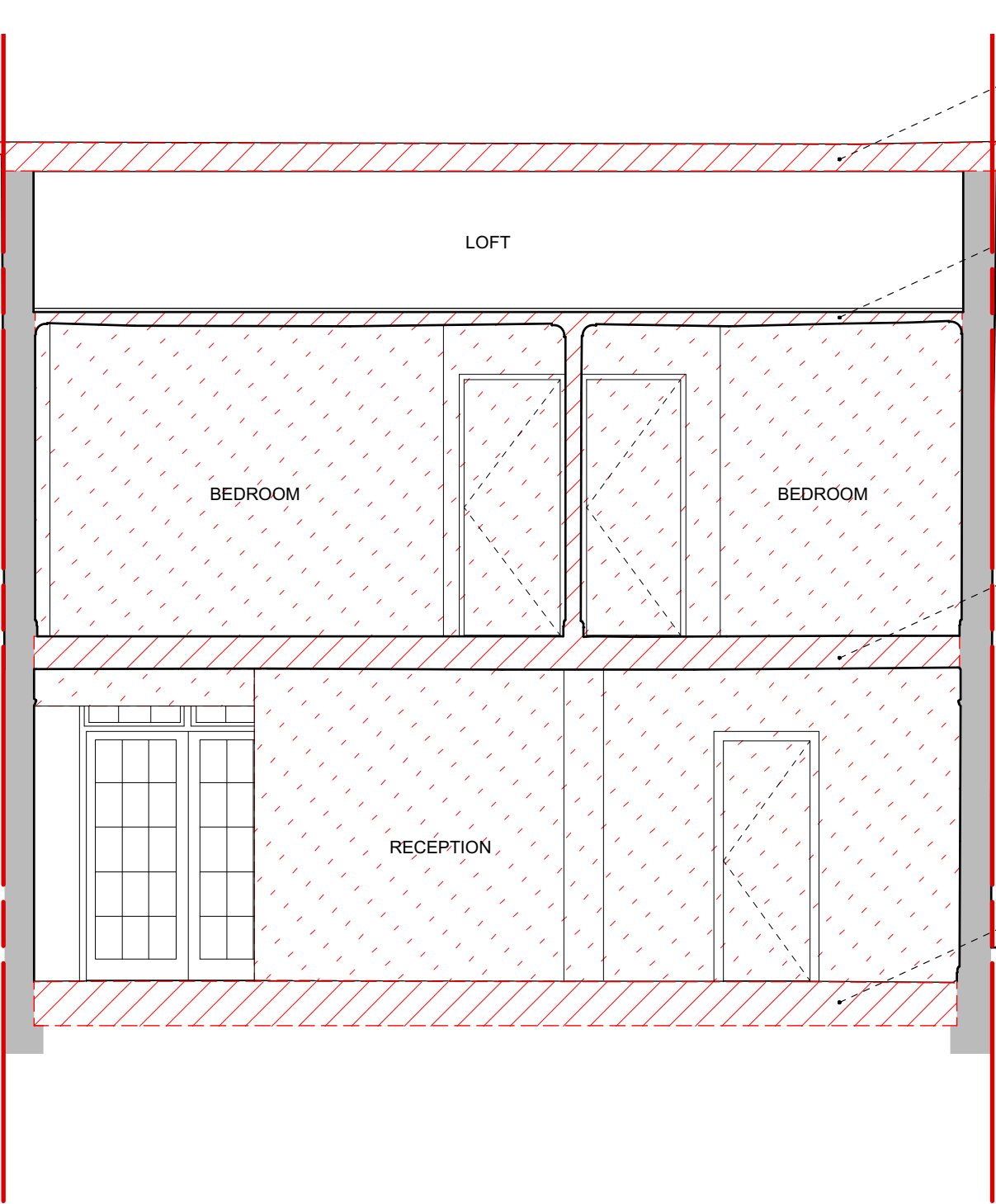
AOD Line
AOD+ 00.00m
▽7

Ground Floor Level
AOD+ 03.87m
▽7

First Floor Level
AOD+ 06.64m
▽7

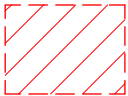
Loft Level
AOD+ 09.24m
▽7

6730mm



Section AA

Site boundary



Structure
demolished

General Notes
Do not scale from this drawing
All dimensions to be verified on site
To be read in conjunction with all relevant documents
In the event of discrepancy notify the Architect immediately
This document is copyright of Hugh Cullum Architects Ltd

Issue Status			
SK	Sketch	E	Existing Condition
D	Design	P	Permissions
T	Tender	C	Contract

() : Issued for Planning (15.07.22 /TS/HC)

HUGH CULLUM
ARCHITECTS LTD
Bloomsbury Design
61b Judd Street
London WC1H 9QT
t 020 7383 7647
f 020 7387 7645
mail@hughcullum.com

4 Lutton Terrace
As Existing
Section AA
1:50@A3 Jul/2022
Drawn: TS Checked: HC
LT004-E200()