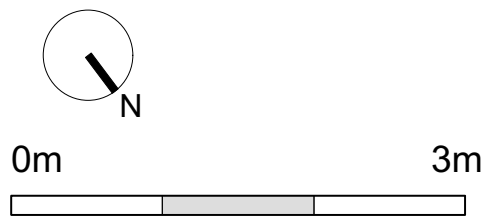
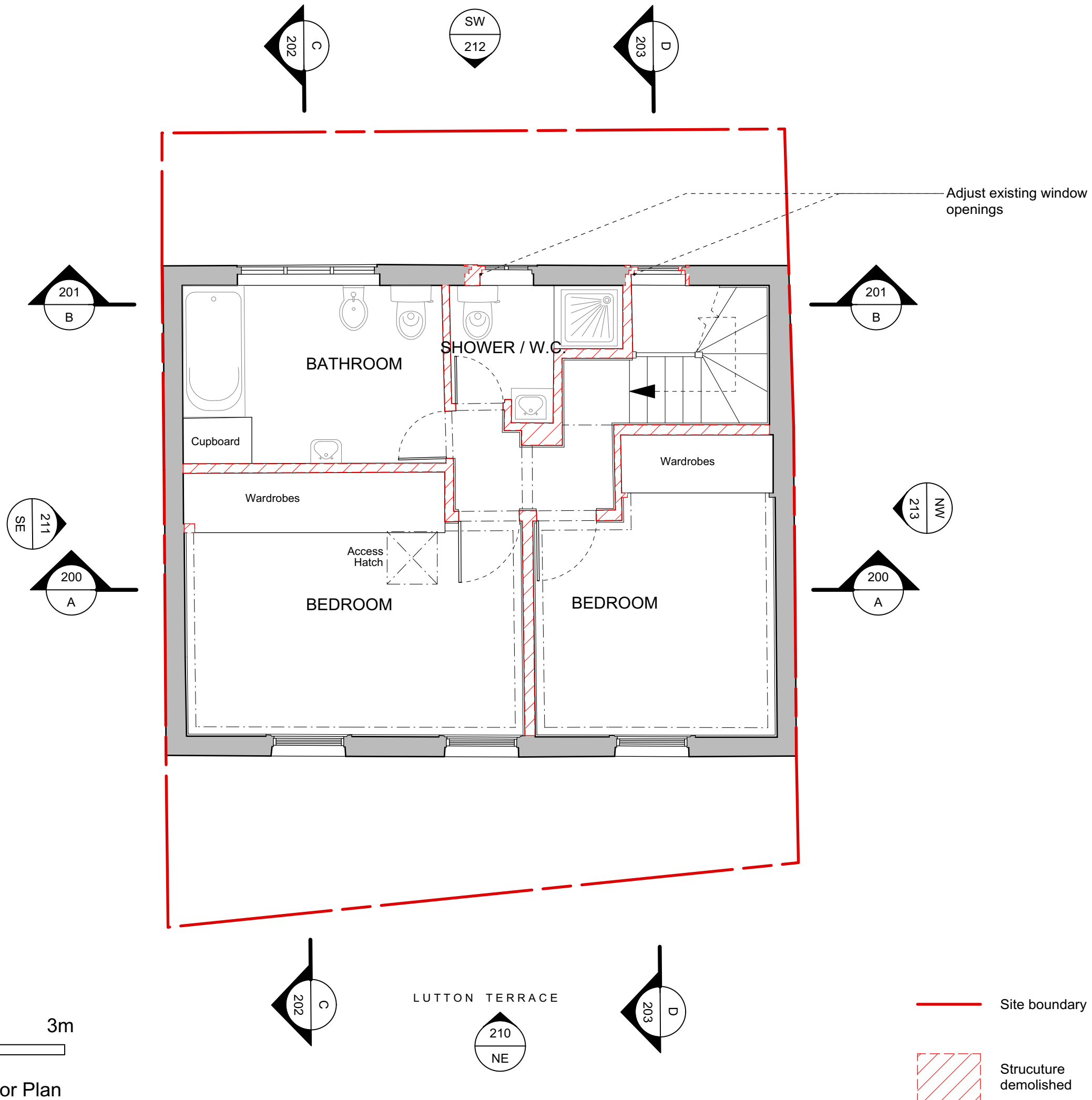


Approximate GEA:  
49 SqM

Approximate GIA:  
42 SqM



EXISTING\_First Floor Plan



- Site boundary
- Structure demolished

**General Notes**  
Do not scale from this drawing  
All dimensions to be verified on site  
To be read in conjunction with all relevant documents  
In the event of discrepancy notify the Architect immediately  
This document is copyright of Hugh Cullum Architects Ltd

**Issue Status**

SK	Sketch	E	Existing Condition
D	Design	P	Permissions
T	Tender	C	Contract

( ): Issued for Planning (15.07.22 /TS/HC)

**HUGH CULLUM ARCHITECTS LTD**  
Bloomsbury Design  
61b Judd Street  
London WC1H 9QT  
t 020 7383 7647  
f 020 7387 7645  
mail@hughcullum.com

**4 Lutton Terrace**  
As Existing  
First Floor Plan  
1:50@A3 Jul/2022  
Drawn: TS Checked: HC  
LT004-E102( )