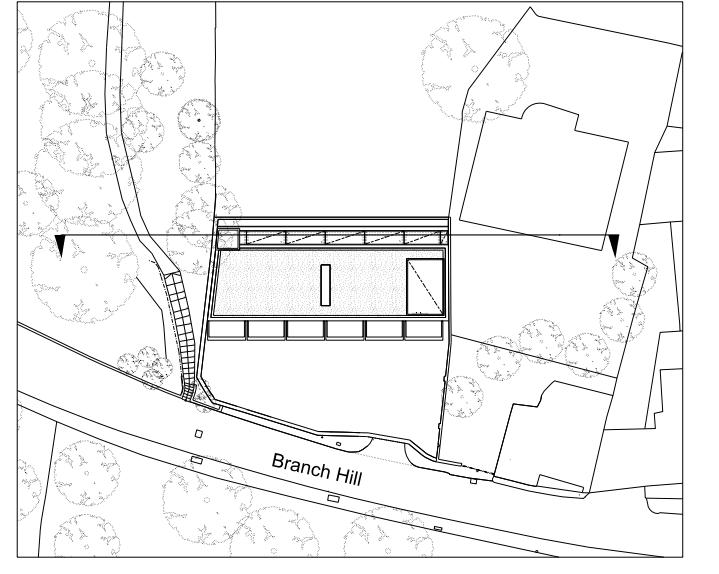


Key:	
	Existing structure / earth
	New structure
	Outline of existing house

Legend, Proposed Building	
1.	New 'Bronze' (Electroplated Aluminium) front door
2.	New 'Bronze' (Electroplated Aluminium) fixed panels
3.	New 'Bronze' (Electroplated Aluminium) sliding gate
4.	New brickwork retaining wall in stock brickwork re-claimed from demolition
5.	'Bronze' (Electroplated Aluminium) reveals to new opening in garden wall.
6.	Existing London stock brickwork wall retained
7.	'Bronze' (Electroplated Aluminium) framed double-glazed sliding door system
8.	'Bronze' (Electroplated Aluminium) frame. Refer drawing P_09
9.	Flush, floor-mounted 'Bronze' (Electroplated Aluminium) grilles to ventilate basement environment (below)
10.	Air-source heat pump enclosure. Refer to noise specialists documentation
11.	New vehicular crossover. Brick paving to match existing
12.	New Granite Setts paving to drive
13.	Mature specimen Ash in bespoke, raised, cast-stone planter. Refer to P_06
14.	'Linear' brick external wall, stagger bond
15.	Raised curb in 'Linear' brickwork
16.	Yew hedging. Refer to P_06
17.	'Bronze' (Electroplated Aluminium) double-glazed fixed window system
18.	Deep planting zone (designated by green hatch). Refer to P_06
19.	Double-glazed glass walkway to ground floor
20.	Flush, double-glazed fixed walk-on rooftop
21.	Lawn. Refer to P_06
22.	'Bronze' (anodised aluminium) steel-framed, lightweight balustrade
23.	Yorkstone paving
24.	Yorkstone coping to retaining wall
25.	Pre-fabricated 'Bronze' (Electroplated Aluminium) brise soleil
26.	Balcony: Yorkstone paved, 'Bronze' (Electroplated Aluminium) fascia
27.	'Bronze' (Electroplated Aluminium) portal frame with flush, fixed, double-glazed, obscured, sand blasted glass infill between frame
28.	'Bronze' (Electroplated Aluminium) chimney flue
29.	Lift and counter weight. Lift overrun formed in 'linear' brick, with linear brick lid
30.	Fixed, double-glazed flush rooftop with obscured sand blasted glass
31.	Sedum roof, refer to P_06
32.	Car lift
33.	Car turn-table within basement
34.	Polyester powder-coated coping
35.	Mature specimen Copper Beech within deep planting zone. Refer to P_06
36.	Anodised aluminium feature spandrel panel
37.	'Bronze' (Electroplated Aluminium) framed double-glazed tilt-turn window system
38.	Mature specimen Birch, within deep planting zone. Refer to P_06
39.	Operable, double-glazed flush rooftop
40.	Proposed timber lattice atop London Stock brick garden wall
41.	Glazed access hatch
42.	Fixed, double-glazed flush rooftop with obscured privacy film below
43.	Solar PVs



Rev E	15/06/2022	Section 73 Application
Rev D	28/02/2020	Solar PVs added to roof
Rev C	02/02/2018	Minor Material Amendment Application
Rev B	17/10/2013	Minor Material Amendment Application
Rev A	07/06/2013	Issued for Planning

PLANNING ISSUE

Project No.

12021

Client

Cheryl Plaza

Date

June 2013

Scale

1:50@A00, 1:100@A1

Project

Judges Lodge, Branch Hill

Drawing Title:

Existing and Proposed Section DD

Drawing No.

P_17

Rev.

E

Drawn

LH

Approved

MW

Signed