

Key:

Existing structure / earth

New structure

Legend, Proposed Building

1.

New 'Bronze' (Electroplated Aluminium) front door

2.

New 'Bronze' (Electroplated Aluminium) fixed panels

3.

New 'Bronze' (Electroplated Aluminium) sliding gate

4.

New brickwork retaining wall in stock brickwork re-claimed from demolition

5.

'Bronze' (Electroplated Aluminium) reveals to new opening in garden wall.

6.

Existing London stock brickwork wall retained

7.

'Bronze' (Electroplated Aluminium) framed double-glazed sliding door system

8.

'Bronze' (Electroplated Aluminium) frame. Refer drawing P\_09

9.

Flush, floor-mounted 'Bronze' (Electroplated Aluminium) grilles to ventilate basement environment (below)

10.

Air-source heat pump enclosure. Refer to noise specialists documentation

11.

New vehicular crossover. Brick paving to match existing

12.

New Granite Setts paving to drive

13.

Mature specimen Ash in bespoke, raised, cast-stone planter. Refer to P\_06

14.

'Linear' brick external wall, stagger bond

15.

Raised curb in 'Linear' brickwork

16.

Yew hedging. Refer to P\_06

17.

'Bronze' (Electroplated Aluminium) double-glazed fixed window system

18.

Deep planting zone (designated by green hatch). Refer to P\_06

19.

Double-glazed glass walkway to ground floor

20.

Flush, double-glazed fixed walk-on rooftop

21.

Lawn. Refer to P\_06

22.

'Bronze' (anodised aluminium) steel-framed, lightweight balustrade

23.

Yorkstone paving

24.

Yorkstone coping to retaining wall

25.

Pre-fabricated 'Bronze' (Electroplated Aluminium) brise soleil

26.

Balcony: Yorkstone paved, 'Bronze' (Electroplated Aluminium) fascia

27.

'Bronze' (Electroplated Aluminium) portal frame with flush, fixed, double-glazed, obscured, sand blasted glass infill between frame

28.

'Bronze' (Electroplated Aluminium) chimney flue

29.

Lift and counter weight. Lift overrun formed in 'linear' brick, with linear brick lid

30.

Fixed, double-glazed flush rooftop with obscured sand blasted glass

31.

Sedum roof, refer to P\_06

32.

Car lift

33.

Ger-tum-table within basement

34.

Polyester powder-coated coping

35.

Mature specimen Copper Beech within deep planting zone. Refer to P\_06

36.

Anodised aluminium feature spandrel panel

37.

Solid access door to rear terrace for maintenance purposes; detailed to match proposed linear brickwork

38.

Mature specimen Birch, within deep planting zone. Refer to P\_06

39.

Operable, double-glazed flush rooftop

40.

Proposed timber lattice atop London Stock brick garden wall

41.

Glazed access hatch

42.

Fixed, double-glazed flush rooftop with obscured privacy fins below

Lifetime Homes Criteria Key:

Refer to 4.0 Lifetime Homes Statement within the Design and Access Statement

1.

Parking

2.

Approach to dwelling from Parking

3.

Approach to all Entrances

4.

Entrances

5.

Communal Stairs and Lifts (Not Applicable)

6.

Internal Doorways and Hallways

7.

Circulation Space

8.

Entrance level living space

9.

Potential for entrance level bed-space

10.

Entrance level WC and shower drainage

11.

WC and bathroom walls

12.

Stairs and potential through-floor lift in dwellings

13.

Potential for fitting of hoists and bedroom / bathroom relationship

14.

Bathrooms

15.

Glazing and window handle heights

16.

Location of Service Controls

Rev E

17/11/2021

Non-Material Amendment Application

Rev D

21/06/2021

Revisions built

Rev C

28/02/2020

Minor Material Amendment Application

Rev B

17/10/2013

Issued for Planning

Rev -

07/11/2017

Issued for information

## PLANNING ISSUE

Project No. 12021

Client Cheryl Plaza

Date June 2013

Scale 1:50@A00, 1:100@A1

Project Judges Lodge, Branch Hill

Drawing Title: Proposed Roof Plan

Drawing No. P\_05 Rev. E

Drawn SWH Approved SW Signed TB

Marek Wojciechowski Architects

28 Margaret Street W1W 8RZ

T. 020 7580 8336

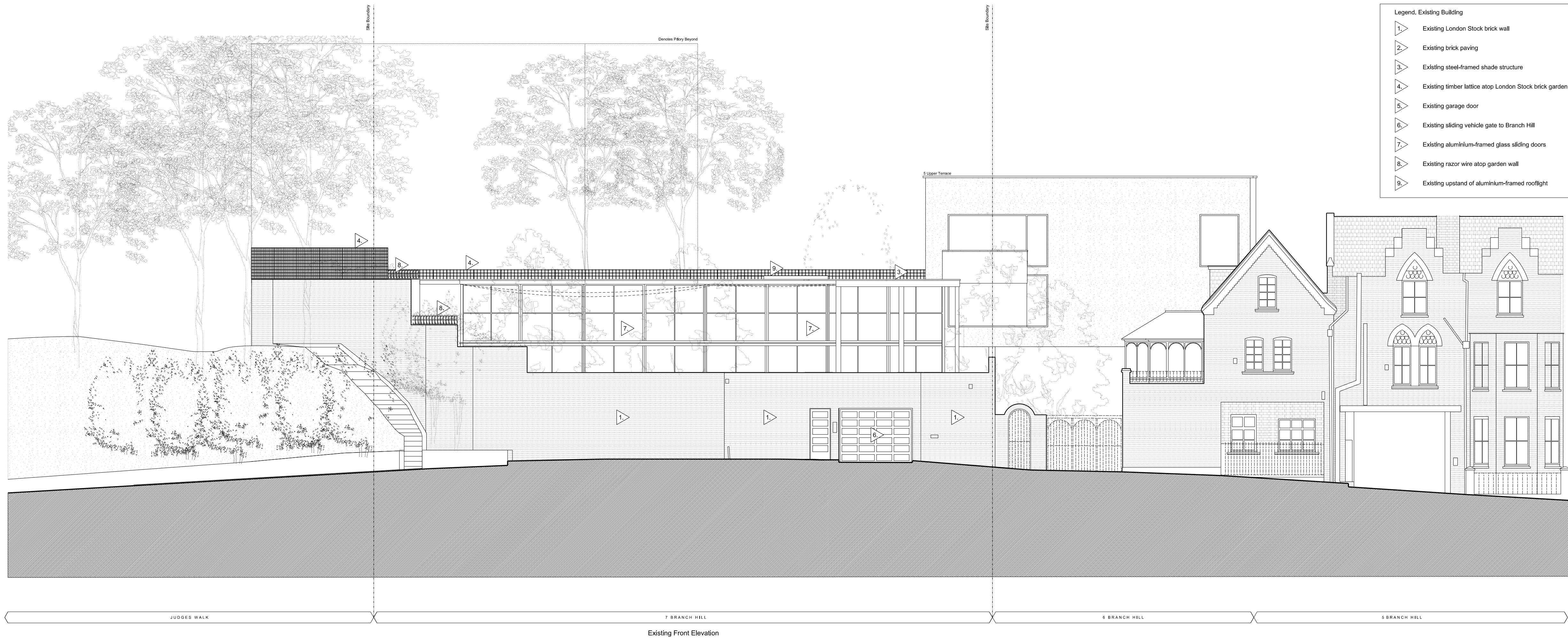
www.mw-a.co.uk

Copyright Marek Wojciechowski Architects Limited.

No implied license exists. This drawing should not be used to calculate areas for the purposes of valuation. All dimensions to be checked on site by the contractor and such dimensions to be their responsibility. Do not scale drawings. All work must comply with relevant British Standards and Building Regulations requirements. Drawing errors and omissions to be reported to the architect.

0 1m 2m 4m 6m 8m 10m





Key:

- Existing structure / earth
- New structure
- Outline of existing house

Legend, Proposed Building

1. New 'Bronze' (Electroplated Aluminium) front door

2. New 'Bronze' (Electroplated Aluminium) fixed panels

3. New 'Bronze' (Electroplated Aluminium) sliding gate

4. New brickwork retaining wall in stock brickwork re-claimed from demolition

5. 'Bronze' (Electroplated Aluminium) reveals to new opening in garden wall

6. Existing London stock brickwork wall retained

7. 'Bronze' (Electroplated Aluminium) framed double-glazed sliding door system

8. 'Bronze' (Electroplated Aluminium) frame. Refer drawing P\_09

9. Flush, floor-mounted 'Bronze' (Electroplated Aluminium) grilles to ventilate basement environment (below)

10. Air-source heat pump enclosure. Refer to noise specialists documentation

11. New vehicular crossover. Brick paving to match existing

12. New Granite Set paving to drive

13. Mature specimen Ash in bespoke, raised, cast-stone planter. Refer to P\_06

14. 'Linear' brick external wall, stagger bond

15. Raised curb in 'Linear' brickwork

16. Yew hedging. Refer to P\_06

17. 'Bronze' (Electroplated Aluminium) double-glazed fixed window system

18. Deep planting zone (designated by green hatch). Refer to P\_06

19. Double-glazed glass walkway to ground floor

20. Flush, double-glazed fixed walk-on rooflight

21. Lawn. Refer to P\_06

22. 'Bronze' (anodised aluminium) steel-framed, lightweight balustrade

23. Yorkstone paving

24. Yorkstone coping to retaining wall

25. Pre-fabricated 'Bronze' (Electroplated Aluminium) brise soleil

26. Balcony: Yorkstone paved, 'Bronze' (Electroplated Aluminium) fascia

27. 'Bronze' (Electroplated Aluminium) portal frame with flush, fixed, double-glazed, obscured, sand blasted glass infill between frame

28. 'Bronze' (Electroplated Aluminium) chimney flue

29. Lift and counter weight. Lift overrun formed in 'linear' brick, with linear brick lid

30. Fixed, double-glazed flush rooflight with obscured sand blasted glass

31. Sedum roof, refer to P\_06

32. Car lift

33. Ger-tum-table within basement

34. Polyester powder-coated coping

35. Mature specimen Copper Beech within deep planting zone. Refer to P\_06

36. Anodised aluminium feature spandrel panel

37. Solid access door to rear terrace for maintenance purposes; detailed to match proposed linear brickwork

38. Mature specimen Birch, within deep planting zone. Refer to P\_06

39. Operable, double-glazed flush rooflight

40. Proposed timber lattice atop London Stock brick garden wall

41. Glazed access hatch

42. Fixed, double-glazed flush rooflight with obscured privacy fins below

Branch Hill

Revisions as published

Rev E	17/11/2021	Non-Material Amendment Application
Rev D	21/06/2021	Non-Material Amendment Application
Rev C	28/02/2020	Non-Material Amendment Application
Rev B	17/10/2013	Issued for Planning
Rev -	07/11/2017	Issued for information

## PLANNING ISSUE

Project No. 12021

Client Cheryl Plaza

Date June 2013

Scale 1:50@A00, 1:100@A1

Project Judges Lodge, Branch Hill

Drawing Title: Existing & Proposed Branch Hill Elevation

Drawing No. P\_07 Rev. E

Drawn SWH Approved SW Signed TB

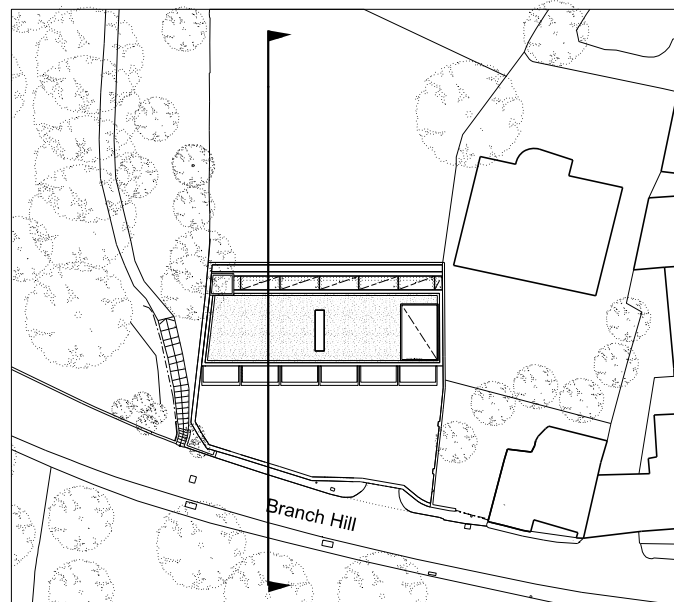
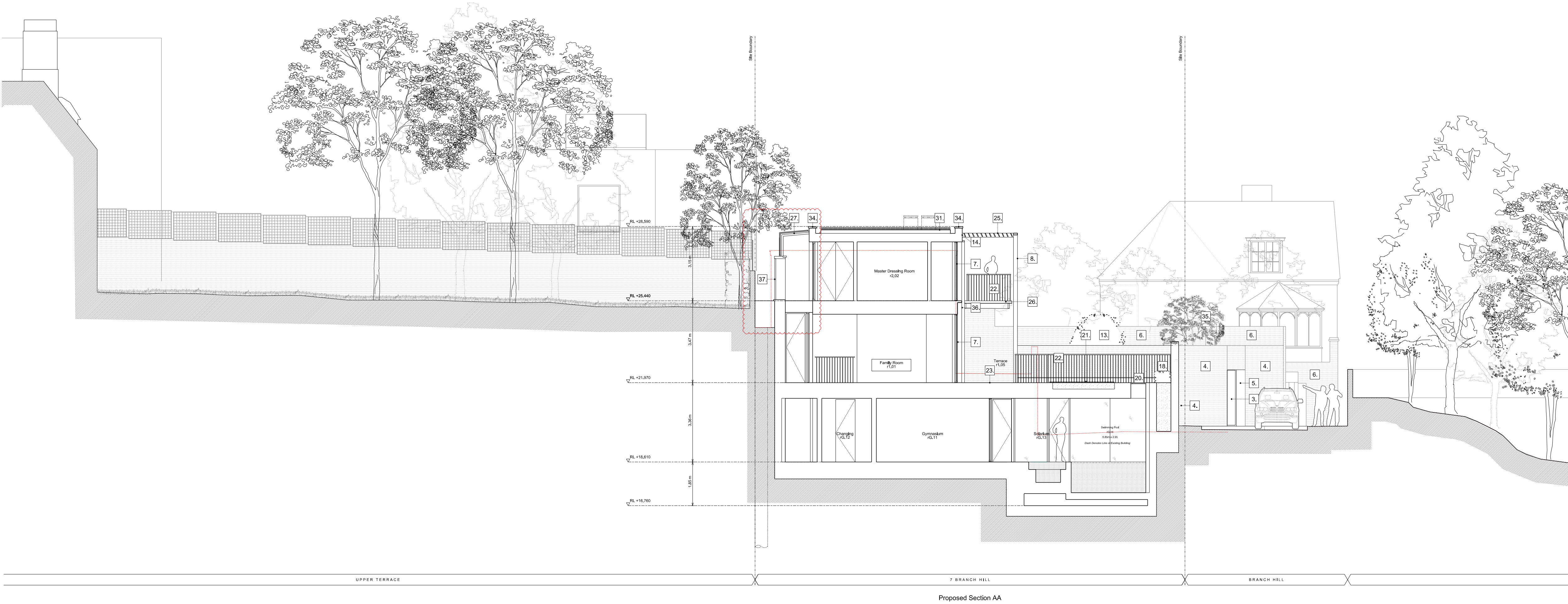
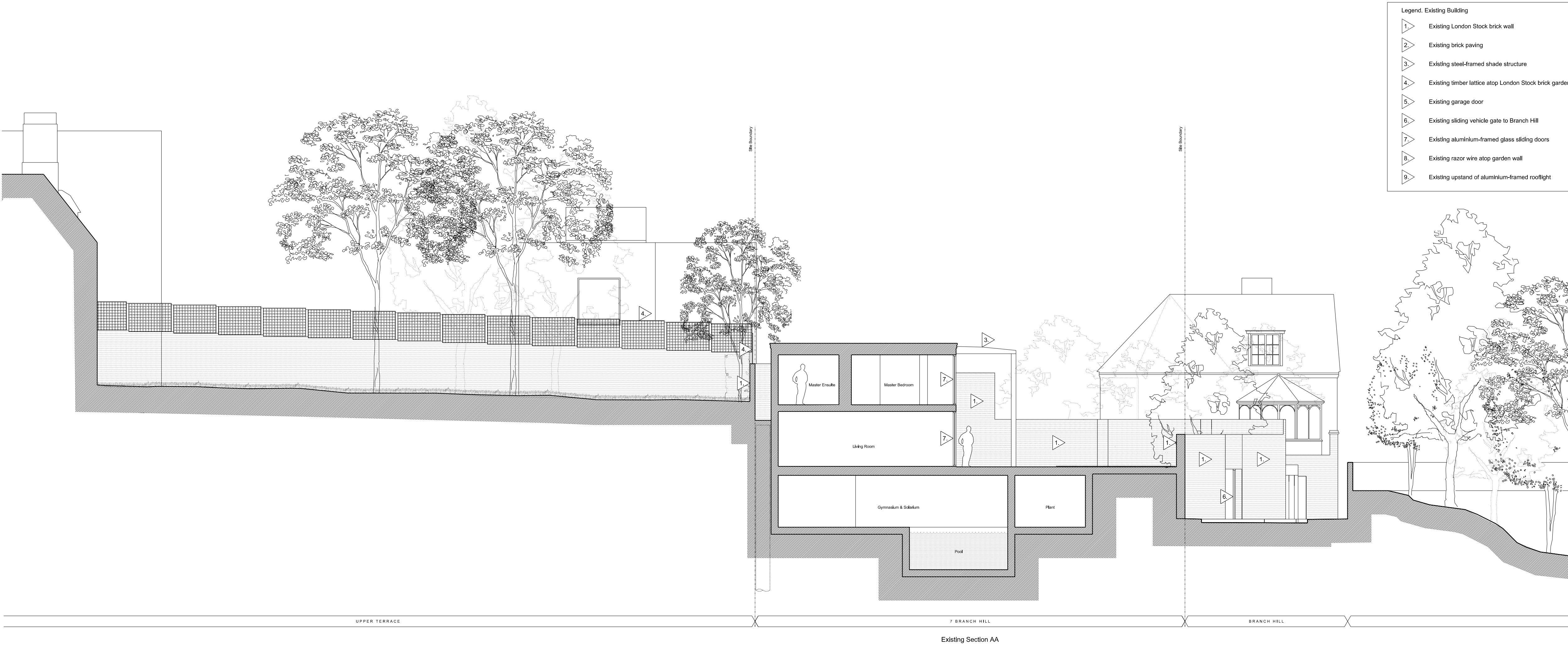


28 Margaret Street W1W 8RZ T. 020 7580 8336 www.mw-a.co.uk

Copyright Marek Wojciechowski Architects Limited.  
No implied license exists. This drawing should not be used to calculate areas for the purposes of valuation. All dimensions to be checked on site by the contractor and such dimensions to be their responsibility. Do not scale drawings. All work must comply with relevant British Standards and Building Regulations requirements. Drawing errors and omissions to be reported to the architect.

0 1m 2m 4m 6m 8m 10m





Rev G	14/12/2021	Non-Material Amendment Application
Rev F	17/11/2021	Revisions bubbled
Rev E	21/06/2021	Non-Material Amendment Application
Rev D	28/02/2020	Minor Material Amendment Application
Rev C	02/02/2018	Minor Material Amendment Application
Rev B	17/10/2013	Issued for Planning
Rev A	07/06/2013	Issued for Planning

## PLANNING ISSUE

Project No. 12021

Client Cheryl Plaza

Date June 2013

Scale 1:50@A00, 1:100@A1

Project Judges Lodge, Branch Hill

Drawing Title: Existing & Proposed Section AA

Drawing No.	P_14	Rev.	G
Drawn	SWH	Approved	SW
		Signed	TB

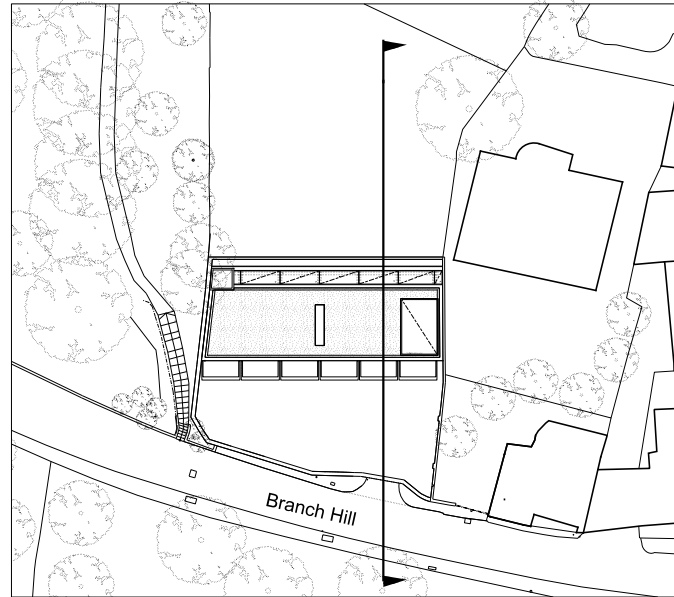
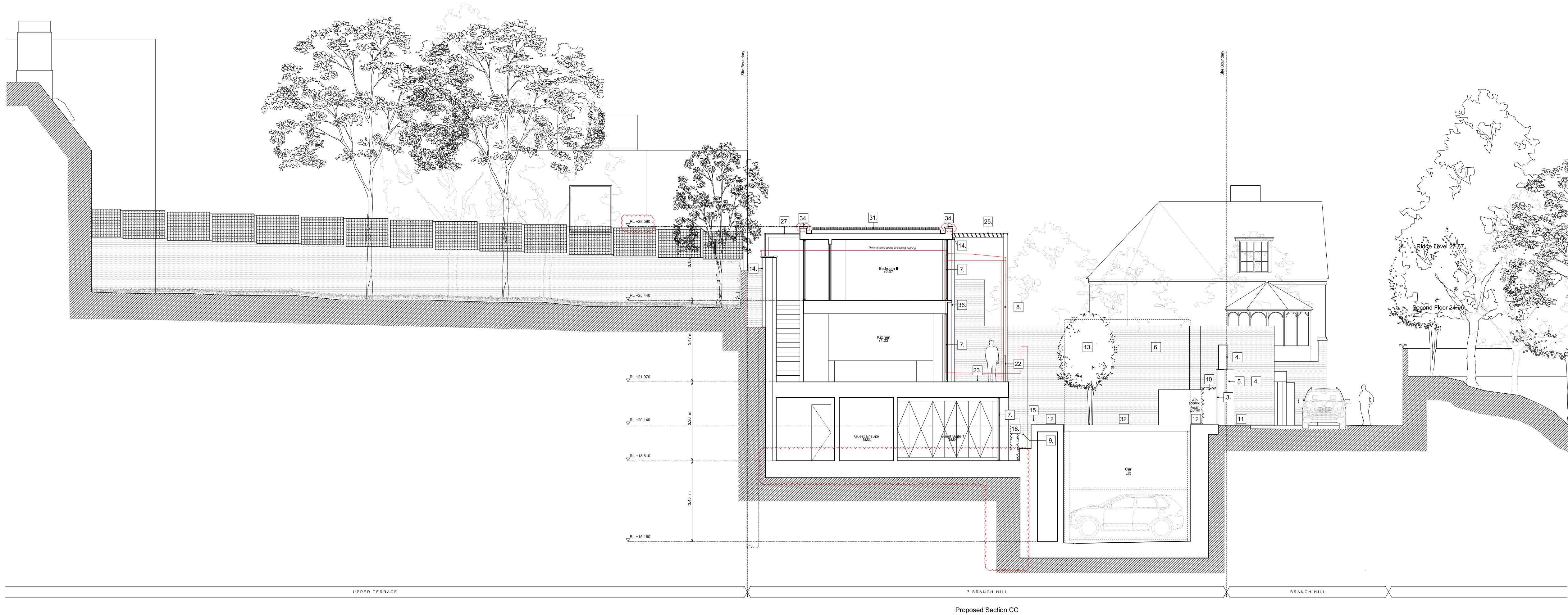
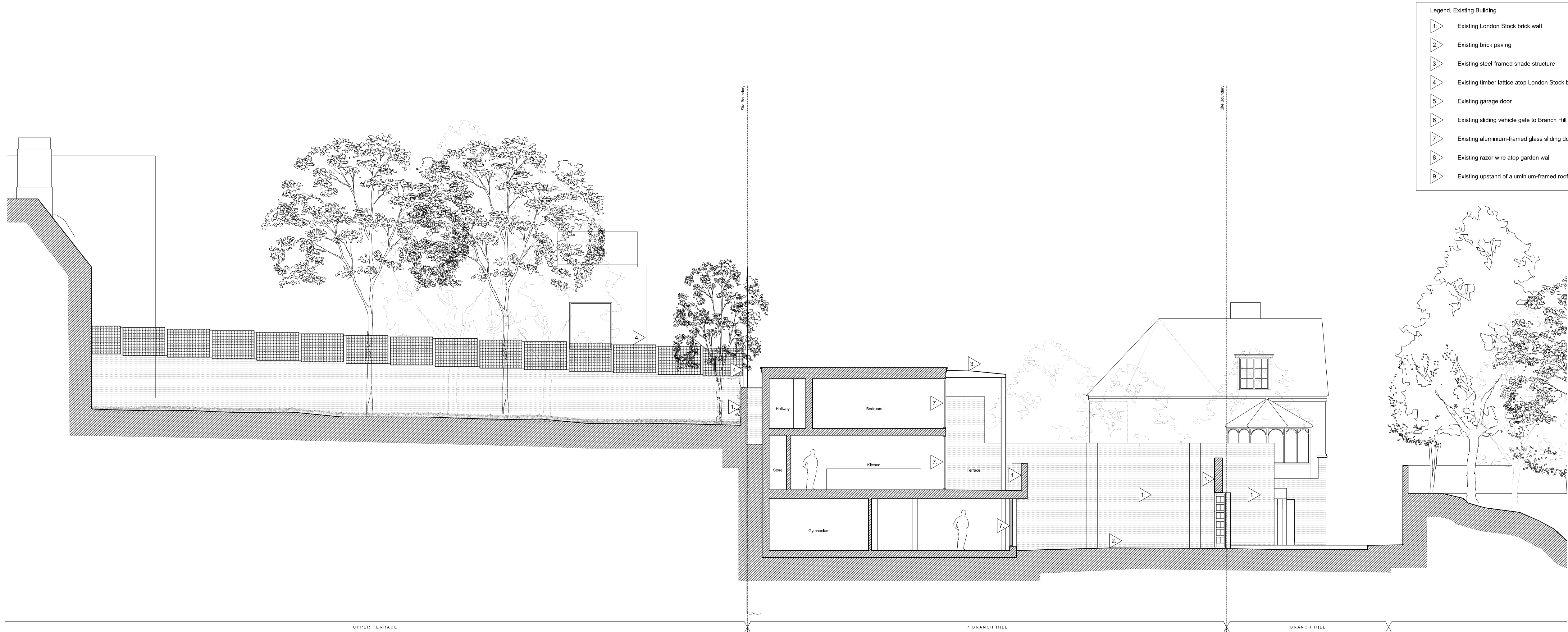


28 Margaret Street W1W 8RZ T. 020 7580 8336 www.mw-a.co.uk

Copyright Marek Wojciechowski Architects Limited.  
No implied license exists. This drawing should not be used to calculate areas for the purposes of valuation. All dimensions to be checked on site by the contractor and such dimensions to be their responsibility. Do not scale drawings. All work must comply with relevant British Standards and Building Regulations requirements. Drawing errors and omissions to be reported to the architect.







Rev D	28/02/2020	Minor Material Amendment Application
Rev C	02/02/2018	Minor Material Amendment Application
Rev B	17/10/2013	Issued for Planning
Rev A	07/06/2013	Issued for Planning

## PLANNING ISSUE

Project No. 12021  
Client Cheryl Plaza  
Date June 2013  
Scale 1:50@A00, 1:100@A1  
Project Judges Lodge, Branch Hill

Drawing Title: Existing & Proposed Section CC

Drawing No. P\_16 Rev. D

Drawn LH Approved MW Signed

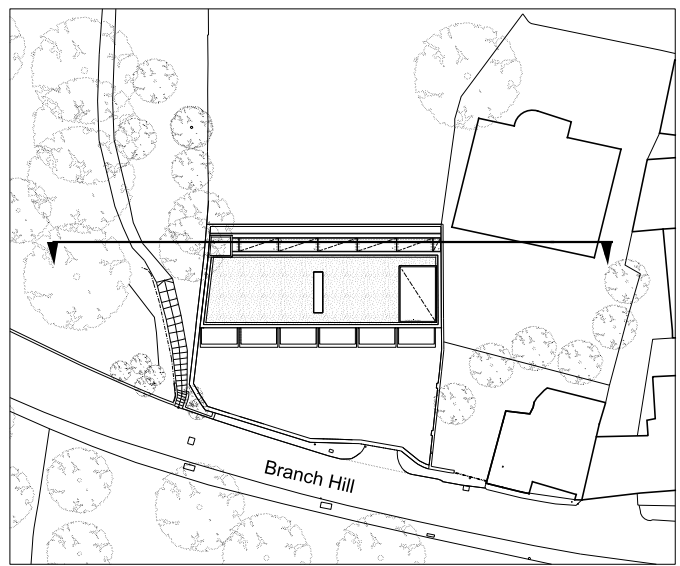
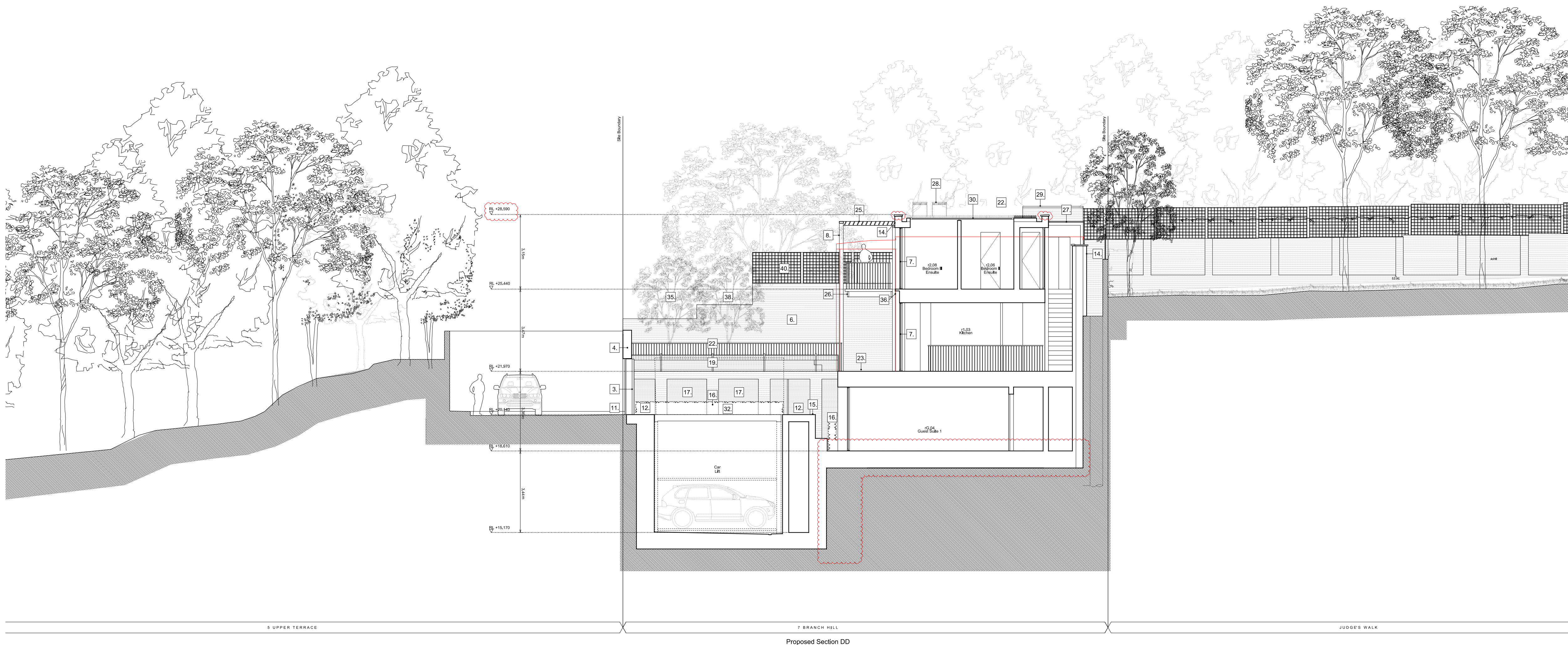


28 Margaret Street W1W 8RZ T. 020 7580 8336 www.mw-a.co.uk

Copyright Marek Wojciechowski Architects Limited.  
No implied license exists. This drawing should not be used to calculate areas for the purposes of valuation. All dimensions to be checked on site by the contractor and such dimensions to be their responsibility. Do not scale drawings. All work must comply with relevant British Standards and Building Regulations requirements. Drawing errors and omissions to be reported to the architect.

0 1m 2m 4m 6m 10m





Rev D	28/02/2020	Minor Material Ammendment Application Revisions bubbled
Rev C	02/02/2018	Minor Material Ammendment Application Revisions bubbled
Rev B	17/10/2013	Issued for Planning Revisions bubbled
Rev A	07/06/2013	Issued for Planning

## PLANNING ISSUE

Project No. 12021

Client Cheryl Plaza

Date June 2013

Scale 1:50@A00, 1:100@A1

Project Judges Lodge, Branch Hill

Drawing Title: Existing and Proposed Section DD

Drawing No. P\_17 Rev. D

Drawn LH Approved MW Signed



28 Margaret Street W1W 8RZ T. 020 7580 8336 www.mw-a.co.uk

Copyright Marek Wojciechowski Architects Limited.  
No implied license exists. This drawing should not be used to calculate areas for the purposes of valuation. All dimensions to be checked on site by the contractor and such dimensions to be their responsibility. Do not scale drawings. All work must comply with relevant British Standards and Building Regulations requirements. Drawing errors and omissions to be reported to the architect.

0 1m 2m 4m 6m 10m