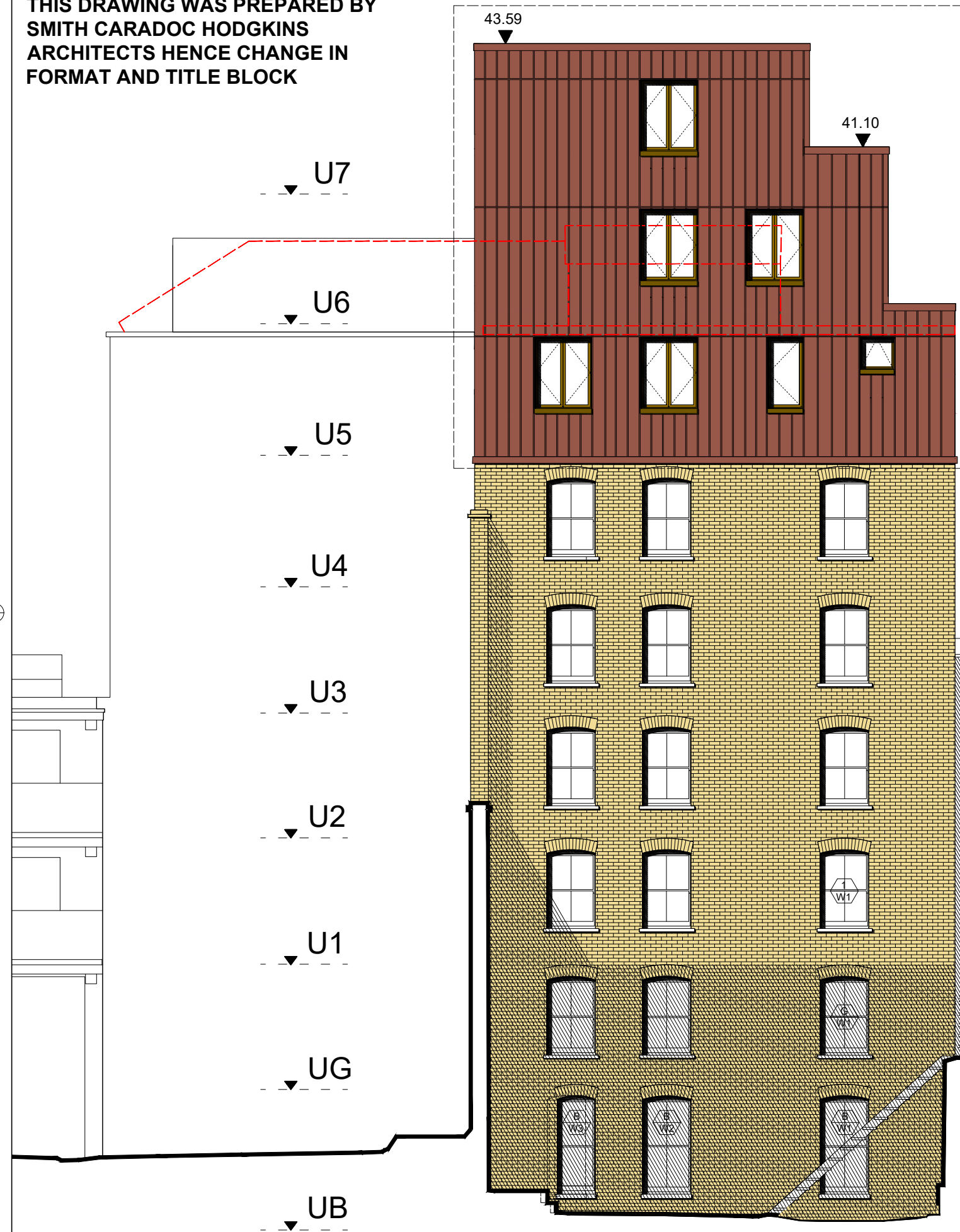


NOTE: THE PREVIOUS REVISION OF THIS DRAWING WAS PREPARED BY SMITH CARADOC HODGKINS ARCHITECTS HENCE CHANGE IN FORMAT AND TITLE BLOCK



KEY

--- EXISTING BUILDING

SCALE 1:100 @A3



NOTE

EXISTING BRICKWORK TO BE REPAIRED AND REPOINTED WITH LIME MORTAR.

SCHEDULE OF CHANGES

ITEM 1
WINDOW NUMBER 1/W1
"AS APPROVED" DRAWING SHOW UPVC SASH TYPE WINDOW.
"AS PROPOSED" DRAWING SHOW TRADITIONAL TIMBER SASH WINDOWS WITH HISTORICALLY CORRECT GLAZING BARS ALL AS PER DETAILS SUBMITTED TO DISCHARGE CONDITION 4a OF 2016/6366/P

ITEM 2
WINDOW NUMBER G/W1
"AS APPROVED" DRAWING SHOW SASH WINDOW WITH GLAZING BAR MISSING TO UPPER SASH
"AS PROPOSED" DRAWING SHOW TRADITIONAL TIMBER SASH WINDOWS WITH HISTORICALLY CORRECT GLAZING BARS ALL AS PER DETAILS SUBMITTED TO DISCHARGE CONDITION 4a OF 2016/6366/P

ITEMS 3&4
WINDOW NUMBERS B/W1 & B/W2
"AS APPROVED" DRAWING SHOW SASH WINDOW WITH GLAZING BAR MISSING TO BOTH UPPER AND LOWER SASHES
"AS PROPOSED" DRAWING SHOW TRADITIONAL TIMBER SASH WINDOWS WITH HISTORICALLY CORRECT GLAZING BARS ALL AS PER DETAILS SUBMITTED TO DISCHARGE CONDITION 4a OF 2016/6366/P

ITEM 5
WINDOW NUMBER B/W3
"AS APPROVED" DRAWING SHOWS THIS SASH WINDOW IN POSITION SHOWN BY DASHED OUTLINE.
"AS PROPOSED" DRAWING SHOW SASH WINDOW IN "AS BUILT" POSITION.

THIS ELEMENT SUBJECT TO SEPARATE S73 MINOR MATERIAL AMENDMENT APPLICATION

SAPPHIRE HOUSE
31A HATTON WALL

PROPOSED EAST ELEVATION

SCALE 1:100 @ A3

1

DRAWING STATUS
PLANNING

NOTES:
DO NOT SCALE FROM THIS DRAWING.
ALL DIMENSIONS ARE TO BE VERIFIED ON SITE BY THE CONTRACTOR.
ANY DISCREPANCY FOUND BETWEEN THIS DRAWING AND ANY OTHER DOCUMENTS MUST BE REPORTED IMMEDIATELY TO THE CONTRACT ADMINISTRATOR.
REMOVE THIS DRAWING FROM CURRENCY WHEN A REVISED DRAWING IS ISSUED.
COPYRIGHT OF THIS DRAWING REMAINS WITH HODGES ARCHITECTS.
THIS DRAWING IS TO BE READ IN CONJUNCTION WITH THE EMPLOYER'S AND CONSULTANT'S PROJECT DOCUMENTS.

A3

E 12.08.22 WINDOW AMENDMENTS AS LISTED WITHIN SCHEDULE INCLUDED ON THIS DRAWING



T: 07932 376 008
E: MAIL@HODGESARCHITECTS.CO.UK
W: WWW.HODGESARCHITECTS.CO.UK

CLIENT
HATTON GARDEN
PROPERTIES LTD

PROJECT
72-80+82 LEATHER LANE
LONDON, EC1N 7TR

SCALE 1:100@A3 DATE 11/05/22

DRAWN NH CHKD SH

DRAWING TITLE
PROPOSED REAR
ELEVATION - EAST

PROJECT NO. 011 DRAWING NO. A118 REV. E