



WOLFF ARCHITECTS

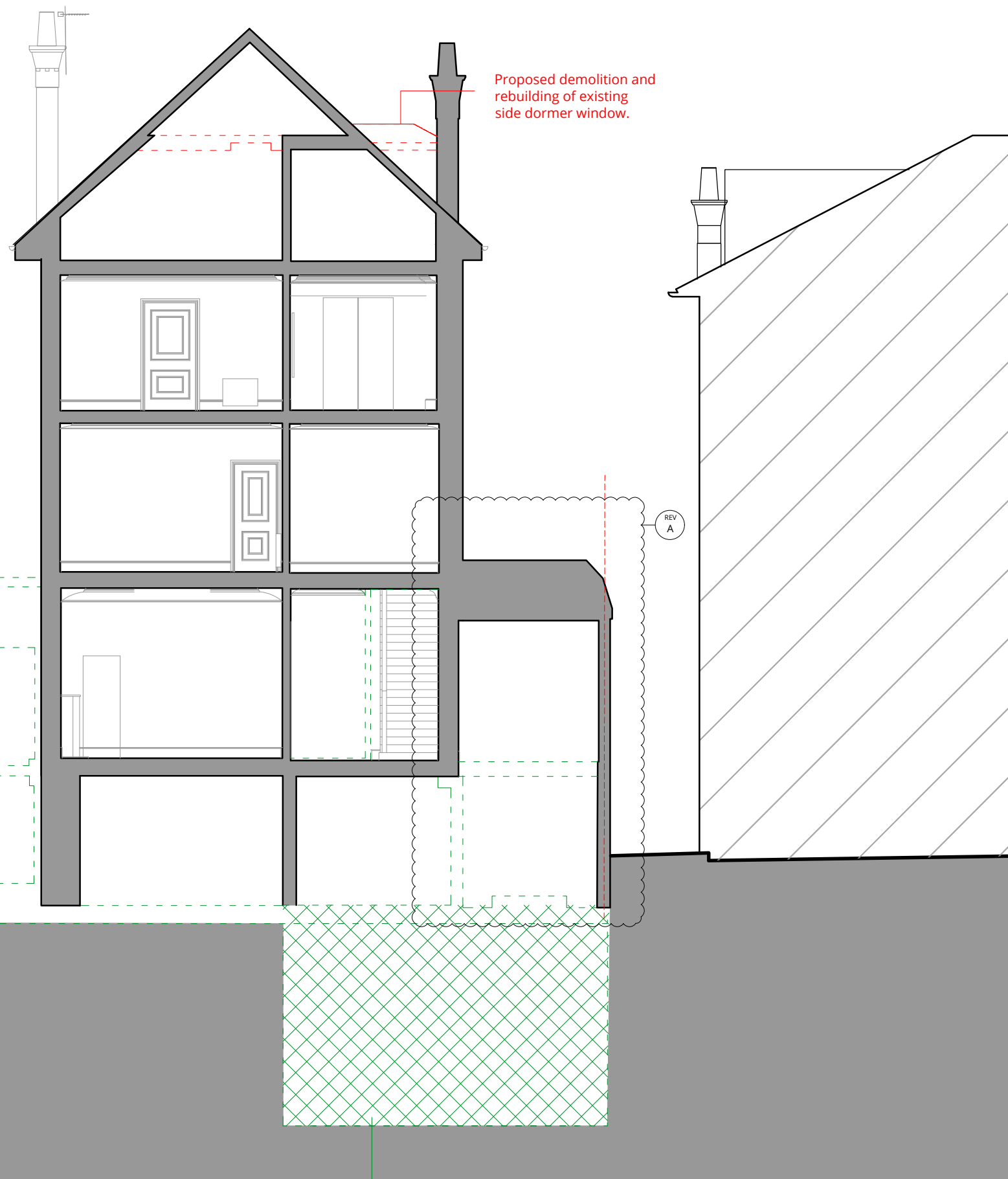
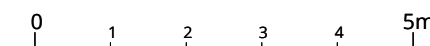
London 16 Lambton Place Notting Hill
London W11 2SH
T +44 (0)20 7229 3125

Oxford Chandos Yard 83 Bicester Road
Long Crendon HP18 9EE
T +44 (0)1844 203310

W www.wolffarchitects.co.uk
E info@wolffarchitects.co.uk

This drawing is protected under Copyright and at no time should any portion be reproduced or copied without the permission of the Architect (Design Copyright Act 1968). It must not be used for purposes other than that for which it is provided. It is supplied without liability for any errors or omissions. All dimensions to be checked on site.

KEY	
	existing
	new demolition
	Previously approved demolition with full planning permission ref: 2019/0149/P



Removal of existing southwest side extensions as per previously approved planning application ref: 2019/0149/P

Reduced lower ground floor level as per previously approved planning application ref: 2019/0149/P

extent of approved basement development reduced

DEMOLITION SECTION D - D

A	Existing flank party wall retained	21.07.22
0	First issue.	28.03.22
Rev.	Description	Date

Project Title
42 Elsworthy Road
London NW3 3DL

Drawing Title
**Demolition
Section DD**

Status
PLANNING

Drawn by	Checked by	Scale
AW	NP	1:100 @ A3

Project No.	Work Stage	Dwg. No.	Rev.
2164	PL	136	A