

**Accessible Homes**

- M4(2)
- M4(3)(2)(a)
- M4(3)(2)(b)
- Commercial Areas

**DRAWING SERIES**

- Series 00 - Accommodation Schedules
- Series 00 - NBS Specification
- Series 02 - Conveyance Plans
- Series 03 - GA Plans, GA Setting out Plans & Marketing Plans
- Series 04 - GA Sections
- Series 05 - GA Elevations
- Series 07 - Bay Studies
- Series 09 - 3D Views
- Series 10 - Substructure
- Series 20 - Superstructure
- Series 21 - External Wall Types & Details
- Series 22 - Internal Wall Types & Details
- Series 23 - Floor Types & Details
- Series 24 - Staircases & Lifts
- Series 27 - Roof Types & Details
- Series 31 - Window & Doors Types, Details & Schedules
- Series 35 - Reflected Ceiling Plans
- Series 36 - Balconies & External Metalwork
- Series 40 - Internal Finishes
- Series 60 - Electrical Plans
- Series 67 - Fire Strategy Plans
- Series 70 - Flat Type Layouts
- Series 71 - Storage Plans
- Series 73 - Kitchen Layouts & Schedules
- Series 74 - Bathroom Layouts & Schedules
- Series 82 - Commercial Units
- Series 83 - Offices

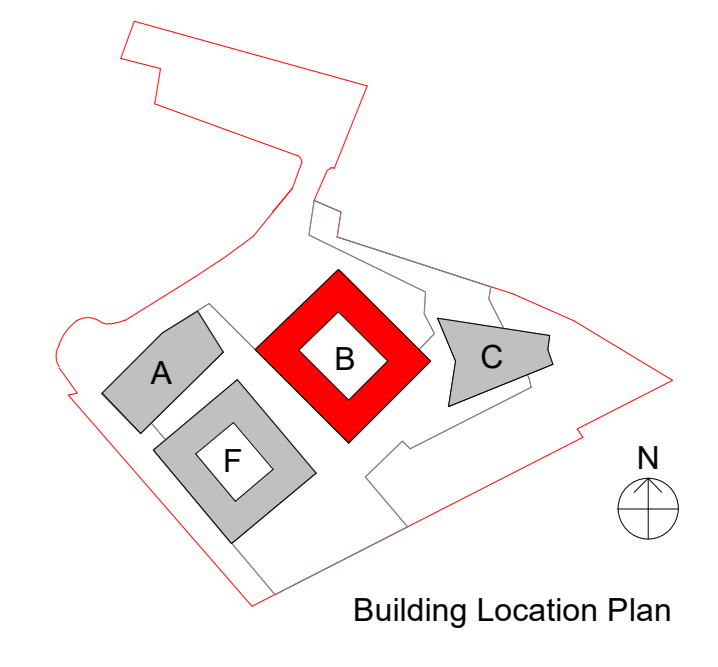
**GENERAL NOTES**

**SETTING OUT - DO NOT SCALE** from this drawing, use figured dimensions ONLY. If in doubt, ASK! Dimensions are shown to structural face generally, or to finished face of ducts and lining. All dimensions are shown in millimeters unless otherwise indicated. Angular dimensions are shown in decimal degrees to the nearest whole degree. Where items are to be fabricated off-site, site dimensions are to be used and confirmed prior to ordering or manufacturing.

**STRUCTURAL** - For design, detailing and setting out of structural elements refer to Structural Engineers drawings.

**SERVICES** - For design, detailing and setting out of services, including SVPs, Gas, Water, Electricals & Telecoms etc refer to M&E Engineers and Structural Engineers drawings.

**FIRE CONSULTANT** - Peter Taylor Associates Ltd (PTAL), through specific endorsement and exclusion to its current Professional Indemnity Insurance (PII) policy, are no longer able to advise on compliance with, or lead the design and specification of, elements, in relation to Approved Document B (Fire Safety) Volumes 1 and 2. Where such elements are indicated in drawings and specifications, the appropriate design information will have been prepared, documented and issued to PTAL by a suitably qualified Specialist Consultant (Fire Consultant).  
All information on this drawing must be read in conjunction with relevant series and specifications.



rev	description	drawn	checked	date
P1	Initial Issue	DBN	CJ	21.01.22

status: **STAGE 4**

reason for issue:  
**ISSUED FOR FINALISING THE PROCUREMENT PROCESS AND NOT FOR CONSTRUCTING THE FRAME**

This drawing is protected under the Copyright, Designs and Patents Act 1988. Do not scale. Figured dimensions only are to be taken from this drawing. All dimensions are to be checked on site before any work is put in hand. If in doubt, ASK.

**P T A L**  
 | Architects | Masterplanners | Designers |

Peter Taylor Associates Limited  
 Kilnara House, 25-26 Poland Street  
 Soho, London W1F 1BN  
 T: +44 (0)20 7495 3837  
 W: www.ptal.co.uk



project:	Camden Goods Yard Phase 2A
title:	BUILDING B LEVEL 07 GA COLOURED PLAN
scale:	1 : 100 @ A0
date:	01/13/22
drawn:	DBN
checked:	CJ
file name:	
project no:	CGYB0 - PTA - ZZZ - 07 - DR - AR - 84038
originator:	
zone:	
level:	
type:	
role:	
diag number:	
revision:	P1

