



**General Notes**

This drawing is copyright of KSR architects. This drawing must be read in conjunction with the Designer's Risk Assessment, specification and all other relevant documentation and drawings.

KSR architects accept no liability for any expense, loss or damage of whatever nature and however arising from any variation made to this drawing or in the execution of the work to which it relates which has not been referred to them and their approval obtained.

Areas are based on unchecked survey and are approximate only. Do not scale from this drawing or the digital data, only figured dimensions are to be used. Refer to linear scale for guidance.

Check all dimensions on site prior to carrying out any works and advise any discrepancy

PLANNING APPLICATION

* Issued for Planning		25.04.2022	RM
Rev	Description	Date	By
Status:			

**KSR** ARCHITECTS &  
INTERIOR DESIGNERS

KSR Architects LLP    info@ksrarchitects.com  
14 Greenleaf Street    t: +44 (0)20 7088 3000  
London NW1 0ND    www.ksrarchitects.com

Project:

**36-38 PARKHILL ROAD**

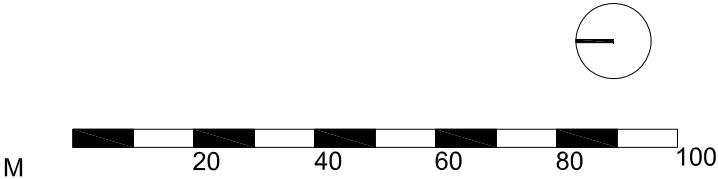
Drawing Title:

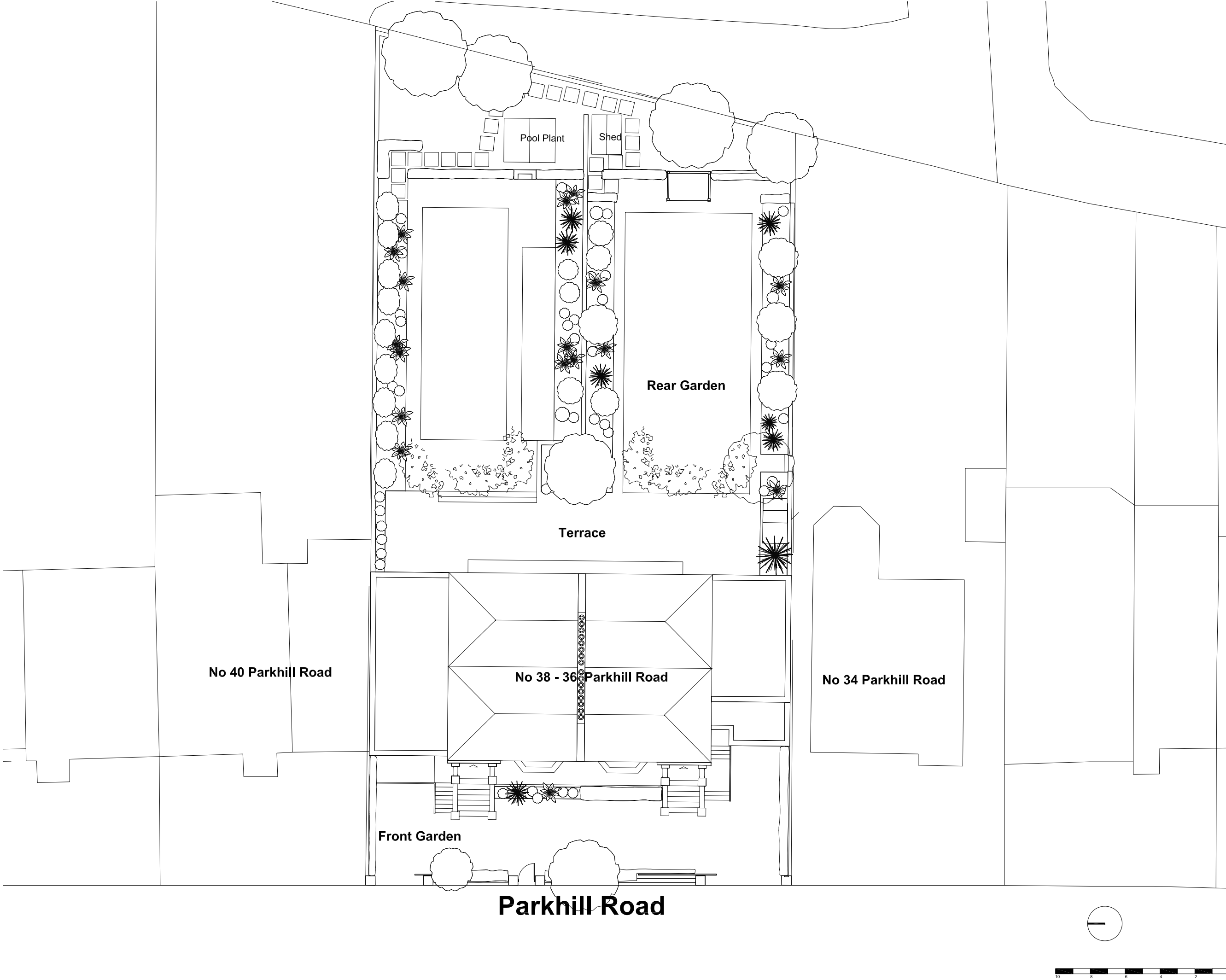
**Location Plan**

Date of first issue:      Scale:  
25.04.2022      1:1250@A3

Drawn By:      Checked By:  
RM      © KSR Architects

Drawing No:      Rev:  
**21043-X-001**      \*





**General Notes**

This drawing is copyright of KSR architects. This drawing must be read in conjunction with the Designer's Risk Assessment, specification and all other relevant documentation and drawings.

KSR architects accept no liability for any expense, loss or damage of whatsoever nature and however arising from any variation made to this drawing or in the execution of the work to which it relates which has not been referred to them and their approval obtained.

Areas are based on unchecked survey and are approximate only. Do not scale from this drawing or the digital data, only figured dimensions are to be used. Refer to linear scale for guidance.

Check all dimensions on site prior to carrying out any works and advise any discrepancy

**PLANNING APPLICATION**

Rev	Description	Date	By
1	Issued for Planning	25.04.2022	RM

Status:

**KSR** ARCHITECTS &  
INTERIOR DESIGNERS

KSR Architects LLP  
14 Greenleaf Street,  
London NW1 0ND

info@ksrarchitects.com  
t: +44 (0)20 7888 3000  
www.ksrarchitects.com

Project:

**36-38 PARKHILL ROAD**

Drawing Title:

**Site Plan**

Date of first issue: 24.04.2022  
Scale: 1:200@A3

Drawn By:

Checked By:

RM

© KSR Architects

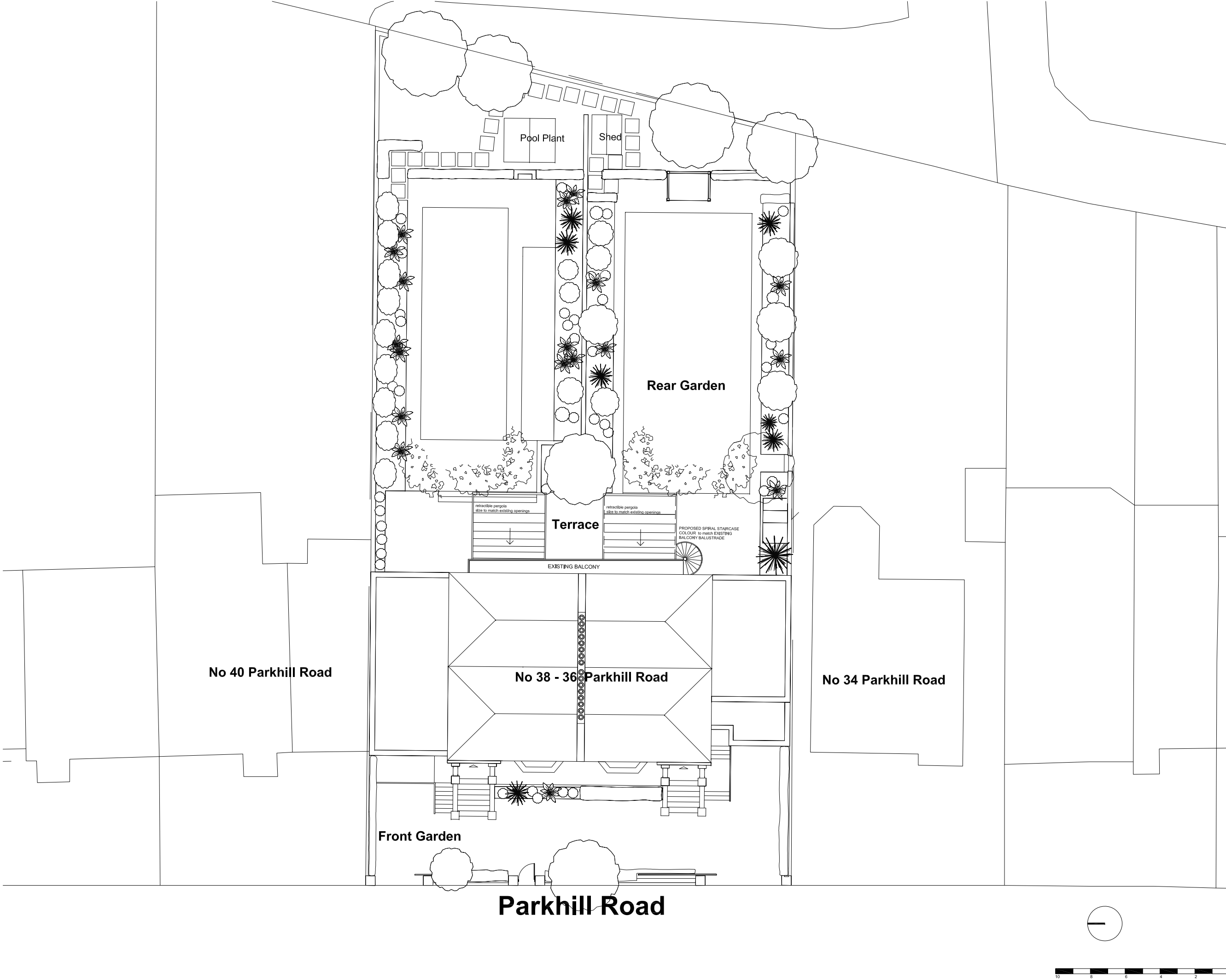
Drawing No:

**21043-X-010**

Rev:

\*





**General Notes**

This drawing is copyright of KSR architects. This drawing must be read in conjunction with the Designer's Risk Assessment, specification and all other relevant documentation and drawings.

KSR architects accept no liability for any expense, loss or damage of whatsoever nature and however arising from any variation made to this drawing or in the execution of the work to which it relates which has not been referred to them and their approval obtained.

Areas are based on unchecked survey and are approximate only. Do not scale from this drawing or the digital data, only figured dimensions are to be used. Refer to linear scale for guidance.

Check all dimensions on site prior to carrying out any works and advise any discrepancy

PLANNING APPLICATION

A	External stair, glazing revised	15.08.2022	RM
*	Issued for Planning	23.08.2022	RM
Rev	Description	Date	By

Status:

**KSR ARCHITECTS & INTERIOR DESIGNERS**

KSR Architects LLP    info@ksrarchitects.com  
14 Greenleaf Street    t: +44 (0)20 7088 3000  
London NW1 0ND    www.ksrarchitects.com

Project:

36-38 PARKHILL ROAD

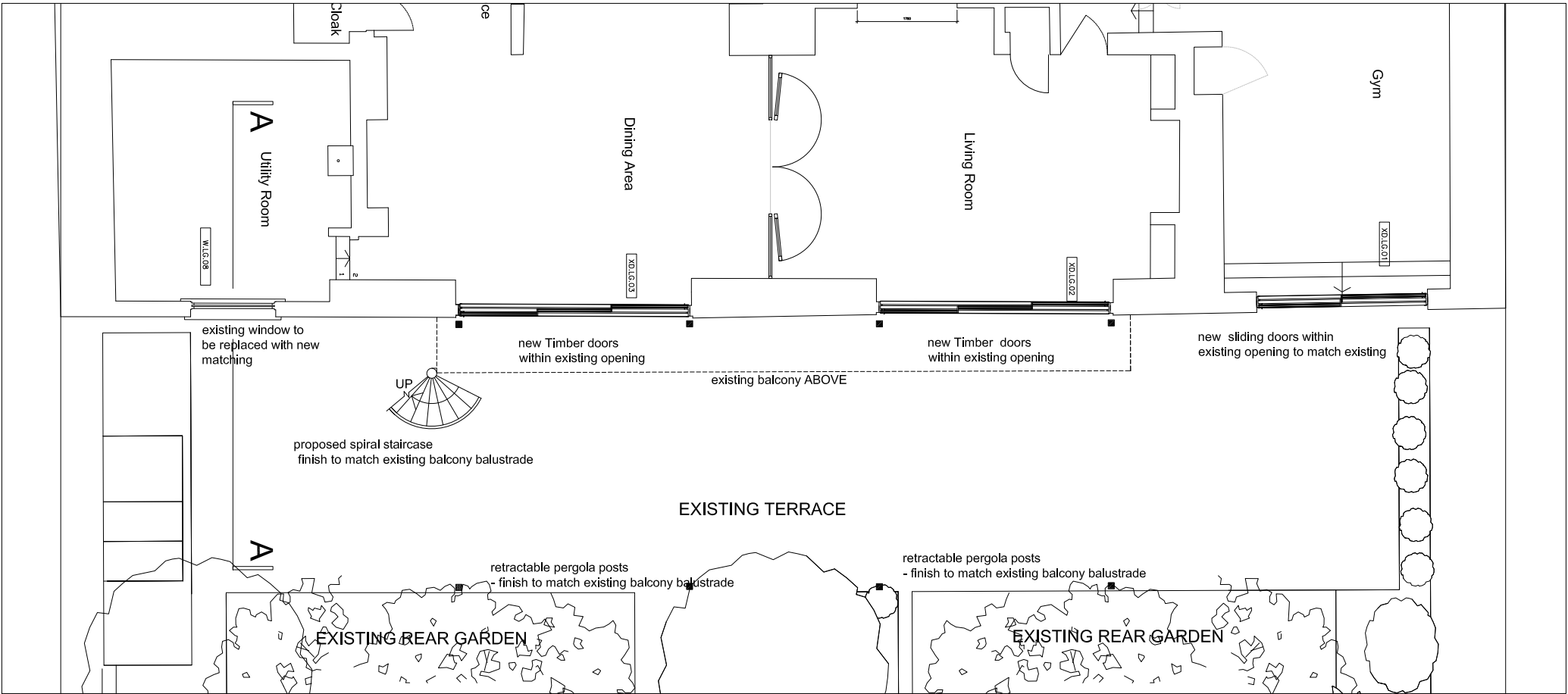
Drawing Title:

Site Plan As Proposed

Date of first issue:    Scale:  
24.04.2022    1:200@A3

Drawn By:    Checked By:    © KSR Architects  
RM

Drawing No:    Rev:  
21043-P-010    A



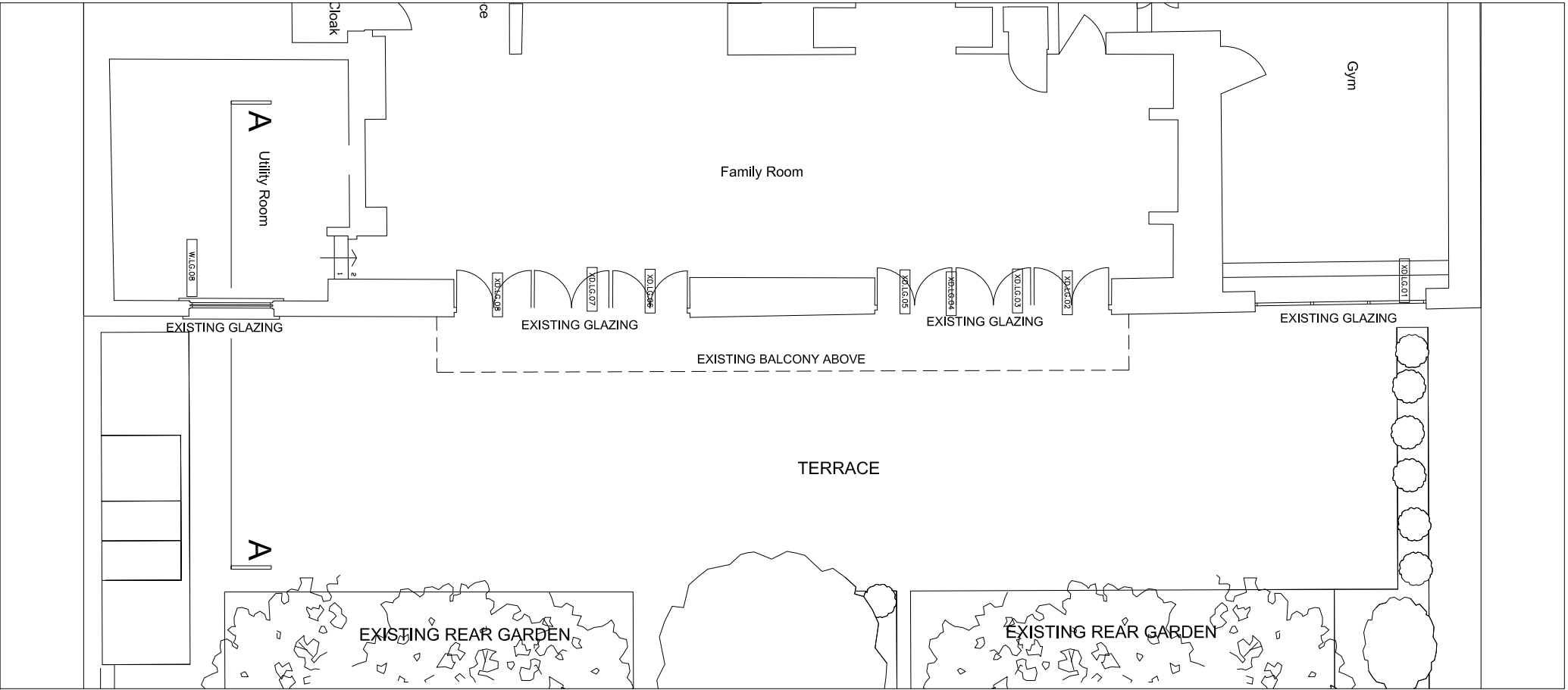
**General Notes**

This drawing is copyright of KSR architects. This drawing must be read in conjunction with the Designer's Risk Assessment, specification and all other relevant documentation and drawings.

KSR architects accept no liability for any expense, loss or damage of whatsoever nature and however arising from any variation made to this drawing or in the execution of the work to which it relates which has not been referred to them and their approval obtained.

Areas are based on uncheckered survey and are approximate only. Do not scale from this drawing or the digital data, only figured dimensions are to be used. Refer to linear scale for guidance.

Check all dimensions on site prior to carrying out any works and advise any discrepancy.



# PLANNING APPLICATION

A	Staircase amended	15.08.2022	RM
-	Revised for Planning	25.04.2022	RM

Rev Description Date By

Status:

**KSR ARCHITECTS & INTERIOR DESIGNERS**

KSR Architects LLP info@ksrarchitects.com  
14 Greenford Street London W9 1DQ t: +44 (0)20 7892 5000 www.ksrarchitects.com

Project:

**36-38 PARKHILL ROAD**

Drawing Title:

Lower Ground Floor Plan As Existing & As Proposed

Date of first issue: 25.04.2022 Scale: 1:100 @A3

Drawn By: RM Checked By: © KSR Architects

Drawing No: 21043-P-090 Rev: A



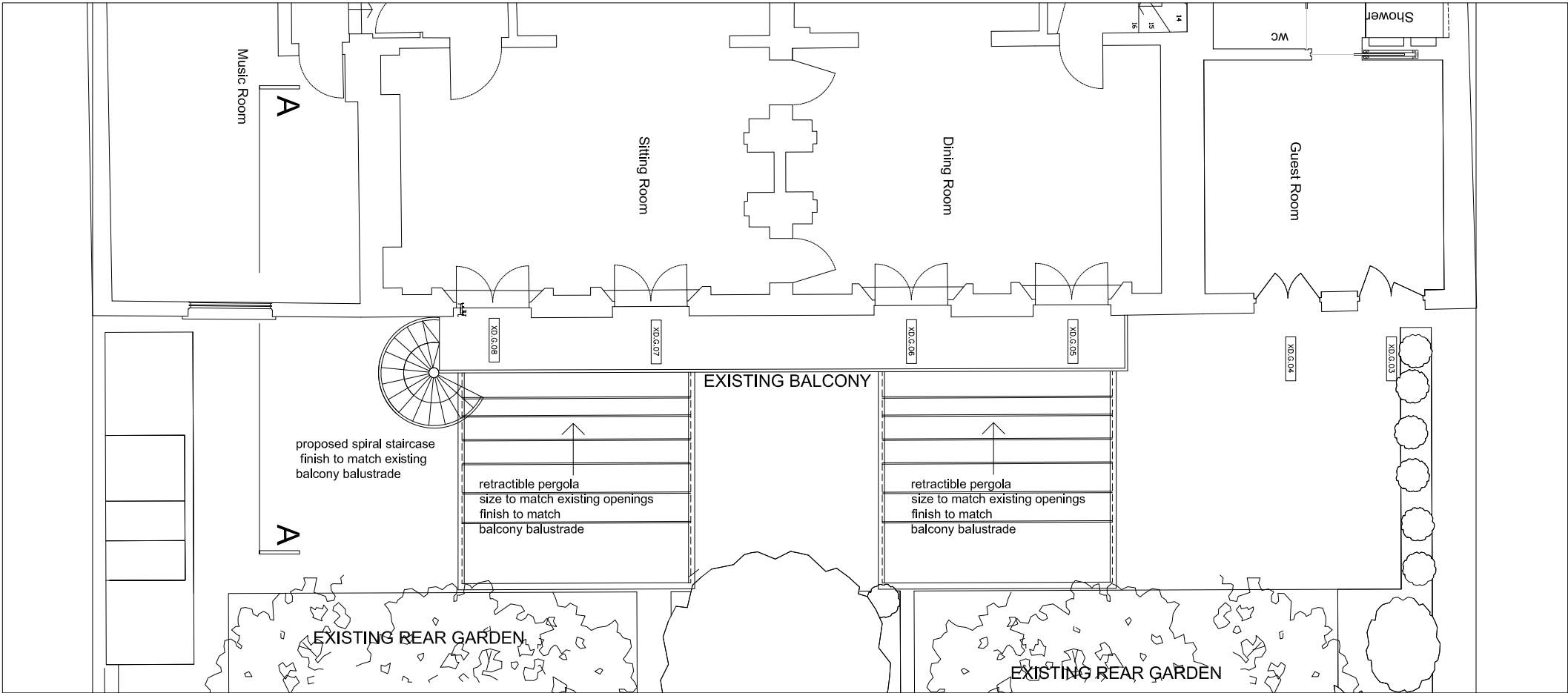
**General Notes**

This drawing is copyright of KSR architects. This drawing must be read in conjunction with the Designer's Risk Assessment, specification and all other relevant documentation and drawings.

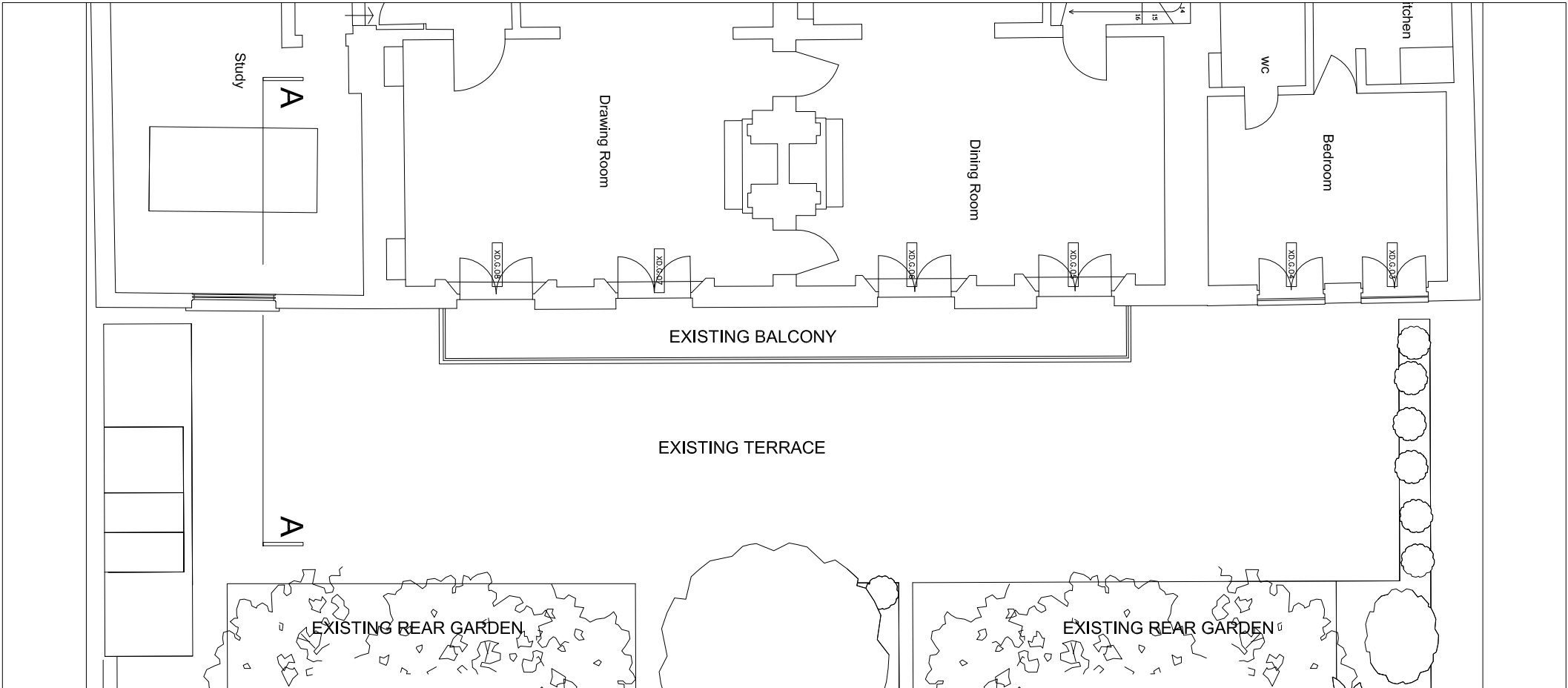
KSR architects accept no liability for any expense, loss or damage of whatsoever nature and however arising from any variation made to this drawing or in the execution of the work to which it relates which has not been referred to them and their approval obtained.

Areas are based on uncheckered survey and are approximate only. Do not scale from this drawing or the digital plan, only floor dimensions are to be used. Refer to linear scale for guidance.

Check all dimensions on site prior to carrying out any works and advise any discrepancy



36-38 PARKHILL ROAD - GROUND FLOOR PLAN AS PROPOSED SCALE 1: 100 @ A3



36-38 PARKHILL ROAD - GROUND FLOOR PLAN AS EXISTING SCALE 1: 100 @ A3

PLANNING APPLICATION

A	Staircase amended	15.08.2022	RM
*	Issued for Planning	25.04.2022	GAJ
Rev	Description	Date	By

Status:

**KSR** ARCHITECTS &  
INTERIOR DESIGNERS

KSR Architects LLP  
14 Greenland Street  
London W9 0ND

email@ksrarchitects.com  
t: +44 (0)20 7650 5000  
www.ksrarchitects.com

Project:

36-38 PARKHILL ROAD

Drawing Title:

Lower Ground Floor Plan As Existing & As  
Proposed

Date of first issue: 25.04.2022  
Scale: 1:100 @A3

Drawn By: GAJ  
Checked By: RM  
© KSR Architects

Drawing No: 21043-P-100  
Rev: A



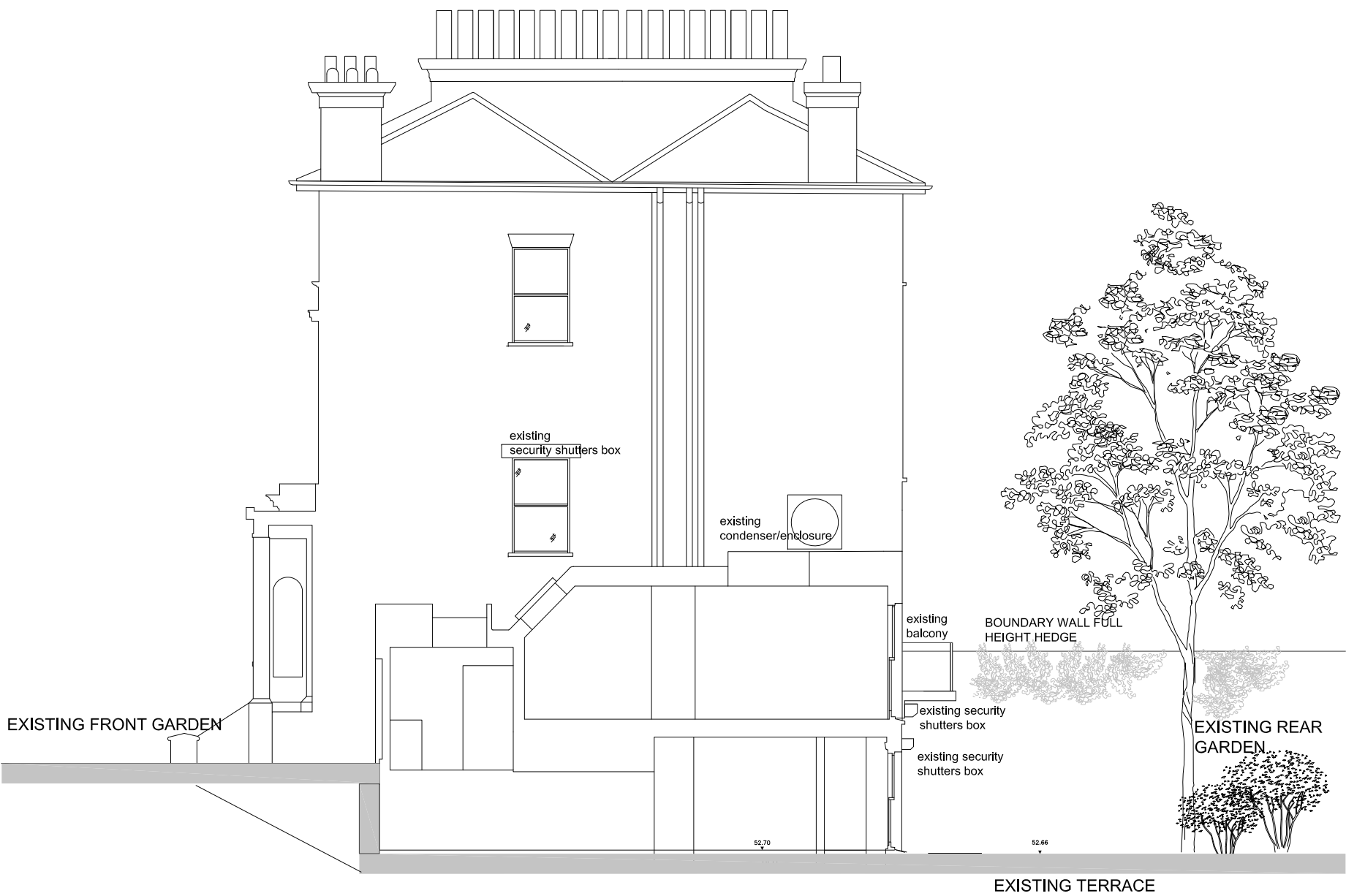
General Notes

This drawing is copyright of KSR architects. This drawing must be read in conjunction with the Designer's Risk Assessment, specification and all other relevant documentation and drawings.

KSR architects accept no liability for any expense, loss or damage of whatsoever nature and however arising from any variation made to this drawing or in the execution of the work to which it relates which has not been referred to them and their approval obtained.

Areas are based on un-checked survey and are approximate only. Do not scale from this drawing or the digital data, only figured dimensions are to be used. Refer to linear scale for guidance.

Check all dimensions on site prior to carrying out any works and advise any discrepancy.



36-38 PARKHILL ROAD -SECTION A-A AS EXISTING SCALE 1: 100 @ A3

PLANNING APPLICATION

Rev.	Description	Date	By
1	Issued for Planning	22.4.2022	RM

**KSR** ARCHITECTS & INTERIOR DESIGNERS

KSR Architects LLP | info@ksrarchitects.com  
14 Greenland Street | t: +44 (0)20 7692 5000  
London W6H 0HD | www.ksrarchitects.com

Project:

36-38 Parkhill Road

Drawing Title:

Section A-A - As Existing

Date of first issue: 22.04.2022 Scale: 1:100@A3

Drawn By: RM Checked By: © KSR Architects

Drawing No: 21043-EX-P-200 Rev: \*



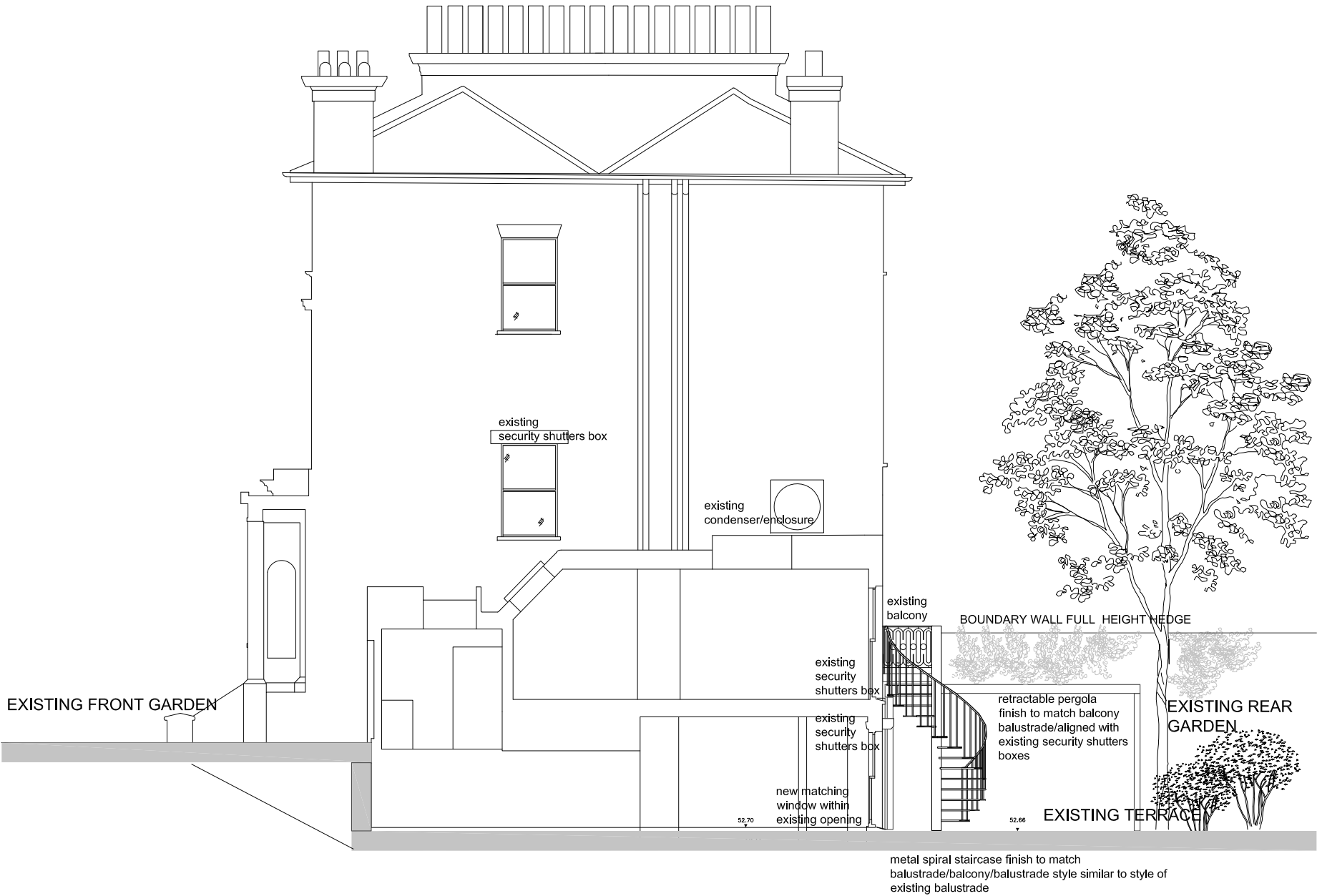
General Notes

This drawing is copyright of KSR architects. This drawing must be read in conjunction with the Designer's Risk Assessment, specification and all other relevant documentation and drawings.

KSR architects accept no liability for any expense, loss or damage of whatsoever nature and however arising from any variation made to this drawing or in the execution of the work to which it relates which has not been referred to them and their approval obtained.

Areas are based on un-checked survey and are approximate only. Do not scale from this drawing or the digital data, only figured dimensions are to be used. Refer to linear scale for guidance.

Check all dimensions on site prior to carrying out any works and advise any discrepancy.



36-38 PARKHILL ROAD -SECTION A-A AS PROPOSED SCALE 1: 100 @ A3

PLANNING APPLICATION

B	Staircase location revised	15.08.2022	RM
A	Condenser omitted	23.06.2022	RM
*	Issued for Planning	22.4.2022	RM
Rev.	Description	Date	By

Status:

**KSR** ARCHITECTS &  
INTERIOR DESIGNERS

KSR Architects LLP  
14 Greenland Street  
London NW1 0ND

info@ksrarchitects.com  
t: +44 (0)20 7692 5000  
www.ksrarchitects.com

Project:

**36-38 Parkhill Road**

Drawing Title:

**Section A-A- As Proposed**

Date of first issue:

22.04.2022

Scale:

1:100@A3

Drawn By:

RM

Checked By:

© KSR Architects

Drawing No:

**21043-P-200**

Rev:

**B**



**General Notes**

This drawing is copyright of KSR architects. This drawing must be read in conjunction with the Designer's Risk Assessment, specification and all other relevant documentation and drawings.

KSR architects accept no liability for any expense, loss or damage of whatsoever nature and however arising from any variation made to this drawing or in the execution of the work to which it relates which has not been referred to them and their approval obtained.

Areas are based on uncheckered survey and are approximate only. Do not scale from this drawing or the digital files, only figure dimensions are to be used. Refer to linear scale for guidance.

Check all dimensions on site prior to carrying out any works and advise any discrepancy



36-38 PARKHILL ROAD - FRONT ELEVATION AS EXISTING SCALE 1: 100 @ A3

PLANNING APPLICATION

* Issued for Planning		25.4.2022	RM
Rev	Description	Date	By

Status:

**KSR** ARCHITECTS &  
INTERIOR DESIGNERS

KSR Architects LLP  
14 Greenland Street  
London W9 1 0ND

info@ksrarchitects.com  
t: +44 (0)20 7692 5000  
www.ksrarchitects.com

Project:

36-38 Parkhill Road

Drawing Title:

Front Elevation As Existing

Date of first issue:	Scale:
20.04.2022	1:100@A3

Drawn By:	Checked By:
	RM

© KSR Architects

Drawing No:	Rev:
21043-EX-P-300	*





General Notes

This drawing is copyright of KSR architects. This drawing must be read in conjunction with the Designer's Risk Assessment, specification and all other relevant documentation and drawings.

KSR architects accept no liability for any expense, loss or damage of whatsoever nature and however arising from any variation made to this drawing or in the execution of the work to which it relates which has not been referred to them and their approval obtained.

Areas are based on uncheckered survey and are approximate only. Do not scale from this drawing or the digital data, only figure dimensions are to be used. Refer to linear scale for guidance.

Check all dimensions on site prior to carrying out any works and advise any discrepancy



36-38 PARKHILL ROAD - FRONT ELEVATION AS PROPOSED SCALE 1: 100 @ A3

PLANNING APPLICATION

A	Condenser omitted	23.6.2022	RM
	Issued for Planning	20.4.2022	RM
Rev	Description	Date	By

Status:

**KSR ARCHITECTS & INTERIOR DESIGNERS**

KSR Architects LLP  
14 Greenland Street  
London W9P 0XD  
t: +44 (0)20 7692 5000  
e: info@ksrarchitects.com  
www.ksrarchitects.com

Project:

**36-38 Parkhill Road**

Drawing Title:

Front Elevation As Proposed

Date of first issue: 20.04.2022 Scale: 1:100@A3

Drawn By: RM Checked By: RM

© KSR Architects

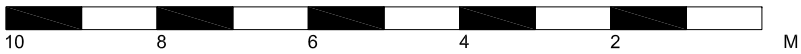
Drawing No: 21043-P-300 Rev: A





**KSR** ARCHITECTS & INTERIOR DESIGNERS  
KSR Architects LLP  
14 Greenland Street  
London NW1 0ND  
mail@ksrarchitects.com  
t: +44 (0)20 7692 5000  
www.ksrarchitects.com

Drawing No:	Rev:
<b>21043-EX-P-301</b>	<b>*</b>



General Notes

This drawing is copyright of KSR architects. This drawing must be read in conjunction with the Designer's Risk Assessment, specification and all other relevant documentation and drawings.

KSR architects accept no liability for any expense, loss or damage of whatsoever nature and however arising from any variation made to this drawing or in the execution of the work to which it relates which has not been referred to them and their approval obtained.

Areas are based on uncheckered survey and are approximate only. Do not scale from this drawing or the digital data, only figure dimensions are to be used. Refer to linear scale for guidance.

Check all dimensions on site prior to carrying out any works and advise any discrepancy



36-38 PARKHILL ROAD - REAR ELEVATION AS PROPOSED SCALE 1: 100 @ A3

PLANNING APPLICATION

B	External Staircase relocated	15.08.2022	RM
A	Condenser omitted	23.06.2022	RM
T	Issued for Planning	25.04.2022	RM
Rev	Description	Date	By

Status:

**KSR** ARCHITECTS & INTERIOR DESIGNERS

KSR Architects LLP  
14 Greenland Street  
London W9P 0XD

info@ksrarchitects.com  
t: +44 (0)20 7692 5000  
www.ksrarchitects.com

Project:

**36-38 Parkhill Road**

Drawing Title:

Rear Elevation As Proposed

Date of first issue: 20.04.2022  
Scale: 1:100@A3

Drawn By: RM  
Checked By: RM

© KSR Architects

Drawing No: **21043-P-301**  
Rev: **B**