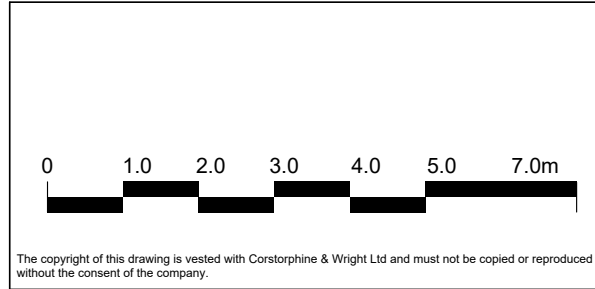
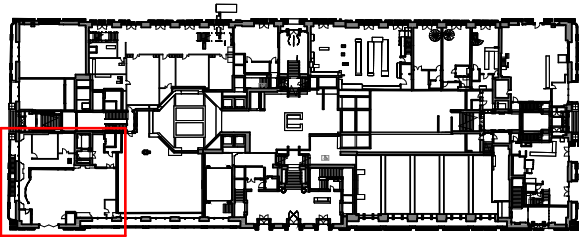


1 Proposed Loading Bay - Plan
1 : 100



P-00 FOR PLANNING		01/07/2022	RS	ATJ
Rev.	Description	Date	Drw.	Chk.

Client
Oxford Victoria House Ltd.

Project
21593 - Victoria House

Drawing Title
Loading Bay Plan

Drawing Status
PLANNING

Corstorphine & Wright

London Studio
One Mortimer Street, London, W1T 3JA
020 7842 0820
corstorphine-wright.com

Drawing No. 21593-CWA-VH-08-A-0388		Revision P-00	
Drawn TJ	Checked RS	Paper Size A3	Scale As indicated
Date 01/07/2022			