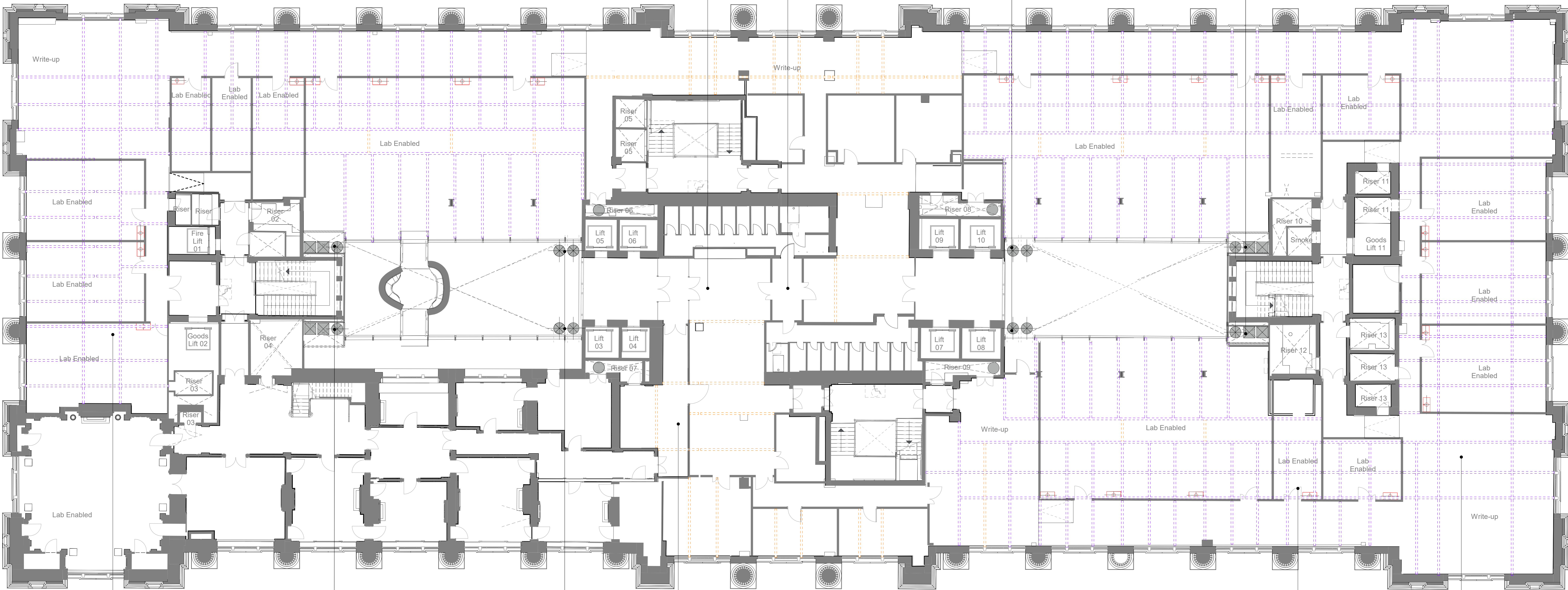


Alterations to central core
adjusting fixed furniture and
joinery to form unit entrances.
Refer to drawings 21593-0391
for typical detail.

Alterations to central core
adjusting fixed furniture and
joinery to form unit entrances.
Refer to drawings 21593-0391
for typical detail. Refurbish toilet
blocks to match others recently
refurbished.

Proposed Atrium ductwork
concealed with plasterboard
enclosure. Glazing removed and
small area of slab installed as part of
2002 works removed.

Proposed exposed ductwork
double skin decorative ducts
serving ceiling services voids
on levels 1 - 7. Atrium glazing to
be removed in local surrounding
ducts and replaced with glazing
accommodating service penetrations
at high level.



Raised access floor to be retained in
write-up spaces.

Proposed Atrium ductwork
concealed with plasterboard
enclosure. Glazing removed and
small area of slab installed as
part of 2002 works removed.

Proposed exposed ductwork
double skin decorative ducts
serving ceiling services voids
on levels 1 - 7. Atrium glazing to
be removed in local surrounding
ducts and replaced with glazing
accommodating service penetrations
at high level.

Proposed new corridor connecting
central core to heritage suite

Removal of Raised Access
Floors in Lab Enabled Areas

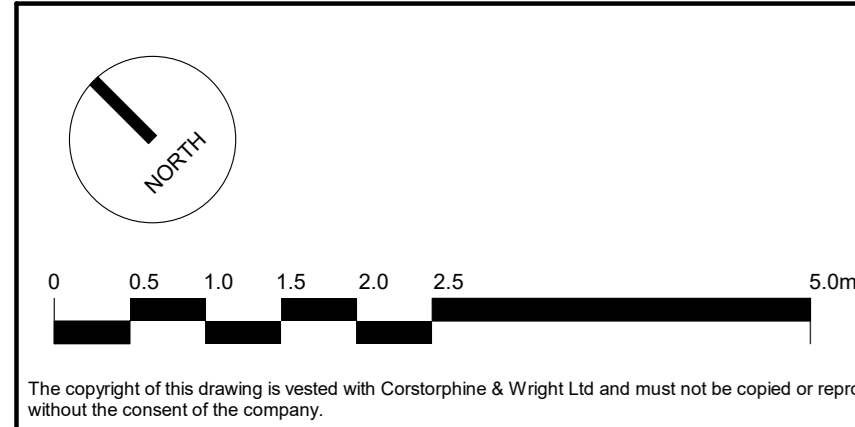
Removal / Retainment of Raised Access
Floors in Write-up spaces dependent on
local condition.

1 Third Floor - Proposed1
1: 100

- Proposed Partition Locations
- Proposed flexible partition locations as consented under LBC 2019/02031
- Proposed additional flexible partition locations
- Drainage Positions - Proposed drainage penetrations in slab
- Ramps - Proposed 'illustrative' location of transition in level from slab to raised access floor. Location dependent on final tenant fit out.

Note

For all items being removed, please refer to demolition drawings 21593-0340 - 0356
Existing services in modernised areas to be altered, refer to services consultant drawings and reports for details.



The copyright of this drawing is vested with Corstorphine & Wright Ltd and must not be copied or reproduced without the consent of the company.

P-00 FOR PLANNING
Rev. Description
01/07/2022 R8 ATJ
Date Dwn. CWC

Client:
Oxford Victoria House Ltd.
Project:
21593 - Victoria House

Drawing Title:
Proposed - Third Floor Plan
Drawing Status:
PLANNING

Corstorphine & Wright
London Studio
One Mortimer Street, London, W1T 3JA
020 7462 0033
corstorphine-wright.com

Drawing No.
21593-CWA-VH-03-DR-A-0329
Drawn: ATJ
Checked: RS
Paper Size: A0
Scale: 1: 100
Revision:
P-00
Date: 01/07/2022