

Proposed exposed ductwork double skin decorative ducts serving ceiling services voids on levels 1 - 7. Atrium glazing to be removed in local surrounding ducts and replaced with glazing accomodating service penetrations at high level.

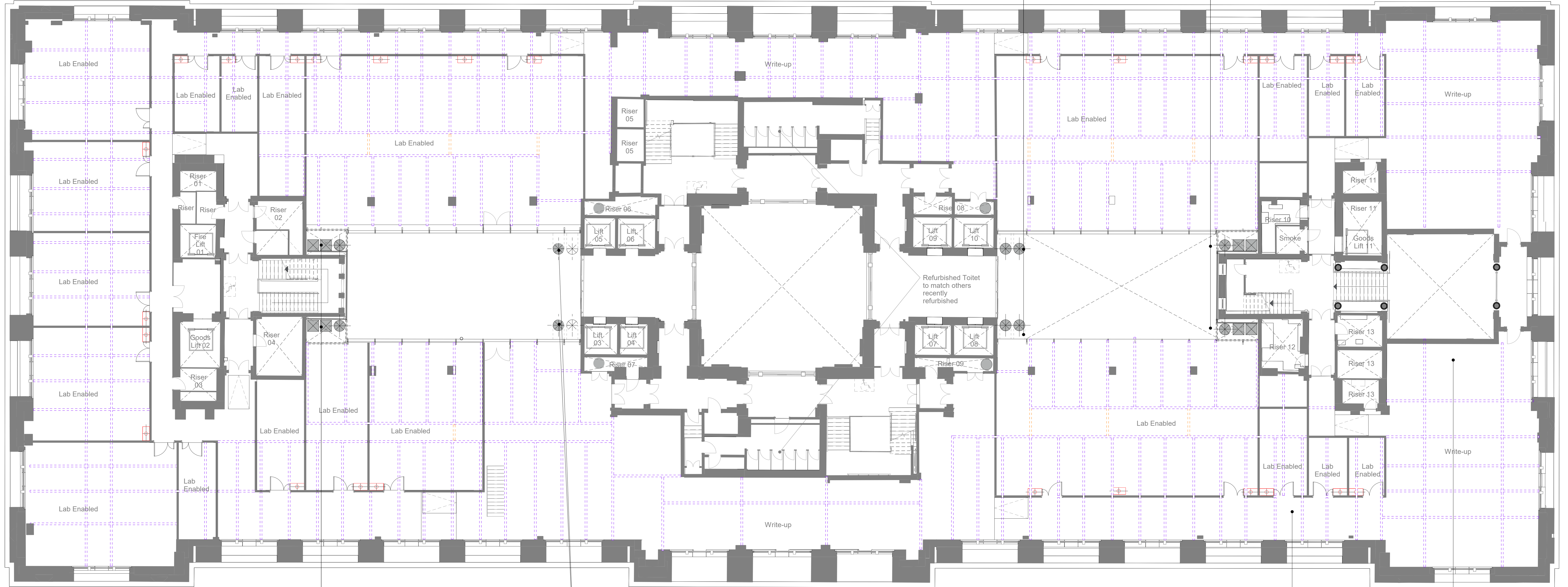
Proposed Atrium ductwork concealed with plasterboard enclosure. Glazing removed and small area of slab installed as part of 2002 works removed.

Proposed Atrium ductwork concealed with plasterboard enclosure. Glazing removed and small area of slab installed as part of 2002 works removed.

Proposed exposed ductwork at high level. double skin decorative ducts serving ceiling services voids on levels 1 - 7. Atrium glazing to be removed in local surrounding ducts and replaced with glazing accomodating service penetrations at high level.

Removal of Raised Access Floors in Lab Enabled Areas

Removal / Retainment of Raised Access Floors in Write-up spaces dependent on local condition.

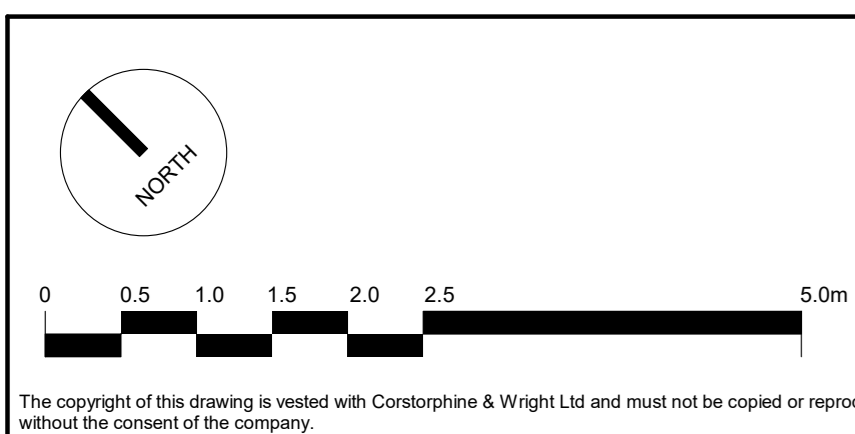


1 First Floor - Proposed

1 : 100

- Proposed Partition Locations
- - - - Proposed flexible partition locations as consented under LBC 2019/02031.
- - - - Proposed additional flexible partition locations
- - - - Drainage Positions - Proposed drainage penetrations in slab
- Ramps - Proposed 'illustrative' location of transition in level from slab to raised access floor. Location dependent on final tenant fit out.

**Note**  
For all items being removed, please refer to demolition drawings 21593-0340 - 0356  
Existing services in modernised areas to be altered, refer to services consultant drawings and reports for details.



The copyright of this drawing is vested with Corstorphine & Wright Ltd and must not be copied or reproduced without the consent of the company.

P-00 FOR PLANNING  
Rev. Description  
01/07/2022 RS ATJ  
Date Drawn/Checked

Client:  
Oxford Victoria House Ltd.

Project:  
21593 - Victoria House

Drawing Title:  
Proposed - First Floor Plan

Drawing Status:  
PLANNING

**Corstorphine & Wright**

London Studio  
One Macmillan Street, London, W1T 3JA  
020 7462 0020

corstorphine-wright.com

Drawing No.  
21593-CWA-VH-01-DR-A-0327

Drawn: ATJ  
Checked: RS  
Paper Size: A0  
Scale: 1 : 100

Date  
01/07/2022

Revision  
P-00