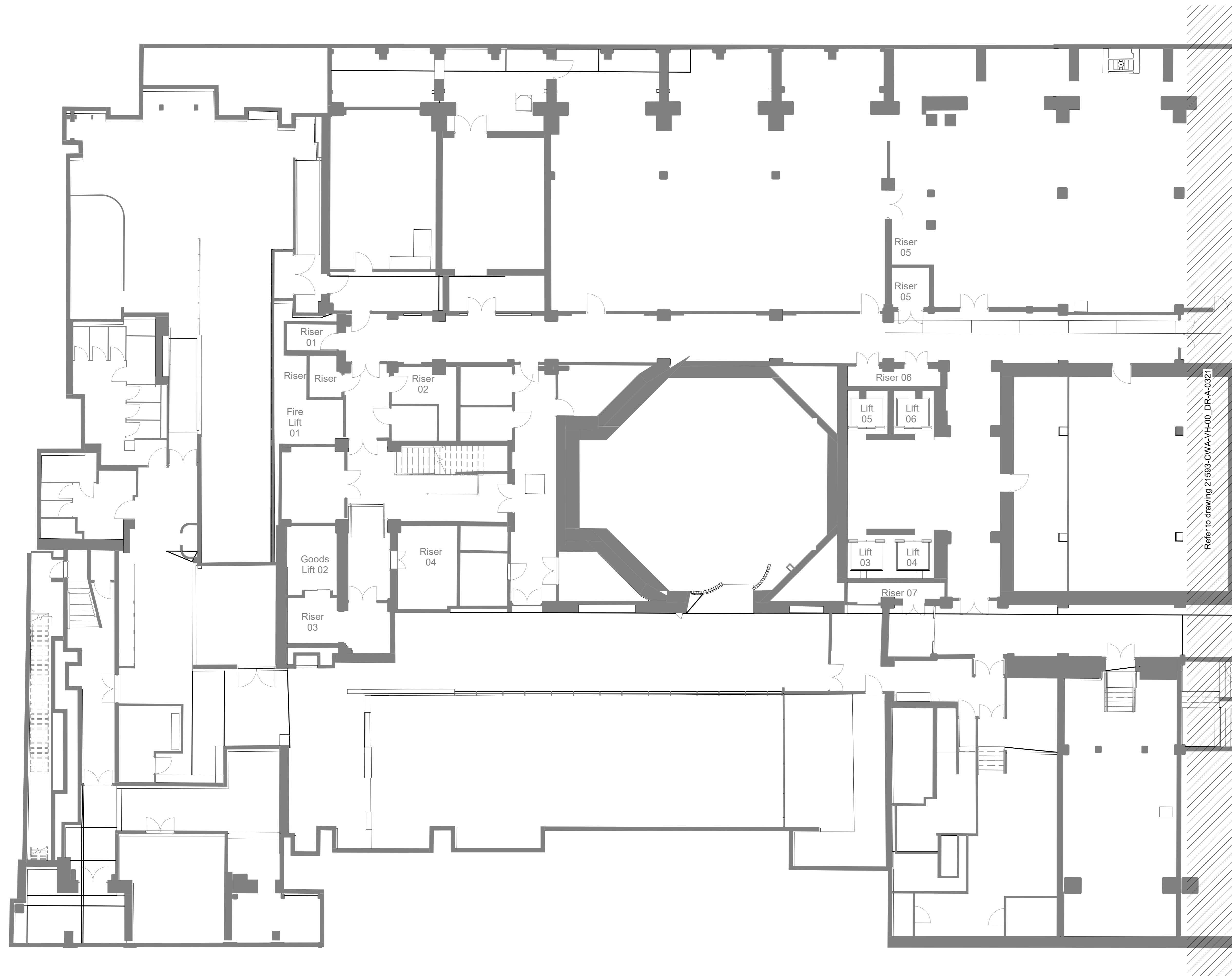


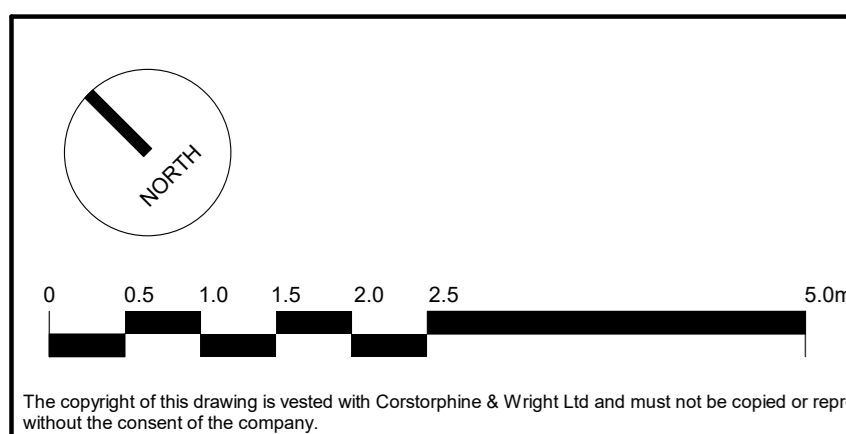
Note: No proposed works at North of Basement Level 2 B2



2 -02 Basement(02) - North
1:100

- Proposed Partition Locations
- Proposed flexible partition locations as consented under LBC 2019/0203/L
- Proposed additional flexible partition locations
- Drainage Positions - Proposed drainage penetrations in slab
- Ramps - Proposed illustrative location of transition in level from slab to raised access floor. Location dependent on final tenant fit out.

Note
For all items being removed, please refer to demolition drawings 21599-0340 - 0356
Existing services in modernised areas to be altered, refer to services consultant drawings and reports for details.



P-00	FOR PLANNING	01/07/2022	RS	ATJ
Rev.	Description	Date	Drawn	Checked

Client: Oxford Victoria House Ltd.		Corstorphine & Wright	
Project: 21593 - Victoria House			
Drawing Title: Proposed - Basement Level 2 (North)		Revision: P-00	
Drawing No: 21593-CWA-VH-00-DR-A-0320		Date: 01/07/2022	
Drawn: ATJ	Checked: RS	Paper Size: A0	Scale: 1:100