

- LEGEND:**
- RISING BUSBAR LOCATION
 - LOCAL DISTRIBUTION BOARD LOCATION
 - TENANT PANEL / DISTRIBUTION BOARD
 - 150mm HEAVY GAUGE TRAY
 - EXISTING DISTRIBUTION TO REMAIN
- HIGH LEVEL CONTAINMENT ROUTE:**
- 200x50mm DATA BASKET
 - 100x50mm POWER TRUNKING
 - 50x50mm FIRE ALARM

| | | | | |
|----------|------------|--|-----|-----|
| S2-P02 | 2007/2022 | BACKGROUND CHANGED & SERVICES UPDATED TO SUIT. | T S | S H |
| S2-P01 | 10/06/2021 | INFORMATION ISSUE | S H | M T |
| SUIT-REV | DATE | DESCRIPTION | DRN | CHK |
| STANDS | | | | |

INFORMATION

THIS DRAWING IS COPYRIGHT © NOT SCALE FROM DRAWING. THE SCALE INDICATED ON THIS SHEET APPLIES TO THE DIMENSIONS AND NOT TO THE WALLS OR STRUCTURES SHOWN UNLESS OTHERWISE STATED.

KJ TAIT ENGINEERS

1 Fitzroy Square
 T +44 (0) 207 388 9852
 F +44 (0) 207 388 9851
 W www.kjtaite.com

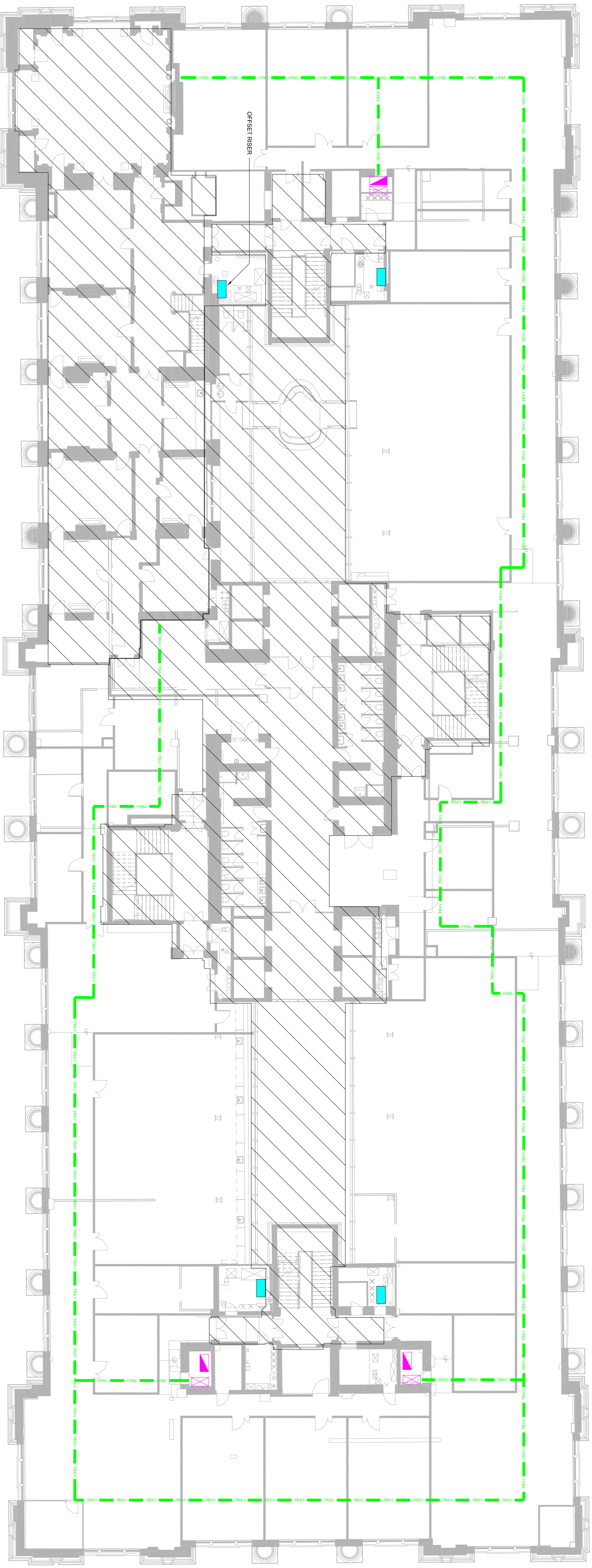
PROJECT INFORMATION

CLIENT OXFORD VICTORIA HOUSE
 DEVELOPER DEVELOPMENT LTD
 PROJECT VICTORIA HOUSE, LONDON, WC1B 4DA

DRAWING INFORMATION

DRAWING TITLE ELECTRICAL SERVICES, DISTRIBUTION & CONTAINMENT STRATEGY
 SECOND FLOOR

| | | | |
|-------------|---------------------------------------|-------------|---------|
| DESIGNED BY | S H | DATE | JUNE 22 |
| DRAWN BY | M Z | KJT JOB NO. | 13221 |
| SCALE | 1:150@A1 | | |
| APP CODE | ORIGINATOR/LEVEL/TYPE/NO CLASS NUMBER | SUIT-REV | S2-P02 |
| 13221 | KJT-22-02-DR-E-6101 | | |



- LEGEND:**
- RISING BUSBAR LOCATION
 - LOCAL DISTRIBUTION BOARD LOCATION
 - TENANT PANEL / DISTRIBUTION BOARD
 - 150mm HEAVY GAUGE TRAY
 - EXISTING DISTRIBUTION TO REMAIN
 - HIGH LEVEL CONTAINMENT ROUTE:
 - 200x50mm DATA BASKET
 - 100x50mm POWER TRUNKING
 - 50x45mm FIRE ALARM

| | | | | |
|----------|------------|--|-----|-----|
| S2-P02 | 20/07/2022 | BACKGROUND CHANGED & SERVICES UPDATED TO SUIT. | T S | S.H |
| S2-P01 | 10/06/2021 | INFORMATION ISSUE | S.H | M.T |
| SUIT-REV | DATE | DESCRIPTION | DRN | CHK |
| STANDS | | | | |

INFORMATION

THIS DRAWING IS COPYRIGHT © 2007 SCALE FROM DRAWING. ALL RIGHTS RESERVED. THIS IS A PRELIMINARY DRAWING. THE CLIENT ACCEPTS RESPONSIBILITY FOR THE ACCURACY OF THE INFORMATION AND DIMENSIONS SHOWN ON THIS DRAWING. THE DRAWING IS VALID FOR 12 MONTHS FROM THE DATE OF ISSUE.

KJ TAIT
ENGINEERS

1 Fenny Street
T +44 (0) 207 289 0952
W www.kjtaite.com

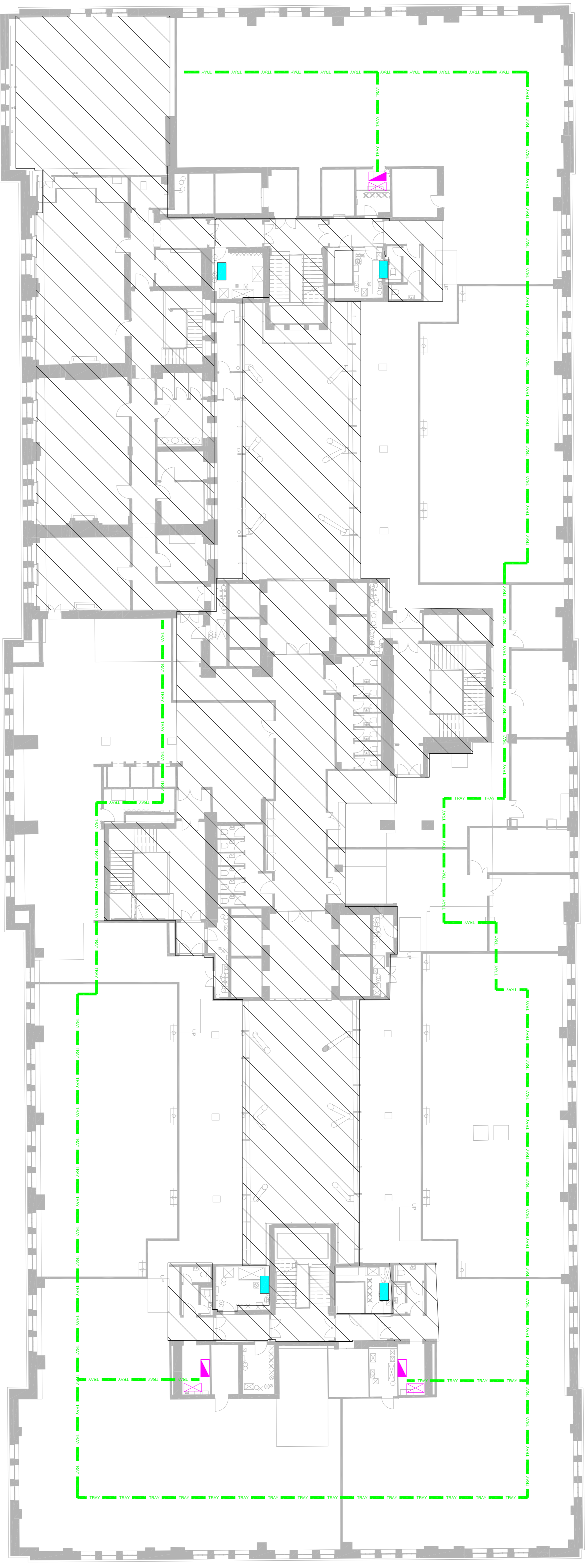
PROJECT INFORMATION

CLIENT OXFORD VICTORIA HOUSE
DEVELOPMENT LTD
PROJECT VICTORIA HOUSE, LONDON, WC1B 4DA

DRAWING INFORMATION

DRAWING TITLE ELECTRICAL SERVICES, DISTRIBUTION & CONTAINMENT STRATEGY
THIRD FLOOR

| | | | |
|-------------|---|-------------|--------|
| DESIGNED BY | S.H | DATE | JUNE22 |
| DRAWN BY | M.Z | KJT JOB NO. | 13221 |
| SCALE | 1:150@A1 | SUIT-REV | S2-P02 |
| APP CODE | ORIGINATOR-ELECTRICAL-ENGINEER-CLASS NUMBER | | |
| 13221 | KJT-22-03-DR-E-6101 | | |



- LEGEND:**
- RISING BUSBAR LOCATION
 - LOCAL DISTRIBUTION BOARD LOCATION
 - TENANT PANEL / DISTRIBUTION BOARD
 - 150mm HEAVY GAUGE TRAY
 - EXISTING DISTRIBUTION TO REMAIN
 - HIGH LEVEL CONTAINMENT ROUTE:
 - 200x50mm DATA BASKET
 - 100x50mm POWER TRUNKING
 - 50x50mm FIRE ALARM

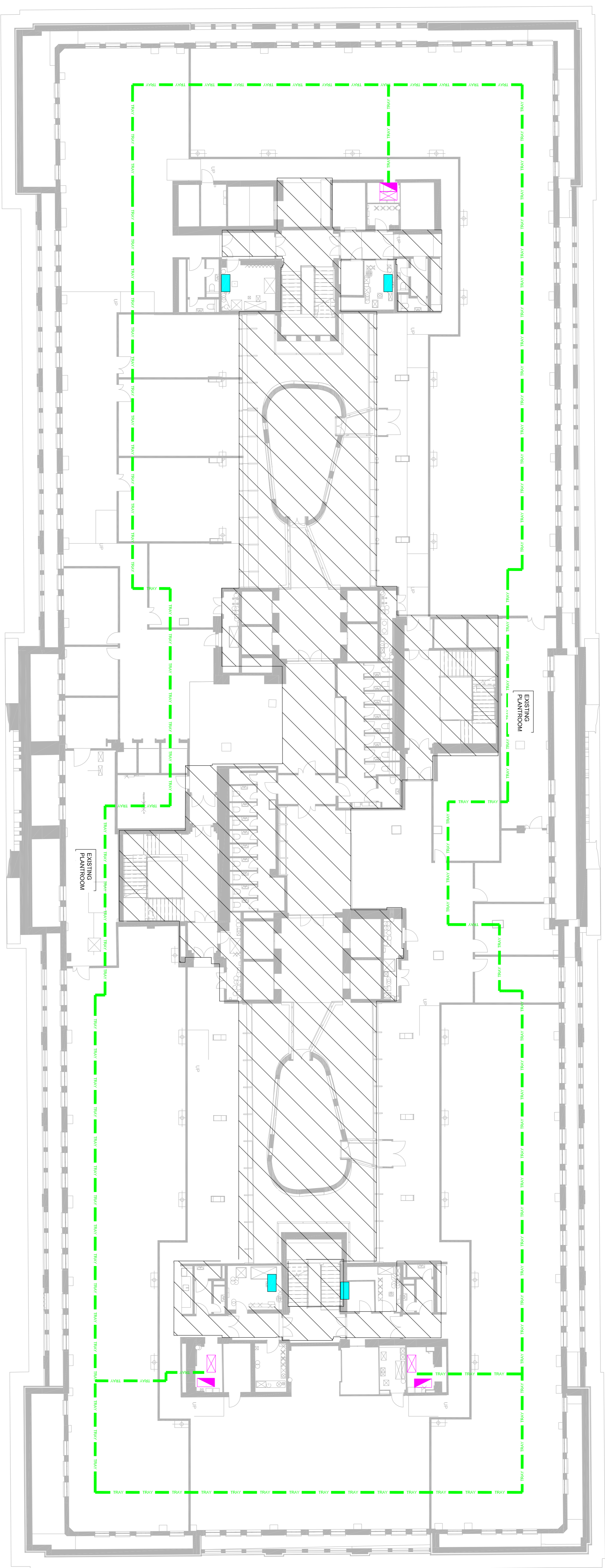
| | | | | |
|----------|------------|--|-----|-----|
| S2-P02 | 2007/2022 | BACKGROUND CHANGED & SERVICES UPDATED TO SUIT. | T S | S H |
| S2-P01 | 10/06/2021 | INFORMATION ISSUE | S H | M T |
| SUIT REV | DATE | DESCRIPTION | DRN | CHK |
| SHAMS | | | | |

INFORMATION

THIS DRAWING IS COPYRIGHT © 2007 SCALE FROM DRAWING. THE COMPANY MAKES NO REPRESENTATION AS TO THE ACCURACY OF THE INFORMATION AND DIMENSIONS AND THE USER SHALL BE RESPONSIBLE FOR OBTAINING ALL NECESSARY PERMITS AND APPROVALS.

KJ TAIT
 ENGINEERS
 1 Fitzroy Square
 London, W1T 5BA
 T +44 (0) 207 389 0952
 F +44 (0) 207 389 0953
 W www.kjtaite.com

| | | | |
|----------------------------|--|-------------|-----------------|
| PROJECT INFORMATION | | | |
| CLIENT | OXFORD VICTORIA HOUSE | DEVELOPER | DEV/LOPMENT LTD |
| PROJECT | VICTORIA HOUSE, LONDON, WC1B 4DA | | |
| DRAWING INFORMATION | | | |
| DRAWING TITLE | ELECTRICAL SERVICES, DISTRIBUTION & CONTAINMENT STRATEGY | | |
| DRAWING NUMBER | FOURTH FLOOR | | |
| DESIGNED BY | SH | DATE | JUNE22 |
| DRAWN BY | MZ | KJT JOB NO. | 13221 |
| SCALE | 1:150@A1 | | |
| APP CODE | ORIGINATOR/LEVEL/TYPE/PRICE CLASS NUMBER | SUIT REV | S2-P02 |
| 13221 | KJT-ZZ-04-DR-E-6101 | | |



- LEGEND:**
- RISING BUSBAR LOCATION
 - LOCAL DISTRIBUTION BOARD LOCATION
 - TENANT PANEL / DISTRIBUTION BOARD
 - 150mm HEAVY GAUGE TRAY
 - EXISTING DISTRIBUTION TO REMAIN
 - HIGH LEVEL CONTAINMENT ROUTE:
 - 200x50mm DATA BASKET
 - 100x50mm POWER TRUNKING
 - 50x50mm FIRE ALARM

| | | | | |
|--------|-------------|---|-----|-----|
| S2-P02 | 2007/2022 | BACKGROUND, CHANGED & SERVICES UPDATED TO SUIT. | T S | S H |
| S2-P01 | 10/06/2021 | INFORMATION ISSUE | S H | M T |
| DATE | DESCRIPTION | DRN | CHK | |

INFORMATION

THIS DRAWING IS COPYRIGHT © DO NOT SCALE FROM DRAWING.
 THE CONTRACTOR SHALL VERIFY ALL DIMENSIONS AND LOCATIONS OF ALL SERVICES
 AND DATE BEFORE WORK COMMENCES ON DRAWING NUMBER 10/06/2021

KJ TAIT
 ENGINEERS

1 Fitzroy Square
 London, E1 1BN
 T +44 (0) 207 389 0952
 F +44 (0) 207 389 0953
 W www.kjtaite.com

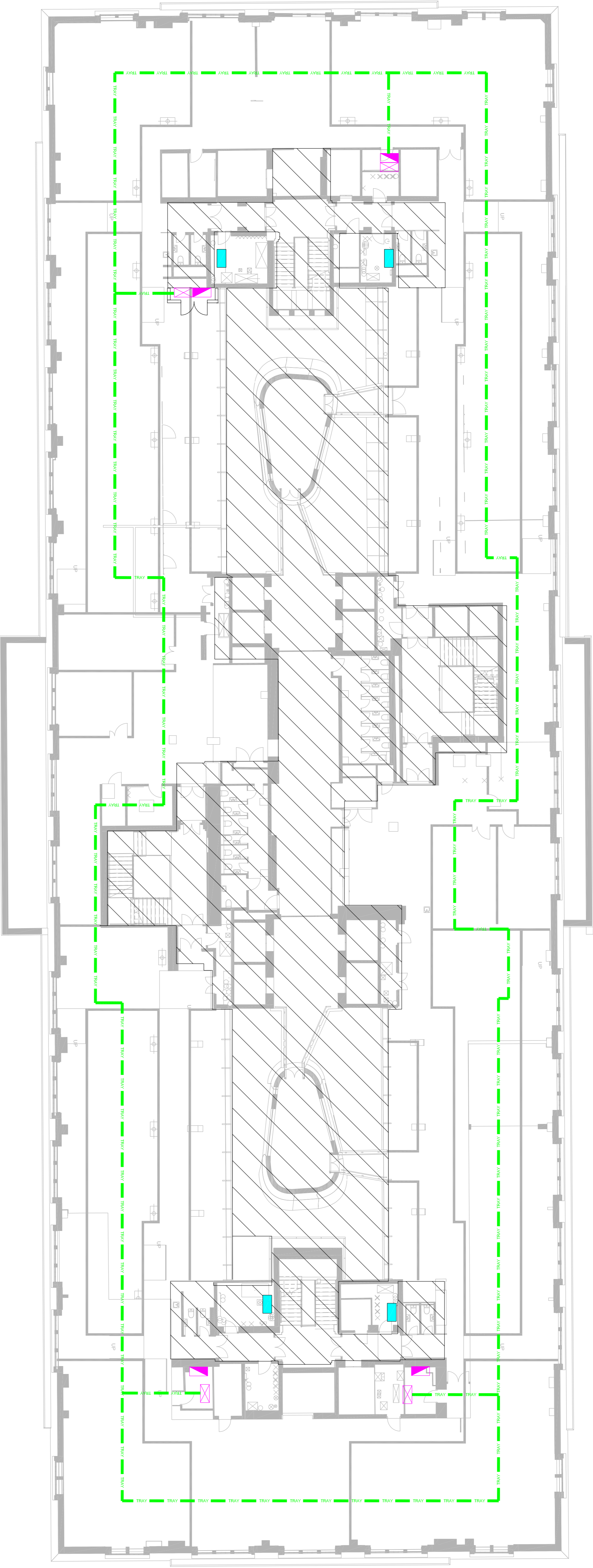
PROJECT INFORMATION

CLIENT OXFORD VICTORIA HOUSE
 DEVELOPMENT LTD
 PROJECT VICTORIA HOUSE, LONDON, WC1B 4DA

DRAWING INFORMATION

DRAWING TITLE ELECTRICAL SERVICES, DISTRIBUTION & CONTAINMENT STRATEGY
 FIFTH FLOOR

| | | | |
|-------------|---------------------------------------|-------------|--------|
| DESIGNED BY | S H | DATE | JUNE22 |
| DRAWN BY | M Z | KJT JOB NO. | 13221 |
| SCALE | 1:150@A1 | | |
| APP CODE | ORIGINATOR/LEVEL/TYPE/NO CLASS NUMBER | SUITE/REV | S2-P01 |
| 13221 | KJT-ZZ-05-DR-E-6101 | | |



- LEGEND:**
- RISING BUSBAR LOCATION
 - LOCAL DISTRIBUTION BOARD LOCATION
 - TENANT PANEL / DISTRIBUTION BOARD
 - 150mm HEAVY GAUGE TRAY
 - EXISTING DISTRIBUTION TO REMAIN
 - HIGH-LEVEL CONTAINMENT ROUTE.
 - 200x50mm DATA BASKET
 - 100x50mm POWER TRUNKING
 - 50x50mm FIRE ALARM

| | | | | |
|----------|------------|--|-----|-----|
| S2-P02 | 2007/2022 | BACKGROUND CHANGED & SERVICES UPDATED TO SUIT. | T S | S.H |
| S2-P01 | 10/06/2021 | INFORMATION ISSUE | S.H | M.T |
| SUIT-REV | DATE | DESCRIPTION | DRN | CHK |
| STANDS | | | | |

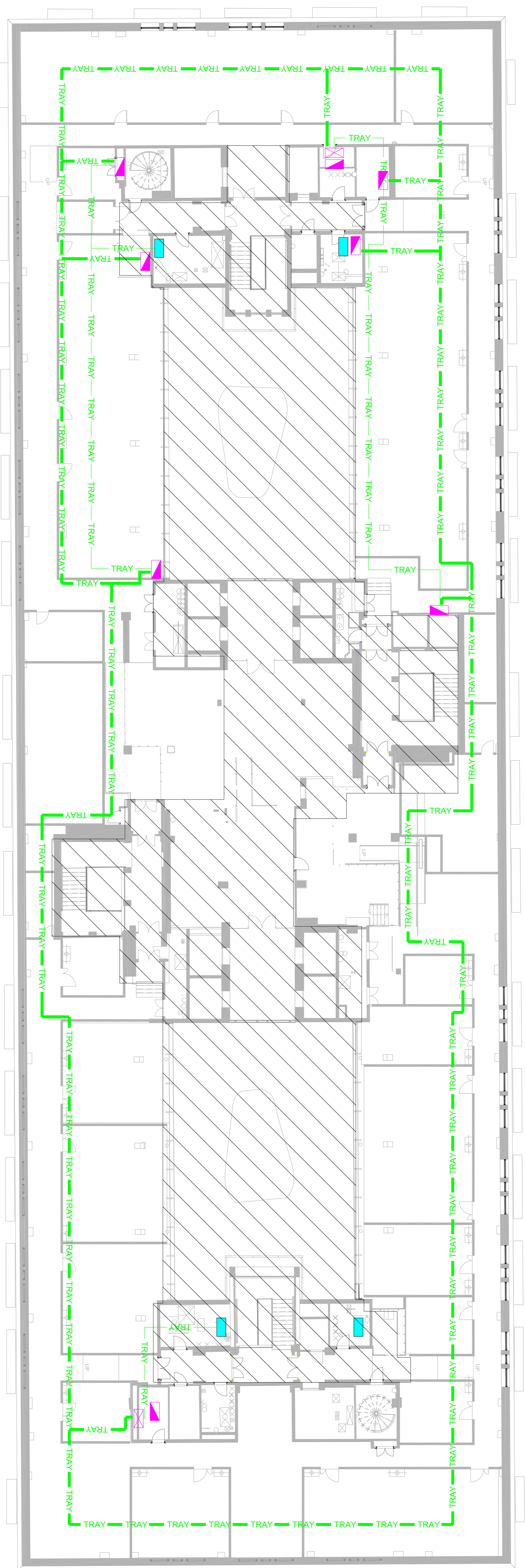
INFORMATION

THIS DRAWING IS COPYRIGHT © DO NOT SCALE FROM DRAWING. ALL DIMENSIONS ARE TO FACE UNLESS SPECIFICALLY NOTED OTHERWISE. ALL DIMENSIONS ARE TO FACE UNLESS SPECIFICALLY NOTED OTHERWISE. ALL DIMENSIONS ARE TO FACE UNLESS SPECIFICALLY NOTED OTHERWISE.

KJ TAIT
ENGINEERS

1 Fitzroy Square
London, E1 1DT
T +44 (0) 207 389 0952
F +44 (0) 207 389 0951
W www.kjtaite.com

| | | | | |
|----------------------------|--|---------------------|--------|--|
| PROJECT INFORMATION | | | | |
| CLIENT | OXFORD VICTORIA HOUSE | | | |
| PROJECT | DEVELOPMENT LTD | | | |
| | VICTORIA HOUSE, LONDON, WC1B 4DA | | | |
| DRAWING INFORMATION | | | | |
| DRAWING TITLE | ELECTRICAL SERVICES, DISTRIBUTION & CONTAINMENT STRATEGY | | | |
| | SIXTH FLOOR | | | |
| DESIGNED BY | S.H | DATE | JUNE22 | |
| DRAWN BY | M.Z | KJT JOB NO. | 13221 | |
| SCALE | 1:150@A1 | | | |
| APP CODE | ORIGINATOR/LEVEL/TYPE/RACE/CLASS NUMBER | SUIT-REV | S2-P02 | |
| | 13221 | KJT-22-06-DR-E-6101 | | |



- LEGEND:**
- RISING BUSBAR LOCATION
 - LOCAL DISTRIBUTION BOARD LOCATION
 - TENANT PANEL / DISTRIBUTION BOARD
 - 150mm HEAVY GAUGE TRAY
 - EXISTING DISTRIBUTION TO REMAIN
 - HIGH LEVEL CONTAINMENT ROUTE
 - 200x50mm DATA BASKET
 - 100x50mm POWER TRUNKING
 - 50x50mm FIRE ALARM

| | | | | |
|----------|------------|--|-----|-----|
| S2-P02 | 2007/2022 | BACKGROUND CHANGES & SERVICES UPDATED TO SUIT. | T S | S H |
| S2-P01 | 10/06/2021 | INFORMATION ISSUE | S H | M T |
| SUIT REV | DATE | DESCRIPTION | DRN | CHK |
| STANDS | | | | |

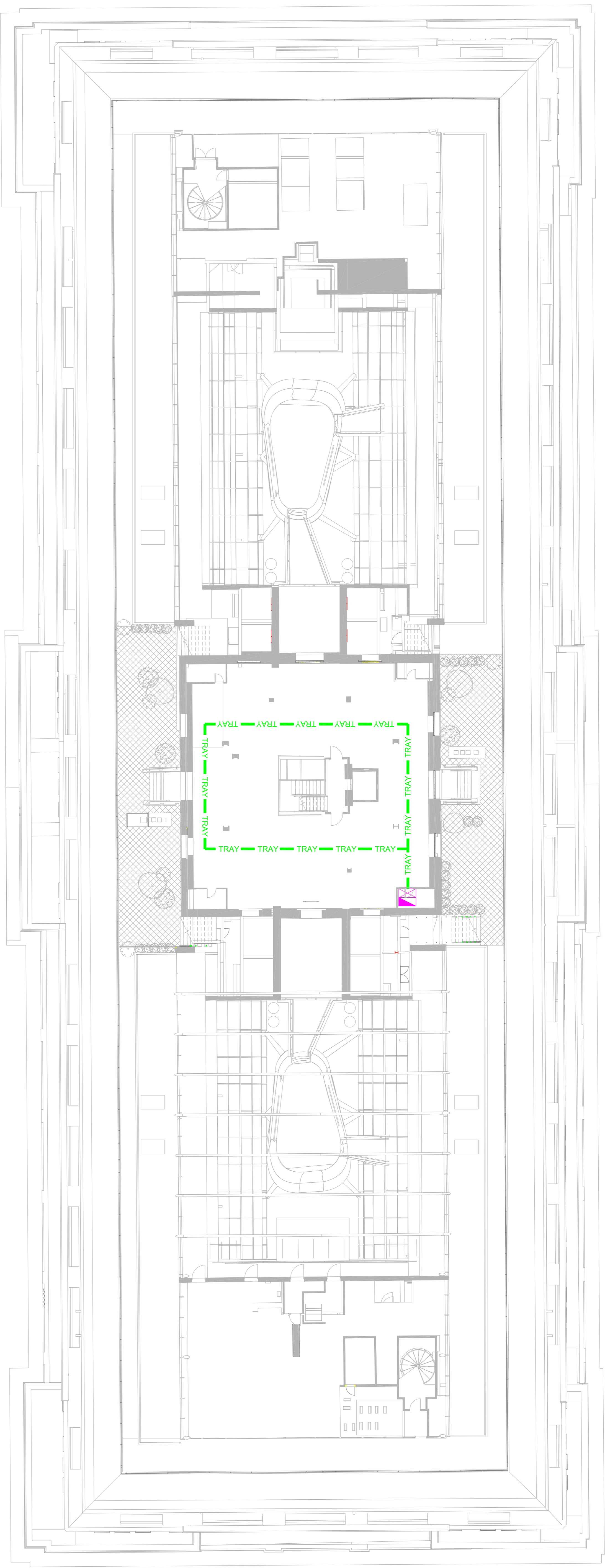
INFORMATION

THIS DRAWING IS COPYRIGHT © DO NOT SCALE FROM DRAWING. THE DATE OF THIS DRAWING IS 10/06/2021. ALL DIMENSIONS ARE TO FACE UNLESS OTHERWISE SPECIFIED. THE DATE OF THIS DRAWING IS 10/06/2021.

KJ TAIT
ENGINEERS

1 Broomfield Square
T +44 (0) 207 389 9652
F +44 (0) 207 389 9651
W www.kjtaite.com

| PROJECT INFORMATION | | | | |
|---------------------|--|-------------|---------|-------|
| CLIENT | OXFORD VICTORIA HOUSE | | | |
| DEVELOPER | DEVELOPMENT LTD | | | |
| PROJECT | VICTORIA HOUSE, LONDON, WC1B 4DA | | | |
| DRAWING INFORMATION | | | | |
| DRAWING TITLE | ELECTRICAL SERVICES, DISTRIBUTION & CONTAINMENT STRATEGY | | | |
| SEVENTH FLOOR | | | | |
| DESIGNED BY | | | | |
| DESIGNED BY | S H | DATE | JUNE 22 | |
| DRAWN BY | | | | |
| DRAWN BY | M Z | KJT JOB NO. | 13221 | |
| SCALE | 1:150@A1 | | DATE | 13221 |
| APP CODE | ORIGINATOR LEVEL/TYPE/RISK CLASS NUMBER | SUIT REV | S2-P02 | |
| 13221 | KJT-22-07-DR-E-6101 | | | |

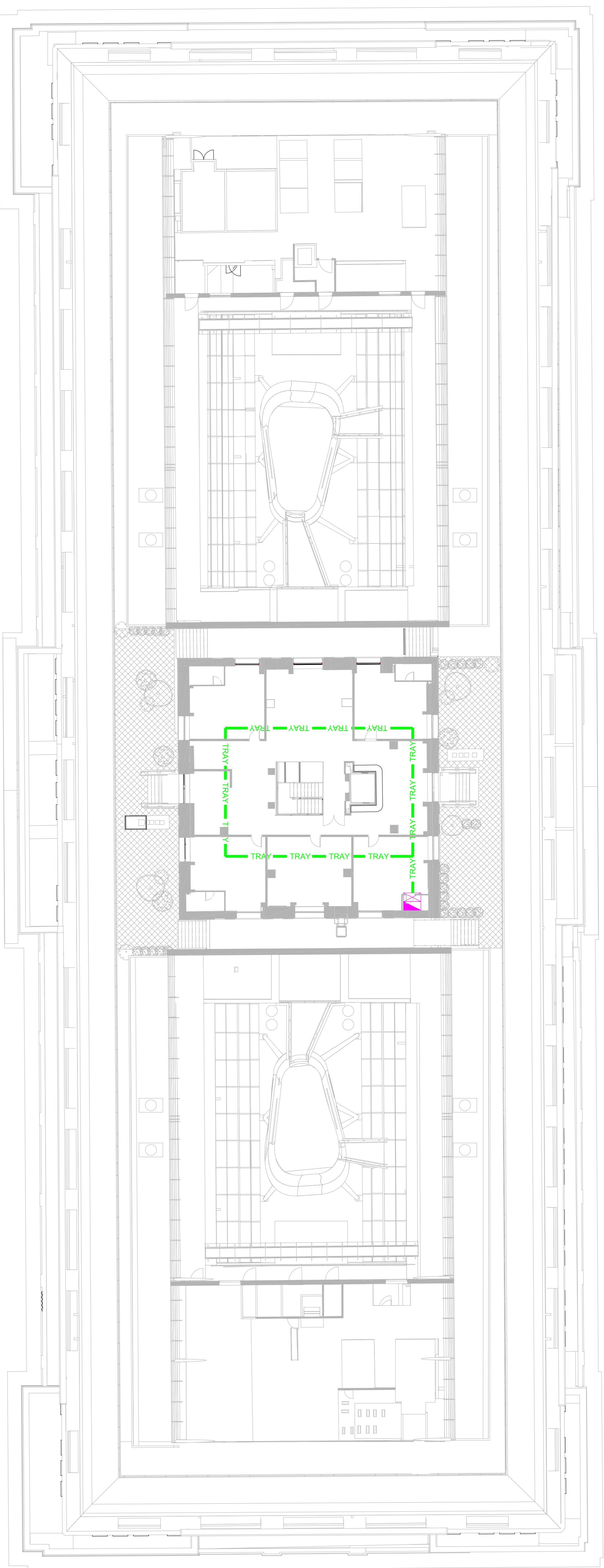


- LEGEND:**
- █ RISING BUSBAR LOCATION
 - █ LOCAL DISTRIBUTION BOARD LOCATION
 - █ TENANT PANEL / DISTRIBUTION BOARD
 - █ 150mm HEAVY GAUGE TRAY
 - █ EXISTING DISTRIBUTION TO REMAIN
 - █ HIGH LEVEL CONTAINMENT ROUTE
 - █ 200x50mm DATA BASKET
 - █ 100x50mm POWER TRUNKING
 - █ 50x50mm FIRE ALARM

| | | | | |
|---|--|--|--------|------|
| S2-P02 | 2007/2022 | BACKGROUND CHANGED & SERVICES UPDATED TO SUIT. | T.S. | M.T. |
| S2-P01 | 10/06/2021 | INFORMATION ISSUE | S.H. | M.T. |
| S2-P00 | 10/06/2021 | INFORMATION ISSUE | S.H. | M.T. |
| INFORMATION | | | | |
| THIS DRAWING IS COPYRIGHT © DO NOT SCALE FROM DRAWING. THE DIMENSIONS AND THE SPACING OF THE DIMENSIONS ARE TO BE TAKEN FROM THE DIMENSIONS AND NOT THE DIMENSION LINES. DIMENSIONS TO FACE UNLESS OTHERWISE SPECIFIED. | | | | |
| PROJECT INFORMATION | | | | |
| CLIENT | OXFORD VICTORIA HOUSE | | | |
| PROJECT | DEVELOPMENT LTD | | | |
| | VICTORIA HOUSE, LONDON, WC1B 4DA | | | |
| DRAWING INFORMATION | | | | |
| DRAWING TITLE | ELECTRICAL SERVICES, DISTRIBUTION & CONTAINMENT STRATEGY | | | |
| | EIGHTH FLOOR | | | |
| DESIGNED BY | S.H. | DATE | JUNE22 | |
| DRAWN BY | M.Z. | KJT JOB NO. | 13221 | |
| SCALE | 1:150@A1 | | | |
| APP CODE | ORIGINATOR/LEVEL/TYPE/PRICE CLASS NUMBER | SUIT NO. | | |
| 13221 | KJT-ZZ-08-DR-E-6101 | S2-P02 | | |

KJ TAIT
ENGINEERS

1 Fitzroy Square
London, W1T 5BA
T +44 (0) 207 389 0952
F +44 (0) 207 389 0953
W www.kjtaite.com



- LEGEND:**
- RISING BUSBAR LOCATION
 - LOCAL DISTRIBUTION BOARD LOCATION
 - TENANT PANEL / DISTRIBUTION BOARD
 - 150mm HEAVY GAUGE TRAY
 - EXISTING DISTRIBUTION TO REMAIN
 - HIGH LEVEL CONTAINMENT ROUTE:
 - 200x50mm DATA BASKET
 - 100x50mm POWER TRUNKING
 - 50x50mm FIRE ALARM

| | | | | |
|----------|------------|--|------|------|
| S2-P02 | 2007/2022 | BACKGROUND CHANGED & SERVICES UPDATED TO SUIT. | T.S. | M.T. |
| S2-P01 | 10/06/2021 | INFORMATION ISSUE | S.H. | M.T. |
| SUIT/REV | DATE | DESCRIPTION | DRN | CHK |

INFORMATION

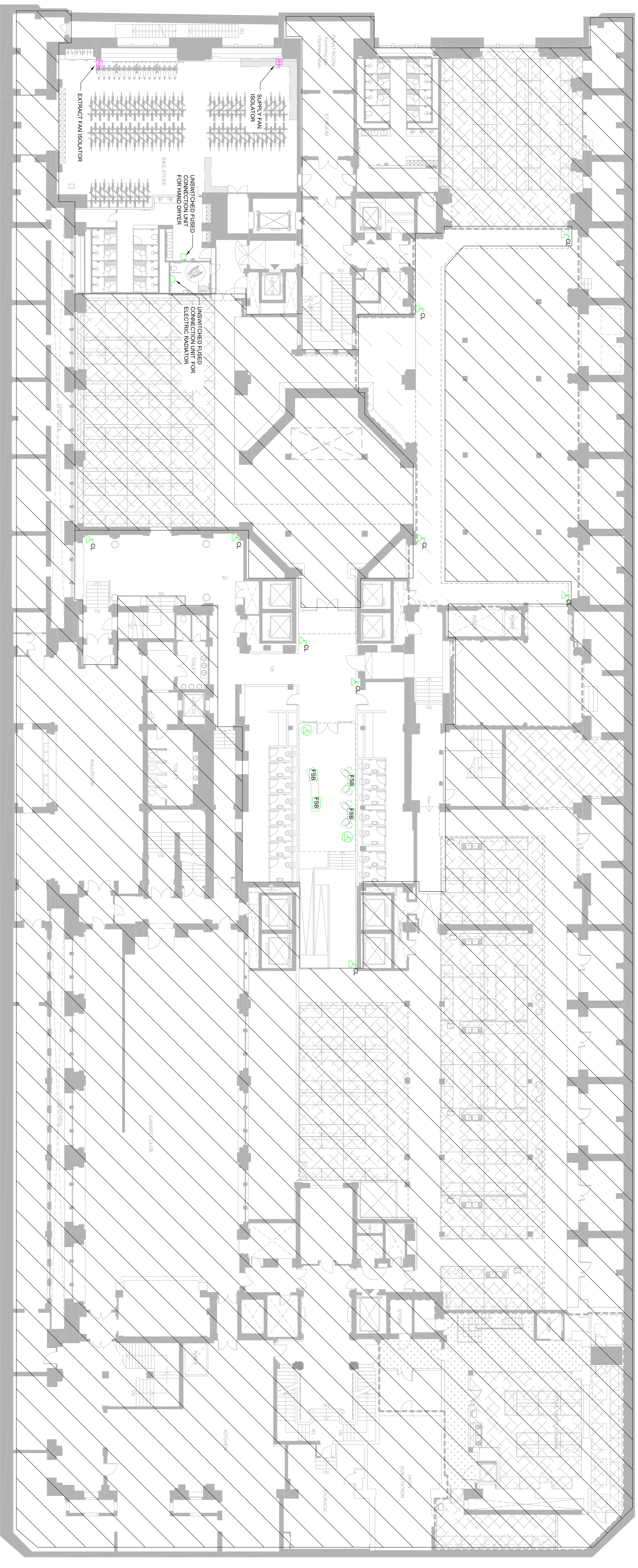
THIS DRAWING IS COPYRIGHT © DO NOT SCALE FROM DRAWING.
 THE CONTRACTOR SHALL VERIFY ALL DIMENSIONS AND LOCATIONS OF ALL SERVICES AND EQUIPMENT TO BE INSTALLED ON SITE.
 ALL DIMENSIONS ARE TO FACE UNLESS OTHERWISE SPECIFIED.

KJ TAIT
 ENGINEERS

1 Fitzroy Square
 London, E1 1DT
 T +44 (0) 207 388 0852
 F +44 (0) 207 388 0853
 W www.kjtaite.com

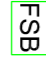





| | | | | |
|----------------------------|--|-------------|----------|--|
| PROJECT INFORMATION | | | | |
| CLIENT | OXFORD VICTORIA HOUSE | | | |
| PROJECT | DEVELOPMENT LTD VICTORIA HOUSE, LONDON, WC1B 4DA | | | |
| DRAWING INFORMATION | | | | |
| DRAWING TITLE | ELECTRICAL SERVICES, DISTRIBUTION & CONTAINMENT STRATEGY | | | |
| DRAWING NUMBER | NINTH FLOOR | | | |
| DESIGNED BY | S.H. | DATE | JUNE22 | |
| DRAWN BY | M.Z. | KJT JOB NO. | 13221 | |
| SCALE | 1:150@A1 | | SUIT/REV | |
| APP CODE | ORIGINATOR/LEVEL/TYPE/NO CLASS NUMBER | DATE | S2-P02 | |
| 13221 | KJT-ZZ-09-DR-E-6101 | | | |

SOUTHAMPTON ROW



BLOOMSBURY SQUARE

LEGEND:

-  FLOOR SERVICE BOX (LOW LEVEL)
-  13A SINGLE SWITCHED CLEANERS SOCKET OUTLET (LOW LEVEL)
-  CLEANERS SOCKET FLOOR GROMMET/HME (LOW LEVEL)
-  LAB BENCH TRUNKING (MID LEVEL)
-  EXISTING DISTRIBUTION TO REMAIN
-  UNSWITCHED FUSED CONNECTION UNIT

INFORMATION

THIS DRAWING IS COPYRIGHT. DO NOT SCALE FROM DRAWING.
THE DIMENSIONS AND THE SIZE OF THE DRAWING ARE TO BE USED AS A GUIDE ONLY.
ALL DIMENSIONS ARE TO UNLESS OTHERWISE SPECIFIED.
ALL DIMENSIONS ARE TO UNLESS OTHERWISE SPECIFIED.

KJ TAIT
ENGINEERS
1 Fenny Street
T +44 (0) 207 289 9852
W www.kjtaite.com

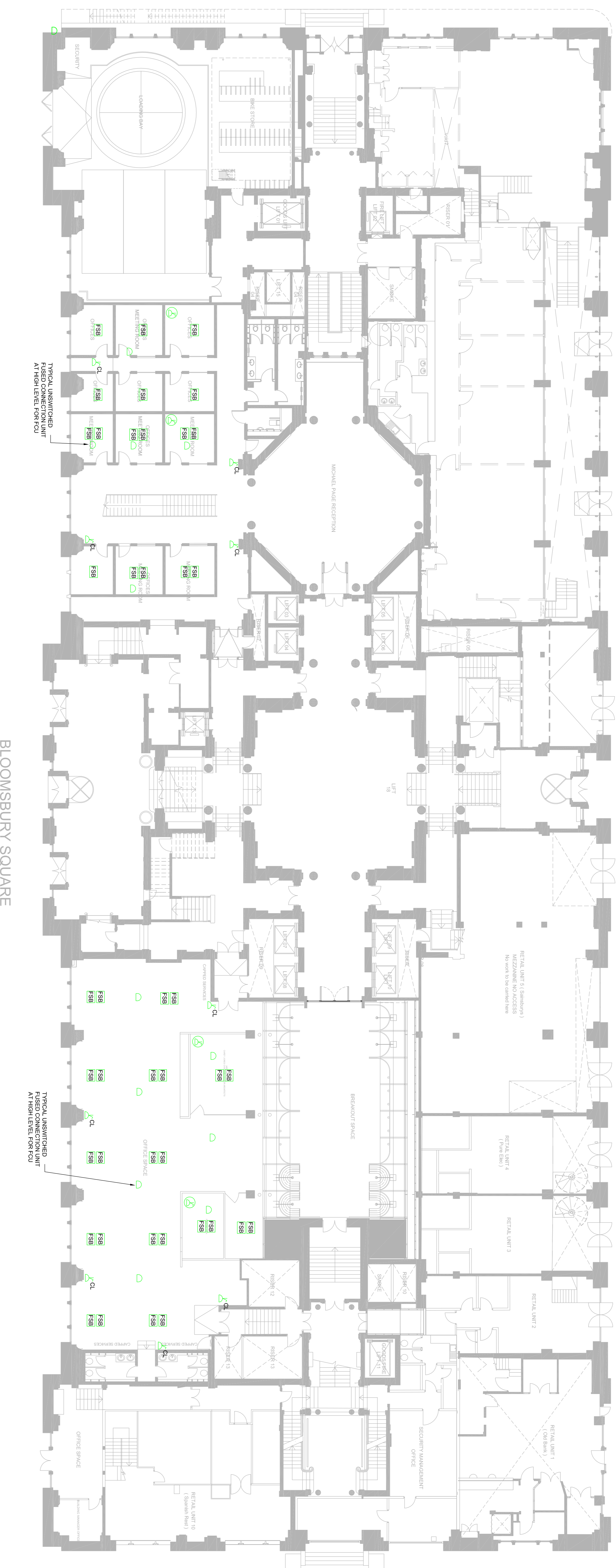
PROJECT INFORMATION

CLIENT OXFORD VICTORIA HOUSE
PROJECT DEVELOPMENT LTD
VICTORIA HOUSE, LONDON, WC1B 4DA

DRAWING INFORMATION

DRAWING TITLE ELECTRICAL SERVICES
SMALL POWER STRATEGY
BASEMENT B1 LEVEL

| DESIGNED BY | SH | DATE | JUNE22 |
|-------------|--|-------------|--------|
| DRAWN BY | MZ | KJT JOB NO. | 13221 |
| SCALE | 1:150@A1 | | |
| APP CODE | ORIGINATOR: ELEC-TYPE: RACK CLASS NUMBER | SUIT: REV | S2-P01 |
| 3221 | KJT-22-B1-DRE-6201 | | |



- LEGEND:**
- FSB FLOOR SERVICE BOX (LOW LEVEL)
 - ⏏ 13A SINGLE SWITCHED CLEANERS SOCKET OUTLET (LOW LEVEL)
 - ⏏ CLEANERS SOCKET FLOOR GROMMET/HAVE (LOW LEVEL)
 - LAB BENCH TRUNKING (MID LEVEL)
 - EXISTING DISTRIBUTION TO REMAIN
 - ⏏ UNSWITCHED FUSED CONNECTION UNIT AT HIGH LEVEL FOR FCU

BLOOMSBURY SQUARE

SOUTHAMPTON ROW

| SYMBOL | DESCRIPTION | DATE | DRN | CHK |
|---------|-------------|-------------------|------|------|
| S2-P101 | 20/07/2024 | INFORMATION ISSUE | T.S. | M.T. |

INFORMATION

THIS DRAWING IS COPYRIGHT. DO NOT SCALE FROM DRAWING. THE DIMENSIONS SHOWN TAKE PRECEDENCE OVER ANY DIMENSIONS NOTED ON THE DRAWING. DIMENSIONS SHOWN TAKE PRECEDENCE OVER DIMENSIONS NOTED ON THE DRAWING.

PROJECT INFORMATION

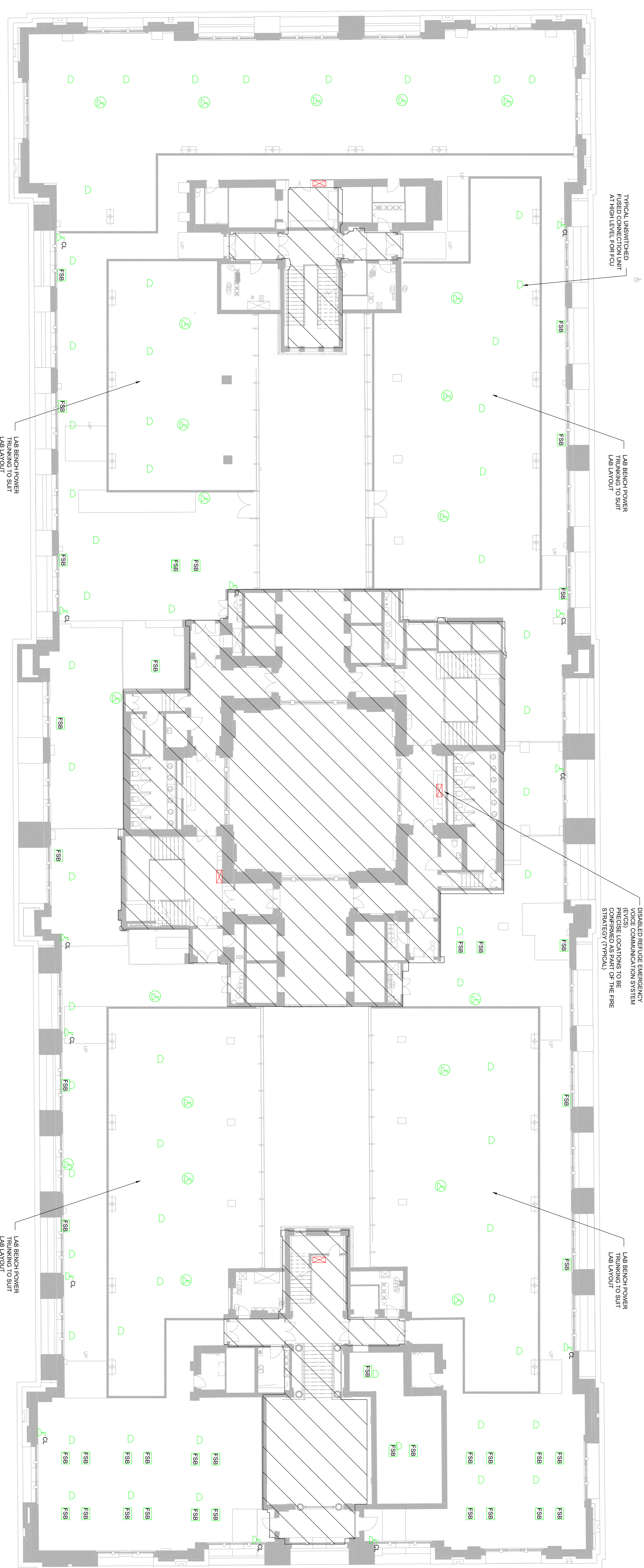
CLIENT: OXFORD VICTORIA HOUSE DEVELOPMENT LTD
 PROJECT: VICTORIA HOUSE, LONDON, WC1B 4DA

DRAWING INFORMATION

DRAWING TITLE: ELECTRICAL SERVICES SMALL POWER STRATEGY UPPER GROUND

| | |
|---|-----------------------------------|
| DESIGNED BY: SH | DATE: JULY 22 |
| DRAWN BY: MZ | KJT JOB NO. 13221 |
| SCALE: 1:150@A1 | SHEET NO. S2-P102 |
| APP CODE: OXFORD VICTORIA HOUSE DEVELOPMENT | CLASS NUMBER: KJT-22-00-DR-E-6201 |

KJ TAIT ENGINEERS
 1 Broomfield Square, London, E1 3AN
 T: +44 (0) 207 388 9852
 F: +44 (0) 207 388 9853
 W: www.kjtait.com



LEGEND:

- FSB FLOOR SERVICE BOX (LOW LEVEL)
- CL 13A SINGLE SWITCHED CLEANERS SOCKET OUTLET (LOW LEVEL)
- CLEANERS SOCKET FLOOR GROMMET/HAVE (LOW LEVEL)
- - - LAB BENCH TRUNKING (MID LEVEL)
- / / / EXISTING DISTRIBUTION TO REMAIN
- UNSWITCHED FUSED CONNECTION UNIT AT HIGH LEVEL FOR FCU
- ⊠ EMERGENCY VOICE COMMUNICATION SYSTEM (EVCS)

INFORMATION

THIS DRAWING IS COPYRIGHT © DO NOT SCALE FROM DRAWING. THE DIMENSIONS SHOWN ARE THE DIMENSIONS OF THE WORK AS SHOWN ON THE DRAWING. THE DIMENSIONS OF THE WORK AS SHOWN ON THE DRAWING ARE THE DIMENSIONS OF THE WORK AS SHOWN ON THE DRAWING.

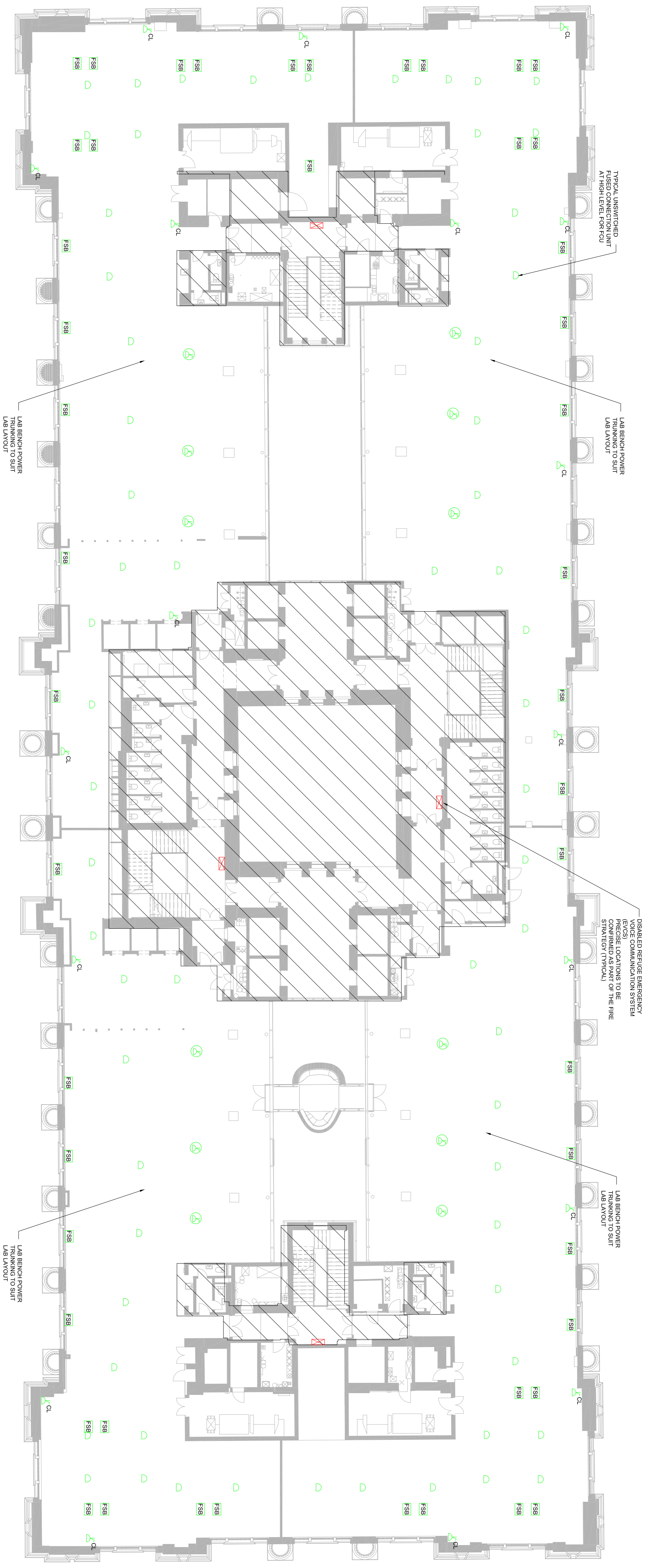
KJ TAIT
ENGINEERS
1 Fitzroy Square
T +44 (0) 207 398 9652
W www.kjtaite.com

PROJECT INFORMATION
CLIENT OXFORD VICTORIA HOUSE DEVELOPMENT LTD
PROJECT VICTORIA HOUSE, LONDON, WC1B 4DA

DRAWING INFORMATION
DRAWING TITLE ELECTRICAL SERVICES SMALL POWER STRATEGY
FIRST FLOOR

| | | | |
|-------------|------------------------------------|---------------------|---------|
| DESIGNED BY | SH | DATE | JUNE22 |
| DRAWN BY | MZ | KJT JOB NO. | 13221 |
| SCALE | 1:150@A1 | | |
| LAB CODE | OXFORD/VICTORIA HOUSE/CLASS NUMBER | SUIT/REV | S2-P102 |
| | 13221 | KJT-22-01-DR-E-6201 | |

| | | | | |
|----------|------------|--|-----|-----|
| S2-P102 | 2007/2022 | BACKGROUND CHANGED & SERVICES UPDATED TO SUIT. | TS | SH |
| S2-P101 | 10/06/2021 | INFORMATION ISSUE | SH | MT |
| SUIT/REV | DATE | DESCRIPTION | DRN | CHK |
| | | | | |



- LEGEND:**
- FSB FLOOR SERVICE BOX (LOW LEVEL)
 - CL 13A SINGLE SWITCHED CLEANERS SOCKET OUTLET (LOW LEVEL)
 - G CLEANERS SOCKET FLOOR GROMMET/HINE (LOW LEVEL)
 - LAB BENCH TRUNKING (MID LEVEL)
 - EXISTING DISTRIBUTION TO REMAIN
 - UNSWITCHED FUSED CONNECTION UNIT AT HIGH LEVEL FOR FCU
 - ⊗ EMERGENCY VOICE COMMUNICATION SYSTEM (EVCS)

| | | | | |
|---|------------|--|-----|-----|
| S2-P02 | 20/07/2022 | BACKGROUND CHANGES & SERVICES UPDATED TO SUIT. | T S | S H |
| S2-P01 | 10/06/2022 | INFORMATION ISSUE | S H | M T |
| S2-P00 | 10/06/2022 | INFORMATION ISSUE | S H | M T |
| INFORMATION | | | | |
| <p>THIS DRAWING IS COPYRIGHT © DO NOT SCALE FROM DRAWING. THE DIMENSIONS AND THE SIZE OF THE DRAWING ARE TO GOVERN OVER ANY DIMENSIONS AND THE SIZE OF THE DRAWING. THE DIMENSIONS AND THE SIZE OF THE DRAWING ARE TO GOVERN OVER ANY DIMENSIONS AND THE SIZE OF THE DRAWING.</p> | | | | |
| <p>PROJECT INFORMATION</p> <p>CLIENT OXFORD VICTORIA HOUSE DEVELOPER DEVELOPMENT LTD PROJECT VICTORIA HOUSE, LONDON, WC1B 4DA</p> <p>DRAWING INFORMATION</p> <p>DRAWING TITLE ELECTRICAL SERVICES SMALL POWER STRATEGY SECOND FLOOR</p> <p>DESIGNED BY S H DATE JUNE22 DRAWN BY M Z KJT JOB NO. 13221 SCALE 1:150@A1 JOB CODE OXFORD VICTORIA HOUSE CLASS NUMBER 13221 DRAWING NUMBER KJT-22-02-DR-E-6201 SHEET NUMBER S2-P02</p> | | | | |
| <p>KJ TAIT ENGINEERS</p> <p>1 Station Square T +44 (0) 207 388 9652 F +44 (0) 207 388 9653 W www.kj-tait.com</p> | | | | |