

General Listing Of File:- 21_CressyRoad.CYC (16/08/2022)

General Information

Project Reference	21_CressyRoad	Weather File	Weather Database.DBE
Orientation	260 deg		
Elevation	0m		

Location Information

Location	London	Height above Sea Level	15 m
Latitude	51.7 deg	Longitude	0.0 deg
Climate	Temperate	Design Outside Temp	-4.0 °C

Month No.	Day	Maximum °C	Minimum °C	Wet Bulb °C
7	21	30.0	13.5	21.0

Window Information Based on CressySt.DBU (12/08/2022)

No.	Reference	T-Solar	L-Solar	U-Value W/m ² K	Solar Gain Code
1	L1A 2013 Whole Window U-value	0.64	0.90	1.40	580000

External Wall Fabrics

Reference	Kappa m kJ/m ² K	U-Value W/m ² K	Admitt. W/m ² K	Time Lead	Decrement Factor	Time Lag	Absorp. Coeff.
L1A 2013 Wall	50.00	0.18	0.20	4	0.193	10	0.95
215 brick 20 render plaster	141.90	1.45	3.95	2	0.360	9	0.86

Exposed Floor Fabrics

Reference	Kappa m kJ/m ² K	U-Value W/m ² K	Admitt. W/m ² K	Time Lead	Decrement Factor	Time Lag	Absorp. Coeff.
L1A Exposed Floor	60.00	0.13	0.20	2	---	0	---

Roof Fabrics

Reference	Kappa m kJ/m ² K	U-Value W/m ² K	Admitt. W/m ² K	Time Lead	Decrement Factor	Time Lag	Absorp. Coeff.
L1A 2013 Roof	9.00	0.13	0.20	5	0.973	2	0.97
#Virtual Roof Boundary	1.00	1.00	1.00	---	---	---	---

External Door Fabrics

Reference	Kappa m kJ/m ² K	U-Value W/m ² K	Admitt. W/m ² K	Time Lead	Decrement Factor	Time Lag	Absorp. Coeff.
L1A 2013 Glazed door	8.00	1.40	1.30	1	0.981	1	0.72

Partition Fabrics

Reference	Kappa m kJ/m ² K	U-Value W/m ² K	Admitt. W/m ² K	Time Lead	Decrement Factor	Time Lag	Absorp. Coeff.
L1A Party Wall MT Cavity, No edgeseal	50.00	0.50	6.50	2	---	0	---
#Virtual Internal Boundary	1.00	1.00	1.00	---	---	---	---
1930s External Wall as Internal Partition	141.90	1.45	3.95	2	0.360	9	0.86

Internal Floor Fabrics

Reference	Kappa m kJ/m ² K	U-Value W/m ² K	Admitt. W/m ² K	Time Lead	Decrement Factor	Time Lag	Absorp. Coeff.
Internal floor	180.30	1.30	3.20	2	---	0	---

Ceiling Fabrics

Reference	Kappa m kJ/m ² K	U-Value W/m ² K	Admitt. W/m ² K	Time Lead	Decrement Factor	Time Lag	Absorp. Coeff.
Internal Ceiling	22.50	0.25	1.00	---	---	1	---

External Door Fabrics

Reference	Kappa m kJ/m ² K	U-Value W/m ² K	Admitt. W/m ² K	Time Lead	Decrement Factor	Time Lag	Absorp. Coeff.
L1A 2013 Glazed door	8.00	1.40	1.30	1	0.981	1	0.72

Summary Room Listing:- 21_CRESSYROAD.CYC (16/08/2022)

Room/Zone Selection: All Rooms

Room No.	Room Name	Activity Level	Floor Area m ²	Volume m ³	Zone
1	L00-01a		19.8	53	Kitchen
2	L00-01b		15.5	41	Kitchen
3	L00-02		18.8	50	Living
4	L00-03		7.3	20	Entrance / Stair
5	L00-04		1.2	3	WC
100	L01-01		14.6	38	Living
101	L01-02		5.3	14	WC
102	L01-03		10.7	28	Living
104	L01-04		7.7	20	Entrance / Stair
200	L02-01a		13.0	36	Living
201	L02-01b		8.0	30	Living
202	L02-02		3.6	10	WC
203	L02-03a		3.8	15	Entrance / Stair
204	L02-03b		3.3	12	Entrance / Stair
Totals for the Building			132.5	369	

Template Room Data Listing:- 21_CressyRoad.CYC (16/08/2022)

Zone	Living	Based On	
Heat Gain Temperature	23.0 °C	Nominal Length	0.00 m
Heat Loss Temperature	20.0 °C	Nominal Width	0.00 m
Summertime Temperature	23.0 °C	Height	0.00 m
Humidity	50 %		
Cooling Plant	0.00 kW	Heating Plant	0.00 kW

Ventilation Listing

Infiltration	1.00 ac/h
Ventilation	0.000 m ³ /s
Vent. Per Person	0 l/s

Internal Gains Listing

Activity Level: Light Work

Type	Entry 1	Entry 2	Time On	Time Off
People 1	0.0 m ² /person	2 people	0 hrs	24 hrs
People 2	0.0 m ² /person	0 people	9 hrs	17 hrs
Lights 1	8.0 W/m ²	0 W	7 hrs	22 hrs
Lights 2	0.0 W/m ²	0 W	9 hrs	17 hrs
Equipment 1	0.0 W/m ²	456 W	9 hrs	17 hrs
Equipment 2	0.0 W/m ²	260 W	17 hrs	22 hrs
Equipment 3	0.0 W/m ²	0 W	9 hrs	17 hrs
Latent Equip	0 W			

Listing For Template Kitchen/ Living Room

Zone	Kitchen	Based On	
Heat Gain Temperature	23.0 °C	Nominal Length	0.00 m
Heat Loss Temperature	20.0 °C	Nominal Width	0.00 m
Summertime Temperature	23.0 °C	Height	0.00 m
Humidity	50 %		
Cooling Plant	0.00 kW	Heating Plant	0.00 kW

Ventilation Listing

Infiltration	1.00 ac/h
Ventilation	0.000 m ³ /s
Vent. Per Person	0 l/s

Internal Gains Listing

Activity Level: Light Work

Type	Entry 1	Entry 2	Time On	Time Off
People 1	0.0 m ² /person	2 people	7 hrs	22 hrs
People 2	0.0 m ² /person	0 people	9 hrs	17 hrs
Lights 1	8.0 W/m ²	0 W	7 hrs	22 hrs
Lights 2	0.0 W/m ²	0 W	9 hrs	17 hrs
Equipment 1	0.0 W/m ²	600 W	6 hrs	9 hrs
Equipment 2	0.0 W/m ²	550 W	9 hrs	17 hrs
Equipment 3	0.0 W/m ²	1580 W	17 hrs	19 hrs
Latent Equip	0 W			

Listing For Template WC

Zone	WC	Based On	
Heat Gain Temperature	23.0 °C	Nominal Length	0.00 m
Heat Loss Temperature	20.0 °C	Nominal Width	0.00 m
Summertime Temperature	23.0 °C	Height	0.00 m
Humidity	50 %		
Cooling Plant	0.00 kW	Heating Plant	0.00 kW

Ventilation Listing

Infiltration	1.00 ac/h
Ventilation	0.000 m ³ /s
Vent. Per Person	0 l/s

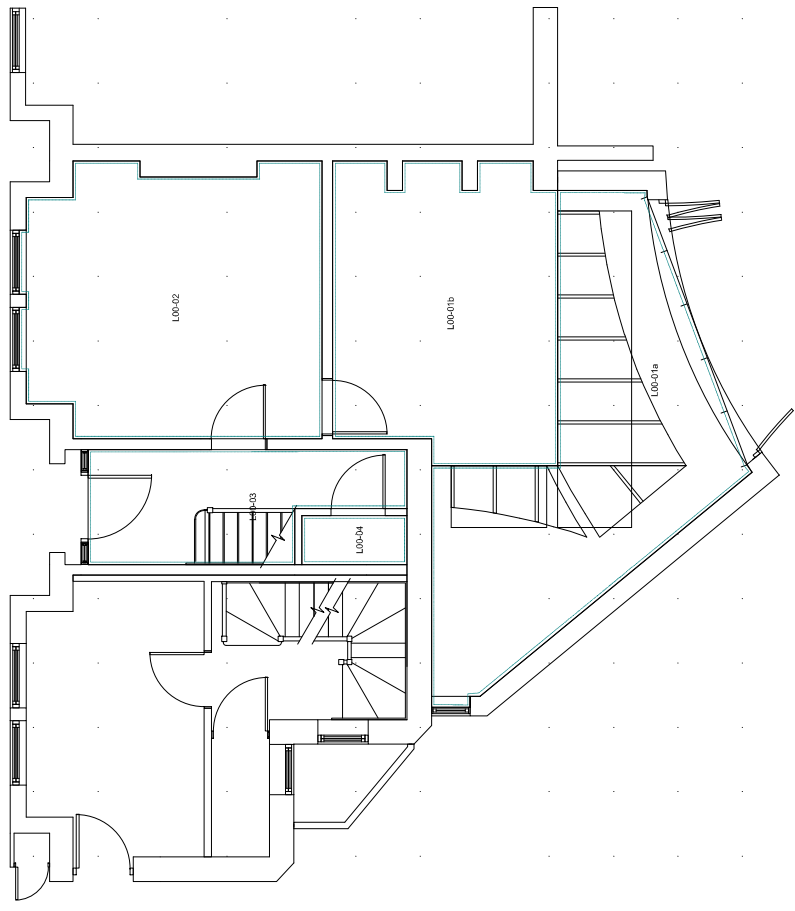
Listing For Template Entrance / Stair

Zone	Entrance / Stair	Based On	
Heat Gain Temperature	23.0 °C	Nominal Length	0.00 m
Heat Loss Temperature	20.0 °C	Nominal Width	0.00 m
Summertime Temperature	23.0 °C	Height	0.00 m
Humidity	50 %		
Cooling Plant	0.00 kW	Heating Plant	0.00 kW

Ventilation Listing

Infiltration	1.00 ac/h
Ventilation	0.000 m ³ /s
Vent. Per Person	0 l/s

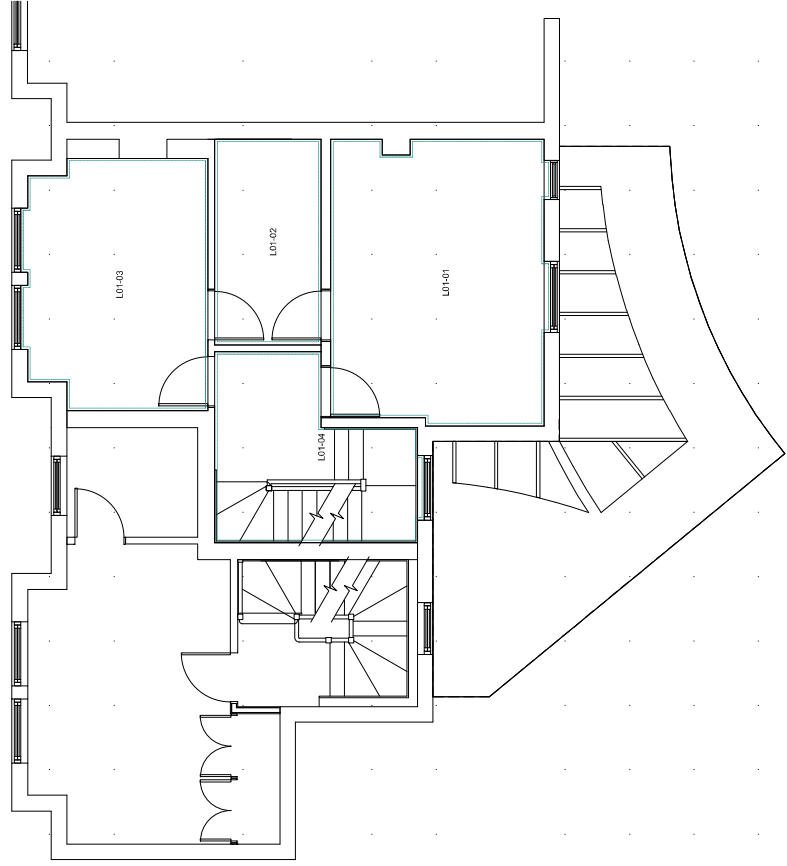
Screen Display for File:- 21_CressyRoad.CYC



DXF File: Ground Floor Stripped.dxf

Floor Level: 0.3m

Screen Display for File:- 21_CressyRoad.CYC

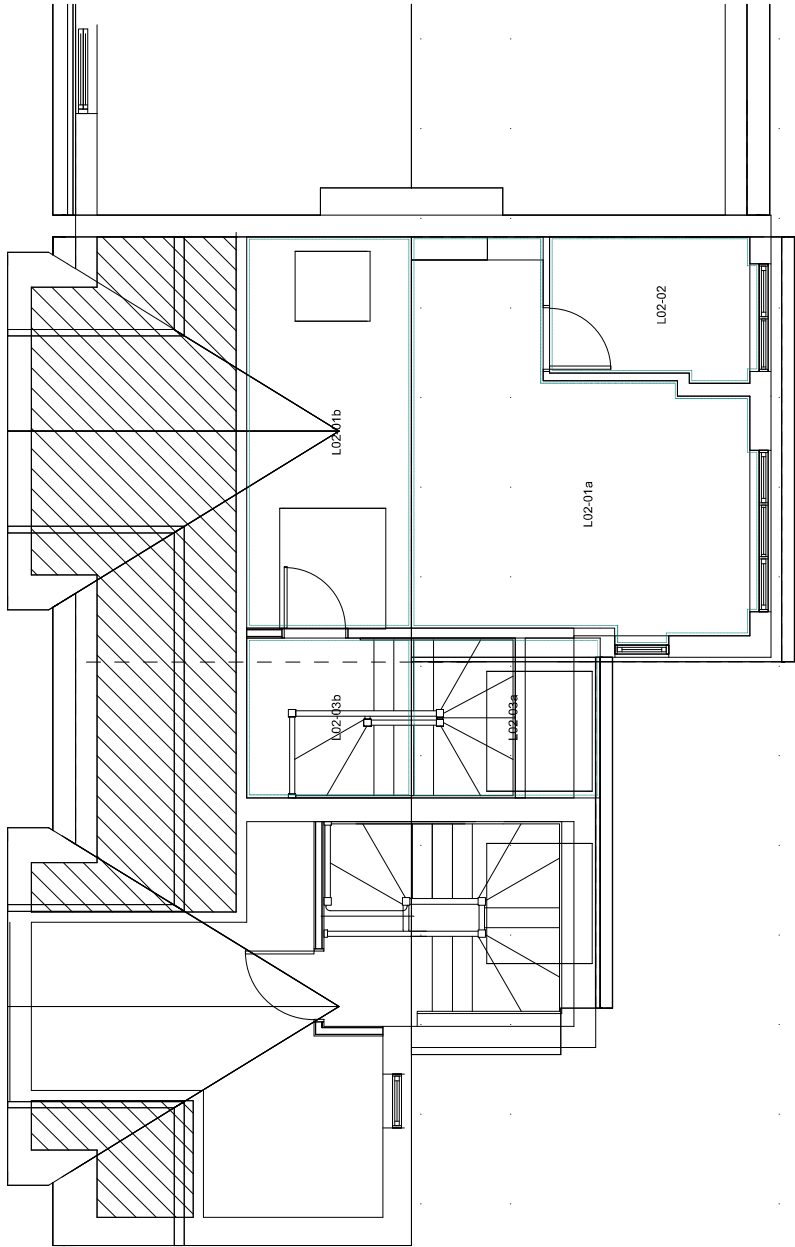


DXF File: First Floor Stripped.dxf

Floor Level: 3.1m



Screen Display for File:- 21_CressyRoad.CYC



DXF File: Second Floor Stripped.dxf

Floor Level: 5.9m

Heatgains using File:- 21_CressyRoad.CYC (16/08/2022)

General Information

Project Reference	21_CressyRoad
Areas Calculated	All Rooms

Temp Difference for Air Volume Calc	8.0 C	Temperature Type	AIR
Building Weight	LIGHTWEIGHT	Plant Hours	24 hrs

		Diversity On People	100%
Diversity On Lighting	100%	Diversity On Equipment	100%

This Report includes:

For each Room - Summary

Month	Day	Maximum °C	Minimum °C	Wet Bulb °C
July	21	30.0	13.5	21.0

Summary of Peak Sensible and Latent Room Heatgains in kW

ROOM	ROOM NAME	SENSIBLE	LATENT	m ³ /s	=ac/h
1	L00-01a	4.87	0.24	0.493	33.6
2	L00-01b	1.95	0.21	0.198	17.2
3	L00-02	1.35	0.23	0.136	9.8
4	L00-03	0.28	0.05	0.028	5.2
5	L00-04	0.01	0.01	0.001	0.8
100	L01-01	1.25	0.20	0.126	11.9
101	L01-02	0.03	0.03	0.003	0.9
102	L01-03	1.25	0.18	0.126	16.2
104	L01-04	0.40	0.05	0.040	7.2
200	L02-01a	0.95	0.14	0.096	9.6
201	L02-01b	1.17	0.13	0.118	14.2
202	L02-02	0.27	0.02	0.027	9.8
203	L02-03a	0.54	0.03	0.055	13.7
204	L02-03b	0.11	0.03	0.012	3.4
TOTAL		14.43	1.55	1.460	

m³/s: air quantity for maximum heatgain

Summer Temperatures using File:- 21_CressyRoad.CYC (16/08/2022)

General Information

Project Reference	21_CressyRoad
Areas Calculated	All Rooms

Temp Difference for Air Volume Calc	8.0 C	Temperature Type	AIR
Building Weight	LIGHTWEIGHT	Plant Hours	24 hrs

This Report includes:

For each Room - Numeric, Summary

Month	Day	Maximum °C	Minimum °C	Wet Bulb °C
July	21	30.0	13.5	21.0

Summertime Temperatures for Room 1

NAME: L00-01a

DATE: Jul 21

hr	Glazing		Fabric W	People W	Lights +Equip W	Infil. W	Mech. Vent W	Air Temp °C	Outside Temp °C
	Solar W	Trans W							
1	187	-616	878	---	---	-449	---	41.9	16.6
2	187	-631	908	---	---	-463	---	41.3	15.3
3	187	-643	929	---	---	-473	---	40.9	14.3
4	187	-650	942	---	---	-479	---	40.6	13.7
5	498	-718	759	---	---	-539	---	43.8	13.5
6	1008	-821	444	---	---	-630	---	49.3	13.9
7	1556	-994	-94	156	158	-781	---	59.0	15.1
8	2071	-1085	-439	156	158	-861	---	65.3	16.9
9	2554	-1164	-774	156	158	-929	---	71.4	19.2
10	2934	-1218	-1054	156	158	-976	---	76.6	21.8
11	3173	-1241	-1250	156	158	-997	---	80.3	24.3
12	3502	-1286	-1494	156	158	-1036	---	84.8	26.6
13	3995	-1372	-1825	156	158	-1112	---	90.9	28.4
14	4241	-1412	-1996	156	158	-1147	---	94.0	29.6
15	4202	-1399	-1981	156	158	-1135	---	93.8	30.0
16	3869	-1329	-1779	156	158	-1074	---	90.2	29.8
17	3247	-1201	-1398	156	158	-962	---	83.3	29.2
18	2328	-1013	-832	156	158	-797	---	73.0	28.2
19	1154	-773	-107	156	158	-587	---	59.9	26.9
20	187	-581	500	156	158	-419	---	48.9	25.3
21	187	-601	537	156	158	-436	---	48.1	23.6
22	187	-554	763	---	---	-396	---	44.0	21.8
23	187	-576	805	---	---	-415	---	43.2	19.9
24	187	-597	843	---	---	-433	---	42.5	18.2

Peak Summertime Temp	94.0 C at 14 hrs
Requested Peak Temp	23.0 C
Average Room Temp	62.8 C
Requested Infiltration	1.00 ac/h
Necessary Infiltration	Air Con Required

Summertime Temperatures for Room 2

NAME: L00-01b

DATE: Jul 21

hr	Glazing		Fabric W	People W	Lights +Equip W	Infil. W	Mech. Vent W	Air Temp °C	Outside Temp °C
	Solar W	Trans W							
1	---	---	502	---	---	-502	---	52.6	16.6
2	---	---	518	---	---	-518	---	52.5	15.3
3	---	---	530	---	---	-530	---	52.4	14.3
4	---	---	538	---	---	-538	---	52.3	13.7
5	---	---	540	---	---	-540	---	52.3	13.5
6	---	---	-4	---	600	-596	---	56.6	13.9
7	---	---	-270	156	724	-609	---	58.8	15.1
8	---	---	-293	156	724	-586	---	59.0	16.9
9	---	---	-277	156	674	-552	---	58.8	19.2
10	---	---	-309	156	674	-520	---	59.1	21.8
11	---	---	-341	156	674	-488	---	59.3	24.3
12	---	---	-370	156	674	-460	---	59.6	26.6
13	---	---	-393	156	674	-437	---	59.8	28.4
14	---	---	-407	156	674	-422	---	59.9	29.6
15	---	---	-412	156	674	-417	---	59.9	30.0
16	---	---	-410	156	674	-419	---	59.9	29.8
17	---	---	-1329	156	1704	-531	---	67.3	29.2
18	---	---	-1316	156	1704	-543	---	67.2	28.2
19	---	---	121	156	124	-401	---	55.6	26.9
20	---	---	141	156	124	-420	---	55.5	25.3
21	---	---	163	156	124	-442	---	55.3	23.6
22	---	---	437	---	---	-437	---	53.1	21.8
23	---	---	460	---	---	-460	---	52.9	19.9
24	---	---	482	---	---	-482	---	52.8	18.2

Peak Summertime Temp	67.3 C at 17 hrs
Requested Peak Temp	23.0 C
Average Room Temp	57.2 C
Requested Infiltration	1.00 ac/h
Necessary Infiltration	Air Con Required

Summertime Temperatures for Room 3

NAME: L00-02

DATE: Jul 21

hr	Glazing		Fabric W	People W	Lights +Equip W	Infil. W	Mech. Vent W	Air Temp °C	Outside Temp °C
	Solar W	Trans W							
1	86	-94	219	156	---	-368	---	38.4	16.6
2	86	-97	241	156	---	-386	---	38.1	15.3
3	86	-99	257	156	---	-399	---	38.0	14.3
4	86	-101	266	156	---	-408	---	37.8	13.7
5	276	-104	101	156	---	-428	---	38.9	13.5
6	469	-107	-77	156	---	-441	---	40.0	13.9
7	578	-108	-327	156	150	-449	---	41.6	15.1
8	613	-104	-390	156	150	-424	---	42.0	16.9
9	586	-105	-810	156	606	-432	---	44.8	19.2
10	508	-97	-787	156	606	-386	---	44.6	21.8
11	389	-88	-727	156	606	-335	---	44.2	24.3
12	243	-80	-639	156	606	-286	---	43.5	26.6
13	184	-74	-619	156	606	-253	---	43.4	28.4
14	178	-71	-629	156	606	-238	---	43.7	29.6
15	167	-71	-623	156	606	-235	---	43.9	30.0
16	154	-72	-605	156	606	-239	---	43.9	29.8
17	139	-70	-407	156	410	-228	---	42.7	29.2
18	122	-72	-374	156	410	-242	---	42.5	28.2
19	103	-75	-334	156	410	-260	---	42.3	26.9
20	86	-79	-292	156	410	-281	---	42.0	25.3
21	86	-83	-263	156	410	-306	---	41.7	23.6
22	86	-81	131	156	---	-292	---	39.0	21.8
23	86	-86	163	156	---	-320	---	38.8	19.9
24	86	-87	330	---	---	-330	---	37.7	18.2

Peak Summertime Temp	44.8 C at	9 hrs
Requested Peak Temp	23.0 C	
Average Room Temp	41.4 C	
Requested Infiltration	1.00 ac/h	
Necessary Infiltration	Air Con Required	

Summertime Temperatures for Room 4

NAME: L00-03

DATE: Jul 21

hr	Glazing		Fabric W	People W	Lights +Equip W	Infil. W	Mech. Vent W	Air Temp °C	Outside Temp °C
	Solar W	Trans W							
1	39	-17	71	---	---	-93	---	30.8	16.6
2	39	-18	80	---	---	-101	---	30.6	15.3
3	39	-19	86	---	---	-107	---	30.5	14.3
4	39	-19	90	---	---	-110	---	30.5	13.7
5	121	-20	16	---	---	-117	---	31.2	13.5
6	204	-21	-63	---	---	-120	---	32.2	13.9
7	251	-20	-113	---	---	-117	---	32.9	15.1
8	266	-19	-139	---	---	-108	---	33.3	16.9
9	254	-17	-144	---	---	-93	---	33.4	19.2
10	221	-15	-130	---	---	-76	---	33.2	21.8
11	169	-13	-100	---	---	-57	---	32.9	24.3
12	107	-10	-58	---	---	-38	---	32.4	26.6
13	81	-9	-48	---	---	-25	---	32.2	28.4
14	78	-8	-53	---	---	-18	---	32.3	29.6
15	74	-8	-51	---	---	-15	---	32.3	30.0
16	68	-8	-44	---	---	-16	---	32.3	29.8
17	62	-8	-34	---	---	-20	---	32.2	29.2
18	55	-9	-21	---	---	-25	---	32.0	28.2
19	47	-10	-4	---	---	-32	---	31.8	26.9
20	39	-11	13	---	---	-41	---	31.6	25.3
21	39	-12	24	---	---	-51	---	31.4	23.6
22	39	-13	37	---	---	-62	---	31.2	21.8
23	39	-15	49	---	---	-73	---	31.1	19.9
24	39	-16	61	---	---	-84	---	30.9	18.2

Peak Summertime Temp	33.4 C at 9 hrs
Requested Peak Temp	23.0 C
Average Room Temp	31.9 C
Requested Infiltration	1.00 ac/h
Necessary Infiltration	Air Con Required

Summertime Temperatures for Room 5

NAME: L00-04

DATE: Jul 21

hr	Glazing		Fabric W	People W	Lights +Equip W	Infil. W	Mech. Vent W	Air Temp °C	Outside Temp °C
	Solar W	Trans W							
1	---	---	6	---	---	-6	---	21.6	16.6
2	---	---	7	---	---	-7	---	21.5	15.3
3	---	---	8	---	---	-8	---	21.5	14.3
4	---	---	9	---	---	-9	---	21.5	13.7
5	---	---	9	---	---	-9	---	21.5	13.5
6	---	---	8	---	---	-8	---	21.5	13.9
7	---	---	7	---	---	-7	---	21.5	15.1
8	---	---	5	---	---	-5	---	21.6	16.9
9	---	---	3	---	---	-3	---	21.7	19.2
10	---	---	---	---	---	---	---	21.8	21.8
11	---	---	-3	---	---	3	---	21.8	24.3
12	---	---	-5	---	---	5	---	21.9	26.6
13	---	---	-7	---	---	7	---	22.0	28.4
14	---	---	-8	---	---	8	---	22.0	29.6
15	---	---	-9	---	---	9	---	22.0	30.0
16	---	---	-9	---	---	9	---	22.0	29.8
17	---	---	-8	---	---	8	---	22.0	29.2
18	---	---	-7	---	---	7	---	22.0	28.2
19	---	---	-6	---	---	6	---	21.9	26.9
20	---	---	-4	---	---	4	---	21.9	25.3
21	---	---	-2	---	---	2	---	21.8	23.6
22	---	---	---	---	---	---	---	21.8	21.8
23	---	---	2	---	---	-2	---	21.7	19.9
24	---	---	4	---	---	-4	---	21.6	18.2

Peak Summertime Temp	22.0 C at 15 hrs
Requested Peak Temp	23.0 C
Average Room Temp	21.8 C
Requested Infiltration	1.00 ac/h
Necessary Infiltration	As Requested

Summertime Temperatures for Room 100

NAME: L01-01

DATE: Jul 21

hr	Glazing		Fabric W	People W	Lights +Equip W	Infil. W	Mech. Vent W	Air Temp °C	Outside Temp °C
	Solar W	Trans W							
1	54	-57	133	156	---	-285	---	38.8	16.6
2	54	-59	150	156	---	-300	---	38.6	15.3
3	54	-61	161	156	---	-310	---	38.4	14.3
4	54	-61	165	156	---	-313	---	38.1	13.7
5	63	-61	154	156	---	-312	---	37.8	13.5
6	74	-60	138	156	---	-308	---	37.8	13.9
7	84	-60	7	156	117	-304	---	38.7	15.1
8	92	-57	-25	156	117	-283	---	38.9	16.9
9	100	-59	-475	156	573	-294	---	42.1	19.2
10	106	-55	-515	156	573	-265	---	42.3	21.8
11	109	-51	-552	156	573	-235	---	42.6	24.3
12	111	-47	-584	156	573	-208	---	42.8	26.6
13	165	-45	-657	156	573	-191	---	43.3	28.4
14	243	-44	-742	156	573	-185	---	44.0	29.6
15	304	-44	-802	156	573	-186	---	44.5	30.0
16	338	-45	-829	156	573	-192	---	44.7	29.8
17	338	-44	-643	156	377	-183	---	43.4	29.2
18	289	-45	-585	156	377	-192	---	43.1	28.2
19	180	-46	-467	156	377	-199	---	42.4	26.9
20	54	-47	-331	156	377	-208	---	41.5	25.3
21	54	-50	-307	156	377	-229	---	41.4	23.6
22	54	-49	60	156	---	-221	---	38.9	21.8
23	54	-52	87	156	---	-244	---	38.9	19.9
24	54	-53	253	---	---	-253	---	37.9	18.2

Peak Summertime Temp	44.7 C at 16 hrs
Requested Peak Temp	23.0 C
Average Room Temp	40.9 C
Requested Infiltration	1.00 ac/h
Necessary Infiltration	Air Con Required

Summertime Temperatures for Room 101

NAME: L01-02

DATE: Jul 21

hr	Glazing		Fabric W	People W	Lights +Equip W	Infil. W	Mech. Vent W	Air Temp °C	Outside Temp °C
	Solar W	Trans W							
1	---	---	23	---	---	-23	---	21.5	16.6
2	---	---	28	---	---	-28	---	21.4	15.3
3	---	---	33	---	---	-33	---	21.3	14.3
4	---	---	35	---	---	-35	---	21.3	13.7
5	---	---	36	---	---	-36	---	21.3	13.5
6	---	---	34	---	---	-34	---	21.3	13.9
7	---	---	29	---	---	-29	---	21.4	15.1
8	---	---	21	---	---	-21	---	21.5	16.9
9	---	---	11	---	---	-11	---	21.6	19.2
10	---	---		---	---	---	---	21.8	21.8
11	---	---	-11	---	---	11	---	21.9	24.3
12	---	---	-21	---	---	21	---	22.0	26.6
13	---	---	-29	---	---	29	---	22.1	28.4
14	---	---	-34	---	---	34	---	22.2	29.6
15	---	---	-36	---	---	36	---	22.2	30.0
16	---	---	-35	---	---	35	---	22.2	29.8
17	---	---	-33	---	---	33	---	22.2	29.2
18	---	---	-28	---	---	28	---	22.1	28.2
19	---	---	-23	---	---	23	---	22.0	26.9
20	---	---	-16	---	---	16	---	21.9	25.3
21	---	---	-8	---	---	8	---	21.9	23.6
22	---	---		---	---	---	---	21.8	21.8
23	---	---	8	---	---	-8	---	21.6	19.9
24	---	---	16	---	---	-16	---	21.6	18.2

Peak Summertime Temp	22.2 C at 15 hrs
Requested Peak Temp	23.0 C
Average Room Temp	21.8 C
Requested Infiltration	1.00 ac/h
Necessary Infiltration	As Requested

Summertime Temperatures for Room 102

NAME: L01-03

DATE: Jul 21

hr	Glazing		Fabric W	People W	Lights +Equip W	Infil. W	Mech. Vent W	Air Temp °C	Outside Temp °C
	Solar W	Trans W							
1	85	-109	125	156	---	-257	---	43.8	16.6
2	85	-112	138	156	---	-267	---	43.6	15.3
3	85	-114	148	156	---	-275	---	43.4	14.3
4	85	-115	154	156	---	-279	---	43.3	13.7
5	252	-119	5	156	---	-293	---	44.6	13.5
6	421	-122	-152	156	---	-303	---	46.0	13.9
7	517	-123	-328	156	86	-307	---	47.6	15.1
8	548	-119	-376	156	86	-294	---	48.0	16.9
9	525	-123	-790	156	542	-308	---	51.9	19.2
10	456	-116	-757	156	542	-281	---	51.5	21.8
11	351	-108	-690	156	542	-250	---	50.9	24.3
12	223	-99	-600	156	542	-220	---	50.0	26.6
13	171	-94	-573	156	542	-201	---	49.7	28.4
14	165	-92	-578	156	542	-193	---	50.0	29.6
15	156	-91	-571	156	542	-191	---	50.3	30.0
16	144	-92	-556	156	542	-193	---	50.3	29.8
17	132	-89	-362	156	346	-182	---	48.5	29.2
18	117	-91	-336	156	346	-190	---	48.4	28.2
19	100	-94	-307	156	346	-200	---	48.1	26.9
20	85	-97	-277	156	346	-212	---	47.8	25.3
21	85	-101	-259	156	346	-226	---	47.6	23.6
22	85	-98	71	156	---	-214	---	44.4	21.8
23	85	-102	91	156	---	-229	---	44.3	19.9
24	85	-102	249	---	---	-231	---	42.7	18.2

Peak Summertime Temp	51.9 C at	9 hrs
Requested Peak Temp	23.0 C	
Average Room Temp	47.4 C	
Requested Infiltration	1.00 ac/h	
Necessary Infiltration	Air Con Required	

Summertime Temperatures for Room 104

NAME: L01-04

DATE: Jul 21

hr	Glazing		Fabric W	People W	Lights +Equip W	Infil. W	Mech. Vent W	Air Temp °C	Outside Temp °C
	Solar W	Trans W							
1	58	-38	88	---	---	-107	---	32.5	16.6
2	58	-40	98	---	---	-115	---	32.4	15.3
3	58	-41	105	---	---	-121	---	32.3	14.3
4	58	-42	109	---	---	-124	---	32.1	13.7
5	67	-42	101	---	---	-125	---	32.1	13.5
6	77	-42	88	---	---	-123	---	32.2	13.9
7	86	-40	71	---	---	-117	---	32.3	15.1
8	93	-38	50	---	---	-106	---	32.6	16.9
9	101	-34	26	---	---	-92	---	32.8	19.2
10	106	-31	1	---	---	-76	---	33.0	21.8
11	109	-27	-22	---	---	-61	---	33.3	24.3
12	111	-24	-40	---	---	-46	---	33.5	26.6
13	161	-22	-101	---	---	-38	---	34.1	28.4
14	234	-22	-176	---	---	-36	---	34.9	29.6
15	290	-22	-231	---	---	-37	---	35.5	30.0
16	322	-23	-259	---	---	-41	---	35.8	29.8
17	321	-24	-253	---	---	-45	---	35.8	29.2
18	277	-24	-204	---	---	-48	---	35.3	28.2
19	175	-25	-100	---	---	-50	---	34.2	26.9
20	58	-25	19	---	---	-52	---	33.0	25.3
21	58	-28	33	---	---	-63	---	32.9	23.6
22	58	-31	47	---	---	-75	---	32.8	21.8
23	58	-33	62	---	---	-86	---	32.7	19.9
24	58	-36	76	---	---	-98	---	32.6	18.2

Peak Summertime Temp	35.8 C at 16 hrs
Requested Peak Temp	23.0 C
Average Room Temp	33.4 C
Requested Infiltration	1.00 ac/h
Necessary Infiltration	Air Con Required

Summertime Temperatures for Room 200

NAME: L02-01a

DATE: Jul 21

hr	Glazing		Fabric W	People W	Lights +Equip W	Infil. W	Mech. Vent W	Air Temp °C	Outside Temp °C
	Solar W	Trans W							
1	57	-63	160	78	---	-232	---	35.8	16.6
2	57	-65	176	78	---	-246	---	35.6	15.3
3	57	-67	187	78	---	-255	---	35.4	14.3
4	57	-68	193	78	---	-260	---	35.2	13.7
5	90	-68	163	78	---	-262	---	35.1	13.5
6	109	-68	140	78	---	-259	---	35.3	13.9
7	112	-67	28	78	104	-255	---	36.1	15.1
8	107	-63	9	78	104	-234	---	36.2	16.9
9	117	-62	-235	78	332	-229	---	38.1	19.2
10	125	-57	-275	78	332	-202	---	38.5	21.8
11	129	-52	-311	78	332	-175	---	38.8	24.3
12	131	-48	-342	78	332	-151	---	39.0	26.6
13	185	-45	-414	78	332	-136	---	39.6	28.4
14	262	-44	-497	78	332	-130	---	40.4	29.6
15	321	-44	-554	78	332	-132	---	40.9	30.0
16	353	-45	-581	78	332	-137	---	41.1	29.8
17	349	-45	-482	78	234	-135	---	40.3	29.2
18	302	-46	-426	78	234	-142	---	39.9	28.2
19	195	-47	-312	78	234	-147	---	39.1	26.9
20	57	-48	-168	78	234	-153	---	38.0	25.3
21	57	-52	-145	78	234	-172	---	37.8	23.6
22	57	-52	91	78	---	-174	---	36.1	21.8
23	57	-56	116	78	---	-195	---	36.0	19.9
24	57	-58	209	---	---	-208	---	35.4	18.2

Peak Summertime Temp	41.1 C at 16 hrs
Requested Peak Temp	23.0 C
Average Room Temp	37.6 C
Requested Infiltration	1.00 ac/h
Necessary Infiltration	Air Con Required

Summertime Temperatures for Room 201

NAME: L02-01b

DATE: Jul 21

hr	Glazing		Fabric W	People W	Lights +Equip W	Infil. W	Mech. Vent W	Air Temp °C	Outside Temp °C
	Solar W	Trans W							
1	89	-62	122	78	---	-227	---	39.1	16.6
2	89	-64	136	78	---	-238	---	38.9	15.3
3	89	-66	146	78	---	-247	---	38.8	14.3
4	89	-67	152	78	---	-252	---	38.7	13.7
5	230	-69	26	78	---	-265	---	39.8	13.5
6	411	-71	-142	78	---	-276	---	41.3	13.9
7	558	-72	-345	78	64	-282	---	43.1	15.1
8	661	-71	-459	78	64	-274	---	44.0	16.9
9	722	-71	-744	78	292	-276	---	46.6	19.2
10	737	-67	-786	78	292	-254	---	46.9	21.8
11	708	-63	-787	78	292	-228	---	46.9	24.3
12	639	-58	-750	78	292	-201	---	46.5	26.6
13	166	-47	-343	78	292	-146	---	42.9	28.4
14	163	-46	-351	78	292	-136	---	43.1	29.6
15	157	-45	-347	78	292	-135	---	43.3	30.0
16	149	-46	-336	78	292	-138	---	43.5	29.8
17	142	-46	-232	78	194	-136	---	42.7	29.2
18	129	-47	-208	78	194	-146	---	42.6	28.2
19	112	-49	-178	78	194	-157	---	42.4	26.9
20	89	-52	-140	78	194	-169	---	42.1	25.3
21	89	-55	-122	78	194	-185	---	41.9	23.6
22	89	-55	72	78	---	-185	---	40.0	21.8
23	89	-57	90	78	---	-200	---	39.7	19.9
24	89	-59	177	---	---	-208	---	38.8	18.2

Peak Summertime Temp	46.9 C at 10 hrs
Requested Peak Temp	23.0 C
Average Room Temp	42.2 C
Requested Infiltration	1.00 ac/h
Necessary Infiltration	Air Con Required

Summertime Temperatures for Room 202

NAME: L02-02

DATE: Jul 21

hr	Glazing		Fabric W	People W	Lights +Equip W	Infil. W	Mech. Vent W	Air Temp °C	Outside Temp °C
	Solar W	Trans W							
1	38	-25	42	---	---	-55	---	33.0	16.6
2	38	-26	47	---	---	-59	---	32.8	15.3
3	38	-27	51	---	---	-62	---	32.7	14.3
4	38	-28	52	---	---	-63	---	32.4	13.7
5	44	-28	47	---	---	-63	---	32.3	13.5
6	50	-27	39	---	---	-62	---	32.4	13.9
7	56	-26	29	---	---	-59	---	32.5	15.1
8	61	-25	17	---	---	-53	---	32.7	16.9
9	65	-23	3	---	---	-46	---	33.0	19.2
10	69	-20	-10	---	---	-38	---	33.2	21.8
11	71	-18	-22	---	---	-31	---	33.4	24.3
12	72	-16	-32	---	---	-23	---	33.6	26.6
13	104	-15	-70	---	---	-19	---	34.2	28.4
14	150	-14	-117	---	---	-18	---	35.0	29.6
15	186	-15	-152	---	---	-19	---	35.7	30.0
16	206	-15	-170	---	---	-21	---	36.0	29.8
17	206	-16	-167	---	---	-23	---	36.0	29.2
18	177	-16	-137	---	---	-24	---	35.5	28.2
19	112	-16	-71	---	---	-25	---	34.4	26.9
20	38	-17	5	---	---	-26	---	33.2	25.3
21	38	-18	12	---	---	-32	---	33.1	23.6
22	38	-20	20	---	---	-38	---	33.1	21.8
23	38	-22	28	---	---	-44	---	33.1	19.9
24	38	-24	35	---	---	-50	---	33.0	18.2

Peak Summertime Temp	36.0 C at 16 hrs
Requested Peak Temp	23.0 C
Average Room Temp	33.6 C
Requested Infiltration	1.00 ac/h
Necessary Infiltration	Air Con Required

Summertime Temperatures for Room 203

NAME: L02-03a

DATE: Jul 21

hr	Glazing		Fabric W	People W	Lights +Equip W	Infil. W	Mech. Vent W	Air Temp °C	Outside Temp °C
	Solar W	Trans W							
1	61	-33	60	---	---	-88	---	34.5	16.6
2	61	-35	67	---	---	-93	---	34.3	15.3
3	61	-36	71	---	---	-97	---	34.1	14.3
4	61	-36	73	---	---	-98	---	33.8	13.7
5	77	-36	59	---	---	-99	---	33.7	13.5
6	88	-36	45	---	---	-98	---	33.8	13.9
7	97	-35	31	---	---	-93	---	34.0	15.1
8	102	-33	15	---	---	-85	---	34.2	16.9
9	107	-30	-3	---	---	-74	---	34.4	19.2
10	112	-27	-21	---	---	-63	---	34.6	21.8
11	114	-24	-38	---	---	-51	---	34.8	24.3
12	114	-22	-52	---	---	-41	---	35.0	26.6
13	438	-25	-360	---	---	-53	---	39.2	28.4
14	465	-24	-392	---	---	-49	---	39.7	29.6
15	465	-23	-394	---	---	-48	---	39.7	30.0
16	437	-23	-367	---	---	-47	---	39.4	29.8
17	380	-23	-310	---	---	-46	---	38.7	29.2
18	290	-23	-221	---	---	-46	---	37.6	28.2
19	168	-23	-101	---	---	-45	---	36.1	26.9
20	61	-23	7	---	---	-46	---	34.7	25.3
21	61	-25	18	---	---	-54	---	34.7	23.6
22	61	-27	29	---	---	-63	---	34.7	21.8
23	61	-30	40	---	---	-72	---	34.7	19.9
24	61	-32	51	---	---	-81	---	34.6	18.2

Peak Summertime Temp	39.7 C at 15 hrs
Requested Peak Temp	23.0 C
Average Room Temp	35.6 C
Requested Infiltration	1.00 ac/h
Necessary Infiltration	Air Con Required

Summertime Temperatures for Room 204

NAME: L02-03b

DATE: Jul 21

hr	Glazing		Fabric W	People W	Lights +Equip W	Infil. W	Mech. Vent W	Air Temp °C	Outside Temp °C
	Solar W	Trans W							
1	---	---	44	---	---	-44	---	27.3	16.6
2	---	---	49	---	---	-49	---	27.2	15.3
3	---	---	53	---	---	-53	---	27.1	14.3
4	---	---	55	---	---	-55	---	27.0	13.7
5	---	---	56	---	---	-56	---	27.0	13.5
6	---	---	54	---	---	-54	---	27.0	13.9
7	---	---	49	---	---	-49	---	27.0	15.1
8	---	---	42	---	---	-42	---	27.1	16.9
9	---	---	33	---	---	-33	---	27.2	19.2
10	---	---	23	---	---	-23	---	27.3	21.8
11	---	---	13	---	---	-13	---	27.4	24.3
12	---	---	4	---	---	-4	---	27.6	26.6
13	---	---	-3	---	---	3	---	27.7	28.4
14	---	---	-7	---	---	7	---	27.9	29.6
15	---	---	-8	---	---	8	---	28.1	30.0
16	---	---	-6	---	---	6	---	28.3	29.8
17	---	---	-3	---	---	3	---	28.4	29.2
18	---	---	1	---	---	-1	---	28.4	28.2
19	---	---	6	---	---	-6	---	28.4	26.9
20	---	---	12	---	---	-12	---	28.3	25.3
21	---	---	19	---	---	-19	---	28.2	23.6
22	---	---	26	---	---	-26	---	28.0	21.8
23	---	---	33	---	---	-33	---	27.8	19.9
24	---	---	39	---	---	-39	---	27.5	18.2

Peak Summertime Temp	28.4 C at 18 hrs
Requested Peak Temp	23.0 C
Average Room Temp	27.6 C
Requested Infiltration	1.00 ac/h
Necessary Infiltration	Air Con Required

Summary of Summertime Temperatures

No	Room Name	Desired		Necessary Infil ac/h	Max		Hours In Error
		Temp C	Infil ac/h		Temp C	Date	
1	L00-01a	23.0	1.00	Air Con Reqd	94.0	Jul 21	24
2	L00-01b	23.0	1.00	Air Con Reqd	67.3	Jul 21	24
3	L00-02	23.0	1.00	Air Con Reqd	44.8	Jul 21	24
4	L00-03	23.0	1.00	Air Con Reqd	33.4	Jul 21	24
5	L00-04	23.0	1.00	As Requested	22.0	Jul 21	---
100	L01-01	23.0	1.00	Air Con Reqd	44.7	Jul 21	24
101	L01-02	23.0	1.00	As Requested	22.2	Jul 21	---
102	L01-03	23.0	1.00	Air Con Reqd	51.9	Jul 21	24
104	L01-04	23.0	1.00	Air Con Reqd	35.8	Jul 21	24
200	L02-01a	23.0	1.00	Air Con Reqd	41.1	Jul 21	24
201	L02-01b	23.0	1.00	Air Con Reqd	46.9	Jul 21	24
202	L02-02	23.0	1.00	Air Con Reqd	36.0	Jul 21	24
203	L02-03a	23.0	1.00	Air Con Reqd	39.7	Jul 21	24
204	L02-03b	23.0	1.00	Air Con Reqd	28.4	Jul 21	24

The building contractor is to check the plan and all dimensions on site at quotation stage and report immediately to enable amended plans to be prepared. Any design changes required should be shown on the plan or any deviations from the design or materials specified, should comply with current building regulations, planning and other relevant legislation. The client should check any matters regarding title of the land and that work shown complies with all relevant covenants or encroachments on any boundaries, unless agreed. Procedures relating to The Party Wall Act 1994 should be followed. Works that commence before local authority approval has been obtained are undertaken solely at the owners/builders risk.

© Copyright reserved

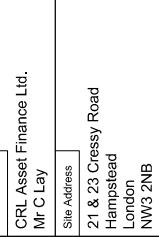
Revision notes
 Rev A: Basement shaft moved to rear.
 Rev B: Second-floor plan added.

Client:
 CRL Asset Finance Ltd.
 Mr C Lay

Site Address
 21 & 23 Cressy Road
 Hampstead
 London
 NW3 2NB

Project
 Re-development, extensions & alterations.

Drawing title
 Proposed Floor Plans, Site Location & Block Plans.



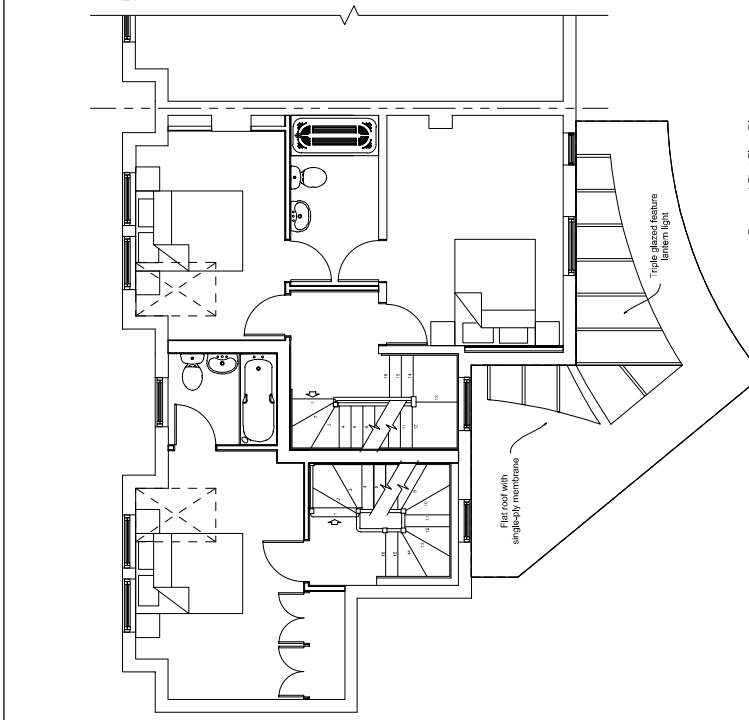
Drawings prepared for:
 Planning applications & S.A. and building regulations
 0 Lift conversions & structural alterations
 0 Domestic and commercial

The White House, 140-142, High Street, Uxbridge, Middlesex, Ux. UB8 3JH
 Email: info@lossetmorriskit.com
 Tel: +44(0) 1895 217904
 Mob: +44(0) 7794 138762

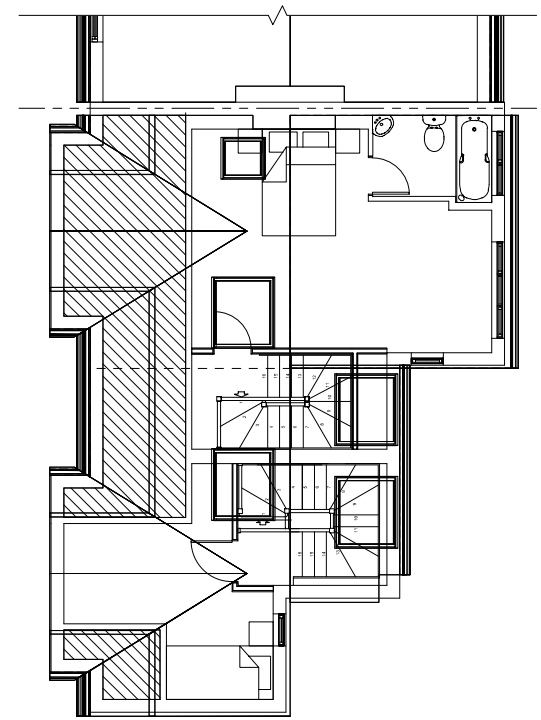


Drawing number: RM 13 / 139.33B
 Date: 23.01.2015
 Scale: Varies
 Drawn by: MPG
 Dwg size: A1

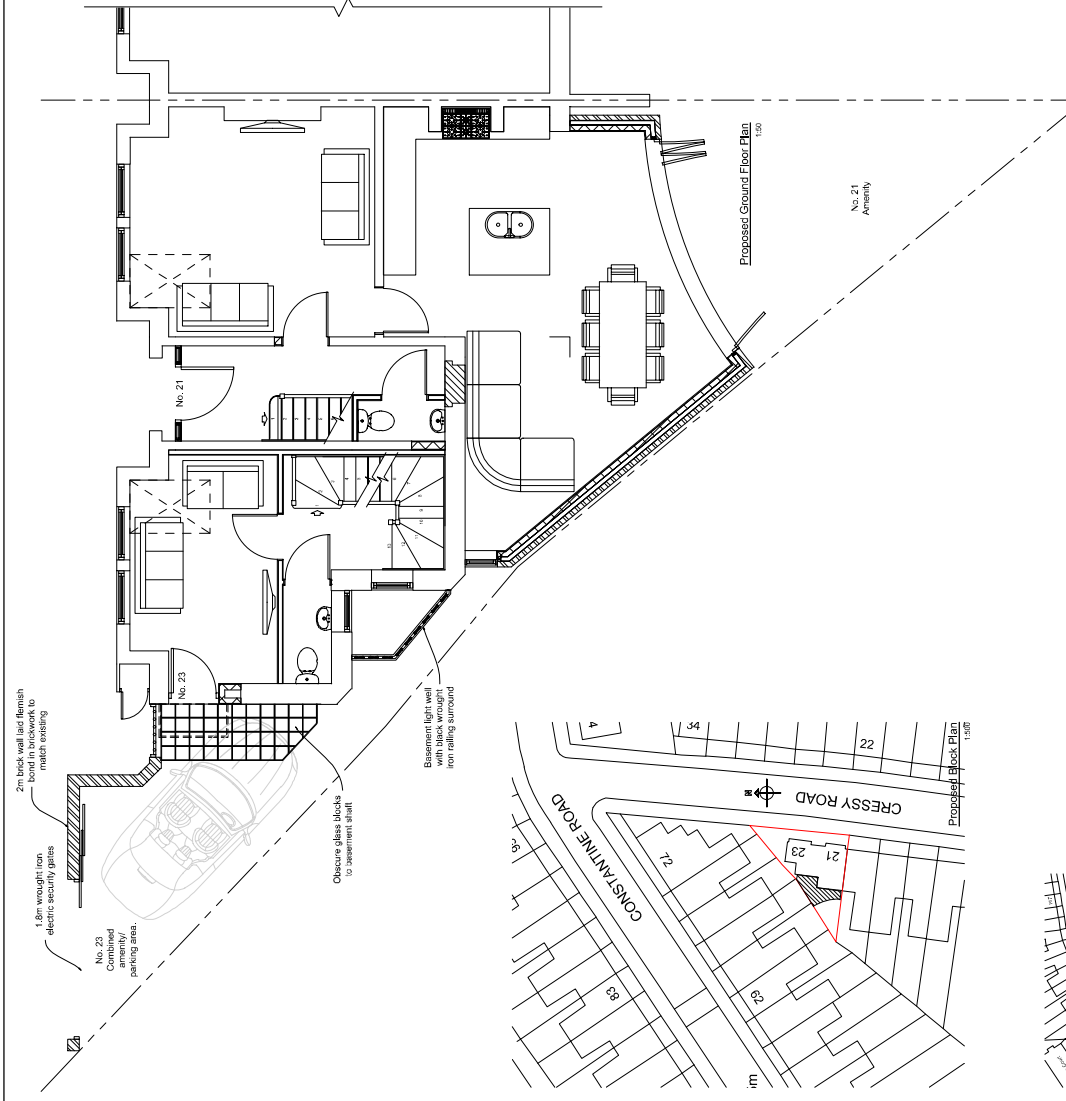
Registered Office: The White House, 140-142, High Street, Uxbridge, Middlesex, Ux. UB8 3JH.
 Registered in England No. 487106



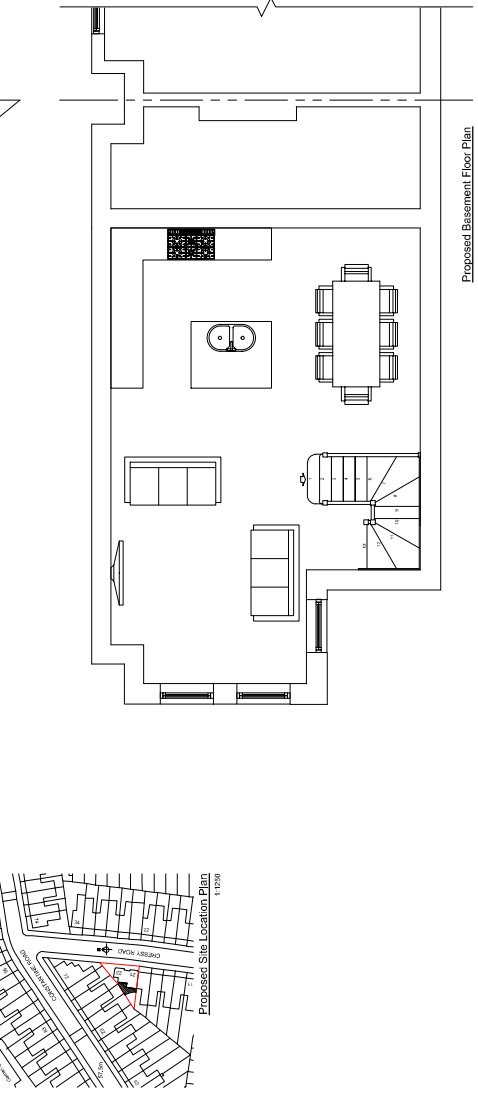
Proposed First Floor Plan 1:50



Proposed Second Floor Plan 1:50



Proposed Ground Floor Plan 1:50



Proposed Basement Floor Plan 1:50

2m black soft lead flash with 20mm lead on top panel, waterproof to match existing
 6.8m wrought iron electric security gates
 No. 25 Contained amenity/ parking area.
 Obscure glass blocks to basement shaft
 Basement light well with black wrought iron railing surround



Proposed Block Plan 1:50

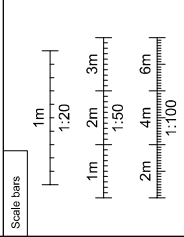


Proposed Site Location Plan 1:1250

The builder/contractor is to check the plan and all dimensions on site at quotation stage and report immediately to enable amended plans to be prepared. Any amendments to the plan shown on the plans or any deviations from the design or materials specified, should comply with current building regulations, planning Practice. The client should check any matters regarding title of the land and that work shown complies with any covenants or any boundaries, unless agreed. Procedures relating to The Party Wall Act 1994 should be followed. Works that commence before local authority approval has been obtained are undertaken solely at the owners/builders risk.

© Copyright reserved

Revision notes
Rev A. Notes added.



Client:
CRL Asset Finance Ltd.
Mr C Lay

Site Address
21 & 23 Cressy Road
Hampstead
London
NW3 2NB

Project
Redevelopment.

Drawing title
Proposed Elevations.

Drawings prepared for:
Planning purposes & building regulations
0.100 scale drawings for structural calculations
0.100 scale drawings for structural calculations
0.100 scale drawings for structural calculations
0.100 scale drawings for structural calculations

The Works shall be carried out in accordance with:
Local Planning Order, Book LUT 1/15
Local Planning Order, Book LUT 1/15
Local Planning Order, Book LUT 1/15
Local Planning Order, Book LUT 1/15

Email: info@jossetmorriscoruk.com
Tel: +44(0) 1525 279994
Mob: +44(0) 7794 138729

Drawing number: RM 12 / 176,14A
Date: 25.07.2013 Scale: 1:50
Drawn by: MFG Dwg Size: A1

Registered Office: The White House, Hockley Street,
Leigh-on-Sea, Essex, SSO 1 2LD.
Registered in England No. 4807108

