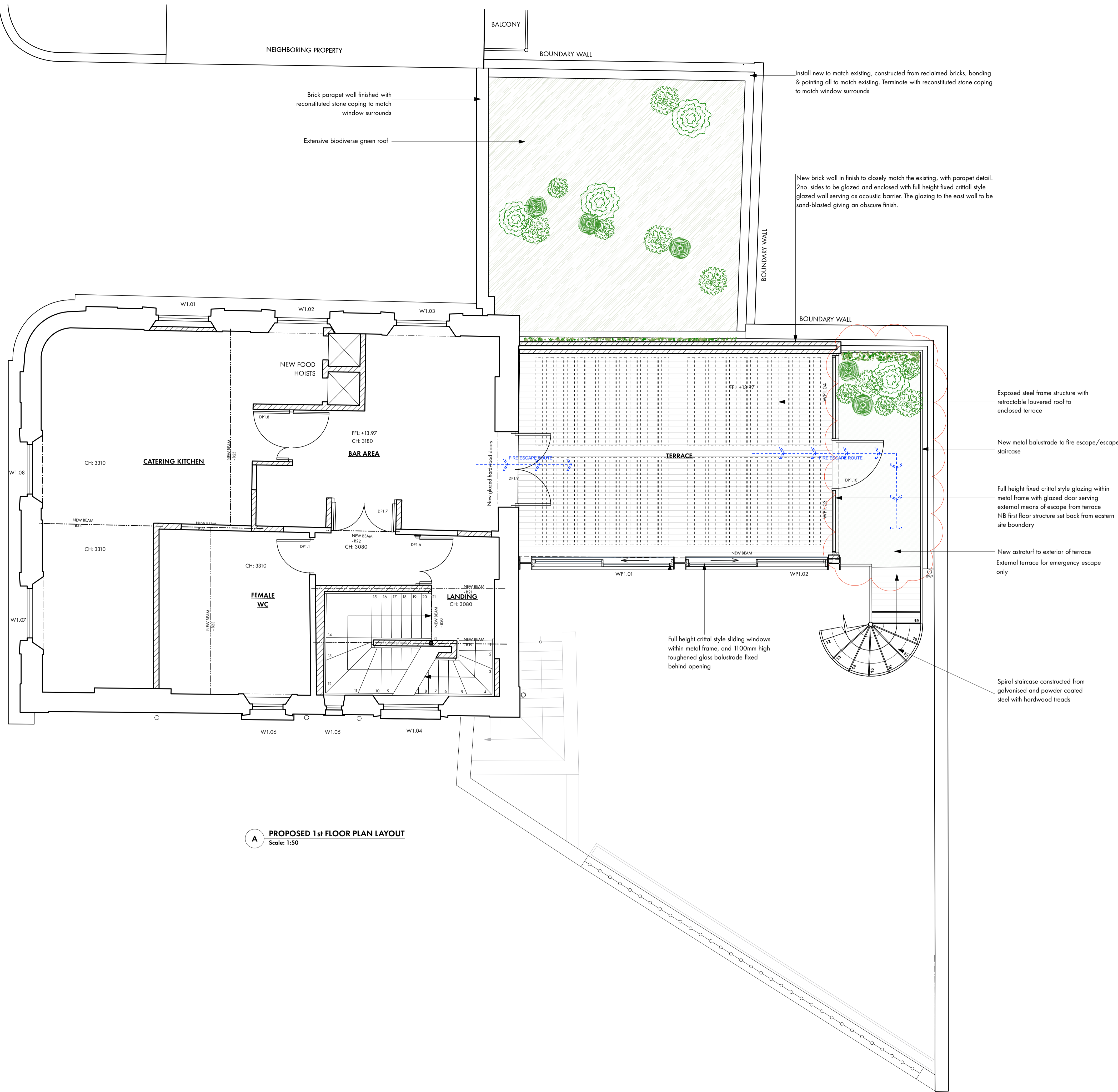


ELECTRICAL KEY	
	Power
	13a Twin Switched Socket Outlet (TS50)
	13a Single Switched Socket Outlet (SS50)
	20a Spur Socket Outlet
	Distribution Board
	Fixed Spur
	Shaver Socket
	Hand Dryer
	Lighting
	Switch
	Downlight
	Directional Spotlight
	Pendant
	Fixture Pendant
	Wall Bracket
	Picture Light
	Table Lamp
	Floor Lamp
	General Light Fitting
	Floor mounted LED uplighter
	Fluorescent Tube
	Bulkhead Fitting
	External Lantern
	External Wall Bracket
	Flood Light
	Trough Light
	External Illuminated Ballard
	Communications
	Telephone Point
	Entry Phone
	Aerial (TV)
	Speaker
	Audio/ Visual Connection
	Data point
	Wifi Access Point
FIRE & SECURITY KEY	
	Fire Detection & Alarm
	Smoke Detector
	Heat Detector
	Sounder
	Visual Indicator
	Call Point (Break glass)
	Fire Alarm Panel
	Internally illuminated Fire Exit Sign
	Emergency Light (Non-maintained)
	Emergency Light (Maintained)
	Directional Arrow Sign
	Secure Door in Open Position Sign
	Fire Exit Sign
	Fire Door FD30S
	Fire Door FD60S
	Magnetic hold-open connected to fire alarm
	Fire Extinguishers
	Water
	CO2
	Fire Blanket
	Class F (Wet Chemical)
	Dry Powder
	Foam
	Security
	CCTV Camera
	PIR Alarm sensor
	Door contacts connected to intruder alarm
	Panic Button
	Keypad
CONSTRUCTION KEY	
	New Walls
	Masonry - Brickwork
	Masonry - Blockwork
	Skid - Timber/ Metal, as noted below
	Ceilings
	Overhead feature e.g. beam/ rooflight/ etc.
	New beam
	Drainage & Mechanical
	Manhole
	Inspection Chamber
	Gully
	Drainage Channel
	Existing below ground drainage (assumed)
	New at 100mm below ground drainage run
	Soil Pipe (SVP or Stub Stack)
	Rain Water Pipe
	Water supply/ tap
	Radiator
	Extract/Supply Fan



A PROPOSED 1st FLOOR PLAN LAYOUT
Scale: 1:50

NOTES:		
Contractors must verify all dimensions on site before commencing any work. Figured dimensions to take precedence over scaled dimensions. Contractors must not scale from this drawing unless express instructions are given by Sampson Associates. The copyright of this drawing is reserved. The drawing must not be disclosed without authority.		
REV	DATE	AUTHOR/COMMENT
14	15.03.22	Reduce size of roof terrace enclosure, add obscure glazing to the rear (south) elevation and add planting to the green roof to the north of the terrace enclosure.
15	17.03.22	JS. Add planting to the fire exit landing to the extension
16	15.06.22	DD - Width of terrace reduced by 800mm. Parapet wall added to rear. WP1.05&06 omitted
17	16.06.22	DD - New opaque glass panel along terrace boundary wall. WP1.01 & 02 changed to sliding.
18	16.08.22	DD - 2m opaque glazing omitted around FF terrace. External terrace for escape only

