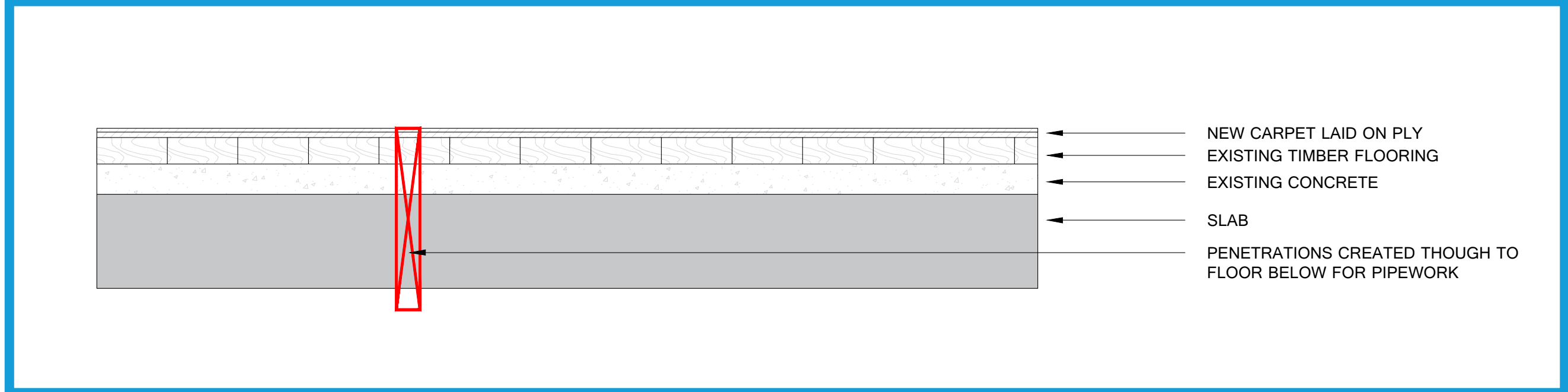
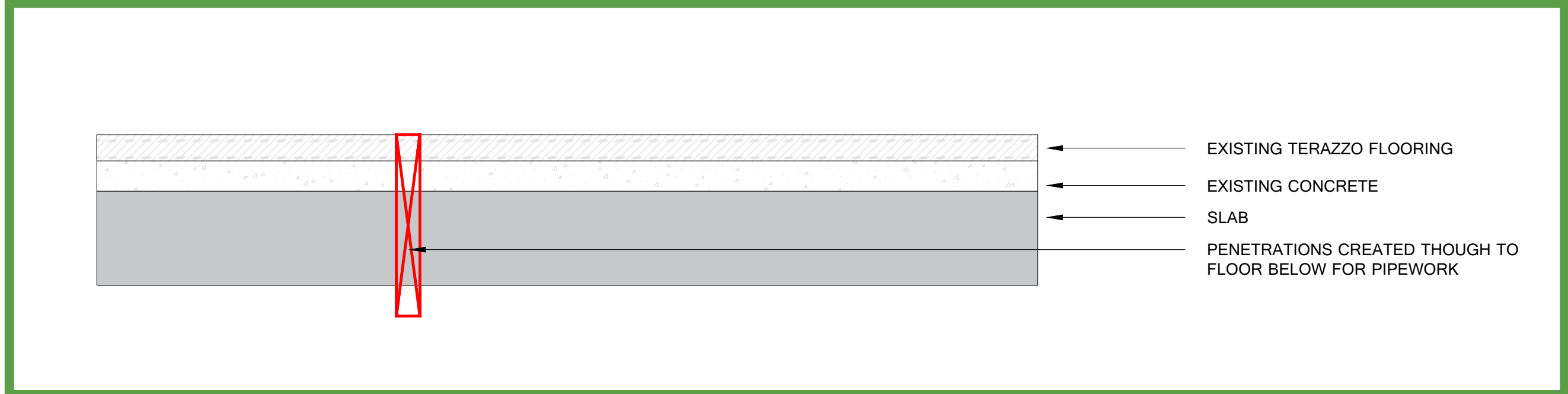
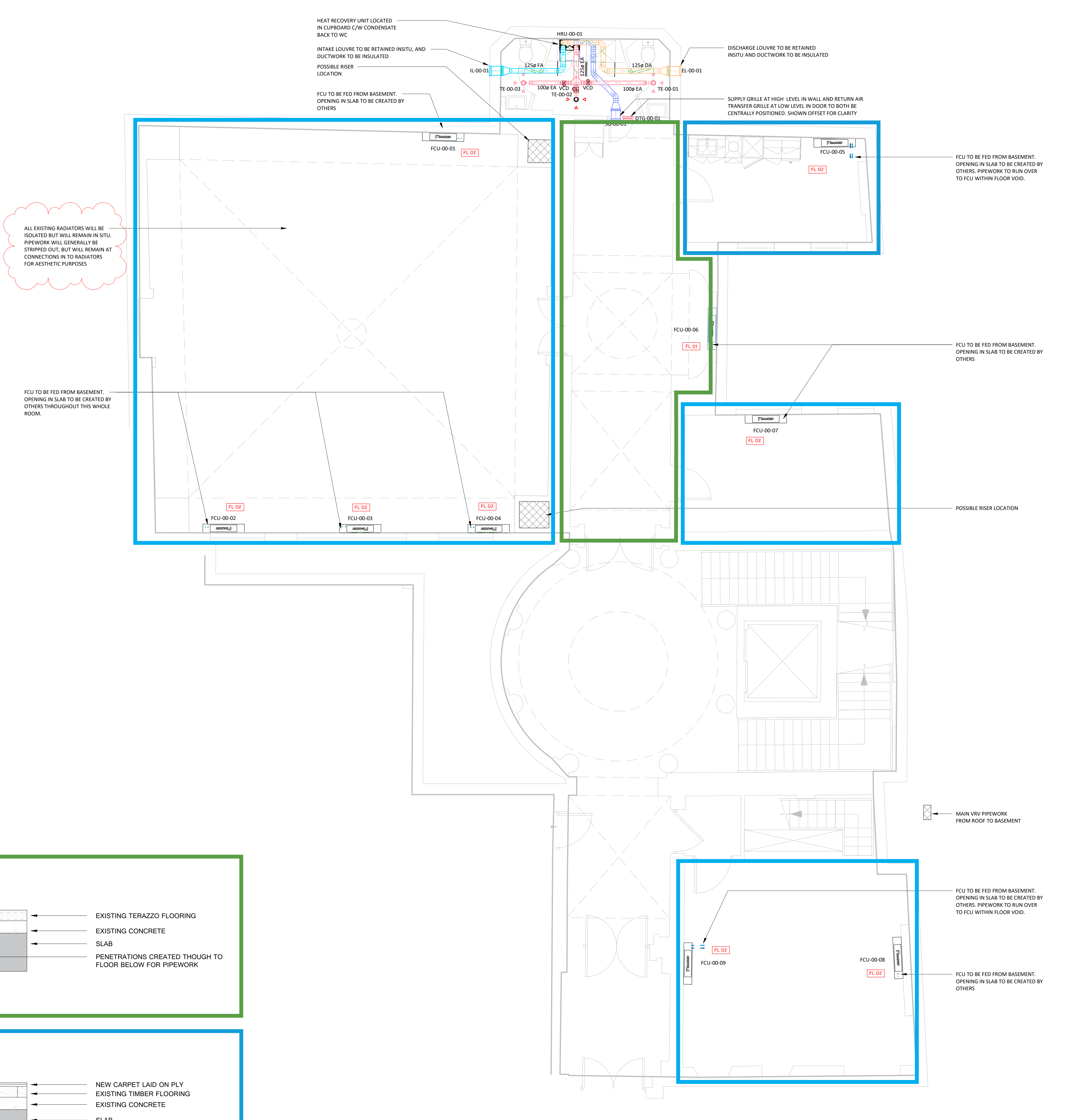


Mechanical Equipment Schedule - 00 Ground Floor			
Tag Number	Manufacturer	Type	Type Comments
Indoor unit			
FCU-00-01	Daikin Europe N.V. FXLQ40p2veb	Indoor unit	
FCU-00-02	Daikin Europe N.V. FXLQ40p2veb	Indoor unit	
FCU-00-03	Daikin Europe N.V. FXLQ40p2veb	Indoor unit	
FCU-00-04	Daikin Europe N.V. FXLQ40p2veb	Indoor unit	
FCU-00-05	Daikin Europe N.V. FXLQ40p2veb	Indoor unit	
FCU-00-06	Daikin Europe N.V. FXLQ40p2veb	Indoor unit	
FCU-00-07	Daikin Europe N.V. FXLQ40p2veb	Indoor unit	
FCU-00-08	Daikin Europe N.V. FXLQ40p2veb	Indoor unit	
FCU-00-09	Daikin Europe N.V. FXLQ40p2veb	Indoor unit	



- NOTES:
- BE BOX FOR ALL UNITS SERVING THIS GROUND FLOOR AREA TO BE LOCATED IN THE BASEMENT WITH PIPEWORK RISING FROM BELOW TO EACH UNIT.
 - PUMPED CONDENSATE DRAINAGE TO BE RUN WITH REFRIGERATION PIPEWORK, DOWN INTO THE BASEMENT WHERE IT WILL TERMINATE TO A LOCAL SYP.
 - ALL UNITS UNLESS OTHERWISE STATED ARE TO BE CENTRALLY CONTROLLED.
 - WHERE POSSIBLE, WE WILL USE EXISTING PENETRATIONS AVAILABLE FOLLOWING STRIP OUT OF EXISTING CENTRAL HEATING PIPEWORK

- LEGEND
- PIPEWORK AT LOW LEVEL TO BE BOXED IN (BY OTHERS)
 - PIPEWORK AT HIGH LEVEL / WITHIN CEILING VOID
 - PIPEWORK WITH FLOOR VOID.
 - POSSIBLE RISER LOCATION
 - BUILDERS WORK OPENING IN WALL

- EXISTING FLOORING INTERVENTION:
- EXISTING TERRAZZO FLOORING RETAINED WITH PENETRATIONS FOR PIPEWORK TO FLOOR BELOW
 - PENETRATIONS FOR PIPEWORK TO FLOOR BELOW THROUGH EXISTING TIMBER FLOORBOARDS. NEW FLOOR FINISH ON TOP

Revision Number	Revision Description	Revision Date
PD4	Revised To Suit Comments. Re-issued For Approval.	13.04.22
P03	Drawings Issued For Approval	07.04.22
P02	Revised To Suit Site Survey And Comments	31.00.22
P01	For Approval.	10.03.22

Revision Schedule		
Revision Number	Revision Description	Revision Date

Related Specification
This drawing is to be read in conjunction with specification

Related Drawings



Towers Point,
Towers Business Park,
Rugeley, Staffordshire
WS15 1UN
T: 0203 301 5803
cad@celsius-group.co.uk

Scale: 1:50@AD Date: 13.04.22

Designed: RB CAD: JA Checked: RB

Client: Dthree

Site Location:
Holborn Town Hall
193 - 197 High Holborn,
London
WC1V 7BD

Title:
MECHANICAL SERVICES GROUND FLOOR

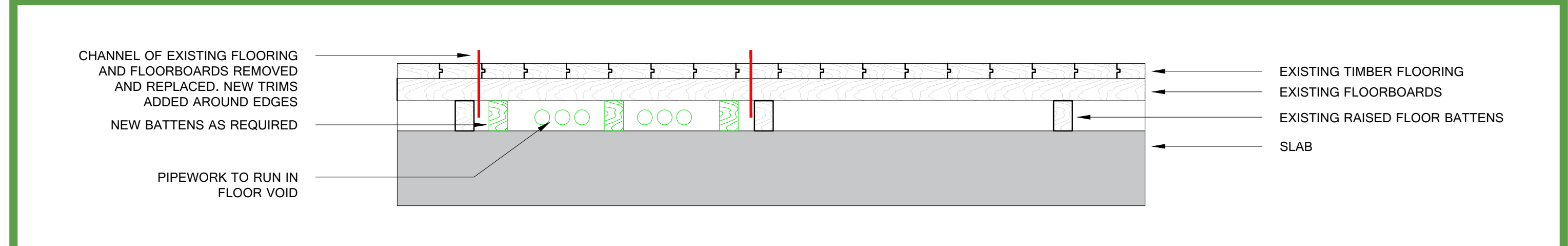
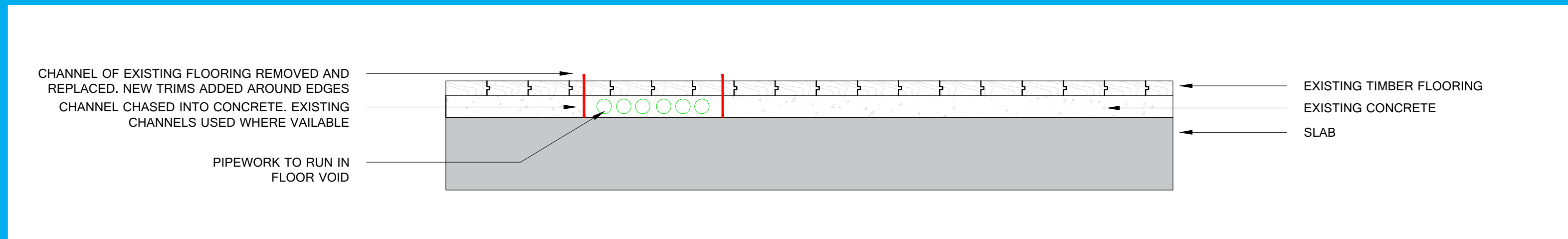
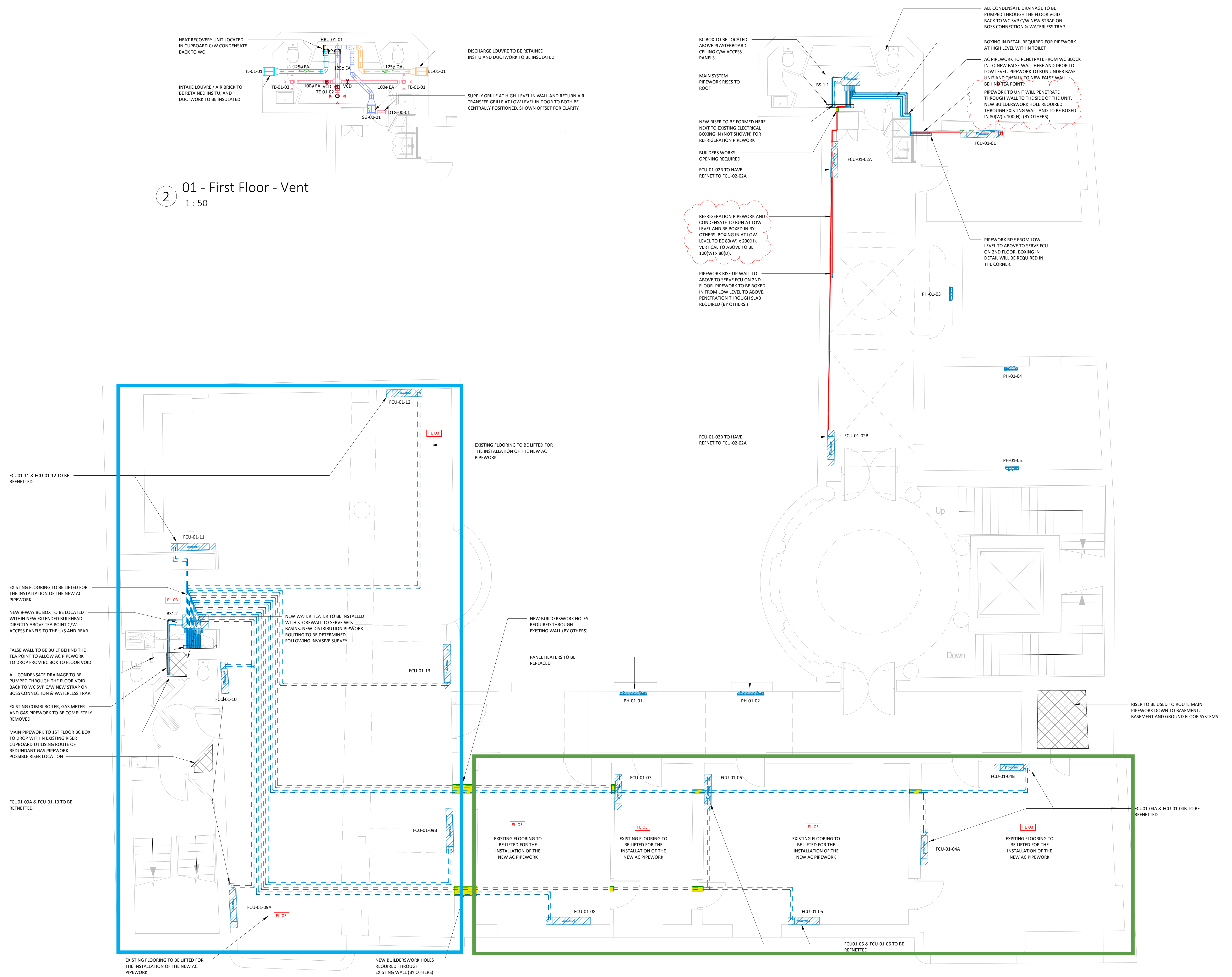
Drawing No: 317522-CEL-XX-00-DR-M-5001 Revision: PD4

This drawing is confidential and is the copyright property of the company. It must not be disclosed, loaned or copied without written permission.

Autodesk Docs/317522 - Dthree - Town Hall Holborn/317522-CEL-XX-00-DR-M-5001.rvt

TagNumber	Manufacturer	Type	Type Comments
FCU-01-01	Daikin Europe N.V.	FXLQ32veb	Indoor unit
FCU-01-02A	Daikin Europe N.V.	FXLQ402veb	Indoor unit
FCU-01-02B	Daikin Europe N.V.	FXLQ402veb	Indoor unit
FCU-01-04A	Daikin Europe N.V.	FXLQ402veb	Indoor unit
FCU-01-04B	Daikin Europe N.V.	FXLQ402veb	Indoor unit
FCU-01-05	Daikin Europe N.V.	FXLQ32veb	Indoor unit
FCU-01-06	Daikin Europe N.V.	FXLQ32veb	Indoor unit
FCU-01-07	Daikin Europe N.V.	FXLQ32veb	Indoor unit
FCU-01-08	Daikin Europe N.V.	FXLQ32veb	Indoor unit
FCU-01-09A	Daikin Europe N.V.	FXLQ32veb	Indoor unit
FCU-01-09B	Daikin Europe N.V.	FXLQ32veb	Indoor unit
FCU-01-10	Daikin Europe N.V.	FXLQ32veb	Indoor unit
FCU-01-11	Daikin Europe N.V.	FXLQ32veb	Indoor unit
FCU-01-12	Daikin Europe N.V.	FXLQ402veb	Indoor unit
FCU-01-13	Daikin Europe N.V.	FXLQ32veb	Indoor unit

2 01 - First Floor - Vent
1 : 50



- NOTES:
- SPLIT SYSTEMS NOT REQUIRED AT ALL ON THIS FLOOR.
 - PIPEWORK INSTALLATION ROUTES ARE ALL DEPENDENT ON WHETHER THIRWAY WILL LIFT UP THE EXISTING FLOOR.
 - WHERE WE BELIEVE THE FLOORING CANNOT BE LIFTED DUE TO IT BEING A MARBLE FINISH, ALL PIPEWORK WILL BE ROUTED AROUND THE PERIMETER WALLS AND WILL NEED TO BE BOXED IN. WE HAVE IDENTIFIED THESE LOCATIONS ON THE DRAWING.
 - PUMPED CONDENSATE DRAINAGE TO BE RUN WITH REFRIGERATION PIPEWORK

- LEGEND
- PIPEWORK AT LOW LEVEL TO BE BOXED IN (BY OTHERS)
 - PIPEWORK AT HIGH LEVEL / WITHIN CEILING VOID
 - PIPEWORK WITH FLOOR VOID
 - ⊗ POSSIBLE RISER LOCATION
 - BUILDERS WORK OPENING IN WALL

- EXISTING FLOORING INTERVENTION:
- FL 01 EXISTING EXPOSED TIMBER FLOORBOARDS LIFTED AND REPLACED, FINISH RETAINED

Revision Number	Revision Description	Revision Date
P05	Revised To Suit Comments. Re-issued For Approval.	13.04.22
P04	Drawings Issued For Approval	07.04.22
P03	Revised To Suit Site Survey And Comments	31.03.22
P02	FCU limited.	14.03.22
P01	For Approval.	10.03.22

Related Specification
This drawing is to be read in conjunction with specification

Related Drawings



Towers Point,
Towers Business Park,
Rugeley, Staffordshire
WS15 1UN
T: 0203 301 5803
cad@celsius-group.co.uk

Scale: 1 : 50@A0 Date: 13.04.22

Designed: RB CAD: JA Checked: RB

Client: Dthree

Site Location:
Holborn Town Hall
193 - 197 High Holborn,
London
WC1V 7BD

Title:
MECHANICAL SERVICES FIRST FLOOR

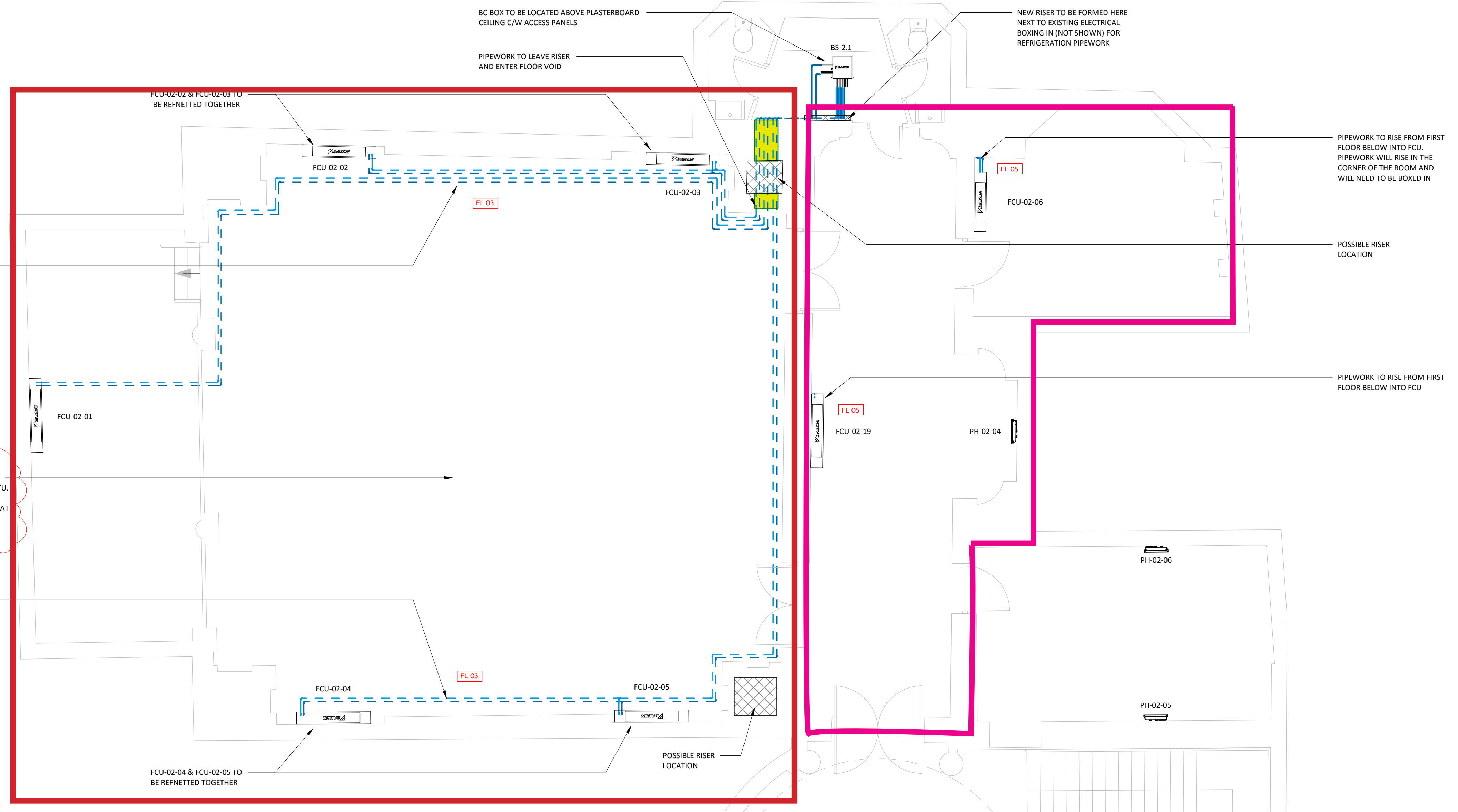
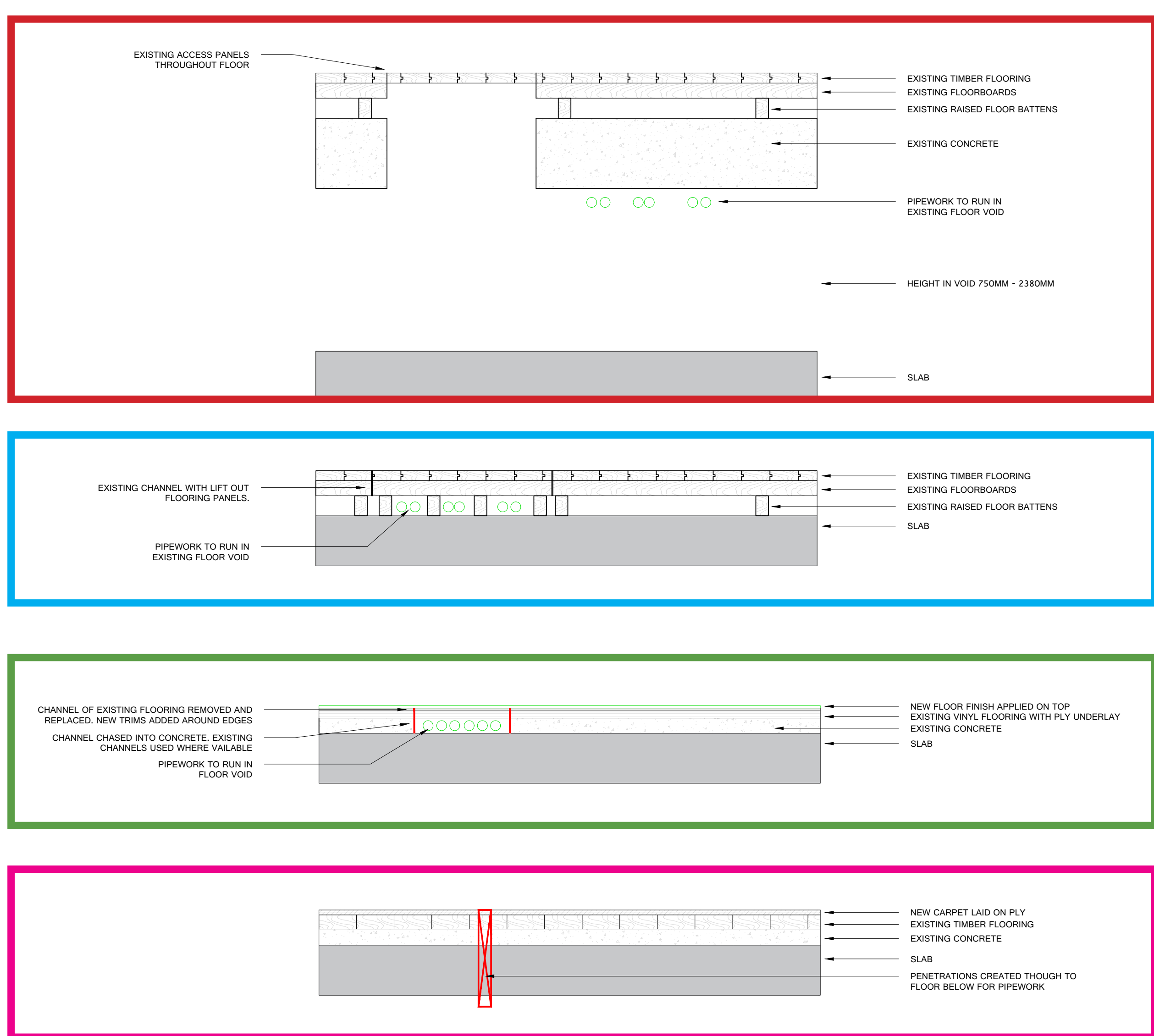
Drawing No: 317522-CEL-XX-01-DR-M-5001 Revision: P05

This drawing is confidential and is the copyright property of the company. It must not be disclosed, loaned or copied without written permission.

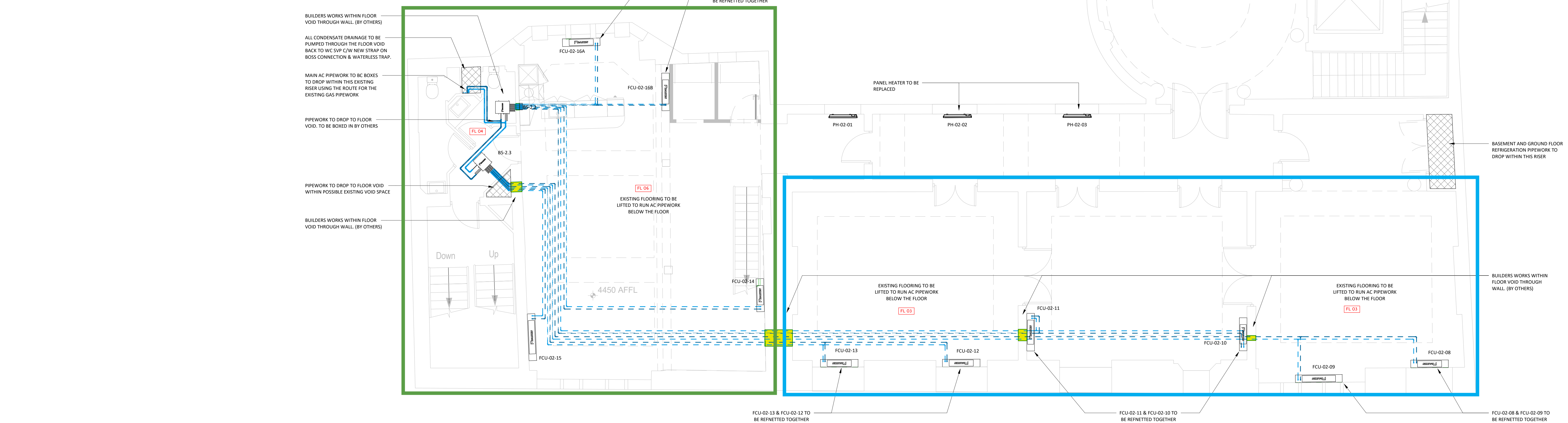
Autodesk Docs/317522 - Dthree - Town Hall/Holborn/317522-CEL-XX-01-DR-M-5001.rvt

Mechanical Equipment Schedule - 02 Second Floor				
Tag Number	Manufacturer	Type	Type	Comments
Indoor unit				
FCU-02-01	Daikin Europe N.V.	FALQ632veb	Indoor unit	
FCU-02-02	Daikin Europe N.V.	FALG502veb	Indoor unit	
FCU-02-03	Daikin Europe N.V.	FALG502veb	Indoor unit	
FCU-02-04	Daikin Europe N.V.	FALG502veb	Indoor unit	
FCU-02-05	Daikin Europe N.V.	FALG502veb	Indoor unit	
FCU-02-06	Daikin Europe N.V.	FALQ402veb	Indoor unit	
FCU-02-08	Daikin Europe N.V.	FALQ402veb	Indoor unit	
FCU-02-09	Daikin Europe N.V.	FALG502veb	Indoor unit	
FCU-02-10	Daikin Europe N.V.	FALQ252veb	Indoor unit	
FCU-02-11	Daikin Europe N.V.	FALG332veb	Indoor unit	
FCU-02-12	Daikin Europe N.V.	FALG332veb	Indoor unit	
FCU-02-13	Daikin Europe N.V.	FALG332veb	Indoor unit	
FCU-02-14	Daikin Europe N.V.	FALG252veb	Indoor unit	
FCU-02-15	Daikin Europe N.V.	FALG382veb	Indoor unit	
FCU-02-16A	Daikin Europe N.V.	FALQ402veb	Indoor unit	
FCU-02-16B	Daikin Europe N.V.	FALQ402veb	Indoor unit	
FCU-02-19	Daikin Europe N.V.	FALG502veb	Indoor unit	

- NOTES:
- PLUMBED CONDENSATE DRAINAGE TO BE RUN WITH REFRIGERATION PIPEWORK
 - NO ALLOWANCE FOR MODIFICATIONS ON THE VENTILATION FOR THIS FLOOR. VENTILATION TO BE SURVEYED AND VALIDATED ONCE ON SITE AND ACCESSIBLE.
- LEGEND:
- PIPEWORK AT LOW LEVEL TO BE BOXED IN (BY OTHERS)
 - PIPEWORK AT HIGH LEVEL / WITHIN CEILING VOID
 - PIPEWORK WITH FLOOR VOID.
 - POSSIBLE RISE LOCATION
 - BUILDERS WORK OPENING IN WALL



- EXISTING FLOORING INTERVENTION:
- FL 03 EXISTING EXPOSED TIMBER FLOORBOARDS LIFTED AND REPLACED. FINISH RETAINED
 - FL 04 EXISTING TIMBER FLOORBOARDS LIFTED AND REPLACED. NEW FLOOR FINISH ON TOP
 - FL 05 PENETRATIONS FOR PIPEWORK TO FLOOR BELOW THROUGH EXISTING TIMBER FLOORBOARDS. FINISH RETAINED
 - FL 06 EXISTING TIMBER FLOORBOARDS LIFTED AND REPLACED. FINISH RETAINED



Revision Number	Revision Description	Revision Date
P04	Revised To Suit Comments. Re-issued For Approval.	13.04.22
P03	Drawings Issued For Approval	07.04.22
P02	Revised To Suit Site Survey And Comments For Approval.	31.03.22
P01	For Approval.	30.03.22

Related Specification
This drawing is to be read in conjunction with specification

Related Drawings



Towers Point,
Towers Business Park,
Rugeley, Staffordshire
WS15 1UN
T: 0203 301 5803
cad@celsius-group.co.uk

Scale 1: 50@A0	Date 13.04.22	
Designed RB	CAD JA	Checked RB

Client
Dthree

Site Location
Holborn Town Hall
193 - 197 High Holborn,
London
WC1V 7BD

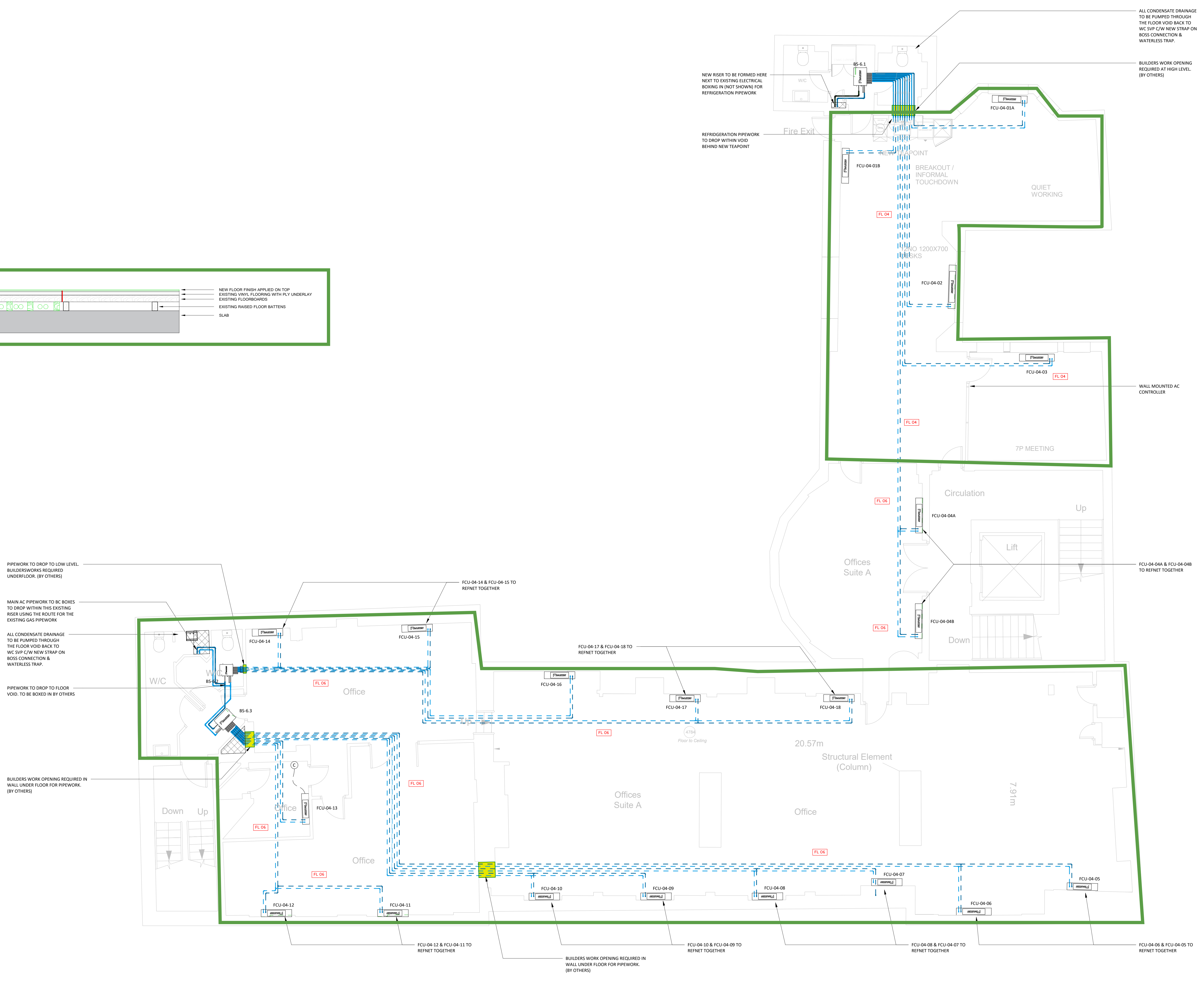
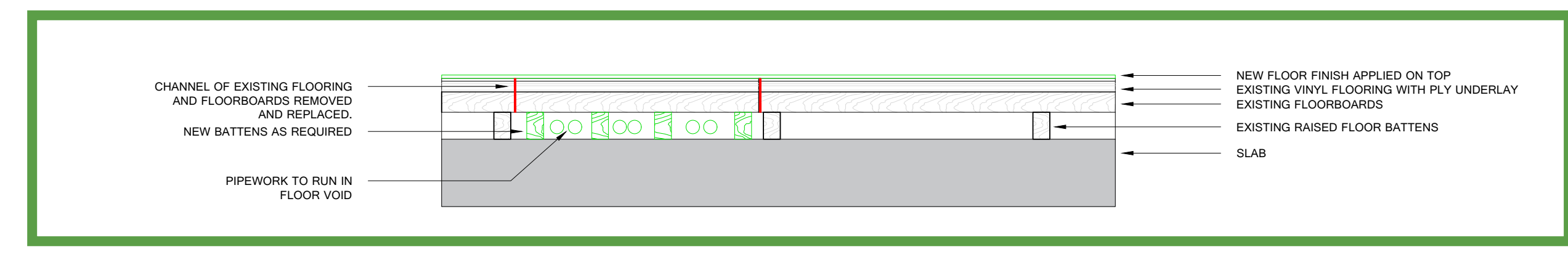
Title
MECHANICAL SERVICES SECOND FLOOR

Drawing No 317522-CEL-XX-02-DR-M-5001	Revision P04
--	-----------------

This drawing is confidential and is the copyright property of the company. It must not be disclosed, loaned or copied without written permission.

Autodesk Docs/317522 - Dthree - Town Hall/Holborn/317522-CEL-XX-02-DR-M-5001.rvt

Mechanical Equipment Schedule - 04 Fourth Floor			
TagNumber	Manufacturer	Type	Type Comments
Indoor unit			
FCU-04-01A	Daikin Europe N.V.	FXLQ402veb	Indoor unit
FCU-04-01B	Daikin Europe N.V.	FXLQ402veb	Indoor unit
FCU-04-02	Daikin Europe N.V.	FXLQ402veb	Indoor unit
FCU-04-03	Daikin Europe N.V.	FXLQ402veb	Indoor unit
FCU-04-04A	Daikin Europe N.V.	FXLQ402veb	Indoor unit
FCU-04-04B	Daikin Europe N.V.	FXLQ402veb	Indoor unit
FCU-04-05	Daikin Europe N.V.	FXLQ202veb	Indoor unit
FCU-04-06	Daikin Europe N.V.	FXLQ322veb	Indoor unit
FCU-04-07	Daikin Europe N.V.	FXLQ202veb	Indoor unit
FCU-04-08	Daikin Europe N.V.	FXLQ202veb	Indoor unit
FCU-04-09	Daikin Europe N.V.	FXLQ202veb	Indoor unit
FCU-04-10	Daikin Europe N.V.	FXLQ202veb	Indoor unit
FCU-04-11	Daikin Europe N.V.	FXLQ202veb	Indoor unit
FCU-04-12	Daikin Europe N.V.	FXLQ202veb	Indoor unit
FCU-04-13	Daikin Europe N.V.	FXLQ202veb	Indoor unit
FCU-04-14	Daikin Europe N.V.	FXLQ202veb	Indoor unit
FCU-04-15	Daikin Europe N.V.	FXLQ202veb	Indoor unit
FCU-04-16	Daikin Europe N.V.	FXLQ202veb	Indoor unit
FCU-04-17	Daikin Europe N.V.	FXLQ202veb	Indoor unit
FCU-04-18	Daikin Europe N.V.	FXLQ202veb	Indoor unit



- NOTES:
- ALL CONDENSATE TO BE PUMPED AND RUN WITH REFRIGERATION PIPEWORK BACK TO SVP WITHIN WC BLOCK
 - NO ALLOWANCE FOR MODIFICATIONS ON THE VENTILATION FOR THIS FLOOR. VENTILATION TO BE SURVEYED AND VALIDATED ONCE ON SITE AND ACCESSIBLE.
- LEGEND
- PIPEWORK AT LOW LEVEL TO BE BOXED IN (BY OTHERS)
 - PIPEWORK AT HIGH LEVEL / WITHIN CEILING VOID
 - PIPEWORK WITH FLOOR VOID.
 - POSSIBLE RISE LOCATION
 - BUILDERS WORK OPENING IN WALL

EXISTING FLOORING INTERVENTION:	
FL 04	EXISTING TIMBER FLOORBOARDS LIFTED AND REPLACED, NEW FLOOR FINISH ON TOP
FL 04	EXISTING TIMBER FLOORBOARDS LIFTED AND REPLACED, FINISH RETAINED

Revision Number	Revision Description	Revision Date
P03	Drawings Issued For Approval	07.04.22
P02	Revised To Suit Site Survey And Comments	31.03.22
P01	For Approval.	30.03.22

Revision Schedule

Related Specification

This drawing is to be read in conjunction with specification

Related Drawings



Towers Point,
Towers Business Park,
Rugeley, Staffordshire
WS15 1UN
T: 0203 301 5803
cad@celsius-group.co.uk

Scale: 1:50@A0 Date: 07.04.22

Designed	CAD	Checked
RB	JA	RB

Client: Dthree

Site Location:
Holborn Town Hall
193 - 197 High Holborn,
London
WC1V 7BD

Title: MECHANICAL SERVICES FOURTH FLOOR

Drawing No	Revision
317522-CEL-XX-04-DR-M-5001	P03

This drawing is confidential and is the copyright property of the company. It must not be disclosed, loaned or copied without written permission.

Autodesk Docs/317522 - Dthree - Town Hall/Holborn/317522-CEL-XX-04-DR-M-5001.rvt

Mechanical Equipment Schedule - 05 Fifth Floor

TagNumber	Manufacturer	Type	Type Comments
-----------	--------------	------	---------------

Indoor unit			
FCU-05-01	Daikin Europe N.V.	FXLQ50p2veb	Indoor unit
FCU-05-02	Daikin Europe N.V.	FXLQ40p2veb	Indoor unit
FCU-05-03	Daikin Europe N.V.	FXLQ40p2veb	Indoor unit
FCU-05-04	Daikin Europe N.V.	FXLQ50p2veb	Indoor unit

NOTES:

- PUMPED CONDENSATE DRAINAGE TO BE RUN WITH REFRIGERATION PIPEWORK UNDER FLOOR, VIA BRAIDED HOSES BACK TO SVP WITHIN 4TH FLOOR WC BLOCK.
- NO ALLOWANCE FOR MODIFICATIONS ON THE VENTILATION FOR THIS FLOOR. VENTILATION TO BE SURVEYED AND VALIDATED ONCE ON SITE AND ACCESSIBLE.

LEGEND

- PIPEWORK AT LOW LEVEL TO BE BOXED IN (BY OTHERS)
- PIPEWORK AT HIGH LEVEL / WITHIN CEILING VOID
- PIPEWORK WITH FLOOR VOID.
- POSSIBLE RISE LOCATION
- BUILDERS WORK OPENING IN WALL

EXISTING FLOORING INTERVENTION:

FL 06 EXISTING TIMBER FLOORBOARDS LIFTED AND REPLACED. FINISH RETAINED

Revision Number	Revision Description	Revision Date
P03	Drawings Issued For Approval	07.04.22
P02	Revised To Suit Site Survey And Comments	31.00.22
P01	For Approval.	10.03.22

Revision Schedule		
-------------------	--	--

Related Specification
This drawing is to be read in conjunction with specification:

Related Drawings



Towers Point
Towers Business Park
Rugeley - Staffordshire
WS15 1UN
T: 0203 301 5803
cad@celsius-group.co.uk

Scale	Date
1 : 50@A1	03/09/22

Designed	CAD	Checked
RB	JA	RB

Client
Dthree

Site Location
Holborn Town Hall
193 - 197 High Holborn,
London
WC1V 7BD

Title
MECHANICAL SERVICES
FIFTH FLOOR

Drawing No	Revision
317522-CEL-XX-05-DR-M-5001	P03

This drawing is confidential and is the copyright property of the company. It must not be disclosed loaned or copied without written permission.

