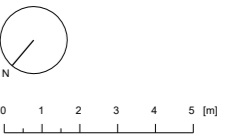
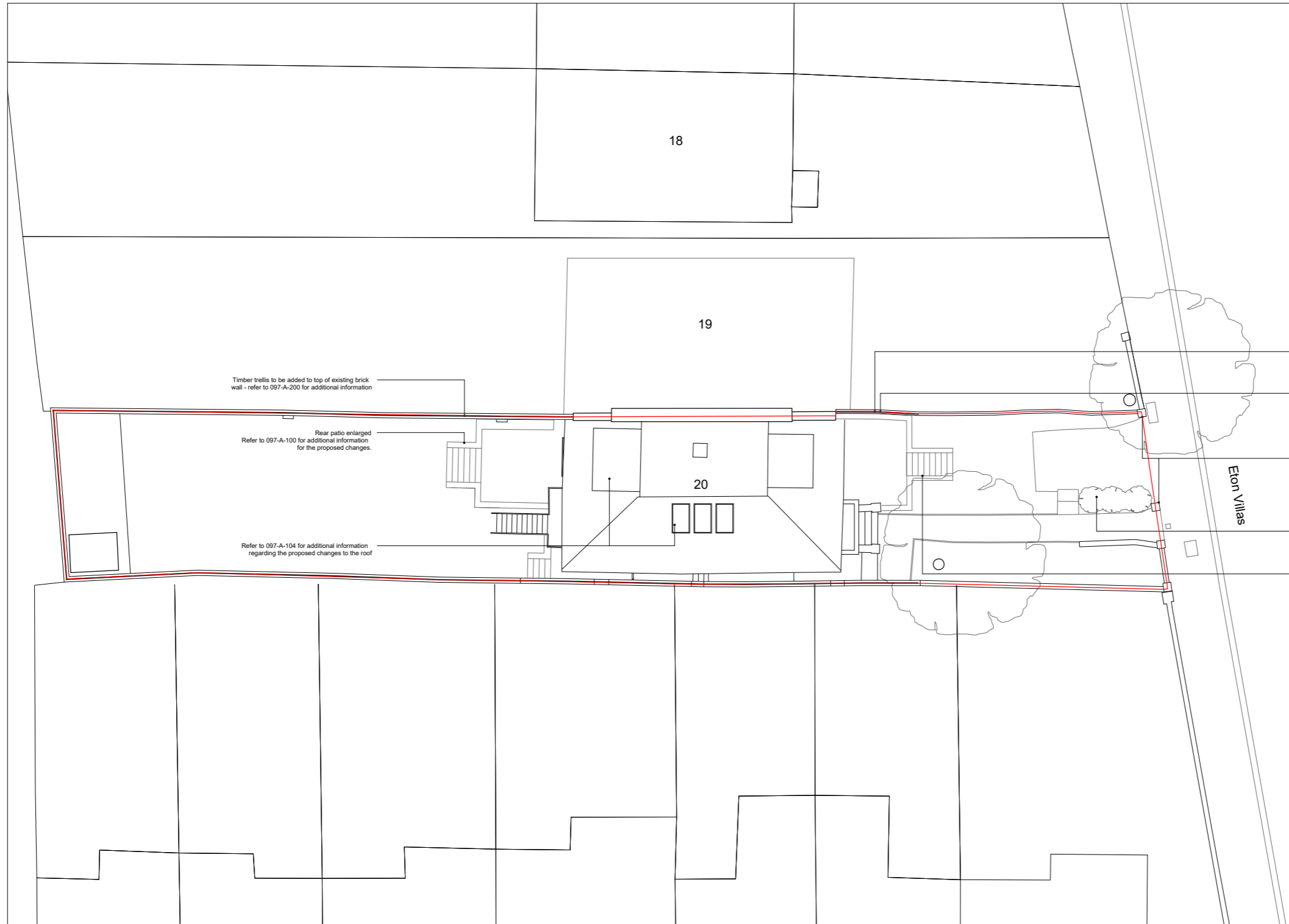


Issued
 / 23.11.21 Issued for planning
 A 24.02.22 Amended for planning
 B 08.07.22 Amended for planning
 C 18.07.22 Amended for planning
 D 10.07.22 Amended for planning8

Notes
 Existing
 Proposed
 Site boundary



20 Eton Villas
 Proposed

097-A-001



Site Plan	
24.02.22	1:200 @ A3
RC	MC

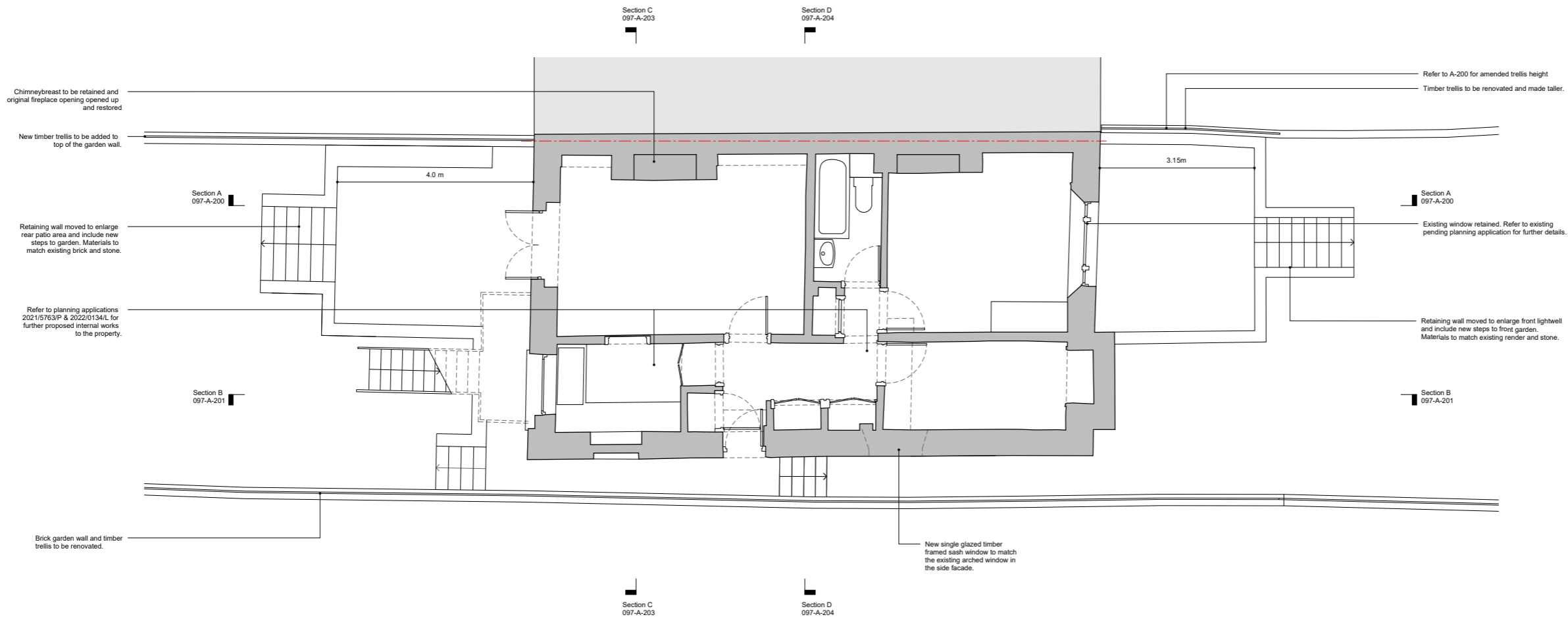
HESSELBRAND

© Hesselbrand Ltd. All rights described in Chapter IV of the Copyright, Designs and Patents Act 1988 have been asserted. The drawing is to be read in conjunction with specifications and all relevant drawings. Contractor to check all dimensions on site. Do not scale from this drawing. Hesselbrand Ltd is to be advised of any variation between the drawings and the site conditions.

Issued	/ 23.11.21	Issued for planning
A	24.02.22	Amended for planning
B	08.07.22	Amended for planning
C	18.07.22	Amended for planning
D	10.07.22	Amended for planning8

Notes

	Existing
	Proposed



20 Eton Villas

Proposed

097-A-100

Lower Ground Floor Plan

24.02.22 | 1:100 @ A3

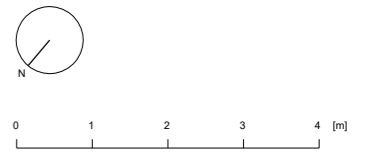
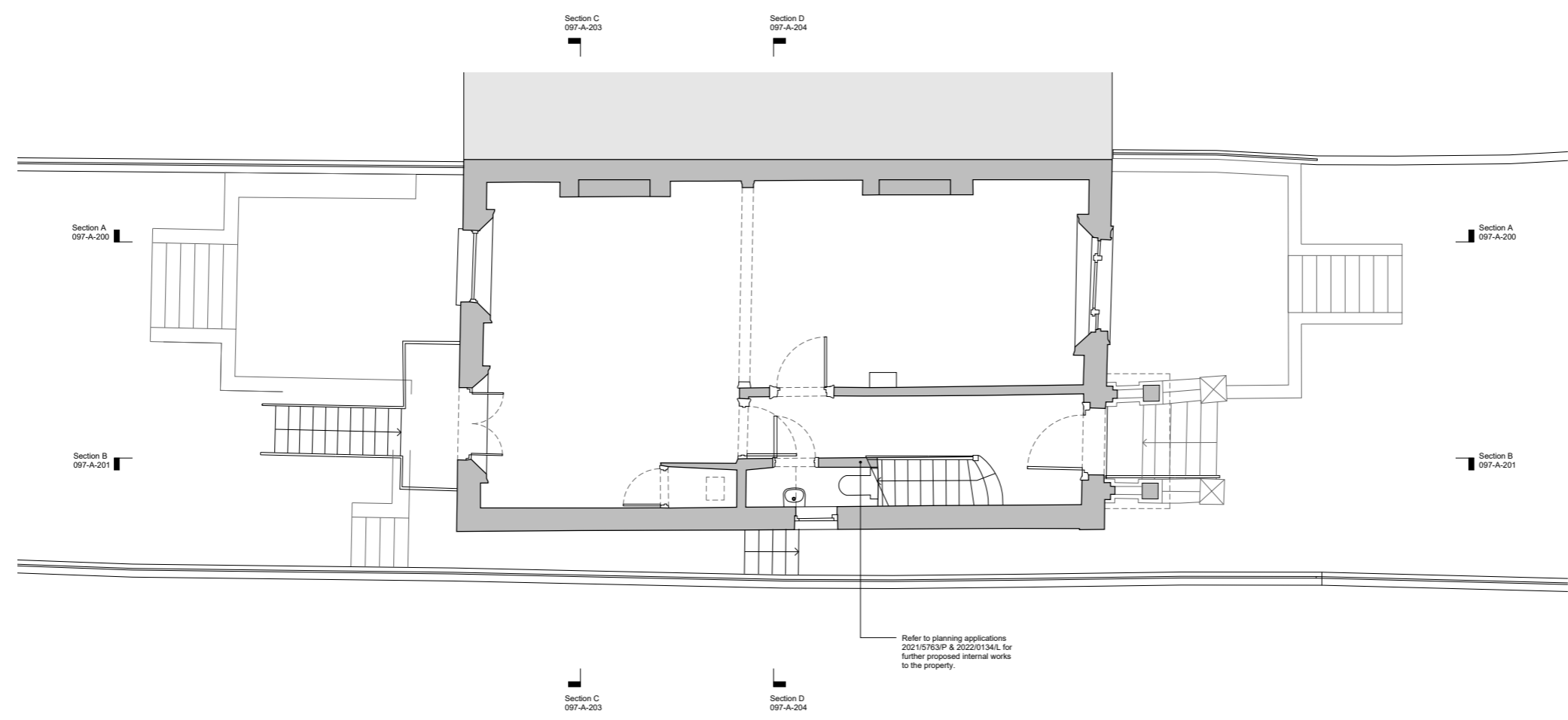
JW | MC

HESSELBRAND

© Hesselbrand Ltd. All rights described in Chapter IV of the Copyright, Designs and Patents Act 1988 have been asserted. The drawing is to be read in conjunction with specifications and all relevant drawings. Contractor to check all dimensions on site. Do not scale from this drawing. Hesselbrand Ltd is to be advised of any variation between the drawings and the site conditions.

Issued
 / 23.11.21 Issued for planning
 A 24.02.22 Amended for planning
 B 08.07.22 Amended for planning
 C 18.07.22 Amended for planning
 D 10.07.22 Amended for planning8

Notes
 Existing
 Proposed



20 Eton Villas
 Proposed

097-A-101

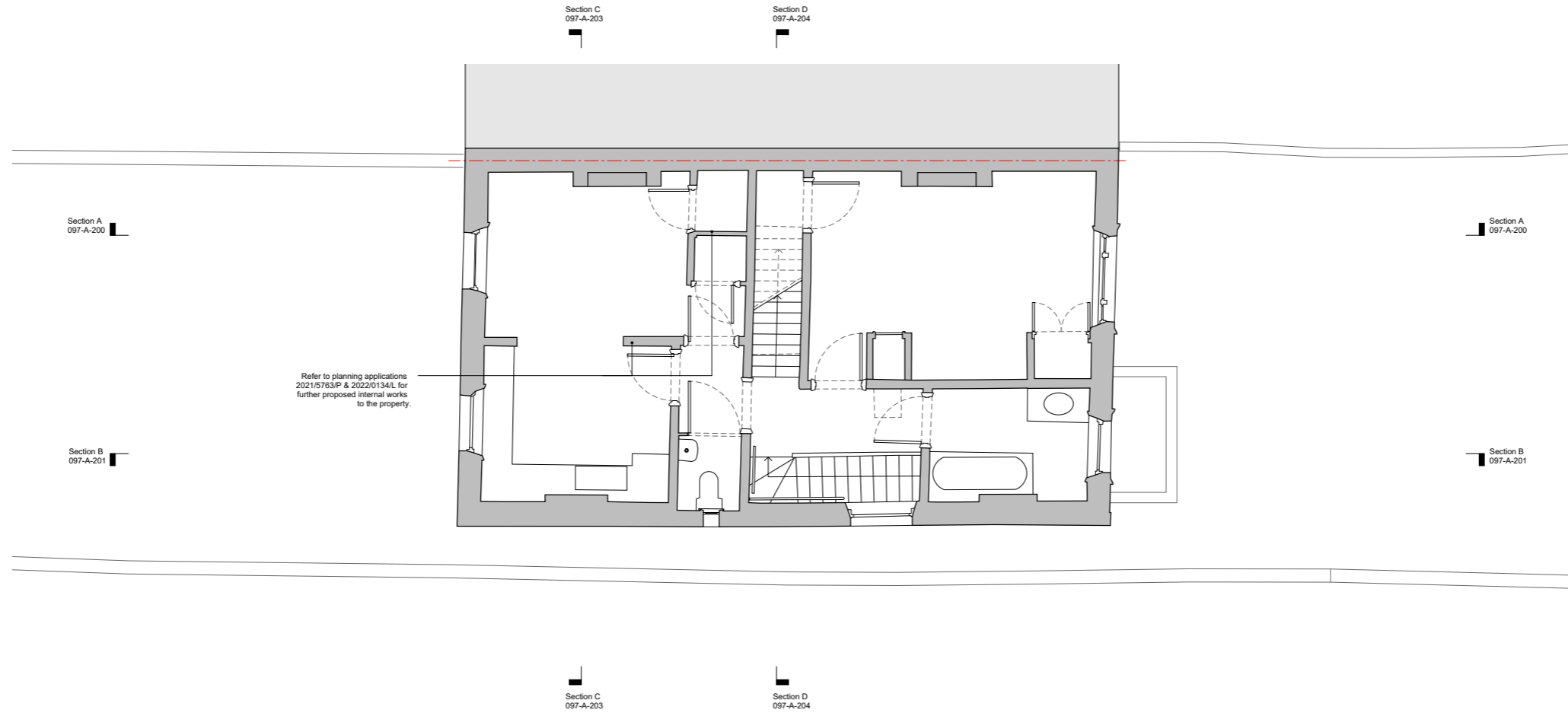
Raised Ground Floor Plan
 24.02.22 1:100 @ A3
 JW MC

HESSELBRAND

© Hesselbrand Ltd. All rights described in Chapter IV of the Copyright, Designs and Patents Act 1988 have been asserted. The drawing is to be read in conjunction with specifications and all relevant drawings. Contractor to check all dimensions on site. Do not scale from this drawing. Hesselbrand Ltd is to be advised of any variation between the drawings and the site conditions.

Issued
 / 23.11.21 Issued for planning
 A 24.02.22 Amended for planning
 B 08.07.22 Amended for planning
 C 18.07.22 Amended for planning
 D 10.07.22 Amended for planning8

Notes
 Existing
 Proposed



20 Eton Villas

Proposed

097-A-102

First Floor Plan

24.02.22 | 1:100 @ A3

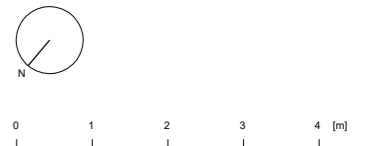
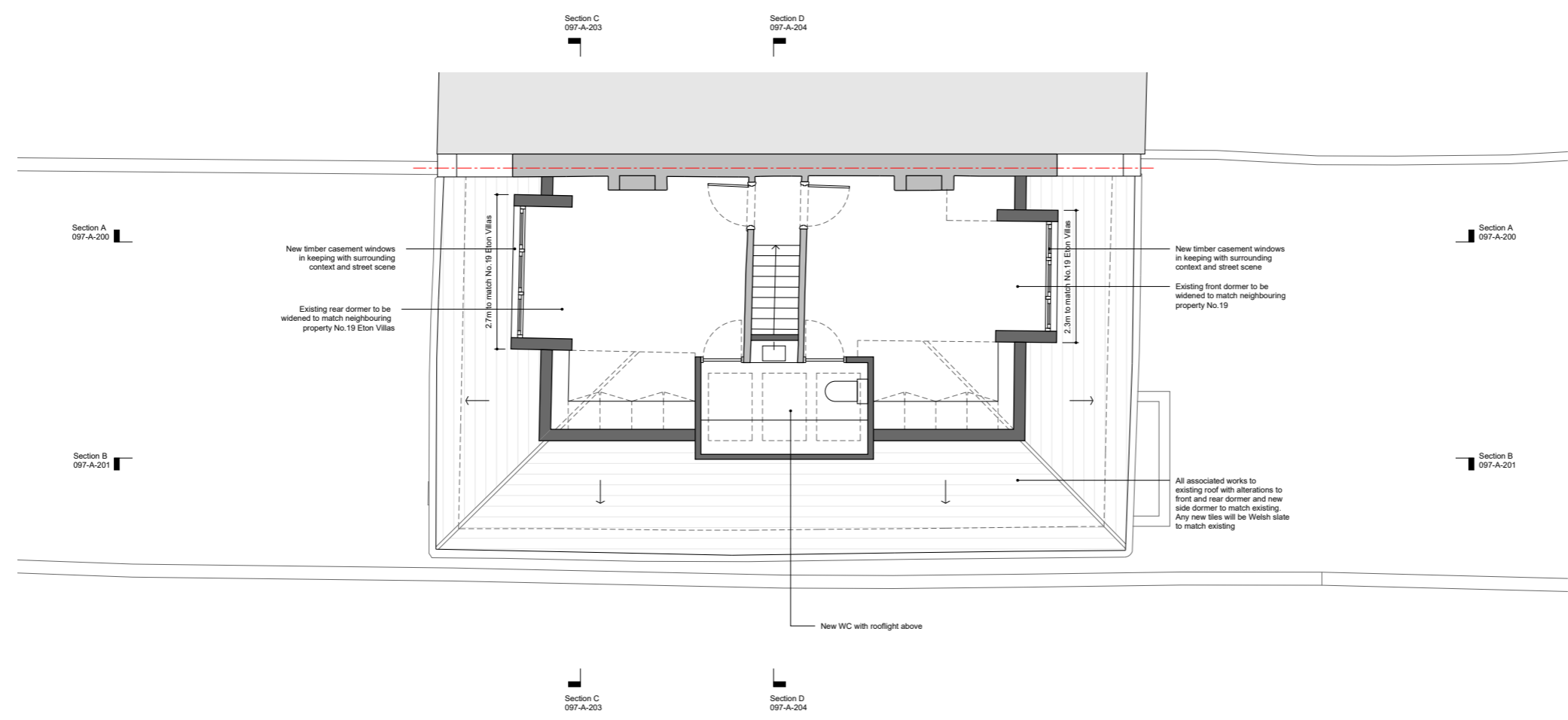
JW | MC

HESSELBRAND

© Hesselbrand Ltd. All rights described in Chapter IV of the Copyright, Designs and Patents Act 1988 have been asserted. The drawing is to be read in conjunction with specifications and all relevant drawings. Contractor to check all dimensions on site. Do not scale from this drawing. Hesselbrand Ltd is to be advised of any variation between the drawings and the site conditions.

Issued
 / 23.11.21 Issued for planning
 A 24.02.22 Amended for planning
 B 08.07.22 Amended for planning
 C 18.07.22 Amended for planning
 D 10.07.22 Amended for planning8

Notes
 Existing
 Proposed



20 Eton Villas
 Proposed

097-A-103

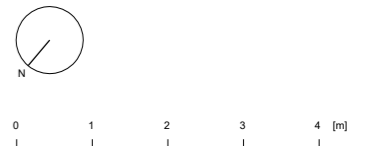
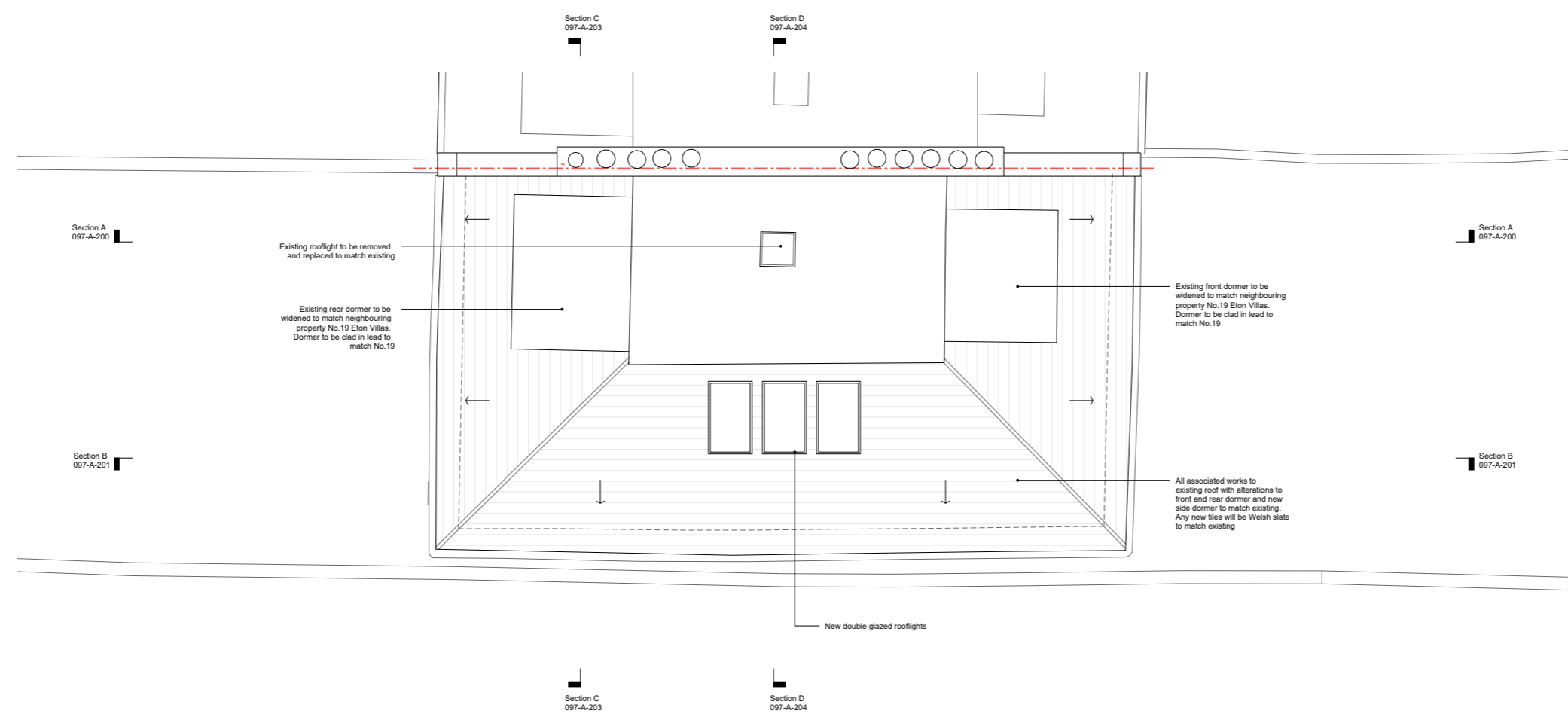
Second Floor Plan
 24.02.22 1:100 @ A3
 JW MC

HESSELBRAND

© Hesselbrand Ltd. All rights described in Chapter IV of the Copyright, Designs and Patents Act 1988 have been asserted. The drawing is to be read in conjunction with specifications and all relevant drawings. Contractor to check all dimensions on site. Do not scale from this drawing. Hesselbrand Ltd is to be advised of any variation between the drawings and the site conditions.

Issued
 / 23.11.21 Issued for planning
 A 24.02.22 Amended for planning
 B 08.07.22 Amended for planning
 C 18.07.22 Amended for planning
 D 10.07.22 Amended for planning8

Notes
 Existing
 Proposed



20 Eton Villas
 Proposed

097-A-104

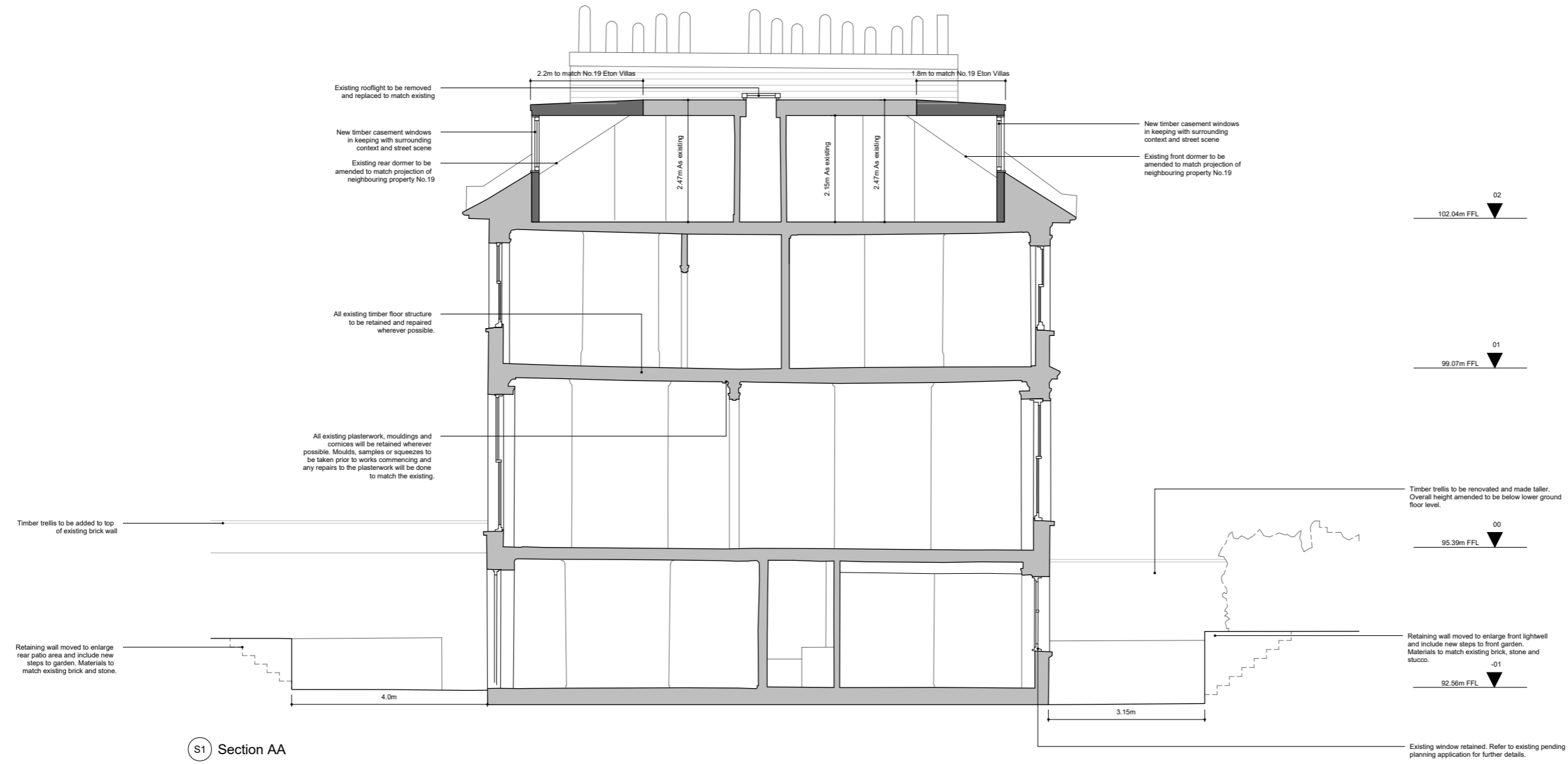
Roof Plan
 24.02.22 1:100 @ A3
 JW MC

HESSELBRAND

© Hesselbrand Ltd. All rights described in Chapter IV of the Copyright, Designs and Patents Act 1988 have been asserted. The drawing is to be read in conjunction with specifications and all relevant drawings. Contractor to check all dimensions on site. Do not scale from this drawing. Hesselbrand Ltd is to be advised of any variation between the drawings and the site conditions.

Issued	
/ 23.11.21	Issued for planning
A 24.02.22	Amended for planning
B 08.07.22	Amended for planning
C 18.07.22	Amended for planning
D 10.07.22	Amended for planning8

- Notes
- Existing
 - Proposed



S1 Section AA

20 Eton Villas
Proposed

097-A-200

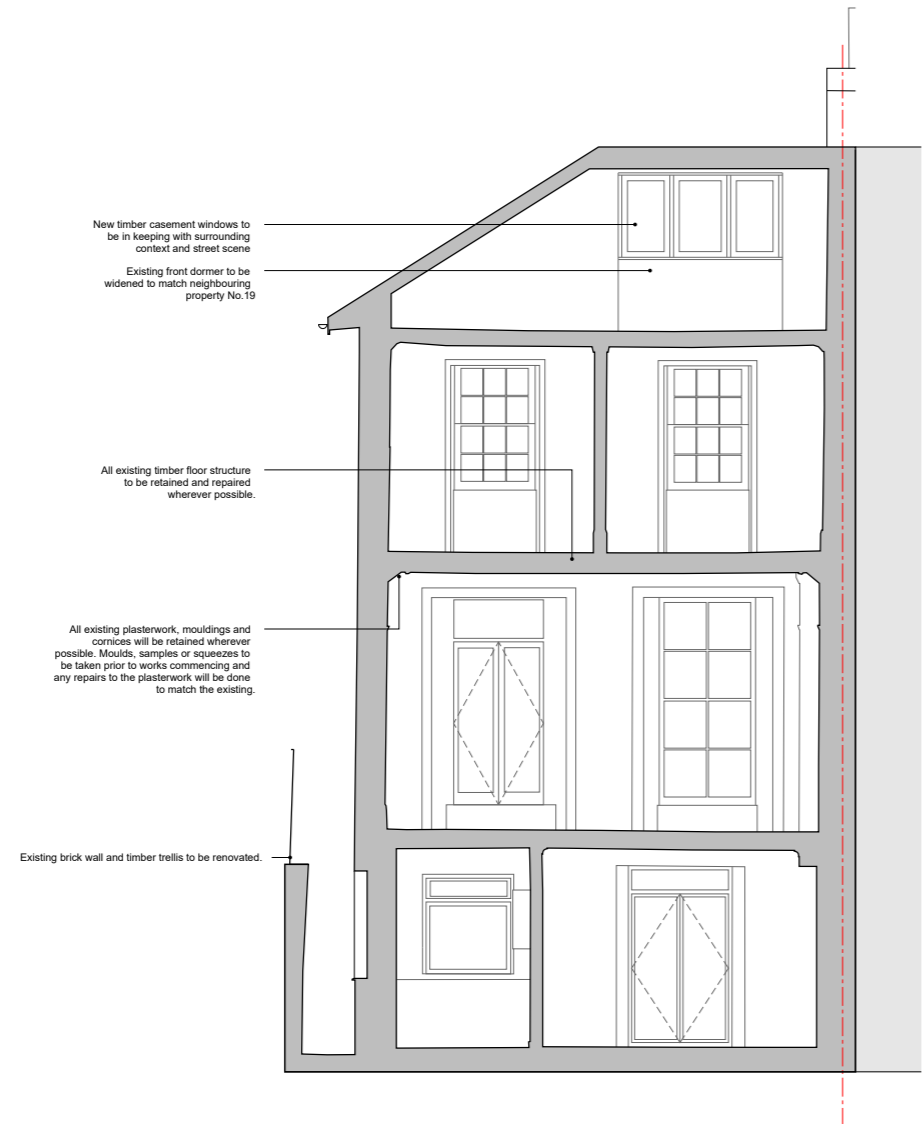
Section AA	
24.02.22	1:100 @ A3
JW	MC

HESSELBRAND

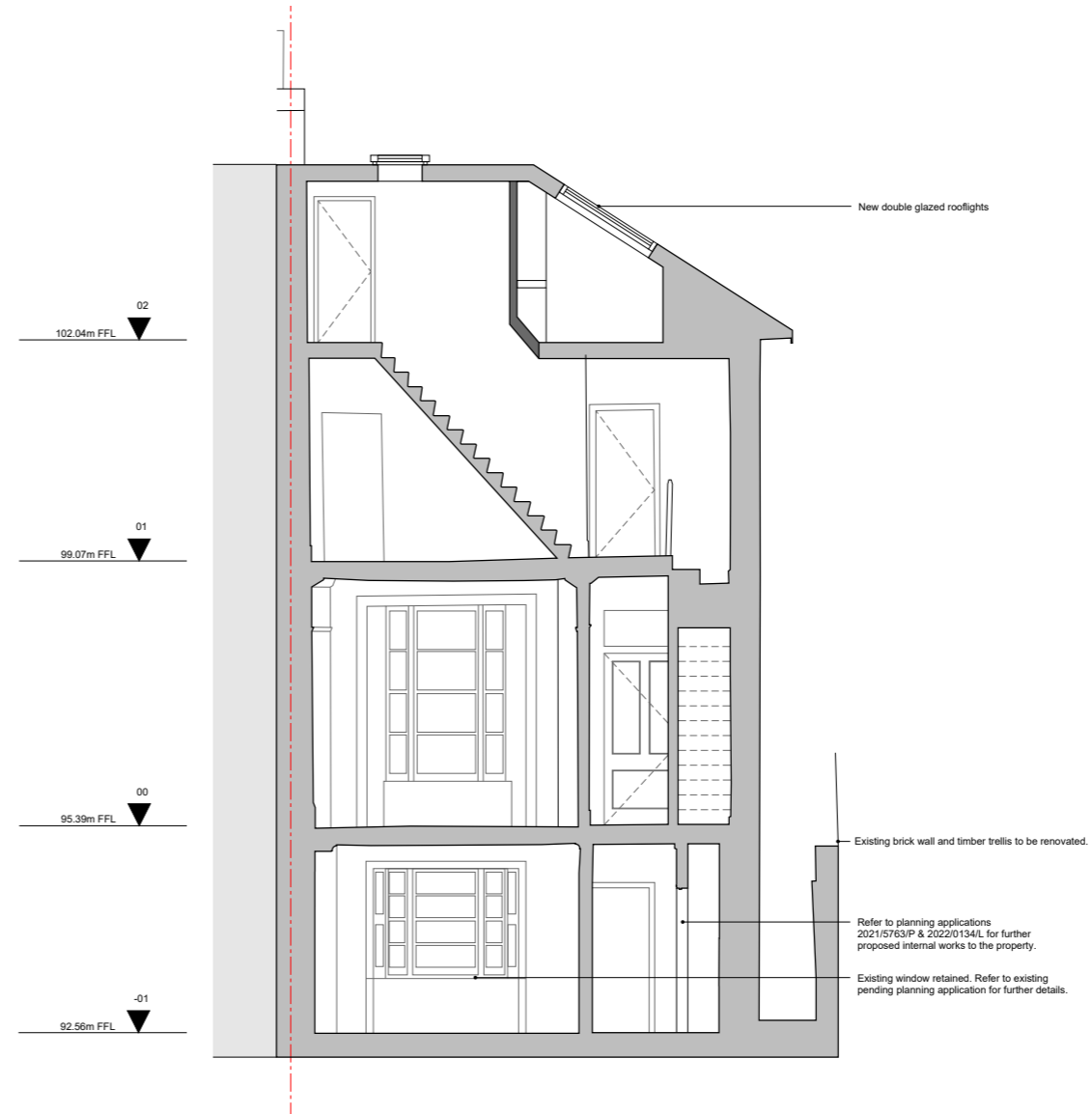
© Hesselbrand Ltd. All rights described in Chapter IV of the Copyright, Designs and Patents Act 1988 have been asserted. The drawing is to be read in conjunction with specifications and all relevant drawings. Contractor to check all dimensions on site. Do not scale from this drawing. Hesselbrand Ltd is to be advised of any variation between the drawings and the site conditions.

Issued
 / 23.11.21 Issued for planning
 A 24.02.22 Amended for planning
 B 08.07.22 Amended for planning
 C 18.07.22 Amended for planning
 D 10.07.22 Amended for planning8

Notes
 Existing
 Proposed



S3 Section CC



S4 Section DD



20 Eton Villas

Proposed

097-A-202

Section CC & DD

24.02.22 1:100 @ A3

JW MC

HESSELBRAND

Issued
 / 23.11.21 Issued for planning
 A 24.02.22 Amended for planning
 B 08.07.22 Amended for planning
 C 18.07.22 Amended for planning
 D 10.07.22 Amended for planning8

Notes
 Existing
 Proposed



20 Eton Villas
 Proposed

097-A-300

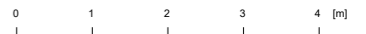
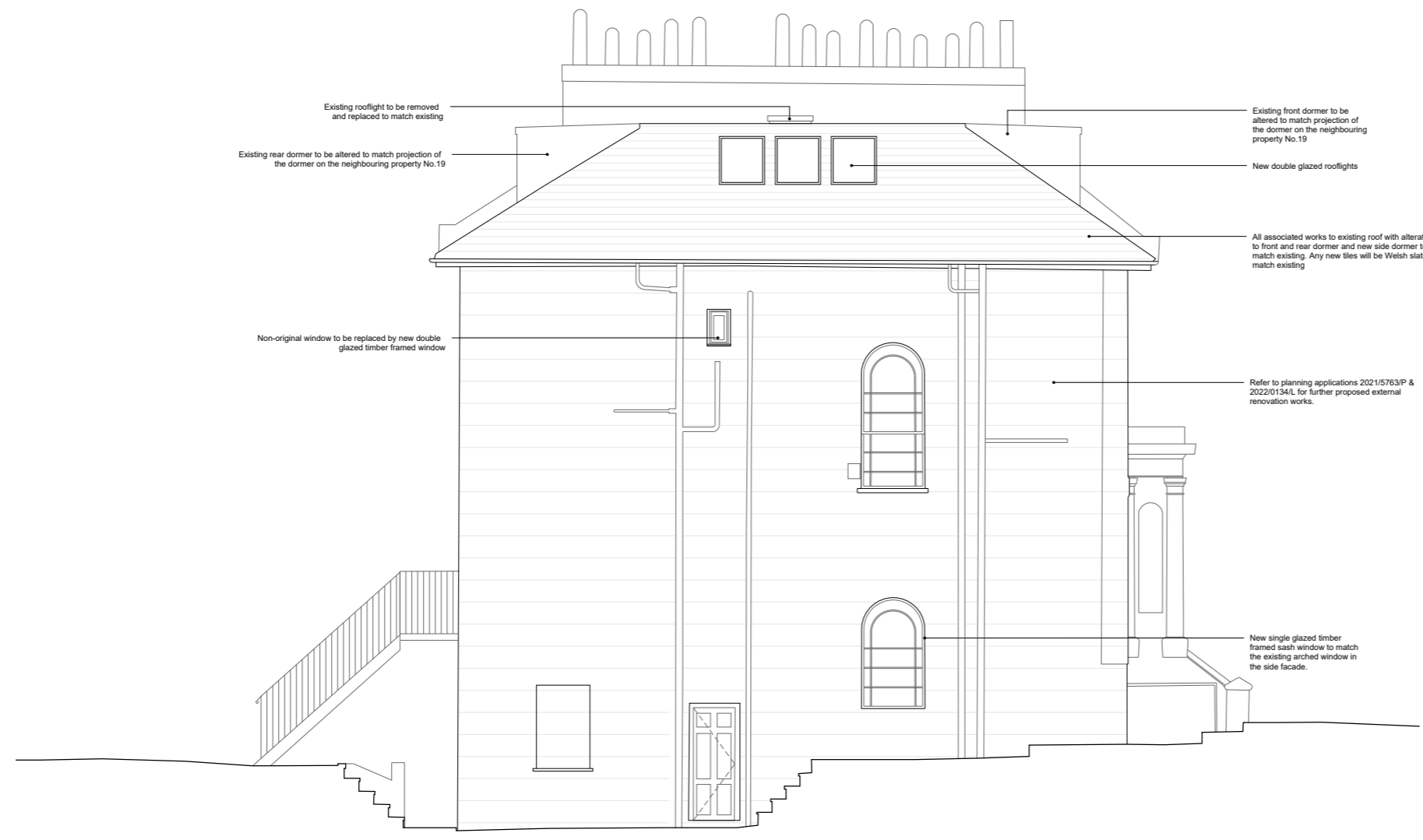
Front Elevation
 24.02.22 1:100 @ A3
 JW MC

HESSELBRAND

© Hesselbrand Ltd. All rights described in Chapter IV of the Copyright, Designs and Patents Act 1988 have been asserted. The drawing is to be read in conjunction with specifications and all relevant drawings. Contractor to check all dimensions on site. Do not scale from this drawing. Hesselbrand Ltd is to be advised of any variation between the drawings and the site conditions.

Issued
 / 23.11.21 Issued for planning
 A 24.02.22 Amended for planning
 B 08.07.22 Amended for planning
 C 18.07.22 Amended for planning
 D 10.07.22 Amended for planning8

Notes
 Existing
 Proposed



20 Eton Villas
 Proposed

097-A-301

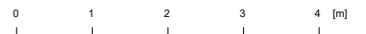
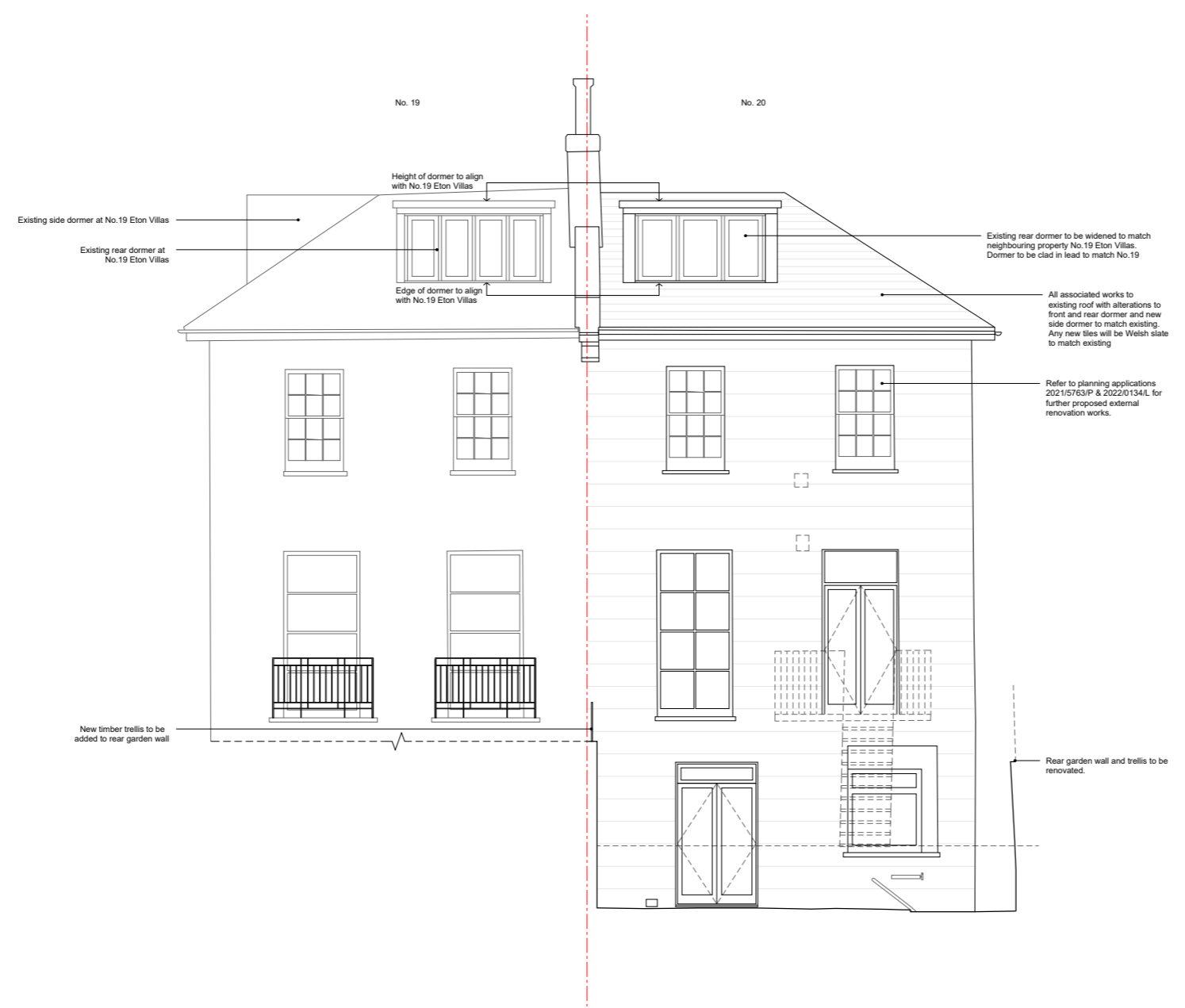
Side Elevation
 24.02.22 1:100 @ A3
 JW MC

HESSELBRAND

© Hesselbrand Ltd. All rights described in Chapter IV of the Copyright, Designs and Patents Act 1988 have been asserted. The drawing is to be read in conjunction with specifications and all relevant drawings. Contractor to check all dimensions on site. Do not scale from this drawing. Hesselbrand Ltd is to be advised of any variation between the drawings and the site conditions.

Issued
 / 23.11.21 Issued for planning
 A 24.02.22 Amended for planning
 B 08.07.22 Amended for planning
 C 18.07.22 Amended for planning
 D 10.07.22 Amended for planning8

Notes
 Existing
 Proposed



20 Eton Villas
 Proposed

097-A-302

Rear Elevation	
24.02.22	1:100 @ A3
JW	MC

HESSELBRAND

© Hesselbrand Ltd. All rights described in Chapter IV of the Copyright, Designs and Patents Act 1988 have been asserted. The drawing is to be read in conjunction with specifications and all relevant drawings. Contractor to check all dimensions on site. Do not scale from this drawing. Hesselbrand Ltd is to be advised of any variation between the drawings and the site conditions.

Issued
 / 24.02.22 Issued for planning
 A 08.07.22 Amended for planning
 B 18.07.22 Amended for planning
 C 10.08.22 Amended for planning

Notes
 Existing
 Proposed



20 Eton Villas
 Proposed

097-A-305

Street Elevation
 24.02.22 1:100 @ A3
 MS MC

HESSELBRAND

© Hesselbrand Ltd. All rights described in Chapter IV of the Copyright, Designs and Patents Act 1988 have been asserted. The drawing is to be read in conjunction with specifications and all relevant drawings. Contractor to check all dimensions on site. Do not scale from this drawing. Hesselbrand Ltd is to be advised of any variation between the drawings and the site conditions.