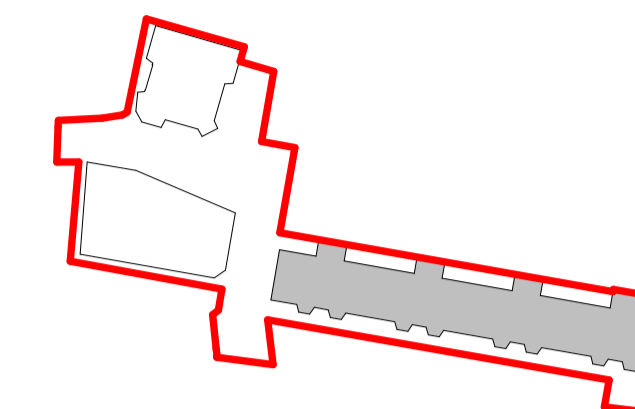
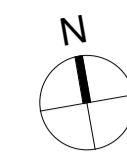


Contractors and consultants are not to scale dimensions from this drawing



Key Plan - Building C

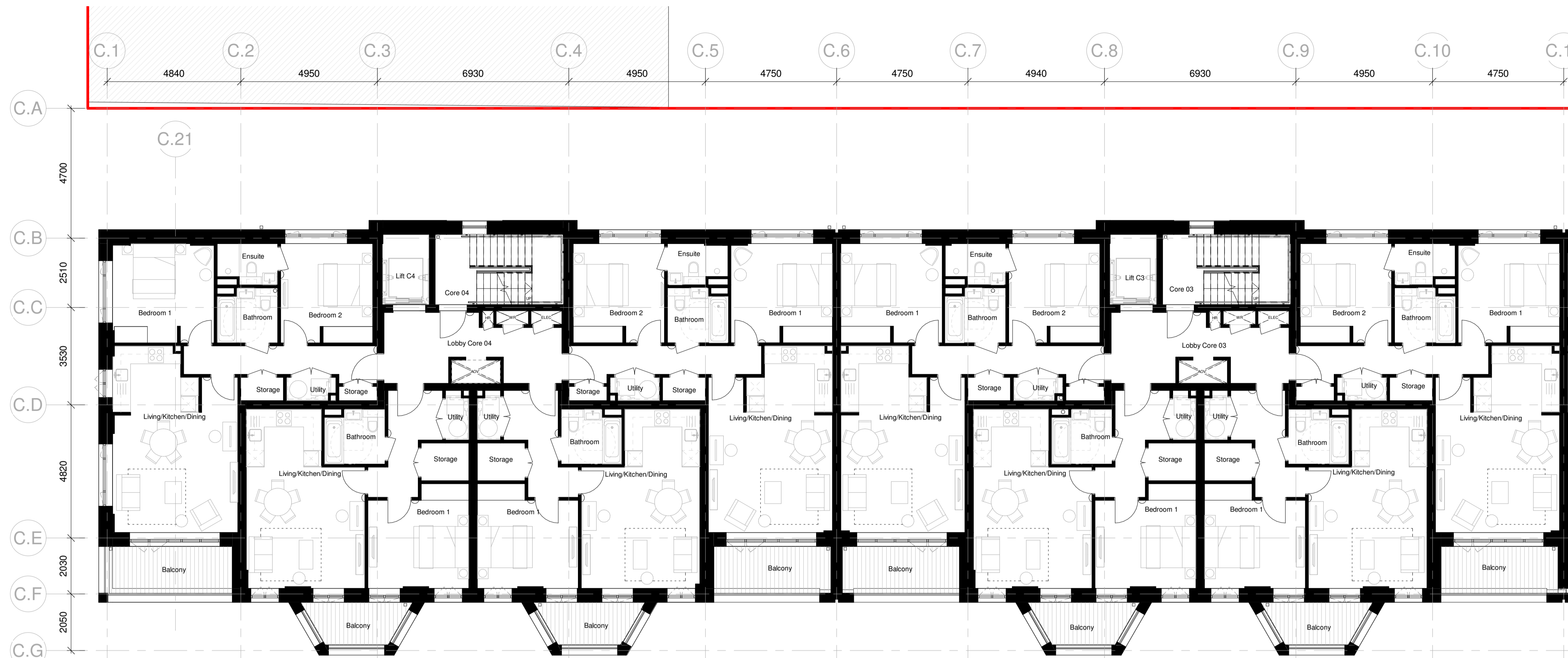
Scale 1 : 2000

Move 300mm west due to existing constraint impacting installation line of the sheet piling.

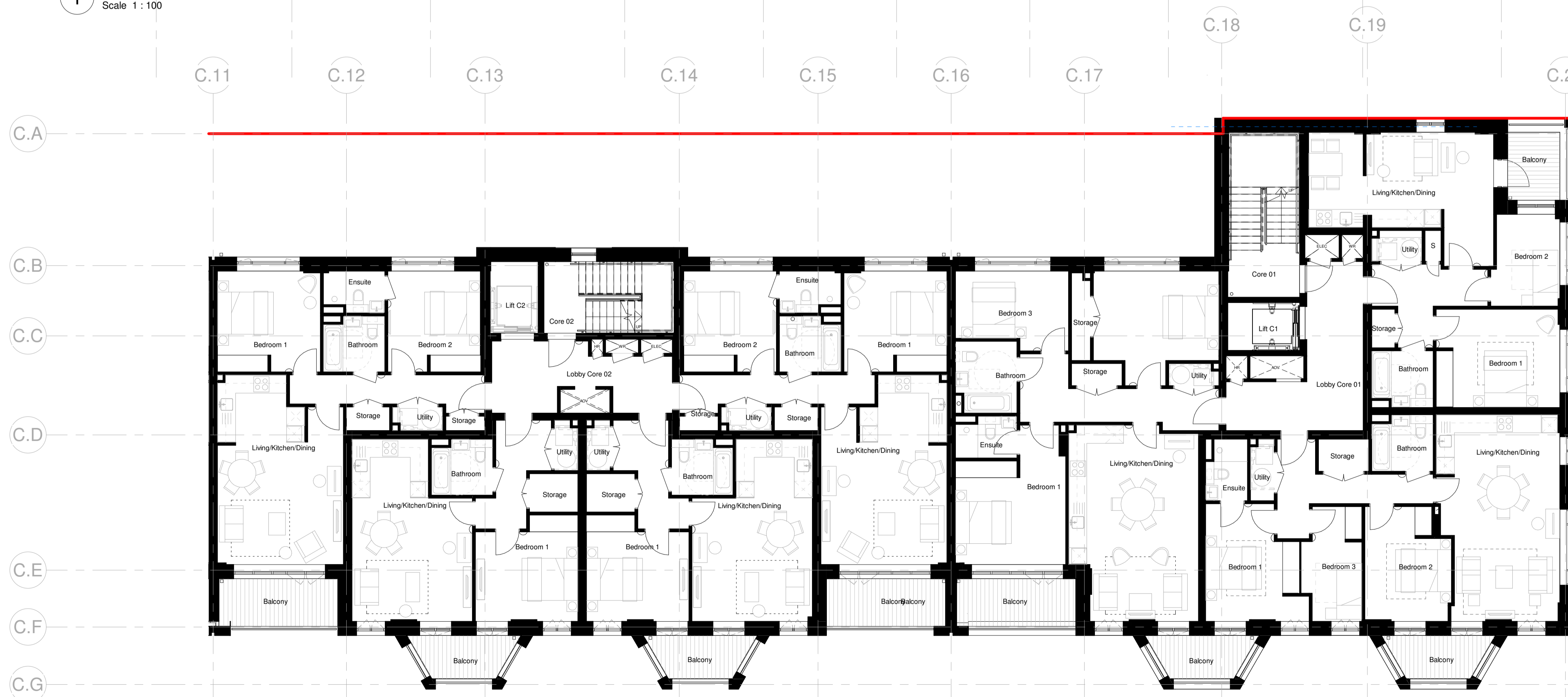
North eastern end apartment to levels 1-4 conversion of oversized 1 bedroom apartment into 2 bedroom apartment.

South eastern end apartment to levels 1-3 conversion of oversized 2 bedroom apartment into 3 bedroom apartment.

Central apartment level 4 conversion of oversized 2 bedroom apartment into 3 bedroom apartment.



1 Block C - 03 GAs - L02 A
Scale 1 : 100



2 Block C - 03 GAs - L02 B
Scale 1 : 100

Revision	Date	Drawn by	Checked By	Revision Description
P1	26/07/22	JW	LW	NMA Planning issue

BroadwayMalyan^{BM}

4 Pear Place
London
SE1 8BT

T: +44 (0)20 7261 4200
F: +44 (0)20 7261 4300
E: Lon@BroadwayMalyan.com

www.BroadwayMalyan.com

Client
West Hampstead Ltd

Project
**Liddell Road
West Hampstead**

Description
**Second Floor Plan
Building C
General Arrangement**

Status

Scale	Drawn By	Date
1:100@A1	BM	26/07/22
Job Number	Drawing Number	Revision
35536	BM-BC-02-DR-A-03-0002PL	P1