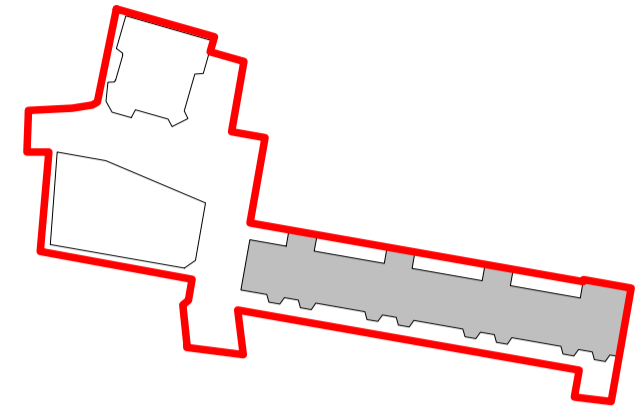
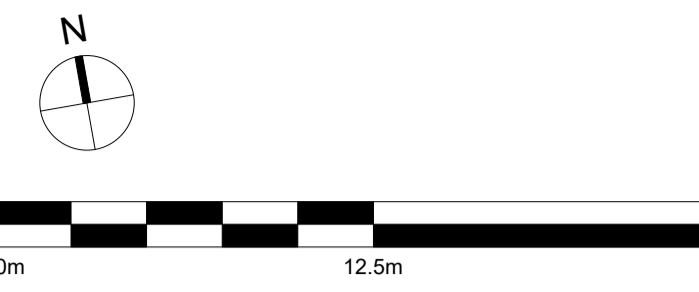


Contractors and consultants are not to scale dimensions from this drawing



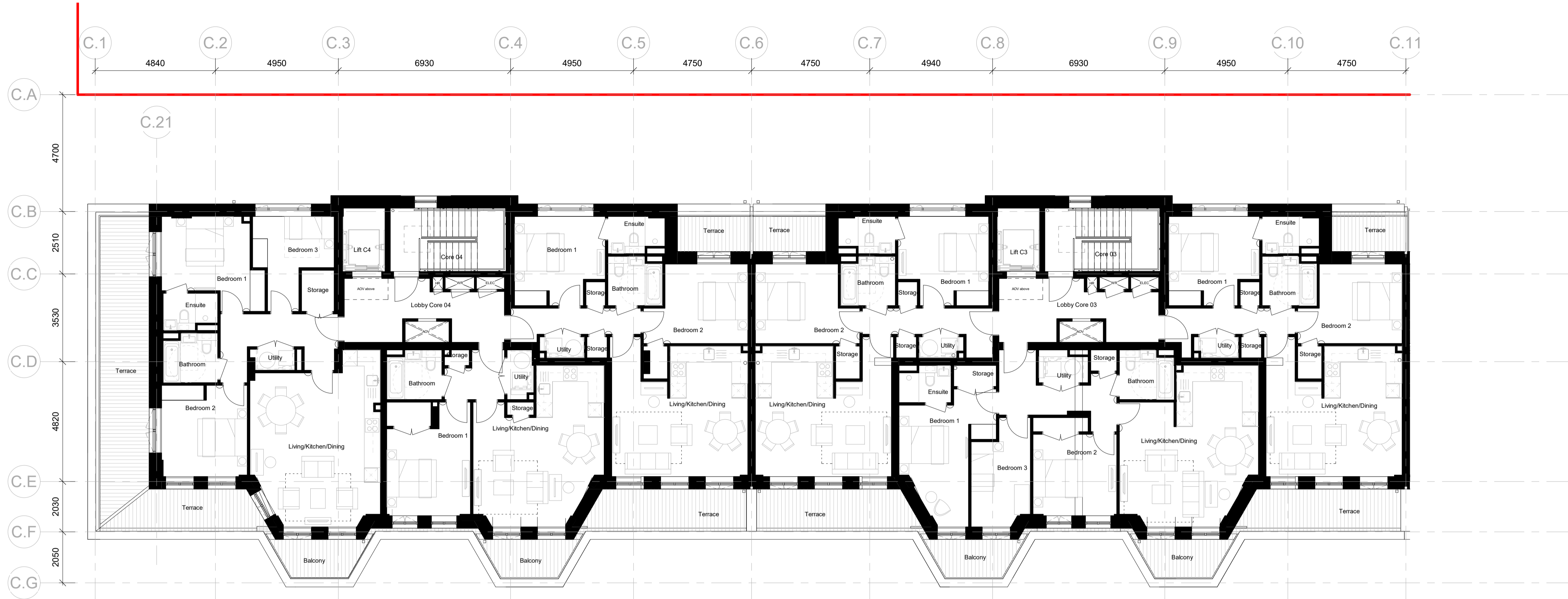
Key Plan - Building C  
Scale 1 : 2000

Move 300mm west due to existing constraint impacting installation line of the sheet piling.

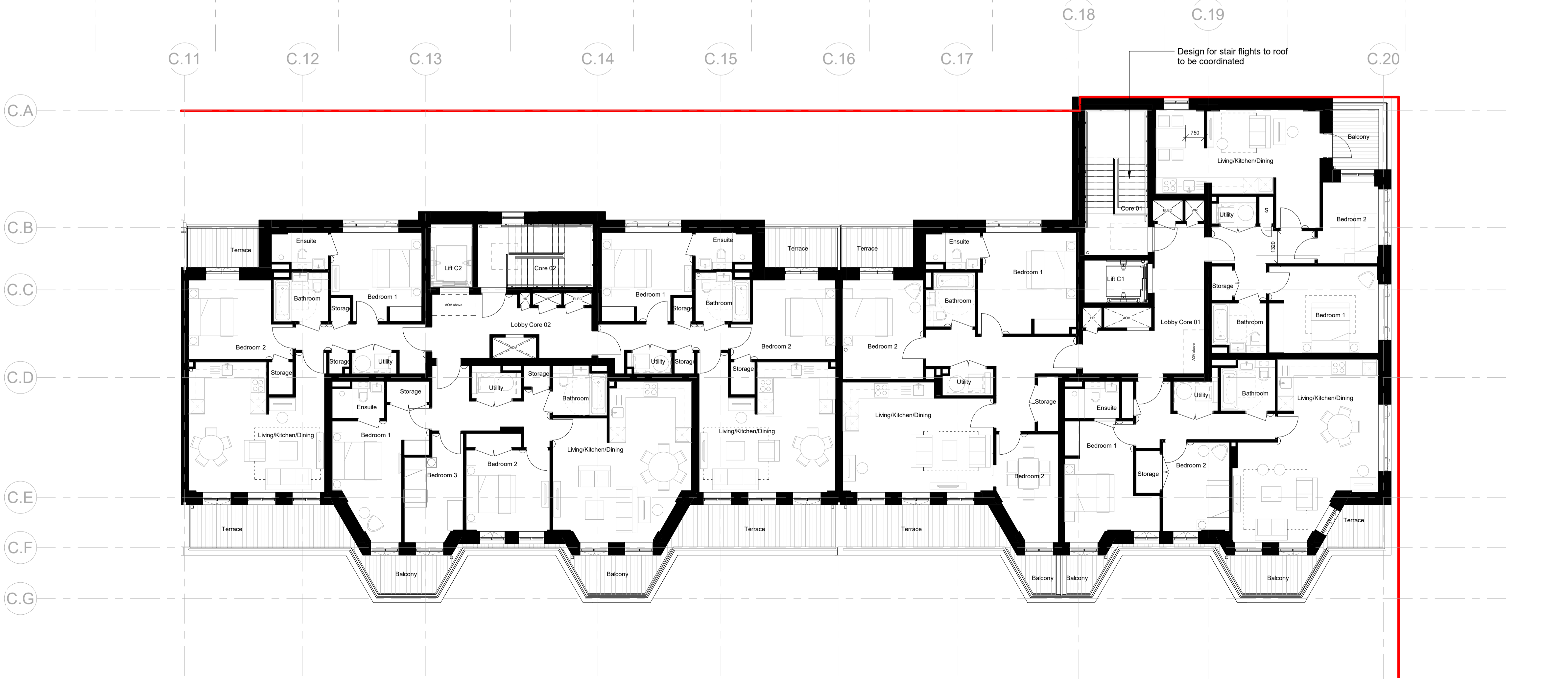
North eastern end apartment to levels 1-4 conversion of oversized 1 bedroom apartment into 2 bedroom apartment.

South eastern end apartment to levels 1-3 conversion of oversized 2 bedroom apartment into 3 bedroom apartment.

Central apartment level 4 conversion of oversized 2 bedroom apartment into 3 bedroom apartment.



1 Block C - 03 GAs - L04 A  
Scale 1 : 100



2 Block C - 03 GAs - L04 B  
Scale 1 : 100

P1	26/07/22	LW	LW	NMA Planning Issue
Revision	Date	Drawn by	Checked By	Revision Description

**BroadwayMalyan<sup>BM</sup>**

4 Pear Place  
London  
SE1 8BT

T: +44 (0)20 7261 4200  
F: +44 (0)20 7261 4300  
E: Lon@BroadwayMalyan.com

www.BroadwayMalyan.com

Client  
**West Hampstead Ltd**

Project  
**Liddell Road  
West Hampstead**

Description  
**Fourth Floor Plan  
Building C  
General Arrangement**

Status			
Scale	Drawn By	Date	
1:100@A1	BM	26/07/22	
Job Number	Drawing Number	Revision	
35536	BM-BC-04-DR-A-03-0004PL	P1	