

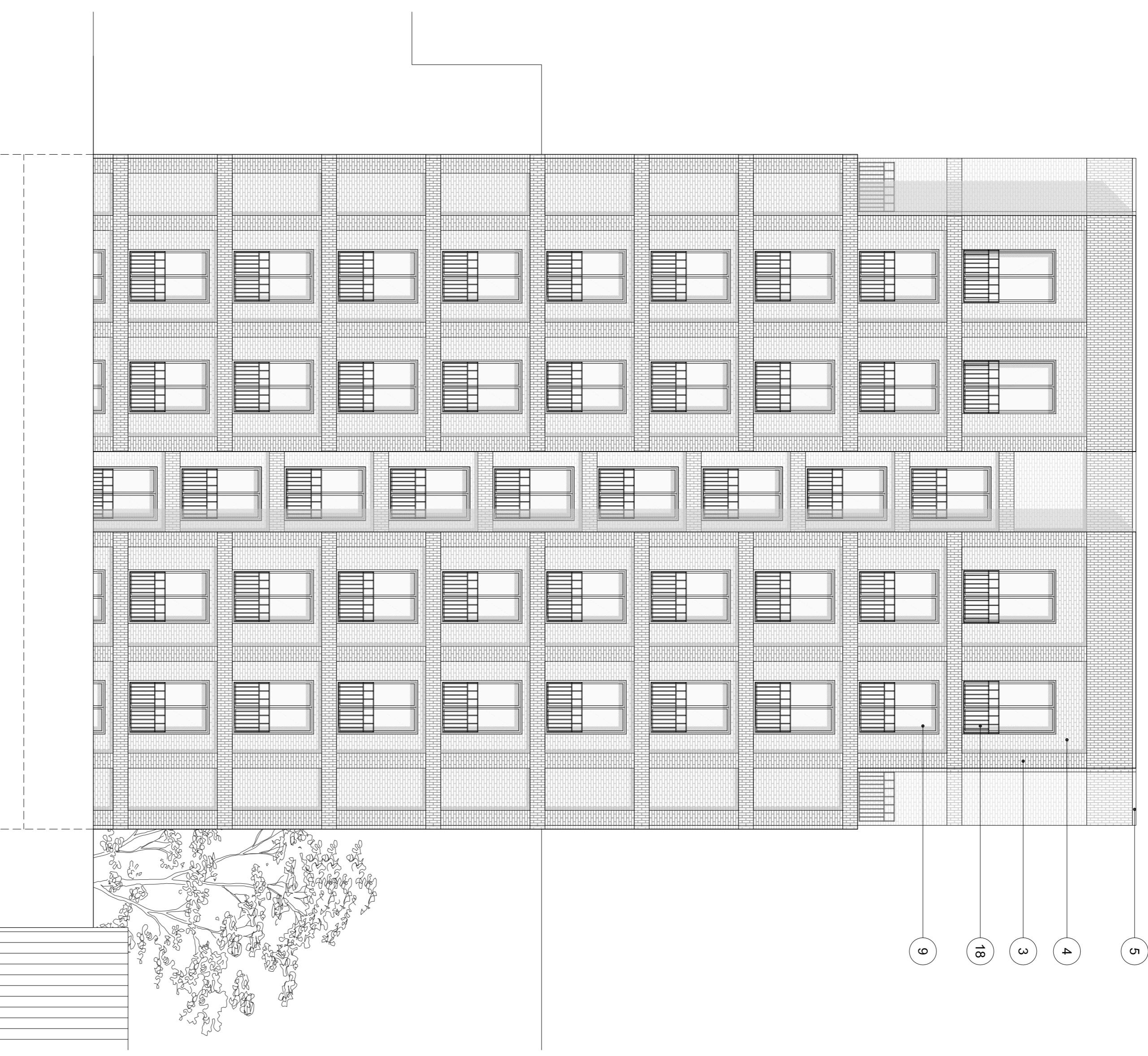
Do not scale from this drawing. Verify all dimensions on site. Drawing should be read in conjunction with information from all other design consultants and contractors. All drawings in digital format are for reference only, paper copies are available on request.

## FOR PLANNING

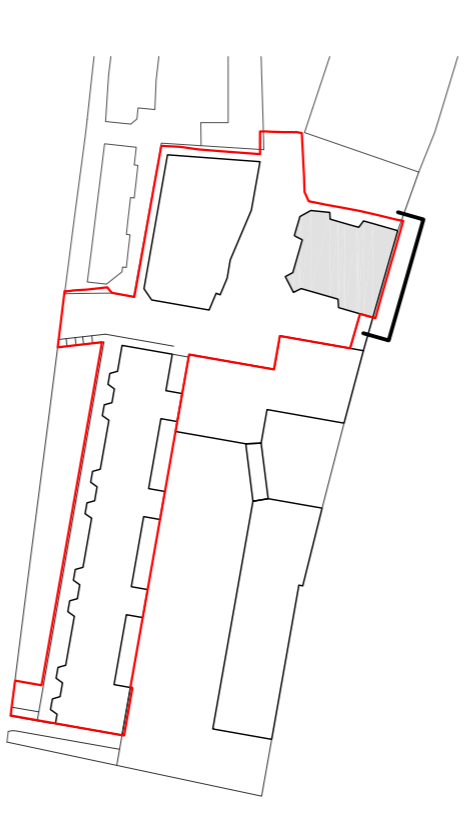
© Maccreanor Lavington Ltd.

### MATERIALS KEY

- Solid facing Renaissance Multi brick by "Weinberger", or similar approved. To be laid in stretcher bond with terracotta colour mortar joint, "Tamao" colour ref: Y127 or similar approved
- Solid facing Heritage Blend brick by "Weinberger", or similar approved. To be laid in stretcher bond with natural light grey colour mortar joint, colour ref: "CPI Euromix, MAANK100" or similar approved
- Frame Facing Heritage Blend Brickwork by "Weinberger", or similar approved. To be laid in stretcher bond with natural light grey colour mortar joint, colour ref: "CPI Euromix, MAANK100" or similar approved
- Infill Facing Renaissance Multi Brickwork by "Weinberger", or similar approved. To be laid in stretcher bond with natural light grey colour mortar joint, colour ref: "CPI Euromix, MAANK100" or similar approved
- Terracotta reconstituted stone sills, copings and spandrel panels
- Portland Stone reconstituted stone sills and copings
- Bath Stone reconstituted stone entrance surround and copings
- Aluminium sill anodized exterior finish, ref: Anodok 541
- Inward opening composite aluminium casement windows, anodized exterior finish, ref: Anodok 541
- Inward opening composite aluminium casement windows, anodized exterior finish, ref: Anodok 543
- Inward opening aluminium windows, anodized exterior finish, ref: Anodok 541
- Inward opening aluminium windows, anodized exterior finish, ref: Anodok 543
- Inward opening aluminium winter gardens, anodized exterior finish, ref: Anodok 541
- Inward opening aluminium winter gardens, anodized exterior finish, ref: Anodok 541
- Aluminium door frames, anodized exterior finish, ref: Anodok 541
- Aluminium door frames, anodized exterior finish ref: Anodok 543
- Steel louvered doors to plant rooms, polyester powder coated, matt, RAL 7006
- Steel louvered doors to plant rooms, polyester powder coated, matt, RAL 8014
- Balcony balustrades in polyester powder coated steel, matt, RAL 7006
- Balcony balustrades in polyester powder coated steel, matt, RAL 8014
- Steel signage polyester powder coated, matt, RAL 7006
- Steel signage polyester powder coated, matt, RAL 8014
- Glass mosaic tiling to entranceway, gold and white colour
- Nassaraniduba hardwood timber decking or similar approved
- Balcony soffits rendered cementitious board, terracotta colour



For proposed landscape information refer to JCLA landscape drawings submitted as part of this planning application



Rev	Details	Dwn	Date

**Application 02**  
**Expansion of Kingsgate Primary School & Redevelopment of Liddell Road Phase 02**

Client: London Borough of Camden  
 Title: Residential Block B North Elevation  
 Scale: 1:100 @ A1 / 1:200 @ A3  
 Date: 01-12-2014 Drawn: RHR

**MLA / 403 / P2 / 353**

**MaccreanorLavington**  
 3rd Floor  
 19-21 Inns Street  
 London N1 7LL

1 +44(0)207 336 73 53  
 f +44(0)207 336 76 55  
 e uk@mla-architects.com

RESIDENTIAL BLOCK B NORTH ELEVATION

