

Do not scale from this drawing. Verify all dimensions on site. Drawing should be read in conjunction with information from all other design consultants and contractors. All drawings in digital format are for reference only, paper copies are available on request.

FOR PLANNING

© Maccreanor Lavington Ltd.

Tenure Key:

Market Sale

1b2p

2b4p

3b5p / 3b6p

Social Rent

1b2p

2b4p

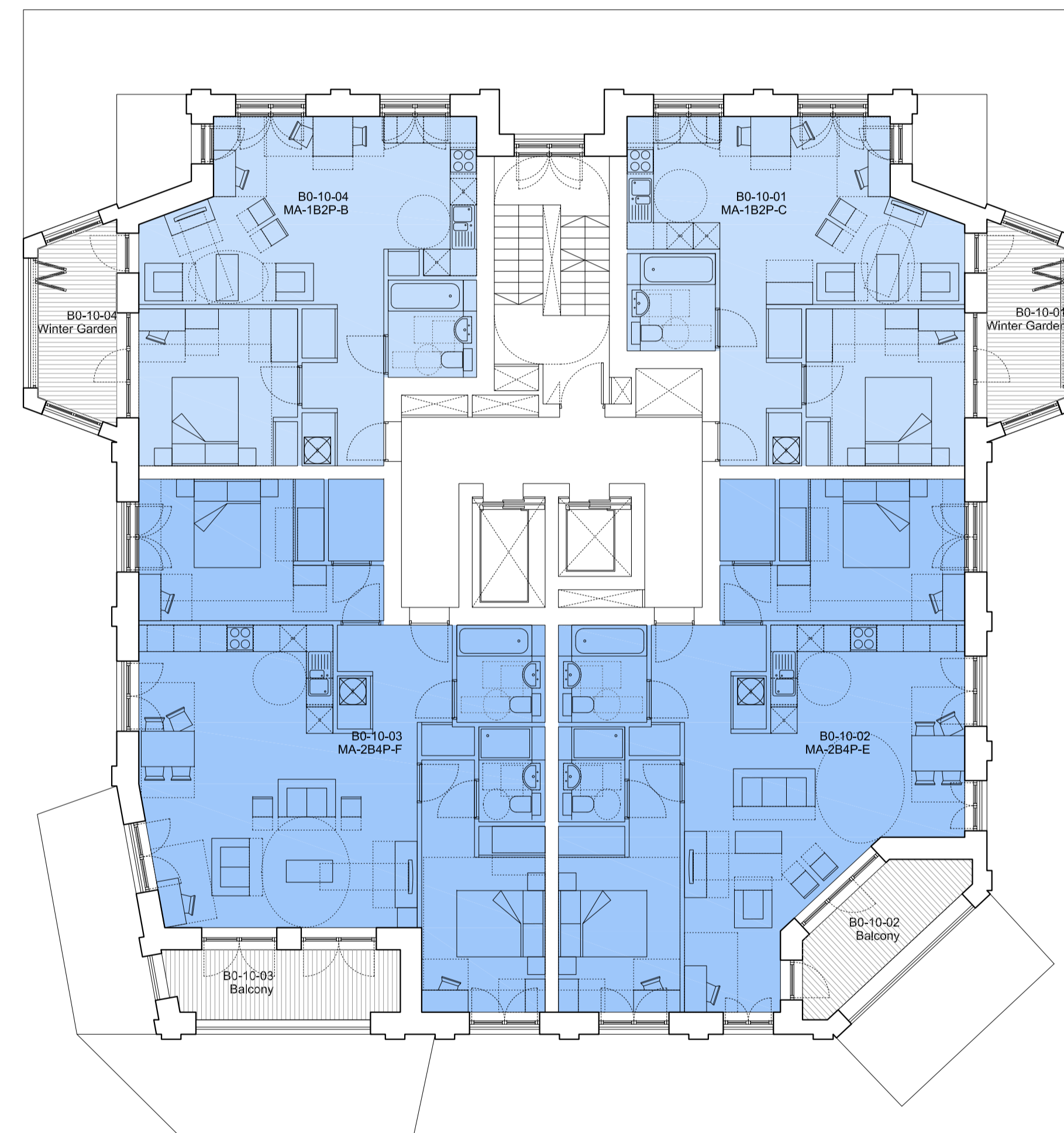
3b5p / 3b6p

Use Key:

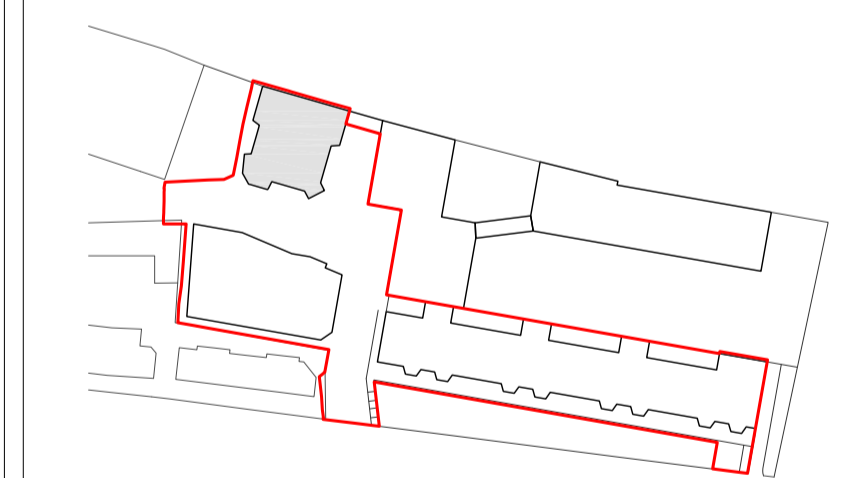
Residential Lobby/Circulation

Residential Ancillary/Storage

Plant / Servicing



This drawing has been prepared for the purpose of illustrating the design proposals for the Liddell Road Phase 2 Development as submitted for planning approval. This document is prepared for the sole use of The Mayor and Burgesses of the London Borough of Camden. Maccreanor Lavington Limited accepts no liability for use of this document by persons or parties other than The Mayor and Burgesses of the London Borough of Camden or for purposes other than those for which it was prepared.



A	---	JS	19-02-15
Rev	Details	Drwn	Date

Application 02 Expansion of Kingsgate Primary School & Redevelopment of Liddell Road Phase 02

Client: London Borough of Camden
 Title: Residential Block B
 Tenth Floor Plan
 Scale: 1:100 @ A1 / 1:200 @ A3
 Date: 01-12-2014 Drawn: RHR

MLA / 403 / P2 / 160 / Rev A

MaccreanorLavington

3rd Floor
 19-21 Nile Street
 London N1 7LL

t +44(0)207 336 73 53
 f +44(0)207 336 76 55
 e uk@ml-architects.com

