

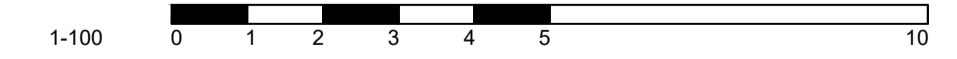
Key Plan: NTS

01 Proposed Whitfield Elevation (A-A)



MATERIALS

- ① Opaque glazed panels to match existing.
- ② Aluminum panels with polyester powder coated finish.
- ③ Opaque glazed doors in polyester powder coat finish.
- ④ Glazed shopfronts with polyester powder coat aluminium frame.
- ⑤ Full height glazed doors in polyester powder coat aluminium.
- ⑥ Double glazed aluminium windows with polyester powder coated finish and opaque glazed lower panels.
- ⑦ External wall clad in white render to match floor below.
- ⑧ Curtain wall system with polyester powder coated finish.
- ⑨ Glazed sliding doors to access amenity area.
- ⑩ Grey finish zinc cladding.
- ⑪ Glass balustrade to amenity areas.
- ⑫ Stone capping finish to new parapet.
- ⑬ Lift Overrun in grey zinc cladding.
- ⑭ Grey finish zinc cladding.
- ⑮ 2m high grey louvred acoustic enclosure.
- ⑯ Brise Soleil in polyester powder coat finish.
- ⑰ Outward opening terrace door.
- ⑱ Double glazed aluminium windows with polyester powder coated finish and opaque glazed lower panels.
- ⑲ 1.35M high Planter
- ⑳ 2.5m high grey Louvred acoustic enclosure.



02 North West Elevation (B-B)

This drawing is copyright. This drawing must not be scaled. Figured dimensions, levels etc. are only to be used. Any inaccuracies, etc. must be notified to the architect. Detail drawings and larger scale drawings take precedence over smaller scaled drawings.

Model name and location
L761-P(0) 101.dwg

| Revisions | | |
|-----------|------------|------------------------------|
| A | 06/06/2022 | First Issue |
| B | 14/06/2022 | Project title revised |
| C | 25/07/2022 | Level 03 balustrade set back |

PLANNING

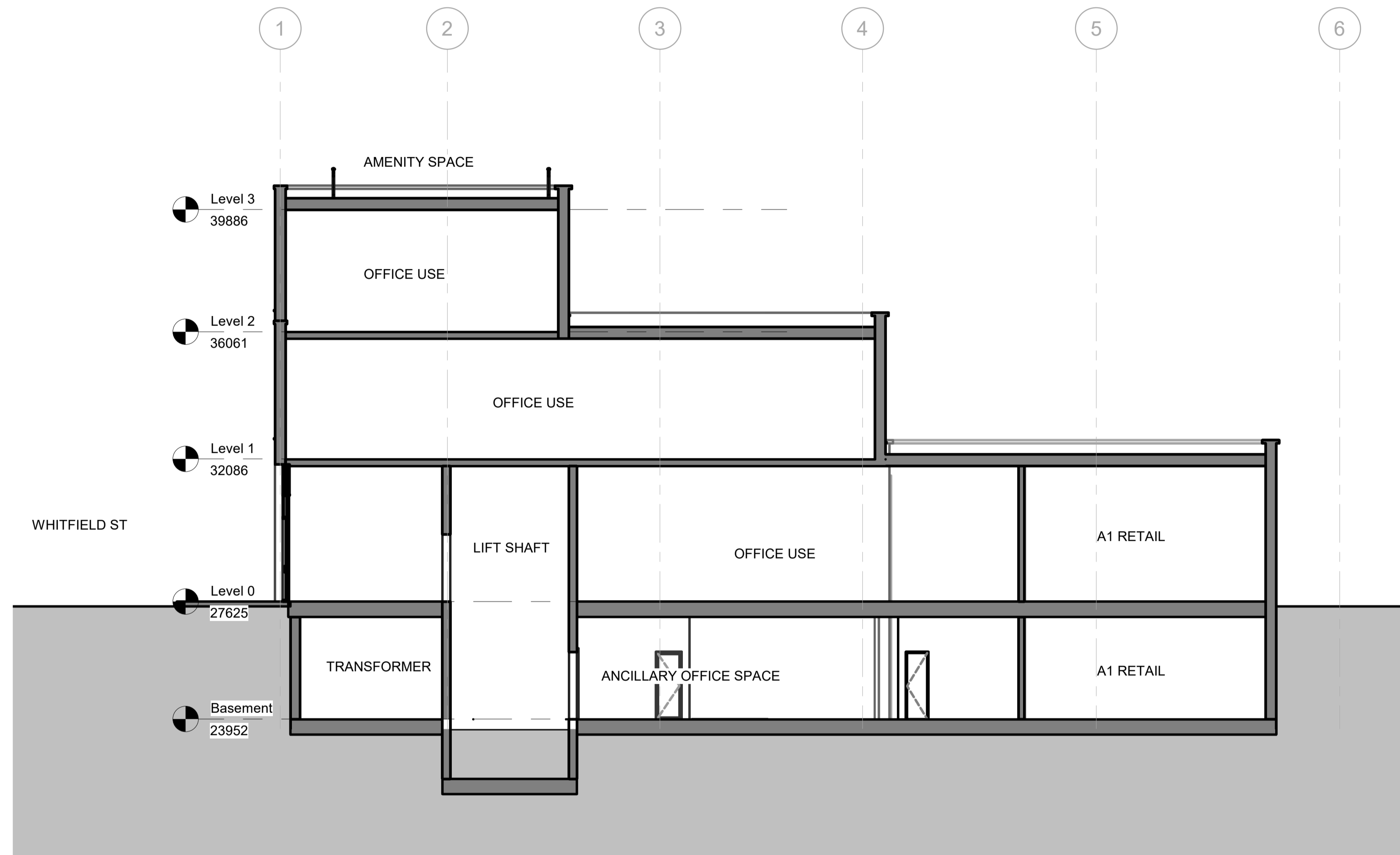
Project:
**16-24 Whitfield Street London. W1T 2RA
Extension and Alteration - Planning Application.**

Title:
Proposed Whitfield St & NW Elevation

Number: L761-P(0) 102 Revision: C
Scale: 1:100 @ A1
Date: 25/04/2022
Drawn: OW
Checked:

studio Cf

Trafalgar House
Unit B - C, Juniper Drive
London, SW18 1GY
020 7938 2464
projects@studiocf.co.uk
www.studiocf.co.uk



This drawing is copyright. This drawing must not be scaled. Figured dimensions, levels etc. are only to be used. Any inaccuracies, etc must be notified to the architect. Detail drawings and larger scale drawings take precedence over smaller scaled drawings.

| Revision | Date | Description |
|----------|------------|------------------------------------|
| A | 06/06/22 | First Issue |
| B | 14/06/22 | Project title and red line revised |
| C | 25/07/2022 | Level 03 balustrade set back |

Project:

16-24 Whitfield Street London. W1T 2RA. Extension and Alteration - Planning Application.

Title:

Proposed Section B-B

| | | | |
|---------------|--------------------------|-----------|---|
| Number: | L761-P(0)306 | Revision: | C |
| Scale (@ A1): | 1 : 100 | | |
| Date | 03/05/22 | | |
| Drawn | QW | | |
| Checked | <input type="checkbox"/> | | |

studio cf

Trafalgar House
Unit B - C, Juniper Drive
London, SW18 1GY

020 7938 2464
projects@studiocf.co.uk
www.studiocf.co.uk

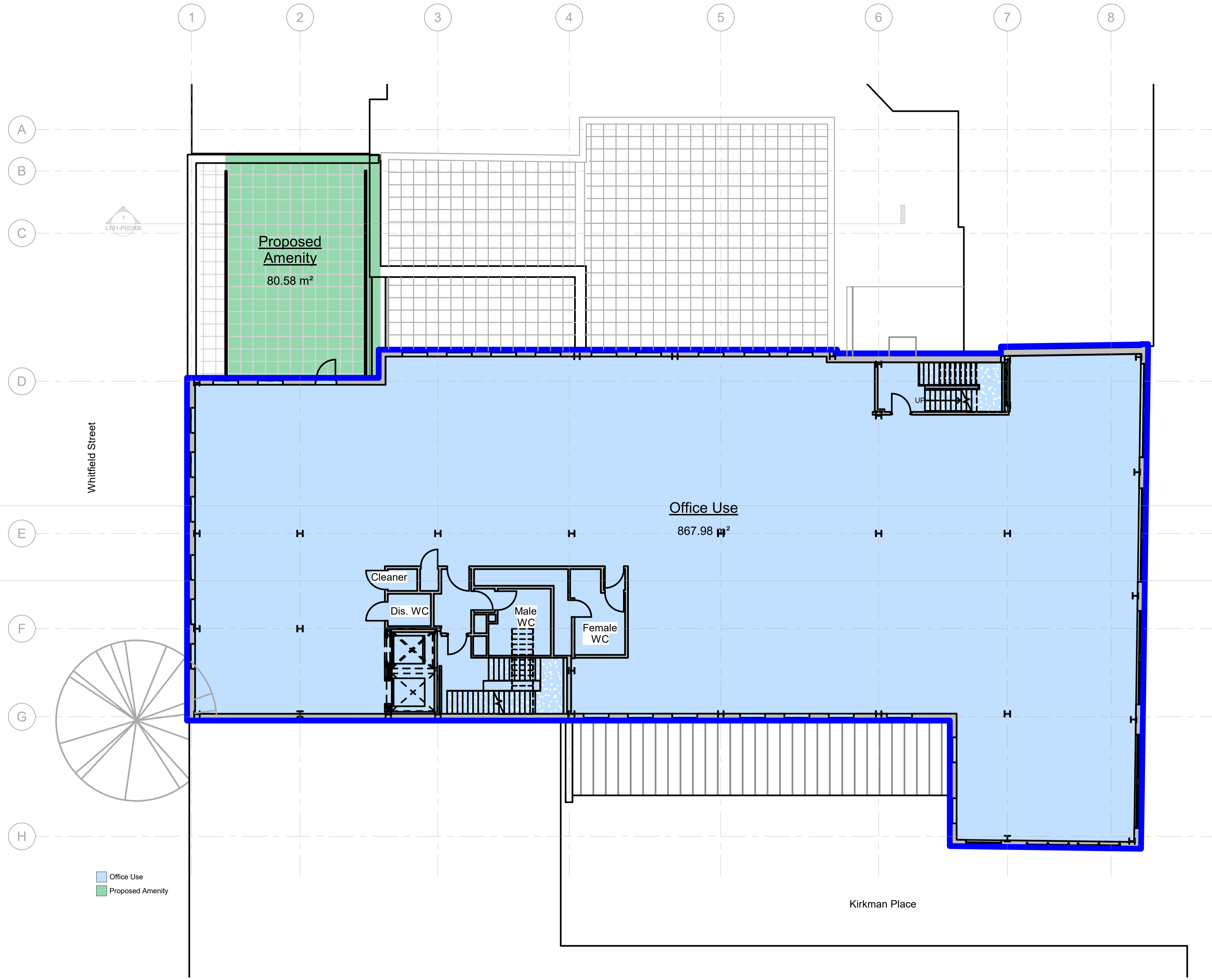
PLANNING











■ Office Use
■ Proposed Amenity

This drawing is copyright. This drawing must not be scaled. Figured dimensions, levels etc. are only to be used. Any inaccuracies, etc must be notified to the architect. Detail drawings and larger scale drawings take precedence over smaller scaled drawings.

| Revision | Date | Description |
|----------|------------|------------------------------------|
| A | 06/06/22 | First Issue |
| B | 14/06/22 | Project title and red line revised |
| C | 25/07/2022 | Level 03 balustrade set back |

PLANNING

Project: **16-24 Whitfield Street London. W1T 2RA. Extension and Alteration - Planning Application.**
 Title: **Proposed Third Floor Plan**

Number: L761-P(0)433
 Scale (@ A1): 1:100
 Date: 06/06/2022
 Drawn: OW
 Checked:

studio cf
 Trafalgar House
 Unit B - C, Juniper Drive
 London, SW18 1GY
 020 7938 2464
 projects@studiocf.co.uk
 www.studiocf.co.uk