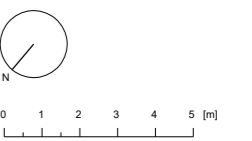
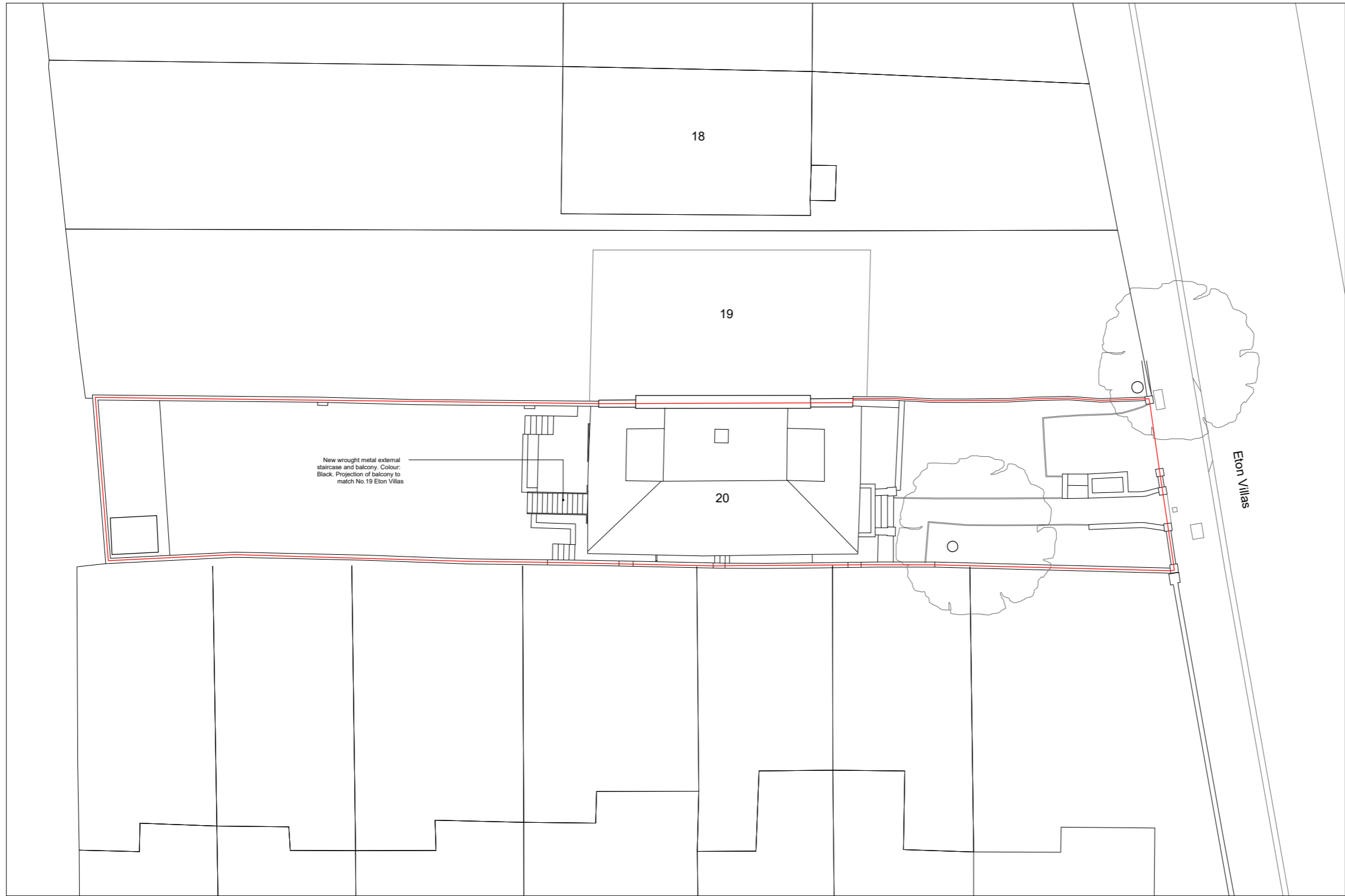


Issued
/ 18.11.21 Issued for planning
A 08.07.22 Amended for planning
B 10.07.22 Amended for planning

- Notes
- Existing
 - Proposed
 - Site boundary



20 Eton Villas

Proposed

097-A-001

Site Plan

18.11.21 1:200 @ A3

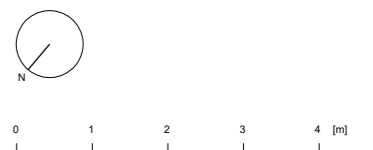
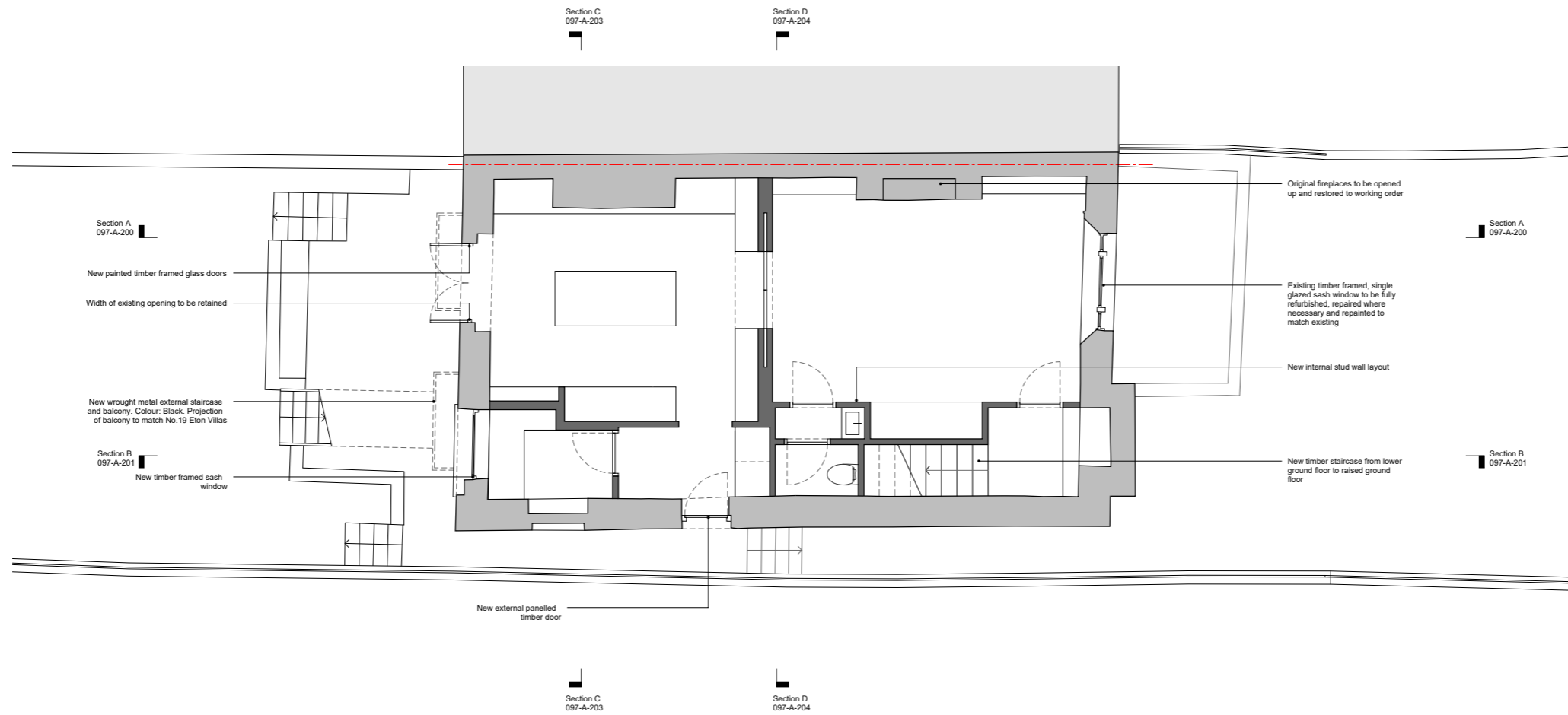
RC MC

HESSELBRAND

© Hesselbrand Ltd. All rights described in Chapter IV of the Copyright, Designs and Patents Act 1988 have been asserted. The drawing is to be read in conjunction with specifications and all relevant drawings. Contractor to check all dimensions on site. Do not scale from this drawing. Hesselbrand Ltd is to be advised of any variation between the drawings and the site conditions.

Issued
 / 18.11.21 Issued for planning
 A 08.07.22 Amended for planning
 B 10.07.22 Amended for planning

Notes
 Existing
 Proposed



20 Eton Villas

Proposed

097-A-100

Lower Ground Floor Plan

18.11.21 1:100 @ A3

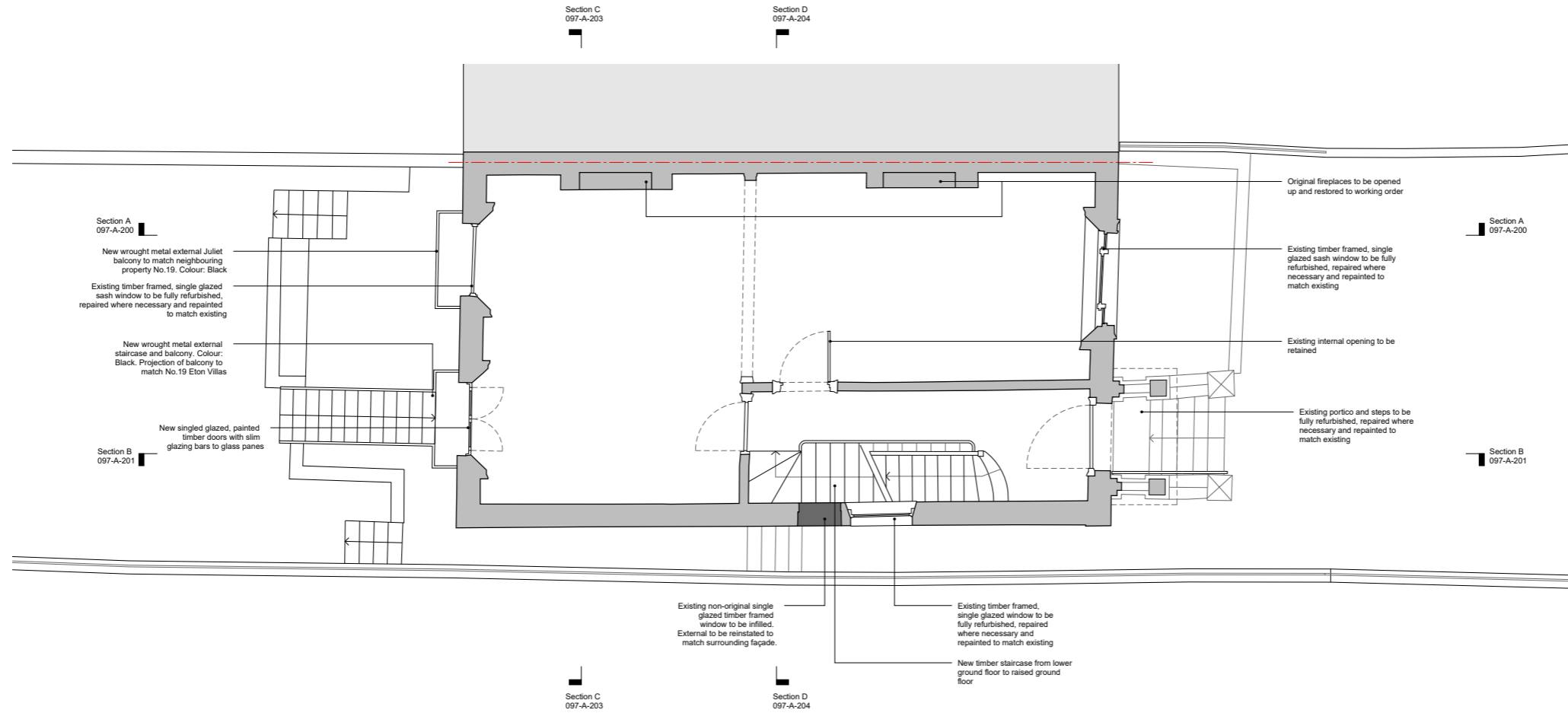
JW MC

HESSELBRAND

© Hesselbrand Ltd. All rights described in Chapter IV of the Copyright, Designs and Patents Act 1988 have been asserted. The drawing is to be read in conjunction with specifications and all relevant drawings. Contractor to check all dimensions on site. Do not scale from this drawing. Hesselbrand Ltd is to be advised of any variation between the drawings and the site conditions.

Issued
 / 18.11.21 Issued for planning
 A 08.07.22 Amended for planning
 B 10.07.22 Amended for planning

Notes
 Existing
 Proposed



20 Eton Villas

Proposed

097-A-101

Raised Ground Floor Plan

18.11.21 1:100 @ A3

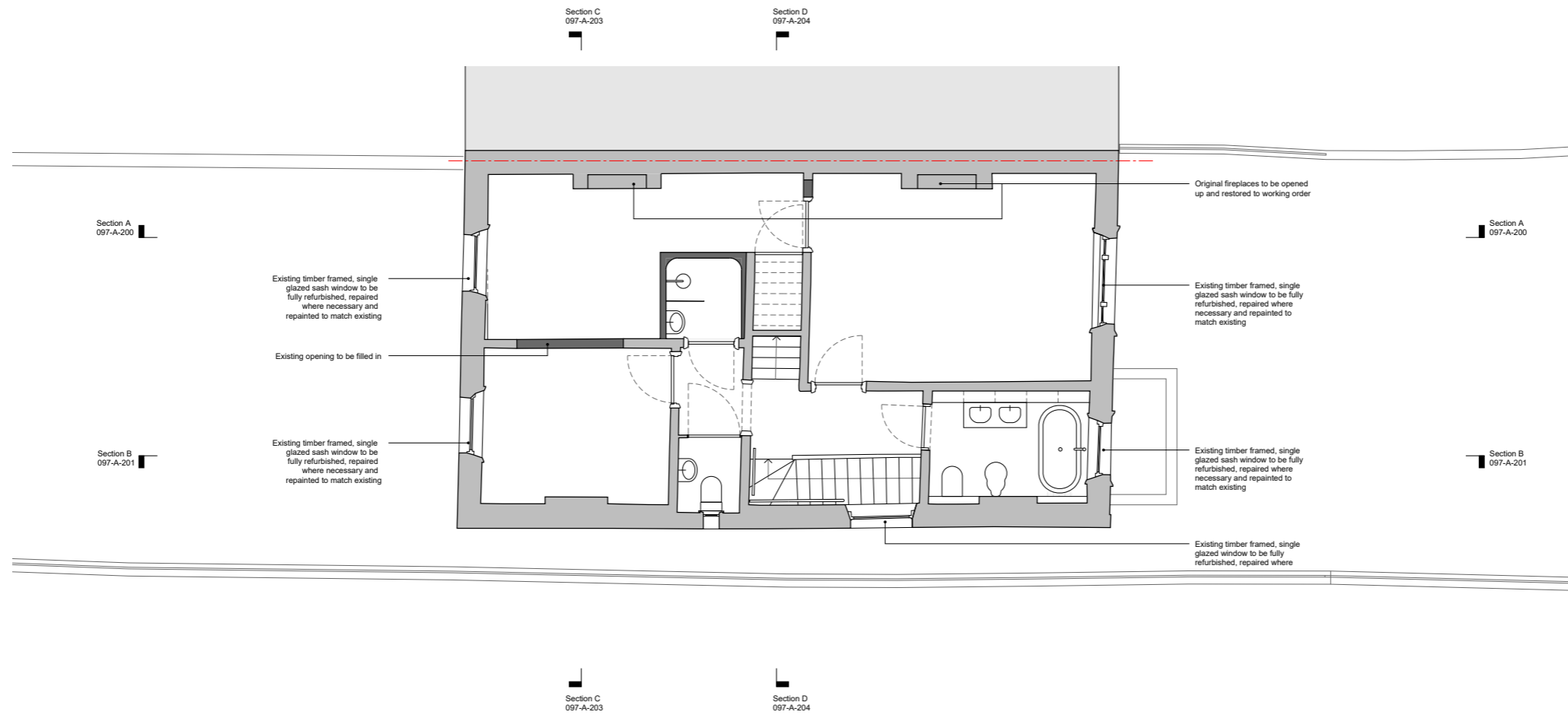
JW MC

HESSELBRAND

© Hesselbrand Ltd. All rights described in Chapter IV of the Copyright, Designs and Patents Act 1988 have been asserted. The drawing is to be read in conjunction with specifications and all relevant drawings. Contractor to check all dimensions on site. Do not scale from this drawing. Hesselbrand Ltd is to be advised of any variation between the drawings and the site conditions.

Issued
 / 18.11.21 Issued for planning
 A 08.07.22 Amended for planning
 B 10.07.22 Amended for planning

Notes
 Existing
 Proposed



0 1 2 3 4 [m]

20 Eton Villas

Proposed

097-A-102

First Floor Plan

18.11.21 | 1:100 @ A3

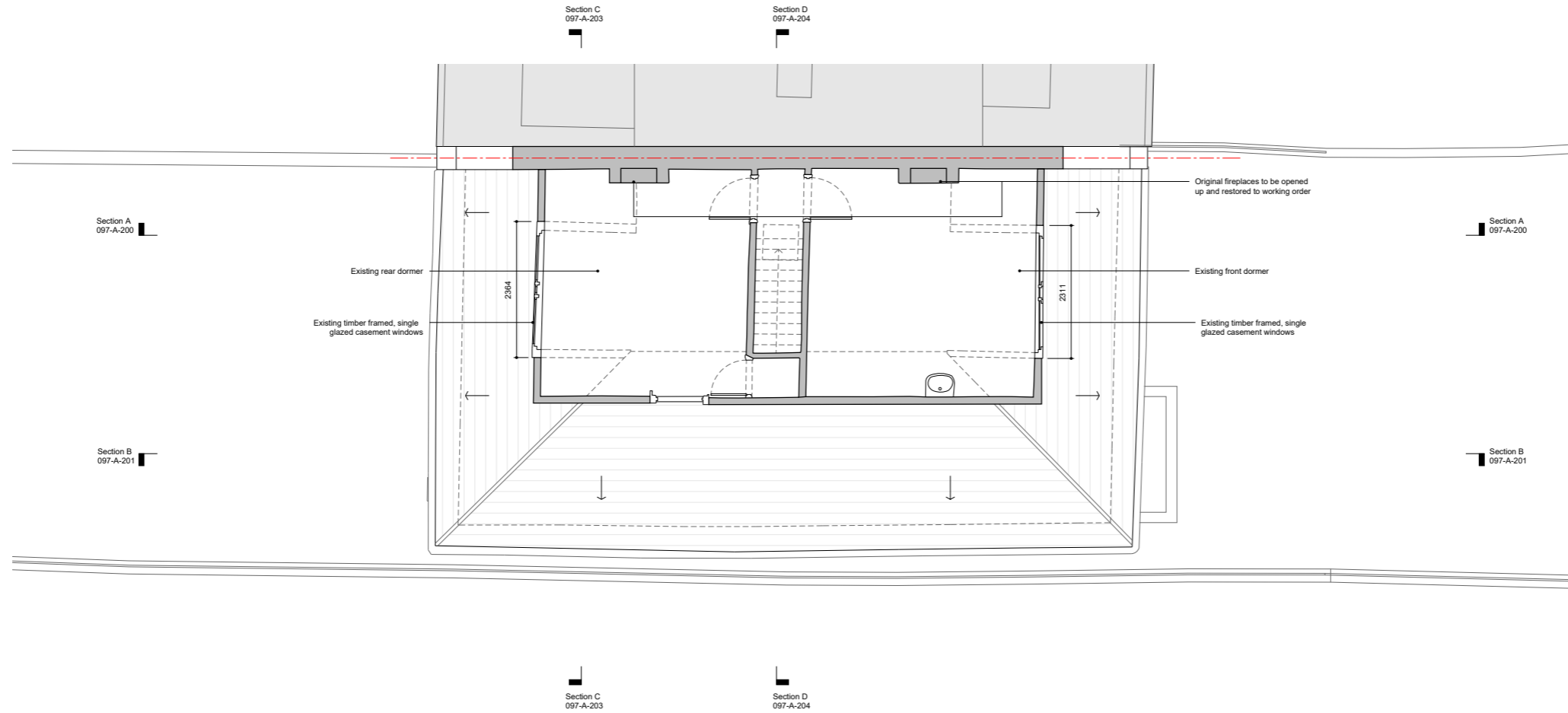
JW | MC

HESSELBRAND

© Hesselbrand Ltd. All rights described in Chapter IV of the Copyright, Designs and Patents Act 1988 have been asserted. The drawing is to be read in conjunction with specifications and all relevant drawings. Contractor to check all dimensions on site. Do not scale from this drawing. Hesselbrand Ltd is to be advised of any variation between the drawings and the site conditions.

Issued
 / 18.11.21 Issued for planning
 A 08.07.22 Amended for planning
 B 10.07.22 Amended for planning

Notes
 Existing
 Proposed



20 Eton Villas

Proposed

097-A-103

Second Floor Plan

18.11.21 | 1:100 @ A3

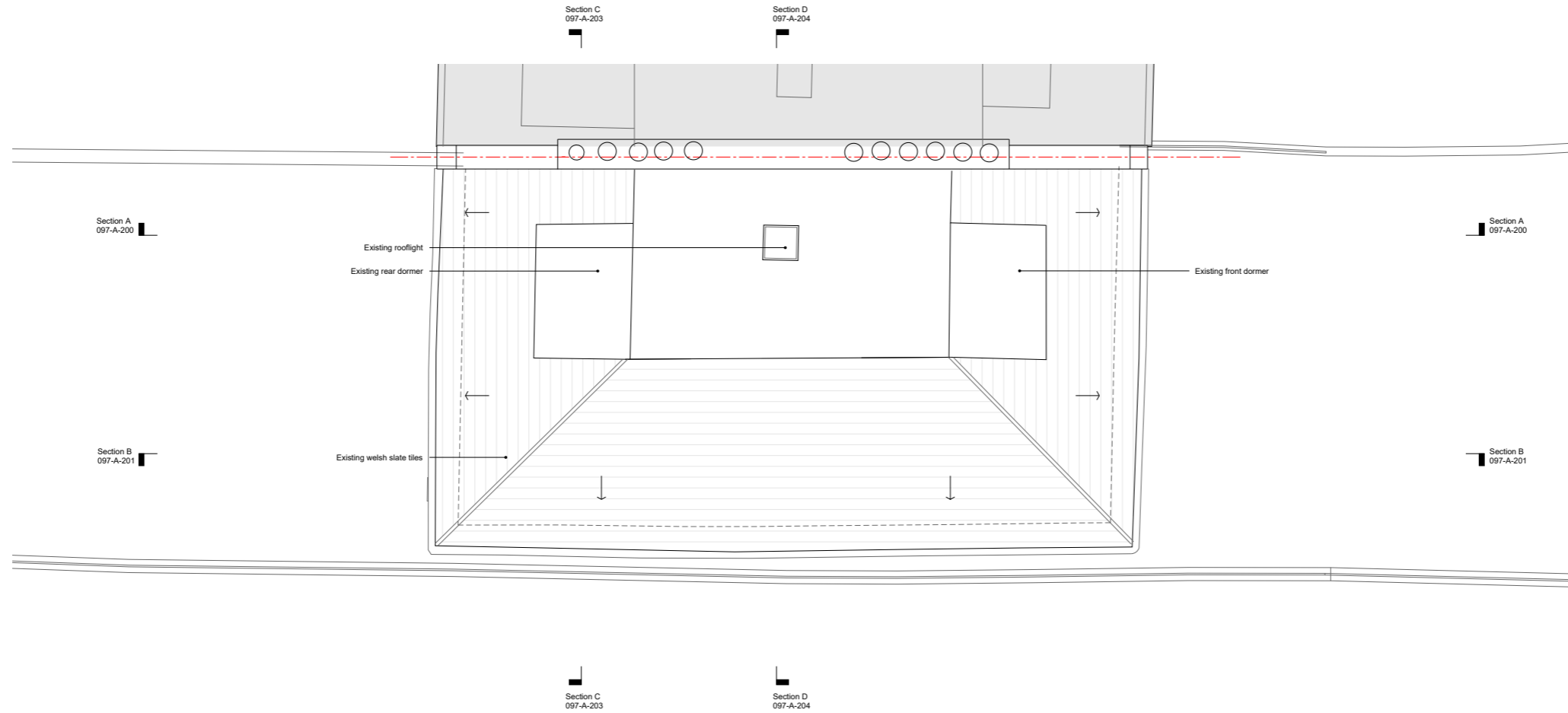
JW | MC

HESSELBRAND

© Hesselbrand Ltd. All rights described in Chapter IV of the Copyright, Designs and Patents Act 1988 have been asserted. The drawing is to be read in conjunction with specifications and all relevant drawings. Contractor to check all dimensions on site. Do not scale from this drawing. Hesselbrand Ltd is to be advised of any variation between the drawings and the site conditions.

Issued
 / 18.11.21 Issued for planning
 A 08.07.22 Amended for planning
 B 10.07.22 Amended for planning

Notes
 Existing
 Proposed



0 1 2 3 4 [m]

20 Eton Villas

Proposed

097-A-104

Roof Plan

18.11.21 | 1:100 @ A3

JW | MC

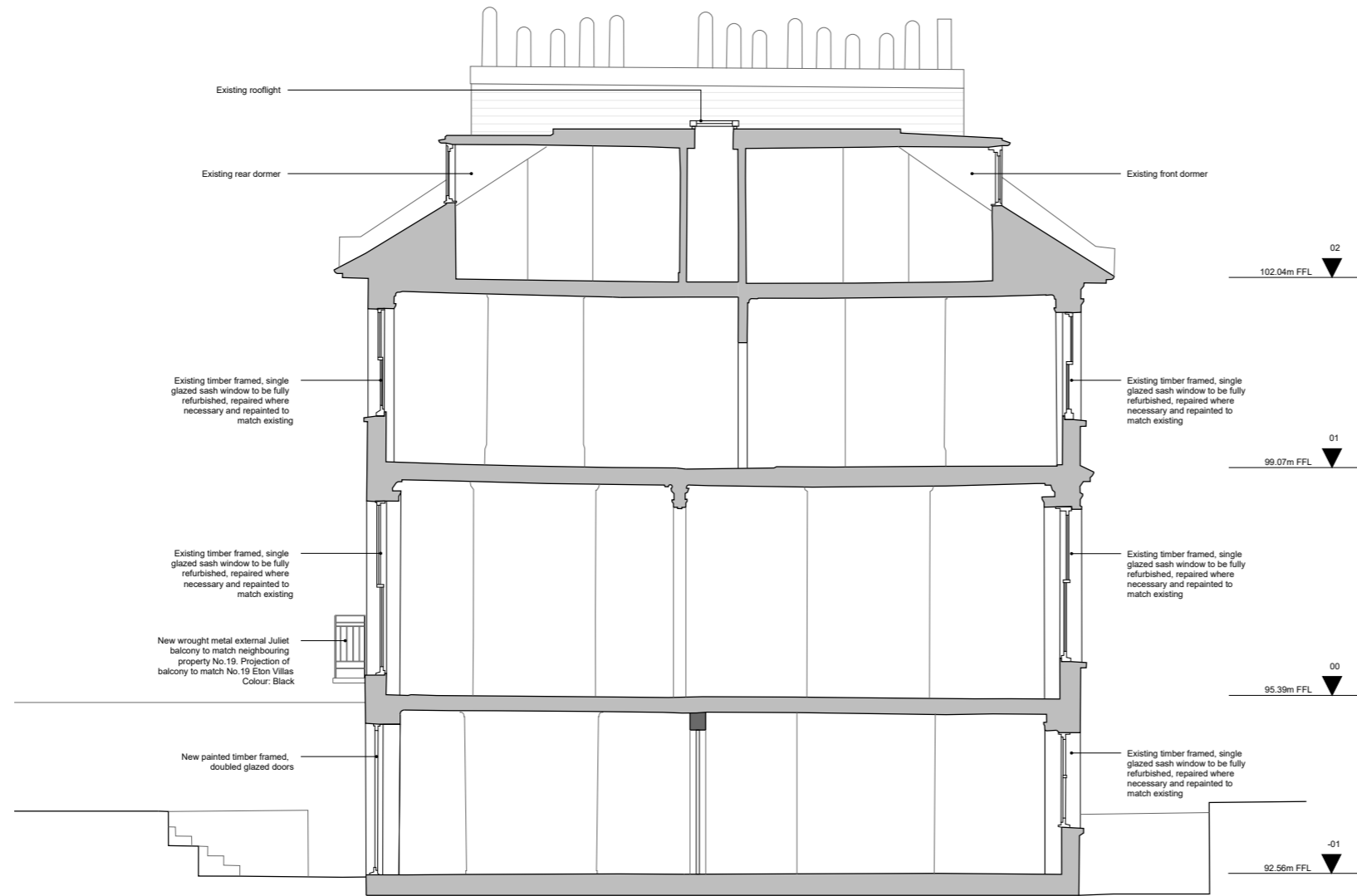
HESSELBRAND

© Hesselbrand Ltd. All rights described in Chapter IV of the Copyright, Designs and Patents Act 1988 have been asserted. The drawing is to be read in conjunction with specifications and all relevant drawings. Contractor to check all dimensions on site. Do not scale from this drawing. Hesselbrand Ltd is to be advised of any variation between the drawings and the site conditions.

Issued
 / 18.11.21 Issued for planning
 A 08.07.22 Amended for planning
 B 10.07.22 Amended for planning

Notes

- Existing
- Proposed



S1 Section AA



20 Eton Villas

Proposed

097-A-200

Section AA

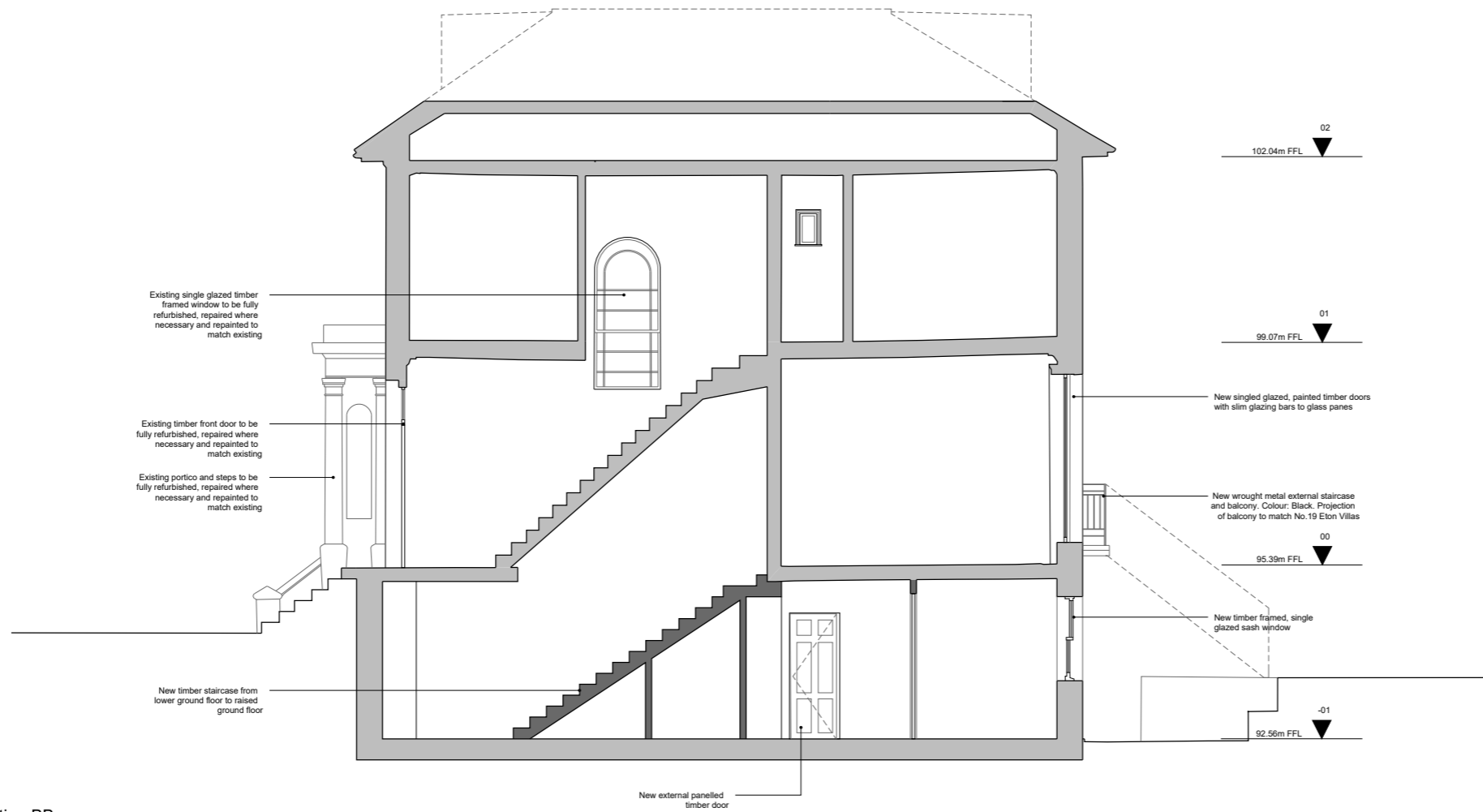
18.11.21 | 1:100 @ A3

JW | MC

HESSELBRAND

Issued
 / 18.11.21 Issued for planning
 A 08.07.22 Amended for planning
 B 10.07.22 Amended for planning

Notes
 Existing
 Proposed



S2 Section BB

0 1 2 3 4 [m]

20 Eton Villas

Proposed

097-A-201

Section BB

18.11.21 | 1:100 @ A3

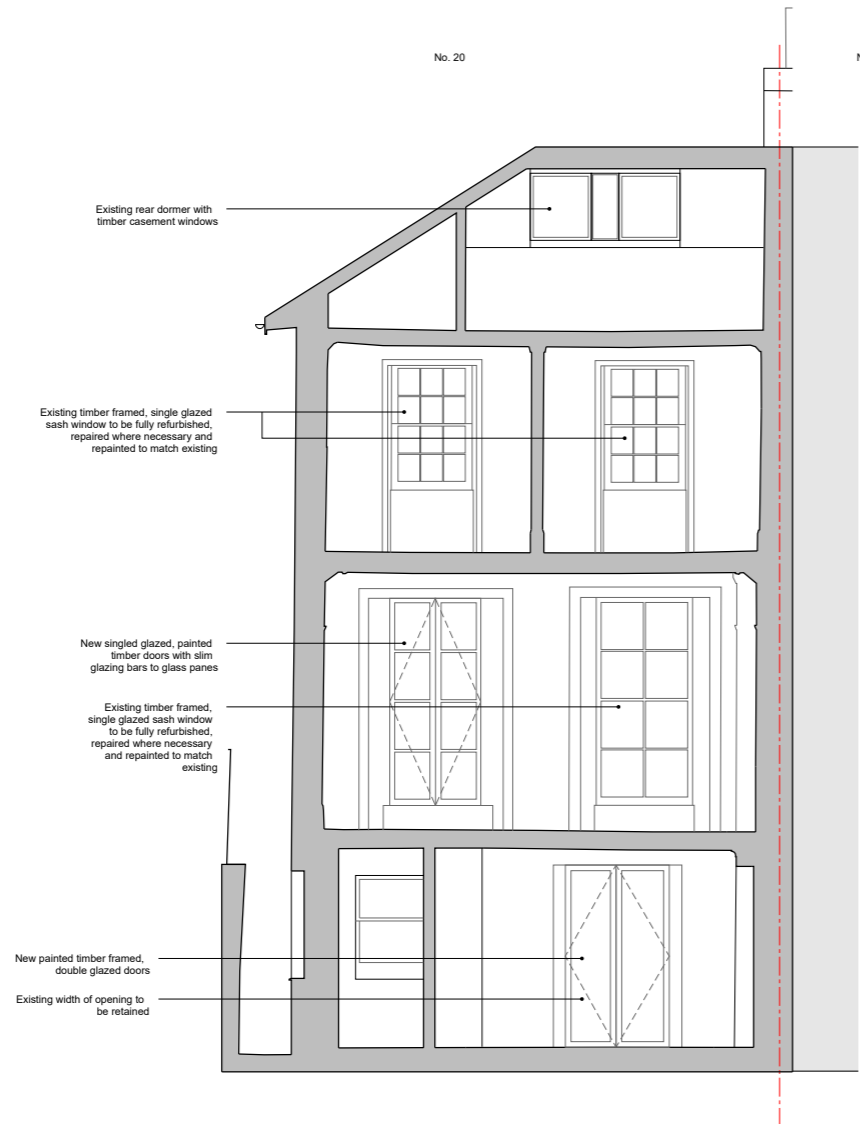
JW | MC

HESSELBRAND

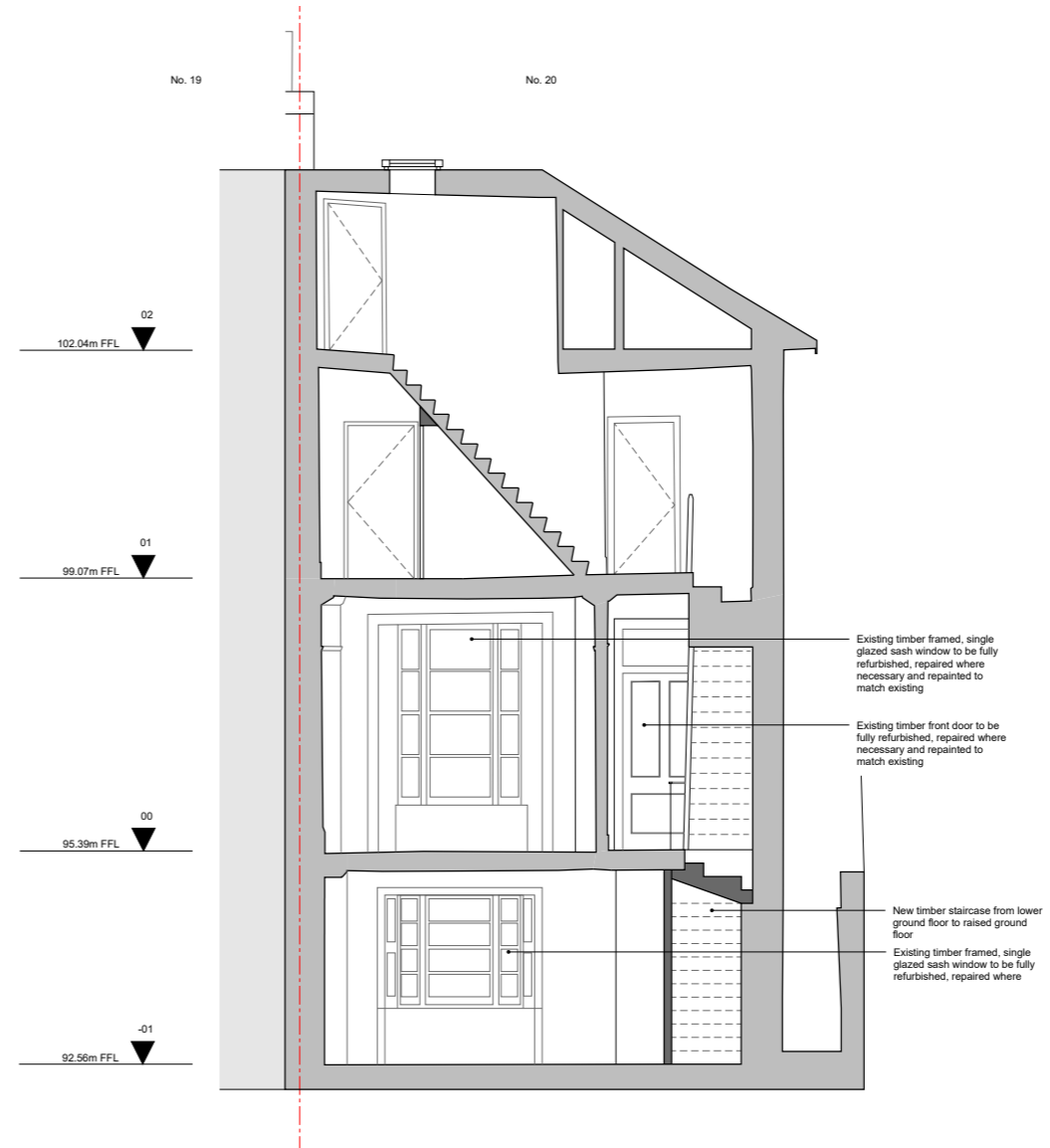
© Hesselbrand Ltd. All rights described in Chapter IV of the Copyright, Designs and Patents Act 1988 have been asserted. The drawing is to be read in conjunction with specifications and all relevant drawings. Contractor to check all dimensions on site. Do not scale from this drawing. Hesselbrand Ltd is to be advised of any variation between the drawings and the site conditions.

Issued
 / 18.11.21 Issued for planning
 A 08.07.22 Amended for planning
 B 10.07.22 Amended for planning

Notes
 Existing
 Proposed



S3 Section CC



S4 Section DD



20 Eton Villas

Proposed

097-A-202

Section CC & DD

18.11.21 1:100 @ A3

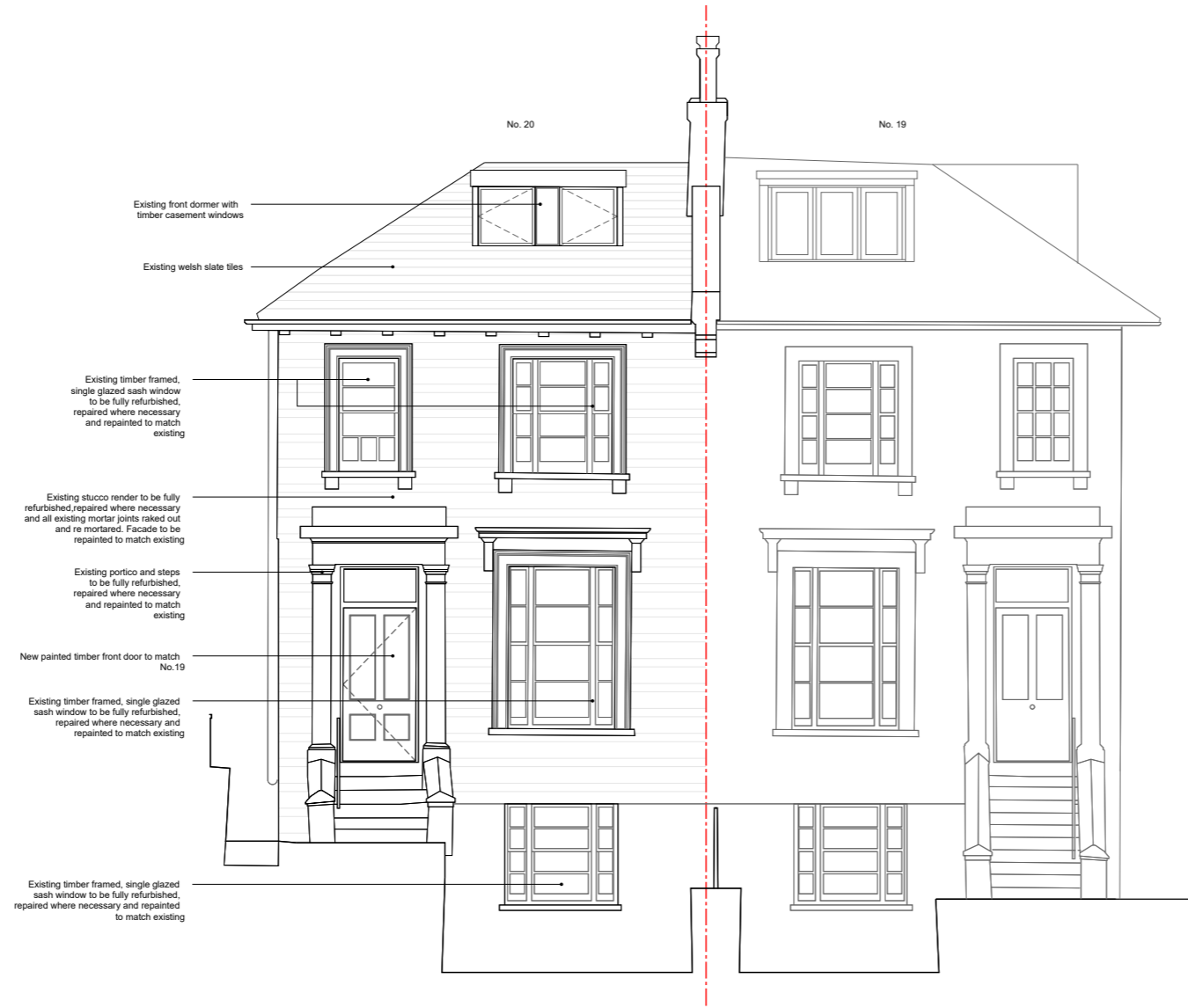
JW MC

HESSELBRAND

© Hesselbrand Ltd. All rights described in Chapter IV of the Copyright, Designs and Patents Act 1988 have been asserted. The drawing is to be read in conjunction with specifications and all relevant drawings. Contractor to check all dimensions on site. Do not scale from this drawing. Hesselbrand Ltd is to be advised of any variation between the drawings and the site conditions.

Issued
 / 18.11.21 Issued for planning
 A 08.07.22 Amended for planning
 B 10.07.22 Amended for planning

Notes
 Existing
 Proposed



20 Eton Villas
 Proposed

097-A-300

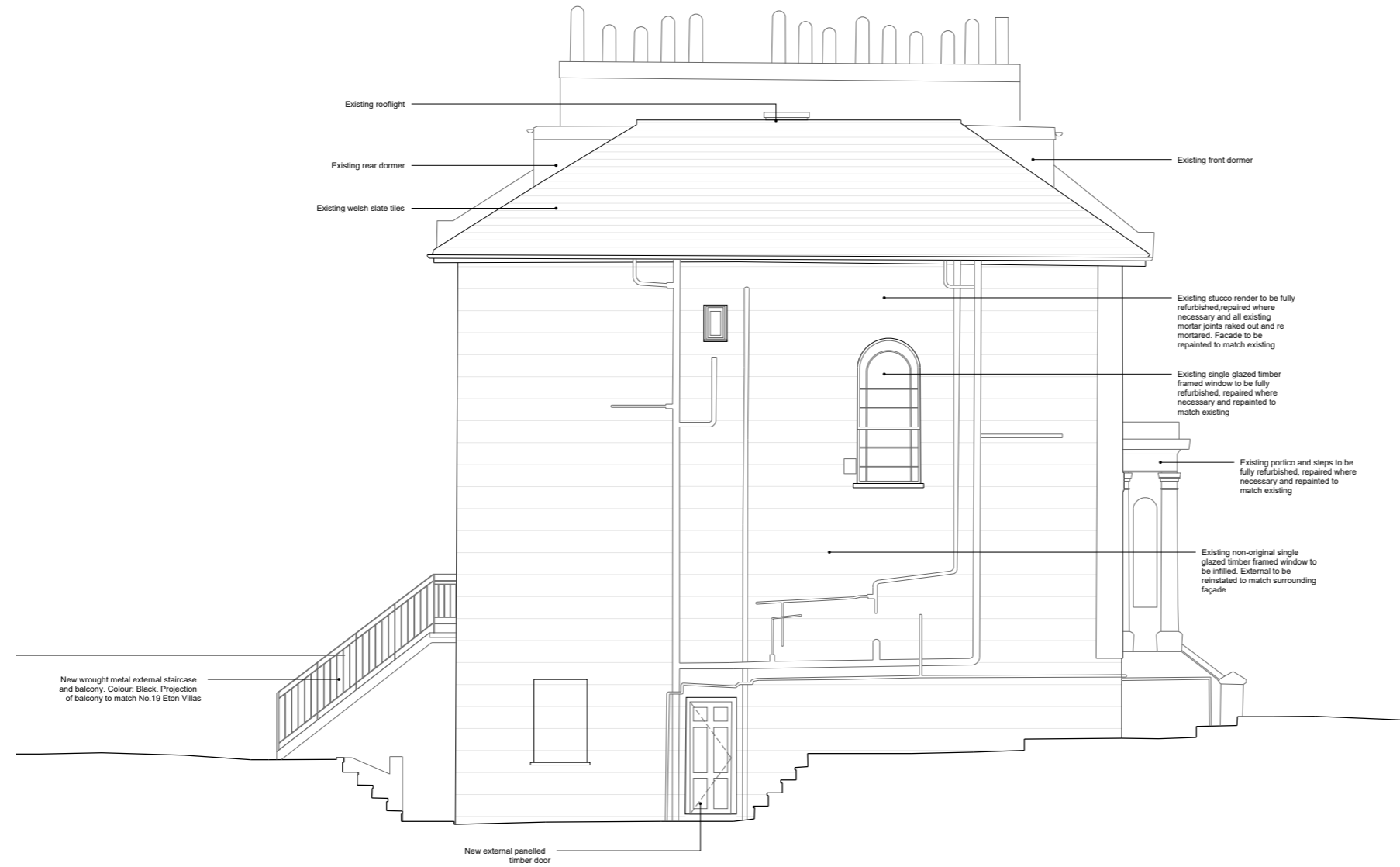
Front Elevation
 18.11.21 | 1:100 @ A3
 JW | MC

HESSELBRAND

© Hesselbrand Ltd. All rights described in Chapter IV of the Copyright, Designs and Patents Act 1988 have been asserted. The drawing is to be read in conjunction with specifications and all relevant drawings. Contractor to check all dimensions on site. Do not scale from this drawing. Hesselbrand Ltd is to be advised of any variation between the drawings and the site conditions.

Issued
 / 18.11.21 Issued for planning
 A 08.07.22 Amended for planning
 B 10.07.22 Amended for planning

Notes
 Existing
 Proposed



20 Eton Villas

Proposed

097-A-301

Side Elevation

18.11.21 | 1:100 @ A3

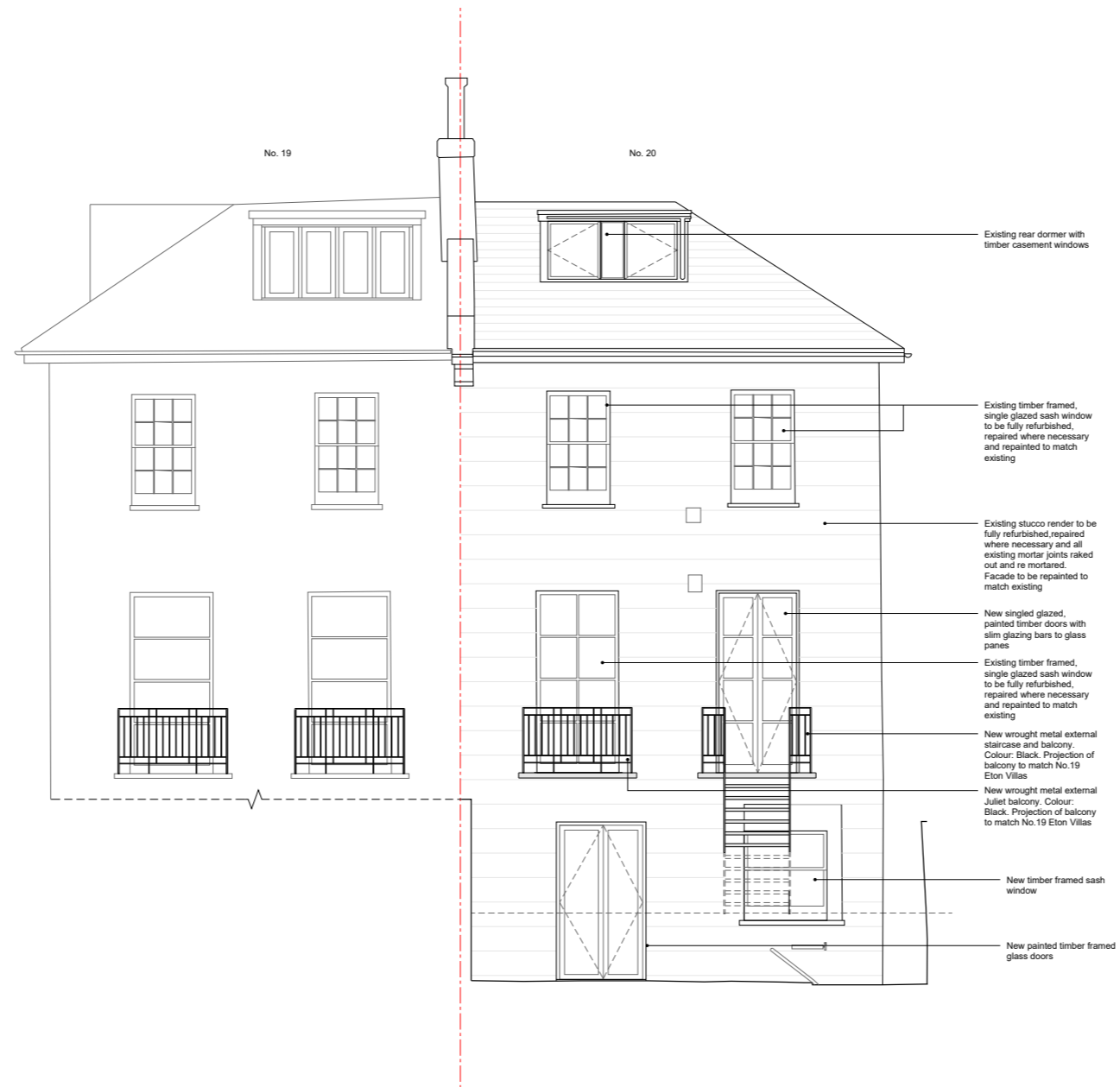
JW | MC

HESSELBRAND

Issued
 / 18.11.21 Issued for planning
 A 08.07.22 Amended for planning
 B 10.07.22 Amended for planning

Notes

- Existing
- Proposed



20 Eton Villas

Proposed

097-A-302

Rear Elevation

18.11.21 1:100 @ A3

JW MC

HESSELBRAND