



1

West Elevation

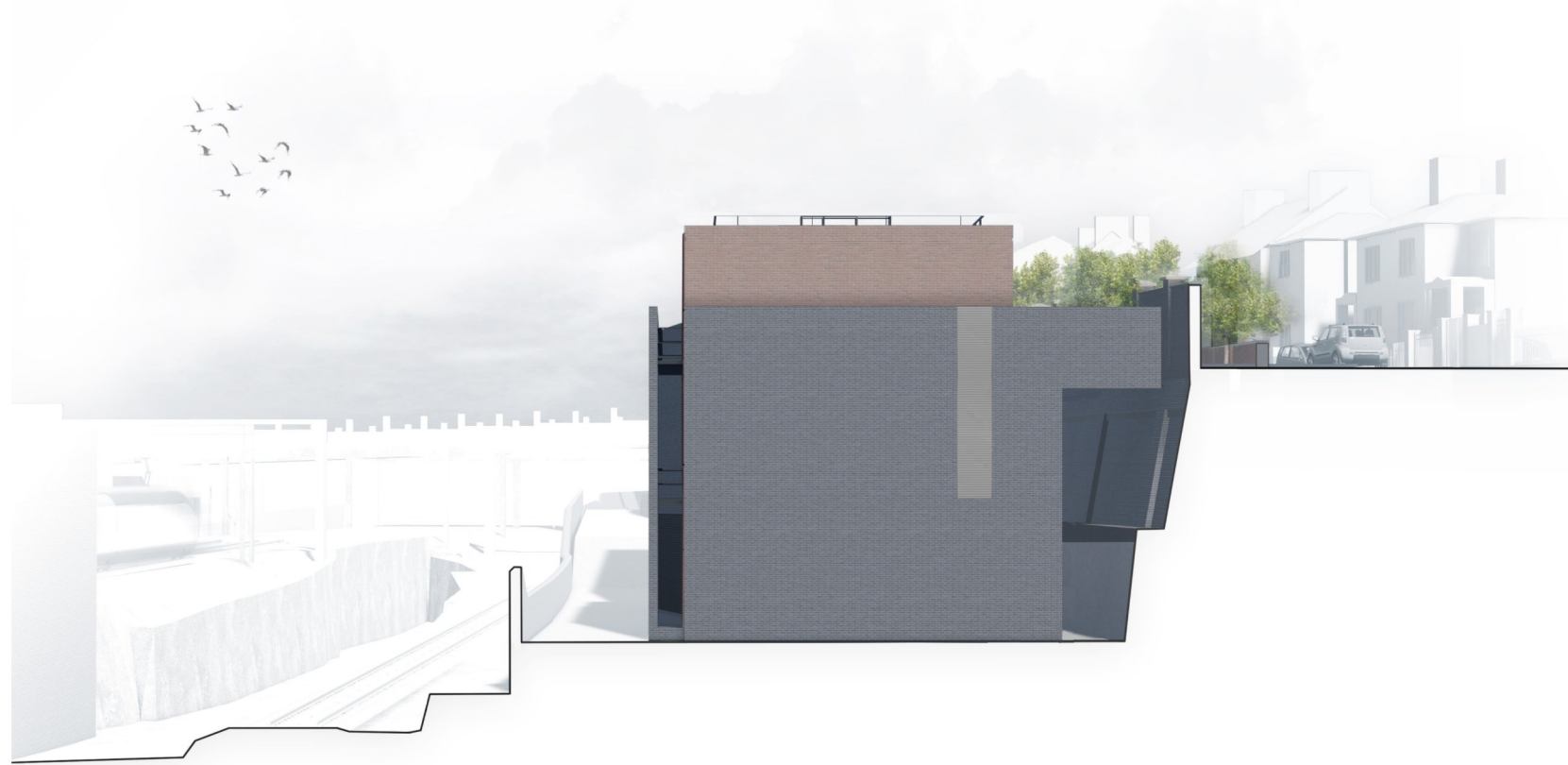
NTS



2

East Elevation

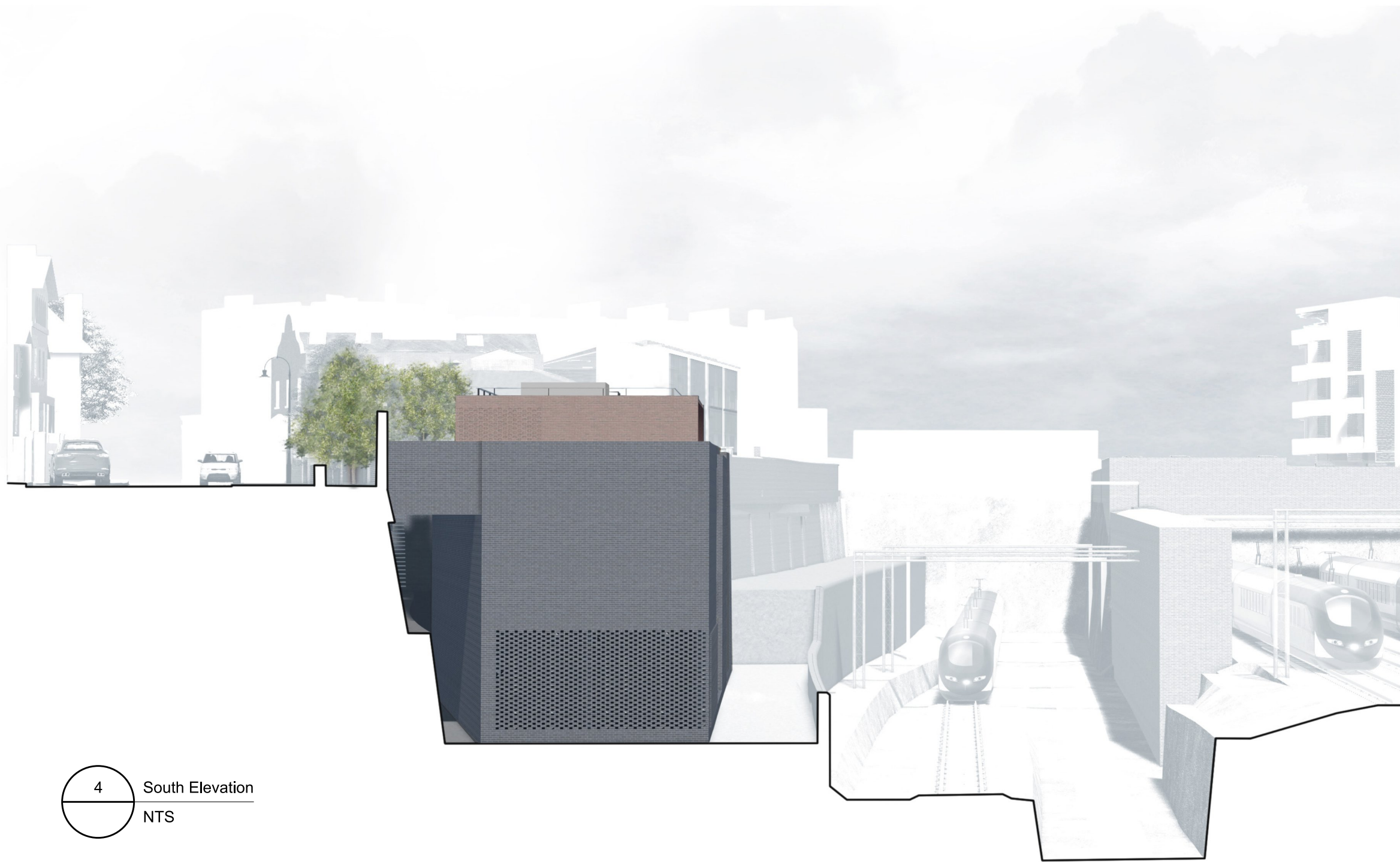
NTS



3

North Elevation

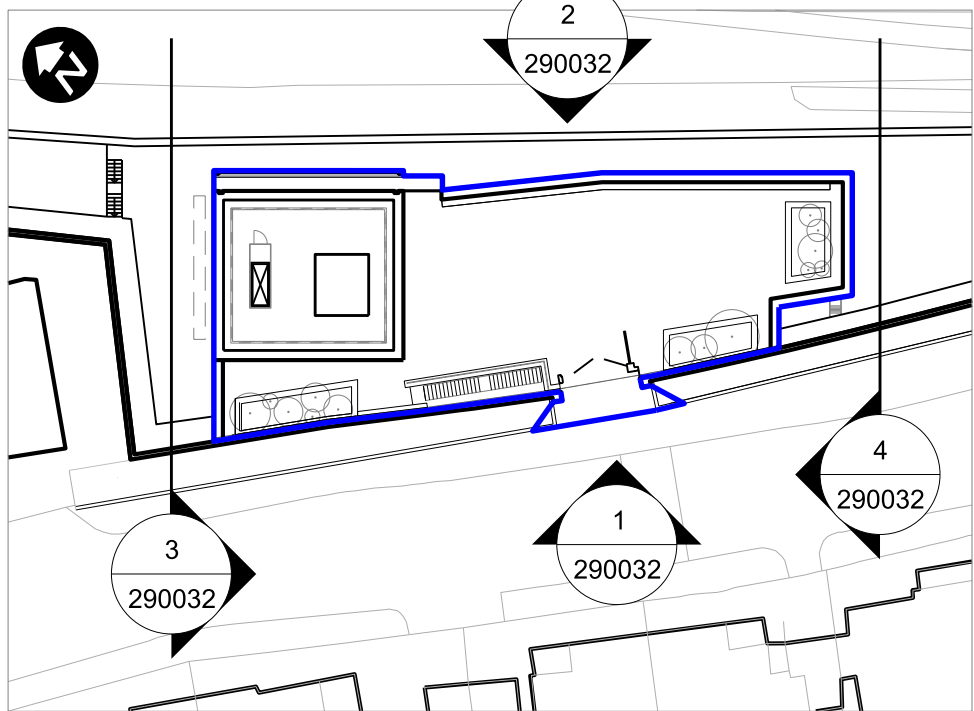
NTS



4

South Elevation

NTS



5

Keyplan

1:500

FOR INFORMATION

Schedule 17 Application Boundary

METRES @ 1:500

0

5

10

20

50

P03	ECS-CW_Schedule 17 LA Submission	JX	VD			HS2 accepts no responsibility for any circumstances which arise from the reproduction of this document after alteration, amendment or abbreviation or if it is issued in part or issued incompletely in any way.	<div>Legends/Notes:</div> <div>G1. All dimensions are in millimetres unless noted otherwise.</div> <div>G2. All levels are in metres relative to OD (Ordnance Datum, Newlyn) unless noted otherwise.</div> <div>G3. Chainages are expressed in metres and measured from Euston Station.</div> <div>G4. Global coordinates are indicated by Eastings (E) and Northings (N) to the project snake grid.</div> <div>G5. All angles are in degrees (0°-360°) unless noted otherwise.</div> <div>G6. Dimensions are not to be scaled from the drawing.</div> <div>G7. For the scope of works by the rail systems contractor, as indicatively shown on the drawings, refer to WI 100</div>
P04	ECS-MW_Schedule 17 LA Submission	JL	VD			© Crown Copyright and database right 2018. All rights reserved. Ordnance Survey Licence number 100049190	
P05	ECS-MW_Schedule 17 Final Submission	DK	KM			© Crown Copyright material is reproduced with the permission of Land Registry under delegated authority from the Controller of HMSO. This material was last updated on 2018 and may not be copied, distributed, sold or published without the formal permission of Land Registry. Only an official copy of a title plan or register obtained from the Land Registry may be used for legal or other official purposes.	
P06	ECS-MW_Schedule 17 Final Re-Subm.	JL	KM				
C01	ECS-MW_Schedule 17 Final Re-Subm.	JL	KM	FW			
Rev	Description	Drawn	Checked	Con App	HS2 App	Scale with caution as distortion can occur.	

HS2

Registered in England Registration No. 06791686

Registered office: 2 Snow Hill, Queensway, Birmingham, B4 6GA

OFFICIAL

Creator/Originator

SCS JV - Design House

Zone	Euston Cavern Shaft	Project/Contract		HS2-MWCC SCS Sector S1	
Design Stage	Detail Design	Discipline/Function		Architectural	
Drawing Title	Euston Cavern Shaft	Drawn	Checked	Approved	
	Schedule 17 Plans and Specifications	J Ip	K Machule		D Lewin
	Illustrated Elevations	Date	Scale	Size	
	For Information	28/07/22	NTS	A1	
		Drawing No.			Rev.
		1MC03-SCJ_SDH-AR-DPH-SS01_SL03-290032			C01

FOR INFORMATION