

HS2 Asset ID

HS2-00002657W

Suitability

A4

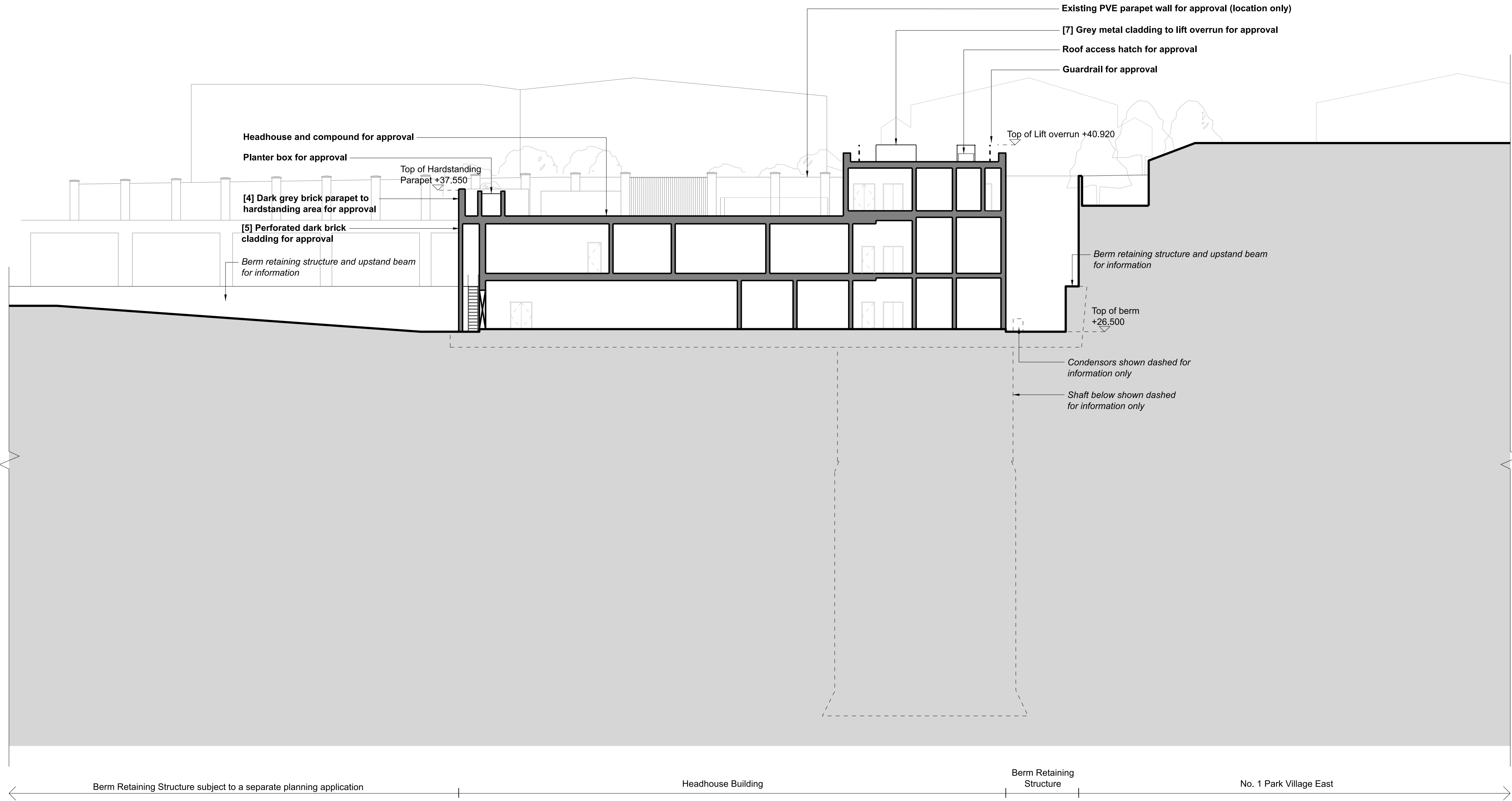
1

290022

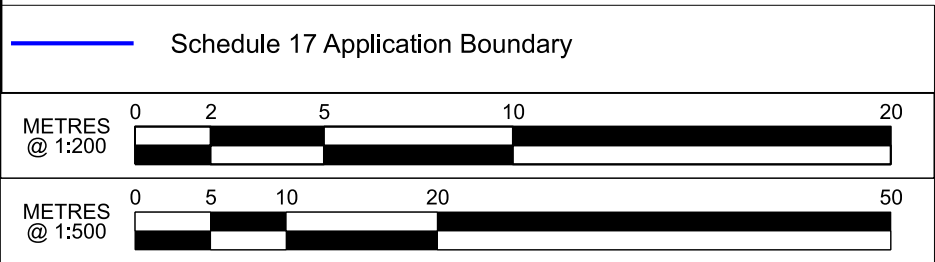
2

Keyplan

1:500



1 Longitudinal Section
1:200



P03	ECS-CW_Schedule 17 LA Submission	JX	VD			HS2 accepts no responsibility for any circumstances which arise from the reproduction of this document after alteration, amendment or abbreviation or if it is issued in part or issued incompletely in any way.
P04	ECS-MW_Schedule 17 LA Submission	JL	VD			© Crown Copyright and database right 2018. All rights reserved. Ordnance Survey Licence number 100049190
P05	ECS-MW_Schedule 17 Final Submission	DK	KM			© Crown Copyright material is reproduced with the permission of Land Registry under delegated authority from the Controller of HMSO.
P06	ECS-MW_Schedule 17 Final Re-Subm.	JL	KM			This material was last updated on 2018 and may not be copied, distributed, sold or published without the formal permission of Land Registry. Only an official copy of a title plan or register obtained from the Land Registry may be used for legal or other official purposes.
C01	ECS-MW_Schedule 17 Final Re-Subm.	JL	KM	FW		
Rev	Description	Drawn	Checked	Con App	HS2 App	Scale with caution as distortion can occur.

Legends/Notes:

G1. All dimensions are in millimetres unless noted otherwise.

G2. All levels are in metres relative to OD (Ordnance Datum, Newlyn) unless noted otherwise.

G3. Chainages are expressed in metres and measured from Euston Station.

G4. Global coordinates are indicated by Eastings (E) and Northings (N) to the project snake grid.

G5. All angles are in degrees (0°-360°) unless noted otherwise.

G6. Dimensions are not to be scaled from the drawing.

G7. For the scope of works by the rail systems contractor, as indicatively shown on the drawings, refer to WI 100

G8. Materials references indicated by [X] please refer to 1MC03-SCJ_SDH-AR-DPH-SS01_SL03-290091

HS2

Registered in England Registration No. 06791686
Registered office: 2 Snow Hill, Queensway, Birmingham, B4 6GA

OFFICIAL

Creator/Originator

SCS JV - Design House

Zone		Project/Contract		
Euston Cavern Shaft		HS2-MWCC SCS Sector S1		
Design Stage		Discipline/Function		
Detail Design		Architectural		
Drawing Title		Drawn	Checked	Approved
Euston Cavern Shaft		J Ip	K Machule	D Lewin
Schedule 17 Plans and Specifications		Date	Scale	Size
Sections		28/07/22	AS SHOWN	A1
For Approval		Drawing No. 1MC03-SCJ_SDH-AR-DEL-SS01_SL03-290022		Rev. C01

ISSUED FOR ACCEPTANCE