

SECOND FLOOR PLAN



Openeight Architects
26 Craven Street
London WC2N 5NT
jcheung@openeightdesign.com

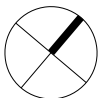
Project:
68 Neal Street

REV	DATE	DESCRIPTION
A	04.08.22	ISSUED FOR PLANNING (to supersede previously submitted scheme)

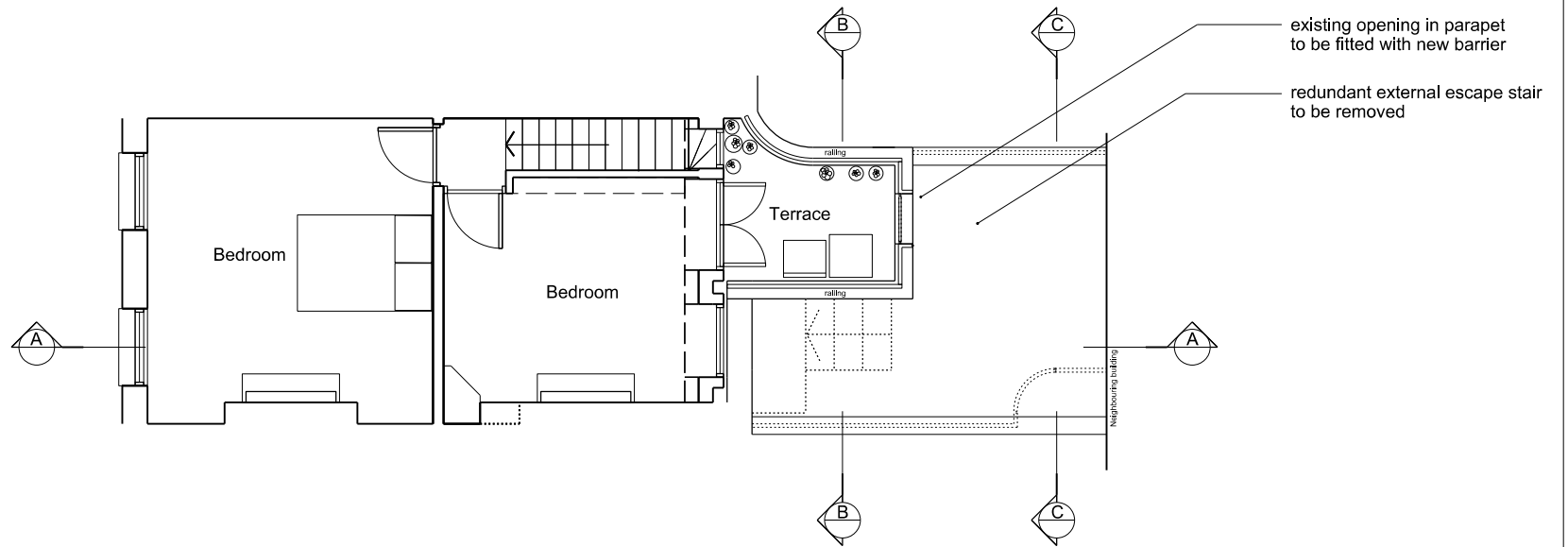
REV	DATE	DESCRIPTION

Proposed Second Floor Plan
Drawing No. 179.PP.202

Scale: 1:100 @ A4 / 1:50 @ A2



A
Revision



THIRD FLOOR PLAN



Openeight Architects
26 Craven Street
London WC2N 5NT
jcheung@openeightdesign.com

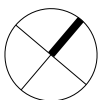
Project:
68 Neal Street

REV	DATE	DESCRIPTION
A	04.08.22	ISSUED FOR PLANNING (to supersede previously submitted scheme)

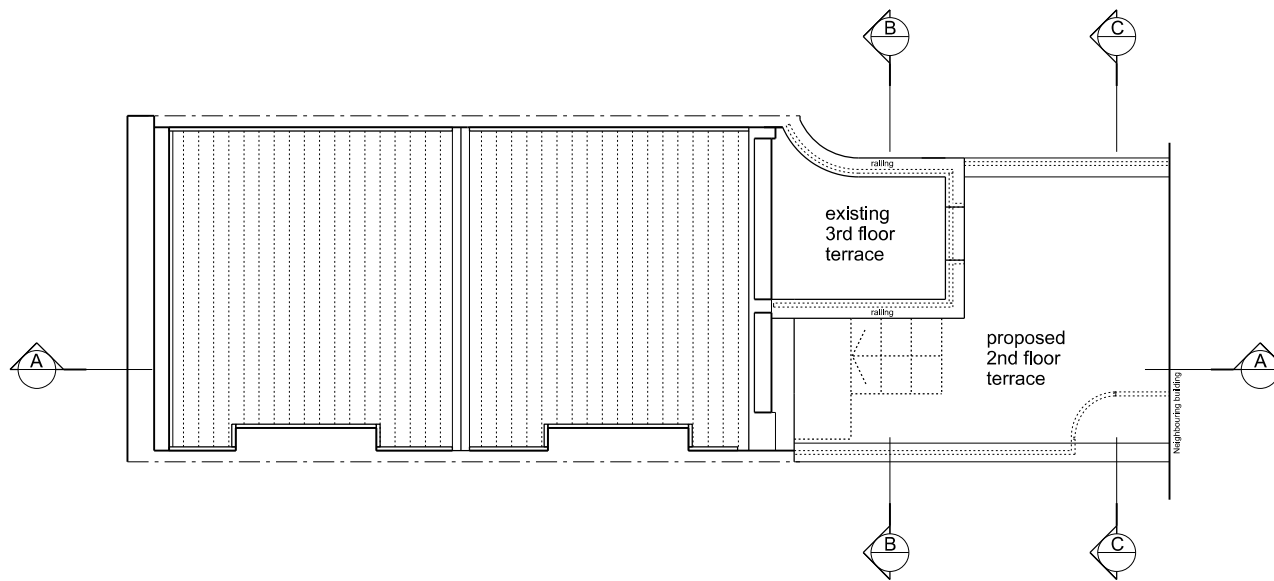
REV	DATE	DESCRIPTION

Proposed Third Floor Plan
Drawing No. 179.PP.203

Scale: 1:100 @ A4 / 1:50 @ A2



A
Revision



ROOF PLAN



Openeight Architects
 26 Craven Street
 London WC2N 5NT
 jcheung@openeightdesign.com

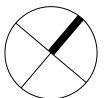
Project:
 68 Neal Street

REV	DATE	DESCRIPTION
A	04.08.22	ISSUED FOR PLANNING (to supersede previously submitted scheme)

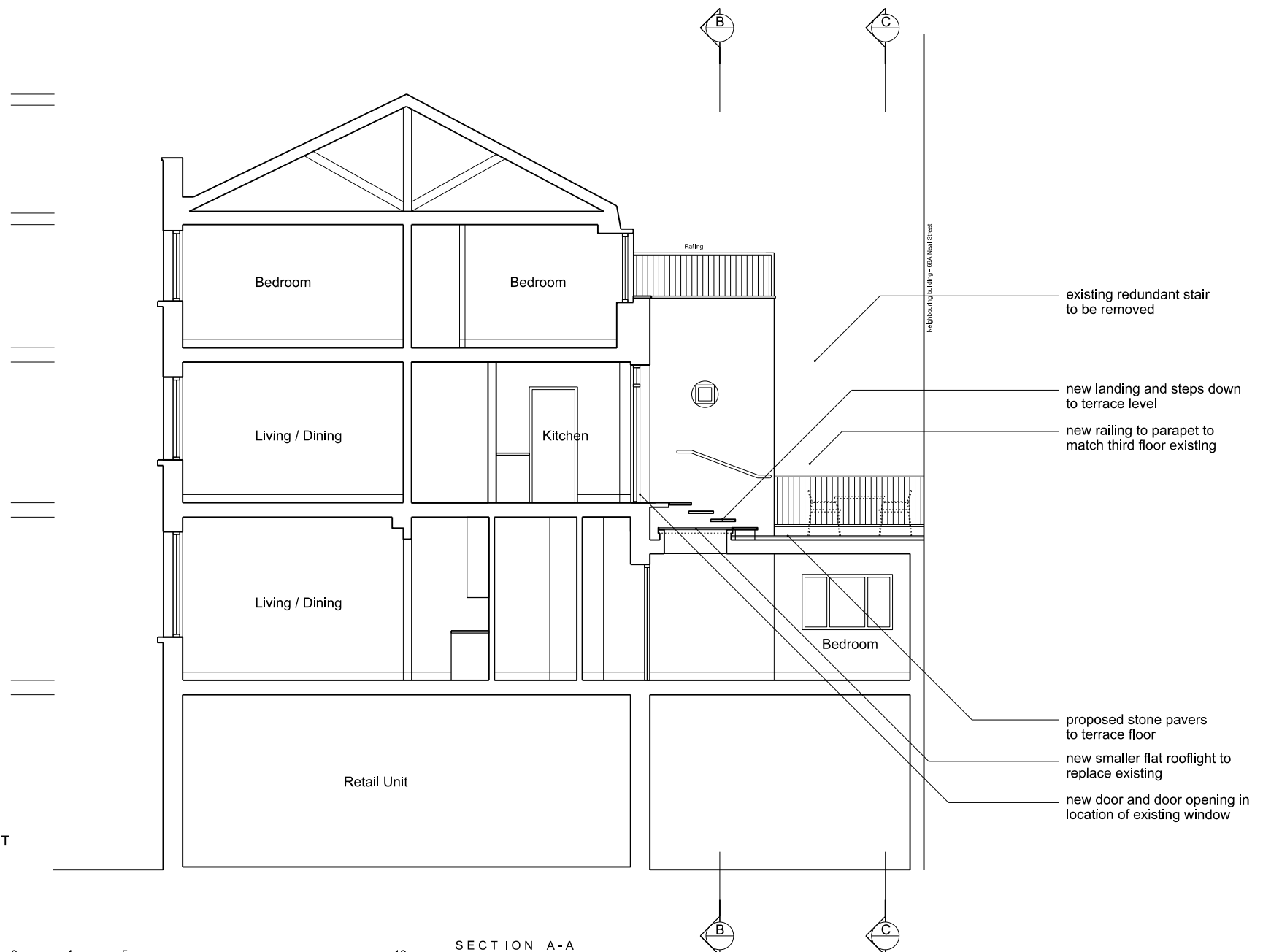
REV	DATE	DESCRIPTION

Proposed Roof Plan
 Drawing No. 179.PP.204

Scale: 1:100 @ A4 / 1:50 @ A2

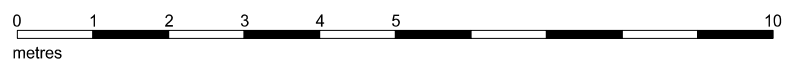


A
 Revision



NEIL STREET

SECTION A-A



Openeight Architects
 26 Craven Street
 London WC2N 5NT
 jcheung@openeightdesign.com

Project:
 68 Neal Street

REV	DATE	DESCRIPTION
A	04.08.22	ISSUED FOR PLANNING (to supersede previously submitted scheme)

REV	DATE	DESCRIPTION

Proposed Section A-A
 Drawing No. 179.PP.211

Scale: 1:100 @ A4 / 1:50 @ A2

A
 Revision

new door and door opening
in location of existing window
(white painted timber)

new railing to parapet to
match third floor existing

proposed stone pavers
to terrace floor

new landing and steps down
to terrace level

new smaller flat rooflight
to replace existing

new railing to parapet to
match third floor existing

new landing and steps down
to terrace level

gap to be filled in with
railing to match existing

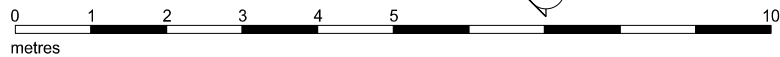
existing redundant
escape stair removed

new railing to parapet to
match third floor existing

proposed stone pavers
to terrace floor

SECTION B-B

SECTION C-C



Openeight Architects
26 Craven Street
London WC2N 5NT

jcheung@openeightdesign.com

Project:
68 Neal Street

REV	DATE	DESCRIPTION
A	04.08.22	ISSUED FOR PLANNING (to supersede previously submitted scheme)

REV	DATE	DESCRIPTION

Proposed Section B & C
Drawing No. 179.PP.212

Scale: 1:100 @ A4 / 1:50 @ A2

A
Revision





