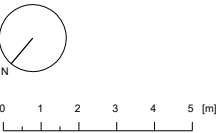
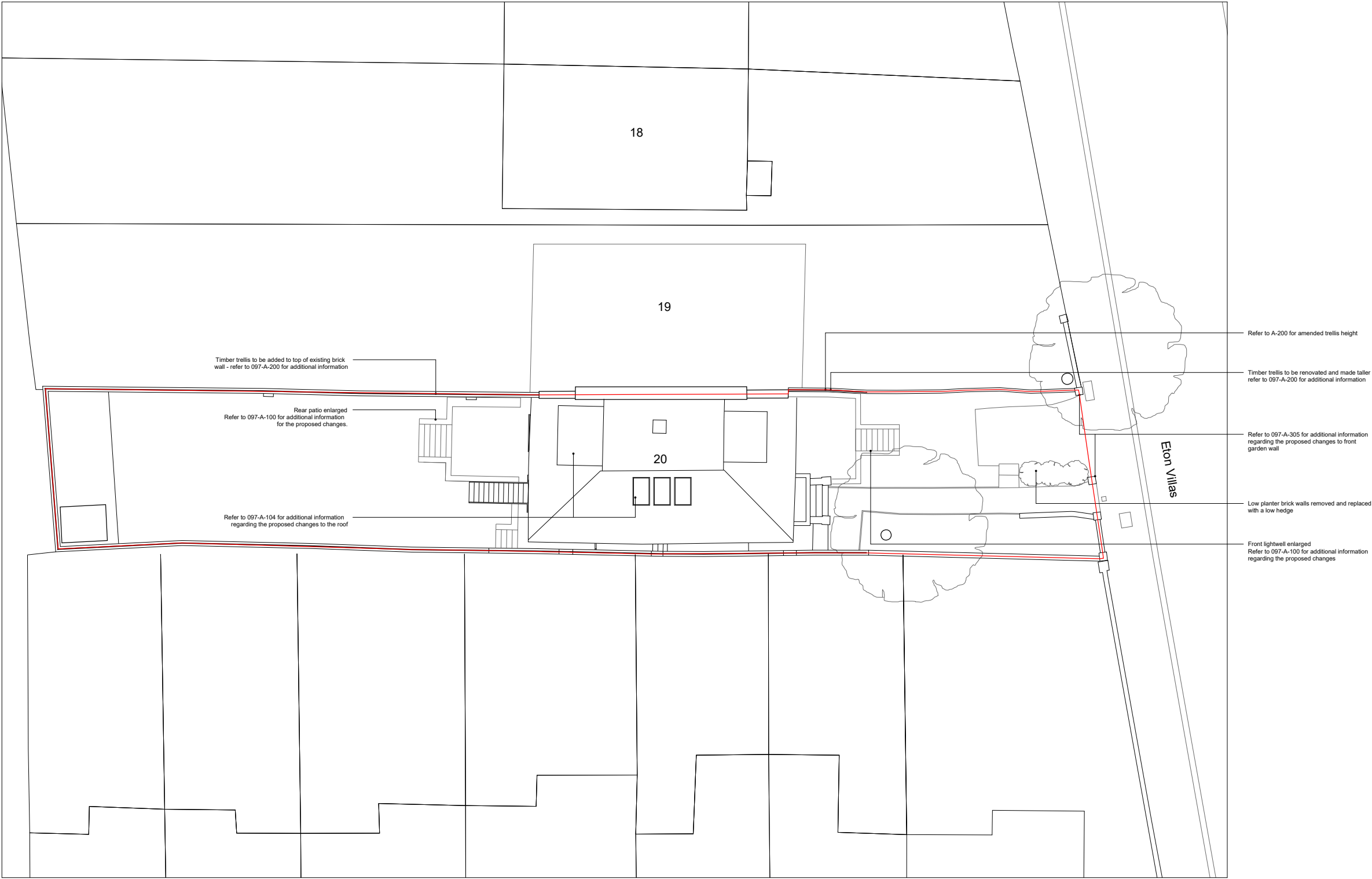


Issued		
/	23.11.21	Issued for planning
A	24.02.22	Amended for planning
B	08.07.22	Amended for planning
C	18.07.22	Amended for planning

- Notes
- Existing
 - Proposed
 - Site boundary



20 Eton Villas

Proposed

097-A-001

Site Plan

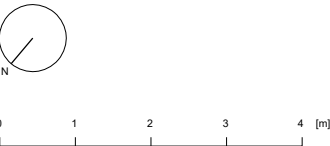
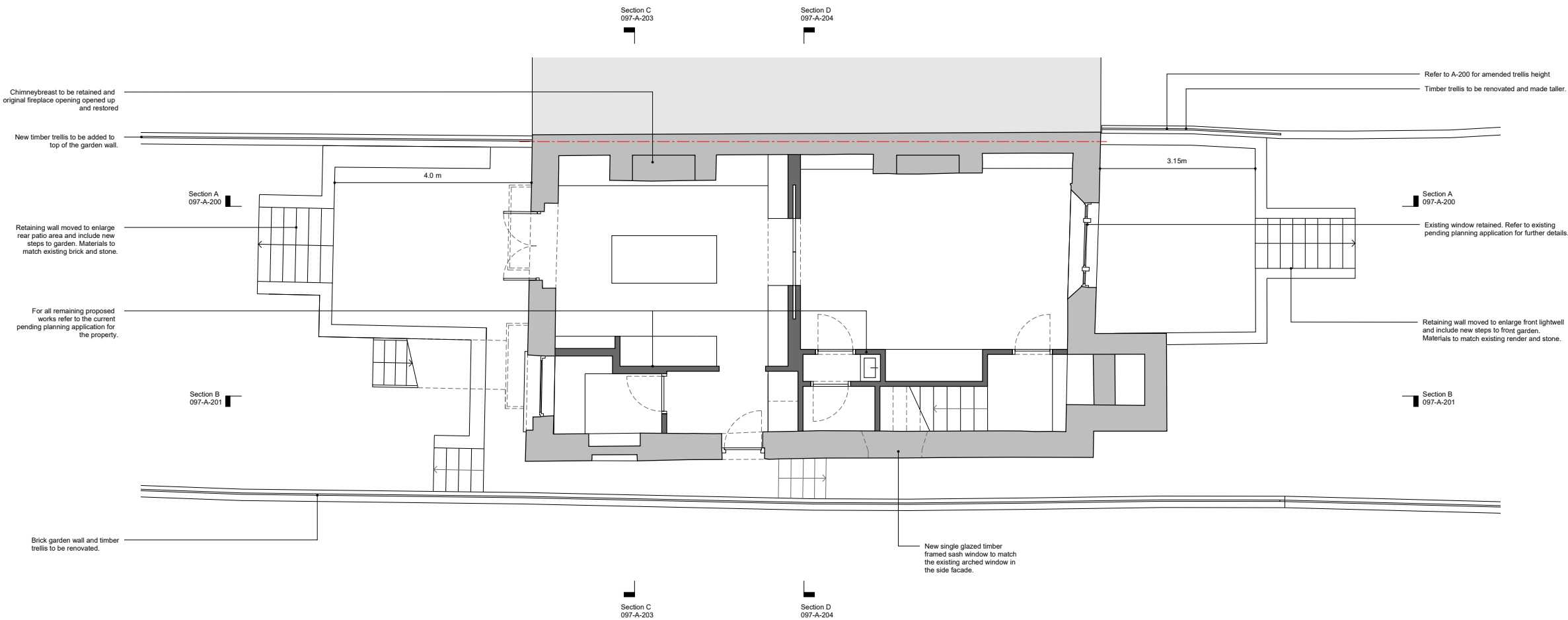
24.02.22 1:200 @ A3

RC MC

HESSELBRAND

Issued		
/	23.11.21	Issued for planning
A	24.02.22	Amended for planning
B	08.07.22	Amended for planning
C	18.07.22	Amended for planning

- Notes
- Existing
- Proposed



20 Eton Villas

Proposed

097-A-100

Lower Ground Floor Plan

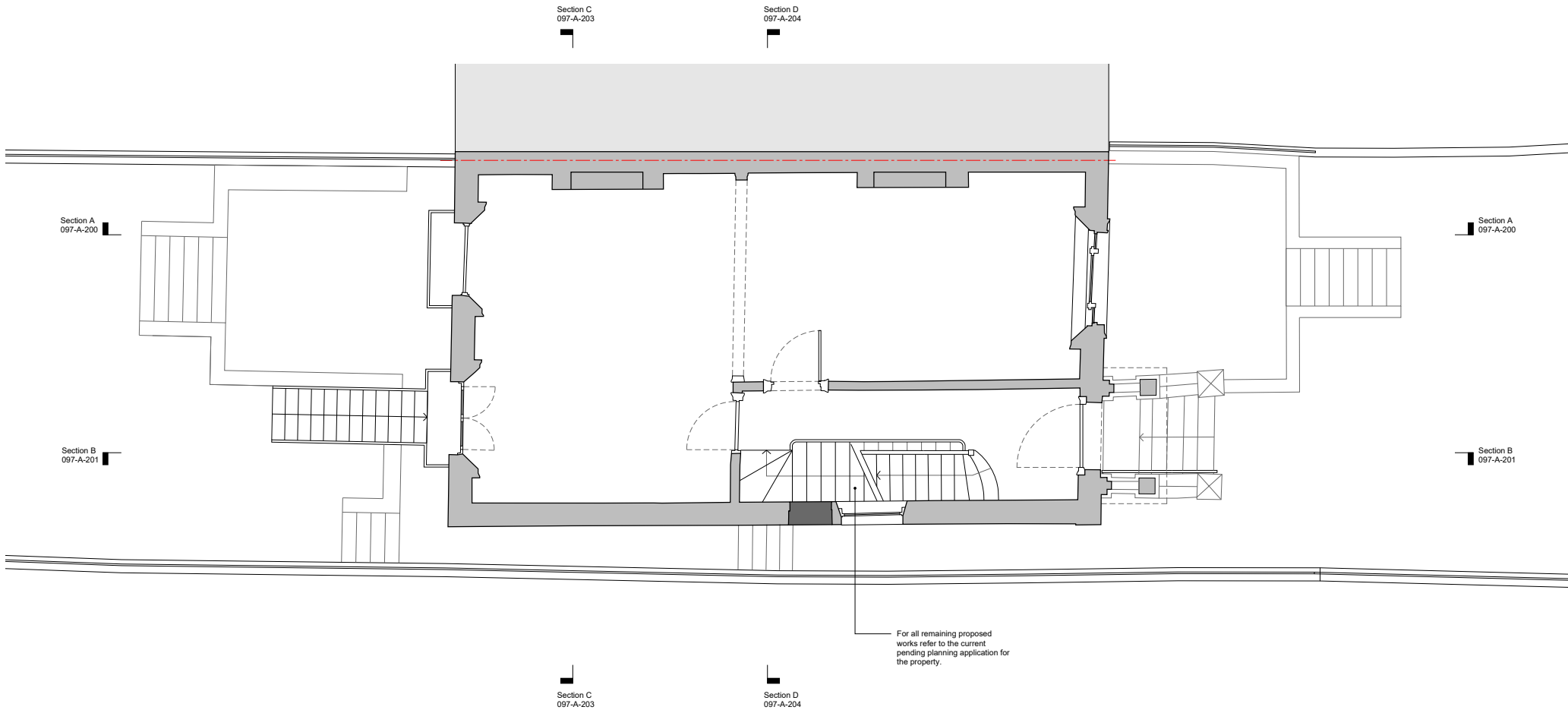
24.02.22	1:100 @ A3
JW	MC

HESSELBRAND

© Hesselbrand Ltd. All rights described in Chapter IV of the Copyright, Designs and Patents Act 1988 have been asserted. The drawing is to be read in conjunction with specifications and all relevant drawings. Contractor to check all dimensions on site. Do not scale from this drawing. Hesselbrand Ltd is to be advised of any variation between the drawings and the site conditions.

Issued		
/	23.11.21	Issued for planning
A	24.02.22	Amended for planning
B	08.07.22	Amended for planning
C	18.07.22	Amended for planning

- Notes
- Existing
- Proposed



20 Eton Villas

Proposed

097-A-101

Raised Ground Floor Plan

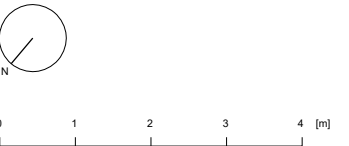
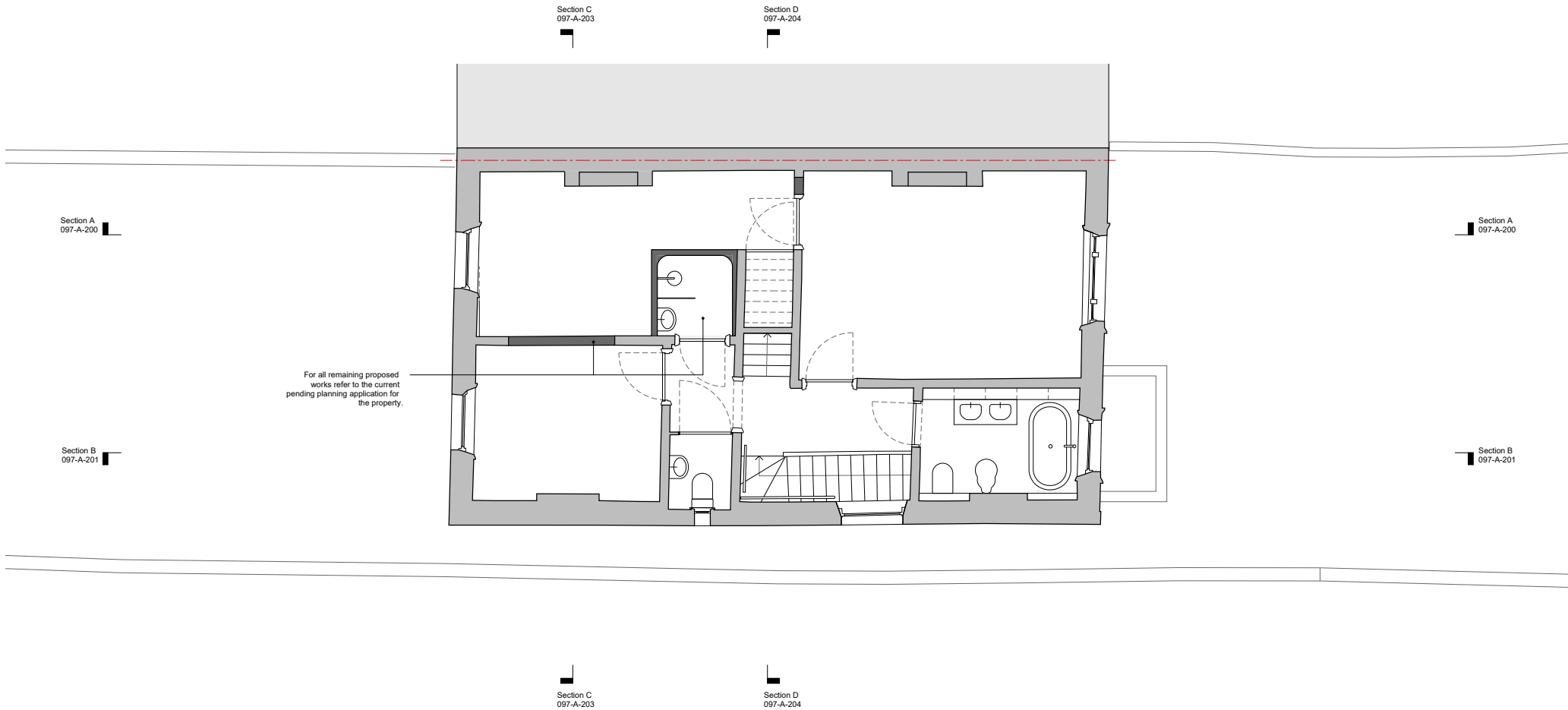
24.02.22	1:100 @ A3
JW	MC

HESSELBRAND

© Hesselbrand Ltd. All rights described in Chapter IV of the Copyright, Designs and Patents Act 1988 have been asserted. The drawing is to be read in conjunction with specifications and all relevant drawings. Contractor to check all dimensions on site. Do not scale from this drawing. Hesselbrand Ltd is to be advised of any variation between the drawings and the site conditions.

Issued		
/	23.11.21	Issued for planning
A	24.02.22	Amended for planning
B	08.07.22	Amended for planning
C	18.07.22	Amended for planning

- Notes
- Existing
- Proposed



20 Eton Villas

Proposed

097-A-102

First Floor Plan

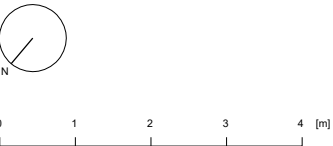
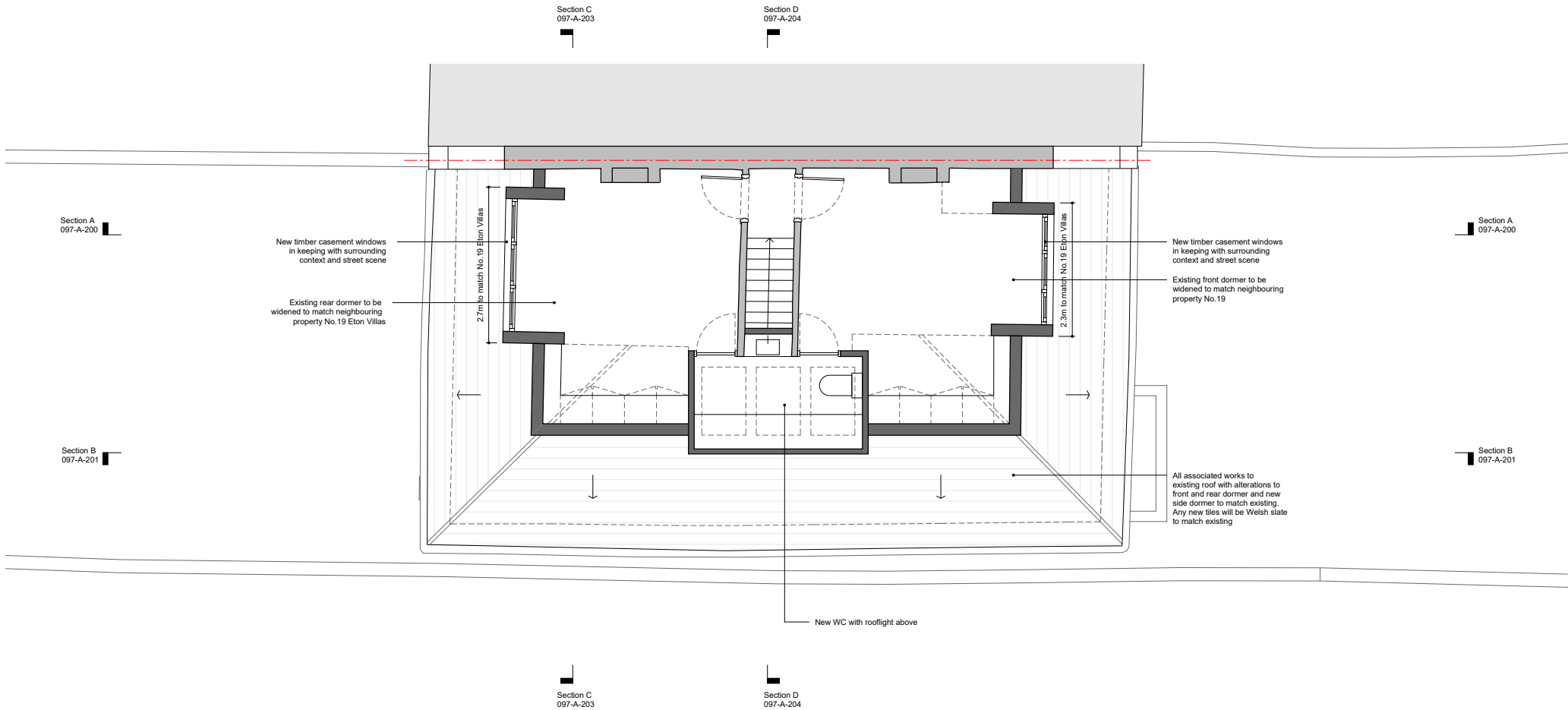
24.02.22	1:100 @ A3
JW	MC

HESSELBRAND

© Hesselbrand Ltd. All rights described in Chapter IV of the Copyright, Designs and Patents Act 1988 have been asserted. The drawing is to be read in conjunction with specifications and all relevant drawings. Contractor to check all dimensions on site. Do not scale from this drawing. Hesselbrand Ltd is to be advised of any variation between the drawings and the site conditions.

Issued		
/	23.11.21	Issued for planning
A	24.02.22	Amended for planning
B	08.07.22	Amended for planning
C	18.07.22	Amended for planning

- Notes
- Existing
- Proposed



20 Eton Villas

Proposed

097-A-103

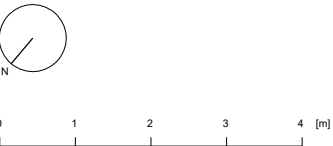
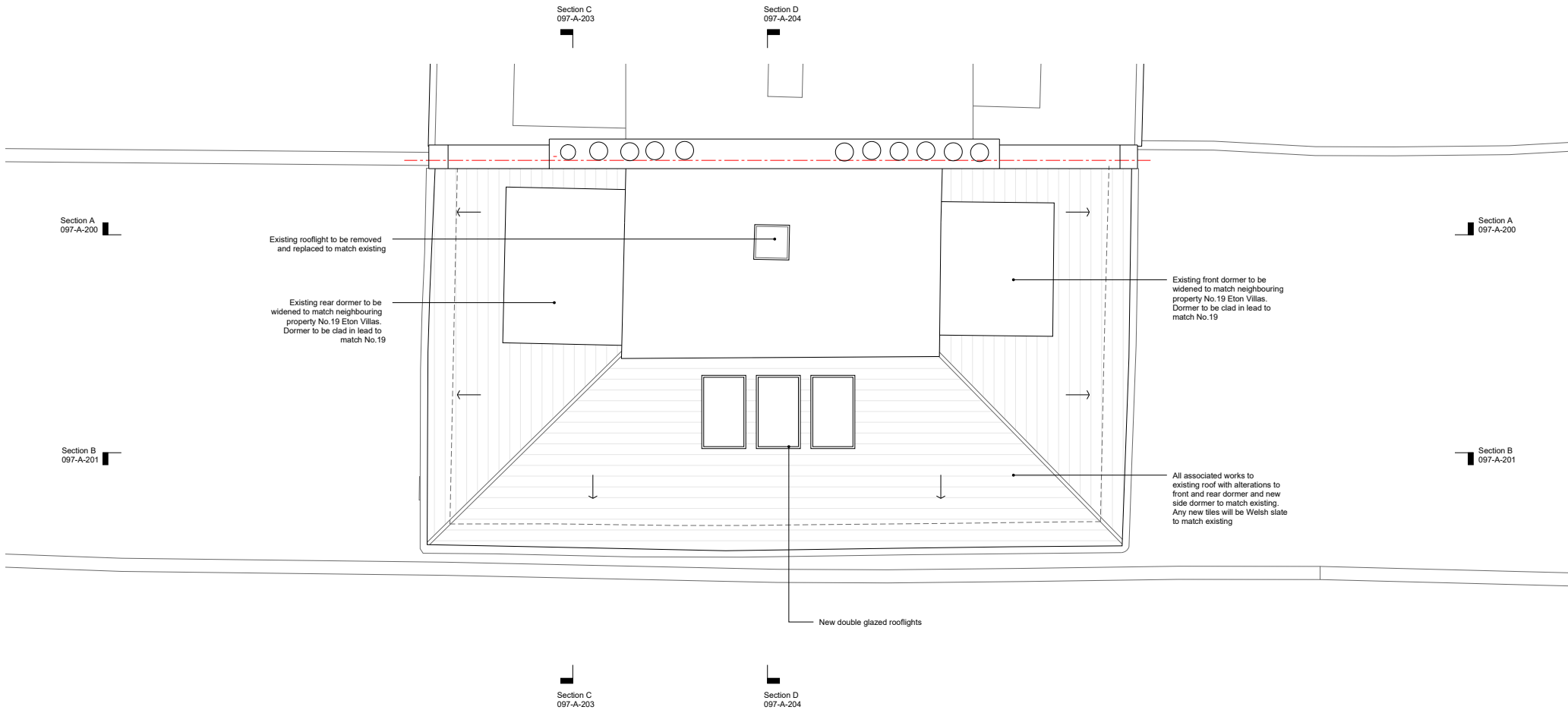
Second Floor Plan

24.02.22	1:100 @ A3
JW	MC

HESSELBRAND

Issued		
/	23.11.21	Issued for planning
A	24.02.22	Amended for planning
B	08.07.22	Amended for planning
C	18.07.22	Amended for planning

- Notes
- Existing
- Proposed



20 Eton Villas

Proposed

097-A-104

Roof Plan

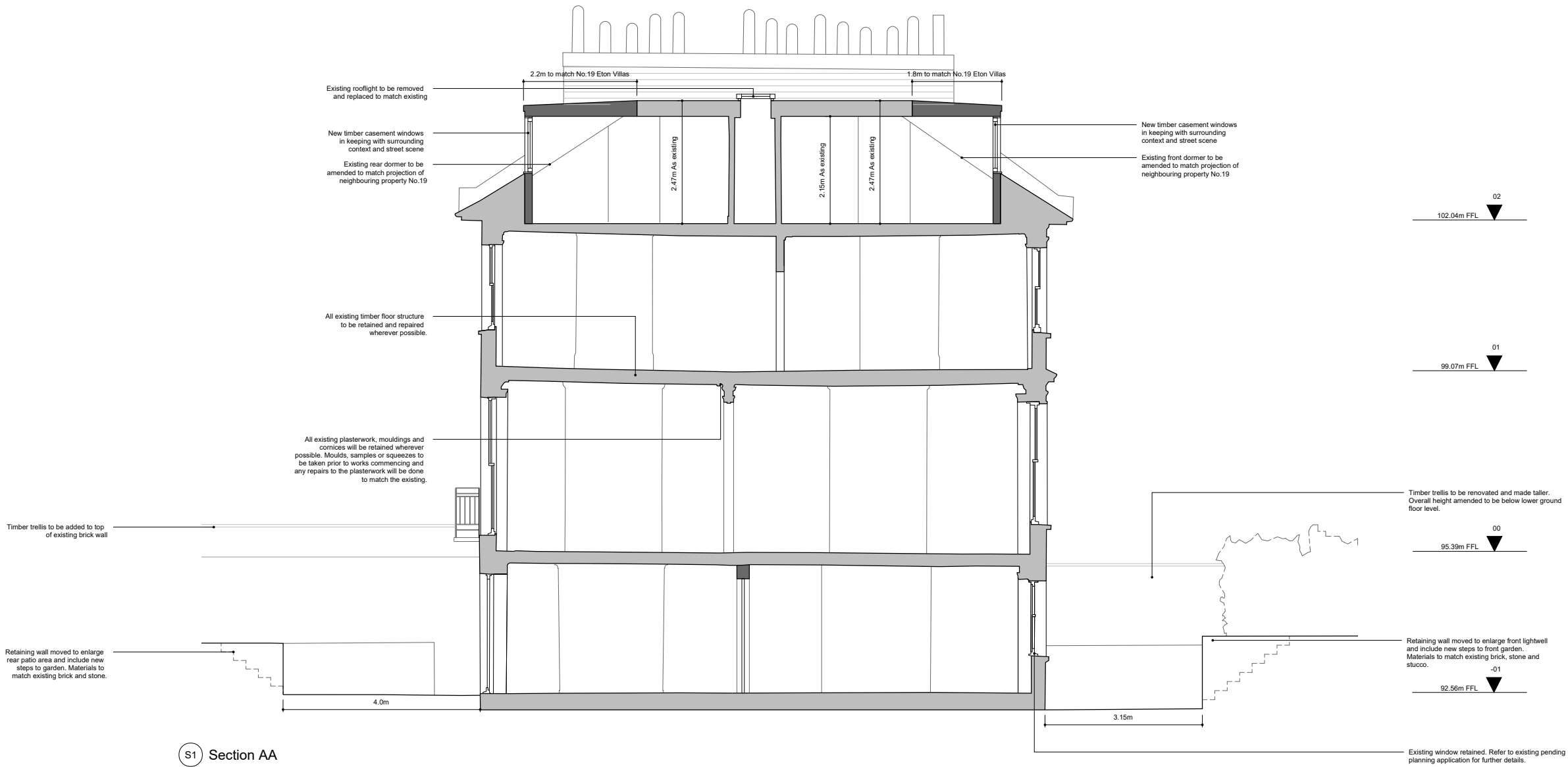
24.02.22	1:100 @ A3
JW	MC

HESSELBRAND

© Hesselbrand Ltd. All rights described in Chapter IV of the Copyright, Designs and Patents Act 1988 have been asserted. The drawing is to be read in conjunction with specifications and all relevant drawings. Contractor to check all dimensions on site. Do not scale from this drawing. Hesselbrand Ltd is to be advised of any variation between the drawings and the site conditions.

Issued		
/	23.11.21	Issued for planning
A	24.02.22	Amended for planning
B	08.07.22	Amended for planning
C	18.07.22	Amended for planning

- Notes
- Existing
- Proposed



0 1 2 3 4 [m]

20 Eton Villas

Proposed

097-A-200

Section AA

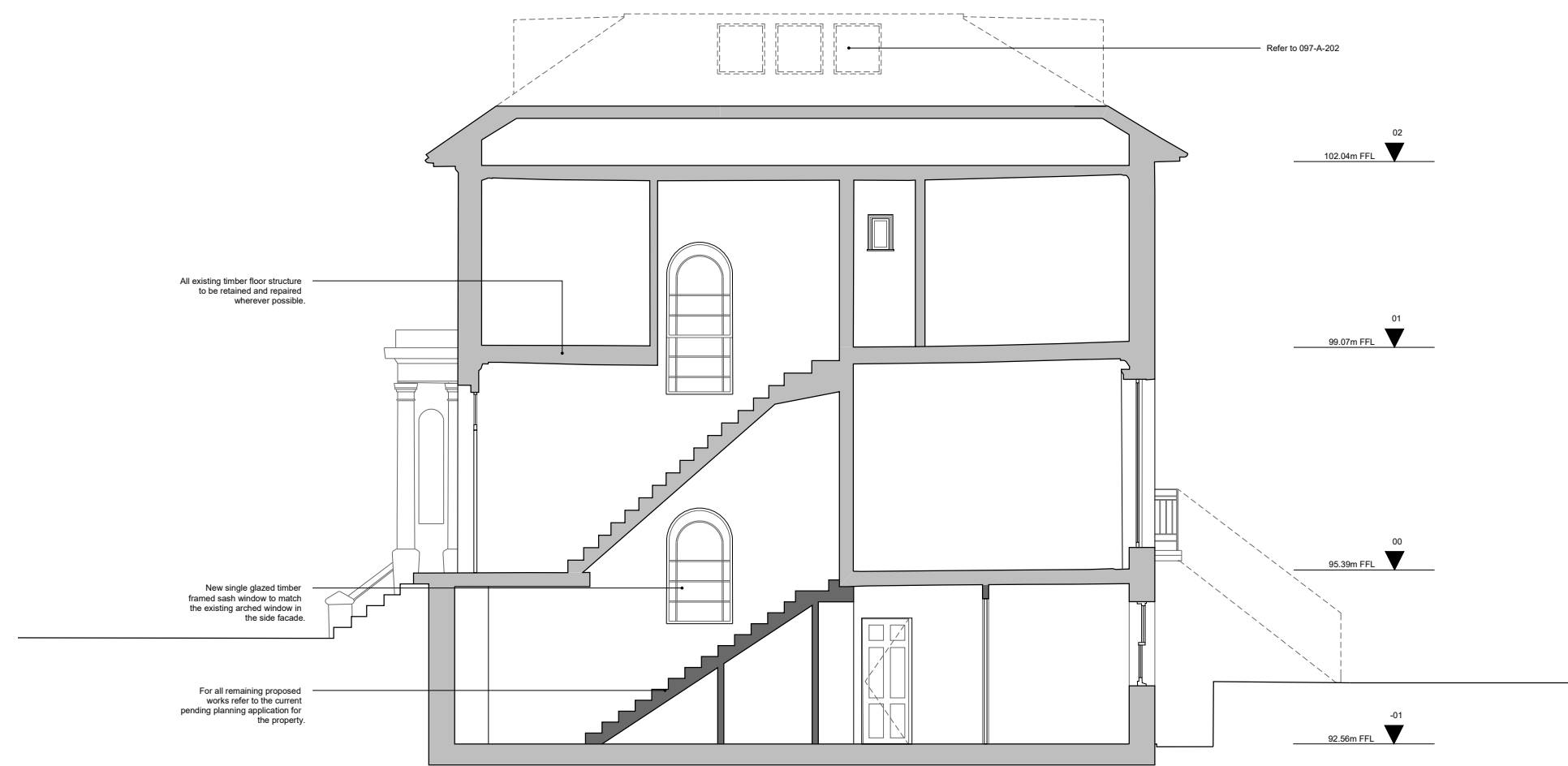
24.02.22 1:100 @ A3

JW MC

HESSELBRAND

Issued		
/	23.11.21	Issued for planning
A	24.02.22	Amended for planning
B	08.07.22	Amended for planning
C	18.07.22	Amended for planning

- Notes
- Existing
- Proposed



S2 Section BB



20 Eton Villas

Proposed

097-A-201

Section BB

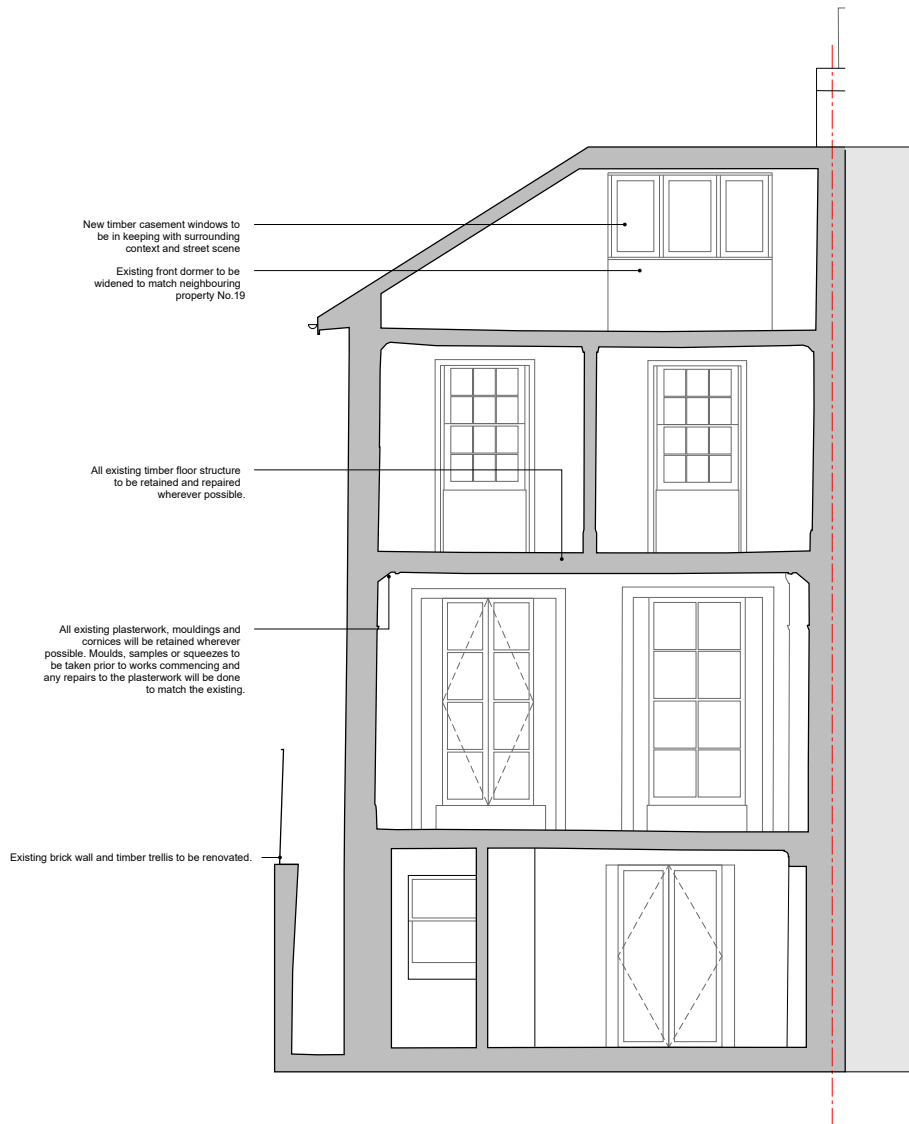
24.02.22 1:100 @ A3

JW MC

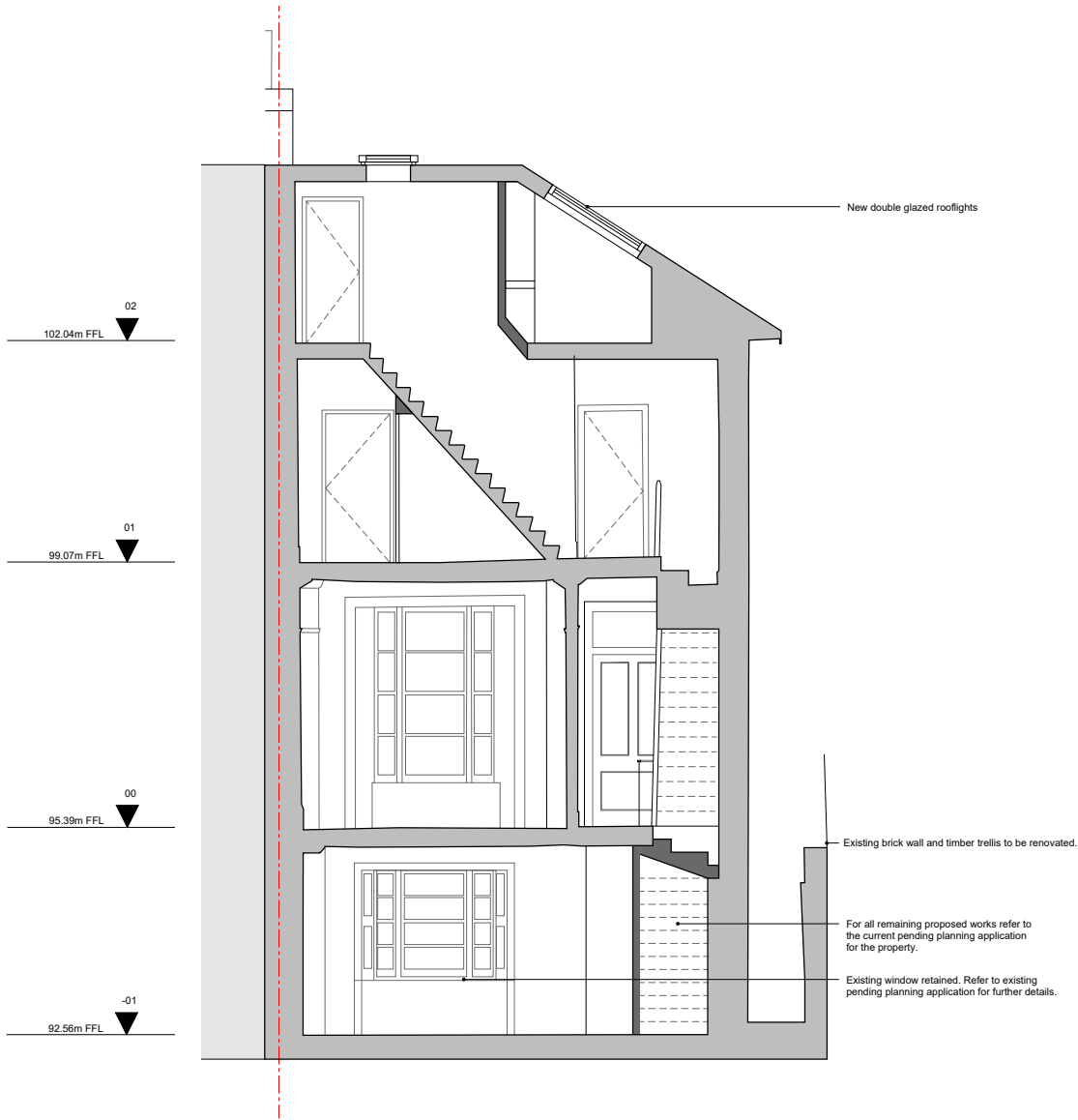
HESSELBRAND

Issued		
/	23.11.21	Issued for planning
A	24.02.22	Amended for planning
B	08.07.22	Amended for planning
C	18.07.22	Amended for planning

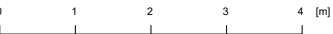
- Notes
- Existing
- Proposed



S3 Section CC



S4 Section DD



20 Eton Villas

Proposed

097-A-202

Section CC & DD

24.02.22	1:100 @ A3
JW	MC

HESSELBRAND



0 1 2 3 4 [m]

20 Eton Villas

Proposed

097-A-300

Front Elevation

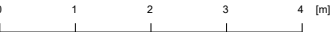
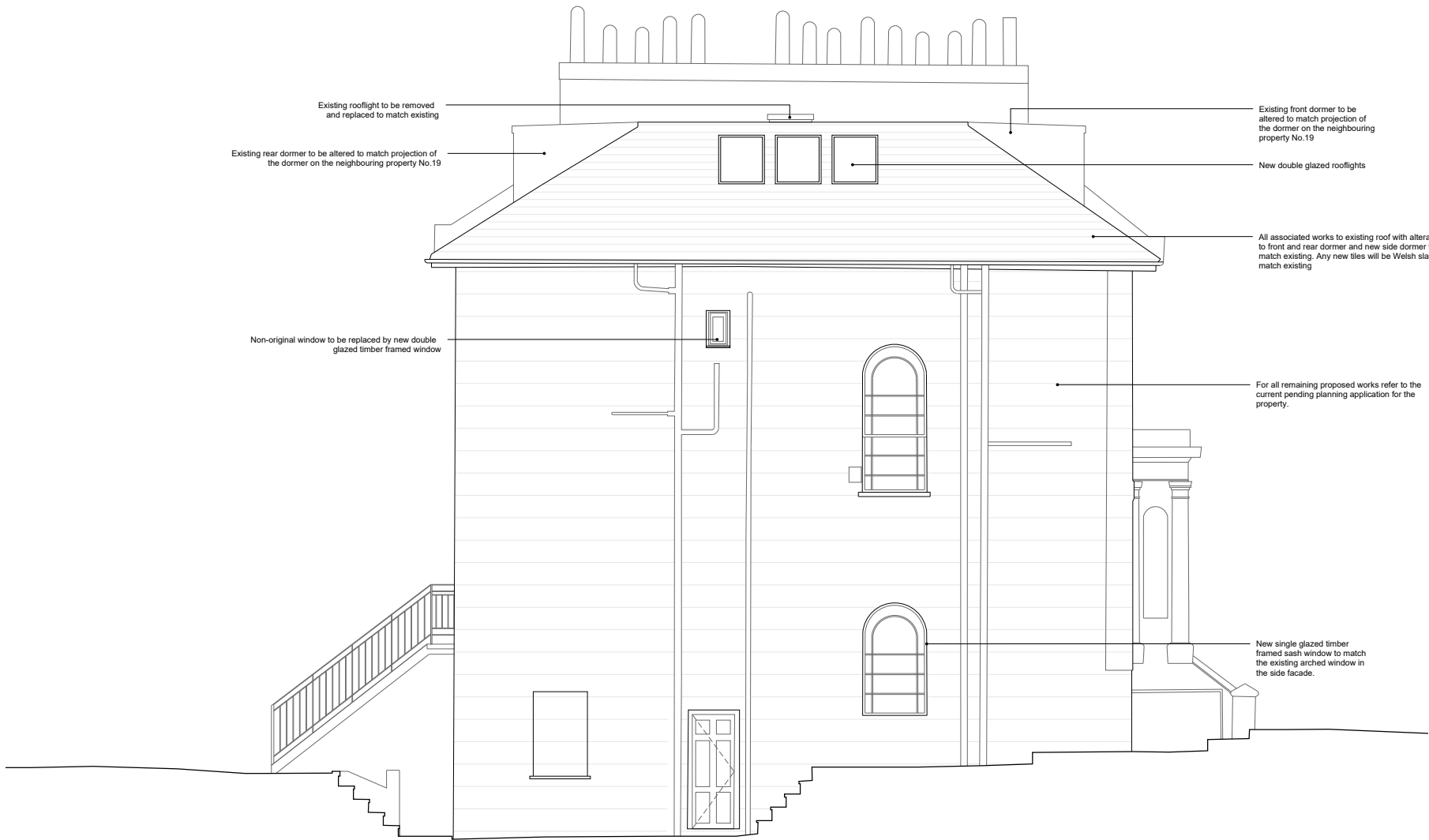
24.02.22 1:100 @ A3

JW MC

HESSELBRAND

Issued		
/	23.11.21	Issued for planning
A	24.02.22	Amended for planning
B	08.07.22	Amended for planning
C	18.07.22	Amended for planning

- Notes
- Existing
- Proposed



20 Eton Villas

Proposed

097-A-301

Side Elevation

24.02.22	1:100 @ A3
JW	MC

HESSELBRAND

Issued		
/	23.11.21	Issued for planning
A	24.02.22	Amended for planning
B	08.07.22	Amended for planning
C	18.07.22	Amended for planning

- Notes
- Existing
- Proposed



0 1 2 3 4 [m]

20 Eton Villas

Proposed

097-A-302

Rear Elevation

24.02.22	1:100 @ A3
JW	MC

HESSELBRAND

© Hesselbrand Ltd. All rights described in Chapter IV of the Copyright, Designs and Patents Act 1988 have been asserted. The drawing is to be read in conjunction with specifications and all relevant drawings. Contractor to check all dimensions on site. Do not scale from this drawing. Hesselbrand Ltd is to be advised of any variation between the drawings and the site conditions.

Notes

Existing

Proposed



0 1 2 3 4 [m]

20 Eton Villas

Proposed

097-A-305

Street Elevation

24.02.22 1:100 @ A3

MS MC

HESSELBRAND