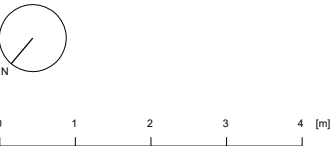
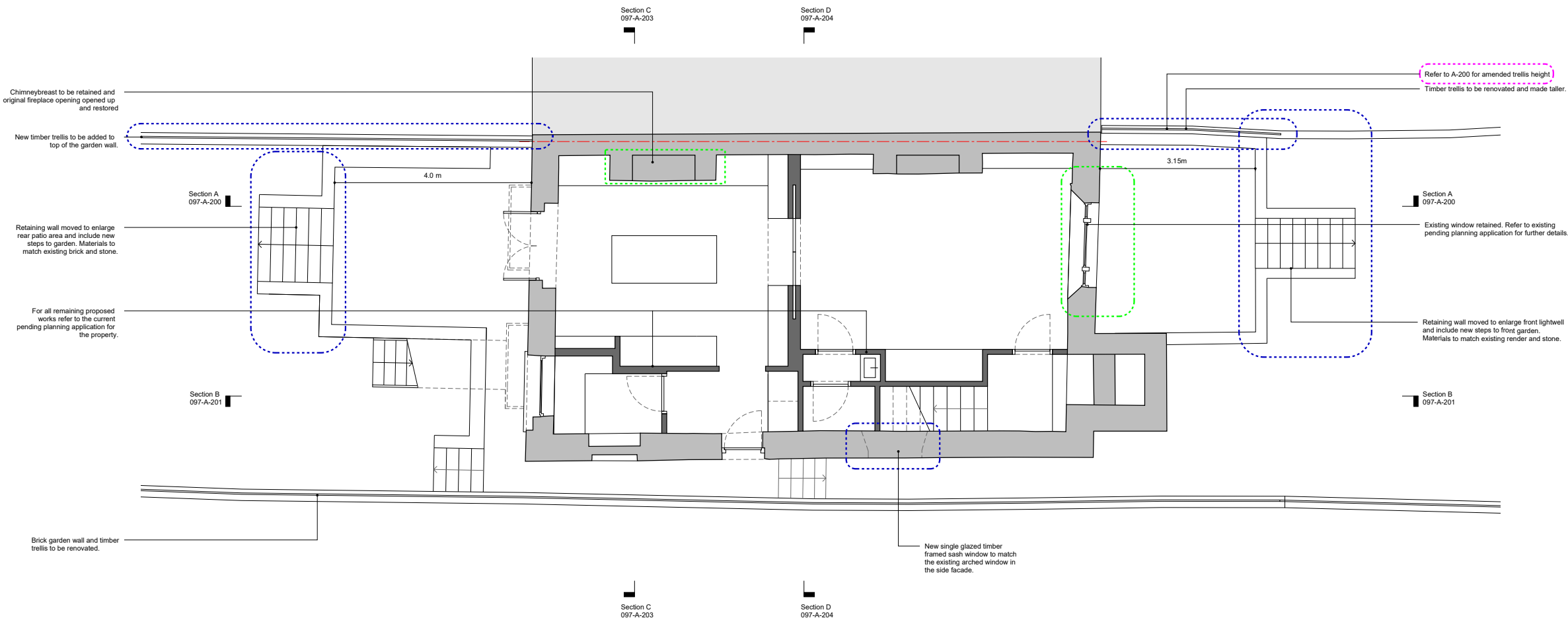


Issued		
/	23.11.21	Issued for planning
A	24.02.22	Amended for planning
B	08.07.22	Amended for planning
C	18.07.22	Amended for planning

- Notes
- Existing
 - Proposed
 - Amended 02/2022
 - Amended 07/2022
 - Amended 07/2022



20 Eton Villas

Proposed

097-A-100

Lower Ground Floor Plan

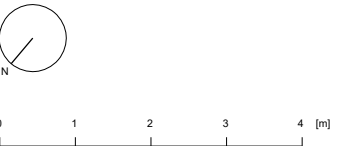
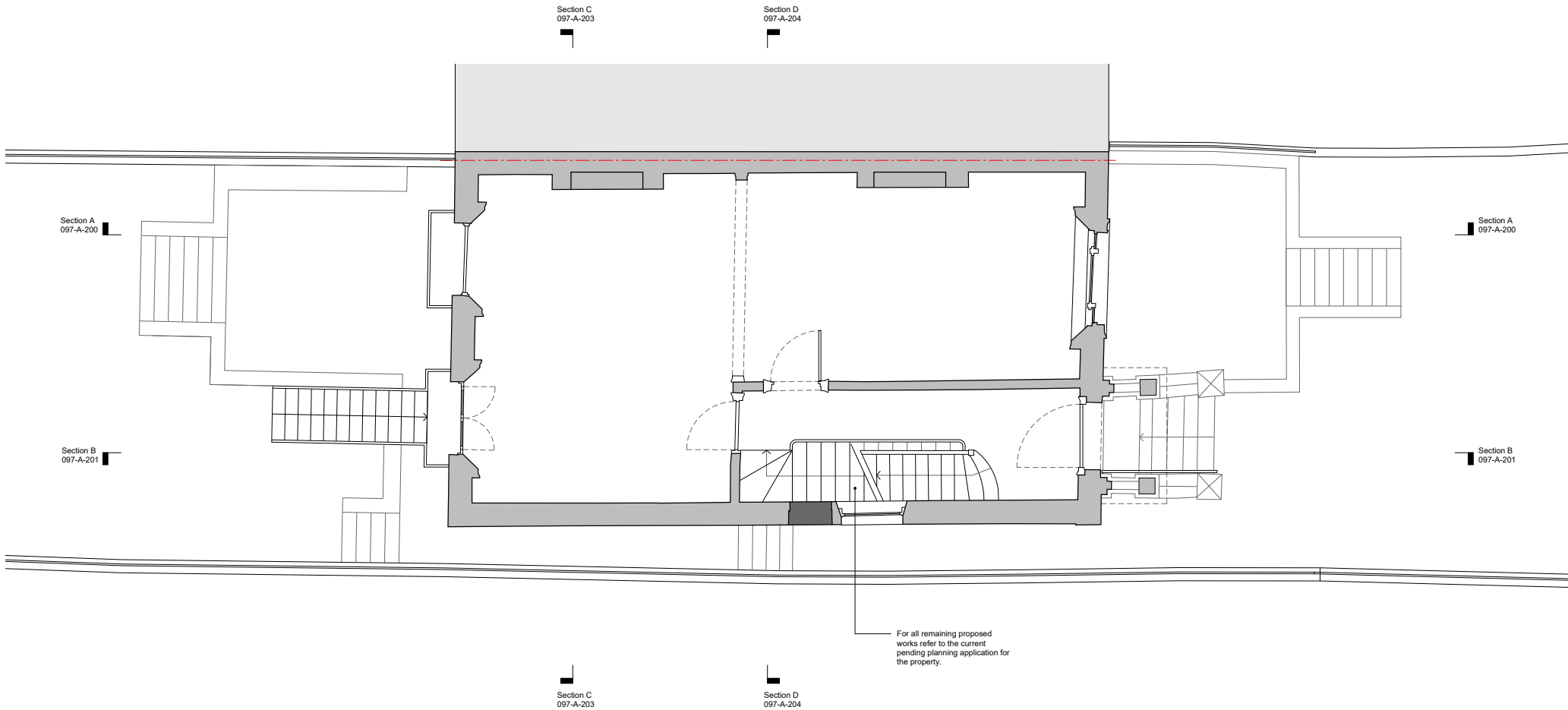
24.02.22	1:100 @ A3
JW	MC

HESSELBRAND

© Hesselbrand Ltd. All rights described in Chapter IV of the Copyright, Designs and Patents Act 1988 have been asserted. The drawing is to be read in conjunction with specifications and all relevant drawings. Contractor to check all dimensions on site. Do not scale from this drawing. Hesselbrand Ltd is to be advised of any variation between the drawings and the site conditions.

Issued		
/	23.11.21	Issued for planning
A	24.02.22	Amended for planning
B	08.07.22	Amended for planning
C	18.07.22	Amended for planning

- Notes
- Existing
 - Proposed
 - Amended 02/2022
 - Amended 07/2022
 - Amended 07/2022



20 Eton Villas

Proposed

097-A-101

Raised Ground Floor Plan

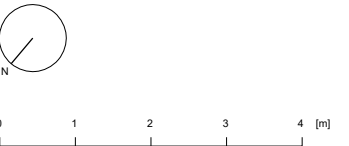
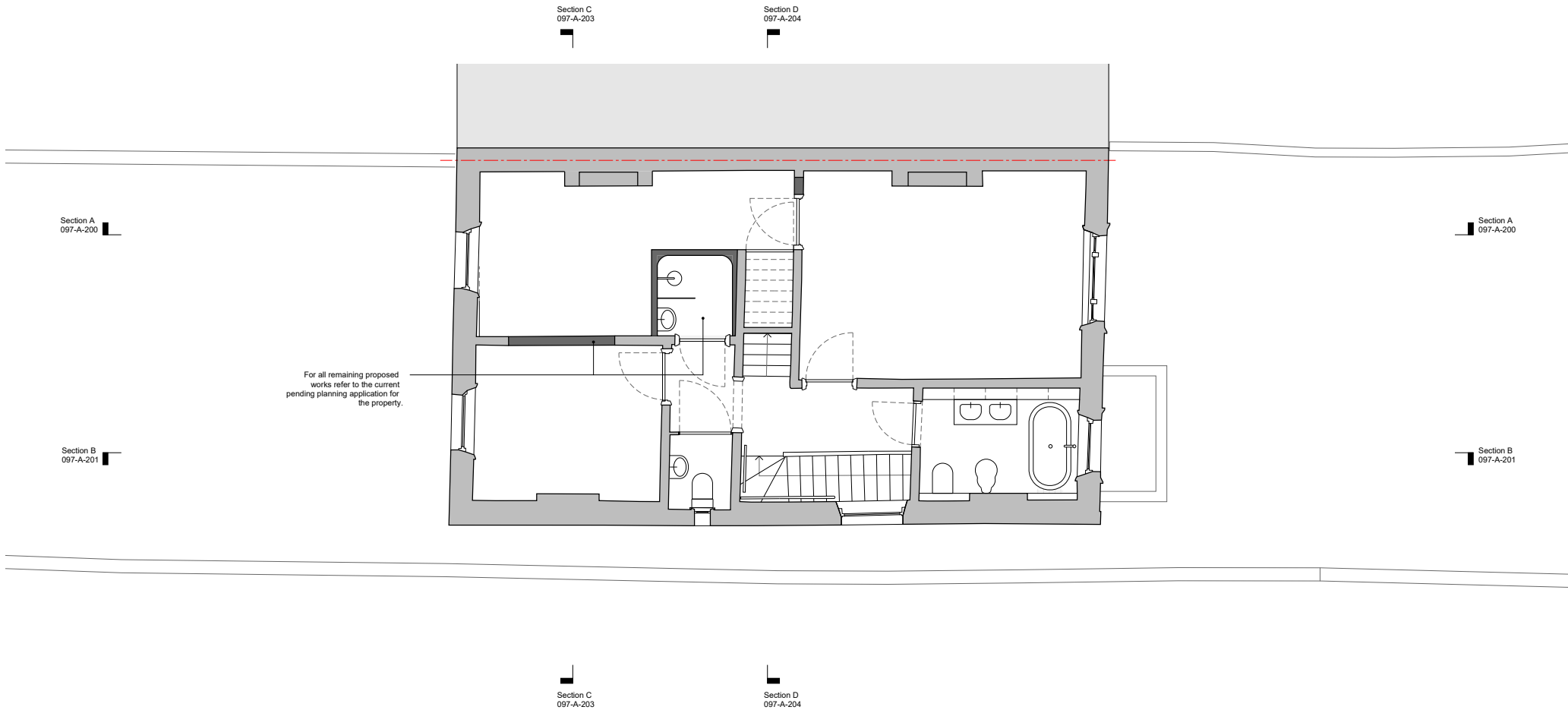
24.02.22	1:100 @ A3
JW	MC

HESSELBRAND

© Hesselbrand Ltd. All rights described in Chapter IV of the Copyright, Designs and Patents Act 1988 have been asserted. The drawing is to be read in conjunction with specifications and all relevant drawings. Contractor to check all dimensions on site. Do not scale from this drawing. Hesselbrand Ltd is to be advised of any variation between the drawings and the site conditions.

Issued		
/	23.11.21	Issued for planning
A	24.02.22	Amended for planning
B	08.07.22	Amended for planning
C	18.07.22	Amended for planning

- Notes
- Existing
 - Proposed
 - Amended 02/2022
 - Amended 07/2022
 - Amended 07/2022



20 Eton Villas

Proposed

097-A-102

First Floor Plan

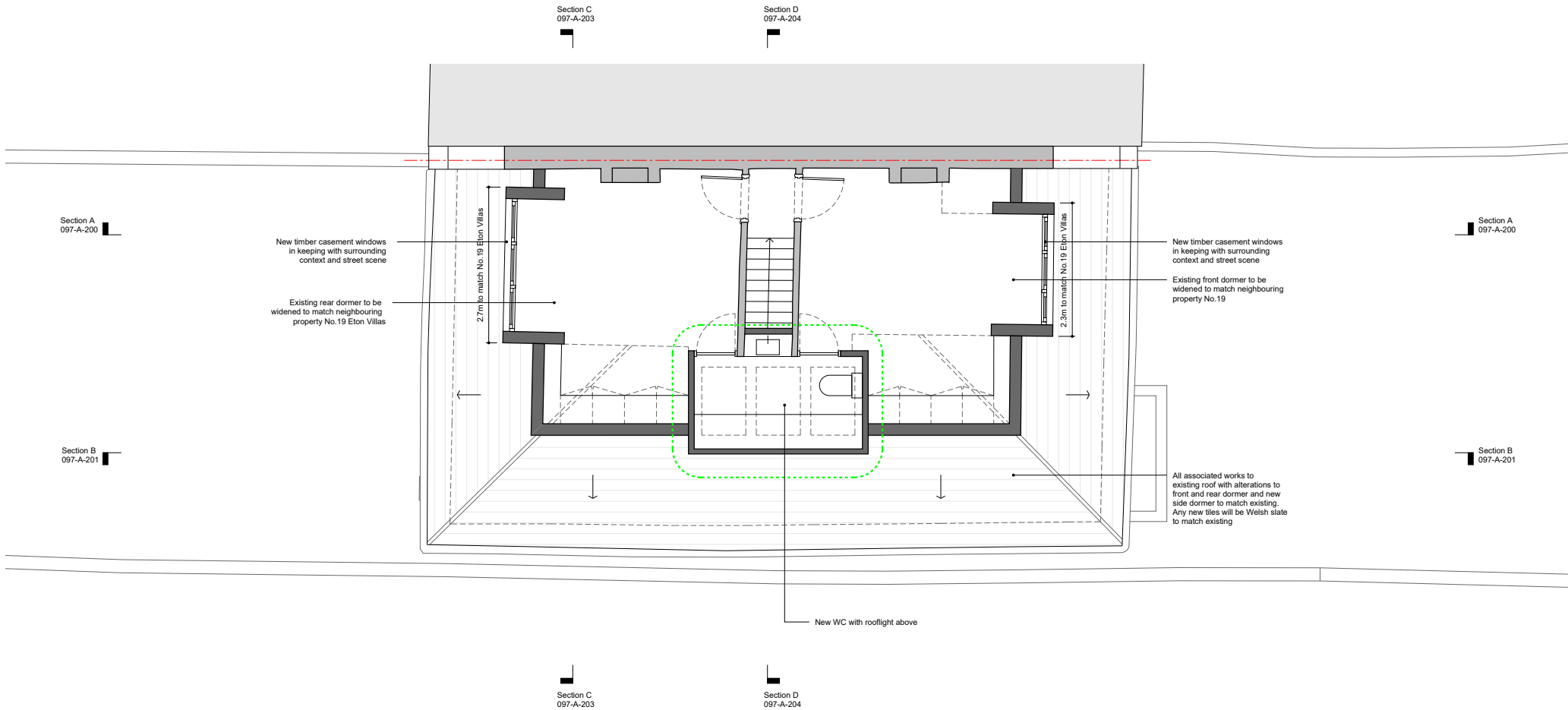
24.02.22	1:100 @ A3
JW	MC

HESSELBRAND

© Hesselbrand Ltd. All rights described in Chapter IV of the Copyright, Designs and Patents Act 1988 have been asserted. The drawing is to be read in conjunction with specifications and all relevant drawings. Contractor to check all dimensions on site. Do not scale from this drawing. Hesselbrand Ltd is to be advised of any variation between the drawings and the site conditions.

Issued		
/	23.11.21	Issued for planning
A	24.02.22	Amended for planning
B	08.07.22	Amended for planning
C	18.07.22	Amended for planning

- Notes
- Existing
 - Proposed
 - Amended 02/2022
 - Amended 07/2022
 - Amended 07/2022



20 Eton Villas

Proposed

097-A-103

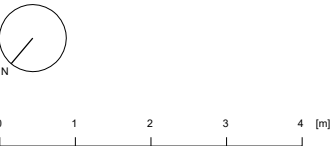
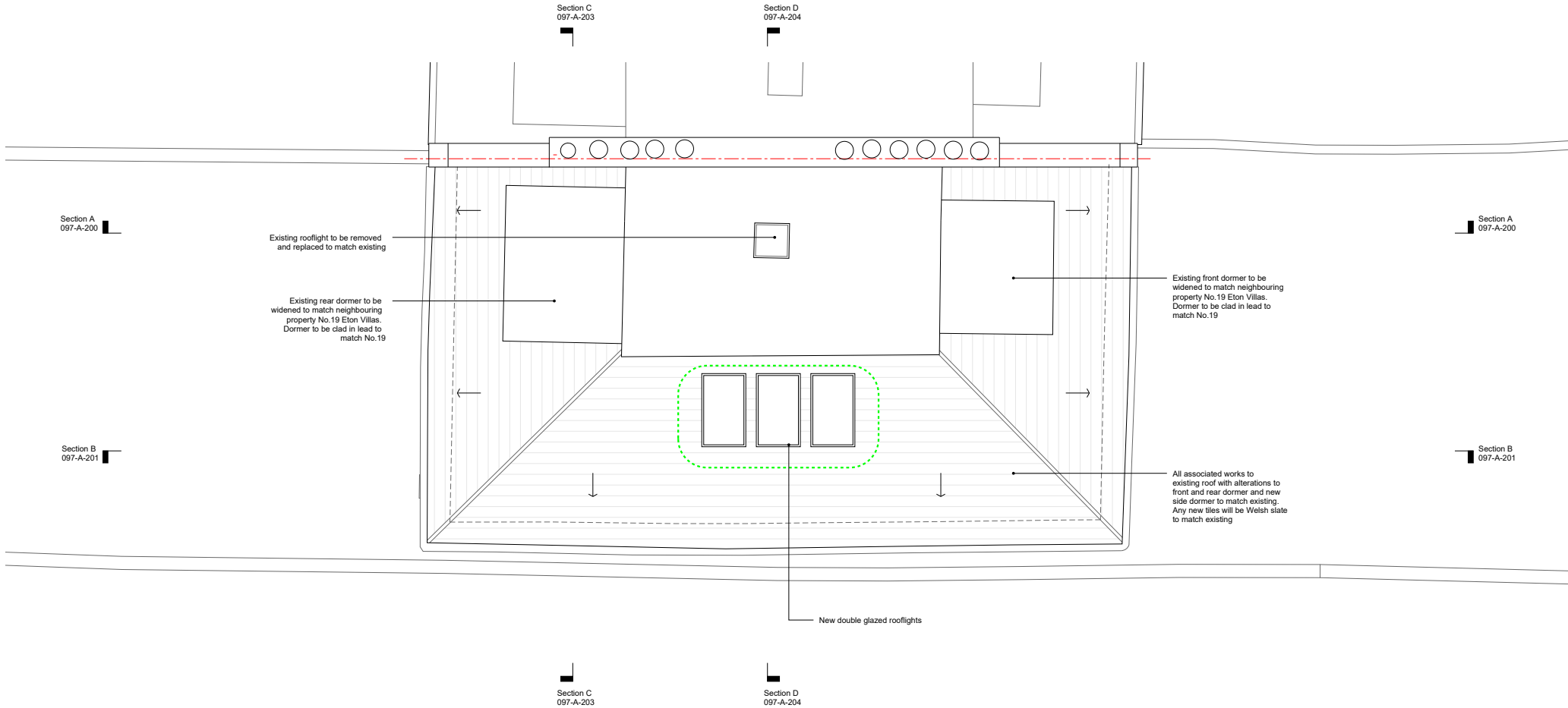
Second Floor Plan

24.02.22	1:100 @ A3
JW	MC

HESSELBRAND

Issued		
/	23.11.21	Issued for planning
A	24.02.22	Amended for planning
B	08.07.22	Amended for planning
C	18.07.22	Amended for planning

- Notes
- Existing
 - Proposed
 - Amended 02/2022
 - Amended 07/2022
 - Amended 07/2022



20 Eton Villas

Proposed

097-A-104

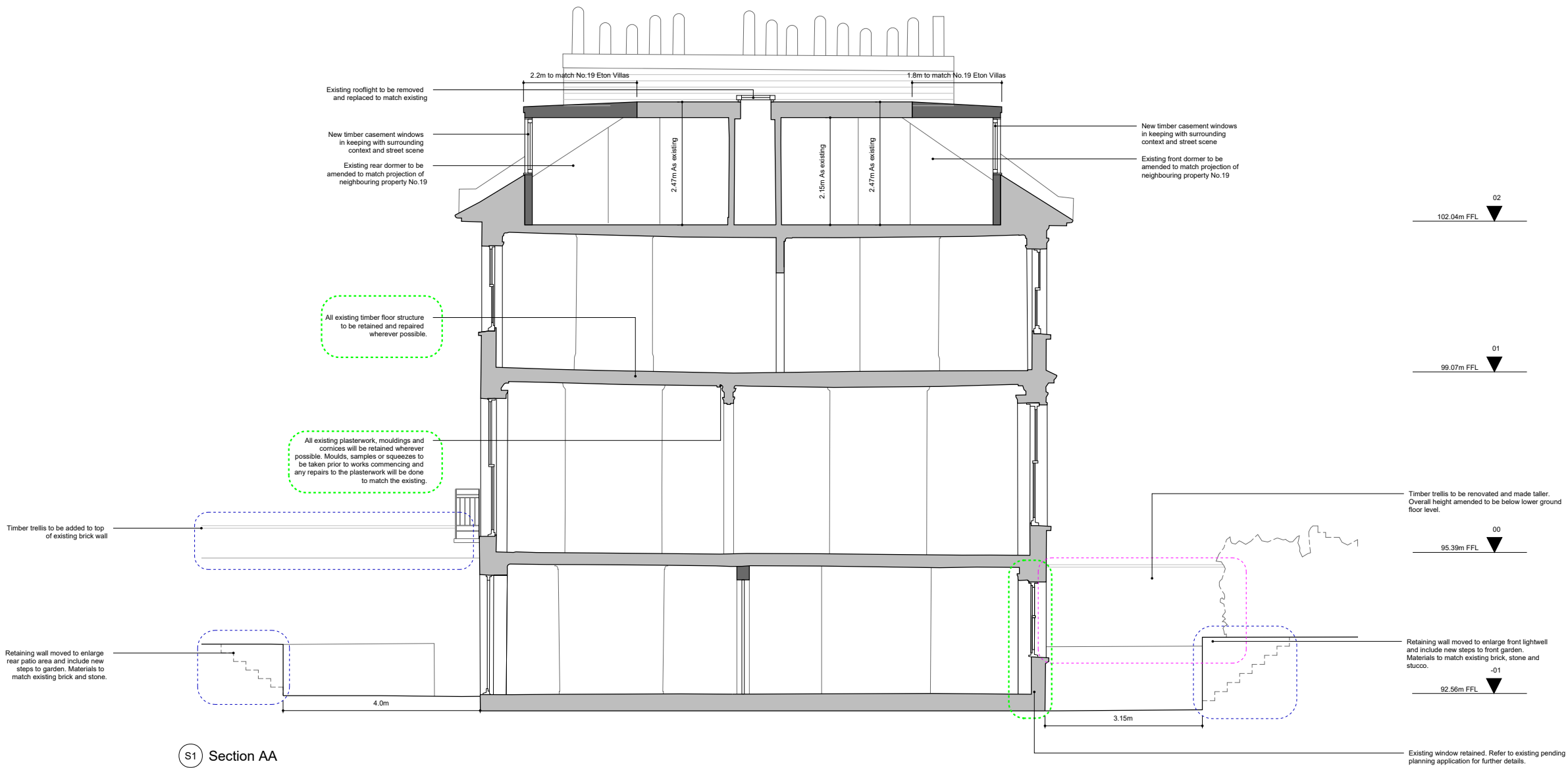
Roof Plan

24.02.22	1:100 @ A3
JW	MC

HESSELBRAND

Issued		
/ 23.11.21	Issued for planning	
A 24.02.22	Amended for planning	
B 08.07.22	Amended for planning	
C 18.07.22	Amended for planning	

- Notes
- Existing
 - Proposed
 - Amended 02/2022
 - Amended 07/2022
 - Amended 07/2022



0 1 2 3 4 [m]

20 Eton Villas

Proposed

097-A-200

Section AA

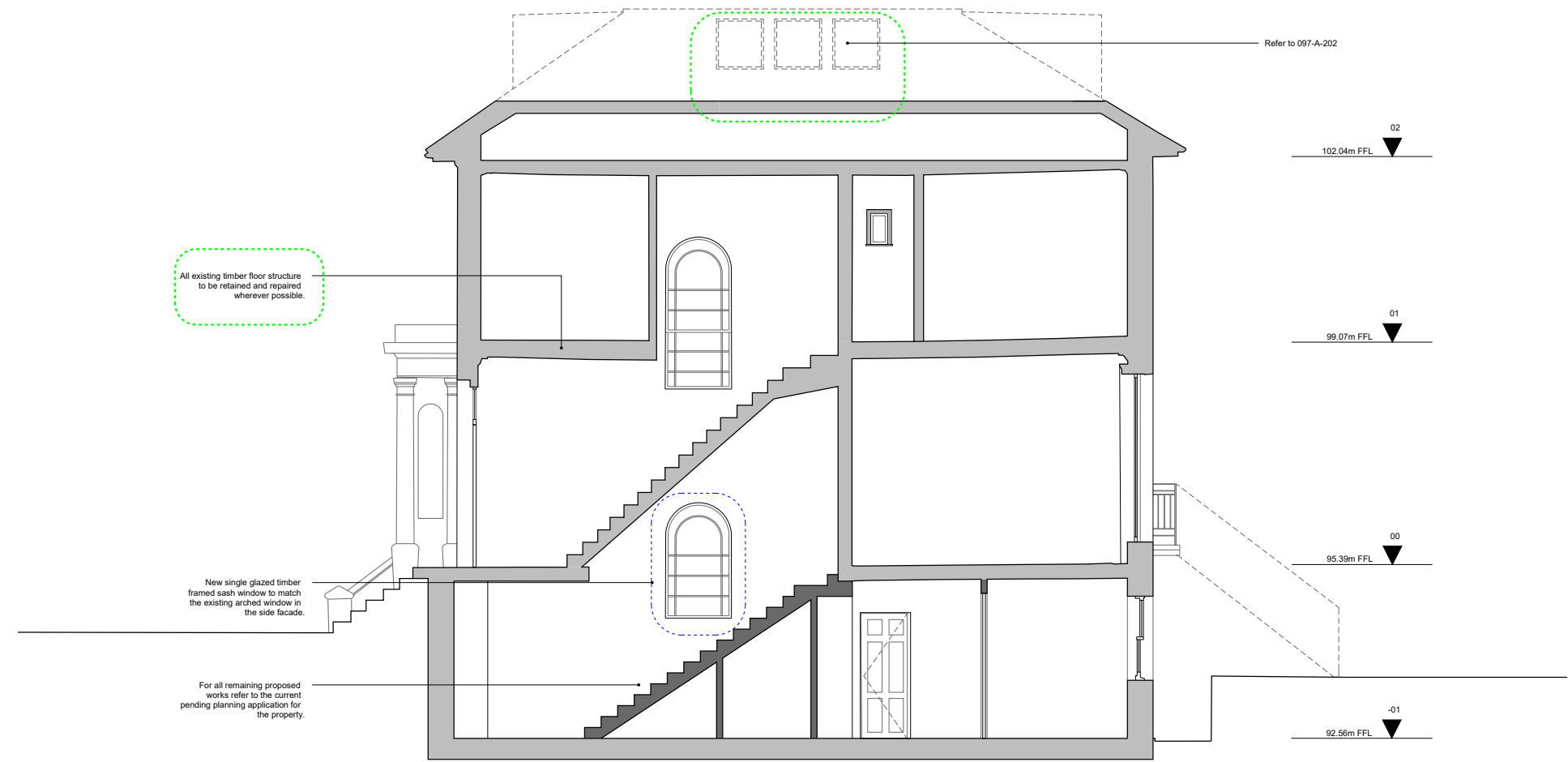
24.02.22 1:100 @ A3

JW MC

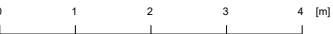
HESSELBRAND

Issued		
/	23.11.21	Issued for planning
A	24.02.22	Amended for planning
B	08.07.22	Amended for planning
C	18.07.22	Amended for planning

Notes	
<div></div>	Existing
<div></div>	Proposed
<div></div>	Amended 02/2022
<div></div>	Amended 07/2022
<div></div>	Amended 07/2022



S2 Section BB



20 Eton Villas

Proposed

097-A-201

Section BB

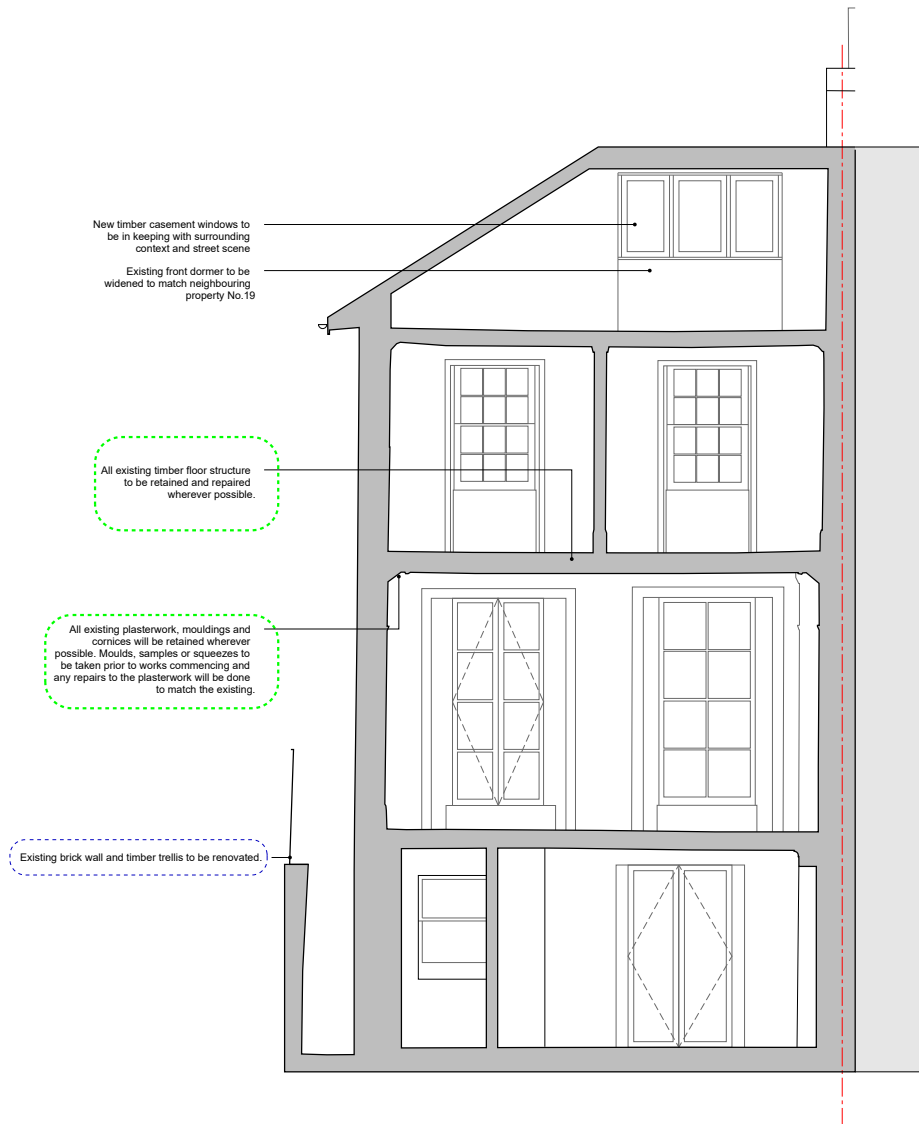
24.02.22 1:100 @ A3

JW MC

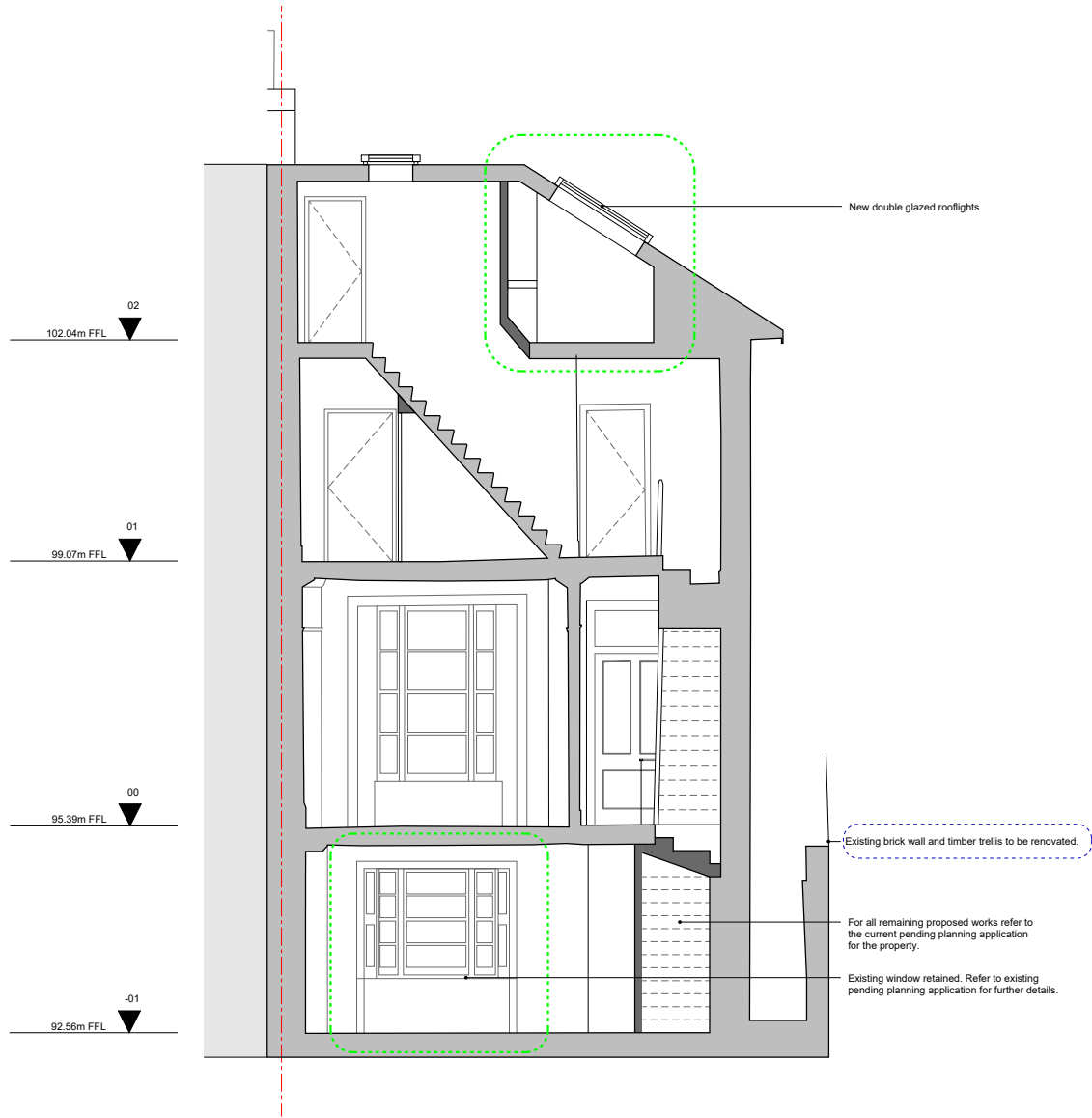
HESSELBRAND

Issued		
/	23.11.21	Issued for planning
A	24.02.22	Amended for planning
B	08.07.22	Amended for planning
C	18.07.22	Amended for planning

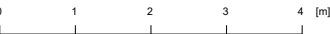
- Notes
- Existing
 - Proposed
 - Amended 02/2022
 - Amended 07/2022
 - Amended 07/2022



S3 Section CC



S4 Section DD



20 Eton Villas

Proposed

097-A-202

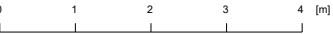
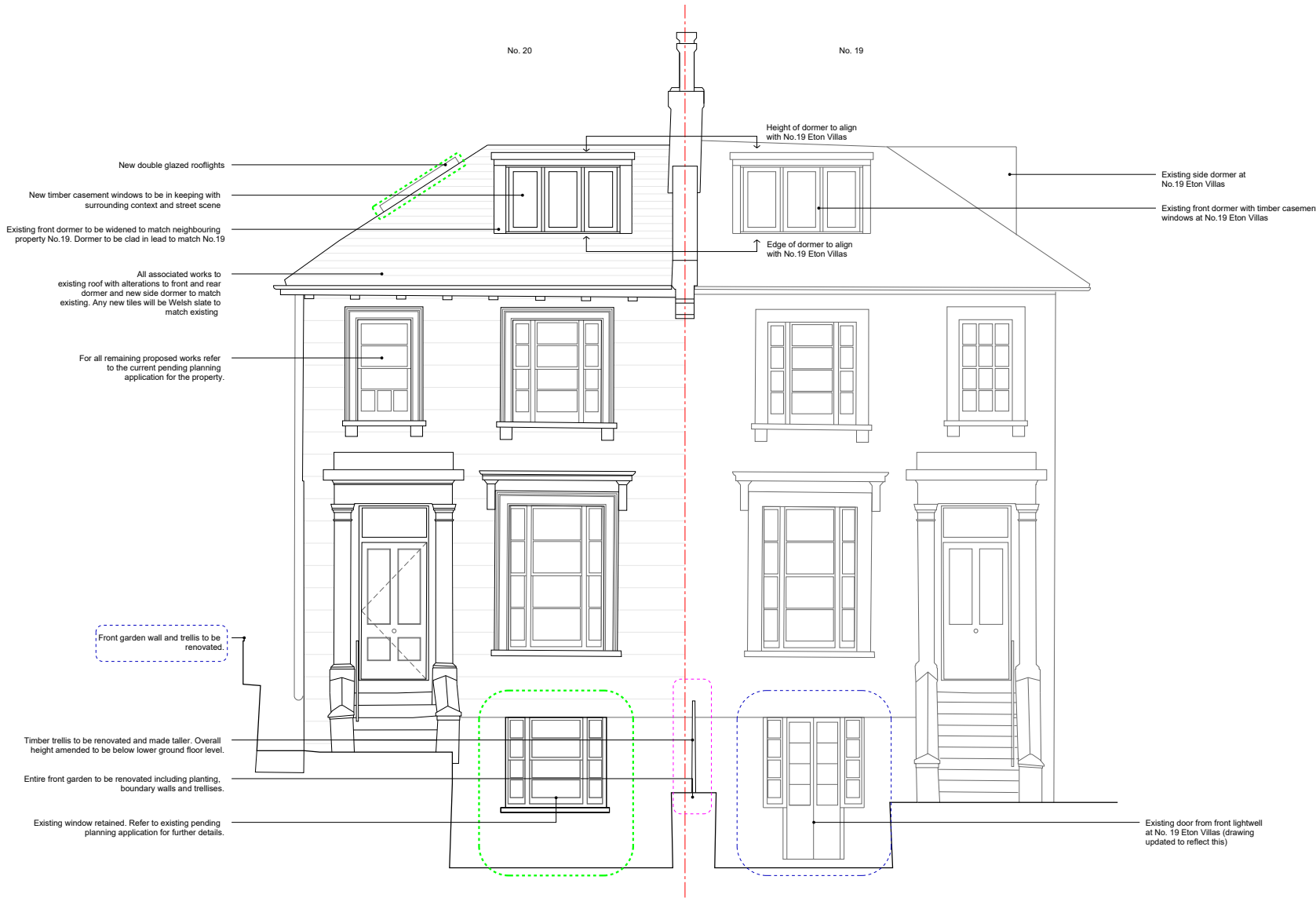
Section CC & DD

24.02.22	1:100 @ A3
JW	MC

HESSELBRAND

Issued		
/	23.11.21	Issued for planning
A	24.02.22	Amended for planning
B	08.07.22	Amended for planning
C	18.07.22	Amended for planning

- Notes
- Existing
 - Proposed
 - Amended 02/2022
 - Amended 07/2022
 - Amended 07/2022



20 Eton Villas

Proposed

097-A-300

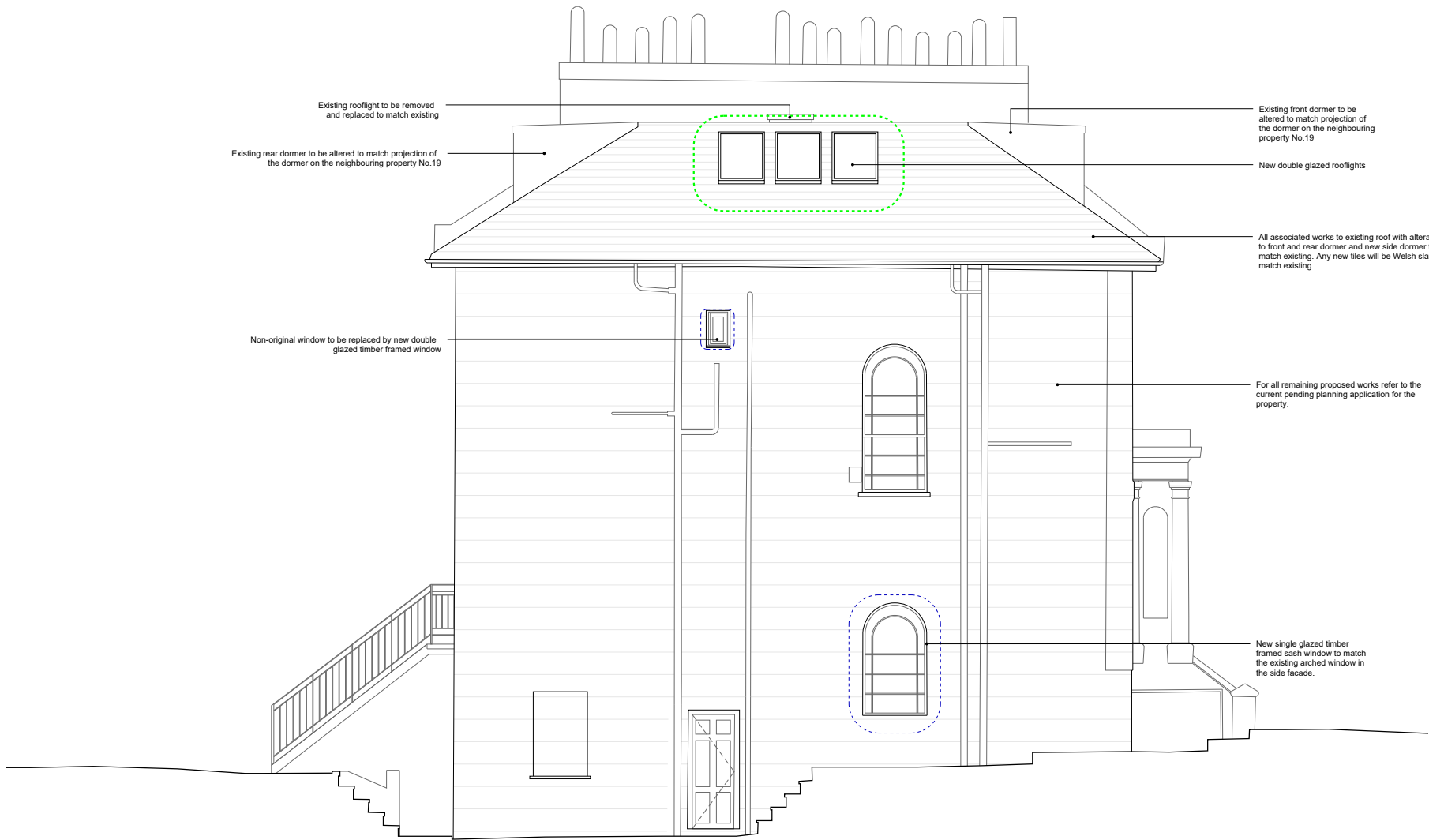
Front Elevation

24.02.22	1:100 @ A3
JW	MC

HESSELBRAND

Issued		
/	23.11.21	Issued for planning
A	24.02.22	Amended for planning
B	08.07.22	Amended for planning
C	18.07.22	Amended for planning

- Notes
- Existing
 - Proposed
 - Amended 02/2022
 - Amended 07/2022
 - Amended 07/2022



0 1 2 3 4 [m]

20 Eton Villas

Proposed

097-A-301

Side Elevation

24.02.22	1:100 @ A3
JW	MC

HESSELBRAND

Issued		
/	23.11.21	Issued for planning
A	24.02.22	Amended for planning
B	08.07.22	Amended for planning
C	18.07.22	Amended for planning

- Notes
- Existing
 - Proposed
 - Amended 02/2022
 - Amended 07/2022
 - Amended 07/2022



0 1 2 3 4 [m]

20 Eton Villas

Proposed

097-A-302

Rear Elevation

24.02.22 1:100 @ A3

JW MC

HESSELBRAND

- Notes
- Existing

Proposed

Amended 02/2022

Amended 07/2022

Amended 07/2022



0 1 2 3 4 [m]

20 Eton Villas

Proposed

097-A-305

Street Elevation

24.02.22 1:100 @ A3

MS MC

HESSELBRAND