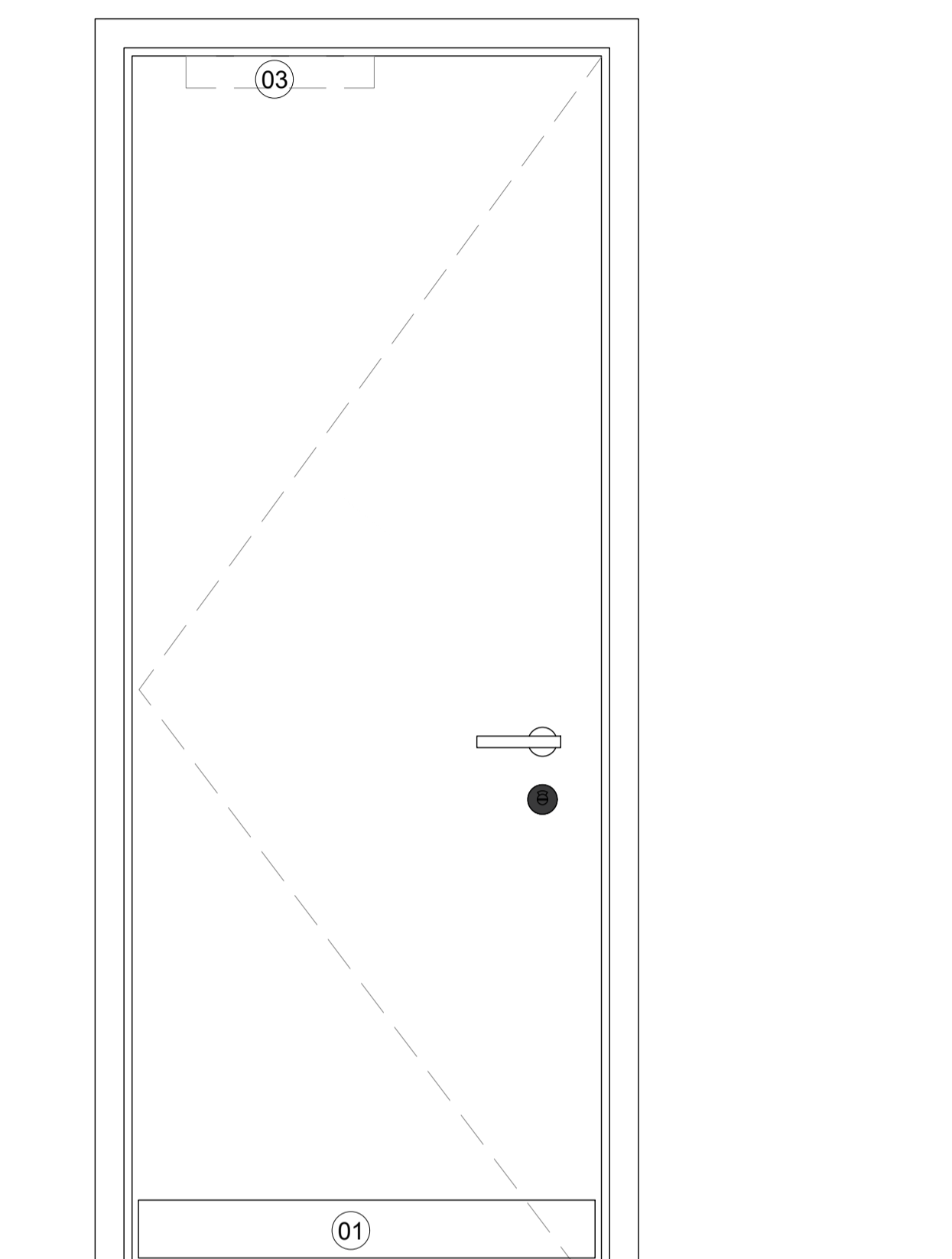


BARR GAZETAS

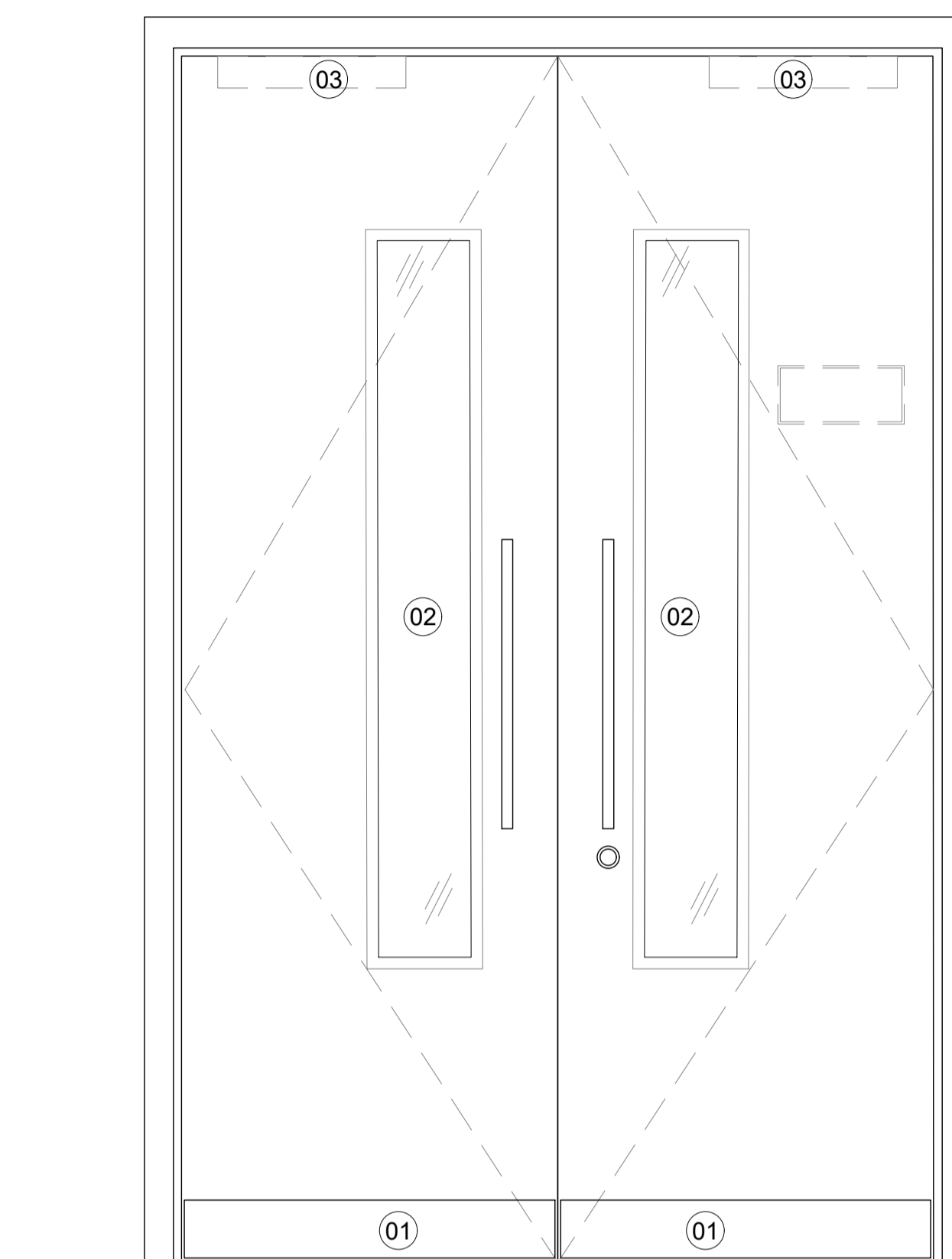
Note:

1. Kick plate
2. vision panel
3. concealed door closer
4. Architrave
5. intumescent smoke seal
6. solid core timber door

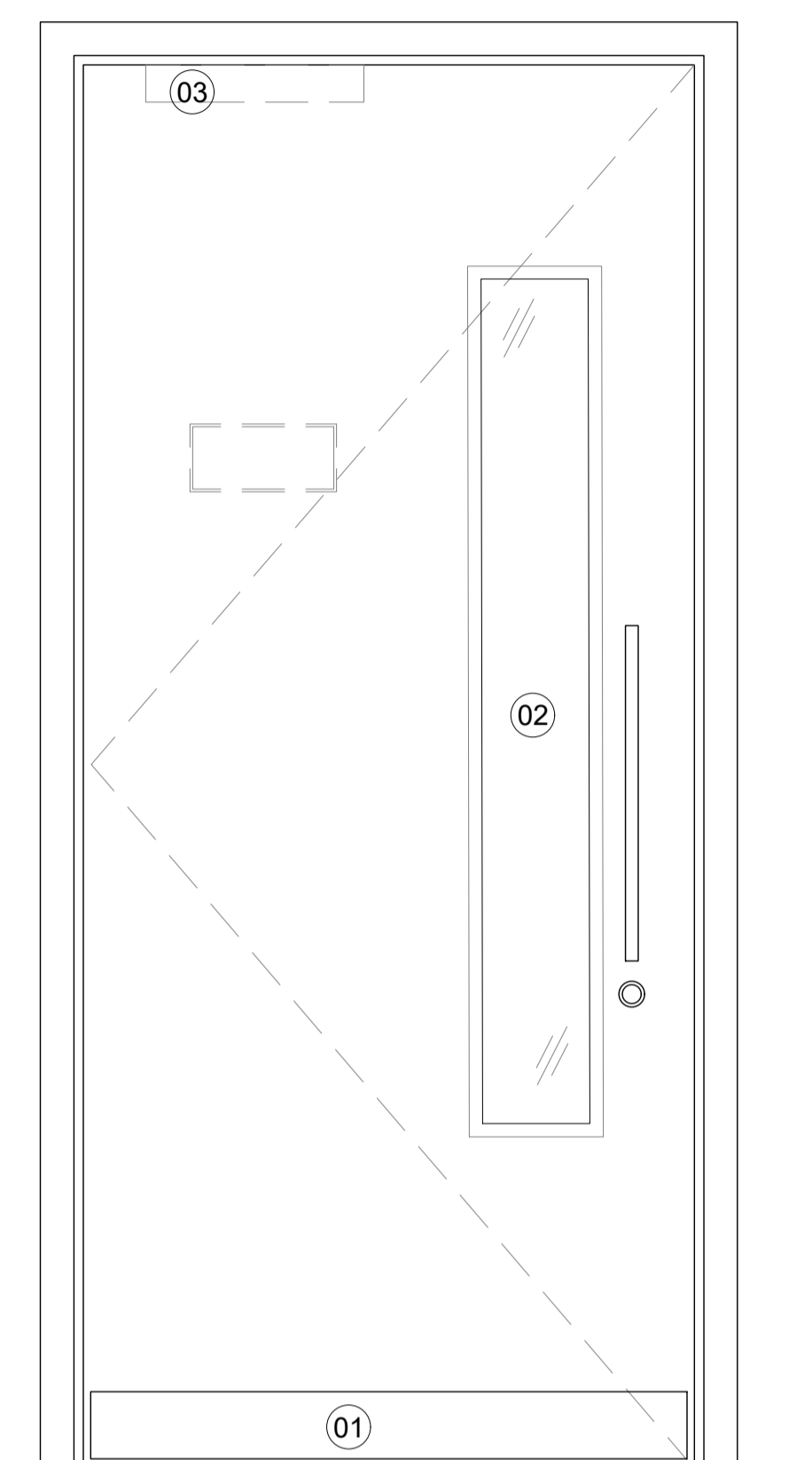
Door, architraves and frame finish: White RAL 9016



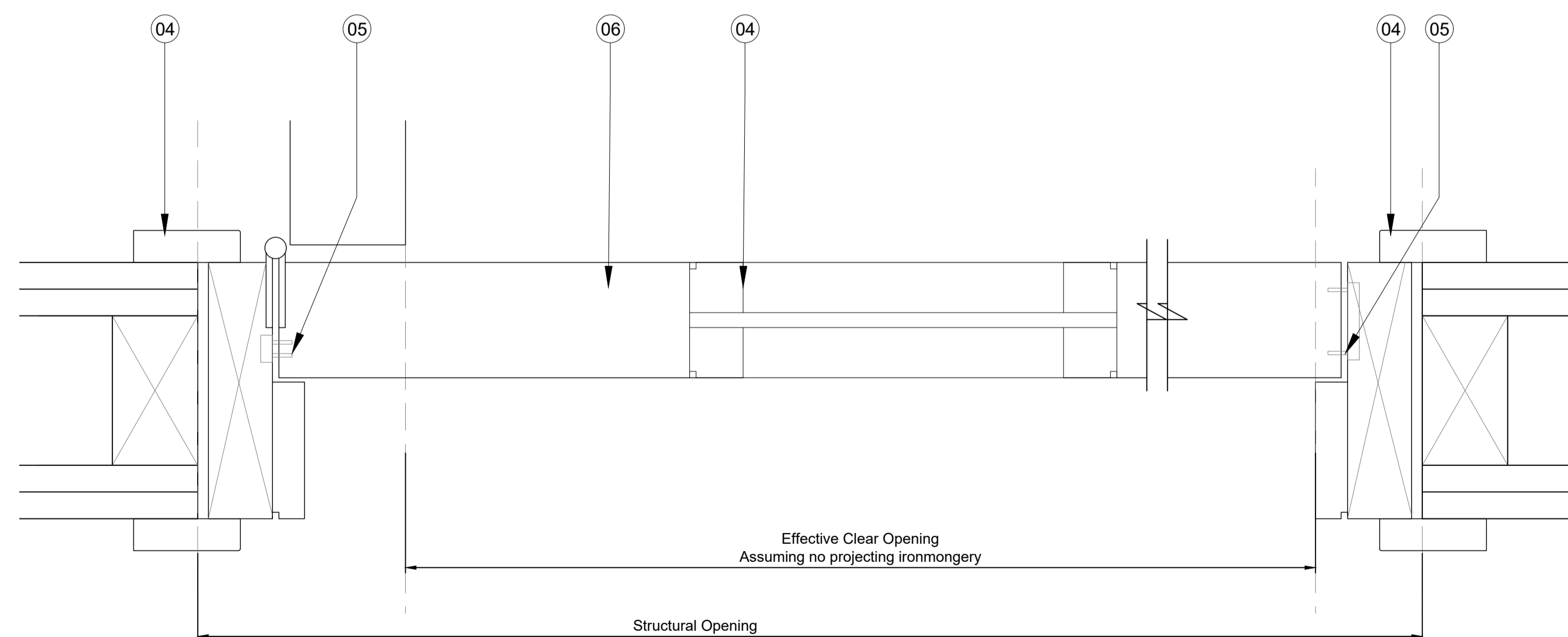
01 Typical New internal timber door elevation
32.601 1:10@A1 1:20@A3



02 Typical New internal timber door elevation- double door with vision panel
32.601 1:10@A1 1:20@A3



03 Typical New internal timber door elevation- single door with vision panel
32.601 1:10@A1 1:20@A3

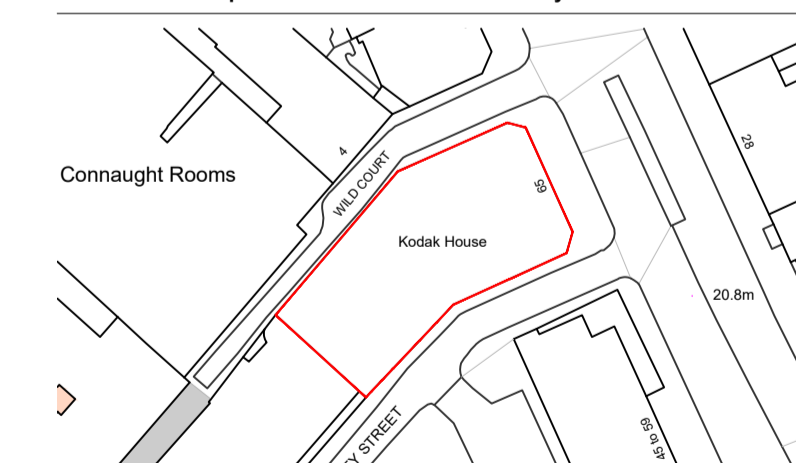


04 Typical Timber Door Detail
32.601 1:2@A1 1:4@A3

DOORS MUST NOT EXCEED OPENING FORCE OF 20N

Rev.	Description	By	Date
P1	For Planning	AC	05.07.22

Rev.	Description	By	Date
P1	For Planning	AC	05.07.22



Client
Kings Keeley Limited C/o Clearbell Capital LLP
Project
65 Kingsway - Base Scheme

Title
Timber Door Detail

Status	Purpose of issue	RIBA stage
S2	For Planning	2

Project No.	Drawn	Checked	Scale	Rev.
1914	FB	TJ	1:100 @ A1 1:200 @ A3	P1

Drawing No.
1914-BG-01-00-DRA-32.601

Do not scale from this drawing. The Contractor is to take and check all dimensions on site before work commences. Discrepancies must be reported to the Architect. Subcontractors must verify all dimensions on site before making a shop drawing or commencing manufacturing. This drawing is copyright ©

© Copyright Barr Gazetas Ltd.
A 110 Heddon Street, London, W1B 4BG
T 0207 638 5591
W www.barrgazetas.com