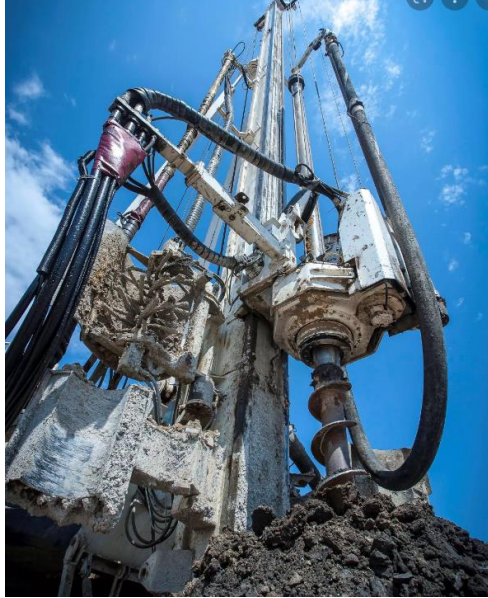


## Group Task Briefing - CFA – Boring to depth and constructing a pile

Principle Contractor:		Deconstruct UK	
Responsible Contractor:		Deconstruct UK	
Site	247 Tottenham Court Road	Contract N <sup>o</sup>	F20753



### Task Details

The work will comprise of the installation Continuous Flight Auger (CFA) Piles

#### Description of Work

All staff are to be briefed on the WPP and TB and sign the attached sheet to confirm that they understand the briefing and the works to be carried out.

- Prior to any boring Permit to dig to be issued.
- Under supervision of the banksman the Piling Rig will be moved into position over the pile
- The rig operator will level the rig via the rig computer and input the pile details. When the operator has done this the banksman will carry out final checks on the position and verticality of the rig. He will then place the cap or bung into the bottom of the auger a thumbs up to the operator to let him know all is ok.
- The banksman will then put Barriers to the left and right of the auger to create an exclusion zone around the drilling area.
- When the banksman and operator are satisfied all is safe and correct the banksman will signal the operator to commence drilling.
- The operator will drill down to the pile depth and then signal the pump operator to commence pumping the concrete. The rig operator will then start lifting the auger whilst still spinning and construct the pile, the auger cleaner will clear the spoil off the auger whilst being extracted.
- The operator will pump concrete to the top of pile and signal the pump operator to stop pumping.
- The rig will then be moved off the finished pile under the control off the banksman, he will then instruct the excavator to remove the spoil from the top of pile.
- The banksman will then lift the reinforcement cage by means of a mechanical lift ether with the excavator/rig or crane
- The cage will then be lowered into the concrete and pushed down to ground level.
- The cage will have spacing wheels placed approx. every 1-2 meters as it goes into the ground the bars at top of cage will have protective caps placed on them, and a steel pile cover will be put over the top of the fresh pile for safety.
- The whole process will be repeated throughout the working day
- To remove pile arisings from site, the attendant excavator under control of banksman will load the material into dumpers and to the stockpile.
- On completion of the pile boring operation, the depth of the pile will be measured accurately using the telemetry of the rig computer and recorded on the computer and on the pile log.



## Group Task Briefing – CFA Use of Concrete Pump

Principle Contractor:		Deconstruct UK	
Responsible Contractor:		Deconstruct UK	
Site	247 Tottenham Court Road	Contract N <sup>o</sup>	F20753



### Task Details

The work covered in this task briefing comprises concreting using a concrete pump.

### Description of Work

All staff are to be briefed on the WPP and TB and sign the attached sheet to confirm that they understand the briefing and the works to be carried out.

### Selection of Personnel

- The safe operation of a concrete pump relies heavily on suitably competent personnel to carry out the required duties.
- Typically, the 'pump operator' will as a minimum hold the CPCS competence category (A44) for a 'trailer mounted concrete pump'.

### Planning

- Consideration must be given to the concrete pump location in relation to the piling works and the concrete hose routes in relation to the Plant and Vehicle Management Plan.
- Note – this will require regular, possibly daily review, during the piling works.
- The use of steel concrete pipes is preferred if an undisturbed run of pipe can be established and used for extended periods.
- At crossing points the hose should either be buried and protected with for example by a steel plate or bridged by a suitable ramp.
- The designated crossing routes must be communicated to all trade contractors on site to ensure all parties are using them.
- Note - concrete hose subjected to crushing by plant and vehicles crossing can be damaged internally, which could lead to premature failure of the hose.

### Maintenance

- Concrete hose maintenance and effective management of concrete hose on site are key elements in preventing premature failure of the hose.
- **ON SITE DAILY.** Pre shift visual inspection for damage, coupling securing pins, crossing points, whip checks in place where hose connections are off the ground (or all hose connections).
- All faulty or defective plant or equipment must be reported and if unsafe or if there is any doubt then the item must be immediately removed from service.

## Operation Control & Communication

- It is imperative that visual communication is maintained between the concrete pump operator, the piling rig attendant, and the piling rig operator at all times.
- If this is physically not possible then an alternative form of communication shall be established, for example, with radio contact, prior to commencement of pumping.

## Ready Mixed Concrete Trucks

- Full ready-mixed concrete trucks are top heavy with heavily loaded rear wheels.
- Following a brief discussion between the Pumpman and vehicle driver – the following general rules should be followed:
  - The Pumpman and driver must maintain line of sight with each other – otherwise reversing must stop.
  - Clear signals must always be given to the driver to ensure safety at the rear of the vehicle.
- Concrete delivery trucks shall be always banked from a position of safety when reversing

## Operational Safety

- A restraining chain must be fitted between the brackets on the concrete pump and the associated steel bends of the pump
- Hose safety whip checks must be used at all hose connections from pump

## Dealing with a Blockage

- Whenever a blockage occurs it is important to try and locate where the blockage might be i.e., which hose or pipe it is in this will be determined by the competent person. on finding where the blockage is the pump operator will back pump (put pump in reverse) to release the pressure.
- Once the pressure is released the hose or pipe can be split and the blockage removed. The hose or pipe can then be reconnected, the pump operator will then pump forward to ensure concrete flow is back to normal.

## Cleaning out the Pump

- Cleaning is generally carried out by use of water hose or pressure washer. Care must be taken to ensure that washings do not enter drains, watercourses, or other sensitive receptors.
- Under no circumstances shall cleaning of either the pump or the agitator be permitted during construction of a pile as additional water can be added to the concrete mix affecting its workability.
- The pump must be switched off before raising the grille and washing down the hopper.

## Cleaning Pipelines

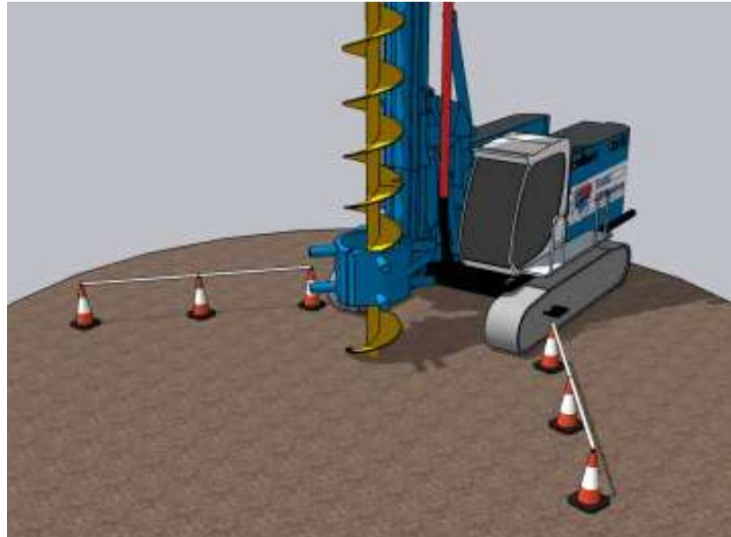
1. Cleaning pipelines using compressed air is a potentially hazardous operation and must only be carried out by competent personnel. **All other trades and non-piling personnel should stay away while this procedure is taking place**
2. When cleaning pipelines, always: Use a cannon (4 or 5 inch) and check the pressure relief valve is in good working order. **(It is the pump operator's responsibility to keep the cannon clean and in good working order)**
3. Disconnect the concrete pipe from the concrete pump. And place a 4- or 5-inch sponge ball into the hose then attach the cannon ensure its on a firm level surface and the **pressure relief valve is pointing upwards**
4. Ensure that the end of the concrete hose is disconnected from the back of the rig and connected to the blow out chamber.
5. Ensure that there is a clear line of vision between the concrete crew and the air line operator. **Ensure all other personnel are well away from the blowout chamber**
6. The pump operator or competent person should then open the regulator gradually and apply pressure to the concrete line under the supervisors' instructions until it is clear
7. Once clear **the relief valve on cannon should be opened to ensure all pressure has been expelled before the concrete line can be disconnected reconnected to the back of the rig** the sponge ball will then be placed back into the hose. The rig will then be banked by the banksman to the blowout bin and the auger tip placed inside.
8. Once this is done points 5 and 6 will be repeated until the rest of the rig and augers are clear.
9. When all concrete is clear of the lines the cannon will be removed and water will be poured into the lines again a sponge ball will be inserted, and the cannon reconnected this time under the supervisors' instructions the water will be blown through the lines as a final clean out. The rig will then be banked away and parked up
10. **Blow out chamber and blow out bin will be washed down along with rig and other equipment**





## Group Task Briefing – CFA Rig Guarding & Exclusion Zones

Principle Contractor:		Deconstruct UK	
Responsible Contractor:		Deconstruct UK	
Site	247 Tottenham Court Road	Contract N <sup>o</sup>	F20753



### Task Details

This task briefing covers the execution of rig guarding and exclusion zones. This task briefing is in accordance with the FPS notes for guidance on PUWER in relation to guarding and cleaning of augers on piling operations in association with the HSE.

### Description of Work

All staff are to be briefed on the MS and TB and sign the attached sheet to confirm that they understand the briefing and the works to be carried out.

### Rig guarding and exclusion zones must be maintained and enforced at all times.

- A controlled zone must be set up at each pile location. This zone will extend 2m beyond the area by the rig, its slewing area and the pile bore.
- This will be established using traffic cone barriers along with appropriate signage.
- The banksman will be in attendance to the piling rig and will be given the responsibility and authority to ensure only authorised persons are permitted with the zone.
- All persons entering the zone must have received an induction and briefing.
- The banksman will be trained as a rig attendant and have a minimum of one day's safety training within the previous 12 months.

### Auger Cleaning

- When pulling the augers to concrete a pile the auger cleaner will be engaged, all operatives must be a safe distance from the front of the rig from falling spoil.

### Resources

3No. Operatives; Plant Operators and Banksman (CPCS)







## Group Task Briefing - Mobilisation of Plant & Equipment (CFA)

Principle Contractor:		Deconstruct UK	
Responsible Contractor:		Deconstruct UK	
Site	247 Tottenham Court Road	Contract N <sup>o</sup>	F20753



### Task Details

The work will comprise of the mobilisation/unloading of low headroom piling rig(s) and ancillary piling equipment.

### Description of Work

All staff are to be briefed on the WPP and TB and sign the attached sheet to confirm that they understand the briefing and the works to be carried out. All lift plans should be briefed and signed off before lifting operations begin.

- A piling platform certificate (for all areas) will be issued prior to mobilisation of heavy equipment onto the piling mat.
- All relevant certification for the rig / crane will be in place and will be checked prior to the offloading of the equipment (e.g. thorough examination and service records).
- A semi-low loader will deliver the Rig/Crane unit to site via the designated route.
- The piling rig will track off the low loader and on to site under the close supervision of a clearly identified competent banksman.
- No plant movements are allowed without the banksman.
- Under supervision of banksman the rig will track to the piling mat.
- Once on the piling platform the piling rig can be fully rigged.
- In most cases an agitator (concrete drum) will be delivered on a Hiab and placed in a predetermined spot normally off the piling area
- Some items will be delivered by external hire companies on Hiab's all external companies will have the relevant certification
- A flat bed truck will deliver the rest of the ancillary equipment
- In most cases the attendant excavator will be used to lift equipment off of the trucks
- Should there be a requirement for operatives to access the back of the delivery lorry, then the back of the lorry will have provisions for either a bespoke handrail system or fitting of a fall restraint system.
- A 10x10 Stores Container will be off loaded via the Hiab wagon.

### Resources

3No. Operatives; Plant Operators and Banksman (CPCS)

