

GROUP METHOD STATEMENT

247 Tottenham Court Road – CFA Piling Works

Acceptance by Group						Acceptance by Main Contractor	
Submittal History	Date:	Prepared by:	Checked by:	Approved by:	Description of modifications:	Accepted by	Date:
Rev 001	22.6.22	K.Herbert	A.Macdonald	A.Macdonald	Comments and approval		

Comments

Method Statement for: SF65 and SR75

Piling Operation: CFA

Contract No:	F20753
Contractor:	Deconstruct UK
Site Address:	247 Tottenham Court Road, London, W1T 7QZ
Project Manager:	Pat Pearson
Mobile No:	07900788087
Normal Working Hours:	0800-1800 Monday to Friday
Project Type:	CFA secant wall and contiguous wall for basement works
No of Piles:	266 secant wall piles & 72 contiguous wall piles
Pile Diameter:	750mm and 900mm up to 18M in depth
Contract Start Date	Tbc



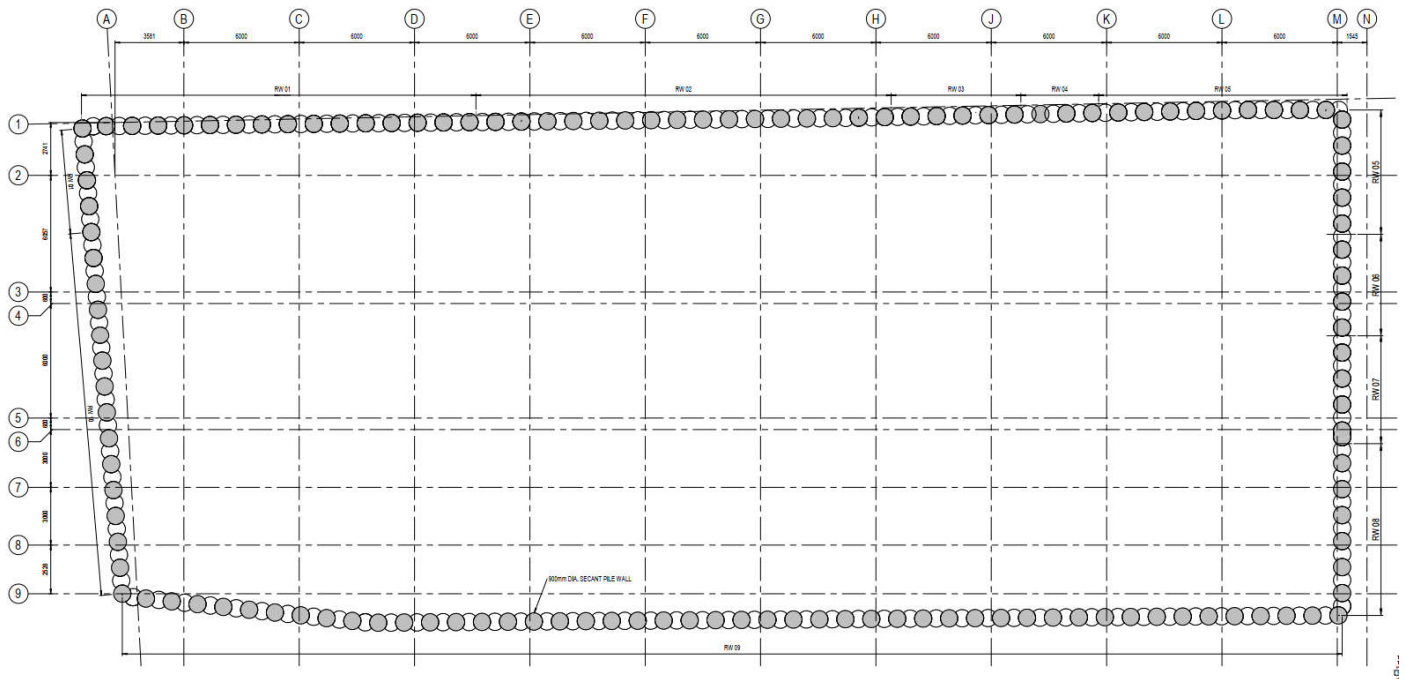
CONTENTS

1.	SCOPE OF WORK	4
2.	PROGRAMME.....	4
3.	RESPONSIBLE PERSONS WITHIN GROUP.....	4
4.	SITE LOCATION AND ACCESS.....	5
5.	PLANT AND MACHINERY MOVEMENTS.....	6
6.	PILING PLATFORM REQUIREMENTS.....	6
7.	EXISTING SERVICES	6
8.	EMERGENCY ARRANGEMENTS	7
9.	HEALTH & SAFETY.....	7
10.	SITE OPERATIVES/TRAINING	8
11.	SUPPLIED PLANT & EQUIPMENT	9
12.	FRANKI FOUNDATIONS UK GROUP REQUIREMENTS	9
13.	METHODOLOGY	10
14.	ENVIRONMENTAL	11
15.	QUALITY CONTROLS.....	11
16.	EMPLOYEES CONFIRMATION	13

1. Scope of Work

The proposed work is the construction of 338 nr secant and contig wall CFA piles for the 247 Tottenham Court Road project. The piles are 900mm and 750mm diameter and will be constructed using the CFA piling technique outlined in the following method statement and associated task briefings.

Pile Layout -



2. Programme

The start date for the project is programmed for w/c 21/08/22 (tbc) and will be completed in one visit. The works are expected to take approximately 12 rig weeks not including the follow-on testing. It is planned for two CFA piling rigs to mobilise and work concurrently, therefore we would expect and overall piling programme of 6 weeks.

Deconstruct have advised of a sequence that will see the piling works start at the Bayley Street end of the project, and work along Tottenham Court Road/Morwell Street towards the Oxford Street end of the project.

3. Responsible Persons within Group

Position	Responsibilities	Contact	Contact Details
Group Managing Director	Director of Health & Safety at Franki Foundations UK Group to implement, co-ordinate and control the administration of Health and Safety matters within the company	Craig Macklin	01322 479000 craig.macklin@frankifoundations.co.uk
Group Operations Director	Director of contracts and new developments, control all Operational matters within the company	Alistair Macdonald	01322 479000 07972 502951 alistair.macdonald@frankifoundations.co.uk

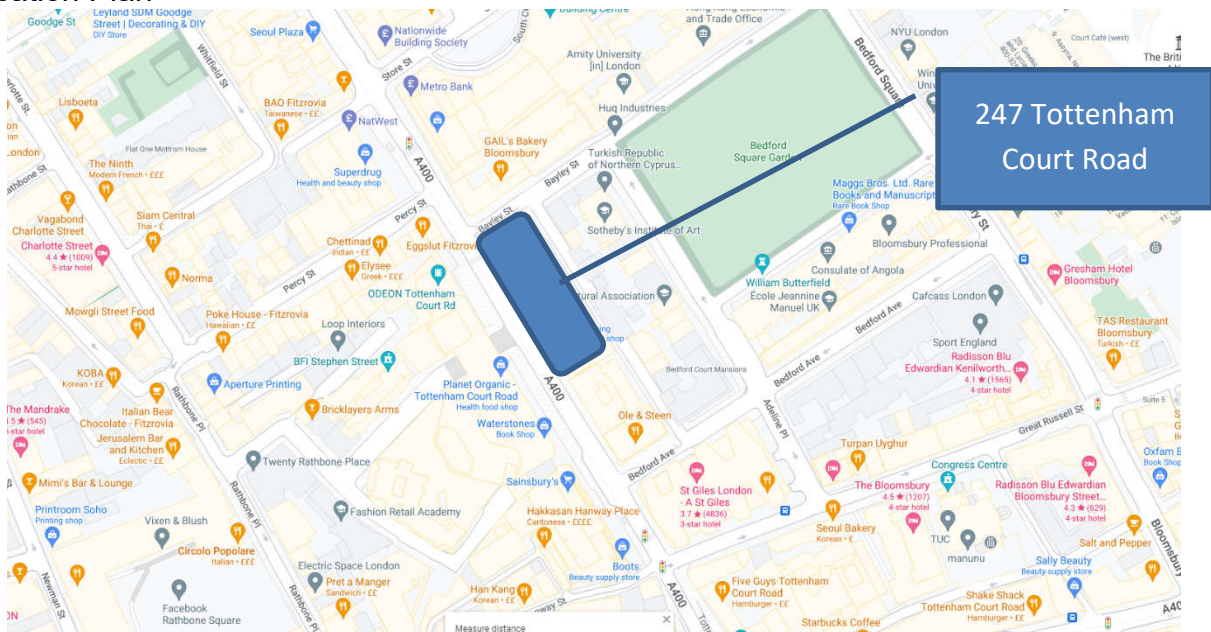
<p>Group Health & Safety Manager</p>	<p>To monitor, control and correct the H&S actions of all employees and others under his jurisdiction to ensure H&S is prioritised and that the company's H&S Policy is fully understood/ implemented. To investigate accidents, incidents and near misses</p>	<p>Alan Turner</p>	<p>01322 479000 07917 186 160 alan.turner@martellopiling.com</p>
<p>Contracts Manager</p>	<p>To manage all contracts and ensure that any new developments are communicated both quickly and effectively to all company staff.</p>	<p>Kieran Herbert</p>	<p>07972 870 780 Kieran.herbert@frankifoundations.co.uk</p>
<p>Operations Manger</p>	<p>To manage all contracts and ensure that any new developments are communicated both quickly and effectively to all company staff.</p>	<p>Steve Wright</p>	<p>01322 479000 07387 022497 steve.wright@frankifoundations.co.uk</p>
<p>Foreman /Supervisor</p>	<p>To ensure all operations on site are carried out in a safe manner To manage Site Staff within the groups legal requirements, policies, works program. groups Site FIRST AIDER</p>		

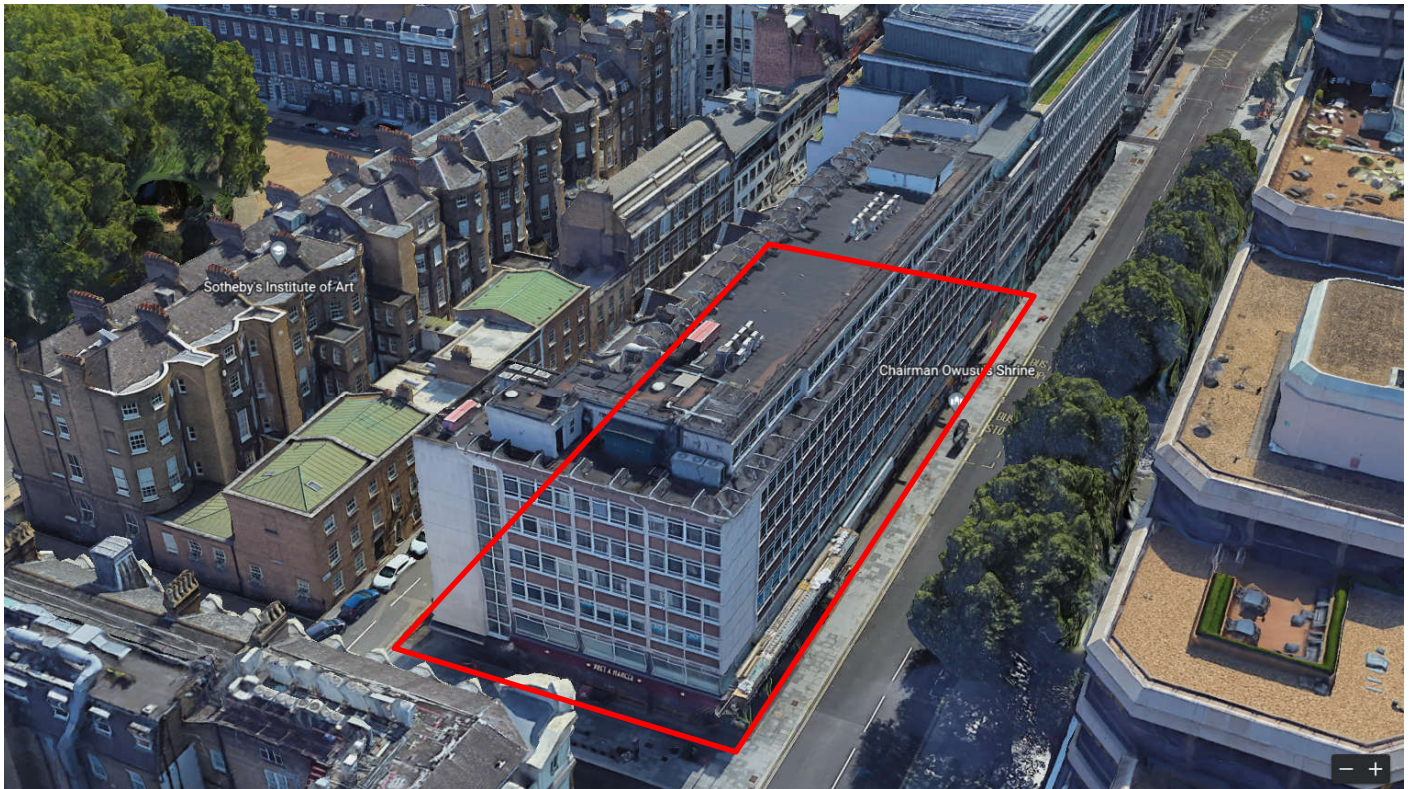
4. Site Location and Access

The site gates and boundaries will be maintained and operated by the Main Contractor, the boundary will be formed of site hoarding or line Herras fencing and will be suitable to prevent unauthorised access by the public.

The piling rig will access the site via the designated site entrance along with all other plant and material deliveries. All piling operatives will access the site through the designated pedestrian entrance and make their way to the Main Contractors office where site inductions will be held on the first day.

Site Location Plan –





5. Plant and Machinery Movements

All plant and vehicle movements will be under the control of a vehicle marshal or banksman. Exclusion zones around plant must be enforced along with plant and pedestrian segregation by means of barriers.

6. Piling Platform Requirements

The main contractor is responsible for providing the rig and crew with a firm and level piling platform as specified within the piling platform design document.

The piling platform must be installed and maintained throughout the piling works as per the design document and signed off on the FPS working platform certificate. The piling mat will be inspected weekly by Franki and the Main contractor to confirm acceptance and at any intervals between deemed necessary if repairs need to be or have been undertaken.

Clear marking of the platform boundaries must be in place on the piling platform to ensure the rig does not track onto area that are not installed as per the design. The piling platform should be installed a minimum of 2M pas the furthest pile positions on all sides.

The rig must not be stood up until the working platform certificate has been signed by the Main Contractor.

7. Existing Services

The main contractor must carry out all necessary inspections for existing services and probe for existing substructures in line with HSE ACOP HSG47. These areas are to be removed or clearly marked prior to the commencement of any piling works. All efforts must be made by the Main Contractor to isolate any services near the piling works.

IF piling works are to be carried out near existing services, they must be exposed and protected to ensure the piling works do not affect the service in any way.

Deconstruct UK have stated that any Thames water runs found whilst breaking out the basement will be bunged to stop any potential for spill into connected sewers.

A permit to dig must be issued and signed by the main contractor prior to piling that highlights any services that may affect the work and any additional control measures that may need to be taken.

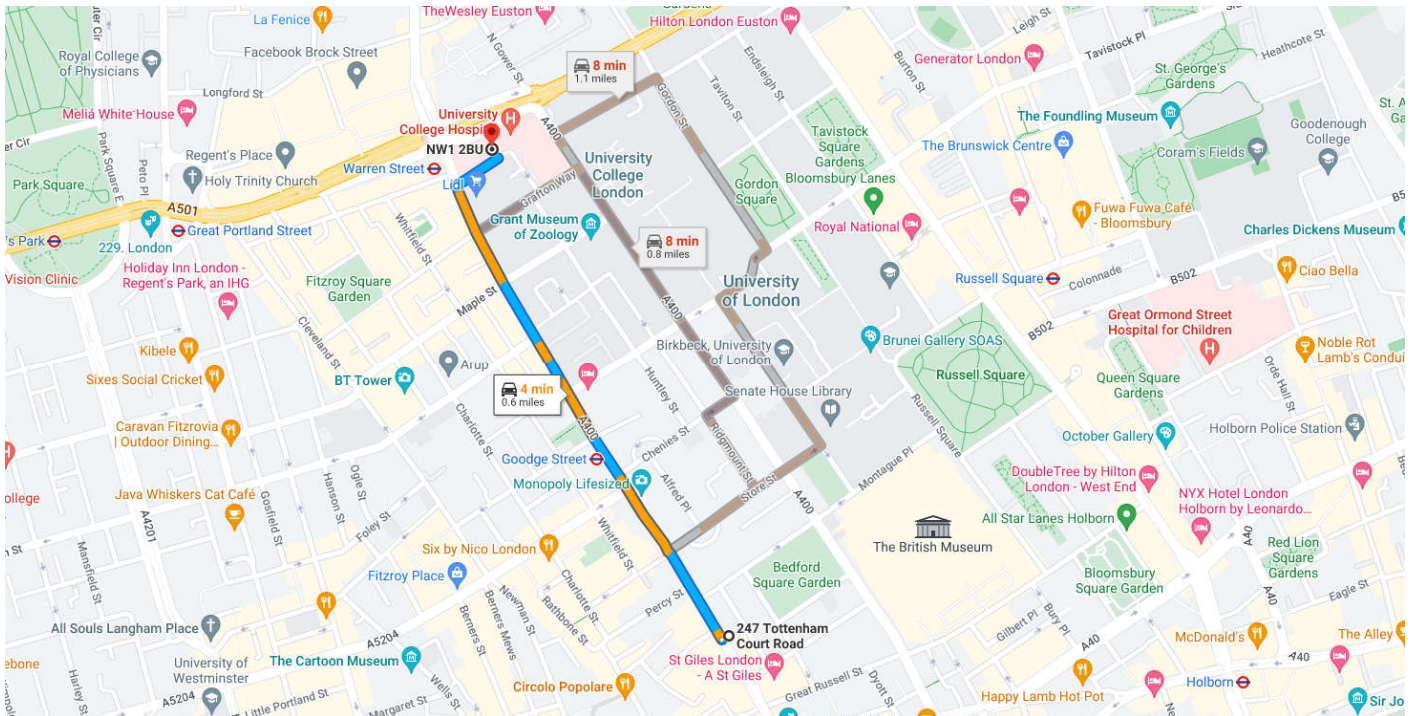
8. Emergency Arrangements

In the event of an emergency, works are to stop immediately & be made safe. If necessary, contact the emergency services (999). Notify site manager/supervisor.

If a fire is discovered, raise the alarm and evacuate the site as per the fire plan.

The nearest hospital is:

University College Hospital,
235 Euston Road,
London,
NW1 2BU



The Rig Driver/Site Supervisor is the person in control of the works at site level. Should any problems arise beyond his authority, the contracts manager or operations manager should be contacted.

9. Health & Safety



The Groups employees will always operate in a safe and diligent manner in accordance with their Health & Safety Policy. They will work in accordance with the method statement and risk assessment at all times.

Personnel Protective Equipment will be worn at all times whilst on site the company’s minimum requirement is: Hard Hat, Safety Boots, Safety Glasses, Gloves and Hi-Viz Vest or Jacket. Additional Personnel Protective Equipment will be worn for site specific work as required by the risk assessment i.e. Overalls and Ear Defenders.

Health & Safety is monitored daily by the construction Manager and any incidents, accidents or near misses are investigated promptly. All employees are encouraged to report any accidents, incidents or near misses to the construction manager.

Site Inspections are carried out monthly; any findings are passed on to the relevant managers to act.

The group has a Safety, Quality & Environmental Committee which meets weekly to discuss issues arising.

All Group site employees will undertake the Deconstruct UK site induction before commencing work on site.

10. Site Operatives/Training

The following labour is envisaged for the piling operations of this project:

Site Personnel	Competence	Quantity
Non-working Supervisor	SMSTS	1
Foreman/Rig Driver (Certified Rig Operator)	SSSTS / CPCS rig operative bored above 15 tonnes	2
Banksman (Certified Banksman / Slinger)	CPCS Slinger Signaller	2
General Piling Operative / spanner man	CSCS card holder	2
Excavator Operator C/O The Main Contractor	CPCS excavator operative with lift and carry	1
Steel Fixer	CSCS	1

No Group employee is to use equipment for which they have not been trained and authorised by Franki Foundations UK Group Management.

11. Supplied Plant & Equipment

Franki Foundation UK Group will supply the plant and equipment below for the contract.

Item	Quantity
Soilmec SF65 CFA piling rig	1
Soilmec SR75 CFA piling rig	1
Excavator C/O The Main Contractor	2
Concrete trailer pump and equipment	2
Double tool compressor and hose	2
Piling Job Box / toolbox	2
Delivery trucks/vans	As required
MEWP	1
Agitator	2
Jet washer	2
Fuel Bowser (double bunded 1000L)	2

All plant and equipment will be certified tested and maintained in accordance to PEWER 98 and where applicable LOLER 98.

All lifting gear will be certified, tested, and maintained in accordance with LOLER 98.

12. Franki Foundations UK Group Requirements

1. Deconstruct UK will provide the following:
2. The nearest accident and emergency hospital together with direction is to be provided to site operatives during the site induction by the Principal Contractor. (Indicated in the Construction Phase Plan).
3. The Principal Contractor will provide first aid facilities as required. Franki Foundations UK Group personnel will be made aware of the identity and location of these facilities during the site induction.
4. Identification, excavation and or protection of all services (chartered or un-chartered) within the site access route and the site area. These include but not limited to electricity, water, telecoms, gas, and sewerage.
5. Protection / excavation and capping of all ducts, pipes, channels, culverts, and sewers to prevent damage and loss of concrete.
6. Protection to adjacent buildings, pathways, highways from spoil, concrete slurry and bore spoil debris.



7. Provision of service drawings relevant to pile locations). Identification and maintenance of service locations and easements zones on site.
8. The principal contractor will provide a permit to pile, confirming pile positions are clear of all site services (chartered or un-chartered) .
9. All work areas to be segregated.
10. Health & Safety requirements and welfare facilities with accordance to the CDM 2015 regulations.
11. An attendant 360 Tracked Excavator [Minimum 13 Tonne] & Qualified Driver to be always in 100% attendance.
12. Install and maintain the working platform when required.
13. To protect the public from the piling works.
14. To provide road protection for unloading the piling rig (8x4 ply).
15. To provide mains water to the Group foundations holding drum.

13. Methodology

The CFA pile installation method has been broken down into individual Task Briefing documents (TBS) to explain in detail the process of each task. The TBS will be used on site to familiarise the task specific requirements and responsibilities for each person responsible for that element of the works. The following TBS are to be used for this project:

Ref:	Title:
23	CFA Boring to Depth and Constructing a Pile
24	CFA Use of Concrete Pump
25	CFA Rig guarding and Exclusion Zones
26	CFA Setting up a Pile Position
29	Mobilisation of Plan and Equipment CFA

13.1 Rigging and Derigging

The rigging and derigging process will be carried out in line with the machine operator’s manual and will be carried out by the trained and competent rig operator and banksman. The rigging and derigging process must only be carried out on the signed of working platform area.

13.2 Steel reinforcement

Steel reinforcement will be as detailed in the Franki foundations pile design schedule for the project.



Steel will be delivered prefabricated and pre slung on the back of a HIAB or articulated flatbed lorry at suitable intervals to service the contract.

13.3 Party Wall

It is the responsibility of the Main Contractor to have in place a procedure for working adjacent to the party walls and have the necessary agreements in place.

13.4 Securing Equipment Daily

The piling rig will be banked into a designated area to park, the rig will be levelled and the foot lower on to the piling mat. The rig driver will lock all the doors on the rig making sure everything is safe then turn off the earth lever.

All small tools and equipment will be locked into the site toolbox/cabin.

14. Environmental

1. Franki Foundations UK Group has an environmental management system in place.
2. Franki Foundations UK Group adequately manages our works to prevent pollution and continually improve the environmental activities of our piling operations.
3. Franki Foundations UK Group will work closely with Deconstruct UK to ensure all environmental issues are managed quickly and efficiently.
4. Franki Foundations UK Group will supply a spillage kit and this will be kept near the oils and diesels at all times.

15. Quality Controls

5. Franki Foundations UK Group have achieved ISO 9001 certificate and have a quality management system in place which is review constantly to improve our quality.
6. A pile design and (working platform design if required) will be sent to the client prior to the piling rig arriving to site.
7. On commence of the contract a Contracts Supervisor will be on site to assess the site before drilling commences.
8. The rig driver will have a drawing with piles and depths on and will check with the banksman on every pile, these are recorded on a log sheet in the cab and on the on-board computer. At the end of each day details are rung into the office and the information logged on the Groups computer system which makes sure of correct depth, steel and wastage on all piles.
9. Cubes are taken if requested by the client these are taken by a specialized company that arrive on site make cubes and then the cubes are tested at 7 and 28 days to confirm the strength of concrete. Results are released after testing.
10. Integrity testing take place if requested by the client at a minimum off 7 days after the piles were formed, the client rings Franki Foundations UK groups offices and informs when they will



be ready, a specialized company arrives on site and tests the integrity of the pile. Results are released after testing.

11. Through out the contract of work the operations manager, contracts manager and constructions manager will monitor the quality daily.



16. Employees Confirmation



Group Briefing Attendance Sheet

Contract:		Contract No:	Date:
Briefing Type (tick as appropriate)	Title	Ref No.	Revision
General Daily Briefing			
Method Statement			
Risk Assessment			
COSHH Assessment			
Procedure			
Tool Box Talk			
Other			
N.B. – Signing of this form constitutes a declaration that you have fully understood the contents of the briefing given.			
Name (Print)		Signature	Date
1			
2			
3			
4			
5			
6			
7			
8			
9			
10			
11			
12			
13			
14			
15			
16			
17			
18			
I, the undersigned, declare that I have briefed the above personnel on the briefing as stated.			
Name (Print):		Signature:	
Company:		Date:	