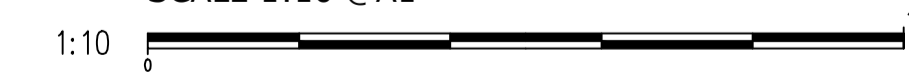


PROPOSED FRONT FASCIA SIGN DETAILS - GOODGE ST
SCALE 1:10 @A1

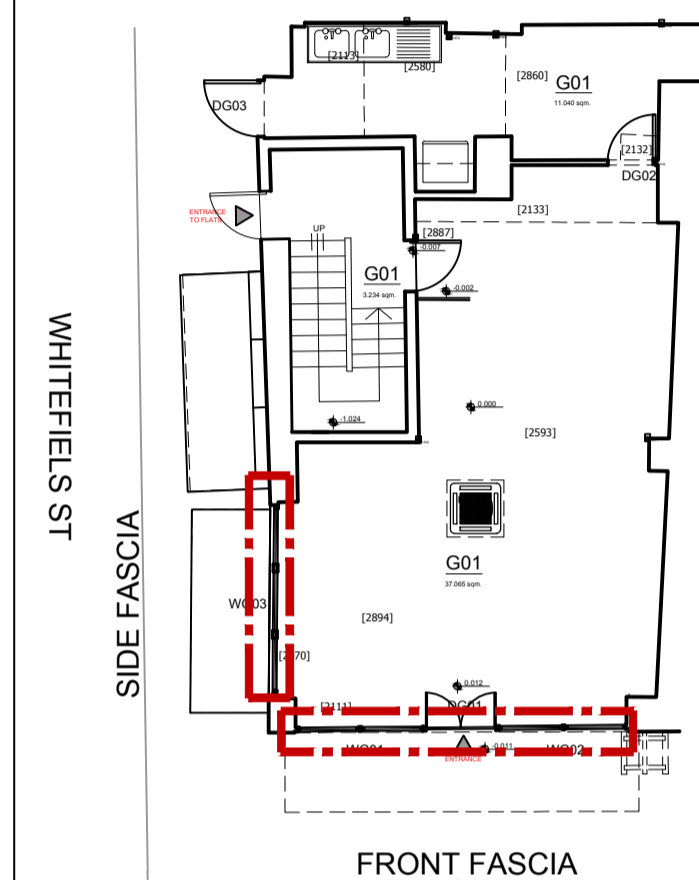


PROPOSED SIDE FASCIA SIGN DETAILS - WHITEFIELD ST
SCALE 1:10 @A1



- NOTES:
- THIS DRAWING IS TO BE READ IN CONJUNCTION WITH ALL RELEVANT ARCHITECTS AND ENGINEERS DRAWINGS DETAILS AND SPECIFICATION.
 - SETTING OUT TO BE THE RESPONSIBILITY OF THE CONTRACTOR. ALL DIMENSIONS TO BE CHECKED ON SITE PRIOR TO COMMENCEMENT OF WORK AND ANY DISCREPANCIES TO BE NOTIFIED TO THE ARCHITECT.
 - ALL VARIATIONS IN ASSUMED STRUCTURE TO BE NOTIFIED TO THE ENGINEER.
 - ALL DIMENSIONS TO BE CHECKED ON SITE.
 - ALL DIMENSIONS TO BE CHECKED AND CONFIRMED ON SITE.
 - ALL DISCREPANCIES ARE TO BE REPORTED TO AND RESOLVED BY THE ARCHITECTS BEFORE WORKS ARE COMMENCED.
 - THIS DRAWING IS NOT TO BE SCALED.
 - ALL WORK AND MATERIALS TO BE IN ACCORDANCE WITH THE BUILDING REGULATION DEPARTMENT AND TO COMPLY WITH ALL RELEVANT CODES OF PRACTICE AND BRITISH STANDARD.

LOCATION PLAN



GOODGE ST

GROUND FLOOR	sqm	52.65	
BASEMENT	sqm	66.05	
	sqm	TOTAL	118.7

REV. NO.	DESCRIPTION TO REVISION	REV. BY	DATE
TEXT	TEXT	TEXT	TEXT
TEXT	TEXT	TEXT	TEXT
TEXT	TEXT	TEXT	TEXT
TEXT	TEXT	TEXT	TEXT
TEXT	TEXT	TEXT	TEXT
TEXT	TEXT	TEXT	TEXT
TEXT	TEXT	TEXT	TEXT
TEXT	TEXT	TEXT	TEXT
TEXT	TEXT	TEXT	TEXT
TEXT	TEXT	TEXT	TEXT
TEXT	TEXT	TEXT	TEXT
TEXT	TEXT	TEXT	TEXT
TEXT	TEXT	TEXT	TEXT
TEXT	TEXT	TEXT	TEXT
TEXT	TEXT	TEXT	TEXT
TEXT	TEXT	TEXT	TEXT
TEXT	TEXT	TEXT	TEXT
TEXT	TEXT	TEXT	TEXT
TEXT	TEXT	TEXT	TEXT
TEXT	TEXT	TEXT	TEXT
TEXT	TEXT	TEXT	TEXT

ADMERLIN DESIGN STUDIO
88 MILL LANE
LONDON NW6 1NL
T: 0203 011 0449
E: info@admerlin.com
F: admerlin.com



CUSTOMER: **MISTER LASAGNA**
PROJECT: **ADM1622 - 19 GOODGE STREET, LONDON W1T 2PH**

DISPLAY AN ADVERT APPLICATION
PROJECT PORTION: **PROPOSED FASCIA SIGN DETAILS**
CHECKED PROP: APPROVED PROP CLIENT APPR. ENGINEER APPR.
30.06.2022
DRAWN BY: RE SCALE: 1:20 REFERENCE TO: PAPER SIZE: A1

P307-00 REV.