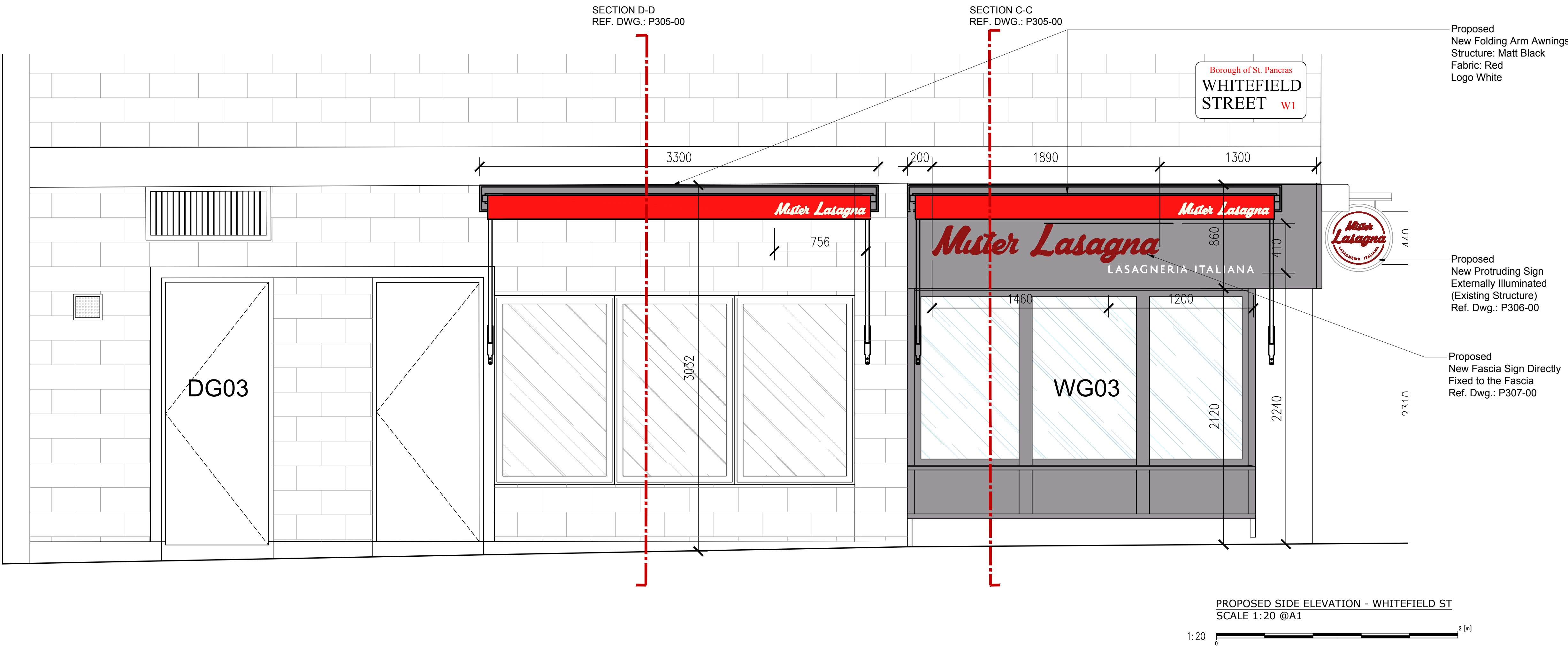
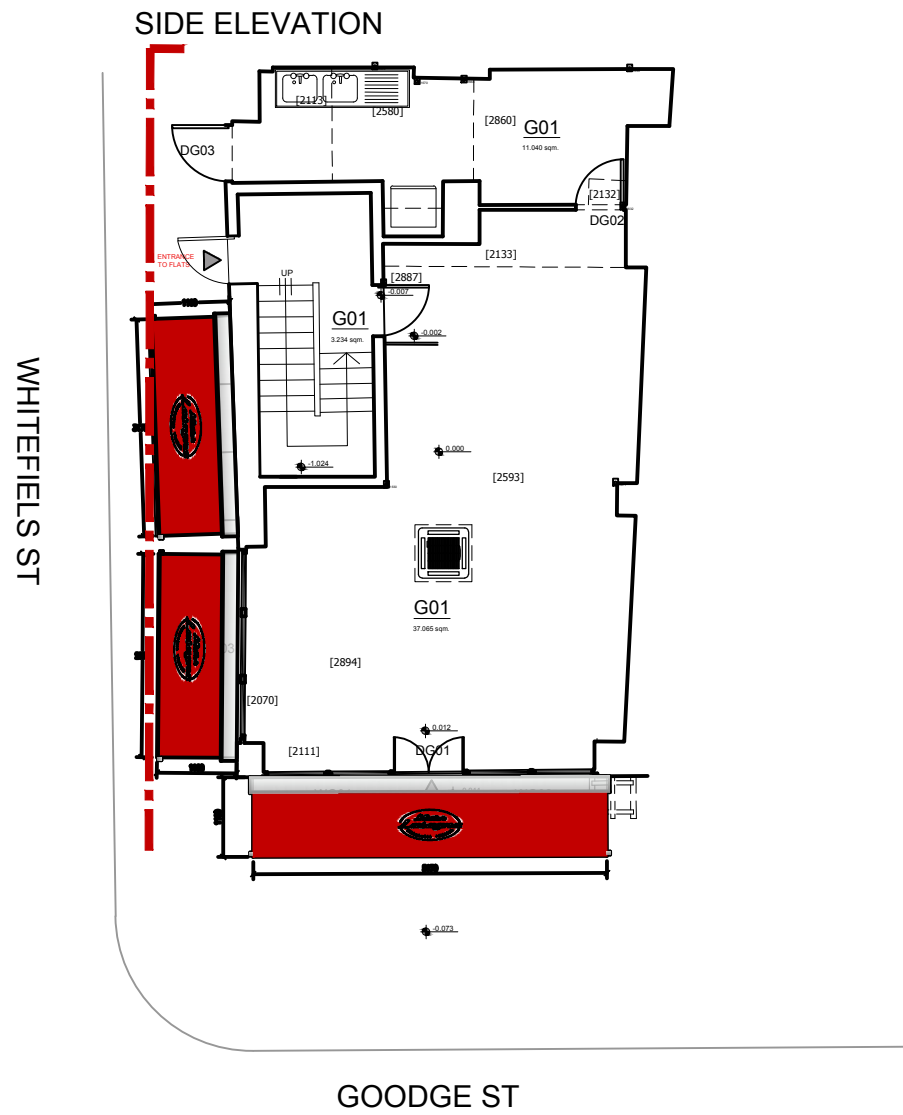


- NOTES:
- THIS DRAWING IS TO BE READ IN CONJUNCTION WITH ALL RELEVANT ARCHITECTS AND ENGINEERS DRAWINGS DETAILS AND SPECIFICATION.
  - SETTING OUT TO BE THE RESPONSIBILITY OF THE CONTRACTOR. ALL DIMENSIONS TO BE CHECKED ON SITE PRIOR TO COMMENCEMENT OF WORK AND ANY DISCREPANCIES TO BE NOTIFIED TO THE ARCHITECT.
  - ALL VARIATIONS IN ASSUMED STRUCTURE TO BE NOTIFIED TO THE ENGINEER.
  - ALL DIMENSIONS TO BE CHECKED ON SITE.
  - ALL DIMENSIONS TO BE CHECKED AND CONFIRMED ON SITE.
  - ALL DISCREPANCIES ARE TO BE REPORTED TO AND RESOLVED BY THE ARCHITECTS BEFORE WORKS ARE COMMENCED.
  - THIS DRAWING IS NOT TO BE SCALED.
  - ALL WORK AND MATERIALS TO BE IN ACCORDANCE WITH THE BUILDING REGULATION DEPARTMENT AND TO COMPLY WITH ALL RELEVANT CODES OF PRACTICE AND BRITISH STANDARD.

LOCATION PLAN



ADM1622 19 Goodge Street, London W1T 2PH	
LEGEND	
FLOOR FINISHES	
FL-V	FLOOR VINYL
FL-W	FLOOR TIMBER
FL-C	FLOOR CONCRETE
WALL FINISHES	
W-P	PAINTED WALL
W-B	LONDON BRICK
W-T	TAILED WALL
CEILING FINISHES	
OTHERS	
S-P	PERSPEX / POLYCARBONATE
AL	ALUMINUM POWDER COATED
GS	SAFETY GLASS

GROUND FLOOR	sqm	52.65	
BASEMENT	sqm	66.05	
	sqm	TOTAL	118.7

REV. NO.	DESCRIPTION TO REVISION	REV. BY	DATE
TEXT	TEXT	TEXT	TEXT
TEXT	TEXT	TEXT	TEXT
TEXT	TEXT	TEXT	TEXT
TEXT	TEXT	TEXT	TEXT
TEXT	TEXT	TEXT	TEXT
TEXT	TEXT	TEXT	TEXT
TEXT	TEXT	TEXT	TEXT
TEXT	TEXT	TEXT	TEXT
TEXT	TEXT	TEXT	TEXT
TEXT	TEXT	TEXT	TEXT

ADMERLIN DESIGN STUDIO  
88 MILL LANE  
LONDON NW6 1NL  
T: 0203 011 0449  
E: info@admerlin.com  
F: admerlin.com

RIBA

CUSTOMER  
MISTER LASAGNA  
PROJECT  
ADM1622 - 19 GOODGE STREET, LONDON W1T 2PH

DISPLAY AN ADVERT APPLICATION  
PROJECT PORTION  
ENHANCED SIDE ELEVATION  
CHECKED PROP. APPROVED PROP. CLIENT APPR. ENGINEER APPR.  
30.06.2022  
DRAWN BY: RE SCALE: 1:20 REFERENCE TO: PAPER SIZE: A1

P304-00

REV.