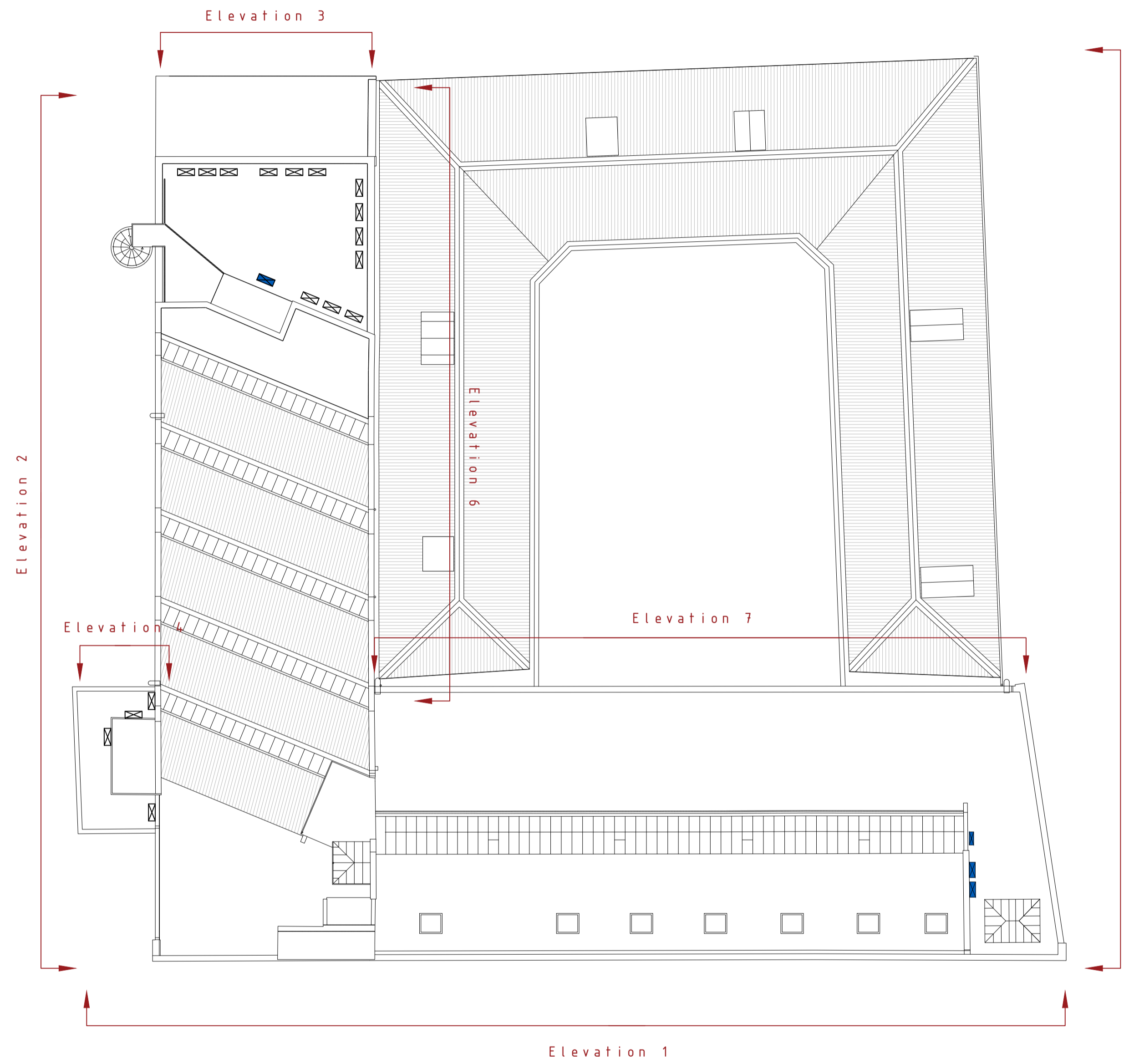


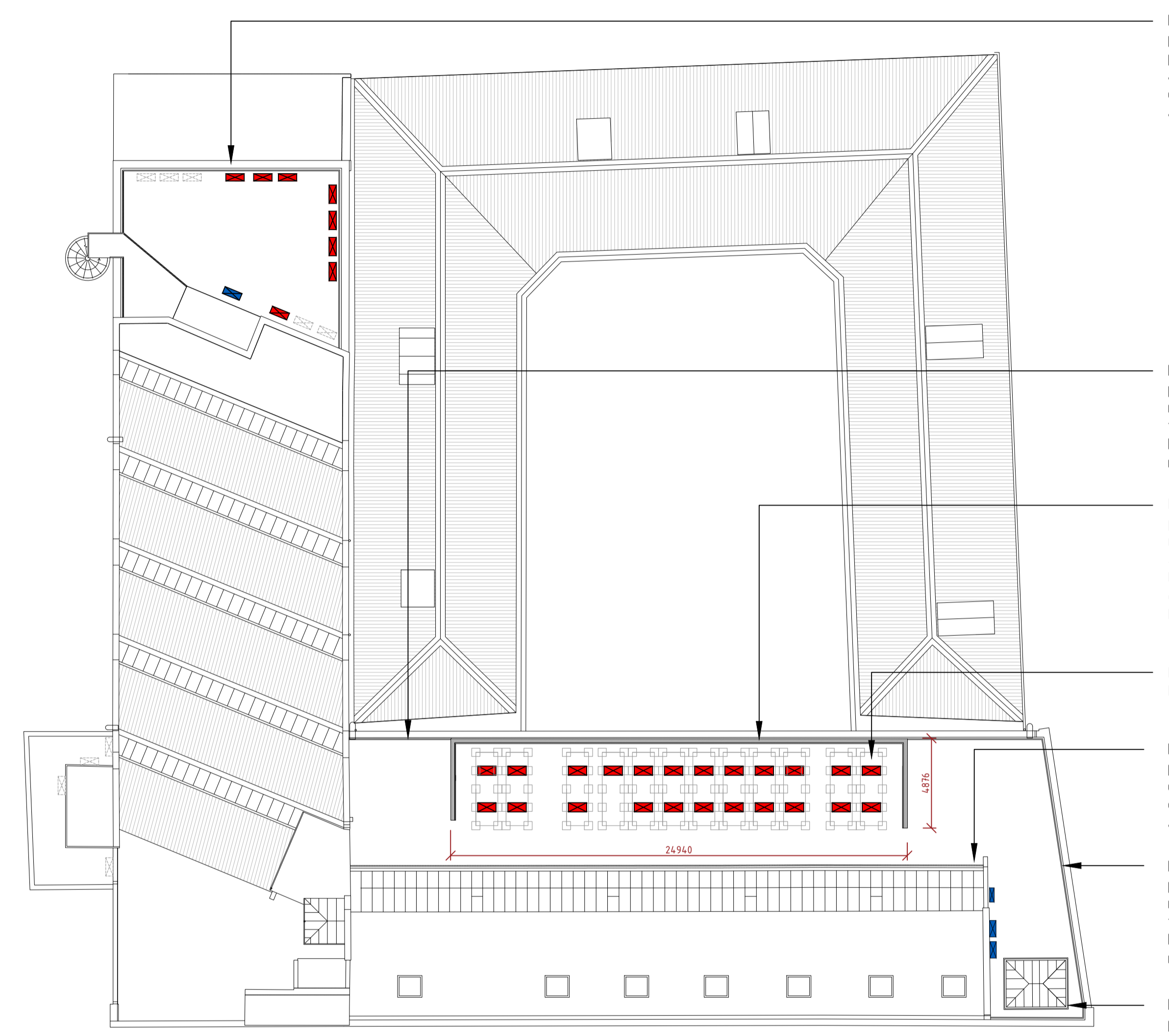
NOTE:
These drawings are to be used for planning application purposes only.

External plant units are not necessarily at ground floor level. This plan shows the locations only and should be cross referenced with elevations to determine the heights at which the units are hung and if numerous units are hung under one and other.



Existing Roof Plan

- Existing external plant units
- External plant units granted under Certificate of Lawfulness 2020/5513/P - units remaining in current location
- Elevations correspond to drawings 4583/008-013



Proposed Roof Plan

- Existing external plant units removed or moved to new rooftop plant area
- External plant units granted under Certificate of Lawfulness 2020/5513/P - units remaining in current location
- External plant units for consideration in this application
- Bigfoot support system for A/C condenser units

- New steel key clamp edge protection around roof perimeter to allow safe access to roof plant. Top edge of handrail at 1100mm above roof deck level.
- New steel key clamp edge protection to perimeter of roof allowing safe access to roof plant. Top edge of handrail at 1100mm above roof deck level.
- Horizontally louvred steel plant screen to hide new rooftop plant. Plant screen at 1800mm above roof deck level. New steel key clamp edge protection located behind screen.
- New rooftop plant and bigfoot support system.
- New steel key clamp edge protection in front of glazed rooflights. Top edge of handrail at 1100mm above roof deck level.
- New steel key clamp edge protection to perimeter of roof allowing safe access to roof plant. Top edge of handrail at 1100mm above roof deck level.
- New steel key clamp edge protection around glazed rooflight. Top edge of handrail at 1100mm above roof deck level.

Date 15/04/21	Drawn Checked	Project title Spectrum House	Drawing title Existing & Proposed External Plant - Roof Plans	Client F55 Gospel S.a.r.l	Rev A 20/04/21 Plant location revisions. B 27/04/21 Revised edge protection location. C 20/01/21 Condenser units from mews roof moved to new plant location.	 <small>01604 491227 info@waw.co.uk www.waw.co.uk</small>	Drawing No. 4583/007	A1
RICS					Scale 1:200		Rev C	
					Project Spectrum			