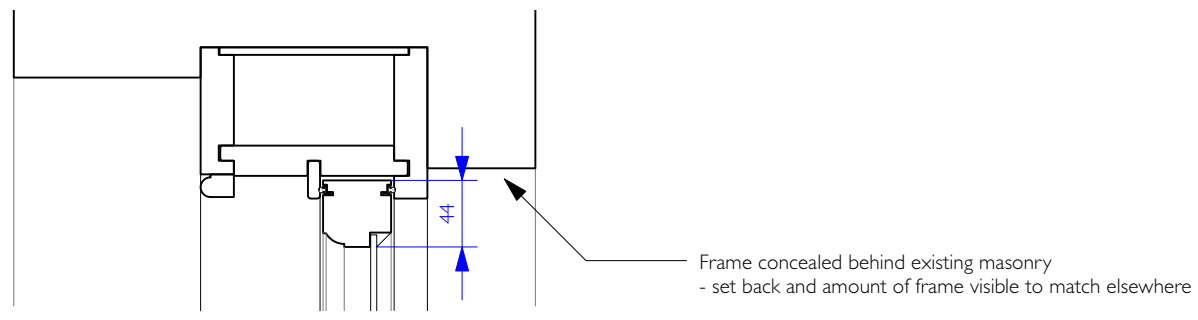
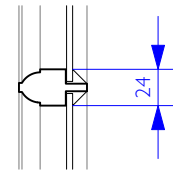


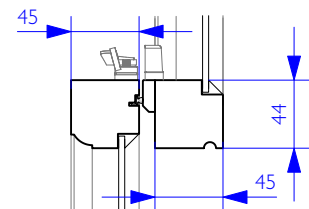
Unless otherwise noted, all dimensions are given in millimetres.
 Dimensions shall govern and must be checked on site. Do not scale off paper or digital drawings.
 Any conflicts, errors or missing information shall be brought to the attention of the document originator before progressing further. If in doubt, ask.
 All existing construction and any proposed interfaces are to be verified on site prior to construction.
 This drawing shall be read in conjunction with all associated project information & that of other consultants.
 Final design and construction are subject to detailed measured survey, statutory approvals and contractors/suppliers' requirements.
 All products and materials to be installed strictly in accordance with manufacturer's written instructions.
 This document and its design content is protected by copyright.



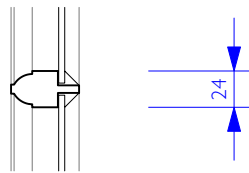
Section through timber sash head



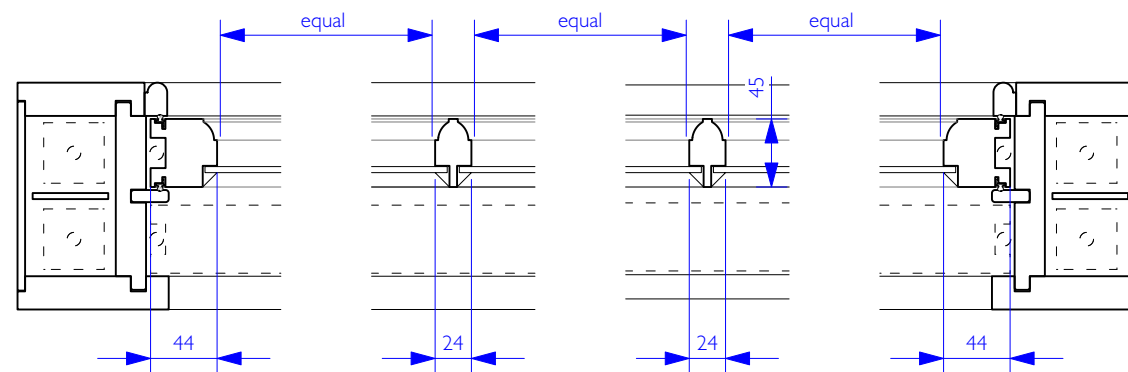
Section through timber sash moulding



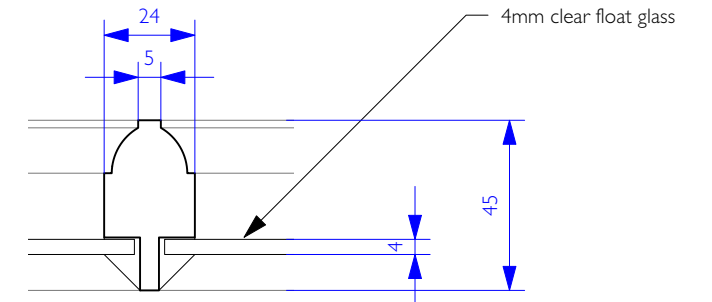
Section through timber sash meeting stile



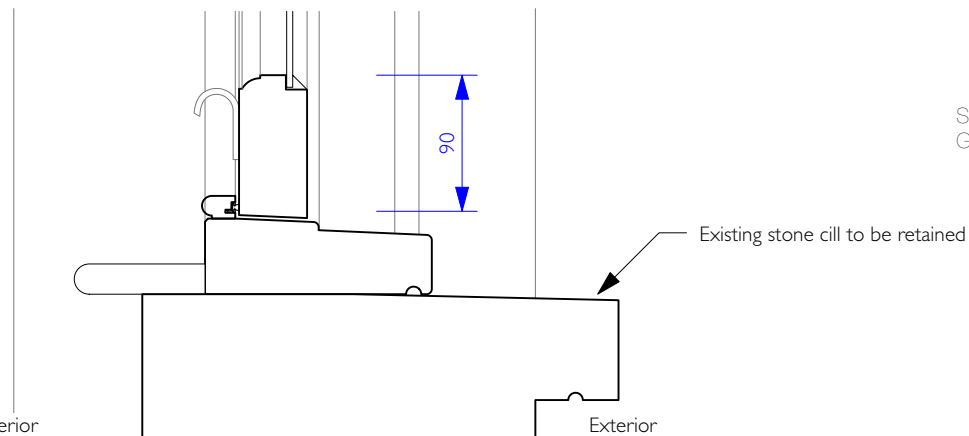
Section through timber sash moulding



D2 Sectional Plan through Timber Vertical Sliding Sash Window
 Scale: 1:5



D3 Typical Detail: Moulding Profile
 Scale: Half Actual Size

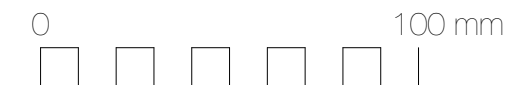


Section through timber sash cill

Sashes are to be hung on cords, operating over pulleys and counter-balanced with lead weights.
 Glazing to be traditionally sealed externally using a glazing compound.

D1 Section through Timber Vertical Sliding Sash Window
 Scale: 1:5

Proposed replacement windows are to have timber framing and glazing bar profiles to match historic windows to property.
 The proposed new windows are to replace dilapidated non-original windows.



project #	drawing #	revision #	issue date
GR002	02-002	-	19/07/22

drawing	Replacement Windows	scale	1:5 @ A3
	Typical Details	date	Jul 2022
	Proposed	by	RM

project	56 Delancey Street
	London
	N1 7RY