



Drawing No.	Rev
AGV-HBA-JKL-02-DR-A-270420	P4

Copyright Hawkins\Brown Architects
No implied licence exists. This drawing should not be used to calculate areas for the purposes of valuation. Do not scale this drawing. All dimensions to be checked on the site by the contractor and such dimensions to be their responsibility. All work must comply with relevant British Standards and Building Regulations requirements. Drawing errors and omissions to be reported to the architect. To be read in conjunction with Architect's specification and other consultant information.

Rev	Description	Date
P1	Issued for Coordination	18/06/21
P2	Issued for Coordination	14/01/22
P3	Issued for Coordination	18/02/22

Masonry support strategy in abeyance pending confirmation by HPL

GRC profiles in abeyance pending confirmation by supplier

159 St John Street
London EC1V 4QU

mail@hawkinsbrown.com
hawkinsbrown.com

Hawkins\Brown

Project
Agar Grove Phase 1c
Block JKL

Drawing
L05 - Typical Terrace Detail

Scale @ A1
1 : 5

Date
18/06/21

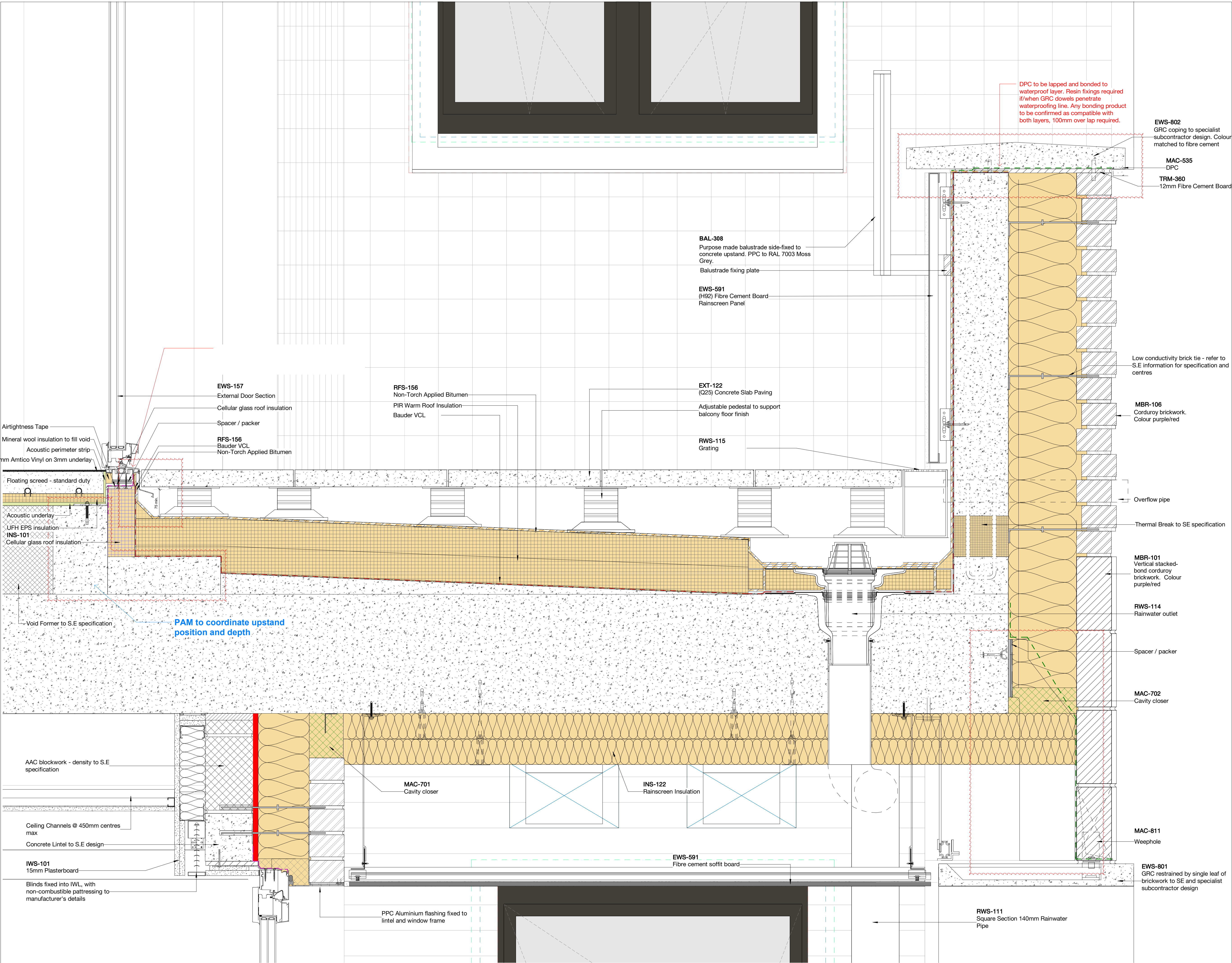
Drawn By
CM

Checked By
JW

Job Number	Status	Purpose of Issue
1423-C	S1	Coordination

Drawing No.
AGV-HBA-JKL-05-DR-A-270422

Rev
P3



JA

BAL-305
Purpose made balustrade side-fixed to concrete upstand. PPC to RAL 7003 Moss Grey.

EWS-802
GRC coping to specialist subcontractor design. Colour matched to fibre cement

MAC-535
DPC

TRM-360
12mm Fibre Cement Board

MBR-106
Corduroy brickwork. Colour grey.

Thermal Break to SE specification

Overflow pipe

MAC-535
DPC

MAC-811
Clay brick with weephole

MAC-606
Cellular Glass Cavity Tray Insulation. Anti-freeze/thaw coating to be applied to full extent of insulation as per manufacturers instructions - indicated dashed blue

Top leading edge to be mechanically fixed at 300mm centers

Bauder and MEP to coordinate to confirm size of opening

RWS-112
Aluminium hopper head

MBR-106
Clay facing brickwork. Colour grey.

RWS-111
Aluminium rainwater pipe

EWS-601
Parge Coat - Permanent airtightness line

RC upstand to SE specification and details

EWS-591
Weather resistant board mechanically face fixed to RC upstand

Q37/130A
Brown roof seed mix on substrate and drainage board. Refer to Landscape Consultants information

Protection mat

Pre-formed metal angle

Flashing to be fixed and plugged as per the manufacturer's recommendations

RFS-153
Torch Applied Bitumen

Bauder VCL

Perforated metal angle

Vegetation Barrier

Protection mat

Bauder Fillet

PIR Warm Roof Insulation

RC Concrete Slab to stuctural engineer's design

MBL-121
AAC blockwork - density to S.E specification

IWS-101
15mm Plasterboard

1 LRF Parapet - Low Point & Hopper Head Detail
1:5

JD

BAL-305
Purpose made balustrade side-fixed to concrete upstand. PPC to RAL 7003 Moss Grey.

EWS-802
GRC coping to specialist subcontractor design. Colour matched to fibre cement

MAC-535
DPC

TRM-360
12mm Fibre Cement Board

RC upstand to SE specification and details

EWS-591
Weather resistant board mechanically face fixed to RC upstand

Q37/130A
Brown roof seed mix on substrate and drainage board. Refer to Landscape Consultants information

Protection mat

Pre-formed metal angle

Flashing to be fixed and plugged as per the manufacturer's recommendations

RFS-153
Torch Applied Bitumen

PIR Warm Insulated Upstand

Bauder VCL

Vegetation Barrier

Protection mat

PIR Warm Roof Insulation

MBL-121
AAC blockwork - density to S.E specification

IWS-101
15mm Plasterboard

MBR-106
Clay facing brickwork. Colour grey.

Thermal Break to SE specification

240
depth of falls at highest point

EWS-601
Parge Coat - Permanent airtightness line

2 LRF Parapet - High Point
1:5

Copyright Hawkins\Brown Architects
No implied licence exists. This drawing should not be used to calculate areas for the purposes of valuation. Do not scale this drawing. All dimensions to be checked on the site by the contractor and such dimensions to be their responsibility. All work must comply with relevant British Standards and Building Regulations requirements. Drawing errors and omissions to be reported to the architect. To be read in conjunction with Architect's specification and other consultant information.

Rev	Description	Date
P1	Issued for Coordination	18/06/21
P2	Issued for Coordination	12/10/21
P3	Issued for Coordination	14/01/22

Masonry support strategy in abeyance pending confirmation by HPL

GRC profiles in abeyance pending confirmation by supplier

159 St John Street
London EC1V 4QU

mail@hawkinsbrown.com
hawkinsbrown.com

Hawkins\Brown

Project
Agar Grove Phase 1c
Block JKL

Drawing
Typical Roof Details - Brown
Roof Parapet

Scale @ A1
1 : 5

Date
18/06/21

Drawn By
CM

Checked By
JW

Job Number
1423-C

Status
S1

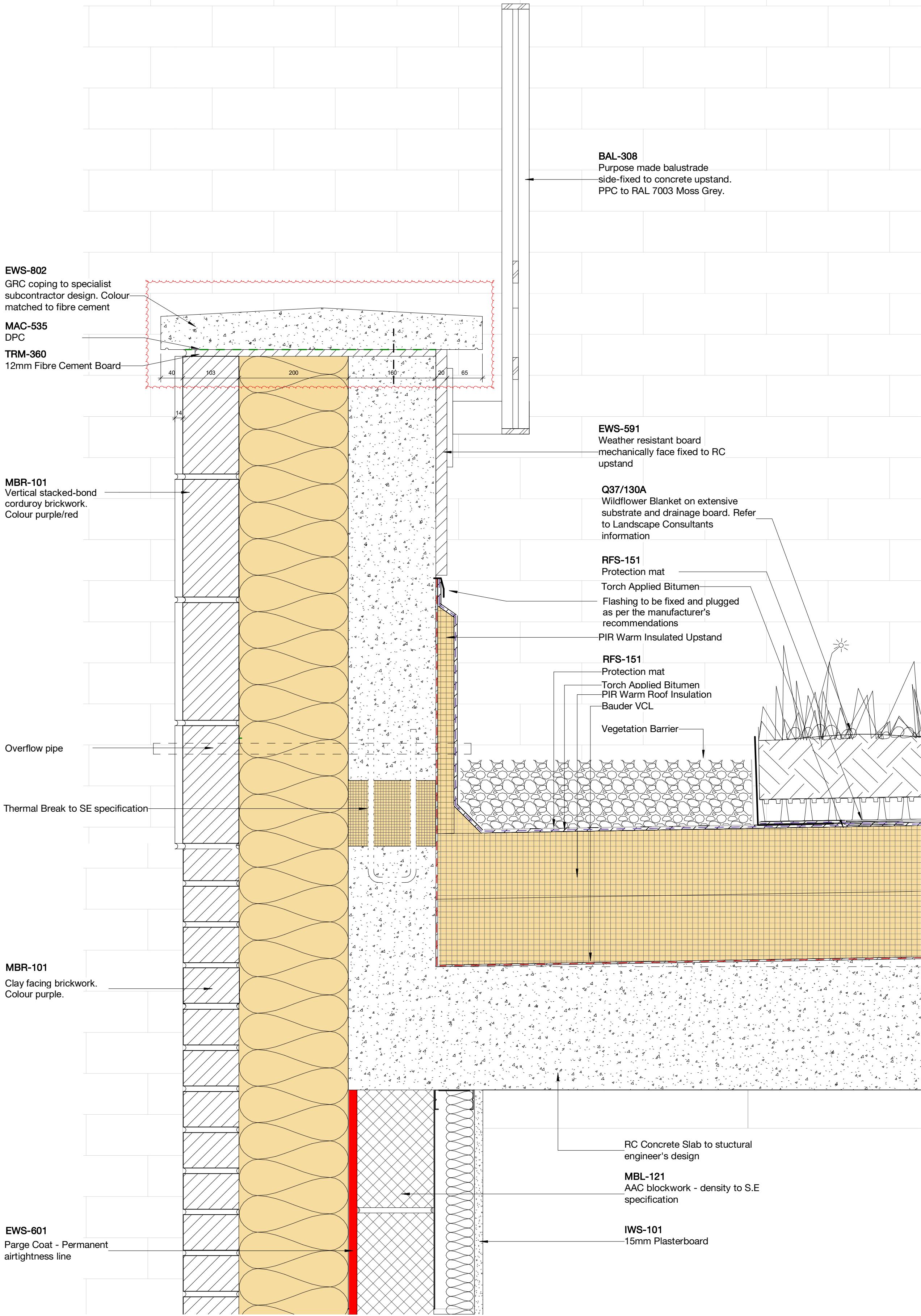
Purpose of Issue
Coordination

Drawing No.

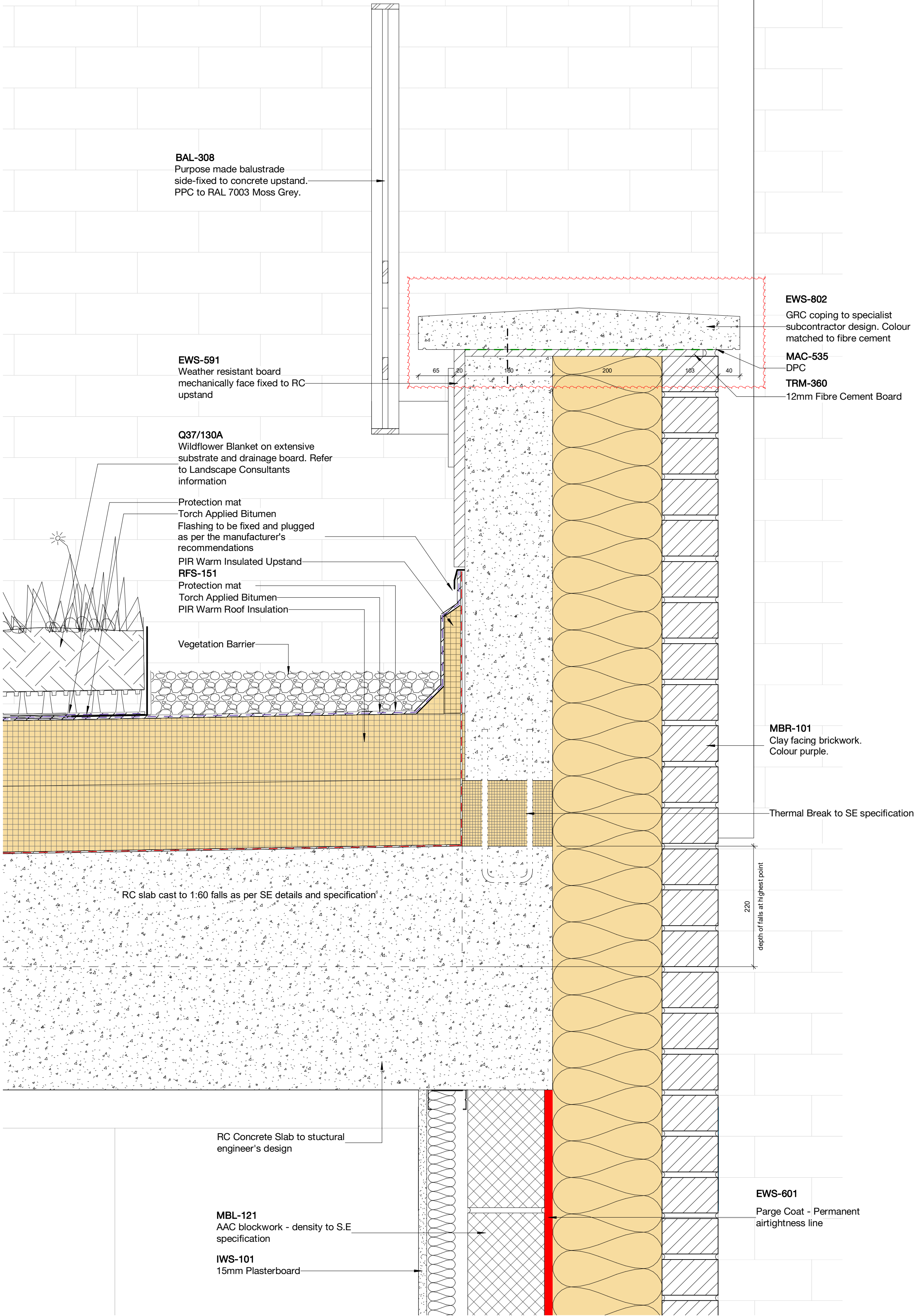
AGV-HBA-JKL-RF-DR-A-270408

Rev

P3



1 Wildflower Roof Parapet - Low Point
1:5



2 Wildflower Roof Parapet - High Point
1:5

Copyright Hawkins\Brown Architects
No implied licence exists. This drawing should not be used to calculate areas for the purposes of valuation. Do not scale this drawing. All dimensions to be checked on the site by the contractor and such dimensions to be their responsibility. All work must comply with relevant British Standards and Building Regulations requirements. Drawing errors and omissions to be reported to the architect. To be read in conjunction with Architect's specification and other consultant information.

Rev	Description	Date
P1	Issued for Coordination	18/06/21
P2	Issued for Coordination	12/10/21
P3	Issued for Coordination	14/01/22

Masonry support strategy in
abeyance pending
confirmation by HPL

GRC profiles in abeyance
pending confirmation by supplier

159 St John Street
London EC1V 4QU
mail@hawkinsbrown.com
hawkinsbrown.com

Hawkins\Brown

Project
Agar Grove Phase 1c
Block JKL

Drawing
Typical Roof Details - Wildflower
Roof Parapet

Scale @ A1
1 : 5

Date
18/06/21

Drawn By
CM

Checked By
JW

Job Number
1423-C

Status
S1

Purpose of Issue
Coordination

Drawing No.

AGV-HBA-JKL-ZZ-DR-A-270409

Rev

P3

