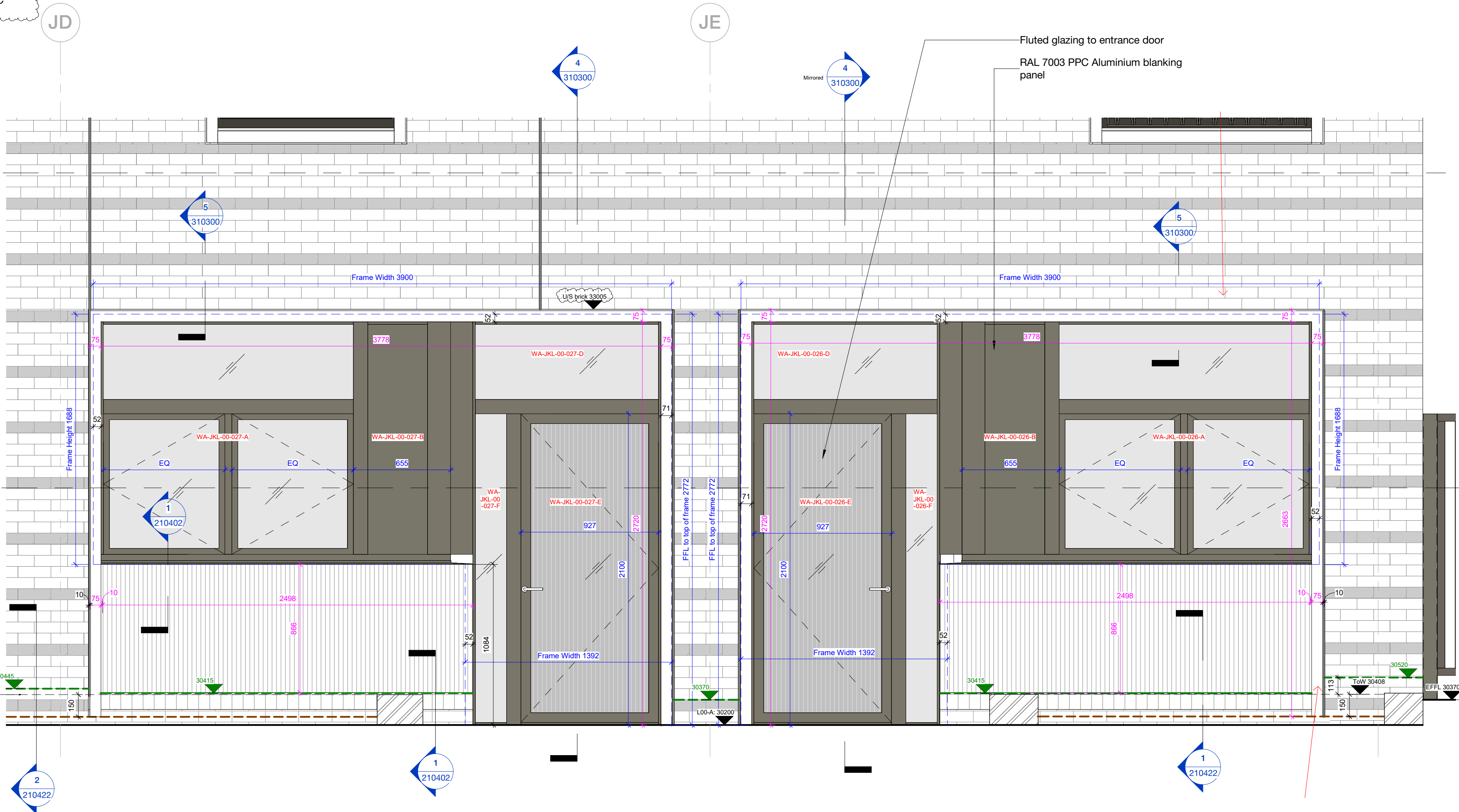
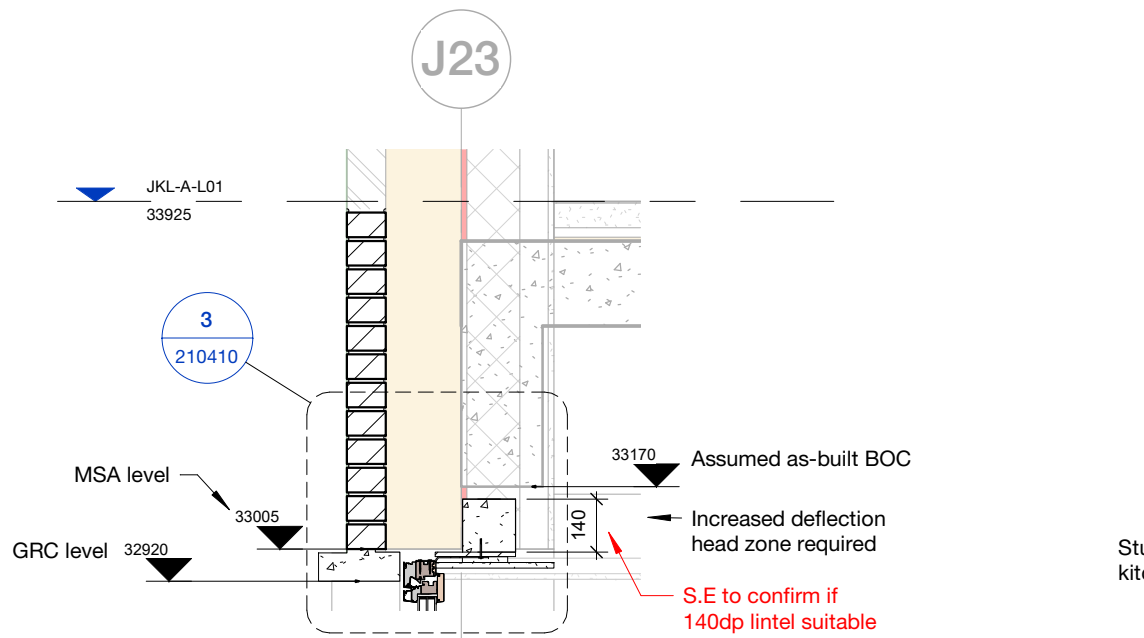


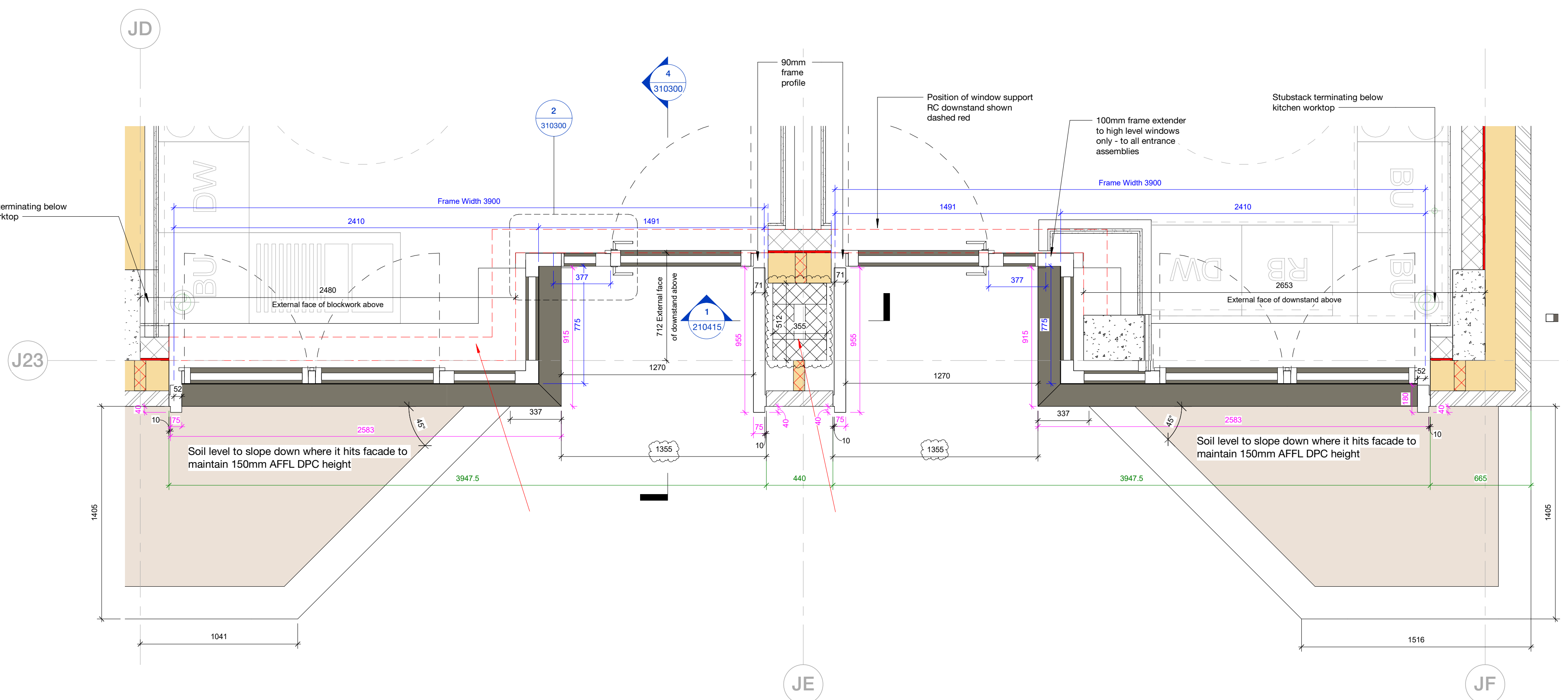
4 A-00-01 / A-00-02 Entrance Section
1:20



1 A-00-01 / A-00-02 Entrance Elevation
1:20
FFL at door thresholds shown for clarity, note levels vary at front of planter



5 Kitchen window head between JA-JF
1:20



3 A-00-01 / 02 Entrance Plan
1:20
Junctions shown indicatively only from Revit model - refer to 1:5 details for interfaces

2 Entrance Door to Window junction
1:5
Detail for all entrance assemblies

Refer to AGV-HBA-JKL-00-DR-A-210100 series for blockwork inner leaf setting out and movement joint locations

Note: S.E model shown is latest issued on Dalux (04.03.22)

Copyright Hawkins\Brown Architects
No implied licence exists. This drawing should not be used to calculate areas for the purposes of valuation. Do not scale this drawing. All dimensions to be checked on the site by the contractor and such dimensions to be their responsibility. All work must comply with relevant British Standards and Building Regulations requirements. Drawing errors and omissions to be reported to the architect. To be read in conjunction with Architect's specification and other consultant information.

Rev	Description	Date
P1	Issued for Coordination	07/05/21
P2	Annotation updated, Kitchen windows to A-00-04 widened	16/08/21
P3	Amendments as described on sheet. Sub-references added to match quote system	13/09/21
P4	Updates following change in Masonry Support strategy above recessed entrances	08/12/21
P5	DPC heights added, planter setting out amended and brick plinth/GRC panel setting out amended	07/02/22
P6	Issued for Construction. Planters hidden to show brickwork below DPC.	01/04/22
P7	Brick datum levels added	19/04/22

To be read in conjunction with:

- Window schedule: AGV-HBA-JKL-ZZ-SH-A-310001
- Window details: AGV-HBA-JKL-ZZ-DR-A-210400 Series
- Airtightness taping details: AGV-HBA-ZZ-ZZ-DR-A-210900/901
- Fire Strategy Report: AFF-20566-02-AgarGrovePhase1C_FSR_01
- Specification: AGV-HBA-ZZ-ZZ-SP-A-000.10/L25/L40/Z
- Window unit performance:**
 - Refer to AGV-HBA-JKL-ZZ-SH-A-310001 for U-Value, G-Value and Acoustic requirements
 - VLT: 70%
 - Barrier loading: BS 6180 Table 2 Class (i)
 - Impact resistance: Class 1 to BS EN 12600
 - Security: PAS24:2016 to all L00 window/doors with Class P1A laminated glass to BS EN 350:2000
 - Airtightness: Class 4 to BS EN 12207/1026
- Window operation:**
 - Windows indicated as fire egress routes on AGV-HBA-JKL-ZZ-SH-A-310001 to be fitted with non-key locking hardware and should be capable of remaining open without being held
 - Dashed opening direction lines drawn to UK convention ie. arrow pointing towards hinge side
 - Bespoke aftermarket cable restrictors to be fitted to all L00 windows. 130mm cable length on top of sash to restrict tilt function, 100mm cable length to opening side to restrict turn function.
 - Window handles to be positioned maximum of 1200mm above FFL unless otherwise noted. Remote opening device required to be retrofitted to kitchen windows if units adapted for occupiers with additional accessibility requirements
 - Entrance door handle to be positioned 950mm above FFL
- Glass selection:**
 - All pane specifications to be selected by fabricator to satisfy sizes of units and performance characteristics cited
 - Vision glazing: GLP-112 (G-value: 0.5)
 - Obscured glazing: GLP-113 (G-value TBC through sampling)
 - Opaque panel: GLP-151
 - Coatings for solar control/Low-E to be selected to satisfy performance characteristics cited
 - All glass to be safe breakage in accordance with the requirements of Approved Document K
 - All toughened glass to be heat soak tested to mitigate the risks of NIS inclusions
 - Toughened glass to not be used to outer panes on upper floors in accordance with CWC1 TN68 recommendations
 - All glass to be selected to prevent the risk of thermal stress fracture
 - All glass & frame selection to be evidenced for approval and to demonstrate Passivhaus compliance
 - Fluted glazing to entrance door. NB: Sidelight changed to vision glazing following DCCO consultation
- Dimensions:**
 - Frame height dimensions assume Purenit cill carrier piece not used due to combustibility
 - Frame dimensions are to outer frame.
 - Entrance doors to maintain 850mm clear width when measured in accordance with ADM
 - 70mm outer frame profile unless otherwise noted
 - 90mm jamb profile to entrance door jamb only - to accommodate X-hardware opening clearance.
 - Internorm threshold seal 18mm above FFL - above 15mm stated in ADM. Derogation required from Building Control.
 - 10mm tolerance between GRC profile and brickwork opening
- Installation:**
 - All units to be installed in accordance with manufacturers recommendations
 - Recessed entrance assembly fixed into concrete downstand - fixing to accommodate 15mm max deflection, 70mm head profile
 - Living room windows fixed to lintel/blockwork with standard fixing (no deflection) - 70mm head profile.
 - All fixing design by installer

159 St John Street
London EC1V 4QJ
mail@hawkinsbrown.com
hawkinsbrown.com

Hawkins\Brown

Project
Agar Grove Phase 1c
Block JKL

Drawing
L00 Front Entrances Sheet 1

Scale @ A1
As indicated

Date
May 2021

Drawn By
TC

Checked By
JW

Job Number
1423-C

Status
S4

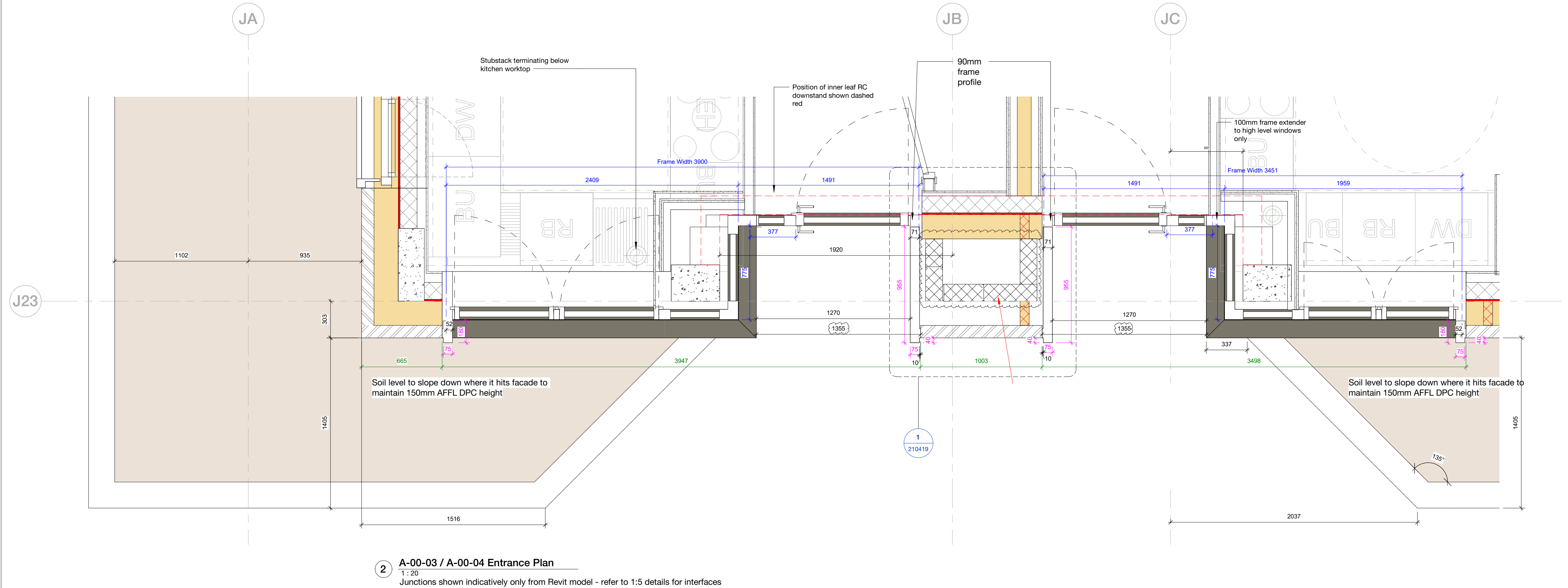
Purpose of Issue
Stage Approval

Drawing No.

AGV-HBA-JKL-00-DR-A-310300

Rev

P7



Copyright Hawkins\Brown Architects
No implied licence exists. This drawing should not be used to calculate areas for the purposes of valuation. Do not scale this drawing. All dimensions to be checked on the site by the contractor and such dimensions to be their responsibility. All work must comply with relevant British Standards and Building Regulations requirements. Drawing errors and omissions to be reported to the architect. To be read in conjunction with Architect's specification and other consultant information.

	Description	Date
	Issued for Coordination	07/05/21
2	Annotation updated. Kitchen windows to A-00-04 widened	16/08/21
	Amendments as described on sheet. Sub-references added to match quote system	13/09/21
	DPC heights added, planter setting out amended and brick plinth/GRC panel setting out amended	07/02/22
	Issued for Construction. Planters hidden to show brickwork below DPC.	01/04/22
5	Brick datum levels added	19/04/22

To be read in conjunction with:

- Window schedule: AGV-HBA-JKL-ZZ-SH-A-310001
- Window details: AGV-HBA-JKL-ZZ-SH-A-210400 Series A
- Airtightness tapping details: AGV-HBA-JKL-ZZ-DR-A-210900-901
- Fire Strategy Report: AFR-20566-02-AgeGrovePhase1_C_FSR_01
- Specification: AGV-HBA-JKL-ZZ-SH-A-310001/01/25/LA/02

Window unit

- Refer to AGV-HBA-JKL-ZZ-SH-A-310001 for L-Value, G-Value and Acoustic requirements
- ULT: 70%
- Barrier loading: BS 8180 Table 2 Class (i)
- Impact resistance: Class 1 to BS EN 12600
- Security: PAS24:2016 to all 100 window/doors with Class P1A
- Air-tightness: Class BS EN 12200
- Wind-tightness: Class 4 to BS EN 12207/1026

Window operation:

- Windows indicated as fire egress routes on AGV-HBA-JKL-ZZ-SH-A-310001 to be fitted with non-key locking hardware and should be capable of remaining open without being held
- Dashed opening direction lines drawn UK convention i.e. arrow pointing towards hinge side
- Bottleneck door handle/cable restrictors to be fitted to all L00 windows
- 130mm cable running on top of shaft to restrict tilt function, 100mm cable length to opening side to restrict turn function.
- Window handles to be positioned a maximum of 1200mm above FFL unless otherwise noted
- Retained opening device required to be retrofitted to kitchen windows if units adapted for耦pers with additional accessibility requirements
- Entrance door handle to be positioned 950mm above FFL

Glass selection:

- All pane specifications to be selected by fabricator to satisfy sizes of units and performance characteristics cited
- Vision glazing: GLP-112 (G-Value TBC through sampling)
- Obscured glazing: GLP-113 (G-Value TBC through sampling)
- Opaque panel: GLP-151
- Coatings for solar control/Low-E to be selected to satisfy performance characteristics cited
- All glass to be self-cleaning in accordance with the requirements of Approved Document K
- All toughened glass to be heat soaked tested to mitigate the risks of NSI inclusions
- Toughened glass to not be used to other room partitions on upper floors in accordance with CWCT T166 recommendations
- All glass to be fitted with non-key locking hardware to resist stress fracture
- All glass & frame selection to be referenced for approval and to demonstrate Passivhaus compliance
- Flushed glazing to entrance door. NB: Sideglight changing to vision glazing following DOCO consultation

Dimensions:

- Frame height dimensions assume Purcell cill carrier piece not used due to combustibility
- Frame dimensions are to outer frame
- Entrance doors to maintain 850mm clear width when measured in accordance with ADM
- 70mm outer frame profile unless otherwise noted
- 30mm jamb bump profile to entrance door jamb only - to accommodate X-hardware opening clearance
- Intergroove threshold seal 18mm above FFL - above 15mm staged in accordance with ADM
- 30mm outer frame profile on window building control
- 10mm tolerance between GRC profile and brickwork opening

Installation:

- All units to be fitted in accordance with manufacturers recommendations
- Recessed entrance assembly fitted into concrete down-draft - fixing to accommodate 15mm max deflection, 70mm head profile
- Living room windows fixed to lintel/blockwork with standard fixing (no cast in situ)
- 70mm head profile
- All fixing done by installer

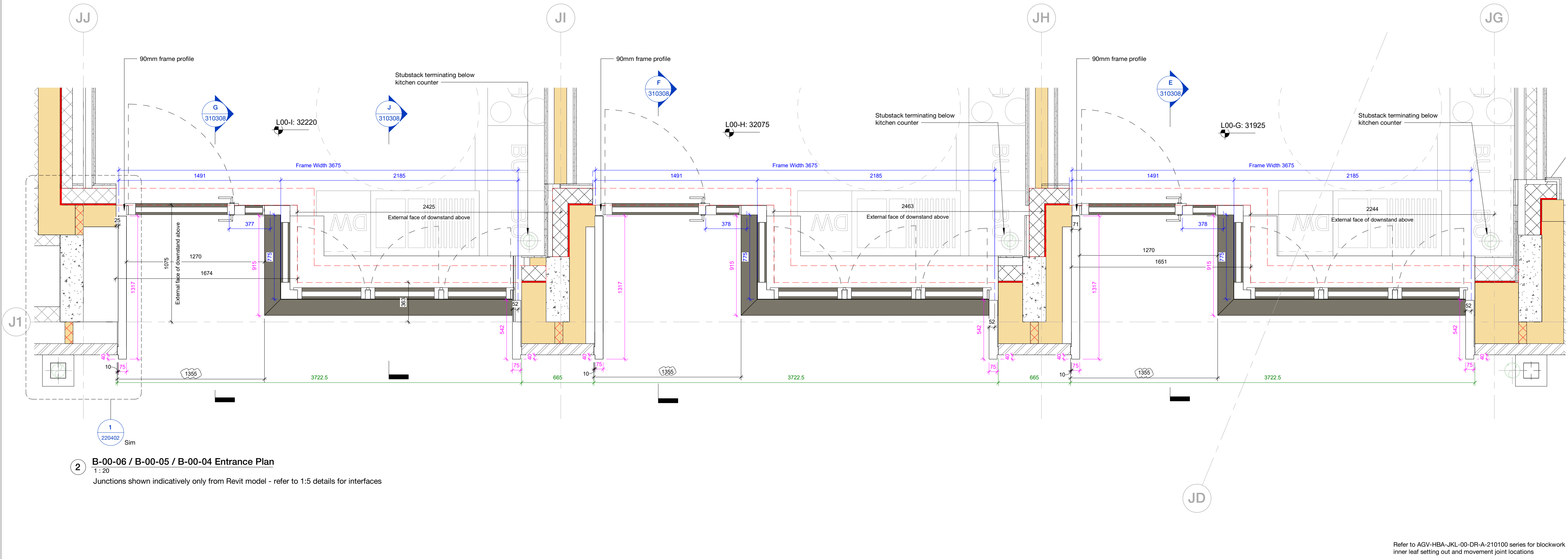
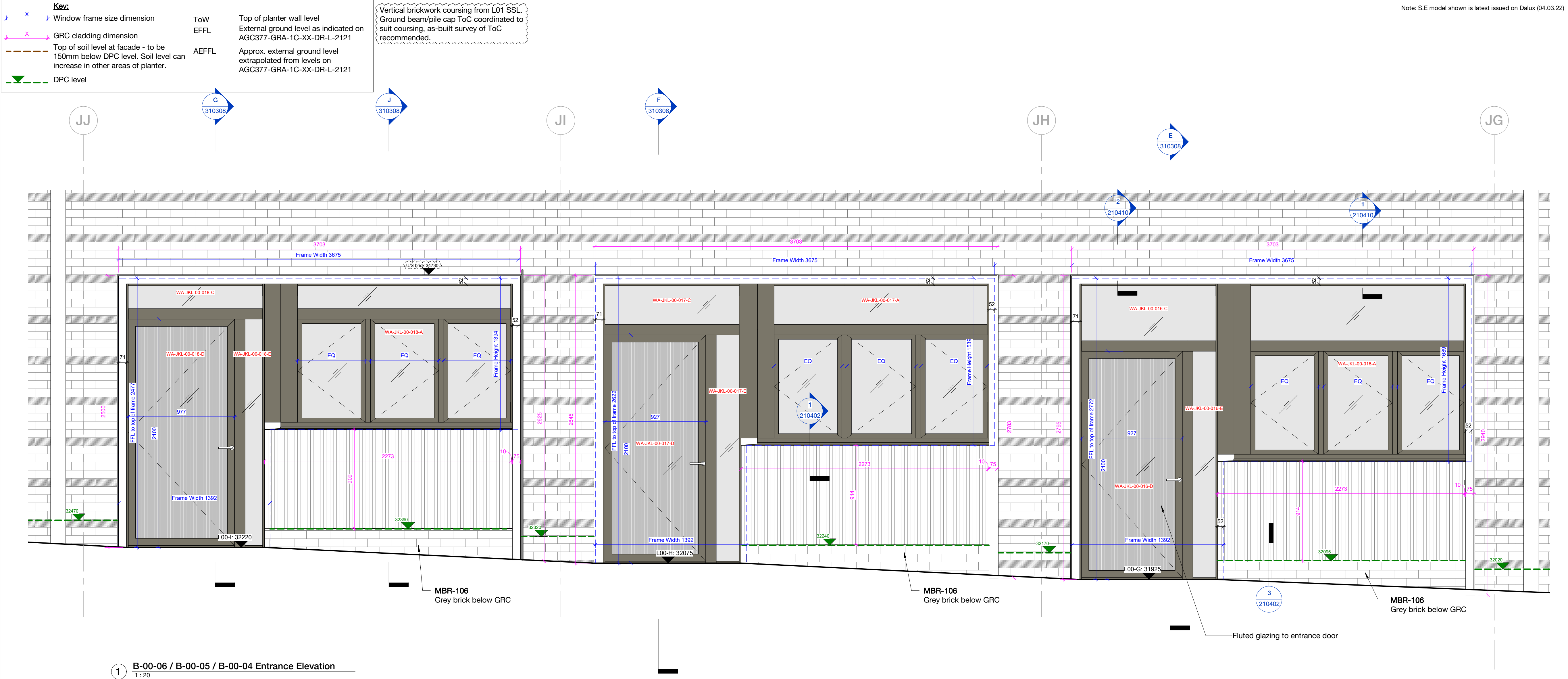
159 St John Street
London EC1V 4QJ
mail@hawkinsbrown.com
hawkinsbrown.com

Hawkins\Brown

Project
Agar Grove Phase 1c
Block JKL

Drawing
L00 Front Entrances Sheet 2

Scale @ A1 As indicated		Date May 2021
Drawn By TC		Checked By JW
Job Number 1423-C	Status S4	Purpose of Issue Stage Approval
Drawing No. AGV-HBA-JKL-00-DR-A-310301		Rev P6



Copyright Hawkins\Brown Architects
No implied licence exists. This drawing should not be used to calculate areas for the purposes of valuation. Do not scale this drawing. All dimensions to be checked on the site by the contractor and such dimensions to be their responsibility. All work must comply with relevant British Standards and Building Regulations requirements. Drawing errors and omissions to be reported to the architect. To be read in conjunction with Architect's specification and other consultant information.

Rev	Description	Date
P1	Issued for Coordination	07/05/21
P2	Annotation updated, Kitchen windows to A-00-04 widened	16/08/21
P3	Amendments as described on sheet. Sub-references added to match quote system	13/09/21
P4	DPC heights added, planter setting out amended and brick plinth/GRC panel setting out amended	07/02/22
P5	Issued for Construction. Planters hidden to show brickwork below DPC.	01/04/22
P6	Brick datum levels added	19/04/22

To be read in conjunction with:
Window schedule: AGV-HBA-JKL-ZZ-SH-A-310001
Window details: AGV-HBA-JKL-ZZ-DR-A-210400 Series
Airtightness taping details: AGV-HBA-ZZ-ZZ-DR-A-210800/901
Fire Strategy Report: AFF-20566-02-AgarGrovePhase1C, FSR_D1
Specification: AGV-HBA-ZZ-ZZ-SP-A-000L10/L25/L40/Z

Window unit performance:
-Refer to AGV-HBA-JKL-ZZ-SH-A-310001 for U-Value, G-Value and Acoustic requirements
-VLT: 70%
-Barrier loading: BS 6180 Table 2 Class (i)
-Impact resistance Class 1 to BS EN 12600
-Security: PAS24:2016 to all L00 window/doors with Class P1A laminated glass to BS EN 350:2000
-Airtightness: Class 4 to BS EN 12207/1026

Window operation:
-Windows indicated as fire egress routes on AGV-HBA-JKL-ZZ-SH-A-310001 to be fitted with non-key locking hardware and should be capable of remaining open without being held
-Dashed opening direction lines drawn to UK convention ie. arrow pointing towards hinge side
-Bespoke aftermarket cable restrictors to be fitted to all L00 windows. 130mm cable length on top of sash to restrict tilt function, 100mm cable length to opening side to restrict turn function.
-Window handles to be positioned maximum of 1200mm above FFL unless otherwise noted. Remote opening device required to be retrofitted to kitchen windows if units adapted for occupiers with additional accessibility requirements
-Entrance door handle to be positioned 950mm above FFL

Glass selection:
-All pane specifications to be selected by fabricator to satisfy sizes of units and performance characteristics cited
-Vision glazing: GLP-112 (G-value: 0.5)
-Obscured glazing: GLP-113 (G-value TBC through sampling)
-Opaque panel: GLP-151
-Coatings for solar control/Low-E to be selected to satisfy performance characteristics cited
-All glass to be safe breakage in accordance with the requirements of Approved Document K
-All toughened glass to be heat soak tested to mitigate the risks of NIS inclusions
-Toughened glass to not be used to outer panes on upper floors in accordance with CWCT TN68 recommendations
-All glass to be selected to prevent the risk of thermal stress fracture
-All glass & frame selection to be evidenced for approval and to demonstrate Passivhaus compliance
-Fluted glazing to entrance door. NB: Sidelight changed to vision glazing following DOCCO consultation

Dimensions:
-Frame height dimensions assume Purenit cill carrier piece not used due to combustibility
-Frame dimensions are to outer frame
-Entrance doors to maintain 850mm clear width when measured in accordance with ADM
-70mm outer frame profile unless otherwise noted
-90mm jamb profile to entrance door jamb only - to accommodate X-hardware opening clearance
-Internorm threshold seal 18mm above FFL - above 15mm stated in ADM. Derogation required from Building Control.
-10mm tolerance between GRC profile and brickwork opening

Installation:
-All units to be installed in accordance with manufacturers recommendations
-Recessed entrance assembly fixed into concrete downstand - fixing to accommodate 15mm max deflection, 70mm head profile
-Living room windows fixed to lintel/blockwork with standard fixing (no deflection) - 70mm head profile.
-All fixing design by installer

159 St John Street
London EC1V 4QJ
mail@hawkinsbrown.com
hawkinsbrown.com

Hawkins\Brown

Project
Agar Grove Phase 1c
Block JKL

Drawing
L00 Front Entrances Sheet 6

Scale @ A1
As indicated

Date
May 2021

Drawn By
TC

Checked By
JW

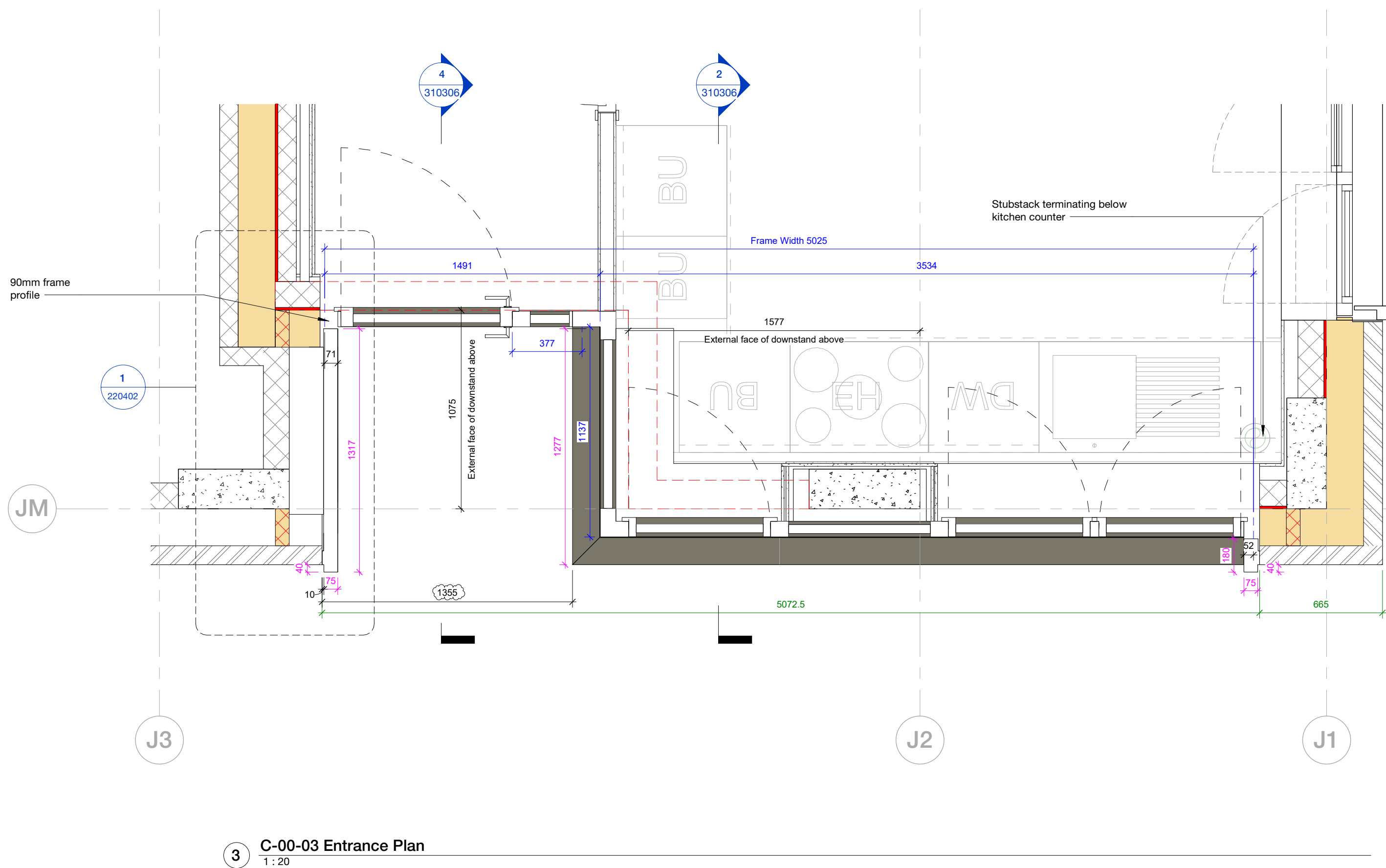
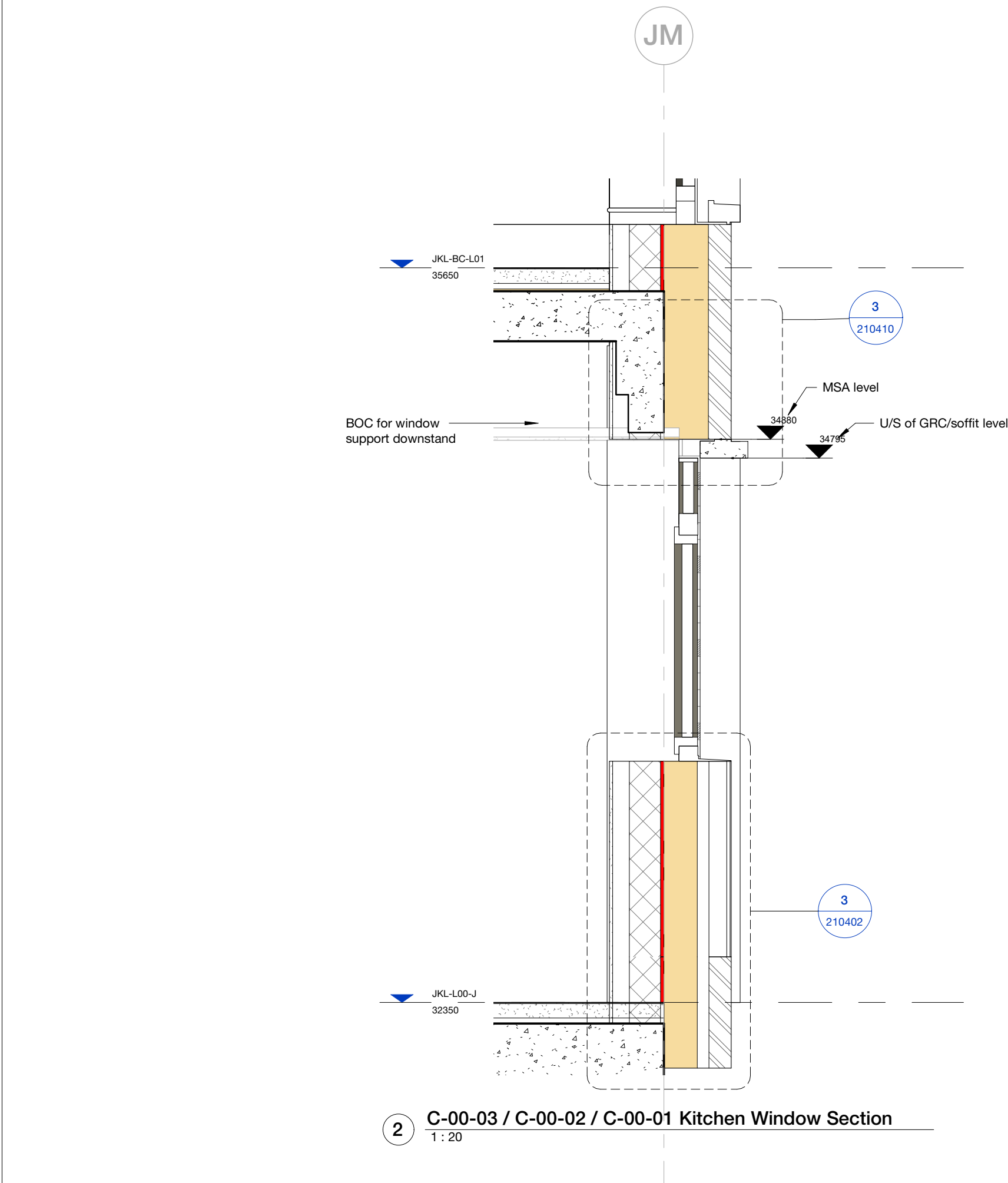
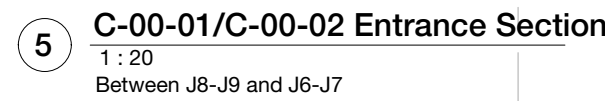
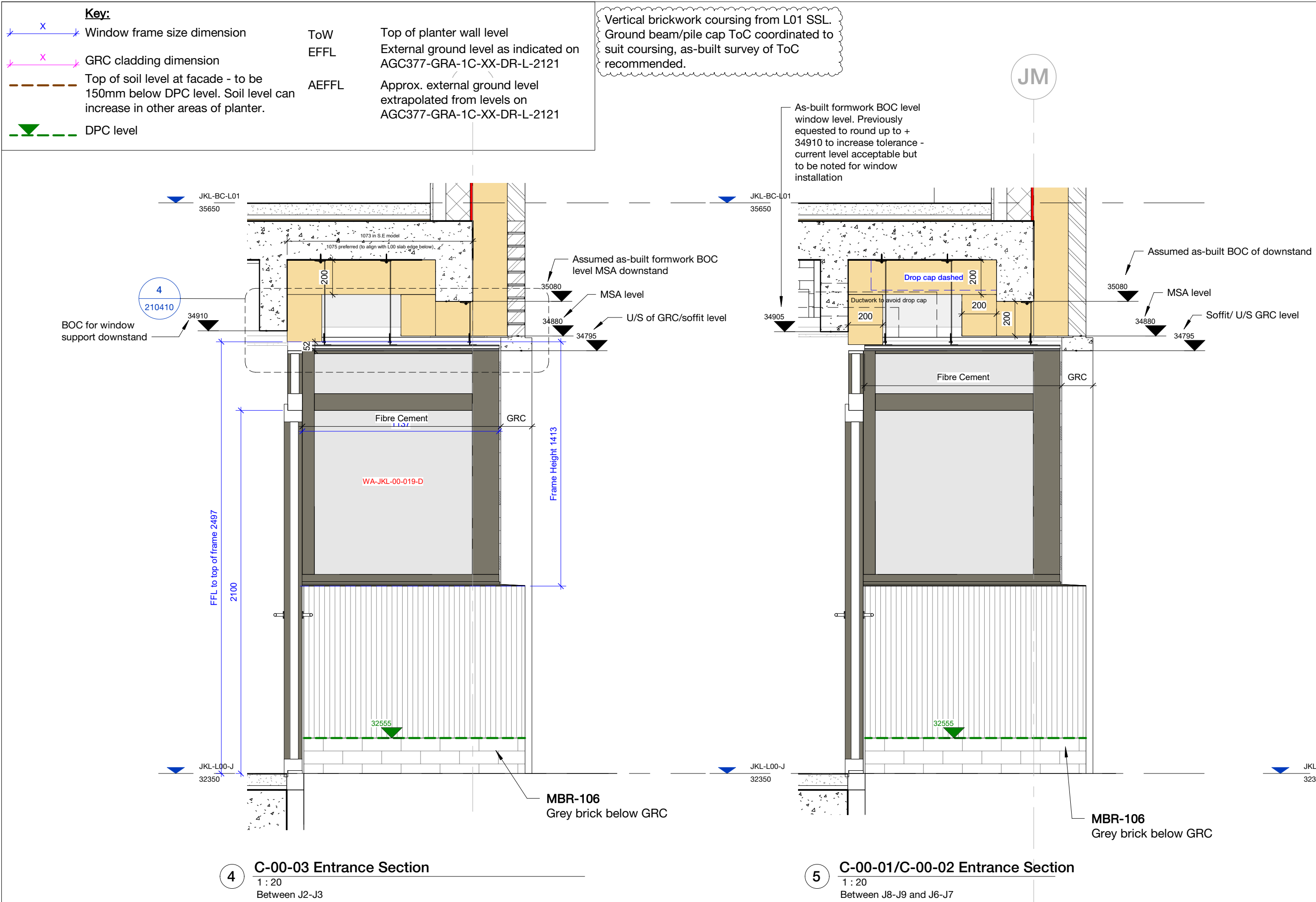
Job Number
1423-C

Status
S4

Purpose of Issue
Stage Approval

Drawing No.
AGV-HBA-JKL-00-DR-A-310305

Rev
P6



Copyright Hawkins/Brown Architects
No implied licence exists. This drawing should not be used to calculate areas for the purposes of valuation. Do not scale this drawing. All dimensions to be checked on the site by the contractor and such dimensions to be their responsibility. All work must comply with relevant British Standards and Building Regulations requirements. Drawing errors and omissions to be reported to the architect. To be read in conjunction with Architect's specification and other consultant information.

Rev	Description	Date
*1	Issued for Coordination	07/05/21
*2	Amendment added. Kitchen windows to A-00-04 widened	16/08/21
*3	Annotations as described on sheet. Sub-references added to match quote system	13/09/21
*4	Updates following change in Masonry Support strategy updates to suit as-built downstand levels	08/12/12
*5	DPC heights added, planter setting out amended and brick/plint/GRC panel setting out amended	09/12/12
*6		07/02/22
*7	Issued for Construction. Planters hidden to show brickwork below DPC.	01/04/22
*8	Brick datum levels added	19/04/22

To be read in conjunction with:
 Window schedule: AGV-HBA-JKL-ZZ-SH-A-310001
 Window details: AGV-HBA-JKL-ZZ-DR-A-210400 Series
 Airtightness taping details: AGV-HBA-ZZ-ZZ-DR-A-210900/901
 Fire Strategy Report: AFF-20566-02-AgarGrovePhase1_C_FSR_01
 Specification: AGV-HBA-ZZ-ZZ-SP-A-000L10/L25/L40/Z

- Window unit performance:**
 - Refer to AGV-HA-JKL-ZJL-ZH-SA-3100001 for U-Value, G-Value and Acoustic requirements
 - VLT: 70%
 - Barrier loading: BS 6180 Table 2 Class (ii)
 - Impact resistance: BS 11 and BS EN 12608
 - Security: PAS24:2012 to all L0 window doors with Class P1A laminated glass to BS 5850
 - Air-tightness: Class 4 to BS EN 12207/1026
- Window operation:**
 - Windows indicated as fire egress routes on AGV-HA-JKL-ZJL-ZH-SA-3100001 fitted with non-key locking hardware and should be capable of remaining open without being held
 - Dashed opening direction lines drawn to UK convention ie. arrow pointing towards hinge side
 - Bespoke aftermarket cable restrictors to be fitted to all L0 windows. Restrictors to be fitted to the top of each restrict tilt function, 100mm cable length to opening side to restrict turn function.
 - Window handles to be positioned maximum of 1200mm above FFL unless otherwise noted. Remote opening device required to be fitted to all windows. Remote opening device to be adapted for occupants with additional accessibility requirements
 - Entrance door handle to be positioned 950mm above FFL

- **Glass selection:**
 - All panel specifications to be selected by fabricator to satisfy sizes of units and performance characteristics cited
 - Vision glazing: GLP-112 (G-value: 0.5)
 - Obscured glazing: GLP-113 (G-value TBC through sampling)
 - Opaque panel: GLP-151
 - Coatings for solar control Low-E to be selected to satisfy performance characteristics cited
 - All glass to be safe breakage in accordance with the requirements of Approved Document K
 - All toughened glass to be heat soaked (tested to mitigate the risks of NIS inclusion)
 - Toughened glass to not be used to outer panes on upper floors in accordance with CWCT T968 recommendations
 - All glass to be selected to prevent the risk of thermal stress fracture
 - All glass & frame selected to be evidenced for approval and to demonstrate Passivhaus compliance
 - Fluted glazing to enhance door. NB: Side/lighting change vision glazing following DCO consultation
- **Dimensions:**
 - Frame height dimensions assume Parenti cell carrier piece not used due to combustibility
 - Frame dimensions are to outer frame
 - Entrance doors to maintain 850mm clear width when measured in accordance with ADM
 - 70mm outer frame profile unless otherwise noted
 - 90mm jamb profile to entrance door above JFL - to accommodate X-hardware opening clearance.
 - 100mm outer frame profile above JFL - above 15mm standard in ADM. Derogation required from Building Control.
 - 10mm tolerance between GRC profile and brickwork opening
- **Installation:**
 - All units to be installed in accordance with manufacturers recommendations
 - Recessed entrance assembly fixed into concrete downstand - fixing to accommodate 15mm max deflection, 70mm head profile
 - Living room windows fixed to lintel/blockwork with standard fixing (no weatherflashes) - 70mm head profile.
 - All fixing design by installer

159 St John Street
London EC1V 4QJ
mail@hawkinsbrown.com
hawkinsbrown.com

Hawkins\Brown

Project
Agar Grove Phase 1c
Block JKL

Drawing

L00 Front Entrances Sheet 7

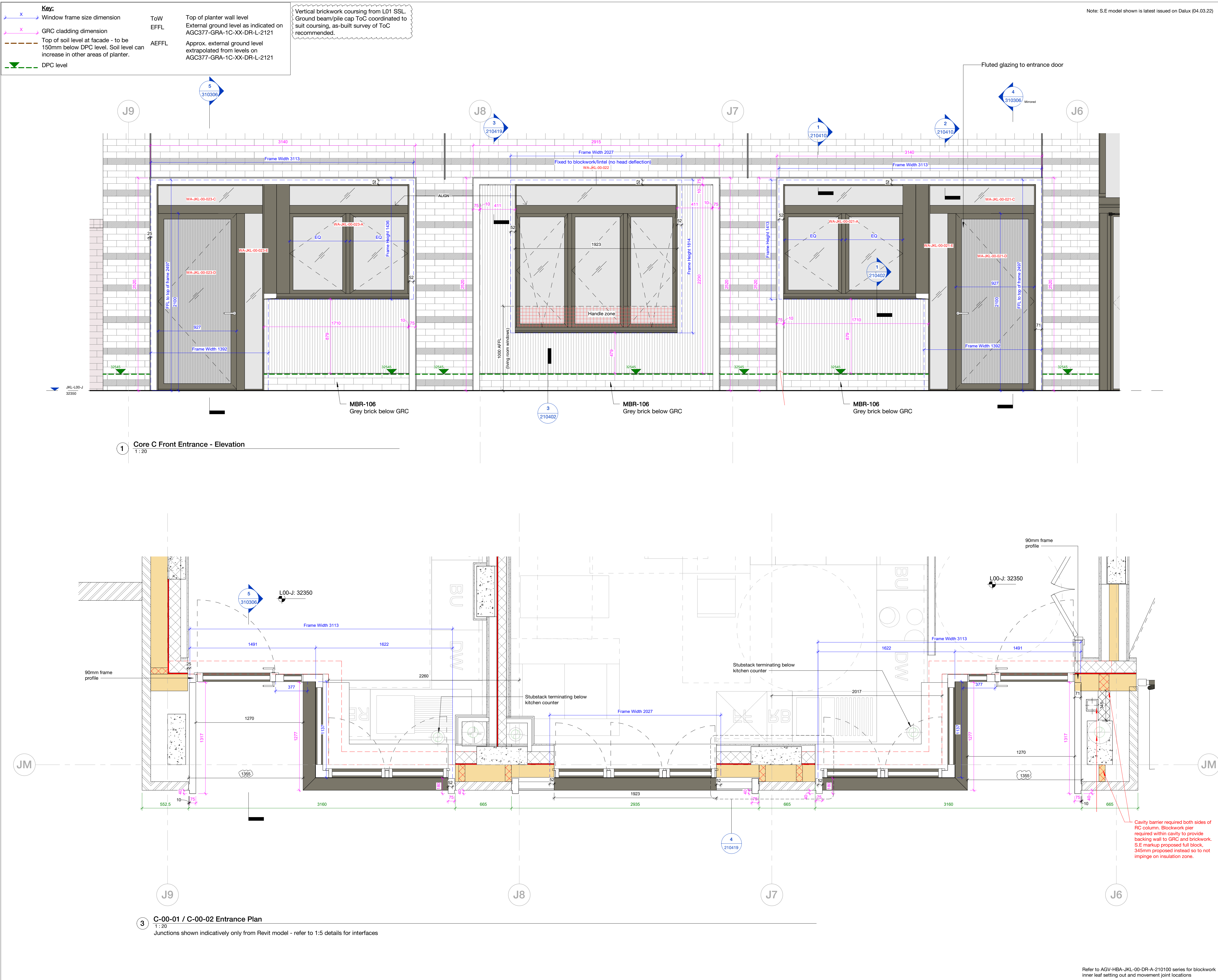
Scale @ A1 As indicated	Date May 2021
----------------------------	------------------

Drawn By	Checked By
TC	JW

Job Number	Status	Purpose of Issue
1423-C	S4	Stage Approval

Drawing No. AGV-HBA-JKL-00-DR-A-310306 Rev. P8

Refer to AGV-HBA-JKL-00-DR-A-210100 series for blockwork inner leaf setting out and movement joint locations



Copyright Hawkins\Brown Architects
No implied licence exists. This drawing should not be used to calculate areas for the purposes of valuation. Do not scale this drawing. All dimensions to be checked on the site by the contractor and such dimensions to be their responsibility. All work must comply with relevant British Standards and Building Regulations requirements. Drawing errors and omissions to be reported to the architect. To be read in conjunction with Architect's specification and other consultant information.

Rev	Description	Date
P1	Issued for Coordination	07/05/21
P2	Annotation updated. Kitchen windows to A-00-04 widened	16/08/21
P3	Amendments as described on sheet. Sub-references added to match quote system	13/09/21
P4	DPC heights added, planter setting out amended and brick plinth/GRC panel setting out amended	07/02/22
P5	Issued for Construction. Planters hidden to show brickwork below DPC.	01/04/22
P6	Brick datum levels added	19/04/22

To be read in conjunction with:

- Window schedule: AGV-HBA-JKL-ZZ-SH-A-310001
- Window details: AGV-HBA-JKL-ZZ-DR-A-210400 Series
- Airtightness taping details: AGV-HBA-ZZ-ZZ-DR-A-210900/901
- Fire Strategy Report: AFF-20566-02-AgarGrovePhase1C_FSR_01
- Specification: AGV-HBA-ZZ-ZZ-SP-A-000L10/L25/L40/Z

Window unit performance:

- Refer to AGV-HBA-JKL-ZZ-SH-A-310001 for U-Value, G-Value and Acoustic requirements
- VLT: 70%
- Barrier loading: BS 6180 Table 2 Class (i)
- Impact resistance: Class 1 to BS EN 12600
- Security: PAS24:2016 to all L00 window/doors with Class P1A laminated glass to BS EN 350:2000
- Airtightness: Class 4 to BS EN 12207/1026

Window operation:

- Windows indicated as fire egress routes on AGV-HBA-JKL-ZZ-SH-A-310001 to be fitted with non-key locking hardware and should be capable of remaining open without being held
- Dashed opening direction lines drawn to UK convention ie. arrow pointing towards hinge side
- Bespoke aftermarket cable restrictors to be fitted to all L00 windows. 130mm cable length on top of sash to restrict tilt function, 100mm cable length to opening side to restrict turn function.
- Window handles to be positioned maximum of 1200mm above FFL unless otherwise noted. Remote opening device required to be retrofitted to kitchen windows if units adapted for occupiers with additional accessibility requirements
- Entrance door handle to be positioned 950mm above FFL

Glass selection:

- All pane specifications to be selected by fabricator to satisfy sizes of units and performance characteristics cited
- Vision glazing: GLP-112 (G-value: 0.5)
- Obscured glazing: GLP-113 (G-value TBC through sampling)
- Opaque panel: GLP-151
- Coatings for solar control/Low-E to be selected to satisfy performance characteristics cited
- All glass to be safe breakage in accordance with the requirements of Approved Document K
- All toughened glass to be heat soak tested to mitigate the risks of NIS inclusions
- Toughened glass to not be used to outer panes on upper floors in accordance with CWCT TM68 recommendations
- All glass to be selected to prevent the risk of thermal stress fracture
- All glass & frame selection to be evidenced for approval and to demonstrate Passivhaus compliance
- Fluted glazing to entrance door. NB: Sidelight changed to vision glazing following DCCO consultation

Dimensions:

- Frame height dimensions assume Purenit cill carrier piece not used due to combustibility
- Frame dimensions are to outer frame.
- Entrance doors to maintain 850mm clear width when measured in accordance with ADM
- 70mm outer frame profile unless otherwise noted
- 90mm jamb profile to entrance door jamb only - to accommodate X-hardware opening clearance.
- Internorm threshold seal 18mm above FFL - above 15mm stated in ADM. Derogation required from Building Control.
- 10mm tolerance between GRC profile and brickwork opening

Installation:

- All units to be installed in accordance with manufacturers recommendations
- Recessed entrance assembly fixed into concrete downstand - fixing to accommodate 15mm max deflection. 70mm head profile
- Living room windows fixed to lintel/blockwork with standard fixing (no deflection) - 70mm head profile.
- All fixing design by installer

159 St John Street
London EC1V 4QJ

mail@hawkinsbrown.com
hawkinsbrown.com

Hawkins\Brown

Project
Agar Grove Phase 1c
Block JKL

Drawing
L00 Front Entrances Sheet 8

Scale @ A1 As indicated		Date May 2021
Drawn By TC		Checked By JW
Job Number 1423-C	Status S4	Purpose of Issue Stage Approval
Drawing No. AGV-HBA-JKL-00-DR-A-310307		Rev P6

Copyright Hawkins/Brown Architects
No implied licence exists. This drawing should not be used to calculate areas for the purposes of valuation. Do not scale this drawing. All dimensions to be checked on the site by the contractor and such dimensions to be their responsibility. All work must comply with relevant British Standards and Building Regulations requirements. Drawing errors and omissions to be reported to the architect. To be read in conjunction with Architect's specification and other consultant information.

Items annotated in red are in design development and require input from Contractor, Design Team, Subcontractor, Statutory Authority and/or Warranty Provider.

Parge Coat - nom. 15mm

DPM

DPC

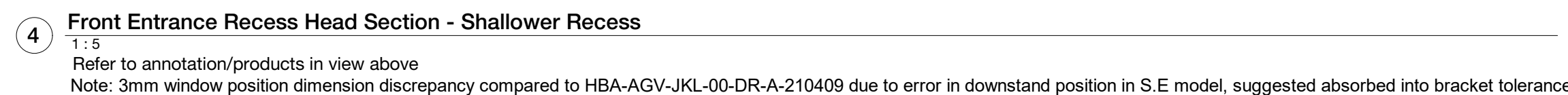
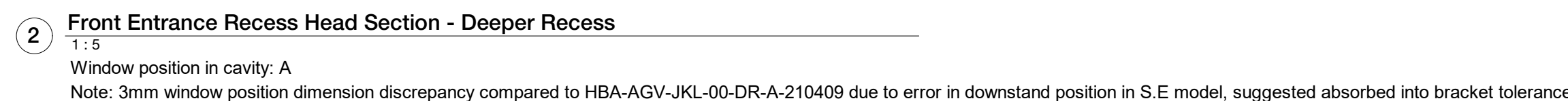
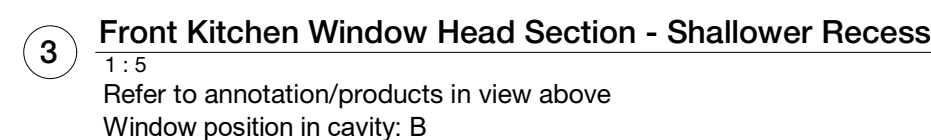
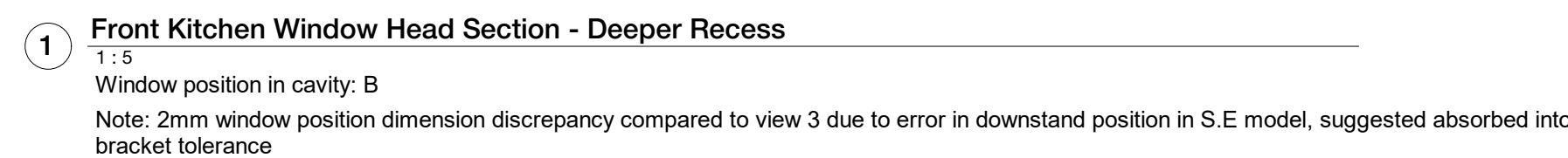
EPDM

159 St John Street
London EC1V 4QJ
mail@hawkinsbrown.com
hawkinsbrown.com

Hawkins\Brown

Drawing
Ground Floor Private Entrances -
Section Details

Drawing No.	Rev
AGV-HBA-JKL-ZZ-DR-A-210410	P2



Refer to AGV-HBA-JKL-00-DR-A-210423 for typical specification references.
Refer to AGV-HBA-JKL-00-DR-A-310300 Series for front entrance setting out.
Cavity barrier positions to be confirmed with Building Control Officer

Copyright Hawkins\Brown Architects
No implied licence exists. This drawing should not be used to calculate areas for the purposes of valuation. Do not scale this drawing. All dimensions to be checked on the site by the contractor and such dimensions to be their responsibility. All work must comply with relevant British Standards and Building Regulations requirements. Drawing errors and omissions to be reported to the architect. To be read in conjunction with Architect's specification and other consultant information.

Rev	Description	Date
P1	Issued for coordination	07/04/22

Items annotated in red are in design development and require input from Contractor, Design Team, Subcontractor, Statutory Authority and/or Warranty Provider.

Key:

EWS-601 - Parge Coat - nom. 15mm

Indicative airtightness tape/membrane - Varies - refer to 1:2 details (AGV-HBA-ZZ-ZZ-DR-A-210900/901) for products/detailing

Product at balcony thresholds to be confirmed via compatibility test

MAC-535 - DPC/Cavity Tray

Windproof tape to mineral wool insulation - Tescon Vana
All window brackets, fixings and flashings/cills to subcontractor design

Below Ground Waterproofing Key:

All products indicative and to specialist's design

RIW Toughseal (2No. coats)

RIW Sheetseal 226

RIW DPM Blue

RIW Gas Seal Tape

RIW Adhesive Tape

Waterproofing systems should be designed by a waterproofing design specialist. Designers who have successfully completed the Certified Surveyor in Structural Waterproofing (CSSW) qualification available from the Property Care Association (PCA) are generally acceptable to Warranty Provider. An alternative demonstration of competence may be acceptable, subject to successful review with the Warranty Provider.

159 St John Street
London EC1V 4QJ

mail@hawkinsbrown.com
hawkinsbrown.com

Hawkins\Brown

Project
Agar Grove Phase 1c
Block JKL

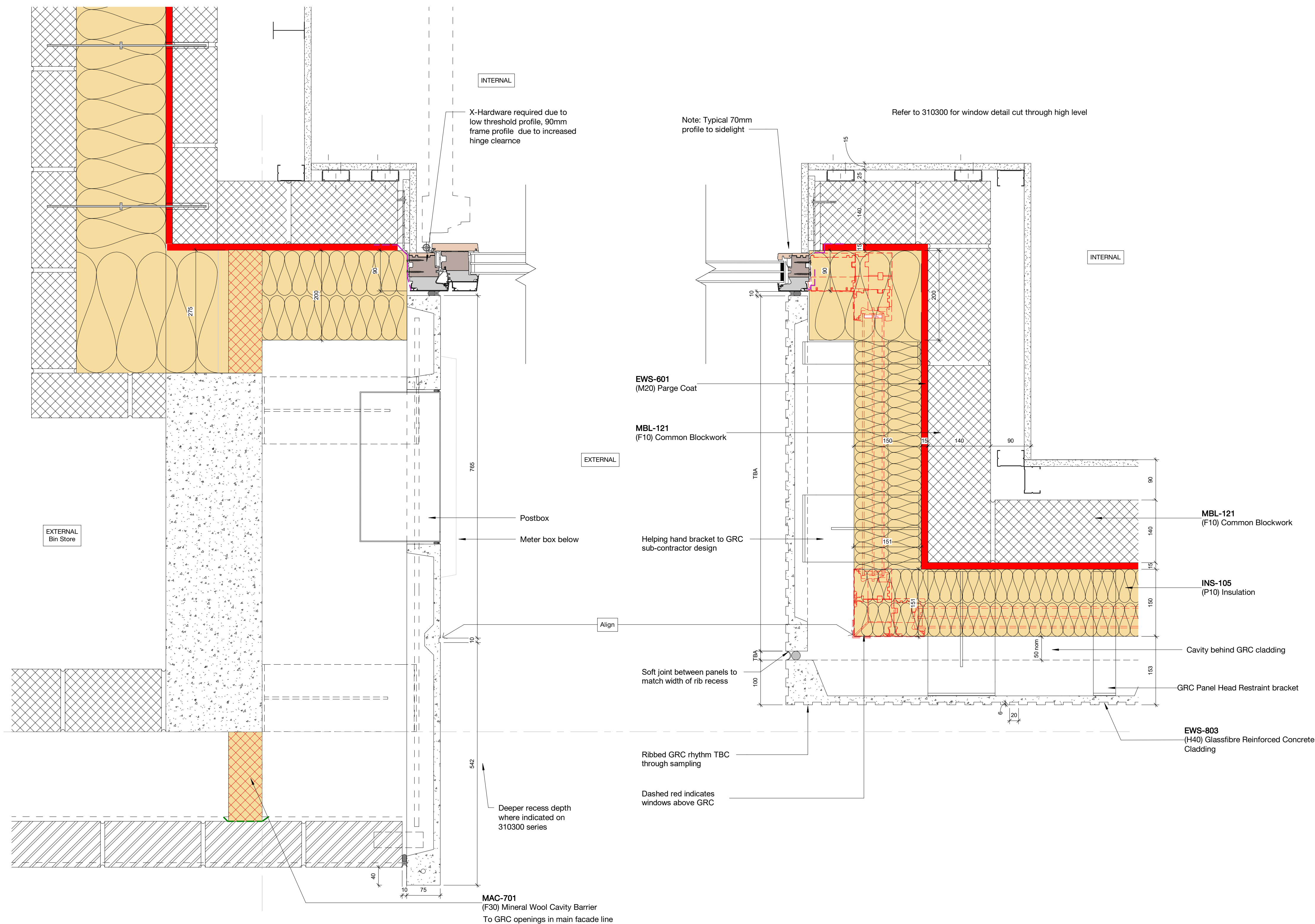
Drawing
Ground Floor Private Entrance
Details Sheet 2

Scale @ A1 1 : 5	Date Apr 2022
---------------------	------------------

Drawn By CG	Checked By TC
----------------	------------------

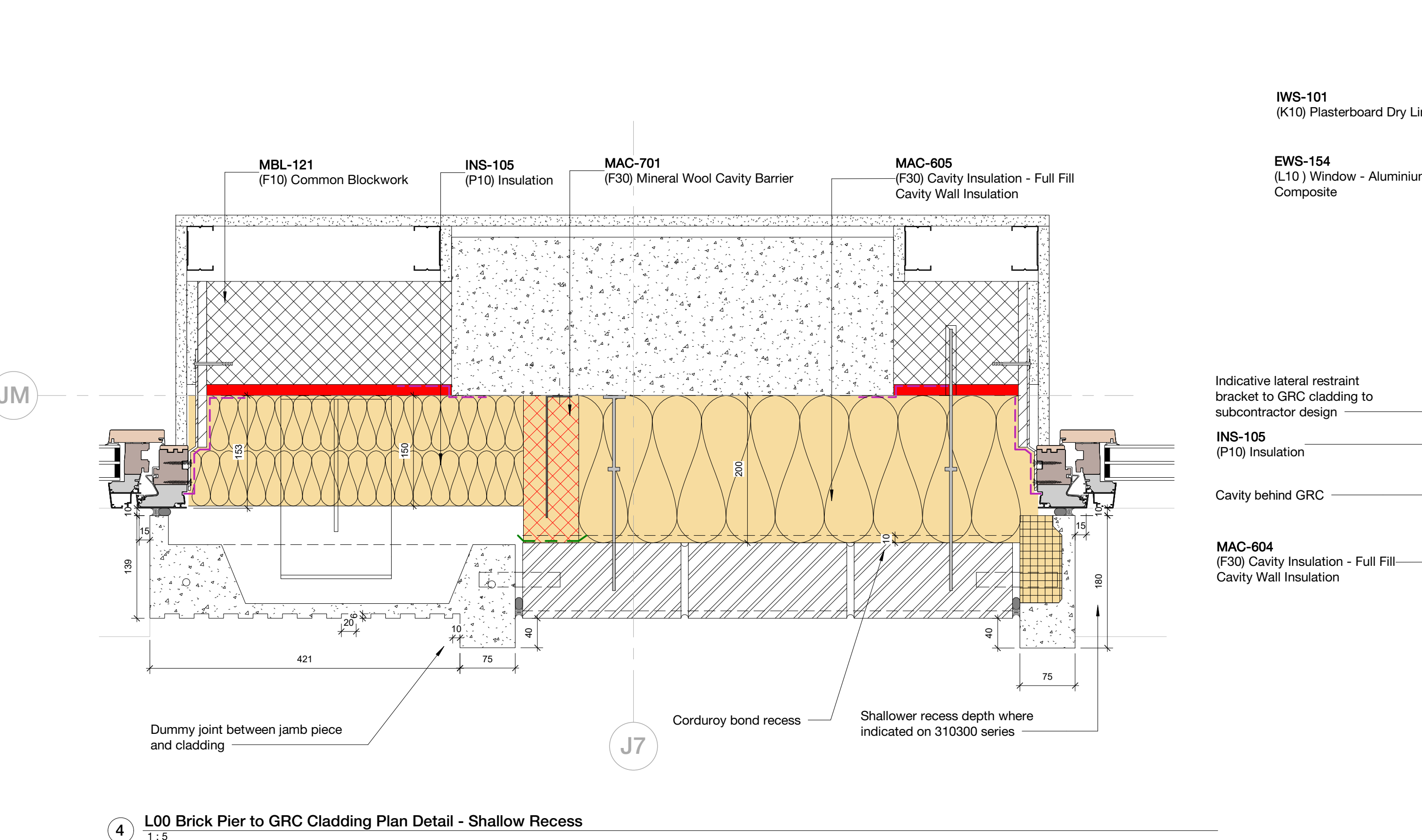
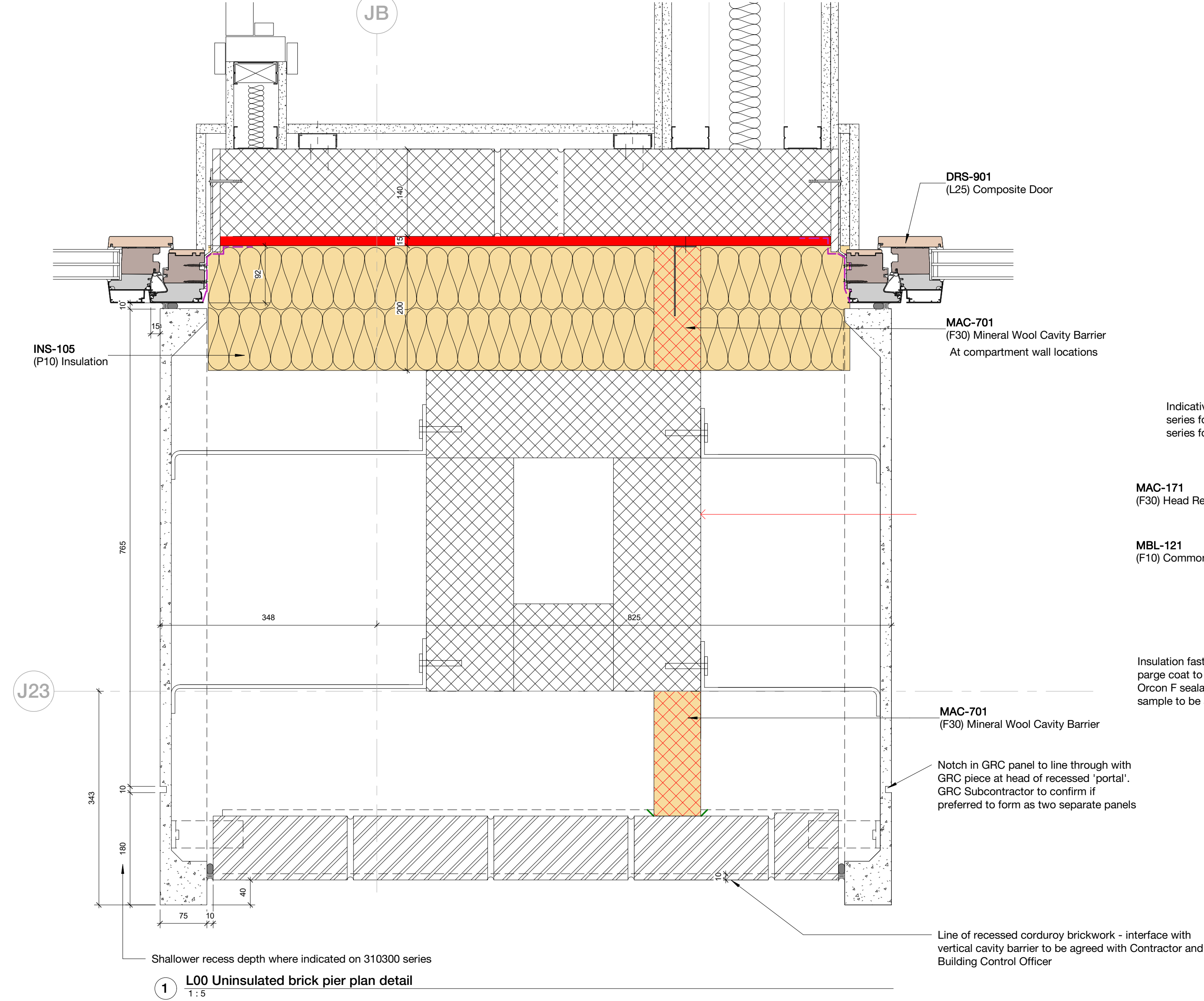
Job Number	Status	Purpose of Issue
1423-C	S1	Coordination

Drawing No.	Rev
AGV-HBA-JKL-ZZ-DR-A-210411	P1

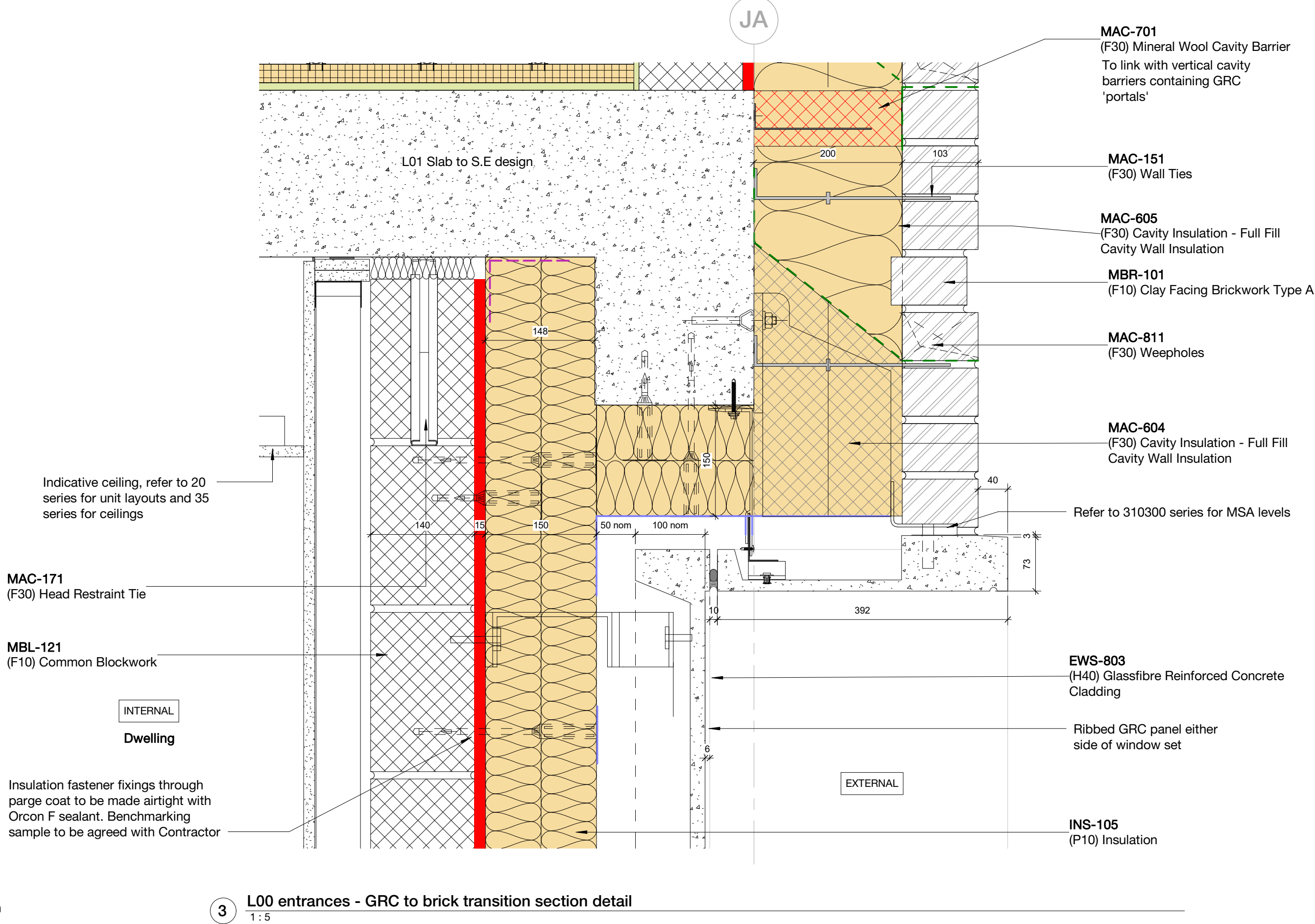


1 Entrance Door Plan Detail
1:5

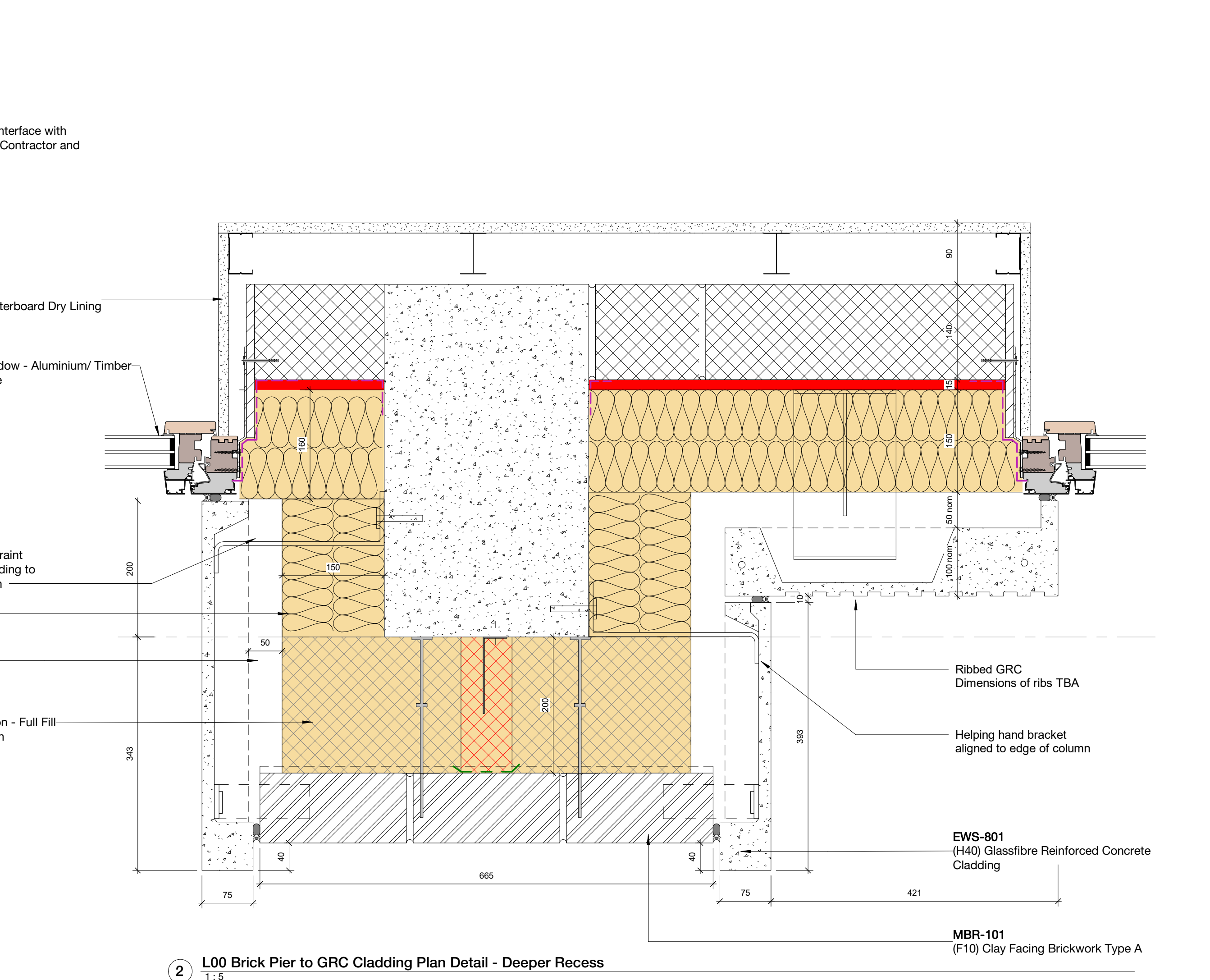
Refer to AGV-HBA-JKL-00-DR-A-210423 for typical specification references.
Refer to AGV-HBA-JKL-00-DR-A-310300 Series for front entrance setting out.
Cavity barrier positions to be confirmed with Building Control Officer



4 L00 Brick Pier to GRC Cladding Plan Detail - Shallow Recess
1:5



3 L00 entrances - GRC to brick transition section detail
1:5



2 L00 Brick Pier to GRC Cladding Plan Detail - Deeper Recess
1:5

Copyright Hawkins\Brown Architects
No implied licence exists. This drawing should not be used to calculate areas for the purposes of valuation. Do not scale this drawing. All dimensions to be checked on the site by the contractor and such dimensions to be their responsibility. All work must comply with relevant British Standards and Building Regulations requirements. Drawing errors and omissions to be reported to the architect. To be read in conjunction with Architect's specification and other consultant information.

Rev	Description	Date
P1	Issued for coordination	07/04/22

Items annotated in red are in design development and require input from Contractor, Design Team, Subcontractor, Statutory Authority and/or Warranty Provider.

Key:

EWS-601 - Parge Coat - nom. 15mm

Indicative airtightness tape/membrane - Varies - refer to 1:2 details (AGV-HBA-ZZ-ZZ-DR-A-210900/901) for products/detailing
Product at balcony thresholds to be confirmed via compatibility test

MAC-535 - DPC/Cavity Tray

Windproof tape to mineral wool insulation - Tescon Vana
All window brackets, fixings and flashings/cills to subcontractor design

Below Ground Waterproofing Key:

All products indicative and to specialist's design

RIW Toughseal (2No. coats)

RIW Sheetseal 226

RIW DPM Blue

RIW Gas Seal Tape

RIW Adhesive Tape

Waterproofing systems should be designed by a waterproofing design specialist. Designers who have successfully completed the Certified Surveyor in Structural Waterproofing (CSSW) qualification available from the Property Care Association (PCA) are generally acceptable to Warranty Provider. An alternative demonstration of competence may be acceptable, subject to successful review with the Warranty Provider.

159 St John Street
London EC1V 4QJ

mail@hawkinsbrown.com
hawkinsbrown.com

Hawkins\Brown

Project
Agar Grove Phase 1c
Block JKL

Drawing
Ground Floor Private Entrance
Details Sheet 3

Scale @ A1 1 : 5		Date Apr 2022
Drawn By CG		Checked By TC
Job Number 1423-C	Status S1	Purpose of Issue Coordination
Drawing No. AGV-HBA-JKL-00-DR-A-210419		Rev P1