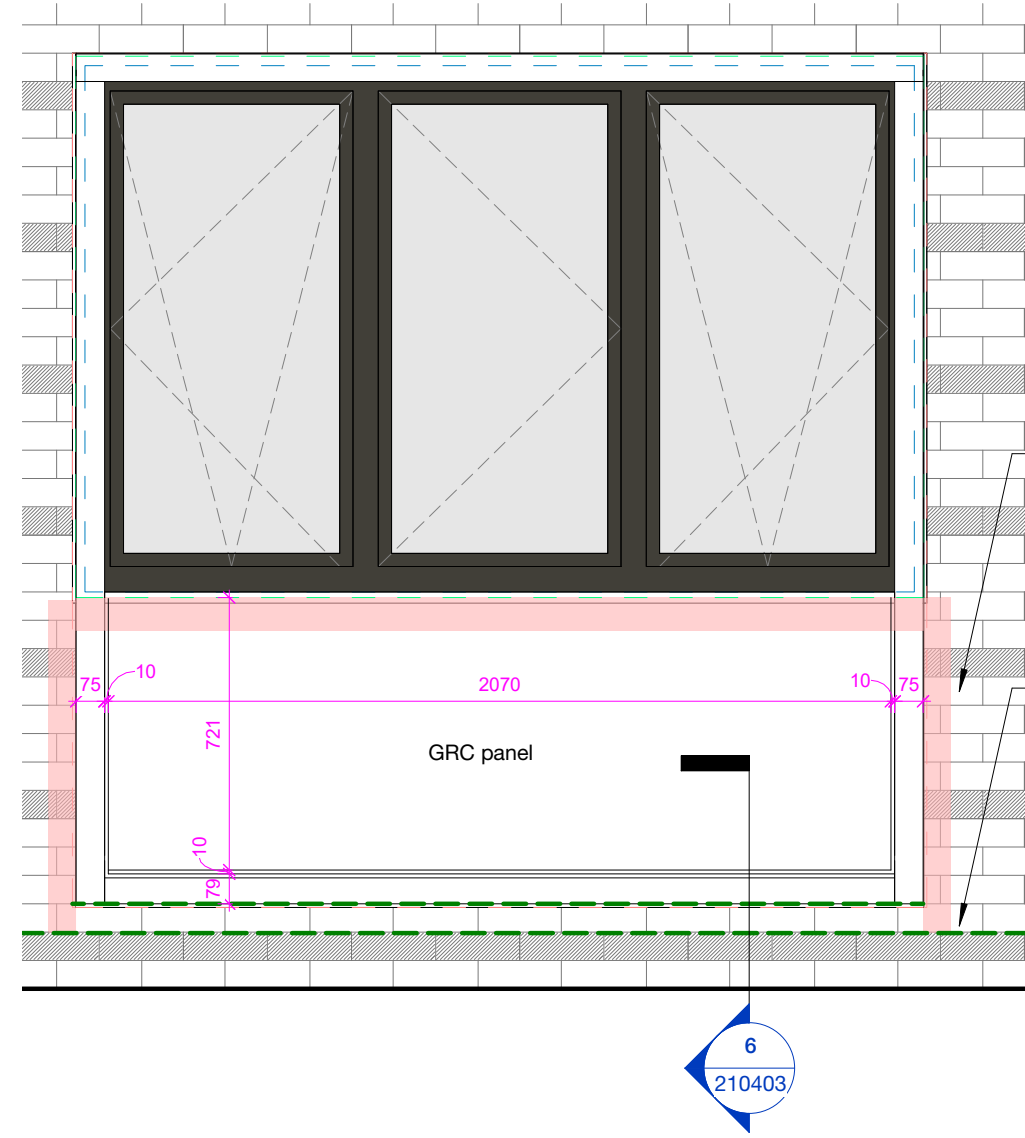
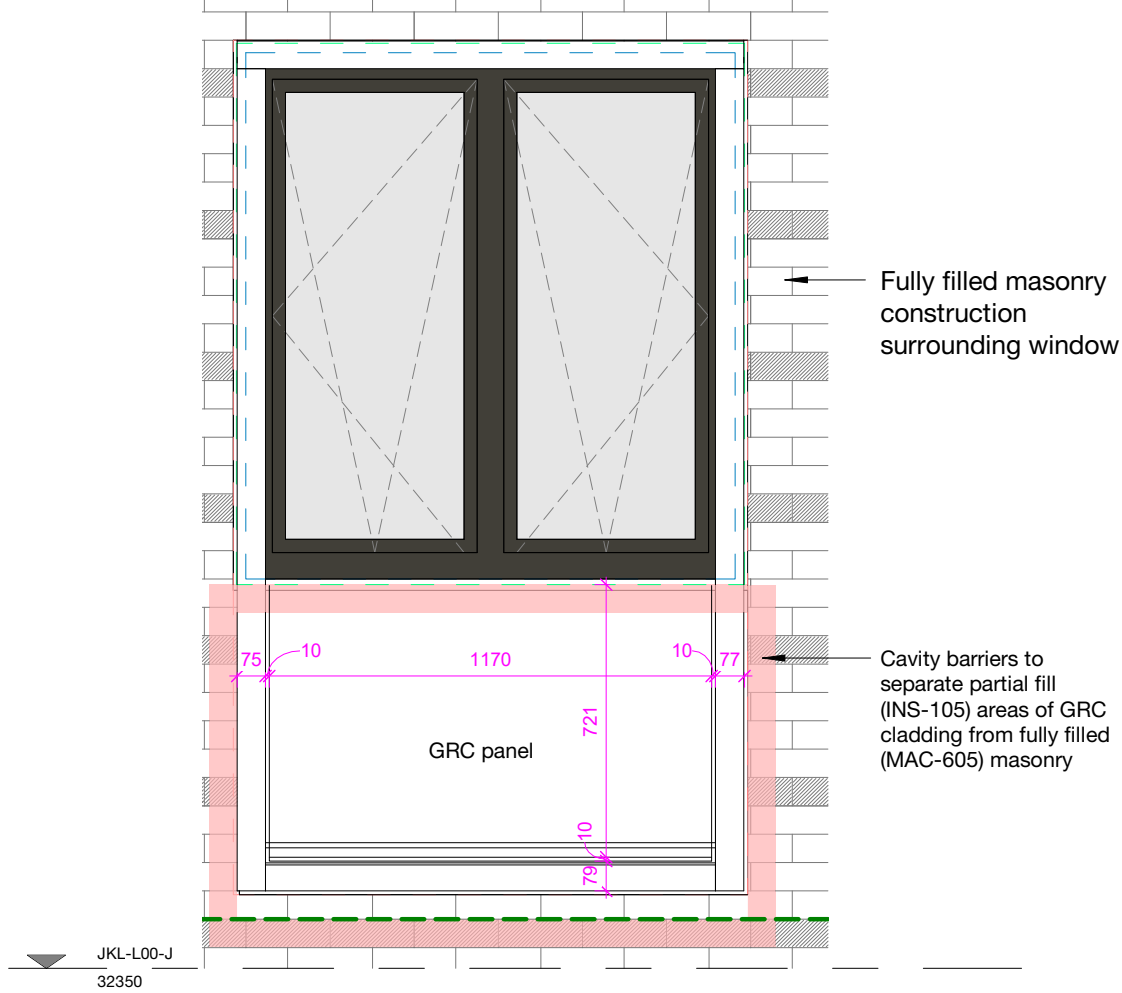


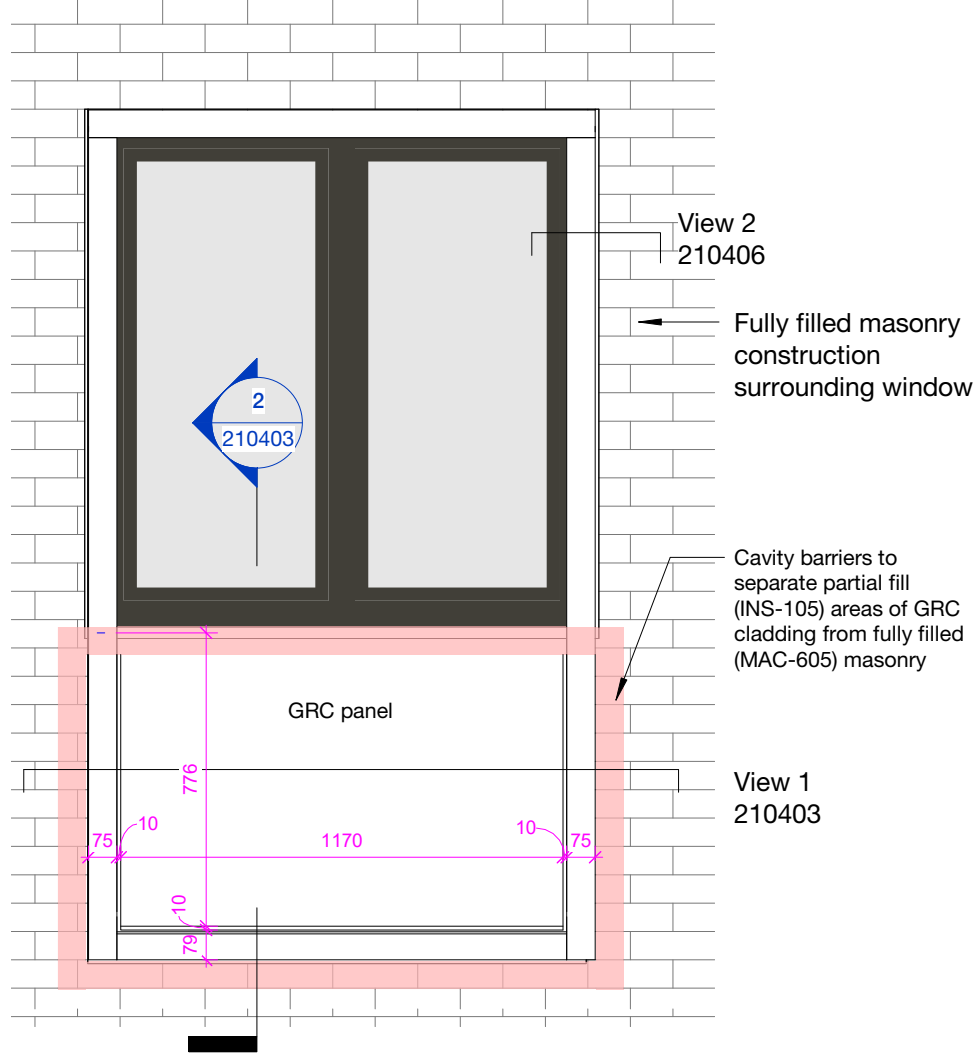
Rev	Description	Date
P1	Issued for Coordination	04.03.22



5 Window Type 13 elevation
1:20
Location on L00 only



4 Window Type 04B elevation
1:20



3 Window Type 04A elevation
1:20

EWS-154
(L10) Window - Aluminium/ Timber Composite
EWS-414
(H31) Metal Cill Type JKL-C-4

FPS-102
(P12) Horizontal Cavity Barriers
Hooked s/s helping hand bracket for lateral restraint (non-continuous)

Insulation restraint fixings to avoid GRC helping hand system. Penetrations thru parch coat (red line) to be repaired to retain airtightness integrity

INS-105
(P10) Insulation
Insulation formed with 2 layers x 75mm with staggered fixings. Fixings to avoid cavity barrier (dashed green). Joints/penetrations taped with Tescon Vana

Potential to reduce cavity size to increase insulation thickness if sealed joint cladding used

EWS-804
(H40) Glassfibre Reinforced Concrete Cladding

GRC dead load supported off outer leaf

MAC-535
(F30) Cavity Tray - Site Formed

MAC-604
(F30) Cavity Insulation - Full Fill Cavity Wall Insulation

MAC-811
(F30) Weepholes

MAC-701
(F30) Mineral Wool Cavity Barrier

MAC-535 DPC to face

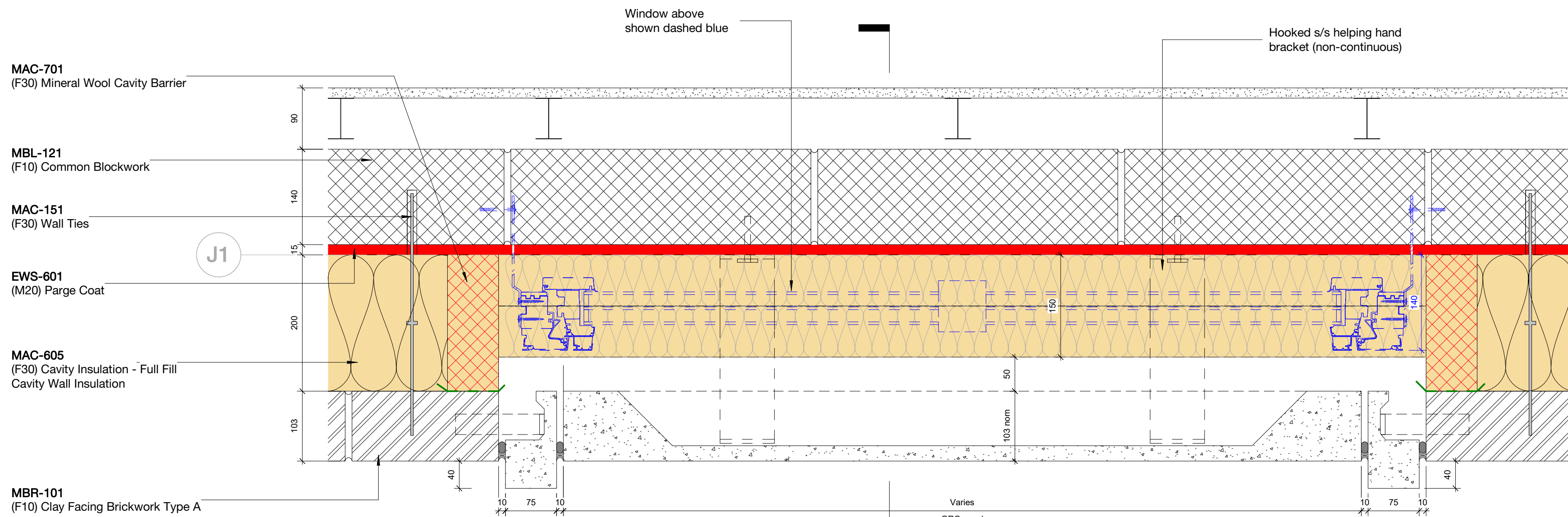
MAC-151
(F30) Wall Ties

MBR-101
(F10) Clay Facing Brickwork Type A

Indicative masonry support angle to subcontractor design

MAC-604
(F30) Cavity Insulation - Full Fill Cavity Wall Insulation

2 Window Type 4 Typical Detail Section
1:5



1 Window Type 4 Detail Plan
1:5

MBL-121
(F10) Common Blockwork

Narrow splashback finish to be agreed i.e. tile/vertical return of worktop.

IWS-101
(K10) Plasterboard Dry Lining

Insulation fastener fixings through parch coat to be made airtight with Orcon F sealant. Benchmarking sample to be agreed with Contractor

INS-105
(P10) Insulation

MAC-535
DPC

MAC-535
(F30) Cavity Tray - Site Formed

MAC-811
(F30) Weepholes

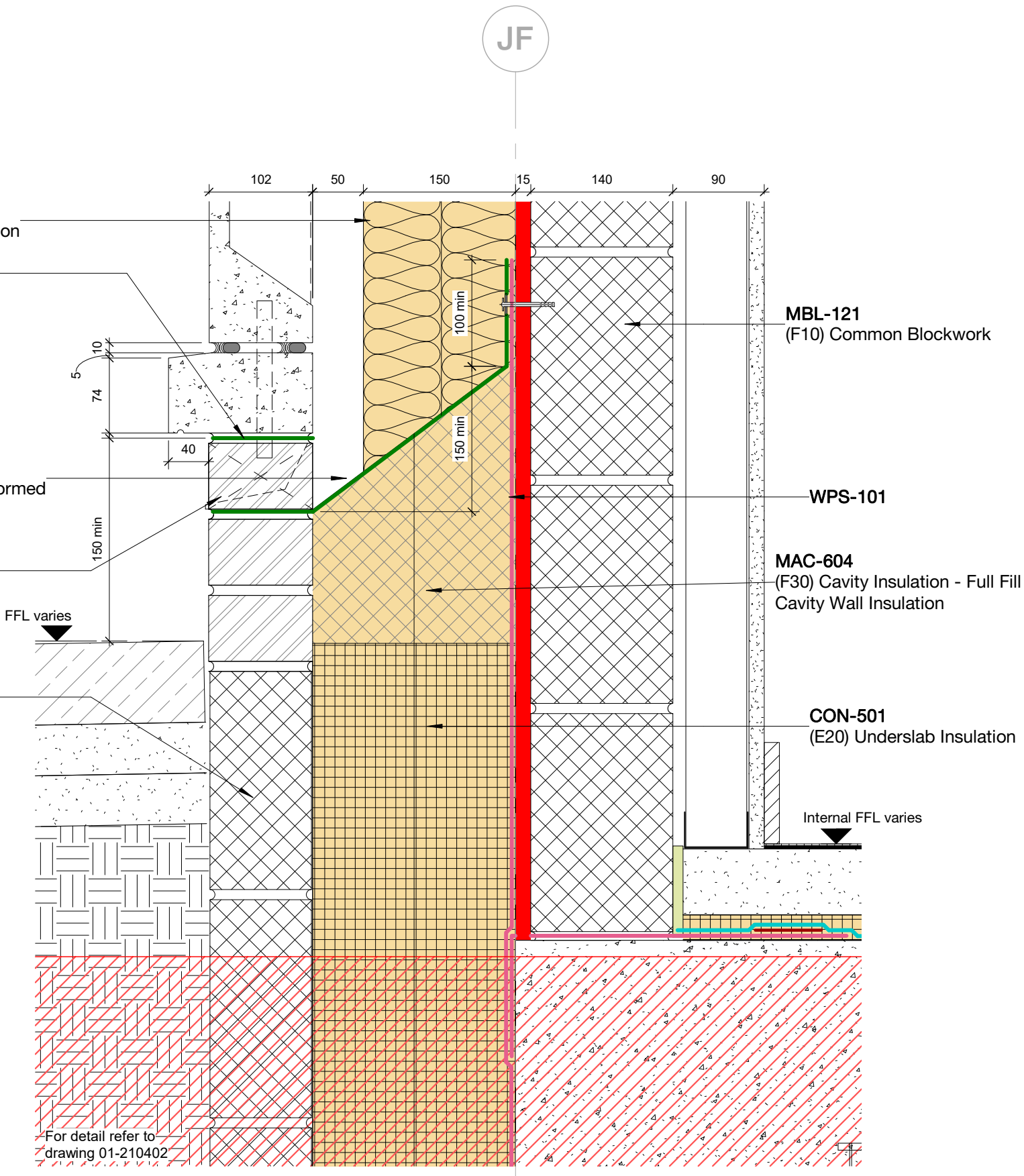
MBL-122
(F10) Common Blockwork

Refer to 43 Series

RC slab to SE Design

For detail refer to drawing 01-210406

6 Window Type 4 L00 Detail Section
1:5



Items annotated in red are in design development and require input from Contractor, Design Team, Subcontractor, Statutory Authority and/or Warranty Provider.

Key:

EWS-601 - Parch Coat - nom. 15mm

Indicative airtightness tape/membrane - Varies - refer to 1:2 details (AGV-HBA-ZZ-DR-A-210900/901) for products/detailing
Product at balcony thresholds to be confirmed via compatibility test

MAC-535 - DPC/Cavity Tray

Windproof tape to mineral wool insulation - Tescon Vana
All window brackets, fixings and flashings/cills to subcontractor design

159 St John Street London EC1V 4QJ
mail@hawkinsbrown.com hawkinsbrown.com

Hawkins\Brown

Project
Agar Grove Phase 1c
Block JKL

Drawing
Typical Kitchen/Bathroom
Window

Scale @ A1
As indicated

Date
Apr 2022

Drawn By
CG

Checked By
TC

Job Number
1423-C

Status
S1

Purpose of Issue
Coordination

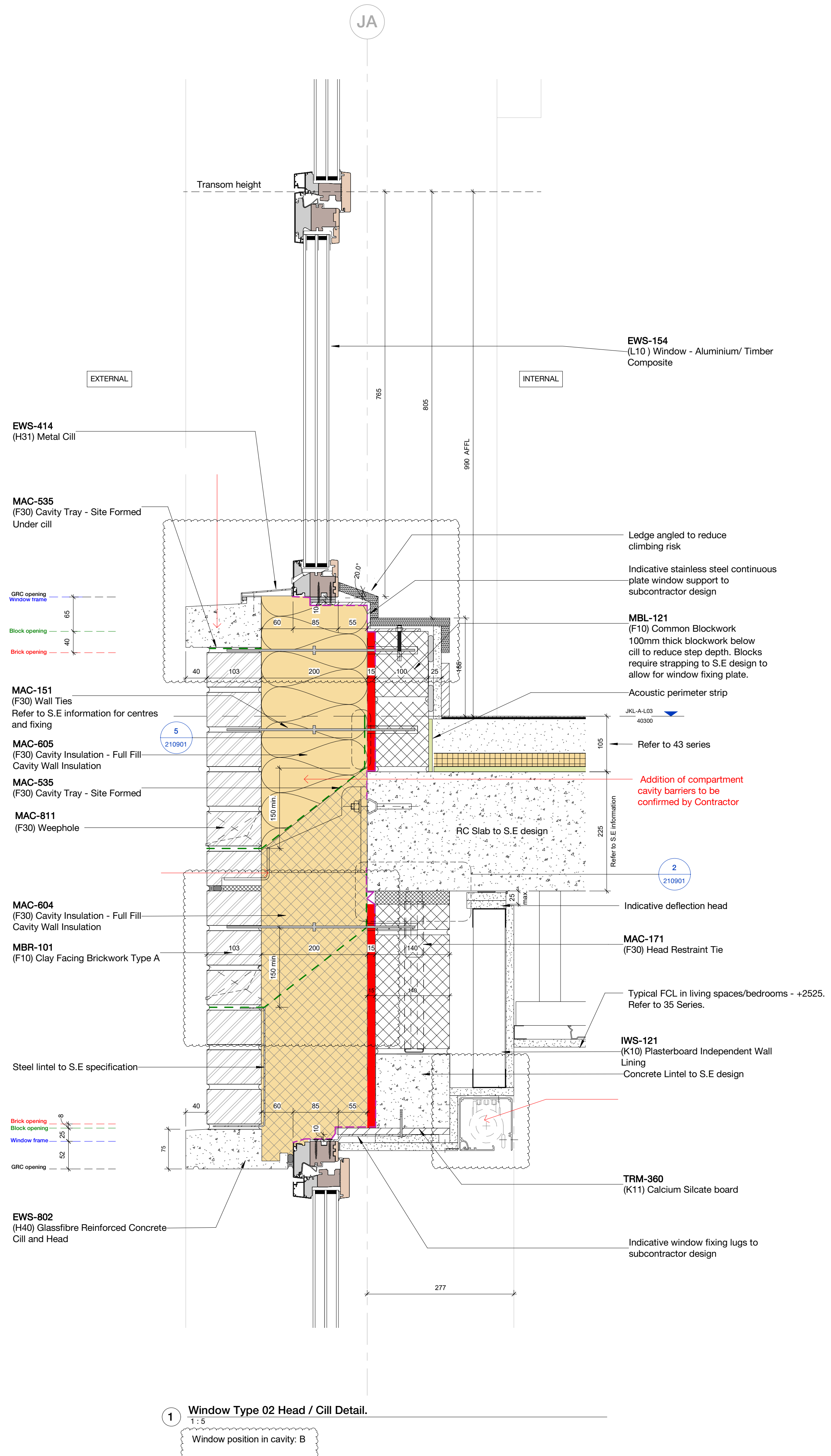
Drawing No.

Rev

AGV-HBA-JKL-ZZ-DR-A-210403 P1

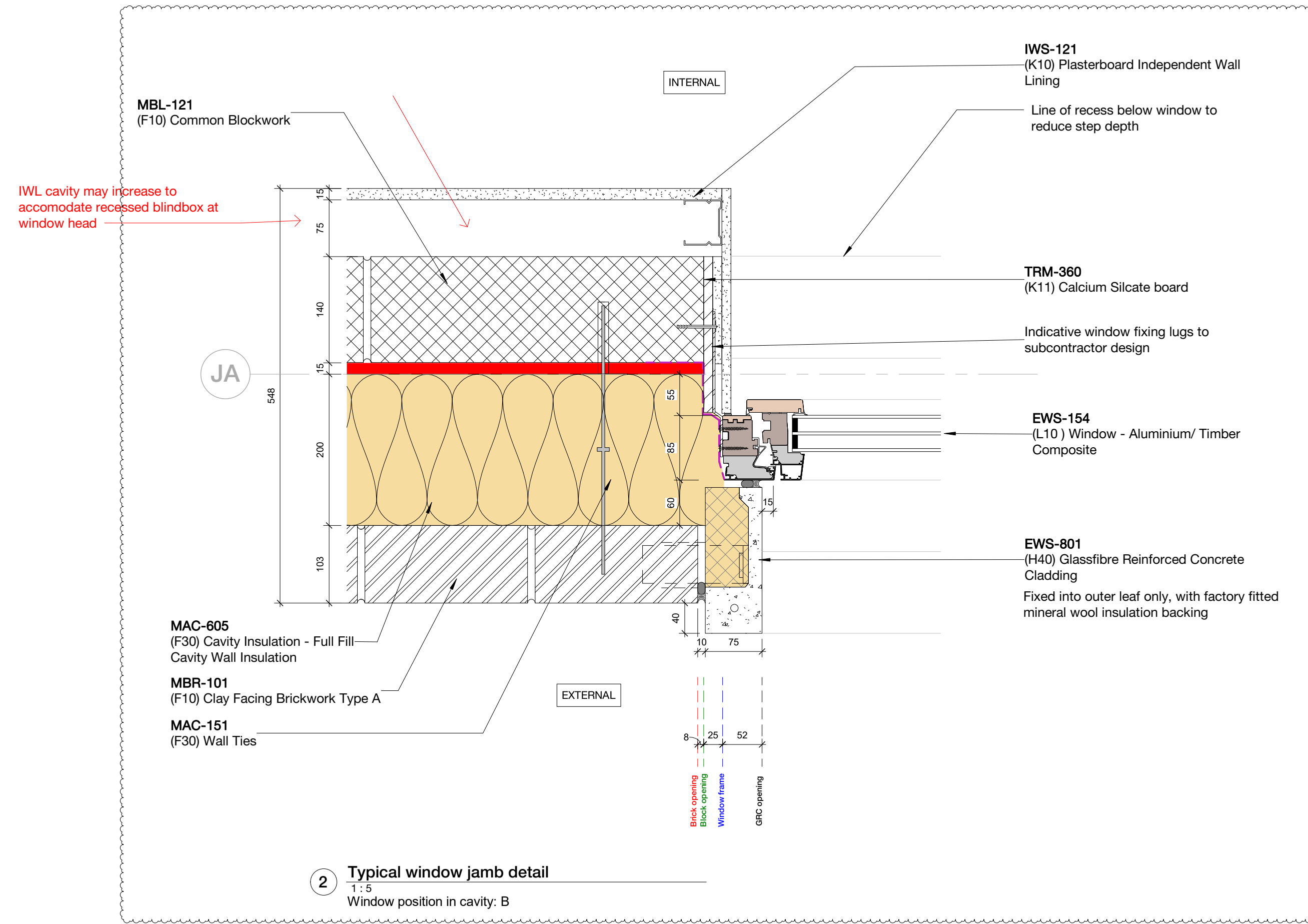
Copyright Hawkins\Brown Architects
 No implied licence exists. This drawing should not be used to calculate areas for the purposes of valuation. Do not scale this drawing. All dimensions to be checked on the site by the contractor and such dimensions to be their responsibility. All work must comply with relevant British Standards and Building Regulations requirements. Drawing errors and omissions to be reported to the architect. To be read in conjunction with Architect's specification and other consultant information.

Rev	Description	Date
P1	Issued for Coordination	01/03/21
P2	Design team/contractor comments addressed, amendments as described on sheet	16/03/21
P3	Issued for Coordination	16/08/21
P4	Issued for Coordination	25/08/21
P5	Updates as highlighted on sheet	20/12/21

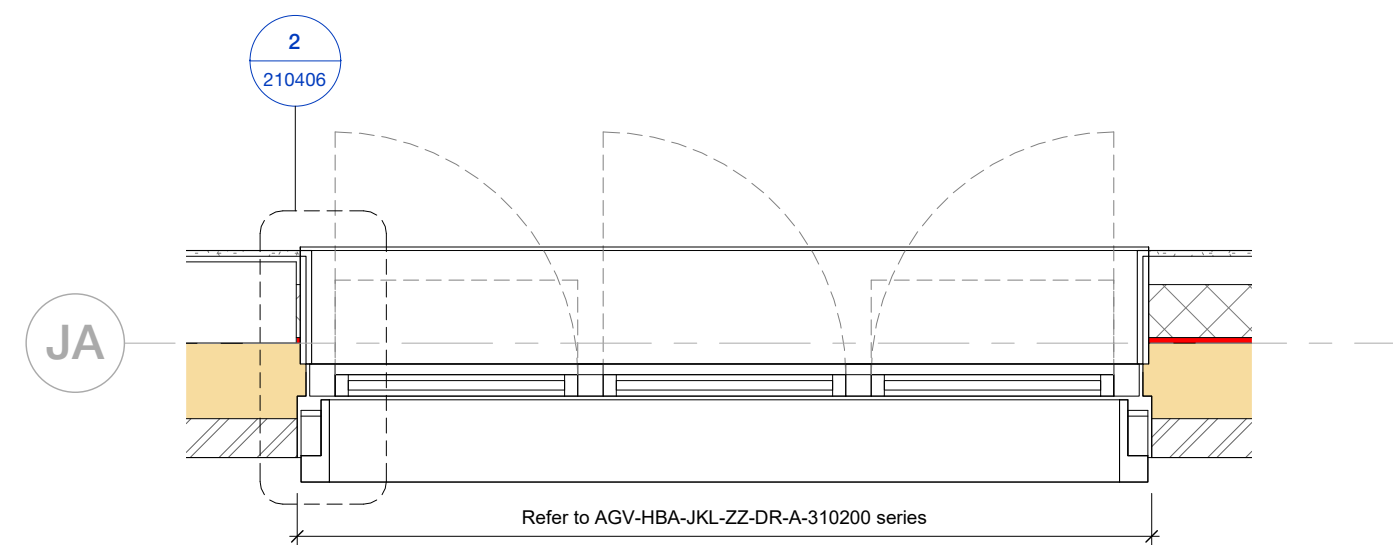


1 Window Type 02 Head / Cill Detail.
1:5

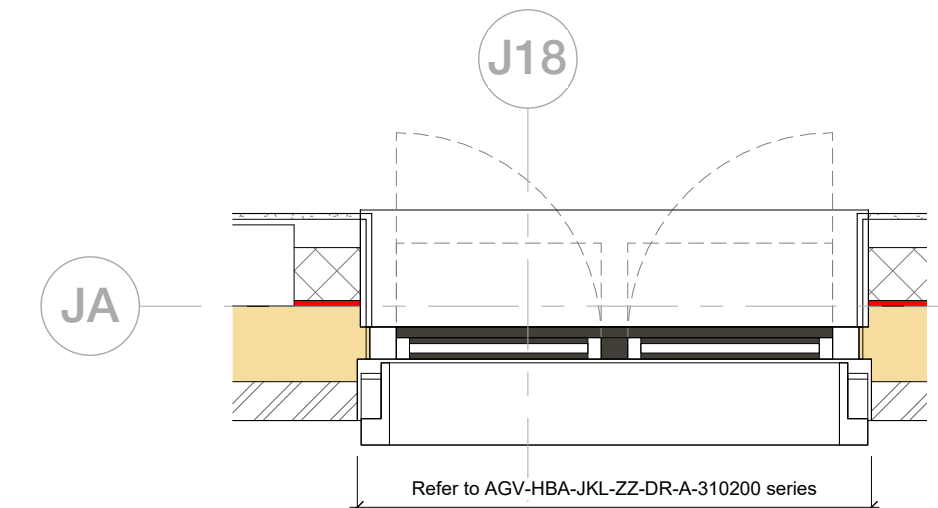
Window position in cavity: B



2 Typical window jamb detail
1:5
Window position in cavity: B



3 Typical Window Plan - Triple
1:20



4 Typical Window Plan - Double
1:20

Items annotated in red are in design development and require input from Contractor, Design Team, Subcontractor, Statutory Authority and/or Warranty Provider.

Key:

Parge Coat - nom. 15mm

Indicative airtightness tape/membrane - Refer to 1:2 details (AGV-HBA-ZZ-ZZ-DR-A-210900) for products/detailing

Product to be confirmed via compatibility test

DPM

DPC

EPDM

Windtight Tape

All window brackets and fixings to subcontractor design

159 St John Street London EC1V 4QJ

mail@hawkinsbrown.com

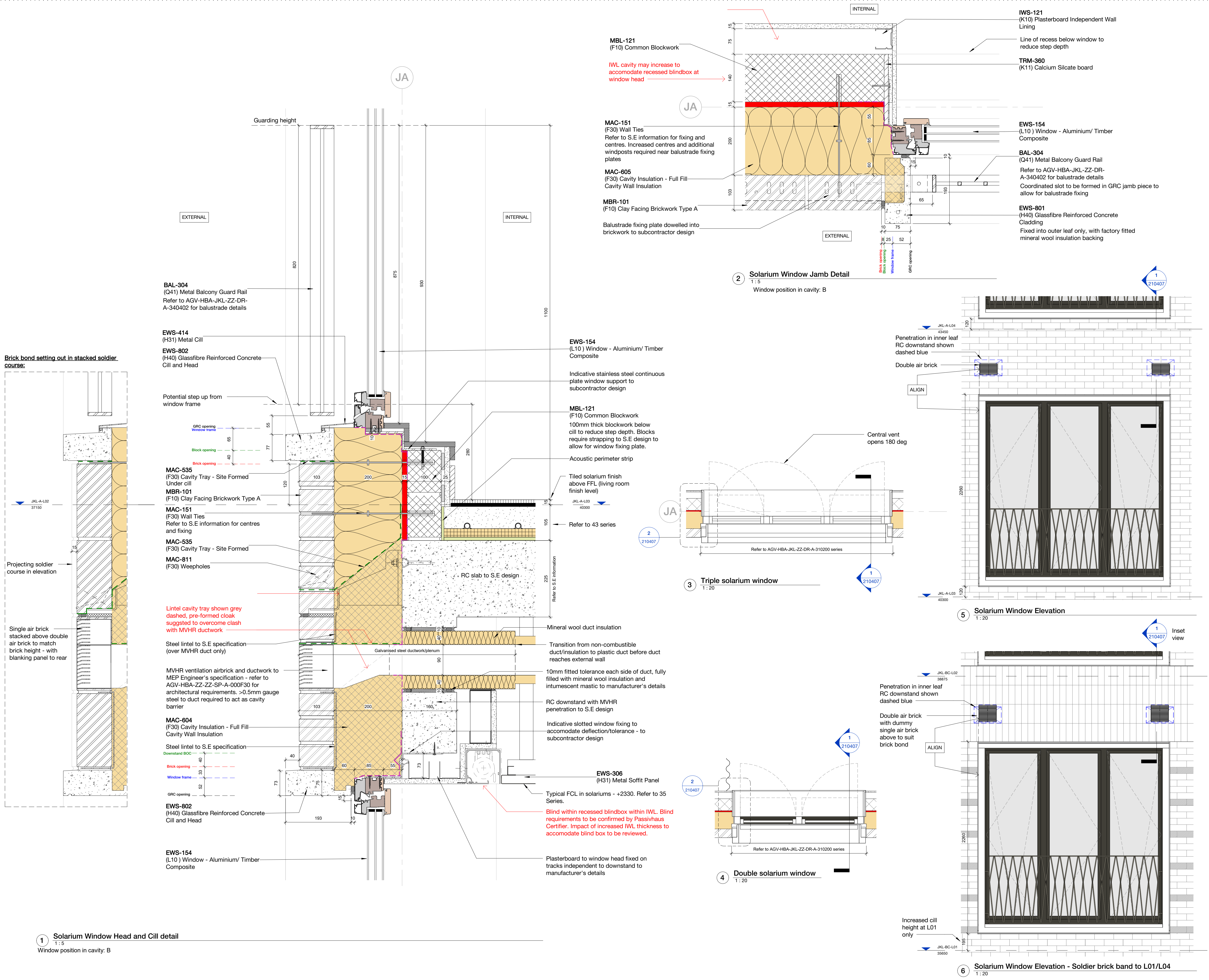
hawkinsbrown.com

Hawkins\Brown

Project
 Agar Grove Phase 1c
 Block JKL

Drawing
 Typical Window Details

Scale @ A1 As indicated	Date March 2021
Drawn By TC	Checked By JW
Job Number 1423-C	Status S1
Purpose of Issue Coordination	
Drawing No. AGV-HBA-JKL-ZZ-DR-A-210406	Rev P5



Copyright Hawkins\Brown Architects
No implied licence exists. This drawing should not be used to calculate areas for the purposes of valuation. Do not scale this drawing. All dimensions to be checked on the site by the contractor and such dimensions to be their responsibility. All work must comply with relevant British Standards and Building Regulations requirements. Drawing errors and omissions to be reported to the architect. To be read in conjunction with Architect's specification and other consultant information.

Rev	Description	Date
P1	Issued for Coordination	01/03/21
P2	Design team/contractor comments addressed, amendments as described on sheet	16/03/21
P3	Updates as highlighted on sheet	20/12/21

Items annotated in red are in design development and require input from Contractor, Design Team, Subcontractor, Statutory Authority and/or Warranty Provider.

- Key:**
- Parge Coat - nom. 15mm
 - Indicative airtightness tape/membrane - Refer to 1:2 details (AGV-HBA-ZZ-ZZ-DR-A-210900) for products/detailing
 - Product to be confirmed via compatibility test
 - DPM
 - DPC
 - EPDM
 - Windtight Tape
 - All window brackets and fixings to subcontractor design

159 St John Street London EC1V 4JQ
mail@hawkinsbrown.com
hawkinsbrown.com

Hawkins\Brown

Project
Agar Grove Phase 1c
Block JKL

Drawing
Solarium Window Details

Scale @ A1
As indicated

Date
March 2021

Drawn By
TC

Checked By
JW

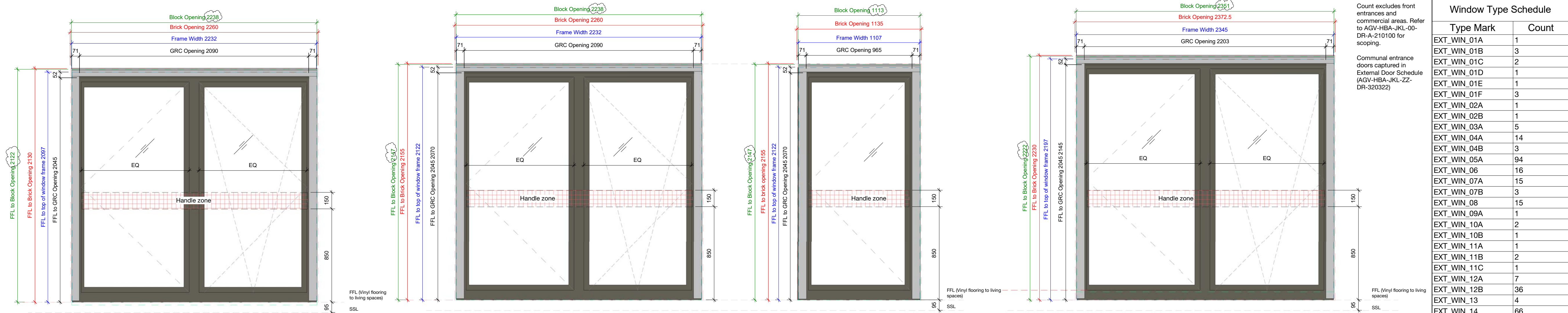
Job Number
1423-C

Status
S1

Purpose of Issue
Coordination

Drawing No.
AGV-HBA-JKL-ZZ-DR-A-210407

Rev
P3



Count excludes front entrances and commercial areas. Refer to AGV-HBA-JKL-00-DR-A-210100 for scoping.

Communal entrance doors captured in External Door Schedule (AGV-HBA-JKL-ZZ-DR-320322)

Type Mark	Count
EXT_WIN_01A	1
EXT_WIN_01B	3
EXT_WIN_01C	2
EXT_WIN_01D	1
EXT_WIN_01E	1
EXT_WIN_01F	3
EXT_WIN_02A	1
EXT_WIN_02B	1
EXT_WIN_03A	5
EXT_WIN_04A	14
EXT_WIN_04B	3
EXT_WIN_05A	94
EXT_WIN_06	16
EXT_WIN_07A	15
EXT_WIN_07B	3
EXT_WIN_08	15
EXT_WIN_09A	1
EXT_WIN_10A	2
EXT_WIN_10B	1
EXT_WIN_11A	1
EXT_WIN_11B	2
EXT_WIN_11C	1
EXT_WIN_12A	7
EXT_WIN_12B	36
EXT_WIN_13	4
EXT_WIN_14	66
EXT_WIN_15A	6
EXT_WIN_15B	32
EXT_WIN_15C	8
EXT_WIN_16A	11
EXT_WIN_16B	1
EXT_WIN_16C	2
EXT_WIN_16D	3
Grand total:	362

Copyright Hawkins\Brown Architects
No implied licence exists. This drawing should not be used to calculate areas for the purposes of valuation. Do not scale this drawing. All dimensions to be checked on the site by the contractor and such dimensions to be their responsibility. All work must comply with relevant British Standards and Building Regulations requirements. Drawing errors and omissions to be reported to the architect. To be read in conjunction with Architect's specification and other consultant information.

Rev	Description	Date
P1	Issued for Coordination	22/04/21
P2	W-JKL-04-096-W-JKL-05-059 added, EXT_WIN_07B width reduced, EXT_WIN_06 height increased and counts updated	21/05/21
P3	Annotation updated	16/08/21
P4	Amendments as indicated on sheet	14/09/21



To be read in conjunction with:
 -Window schedule: AGV-HBA-JKL-ZZ-SH-A-310001
 -Window details: AGV-HBA-JKL-ZZ-DR-A-210400 Series
 -Airtightness taping details: AGV-HBA-JKL-ZZ-DR-A-210900/901
 -Fire Strategy Report: AFF-20566-02-AgarGrovePhase1C_FSR_01

Window unit performance:
 -Refer to AGV-HBA-JKL-ZZ-SH-A-310001 for U-Value, G-Value and Acoustic requirements
 -VLT: 70%
 -Barrier loading: BS 6180 Table 2 Class (i)
 -Impact resistance: Class 1 to BS EN 12600
 -Security: PAS24:2016 to all L00 window/doors with Class P1A laminated glass to BS EN 350:2000
 -Airtightness: Class 4 to BS EN 12207/1026

Window operation:
 -Handing direction of all window assemblies to be confirmed
 -Windows indicated as fire egress routes on AGV-HBA-JKL-ZZ-SH-A-310001 to be fitted with non-key locking hardware and should be capable of remaining open without being held
 -Dashed opening direction lines drawn to UK convention i.e. arrow pointing towards hinge side
 -Bespoke aftermarket cable restrictors to be fitted to L00 windows (apart from egress windows). 130mm cable length on top of sash to restrict tilt function, 100mm cable length to opening side to restrict turn function

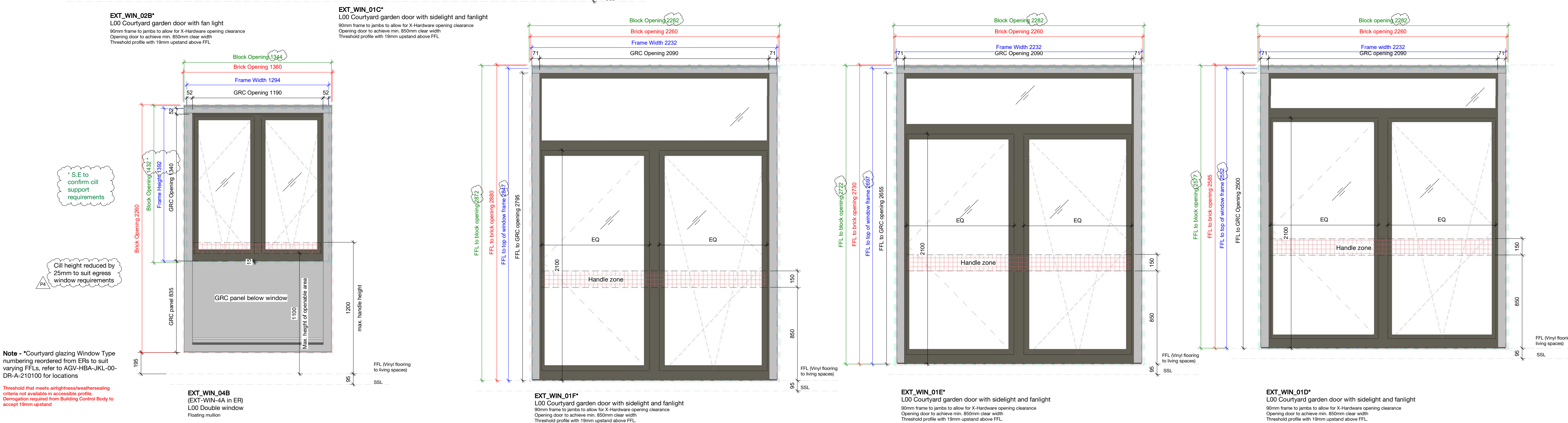
Glass selection:
 -All pane specifications to be selected by fabricator to satisfy sizes of units and performance characteristics cited
 -Refer to schedule for NBS specification of glazing units (L40 section)
 -Coatings for solar control/low-E to be selected to satisfy performance characteristics cited
 -All glass to be safe breakage in accordance with the requirements of Approved Document K
 -All toughened glass to be heat soak tested to mitigate the risks of NIS inclusions
 -Toughened glass to not be used to outer panes above ground floor in accordance with CWCT TN68 recommendations
 -All glass to be selected to prevent the risk of thermal stress fracture
 -All glass & frame selection to be evidenced for approval and to demonstrate Passivhaus compliance
 -Obscured glazing where noted on window types/AGV-HBA-JKL-ZZ-SH-A-310001

Dimensions:
 -Frame height dimensions assume Parent cill carrier piece not used due to combustibility
 -Frame dimensions are to outer frame, 10mm packing zone to all sides assumed and accounted for within Block Opening dimensions.
 -70mm outer frame profile assumed unless otherwise noted
 -10mm tolerance between GRC profile and brickwork opening

Installation:
 -All units to be installed in accordance with manufacturers recommendations
 -All fixing design by installer

Handle/controls zone. Zone reduced from Approved Document M to accommodate varying cill heights

159 St John Street
London EC1V 4JQ
mail@hawkinsbrown.com
hawkinsbrown.com



Note - Courtyard glazing Window Type numbering reordered from EFS to suit varying FFLs, refer to AGV-HBA-JKL-00-DR-A-210100 for locations

Threshold that meets airtightness/weathersealing criteria not available to accessible profile
 Demogration required from Building Control Body to accept 19mm upstand

* S E to confirm cill support requirements

Cill height reduced by 25mm to suit egress window requirements

max. handle height

max. height of operable area

1100

GRC panel BS5

GRC panel below window

1200

195

95

SSL

FFL (Vinyl flooring to living spaces)

Hawkins\Brown

Project
Agar Grove Phase 1c
Block JKL

Drawing
Window Types 01

Scale @ A1
1 : 20

Date
Apr 2021

Drawn By
TC

Checked By
JW

Job Number
1423-C

Status
S1

Purpose of Issue
Coordination

Drawing No.
AGV-HBA-JKL-ZZ-DR-A-310200

Rev
P4

Window Type Schedule	
Type Mark	Count
EXT_WIN_01A	1
EXT_WIN_01B	3
EXT_WIN_01C	2
EXT_WIN_01D	1
EXT_WIN_01E	1
EXT_WIN_01F	3
EXT_WIN_02A	1
EXT_WIN_02B	1
EXT_WIN_03A	5
EXT_WIN_04A	14
EXT_WIN_04B	3
EXT_WIN_05A	94
EXT_WIN_06	16
EXT_WIN_07A	15
EXT_WIN_07B	3
EXT_WIN_08	15
EXT_WIN_09A	1
EXT_WIN_10A	2
EXT_WIN_10B	1
EXT_WIN_11A	1
EXT_WIN_11B	2
EXT_WIN_11C	1
EXT_WIN_12A	7
EXT_WIN_12B	36
EXT_WIN_13	4
EXT_WIN_14	66
EXT_WIN_15A	6
EXT_WIN_15B	32
EXT_WIN_15C	8
EXT_WIN_16A	11
EXT_WIN_16B	1
EXT_WIN_16C	2
EXT_WIN_16D	3
Grand total:	362

Copyright Hawkins\Brown Architects
No implied licence exists. This drawing should not be used to calculate areas for the purposes of valuation. Do not scale this drawing. All dimensions to be checked on the site by the contractor and such dimensions to be their responsibility. All work must comply with relevant British Standards and Building Regulations requirements. Drawing errors and omissions to be reported to the architect. To be read in conjunction with Architect's specification and other consultant information.

Rev	Description	Date
P1	Issued for Coordination	12/04/21
P2	Amendments as indicated. EXT_WIN_12B count updated	22/04/21
P3	W-JKL-04-066+W-JKL-05-059 added. EXT_WIN_07B width reduced. EXT_WIN_06 height increased and counts updated	21/05/21
P4	EXT_WIN_06 and EXT_WIN_09A changed to inward opening	16/08/21
P5	Amendments as indicated on sheet	14/09/21
P6	Additional obscured instance noted to EXT_WIN_04A. L05 window types changed from 15B to 15C	14/10/21
P7	EXT_WIN_06 shape updated	25/10/21

To be read in conjunction with:
Window schedule: AGV-HBA-JKL-ZZ-SH-A-310001
Window details: AGV-HBA-JKL-ZZ-DR-A-210400 Series
Airtightness taping details: AGV-HBA-JKL-ZZ-DR-A-210900/001
Fire Strategy Report: AFF-20566-02-AgarGrovePhase1C_FSR_01

Window unit performance:
-Refer to AGV-HBA-JKL-ZZ-SH-A-310001 for U-Value, G-Value and Acoustic requirements
-LT: 70%
-Barrier loading: BS 6180 Table 2 Class (i)
-Impact resistance: Class 1 to BS EN 12960
-Security: PAS24:2016 to all L00 window/doors with Class P1A laminated glass to BS EN 350:2000
-Airtightness: Class 4 to BS EN 12207/1026

Window operation:
-Handing direction of all window assemblies to be confirmed
-Windows indicated as fire egress routes on AGV-HBA-JKL-ZZ-SH-A-310001 to be fitted with non-key locking hardware and should be capable of remaining open without being held
-Dashed opening direction lines drawn to UK convention ie. arrow pointing towards hinge side
-Bespoke aftermarket cable restrictors to be fitted to L00 windows (apart from egress windows). 130mm cable length on top of sash to restrict tilt function, 100mm cable length to opening side to restrict turn function.

Glass selection:
-All pane specifications to be selected by fabricator to satisfy sizes of units and performance characteristics cited
-Refer to schedule for HSB specification of glazing units (L40 section)
-Coatings for solar control/Low-E to be selected to satisfy performance characteristics cited
-All glass to be safe breakage in accordance with the requirements of Approved Document K
-All toughened glass to be heat soak tested to mitigate the risks of NIS inclusions
-Toughened glass to not be used to outer panes above ground floor in accordance with C10CT TMB8 recommendations
-All glass to be selected to prevent the risk of thermal stress fracture
-All glass & frame selection to be evidenced for approval and to demonstrate Passivhaus compliance
-Obscured glazing where noted on window types/AGV-HBA-JKL-ZZ-SH-A-310001

Dimensions:
-Frame height dimensions assume Parent cill carrier piece not used due to combustibility
-Frame dimensions are to outer frame. 10mm packing zone to all sides assumed and accounted for within Block Opening dimensions.
-70mm outer frame profile assumed unless otherwise noted
-10mm tolerance between GRC profile and brickwork opening

Installation:
-All units to be installed in accordance with manufacturers recommendations
-All fixing design by installer

Count excludes front entrances and commercial areas. Refer to AGV-HBA-JKL-00-DR-A-210100 for scoping.

Communal entrance doors captured in External Door Schedule (AGV-HBA-JKL-ZZ-DR-320322)

Count excludes front entrances and commercial areas. Refer to AGV-HBA-JKL-00-DR-A-210100 for scoping.

Communal entrance doors captured in External Door Schedule (AGV-HBA-JKL-ZZ-DR-320322)

Count excludes front entrances and commercial areas. Refer to AGV-HBA-JKL-00-DR-A-210100 for scoping.

Communal entrance doors captured in External Door Schedule (AGV-HBA-JKL-ZZ-DR-320322)

Count excludes front entrances and commercial areas. Refer to AGV-HBA-JKL-00-DR-A-210100 for scoping.

Communal entrance doors captured in External Door Schedule (AGV-HBA-JKL-ZZ-DR-320322)

Count excludes front entrances and commercial areas. Refer to AGV-HBA-JKL-00-DR-A-210100 for scoping.

Communal entrance doors captured in External Door Schedule (AGV-HBA-JKL-ZZ-DR-320322)

Count excludes front entrances and commercial areas. Refer to AGV-HBA-JKL-00-DR-A-210100 for scoping.

Communal entrance doors captured in External Door Schedule (AGV-HBA-JKL-ZZ-DR-320322)

Count excludes front entrances and commercial areas. Refer to AGV-HBA-JKL-00-DR-A-210100 for scoping.

Communal entrance doors captured in External Door Schedule (AGV-HBA-JKL-ZZ-DR-320322)

Count excludes front entrances and commercial areas. Refer to AGV-HBA-JKL-00-DR-A-210100 for scoping.

Communal entrance doors captured in External Door Schedule (AGV-HBA-JKL-ZZ-DR-320322)

Count excludes front entrances and commercial areas. Refer to AGV-HBA-JKL-00-DR-A-210100 for scoping.

Communal entrance doors captured in External Door Schedule (AGV-HBA-JKL-ZZ-DR-320322)

Count excludes front entrances and commercial areas. Refer to AGV-HBA-JKL-00-DR-A-210100 for scoping.

Communal entrance doors captured in External Door Schedule (AGV-HBA-JKL-ZZ-DR-320322)

Count excludes front entrances and commercial areas. Refer to AGV-HBA-JKL-00-DR-A-210100 for scoping.

Communal entrance doors captured in External Door Schedule (AGV-HBA-JKL-ZZ-DR-320322)

Count excludes front entrances and commercial areas. Refer to AGV-HBA-JKL-00-DR-A-210100 for scoping.

Communal entrance doors captured in External Door Schedule (AGV-HBA-JKL-ZZ-DR-320322)

Count excludes front entrances and commercial areas. Refer to AGV-HBA-JKL-00-DR-A-210100 for scoping.

Communal entrance doors captured in External Door Schedule (AGV-HBA-JKL-ZZ-DR-320322)

Count excludes front entrances and commercial areas. Refer to AGV-HBA-JKL-00-DR-A-210100 for scoping.

Communal entrance doors captured in External Door Schedule (AGV-HBA-JKL-ZZ-DR-320322)

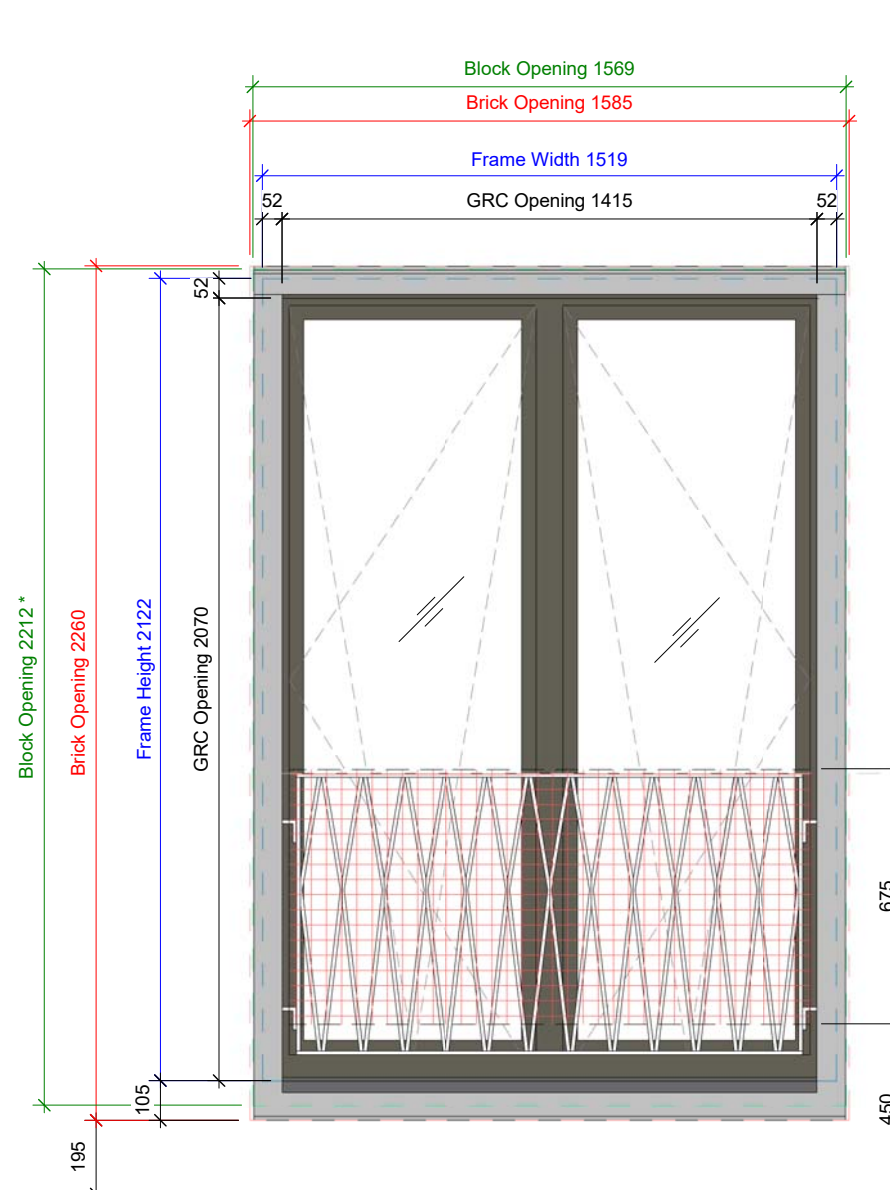
Count excludes front entrances and commercial areas. Refer to AGV-HBA-JKL-00-DR-A-210100 for scoping.

Communal entrance doors captured in External Door Schedule (AGV-HBA-JKL-ZZ-DR-320322)

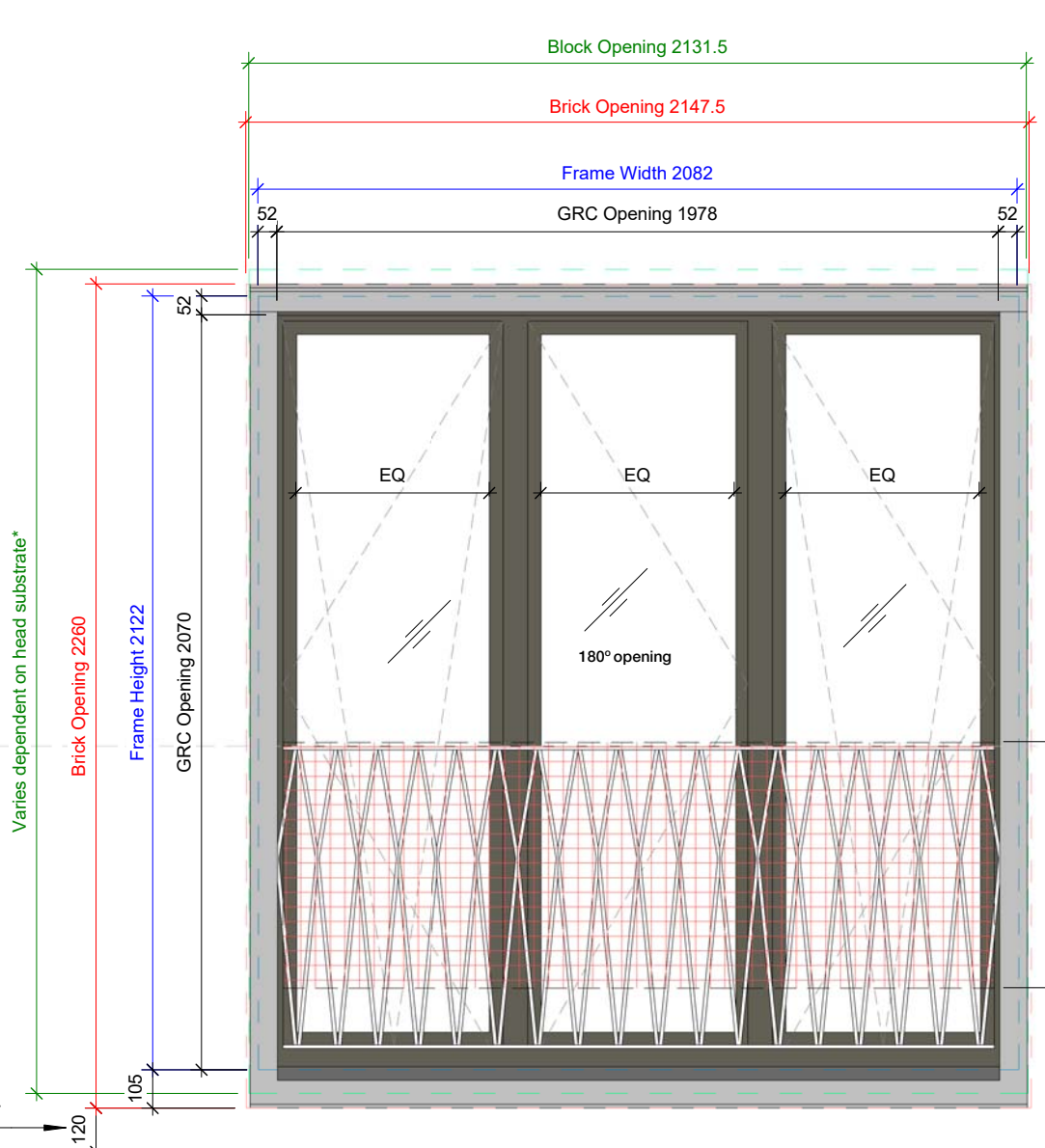
Count excludes front entrances and commercial areas. Refer to AGV-HBA-JKL-00-DR-A-210100 for scoping.

Floating mullion to all opening windows on this page

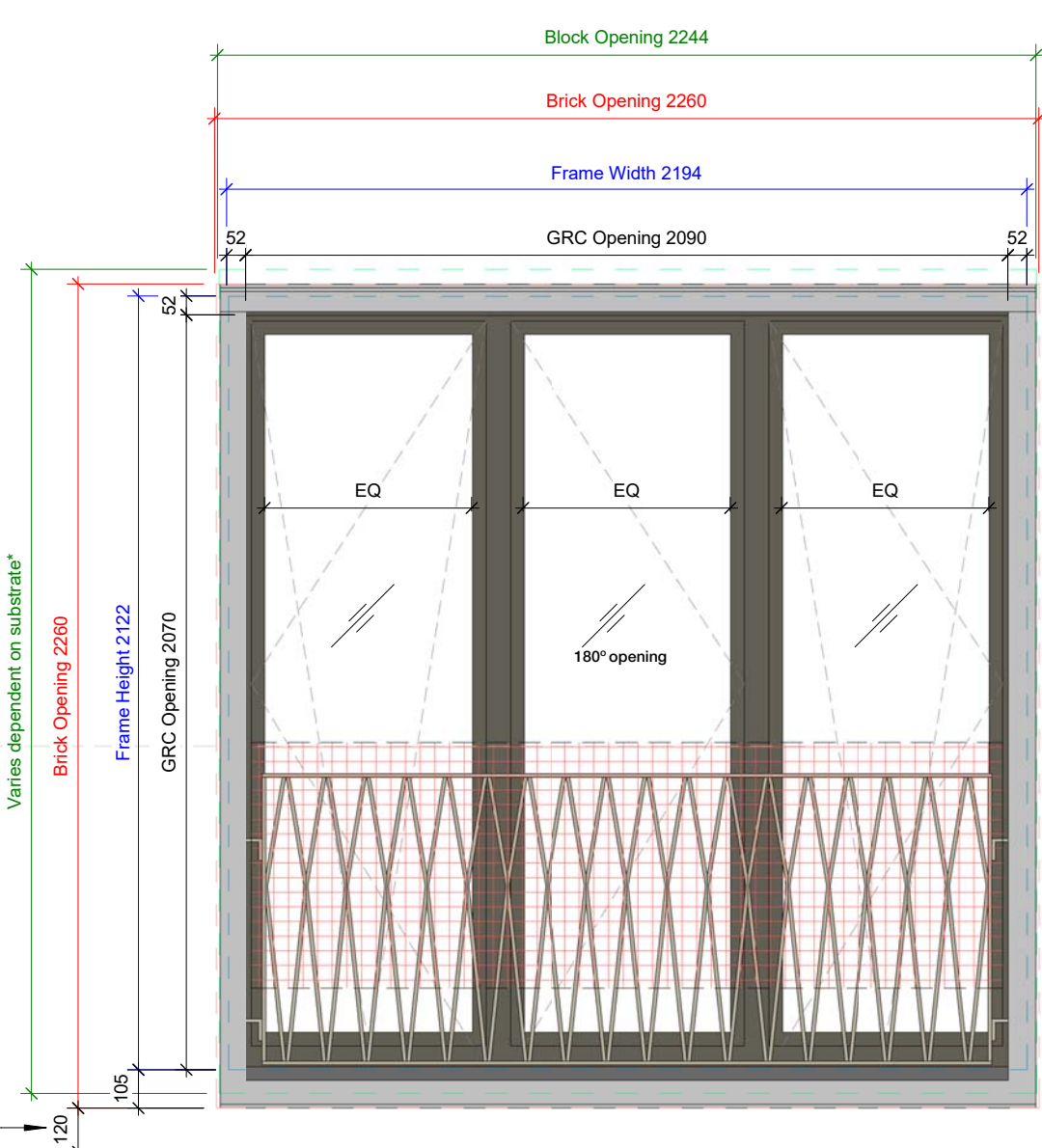
Balustrades shown indicatively - refer to AGV-HBA-JKL-ZZ-DR-A-340400 series for design intent



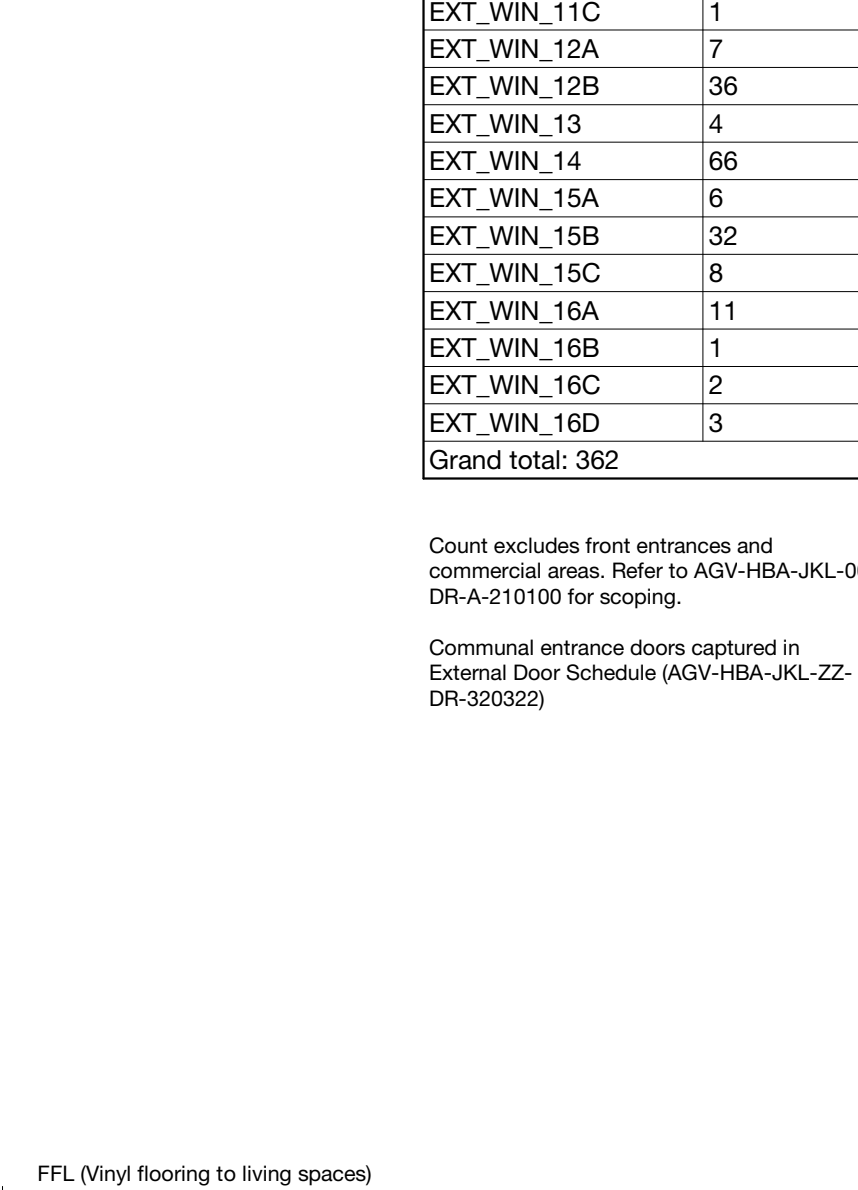
EXT_WIN_03A
Double solarium (L01 only)
Changed from 90mm to 70mm head profile
*S.E to confirm cill support requirements



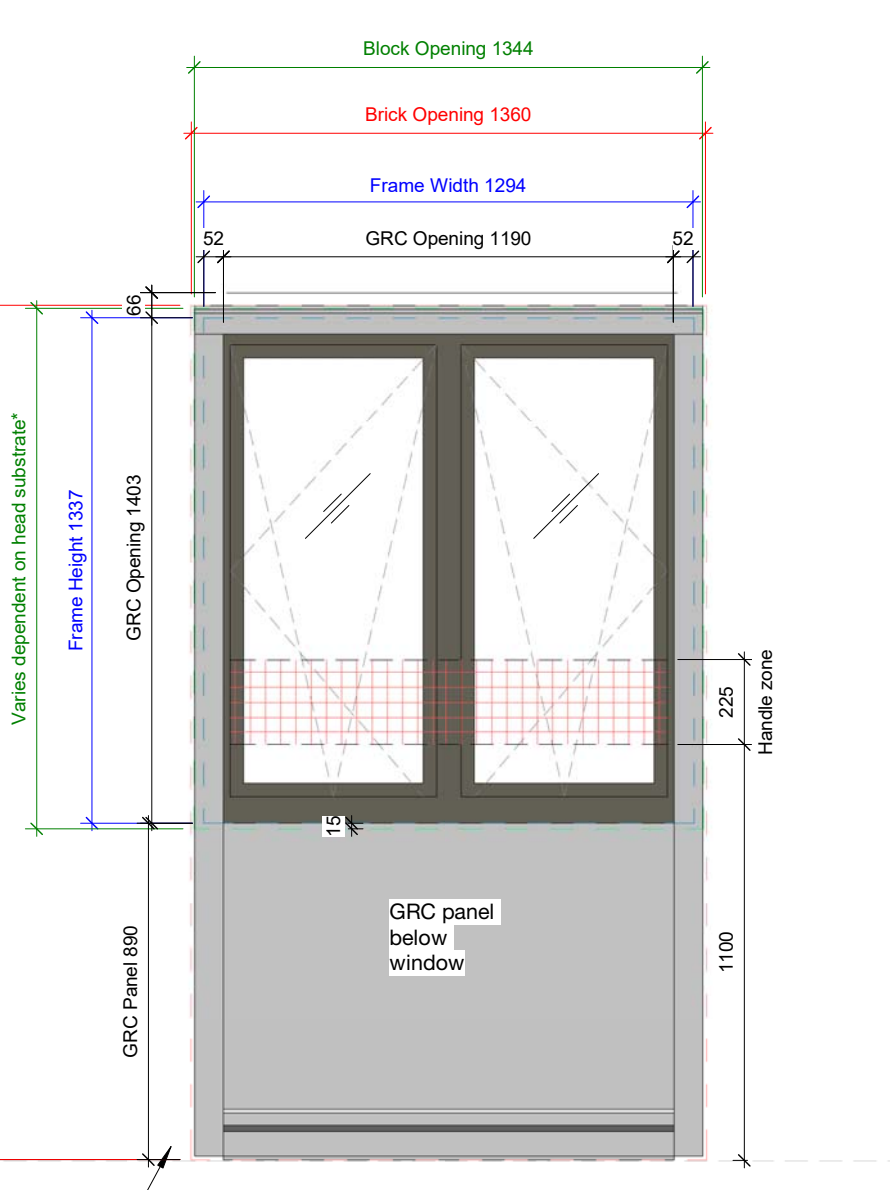
EXT_WIN_12A
(EXT-WIN-3B in ER)
Triple solarium
Central pane to open 180° - handing direction varies by instance, to be noted on itemised window schedule
Changed from 90mm to 70mm head and cill profiles. Refer to schedule for instances requiring deflection fixing into RC downstand
Height of balustrade to vary on L01, due to different cill height, to ensure guarding height is 1100mm
*S.E to confirm cill support requirements



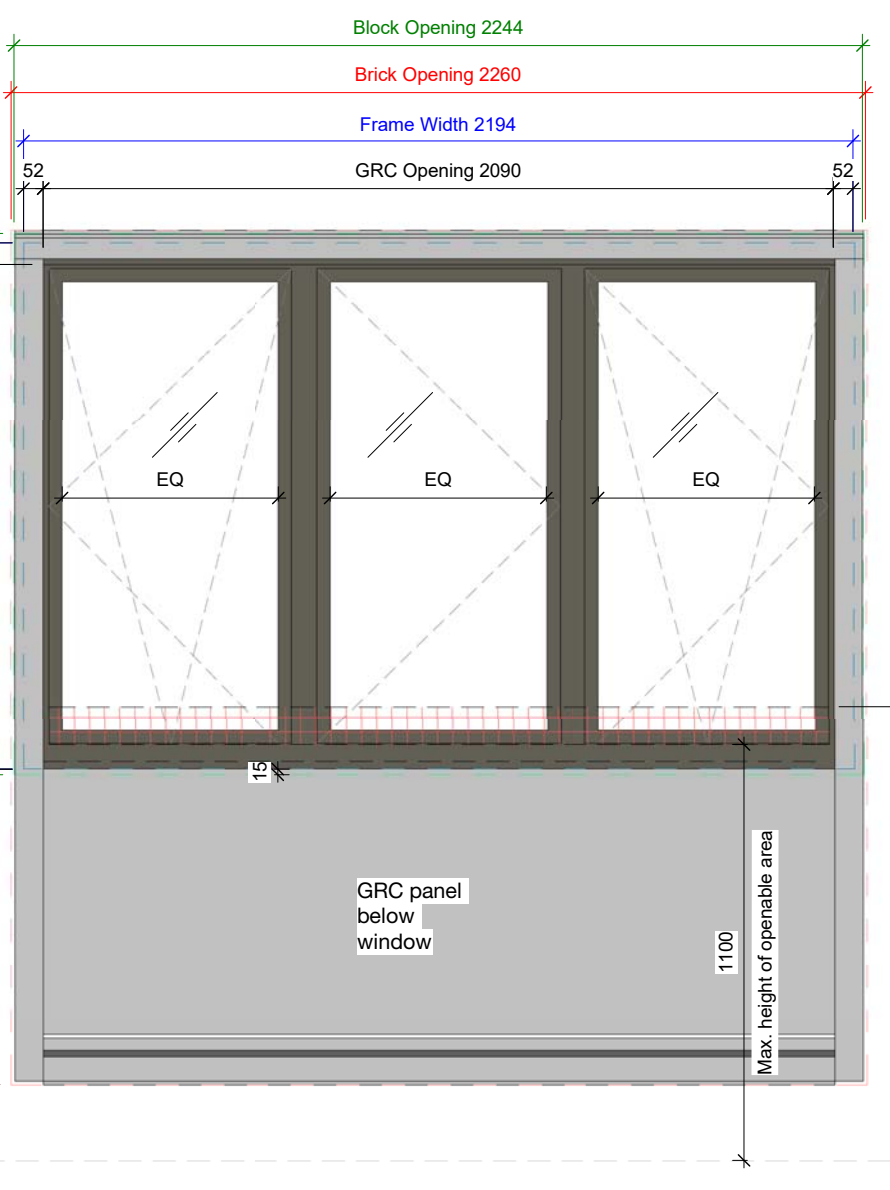
EXT_WIN_12B
(EXT-WIN-3C in ER)
Triple solarium
Central pane to open 180° - handing direction varies by instance, to be noted on itemised window schedule
Changed from 90mm to 70mm head and cill profiles. Refer to schedule for instances requiring deflection fixing into RC downstand
Height of balustrade to vary on L01, due to different cill height, to ensure guarding height is 1100mm
*S.E to confirm cill support requirements



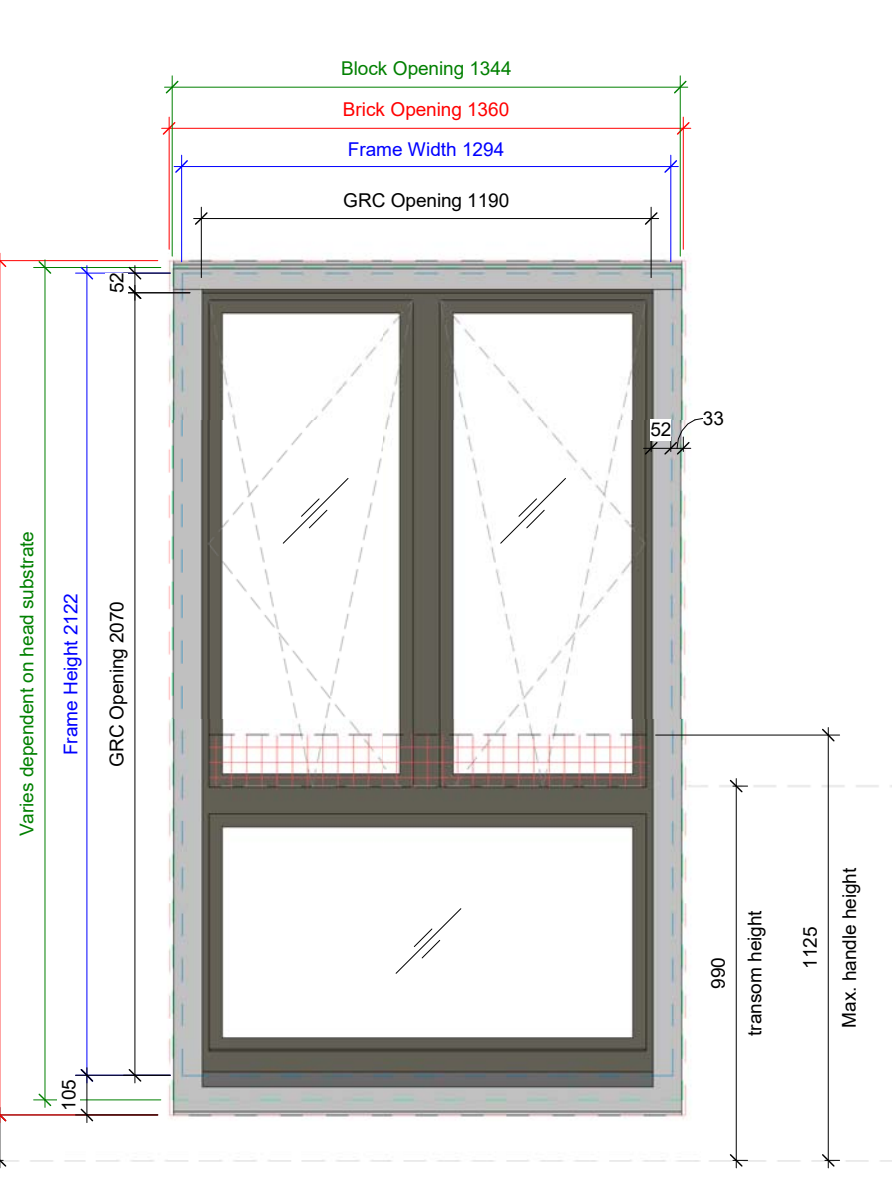
EXT_WIN_03A
Double solarium (L01 only)
Changed from 90mm to 70mm head profile
*S.E to confirm cill support requirements



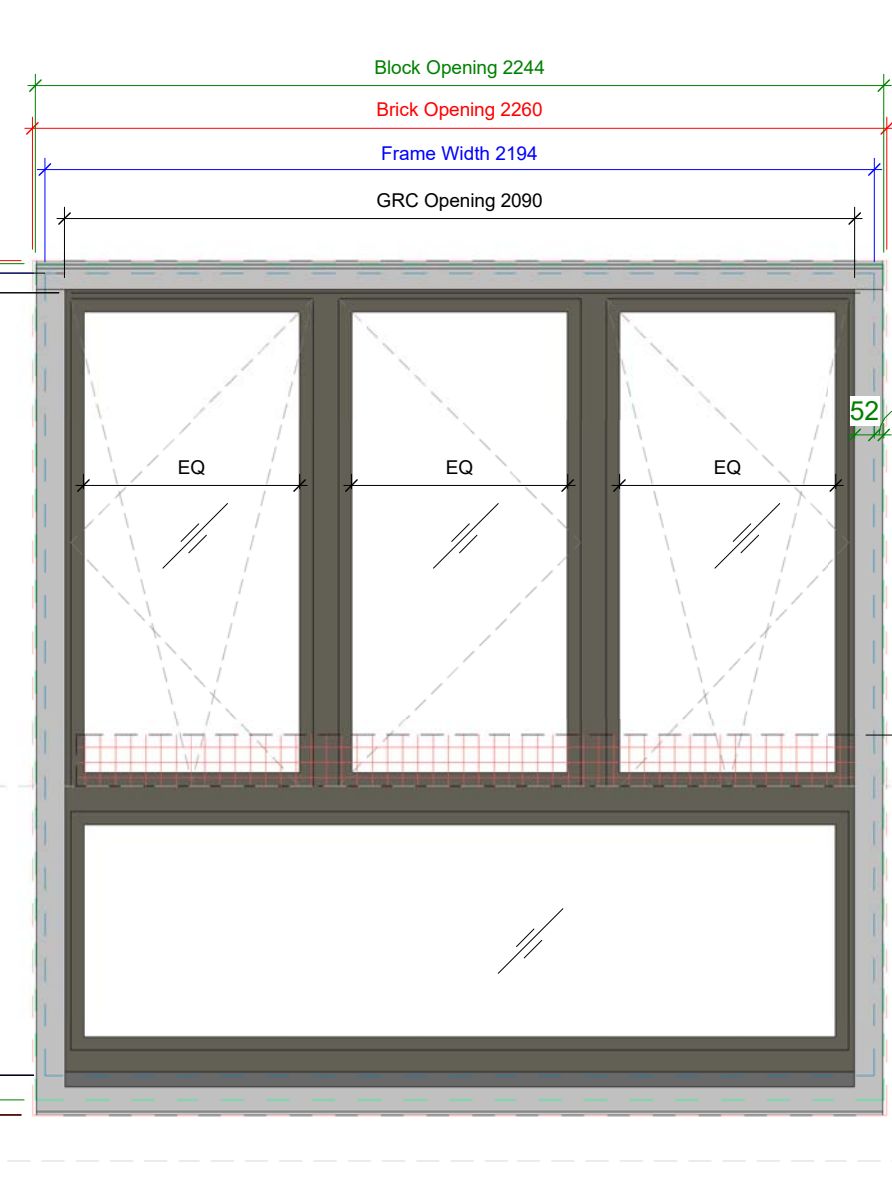
EXT_WIN_04A
Double window to kitchen/bathroom
3x instances with obscured glazing (GLP-113) to bathroom (L01/L03)
Refer to schedule for instances requiring deflection fixing into RC downstand
*S.E to confirm cill support requirements



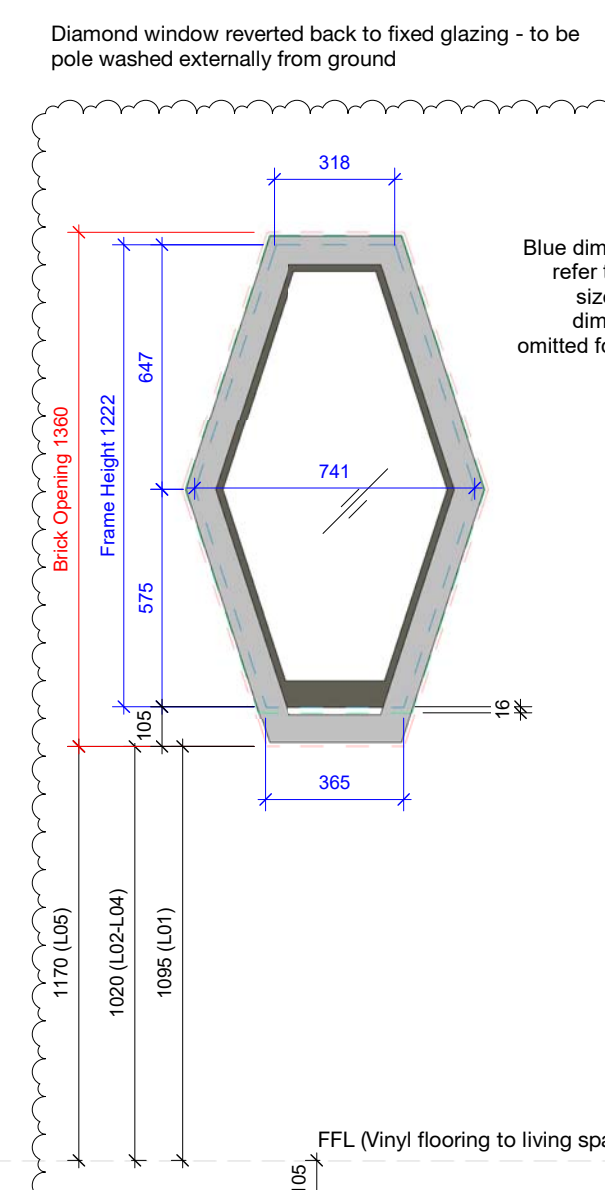
EXT_WIN_13
(EXT-WIN-4B in ER)
L00 Triple window
*S.E to confirm cill support requirements



EXT_WIN_05A
Double window
Changed from 90mm to 70mm cill profile. Refer to schedule for instances requiring deflection fixing into RC downstand
*S.E to confirm cill support requirements
Transom height increased in latest revision - guarding provision to be confirmed with Building Control and Principal Designer



EXT_WIN_14
(EXT-WIN-5B in ER)
Triple window
Changed from 90mm to 70mm cill profile
*S.E to confirm cill support requirements
Transom height increased in latest revision - guarding provision to be confirmed with Building Control and Principal Designer



EXT_WIN_06
Diamond window
Opening into RC inner leaf updated in HBA model for setting out by P&M.

Handle/controls zone. Zone reduced from Approved Document M to accommodate varying cill heights

159 St John Street
London EC1V 4JQ
mail@hawkinsbrown.com
hawkinsbrown.com

Hawkins\Brown

Project
**Agar Grove Phase 1c
Block JKL**

Drawing
Window Types 02

Scale @ A1
1 : 20

Date
Apr 2021

Drawn By
TC

Checked By
JW

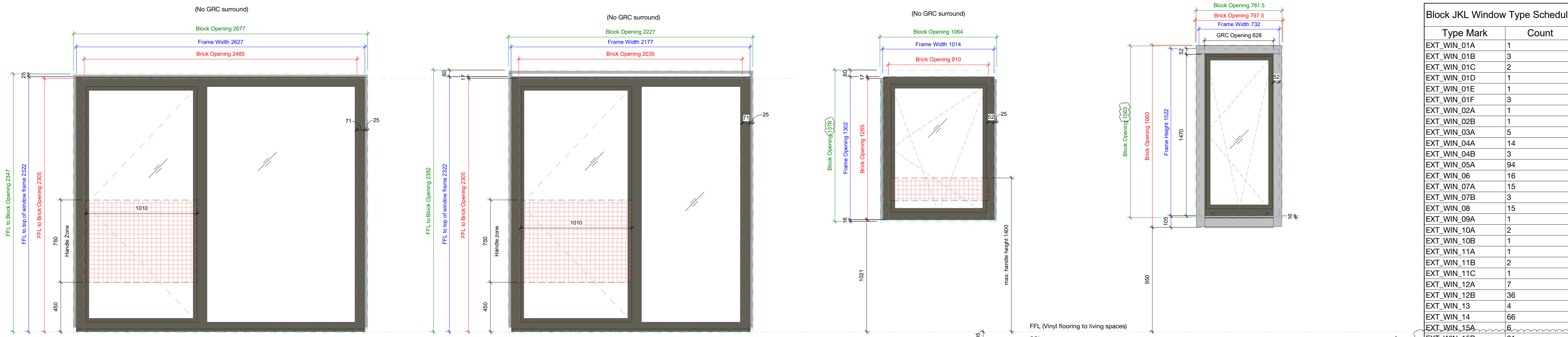
Job Number
1423-C

Status
S1

Purpose of Issue
Coordination

Drawing No.
AGV-HBA-JKL-ZZ-DR-A-310201

Rev
P7



Type Mark	Count
EXT_WIN_01A	1
EXT_WIN_01B	3
EXT_WIN_01C	2
EXT_WIN_01D	1
EXT_WIN_01E	1
EXT_WIN_01F	3
EXT_WIN_02A	1
EXT_WIN_02B	1
EXT_WIN_03A	5
EXT_WIN_04A	14
EXT_WIN_04B	3
EXT_WIN_05A	94
EXT_WIN_06	16
EXT_WIN_07A	15
EXT_WIN_07B	3
EXT_WIN_08	15
EXT_WIN_09A	1
EXT_WIN_10A	2
EXT_WIN_10B	1
EXT_WIN_11A	1
EXT_WIN_11B	2
EXT_WIN_11C	1
EXT_WIN_12A	7
EXT_WIN_12B	36
EXT_WIN_13	4
EXT_WIN_14	66
EXT_WIN_15A	6
EXT_WIN_15B	31
EXT_WIN_15C	8
EXT_WIN_16A	11
EXT_WIN_16B	1
EXT_WIN_16C	2
EXT_WIN_16D	3
Grand total:	361

Copyright Hawkins\Brown Architects
No implied licence exists. This drawing should not be used to calculate areas for the purposes of valuation. Do not scale this drawing. All dimensions to be checked on the site by the contractor and such dimensions to be their responsibility. All work must comply with relevant British Standards and Building Regulations requirements. Drawing errors and omissions to be reported to the architect. To be read in conjunction with Architect's specification and other consultant information.

Rev	Description	Date
P1	Issued for Coordination	12/04/21
P2	Amendments as indicated. EXT_WIN_12B count updated	22/04/21
P3	W-JKL-04-066+W-JKL-05-059 added. EXT_WIN_07B width reduced. EXT_WIN_06 height increased and counts updated	21/05/21
P4	Window Type 15C added and width of 10A and 16A adjusted	03/06/21
P5	EXT_WIN_06 and EXT_WIN_09A changed to inward opening	16/08/21
P6	Amendments as indicated on sheet	14/09/21
P7	1 instance of EXT_WIN_15B omitted to L05 staircase. Updates to 10A 15C. 16A width following change from smooth brickwork. Balustrade omitted from EXT_WIN_11C	22/04/22

All GRC dimensions and extent of cloaking of window frame to be confirmed following initial profile design by GRC subcontractor

To be read in conjunction with:
Window schedule: AGV-HBA-JKL-ZZ-SH-A-310001
Window details: AGV-HBA-JKL-ZZ-DR-A-210400 Series
Airtightness taping details: AGV-HBA-ZZ-DR-A-210900/901
Fire Strategy Report: AFF-20566-02-AgarGrovePhase1C_FSR_01

Window unit performance:
-Refer to AGV-HBA-JKL-ZZ-SH-A-310001 for U-Value, G-Value and Acoustic requirements
-VLT: 70%
-Barrier loading: BS 6180 Table 2 Class (ii)
-Impact resistance: Class 1 to BS EN 12600
-Security: PAS24:2016 to all L00 window/doors with Class P1A laminated glass to BS EN 350:2000
-Airtightness: Class 4 to BS EN 12207/1026

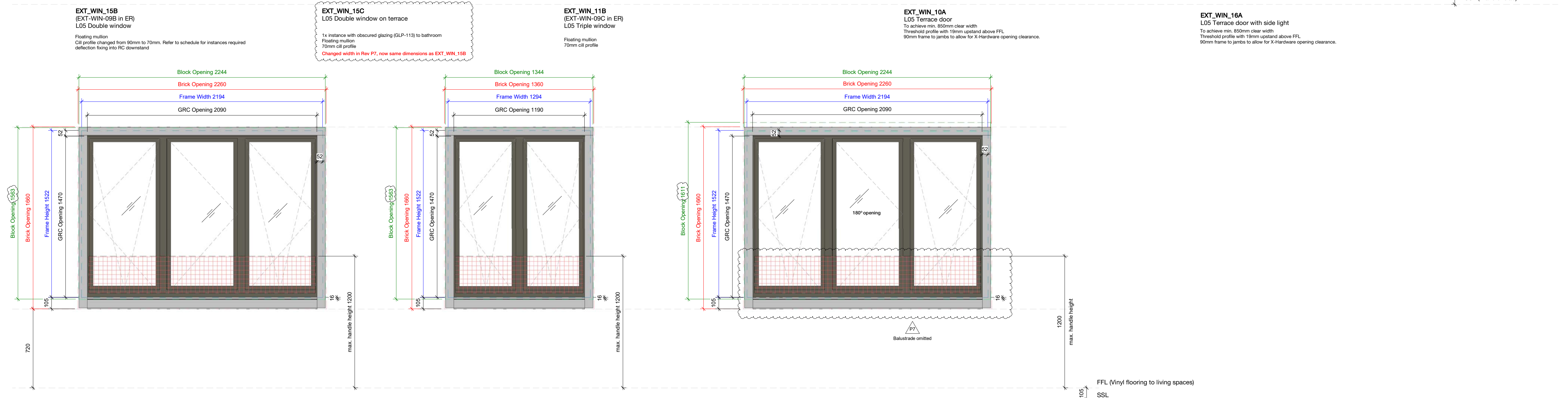
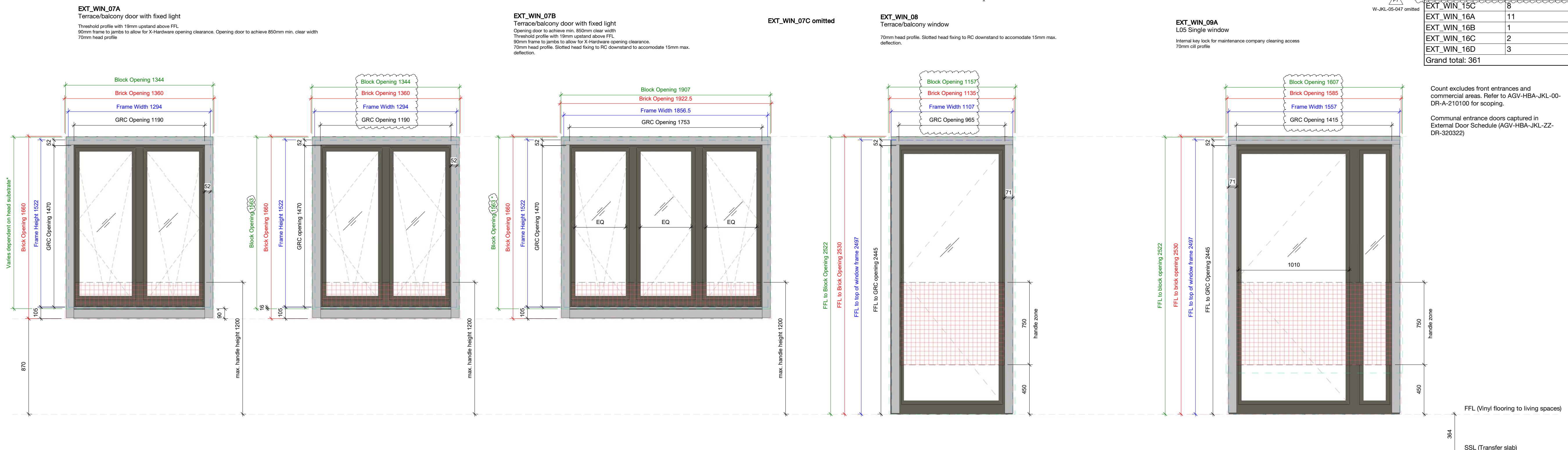
Window operation:
-Handing direction of all window assemblies to be confirmed
-Windows indicated as fire egress routes on AGV-HBA-JKL-ZZ-SH-A-310001 to be fitted with non-key locking hardware and should be capable of remaining open without being held
-Dashed opening direction lines drawn to UK convention i.e. arrow pointing towards hinge side
-Bespoke aftermarket cable restrictors to be fitted to L00 windows (apart from egress windows). 130mm cable length on top of sash to restrict tilt function, 100mm cable length to opening side to restrict turn function.

Glass selection:
-All pane specifications to be selected by fabricator to satisfy sizes of units and performance characteristics cited
-Refer to schedule for NBS specification of glazing units (L40 section)
-Coatings for solar control/Low-E to be selected to satisfy performance characteristics cited
-All glass to be safe breakage in accordance with the requirements of Approved Document K
-All toughened glass to be heat soak tested to mitigate the risks of NiS inclusions
-Toughened glass to not be used to outer panes above ground floor accordance with CWCT TN68 recommendations
-All glass to be selected to prevent the risk of thermal stress fracture
-All glass & frame selection to be evidenced for approval and to demonstrate Passivhaus compliance
-Obscured glazing where noted on window types/AGV-HBA-JKL-ZZ-SH-A-310001

Dimensions:
-Frame height dimensions assume Parent cill carrier piece not used due to combustibility
-Frame dimensions are to outer frame. 10mm packing zone to all sides assumed and accounted for within Block Opening dimensions.
-70mm outer frame profile assumed unless otherwise noted
-10mm tolerance between GRC profile and brickwork opening

Installation:
-All units to be installed in accordance with manufacturers recommendations
-All fixing design by installer

Handle/controls zone. Zone reduced from Approved Document M to accommodate varying cill heights
159 St John Street London EC1V 4QJ
mail@hawkinsbrown.com hawkinsbrown.com



Assumed base support requirements from S.E:
-Door thresholds= 6mm continuous stainless steel Z-bracket
-All other cills= 6mm continuous stainless steel flat plate



Project
Agar Grove Phase 1c
Block JKL

Drawing
Window Types 03

Scale @ A1
1 : 20
Date
Apr 2021

Drawn By
TC
Checked By
JW

Job Number
1423-C
Status
S1
Purpose of Issue
Coordination

Drawing No.
AGV-HBA-JKL-ZZ-DR-A-310202
Rev
P7