

General notes:  
All dimensions are approximate and subject to a full measured survey  
All drawings to be read in conjunction with Structural Engineers and Services  
Engineers drawings. Any discrepancies are to be highlighted and brought to  
the attention of the Architects.

Health and safety notes:

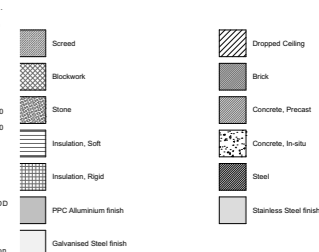
Manual handling  
Avoid as far as reasonably practicable hazardous handling operations,  
including heavy lifting loads and working over shoulder height.

Confined space / Working at height  
Safe access to be provided when working at height.  
Be aware of restrictions placed on movement when working with temporary  
access equipment.

Temporary propping  
Care to be taken when fixing vertical elements to allow for secure fixing when  
fitting.

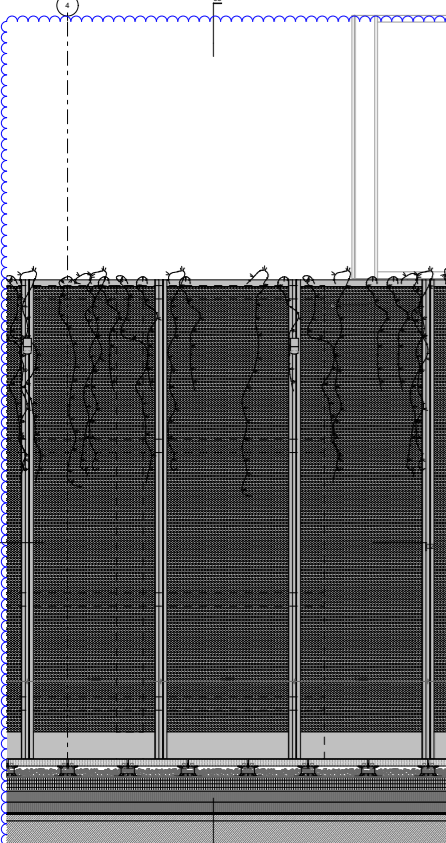
Personal protective equipment  
Appropriate equipment to be worn at all times while on site.

Material hatches:

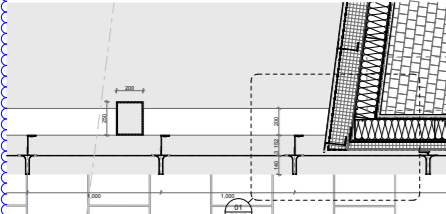


Notes:

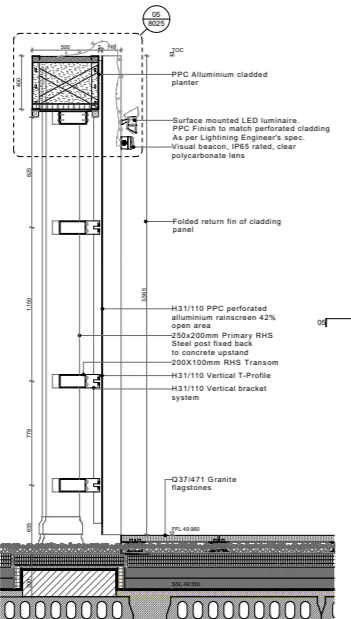
REV ID	DATE	CHANGE ID	REASON FOR ISSUE	NAME
103	04/12/20		Stage 4 Drawing Revision	GP
100	21/08/21	004A	Dimensions, sizes/weights, general review	GP



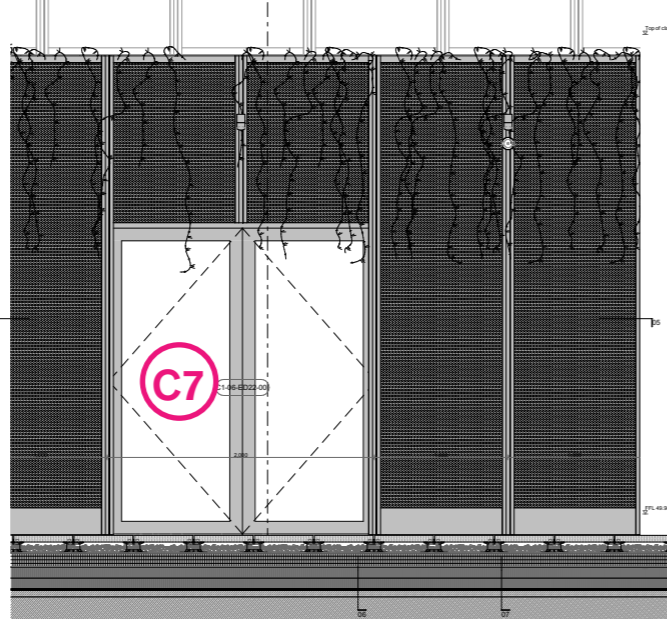
01 - Elevation - Pratt Street terrace



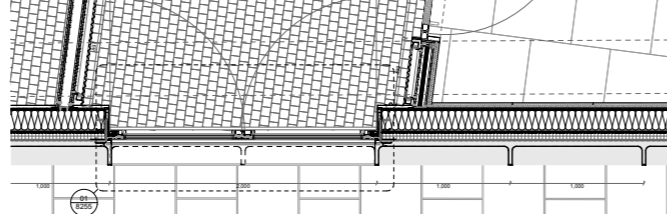
02 - Plan - Louvre screen segment



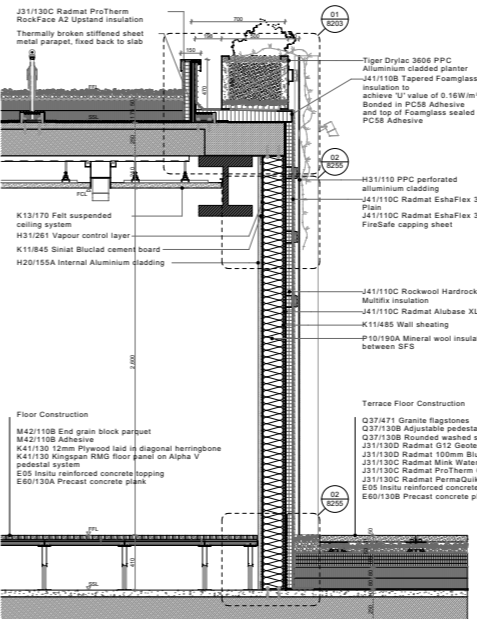
03 - Section - External Wall Type 12



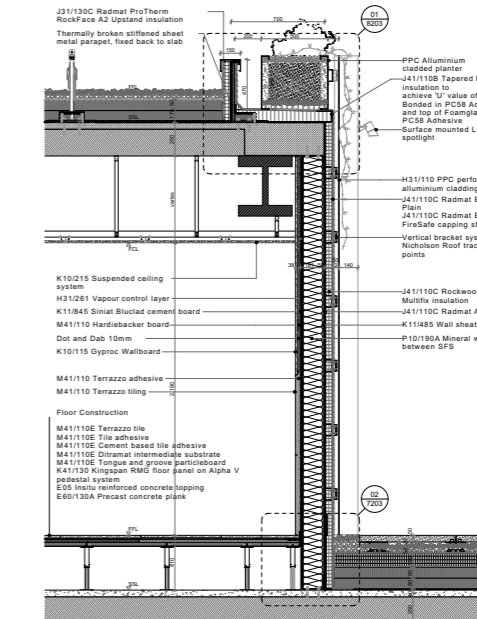
04 - Elevation - Pratt Street terrace



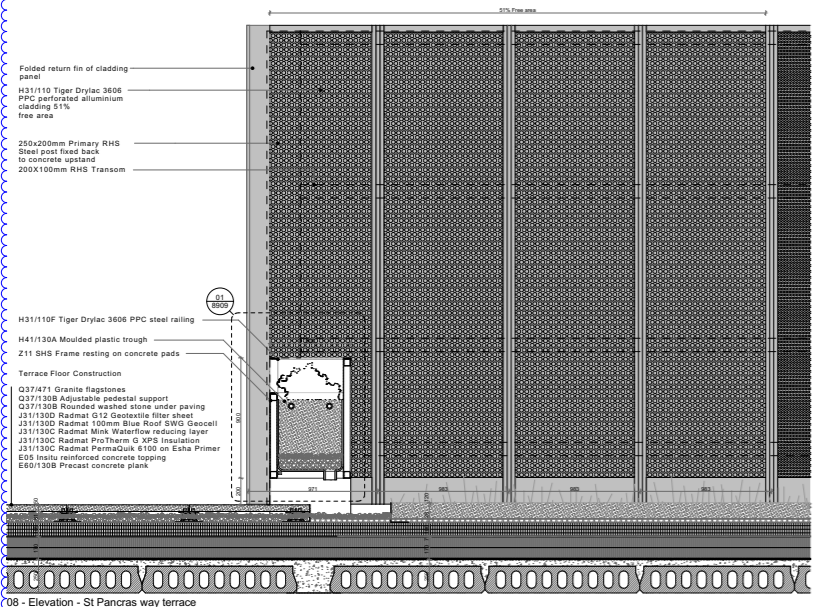
05 - Plan - Pratt Street terrace



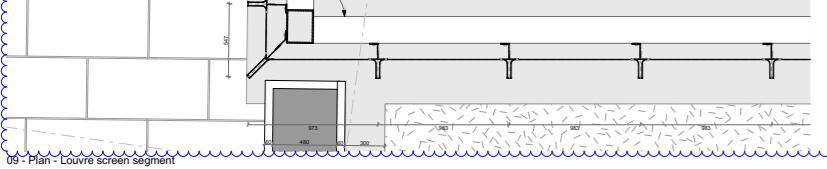
06 - Section - External Wall Type 11



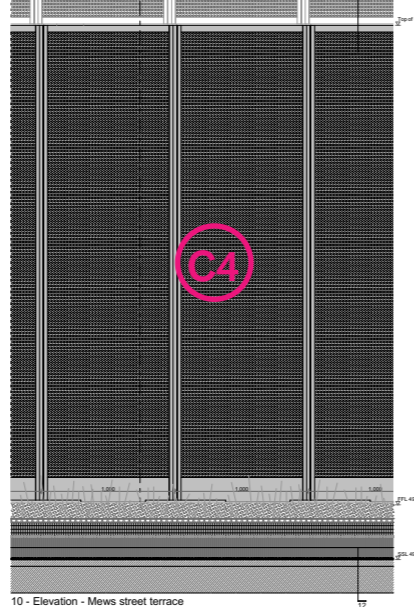
07 - Section - External Wall Type 10



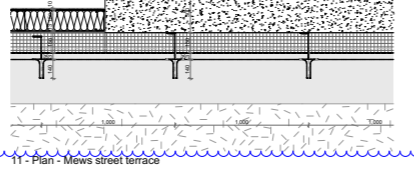
08 - Elevation - St Pancras way terrace



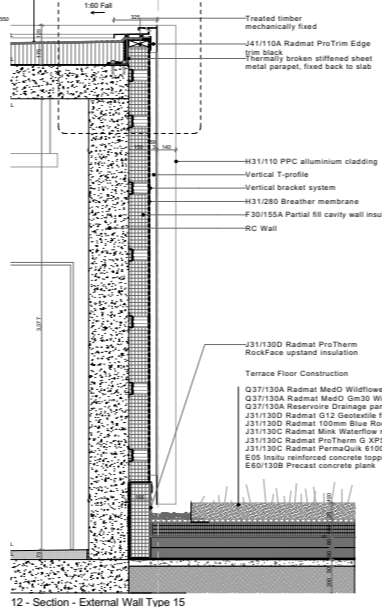
09 - Plan - Louvre screen segment



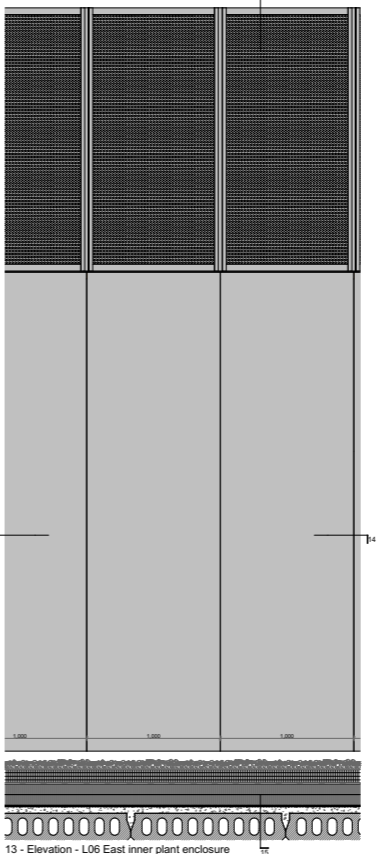
10 - Elevation - Mews street terrace



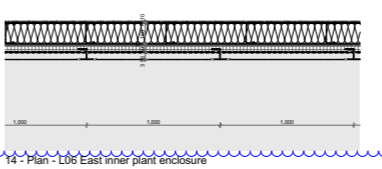
11 - Plan - Mews street terrace



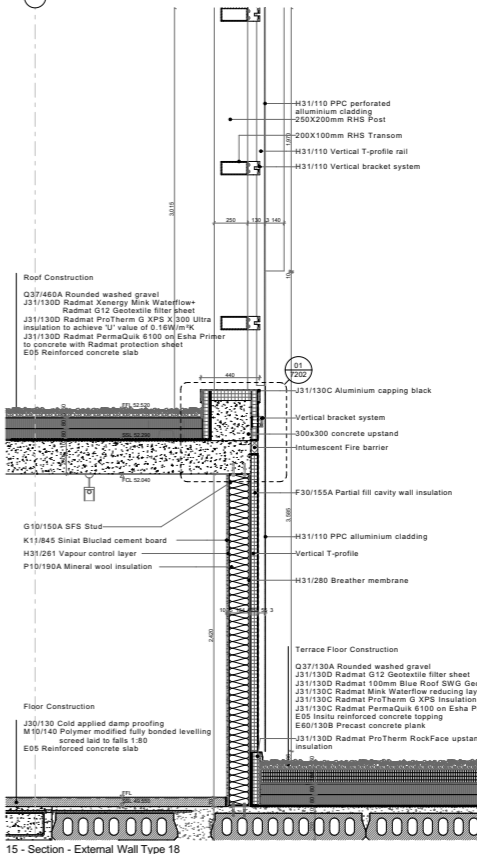
12 - Section - External Wall Type 15



13 - Elevation - L06 East inner plant enclosure

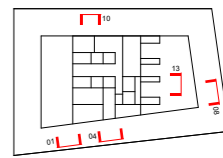


14 - Plan - L06 East inner plant enclosure



15 - Section - External Wall Type 18

Caruso St John Architects



477 St Pancras Commercial Centre

External Wall - Elevation - Plant - Types 10-12, 15, 18 CONSTRUCTION

477	CSJ	C1	ZZ	DE	A	7036	D2	C00
-----	-----	----	----	----	---	------	----	-----

1:20 | 1180 x 841 | 02/08/19 | 21/09/21 | GP | JH

STAGE 05 | ±0.00 = 0.00 AOD

Client:  
W RE  
8 Redwood Mews, London, W1D 3DH

Project manager:  
Baldwin & Co.  
No 1, Cline Street, London, SE1 9EG

Architect:  
Caruso St John Architects LLP  
1 Cusack Street, London E2 9AG, UK +44 (0)20 7813 3161. london@carusostjohn.com

Planning consultant:  
Geat Ewe  
72 Welbeck Street, London, W1D 3AY

Structural engineer:  
AKT II  
White Collar Factory 1 Old Street Yard London EC1Y 9AF

Building services:  
Noranj Clayton Tring  
1 Angel Court, London EC2R 7NL United Kingdom

Quantity surveyor:  
Expone  
Montevideo 5-23 Old Street London EC1Y 9HQ

Approved by Caruso St John Architects Ltd on behalf of Caruso St John Architects LLP



## 2.6 Material palette

- C1 Red Sandstone
- C2 White acid etched precast concrete - smooth
- C3 White acid etched precast concrete - rough
- C4 Tiger drylac PPC - Marrone 3606
- C5 Stainless steel - brushed 240grit
- C6 Glass - Lower
- C7 Glass - Upper



*C1 - Stone cladding*  
Material: Wuestenzell Red Sandstone  
Supplier: Hofmann Stone  
Finish: Aquapower



*C2 - Concrete nodes*  
Material: White precast concrete  
Supplier: Decomo  
Finish: Acid Etched



*C3 - Concrete columns*  
Material: White precast concrete (Reckli formwork)  
Supplier: Decomo  
Finish: Acid Etched



*C4 - External metalwork and window frames*  
Material: Drylac Marrone 3606 powder coating  
Supplier: Tiger Coatings (fabricated by Stuctal/Rinaldi)



*C5 - Recepton Window frames*  
Material: Stainless steel  
Supplier: Rimex (fabricated by Stuctal/Rinaldi)  
Finish: Brushed - 240 grit



*C6 - Glass Lower*  
Material: Saint-Gobain glass,  
Pane 1; Diamant (6 mm)  
PVB Standard (2 X 0,38 mm)  
Diamant (6 mm)  
Cool-Lite Skn 076  
Cavity; Argon (90%) / Air (10%) / 22 mm  
Pane 2; Diamant (5 mm)  
PVB Standard (2 X 0,38 mm)  
Diamant (5 mm)



*C7 - Glass Upper*  
Material: Saint-Gobain glass,  
Pane 1; Planiclear (6 mm)  
PVB Standard (2 X 0,38 mm)  
Planiclear (6 mm)  
Cool-Lite Skn 176  
Cavity; Argon (90%) / Air (10%) / 20 mm  
Pane 2; Planiclear (5 mm)  
PVB Standard (2 X 0,38 mm)  
Planiclear (5 mm)



### 3.0 Residential buildings

#### 3.1 Residential and retail ground floor

