

General notes:
All dimensions are approximate and subject to a full measured survey
All drawings to be read in conjunction with Structural Engineers and Services Engineers drawings. Any discrepancies are to be highlighted and brought to the attention of the Architects.

Health and safety notes:
Manual handling
Avoid as far as reasonably practicable hazardous handling operations, including heavy lifting loads and working over shoulder height.
Confined space / Working at height
Safe access to be provided when working at height.
Be aware of restrictions placed on movement when working with temporary access equipment.
Temporary propping
Care to be taken when fixing vertical elements to allow for secure fixing when fitting.
Personal protective equipment
Appropriate equipment to be worn at all times while on site.

Material hatches:

Notes:

REV ID	DATE	CHANGE ID	REASON FOR ISSUE	NAME
T04	11/11/20		Single 4	LDV
C00	21/06/21	C00-A	Dimensions, weights, general review, SI and PC tagging	LDV
C01	13/01/22	C01-A	Facade setting and coordination to accommodate supporting steel	TW

Caruso St John Architects

477 St Pancras Commercial Centre

External wall - Elevation - Office Ground - Type 9

477	CSJ	C1	ZZ	DE	A	7027	D2	C01
1:20	1189 x 841	02/08/19	13/01/22	TW	JH			

STAGE 05 ±0.00 = 0.00 AOD

Client: WRE
8 Redwood Mews, London, W1D 3DH

Project manager: Blackburn & Co.
No 1, Clerk Street, London, SE1 9EG

Architect: Caruso St John Architects LLP
1 Coale Street, London E2 8AG, UK, +44 (0)20 7813 3161, london@carusostjohn.com

Planning consultant: Gerald Ewe
72 Welbeck Street, London, W1D 3AY

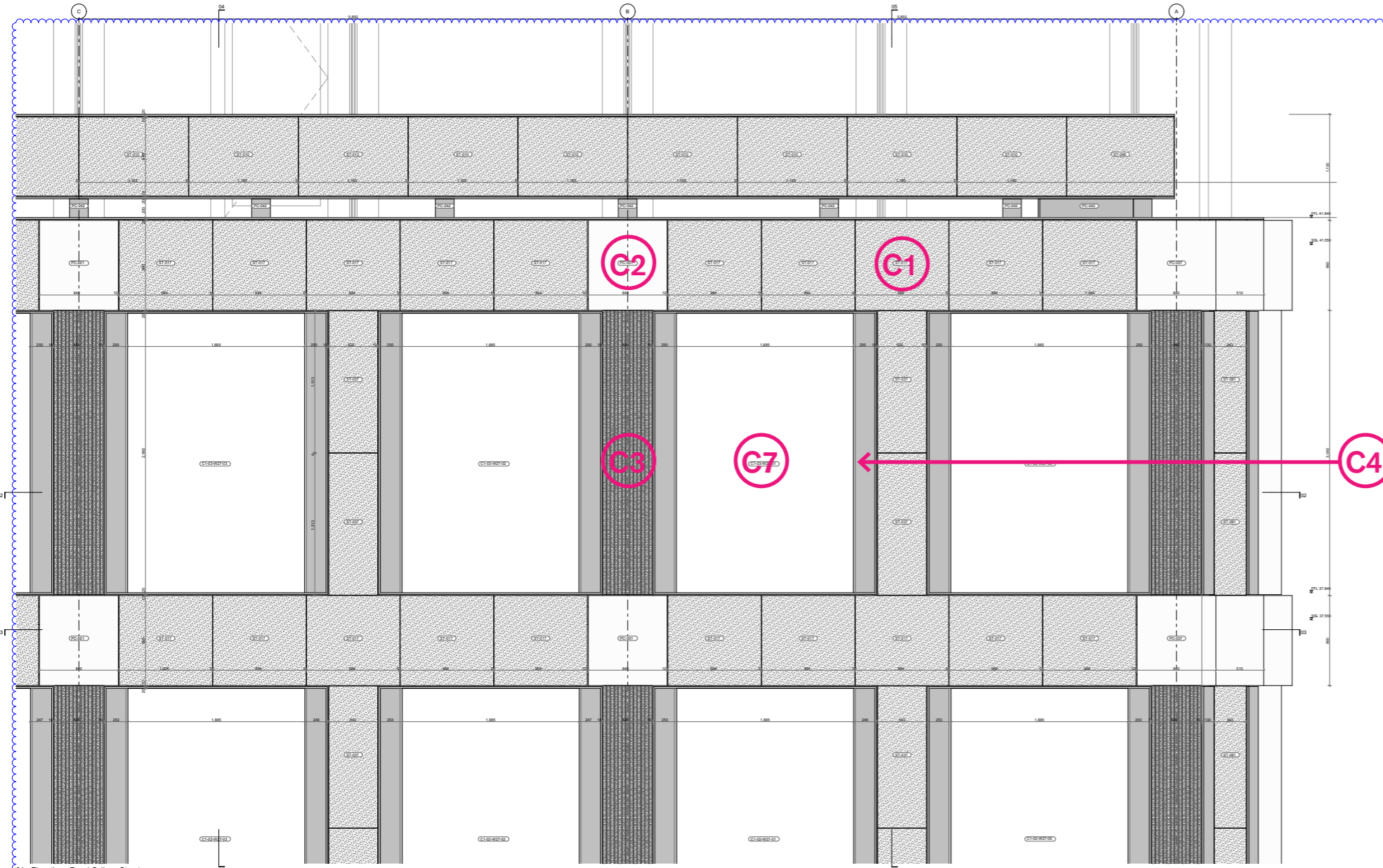
Structural engineer: AKT 2
White Collar Factory 1 Old Street Yard London EC1Y 8AF

Building services: Norman Chery Young
7 Angel Court, London EC2R 7HL United Kingdom

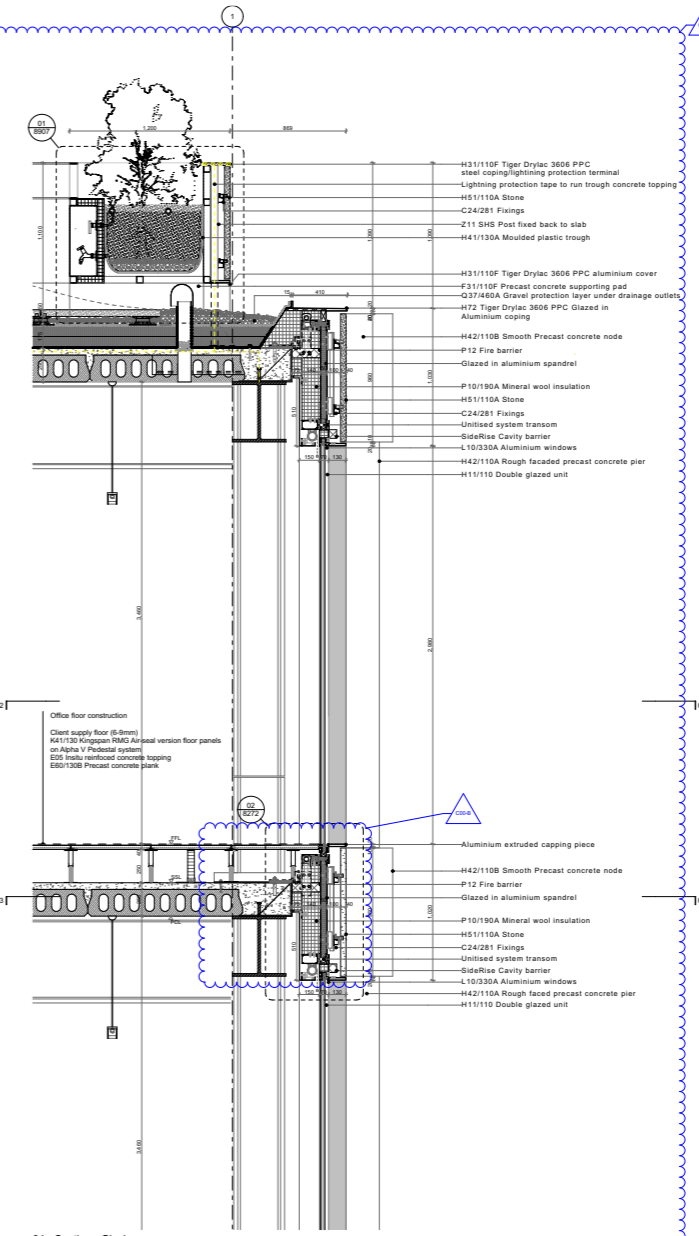
Quantity surveyor: Ergone
Moorlands 5-23 Old Street London EC1Y 9HL

2.3 Office typical upper

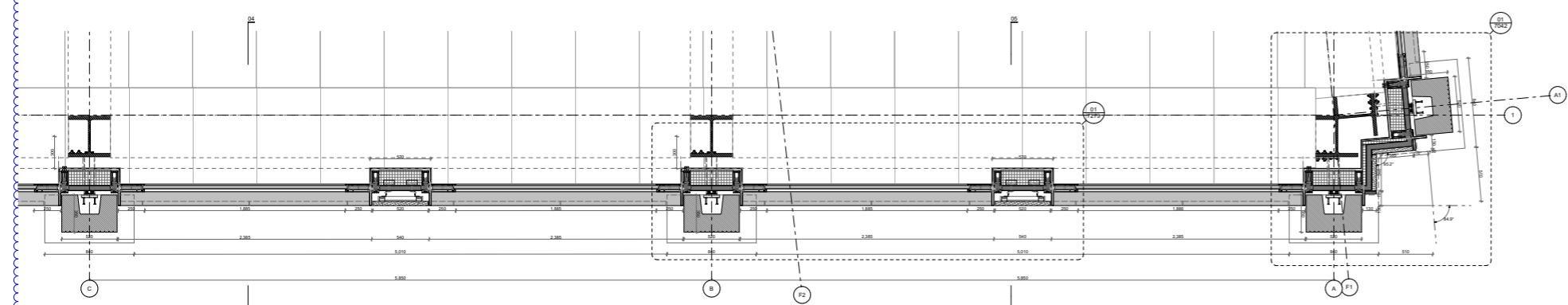




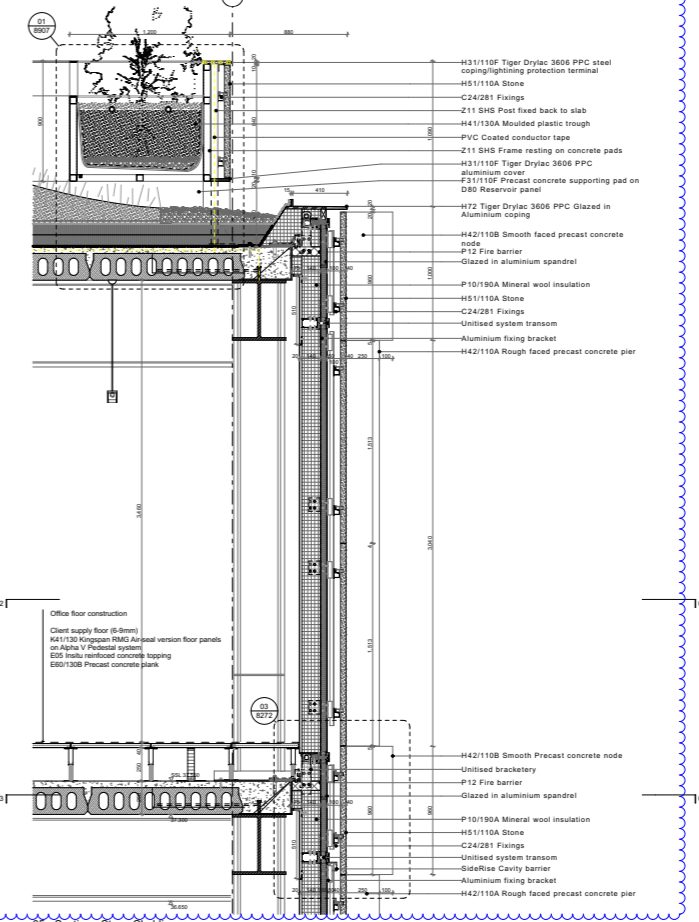
01 - Elevation - Royal College Street



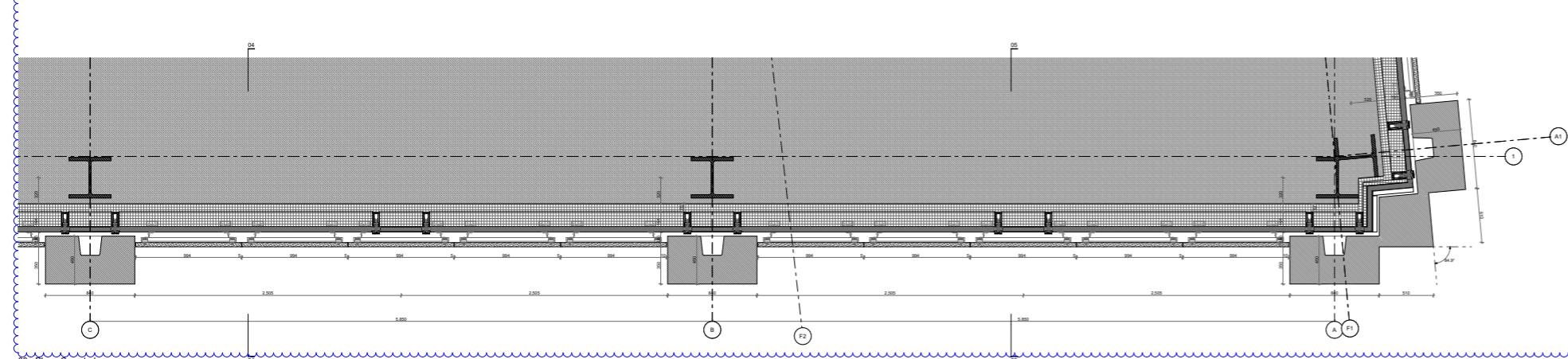
04 - Section - Glazing



02 - Plan - Glazing



05 - Section - Stone Cladding



03 - Plan - Spandrel

General notes:
 All dimensions are approximate and subject to a full measured survey
 All drawings to be read in conjunction with Structural Engineers and Services Engineers drawings. Any discrepancies are to be highlighted and brought to the attention of the Architects.

Health and safety notes:
 Manual handling
 Avoid as far as reasonably practicable hazardous handling operations, including heavy lifting loads and working over shoulder height.

Confined space / Working at height
 Safe access to be provided when working at height.
 Be aware of restrictions placed on movement when working with temporary access equipment.

Temporary propping
 Care to be taken when fixing vertical elements to allow for secure fixing when fitting.

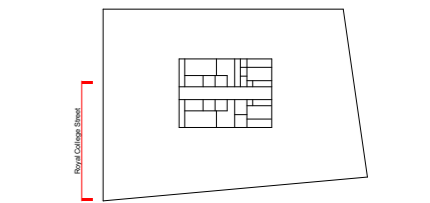
Personal protective equipment
 Appropriate equipment to be worn at all times while on site.

Material hatches:

Notes:

REV ID	DATE	CHANGE ID	REASON FOR ISSUE	NAME
104	11/11/20		Stage 4	LDV
C00	21/09/21	C00-A	Dimensions, in-sights, general review, SI and PC tagging	GP
		C00-B	External beading, Fire barrier, RAF Floor edge	

Caruso St John Architects



477 St Pancras Commercial Centre

External Wall - Elevation - Office - Type 1 CONSTRUCTION

477	CSJ	C1	ZZ	DE	A	7015	D2	C00
-----	-----	----	----	----	---	------	----	-----

1:20	1189 x 841	02/08/19	21/09/21	GP	JH
------	------------	----------	----------	----	----

STAGE 05 ±0.00 = 0.00 AOD

Client:
 WRE
 8 Redwood Mees, London, W1D 3DH

Project manager:
 Blackburn & Co.
 No 1, Clerk Street, London, SE1 9EG

Architect:
 Caruso St John Architects LLP
 1 Cavell Street, London E2 8AG, UK, +44 (0)20 7813 3161, london@carusostjohn.com

Planning consultant:
 Gerald Eve
 72 Welbeck Street, London, W1D 5AY

Structural engineer:
 AKT II
 White Collar Factory 1 Old Street Yard London EC1Y 8AF

Building services:
 Norman Chelmsley Young
 1 Angel Court, London EC2R 7HL United Kingdom

Quantity surveyor:
 Ergone
 Moorlands 5-23 Old Street London EC1Y 9HE

2.4 Office terrace

