

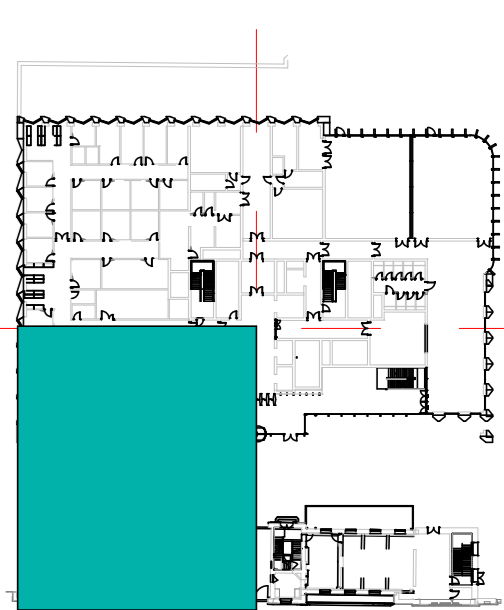
CDM Regulations:  
In addition to any information included in this drawing or the model from which it is derived, refer also to the project CDM Risk Register for information on residual risks.

- General Notes:
- The drawing does not necessarily show all the information needed to interpret the design intent or the construction details.
  - The drawing contains information from more than one source and must be read in conjunction with all relevant specifications.
  - Any apparent drafting errors and differences between other drawings and specifications shall be brought to our attention.

- Project Notes:
- FOR FULL VENTILATION ANCILLARIES PROVISIONS (VCDs ETC) REFER TO VENTILATION SCHEMATICS
  - FINAL LOCATION AND SPECIFICATIONS OF FIRE DAMPERS ARE CURRENTLY IN ABEYANCE AWAITING CONFIRMATION OF FIRE WALLS/COMPARTMENTS FROM THE FIRE CONSULTANT.
  - ALL FCU SPIGOTS ARE 250e.

## LEGEND

	DIRTY EXTRACT
	EXHAUST
	EXTRACT
	FLUE
	FUME EXTRACT
	INTAKE
	IVC EXTRACT
	IVC SUPPLY
	SMOKE EXTRACT
	SUPPLY
	EMERGENCY
	SPECIALIST
	FIRE RATED DUCTWORK - EXTRACT
	FIRE RATED DUCTWORK - SUPPLY
	TURNKEY INSTALLER TO PROVIDE



Key Plan

P08	STAGE 4A TENDER ISSUE	SD	TS	MC	20/02
P08	STAGE 4A TENDER ISSUE	MAM	TS	MC	07/02/23
P07	STAGE 4A TENDER ISSUE	MAM	TS	MC	20/02
P06	STAGE 4A TENDER ISSUE	PS	TS	MC	20/02/23
P05	ISSUE FOR REVIEW AND COMMENT / APPROVAL	MAM	TS	MC	04/10/19
P04	ISSUE FOR REVIEW AND COMMENT / APPROVAL	PS	TS	MC	08/08/19
P03	ISSUE FOR REVIEW AND COMMENT / APPROVAL	PS	TS	MC	08/08/19
P02	FINAL STAGE 3 ISSUE	PS	TS	MC	20/01/19
P01	STAGE 3 ISSUE	PS	TS	MC	15/01/19

REVISIONS:

**HOARE LEA**

ARCHITECT:  
Hawkins Brown  
159 St John Street  
London  
EC1V 4QJ

CLIENT:  
University College London

PROJECT TITLE:  
UCL - IoN/DRI

DRAWING TITLE:  
Ground Floor ISV  
Ventilation Layout Zone 3

## Tender Issue

PERSON RESPONSIBLE FOR:		
Design:	Review:	Authorising Issue:
PS	TS	MC
Project No:	Date:	Scale @ A0:
26/01200	24/01/2020	1: 50 @ A0
DRAWING NUMBER:		Working Revision:
BEMP-HLEA-P1-00A-DR-M-570-1003		S3/S4 PO9