

Siena Floodlights

LED Floodlights



Data Sheet

Product Information

The Siena high powered LED floodlights are available in three wattages 100W, 150W, or 200W. All three outputs are available with either 3000K or 4000K colour LED output. With a high colour rendering and come complete with a 3 year warranty.



Product Features

- 3 year warranty
- High efficiency
- 3000K or 4000K LED Options
- Non-Dimmable
- IP65
- IK08
- CRI: Ra>82
- Instant on
- Range of sizes and wattages
- Integral driver
- Lighting designers can download photometric data from our website
- L70 – 36,000hrs

Product Specification

Product Code	Product Description	Wattage (W)	CCT (K)	Lumens (lm)
KSR5288	100W 3000K LED Floodlight	100	3000	8595
KSR5289	100W 4000K LED Floodlight	100	4000	8400
KSR5290	150W 3000K LED Floodlight	150	3000	12380
KSR5291	150W 4000K LED Floodlight	150	4000	13250
KSR5292	200W 3000K LED Floodlight	200	3000	16520
KSR5293	200W 4000K LED Floodlight	200	4000	16385

Nominal voltage	220-240V
Operating frequency	50-60Hz
Ambient temperature range	-20°C~+40°C
Start time	< 0.5 sec
Protection Class	I
CRI	Ra>82
IP rating	IP65

Construction

Body: Cast Aluminium
Diffuser: Glass

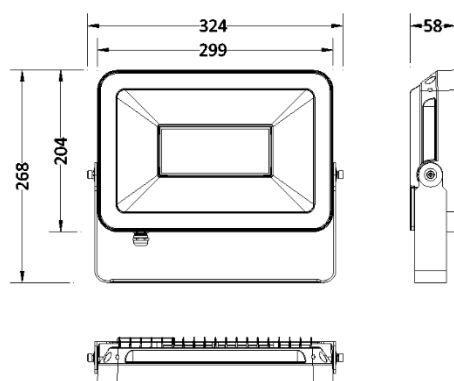
Standards

EN60598-2-5:2015 Luminaires – Part 2-5: Floodlights

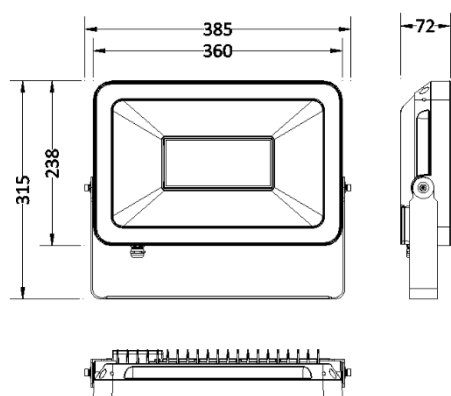
In Conformity with

LVD Low voltage directive 2014/35/EU
EMC Electromagnetic compatibility directive 2014/30/EU
ERP Energy related products directive 2019/2020/EU
RoHS Restriction of hazardous substances 2015/863/EU

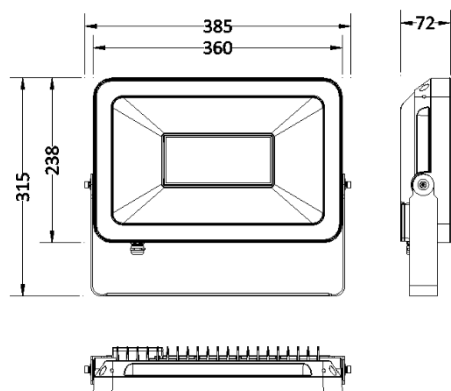
Product Dimensions



KSR5288-9



KSR5290-91



KSR5292-93

KSR Lighting is constantly developing and improving its products. For this reason, all product descriptions in this data sheet are intended as a general guide, and KSR may change specifications from time to time in the interest of product development, without prior notification or public announcement. All descriptions in this data sheet present only general particulars of the goods to which they refer and shall not form part of any contract. Data in this guide has been obtained in controlled experimental conditions. However, KSR Lighting cannot accept any liability arising from the reliance on such data to the extent permitted.