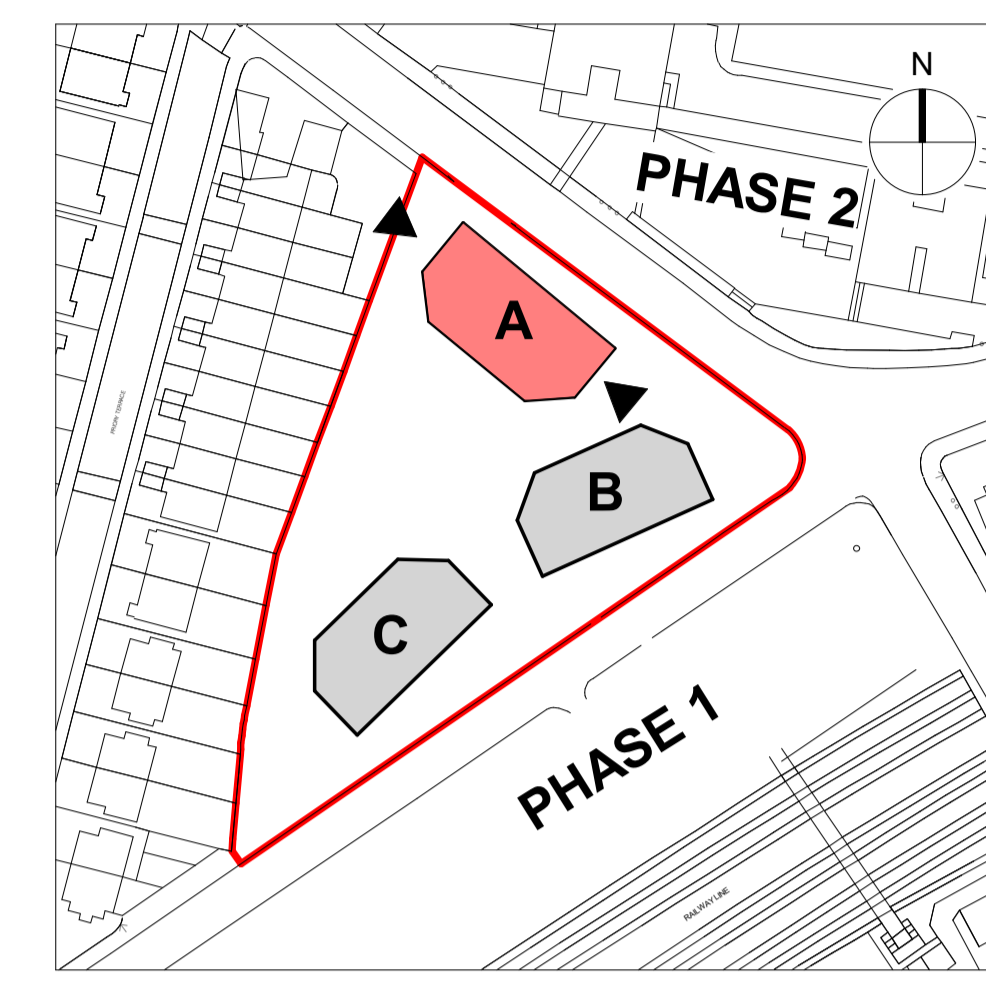


**GENERAL NOTES:**  
 This drawing is © 2019 Pollard Thomas Edwards LLP (PTE).  
 Use figured dimensions only. **DO NOT SCALE.**  
 All dimensions are in millimetres unless noted otherwise.  
 This drawing must be read in conjunction with all other relevant drawings and specifications from the Architect and other consultants.  
 If in doubt, ask.

**SETTING OUT NOTES:**  
 All setting out to be confirmed on site prior to construction - any discrepancy must be immediately reported to the Architect.  
 All setting out to face of structure or to grid.  
 All partitions set out to studwork or structure.  
 For setting out and specification of M&E services refer to M&E Consultants documents.  
 For setting out and specification of structure refer to Structural Engineer's documents.



KEY PLAN

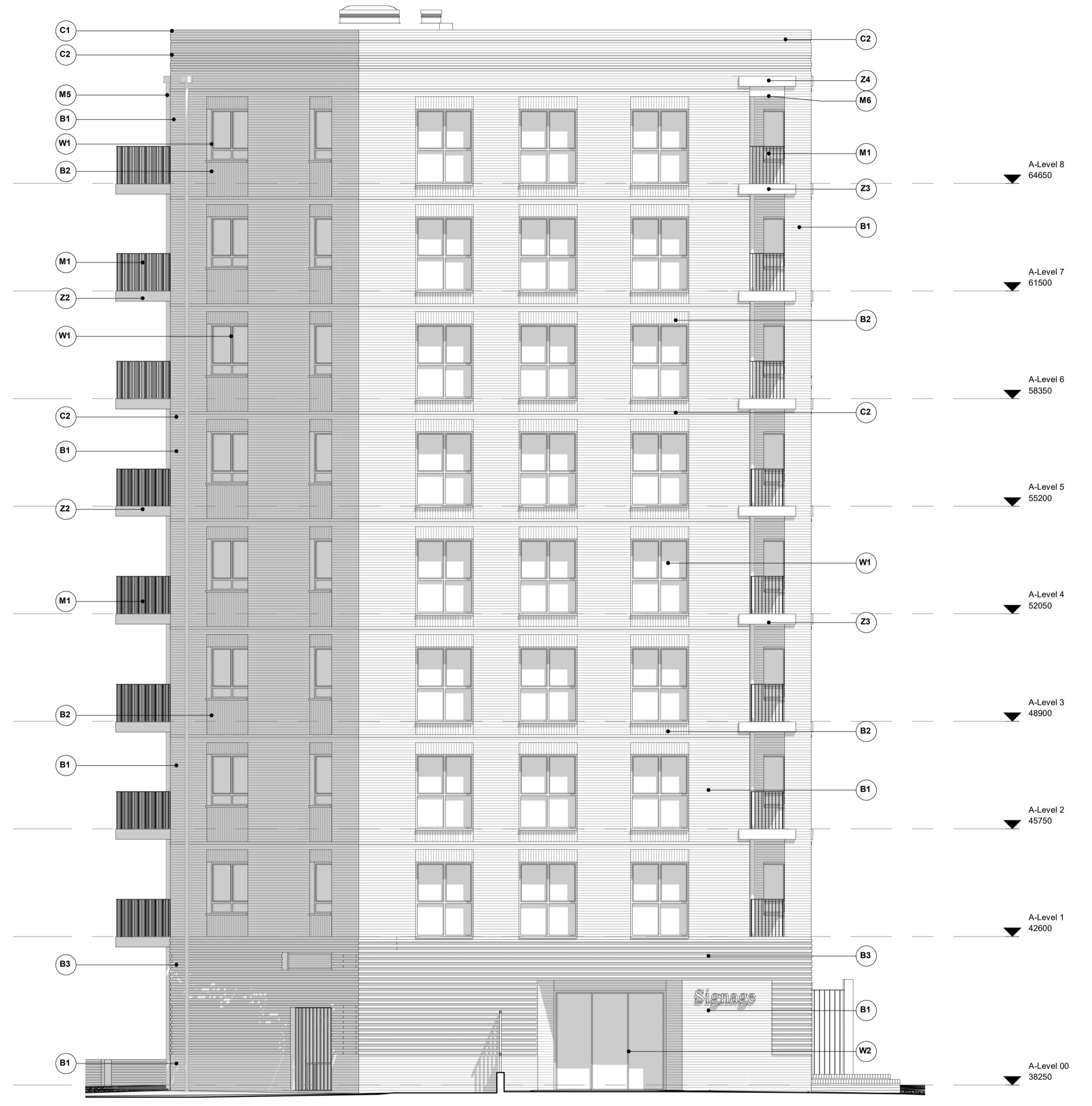


**MATERIALS KEY**

- B1 Pale pink brickwork with flush, colour matched light mortar- stretcher bond
- B2 Pale pink brickwork with flush, colour matched light mortar- vertical stretcher bond
- B3 Pale pink brickwork with flush, colour matched light mortar- corduroy (every other brick)
- Z1 Celebratory entrance lined in green masonry to complement brickwork
- Z2 PPC pink metal oxide bolt-on balconies
- Z3 Pink pigmented precast balcony deck. 50mm projection and ca. 327.5 mm horizontal extension
- Z4 Pink pigmented precast banding with 327.5 mm horizontal extension.
- M1 PPC pink metal oxide balustrade to inset / projecting balconies, made up of vertical metal flats
- M2 300mm high PPC pink metal oxide balustrade on recessed 800mm brick plinth (applicable to inset balconies at ground level)
- M3 Substation, plant and refuse PPC metal oxide louvred metalwork. Colour to complement surroundings
- M4 Imperforate acoustic screen enclosure in pale pink to match brickwork
- M5 Circular profile aluminium RWPs with PPC finish to be in with brickwork
- M6 Aluminium soffit with PPC pink metal oxide finish (applicable only to upper storeys)
- M7 Cycle store entrance doors: metal railings made up of vertical flats. PPC finish in pink colour to match metalwork.
- W1 Timber composite / aluminium window with deep reveal. Window frame colour in white iron oxide effect. Cill in PPC pink metal oxide
- W2 Shop frontage curtain wall with deep reveal. Framing in pale pink to match brickwork
- C1 Aluminium coping - colour to match metalwork across façade
- C2 20mm projecting / recessed brick detail



1 Block A - North Side Elevation  
 Scale: 1:100

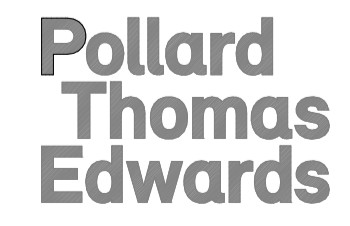


2 Block A - South Side Elevation  
 Scale: 1:100

rev	date	description	drawn	checked
A	24.06.22	Issued for Planning Submission	DC	DC
	27.04.22	Issued for Planning Submission	SK	HJ

**PLANNING**

Diespeker Wharf  
 38 Graham Street  
 London N1 8JX  
 020 7336 7777  
 forename.surname@pte.co.uk  
 @ptearchitects  
 www.pollardthomasedwards.co.uk



project	job number	drawn	scale	date created
Abbey Area Phase 3	19-049	SK	As indicated@A1	Apr'22
drawing title	drawing number	revision	submittal	
Proposed Block A Side Elevations	ARR- PTE- VA-ZZ-DR-A-10352		A	